

Project: Garfield County, CO  
 Site: BJU B26 496 Pad  
 Well: BJU B26 FED 24D-26 496  
 Wellbore: Wellbore #1  
 Design: Design #1  
 Latitude: 39.677119  
 Longitude: -108.137732  
 Ground Level: 8211.0  
 RKB @ 8241.0usft (30')

# PROJECT DETAILS: Garfield County, CO

Geodetic System: Universal Transverse Mercator (US Survey Feet)  
 Datum: NAD 1927 - Western US  
 Ellipsoid: Clarke 1866  
 Zone: Zone 12N (114 W to 108 W)  
 System Datum: Mean Sea Level

## REFERENCE INFORMATION

Vertical (TVD) Reference: RKB @ 8241.0usft (30')  
 Section (VS) Reference: Slot - BJU B26 FED 24D-26 496(0.0N, 0.0E)  
 Measured Depth Reference: RKB @ 8241.0usft (30')  
 Calculation Method: Minimum Curvature

## SECTION DETAILS

MD	Inc	Azi	TVD	+N/-S	+E/-W	Dleg	TFace	VSect	Annotation
0.0	0.00	0.00	0.0	0.0	0.0	0.00	0.00	0.0	
375.0	0.00	0.00	375.0	0.0	0.0	0.00	0.00	0.0	Build 3°/100'
1188.0	24.39	149.32	1163.6	-146.6	87.0	3.00	149.32	170.3	EOB @ 24.39° INC / 149.32° AZM
7961.1	24.39	149.32	7332.4	-2552.0	1513.9	0.00	0.00	2965.8	Drop 3°/100'
8774.1	0.00	0.00	8121.0	-2698.6	1600.8	3.00	180.00	3136.1	EOD @ Vertical / Build 1.5° / 100'
8875.8	1.53	250.00	8222.7	-2699.0	1599.6	1.50	250.00	3135.9	EOB @ 1.53° INC / 250.00° AZM
12579.4	1.53	250.00	11925.0	-2732.8	1506.9	0.00	0.00	3120.7	TD @ 12579.4' MD / 11925.0' TVD

## FORMATION TOP DETAILS

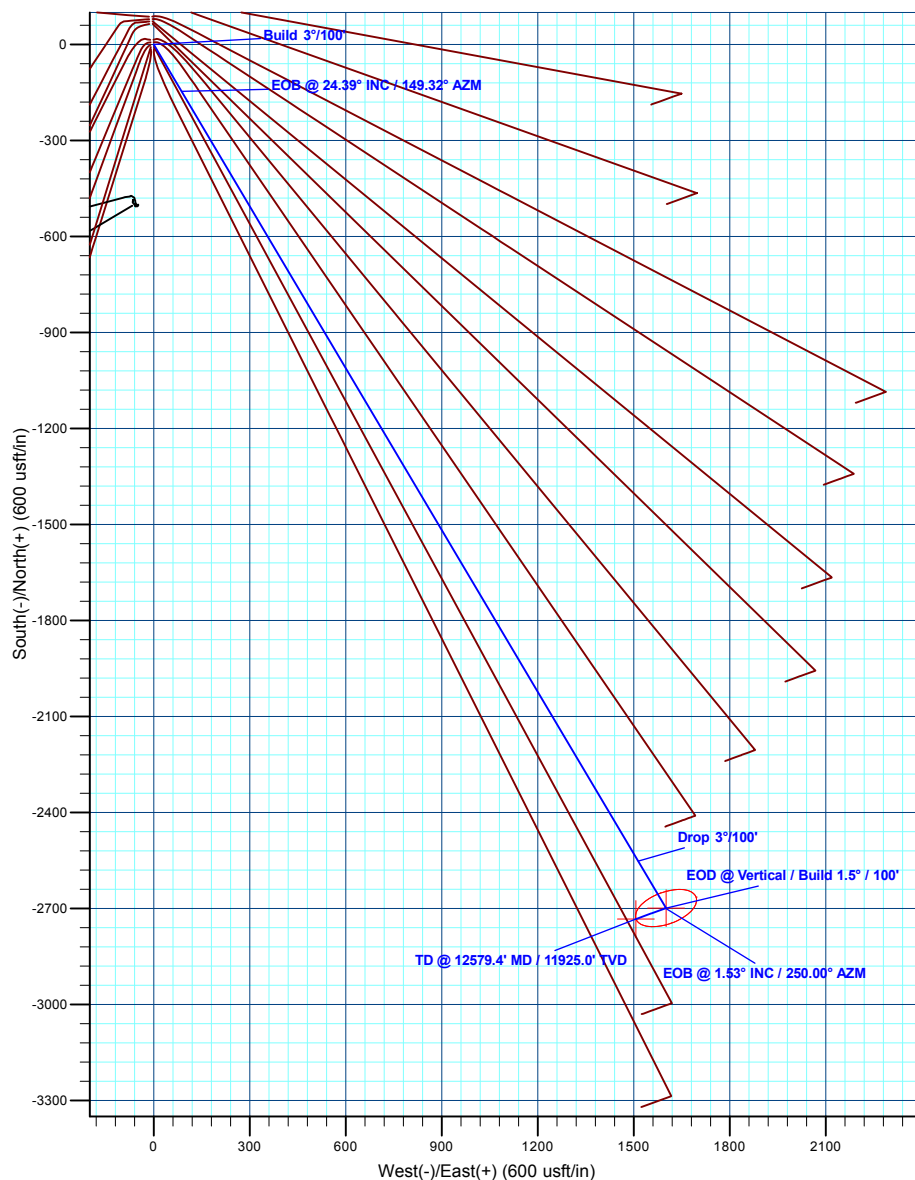
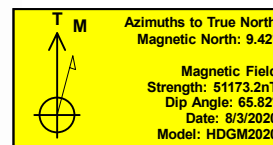
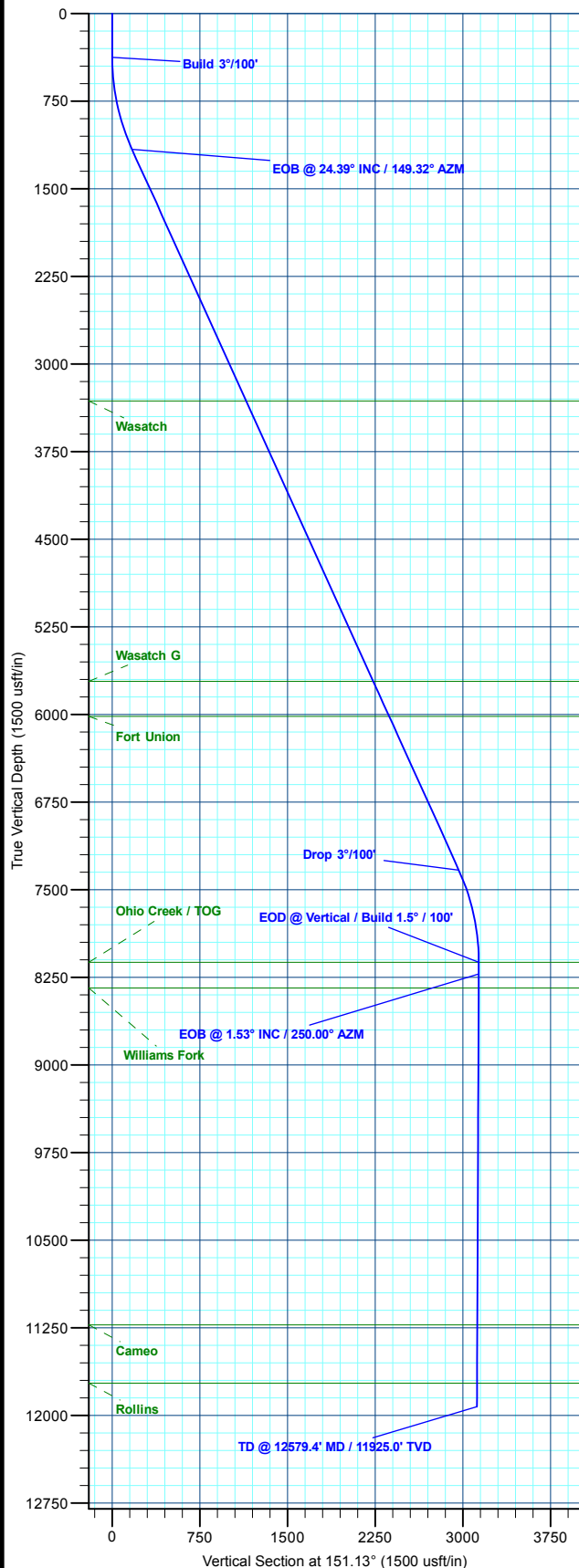
TVDPath	MDPath	Formation
3317.0	3552.3	Wasatch
5717.0	6187.5	Wasatch G
6017.0	6516.9	Fort Union
8121.0	8774.1	Ohio Creek / TOG
8342.0	8995.1	Williams Fork
11225.0	11879.1	Cameo
11725.0	12379.3	Rollins

## DESIGN TARGET DETAILS

Name	TVD	+N/-S	+E/-W	Northing	Easting	Latitude	Longitude
24D-26 - OHCR	8121.0	-2698.6	1600.8	14418679.99	2447529.83	39.669713	-108.132048
24D-26 - PBHL	11925.0	-2732.8	1506.9	14418642.80	2447437.00	39.669619	-108.132381

## WELL DETAILS: BJU B26 FED 24D-26 496

+N/-S	+E/-W	Ground Level : 8211.0	Northing	Easting	Latitude	Longitude
0.0	0.0		14421326.10	2445843.70	39.677119	-108.137732



Plan: Design #1 (BJU B26 FED 24D-26 496/Wellbore #1)

Created By: Will Jircik

Date: 10:55, August 06 2020



## **Caerus Oil & Gas**

**Garfield County, CO**

**BJU B26 496 Pad**

**BJU B26 FED 24D-26 496 - Slot BJU B26 FED 24D-26 496**

**Wellbore #1**

**Plan: Design #1**

## **QES Well Planning Report**

**06 August, 2020**



<b>Database:</b>	EDM 5000.1 Single User Db	<b>Local Co-ordinate Reference:</b>	Well BJU B26 FED 24D-26 496 - Slot BJU B26 FED 24D-26 496
<b>Company:</b>	Caerus Oil & Gas	<b>TVD Reference:</b>	RKB @ 8241.0usft (30')
<b>Project:</b>	Garfield County, CO	<b>MD Reference:</b>	RKB @ 8241.0usft (30')
<b>Site:</b>	BJU B26 496 Pad	<b>North Reference:</b>	True
<b>Well:</b>	BJU B26 FED 24D-26 496	<b>Survey Calculation Method:</b>	Minimum Curvature
<b>Wellbore:</b>	Wellbore #1		
<b>Design:</b>	Design #1		

<b>Project</b>	Garfield County, CO		
<b>Map System:</b>	Universal Transverse Mercator (US Survey Fee	<b>System Datum:</b>	Mean Sea Level
<b>Geo Datum:</b>	NAD 1927 - Western US		
<b>Map Zone:</b>	Zone 12N (114 W to 108 W)		

Site		BJU B26 496 Pad				
Site Position:		Northing:	14,421,469.70 usft	Latitude:	39.677515	
From:	Map	Easting:	2,445,821.30 usft	Longitude:	-108.137796	
Position Uncertainty:		0.0 usft	Slot Radius:	13-3/16 "	Grid Convergence:	1.83 °

Well	BJU B26 FED 24D-26 496 - Slot BJU B26 FED 24D-26 496					
Well Position	+N/-S	-144.2 usft	Northing:	14,421,326.10 usft	Latitude:	39.677119
	+E/-W	17.8 usft	Easting:	2,445,843.70 usft	Longitude:	-108.137732
Position Uncertainty		0.0 usft	Wellhead Elevation:		Ground Level:	8,211.0 usft

<b>Wellbore</b>	Wellbore #1				
<b>Magnetics</b>	<b>Model Name</b>	<b>Sample Date</b>	<b>Declination (°)</b>	<b>Dip Angle (°)</b>	<b>Field Strength (nT)</b>
	HDGM2020	8/3/2020	9.42	65.82	51,173.20000000

<b>Design</b>	Design #1				
<b>Audit Notes:</b>					
<b>Version:</b>	<b>Phase:</b>	PLAN	<b>Tie On Depth:</b>	0.0	
<b>Vertical Section:</b>	<b>Depth From (TVD) (usft)</b>	<b>+N/-S (usft)</b>	<b>+E/-W (usft)</b>	<b>Direction (°)</b>	
	0.0	0.0	0.0	151.13	

<b>Plan Sections</b>										
Measured Depth (usft)	Inclination (°)	Azimuth (°)	Vertical Depth (usft)	+N/-S (usft)	+E/-W (usft)	Dogleg Rate (°/100usft)	Build Rate (°/100usft)	Turn Rate (°/100usft)	TFO (°)	Target
0.0	0.00	0.00	0.0	0.0	0.0	0.00	0.00	0.00	0.00	
375.0	0.00	0.00	375.0	0.0	0.0	0.00	0.00	0.00	0.00	
1,188.0	24.39	149.32	1,163.6	-146.6	87.0	3.00	3.00	0.00	149.32	
7,961.1	24.39	149.32	7,332.4	-2,552.0	1,513.9	0.00	0.00	0.00	0.00	
8,774.1	0.00	0.00	8,121.0	-2,698.6	1,600.8	3.00	-3.00	0.00	180.00	24D-26 - OHCR
8,875.8	1.53	250.00	8,222.7	-2,699.0	1,599.6	1.50	1.50	-108.11	250.00	
12,579.4	1.53	250.00	11,925.0	-2,732.8	1,506.9	0.00	0.00	0.00	0.00	24D-26 - PBHL

<b>Database:</b>	EDM 5000.1 Single User Db	<b>Local Co-ordinate Reference:</b>	Well BJU B26 FED 24D-26 496 - Slot BJU B26 FED 24D-26 496
<b>Company:</b>	Caerus Oil & Gas	<b>TVD Reference:</b>	RKB @ 8241.0usft (30')
<b>Project:</b>	Garfield County, CO	<b>MD Reference:</b>	RKB @ 8241.0usft (30')
<b>Site:</b>	BJU B26 496 Pad	<b>North Reference:</b>	True
<b>Well:</b>	BJU B26 FED 24D-26 496	<b>Survey Calculation Method:</b>	Minimum Curvature
<b>Wellbore:</b>	Wellbore #1		
<b>Design:</b>	Design #1		

## Planned Survey

Measured Depth (usft)	Inclination (°)	Azimuth (°)	Vertical Depth (usft)	+N/-S (usft)	+E/-W (usft)	Vertical Section (usft)	Dogleg Rate (°/100usft)	Build Rate (°/100usft)	Turn Rate (°/100usft)
0.0	0.00	0.00	0.0	0.0	0.0	0.0	0.00	0.00	0.00
100.0	0.00	0.00	100.0	0.0	0.0	0.0	0.00	0.00	0.00
200.0	0.00	0.00	200.0	0.0	0.0	0.0	0.00	0.00	0.00
300.0	0.00	0.00	300.0	0.0	0.0	0.0	0.00	0.00	0.00
<b>Build 3°/100'</b>									
375.0	0.00	0.00	375.0	0.0	0.0	0.0	0.00	0.00	0.00
400.0	0.75	149.32	400.0	-0.1	0.1	0.2	3.00	3.00	0.00
500.0	3.75	149.32	499.9	-3.5	2.1	4.1	3.00	3.00	0.00
600.0	6.75	149.32	599.5	-11.4	6.8	13.2	3.00	3.00	0.00
700.0	9.75	149.32	698.4	-23.7	14.1	27.6	3.00	3.00	0.00
800.0	12.75	149.32	796.5	-40.5	24.0	47.1	3.00	3.00	0.00
900.0	15.75	149.32	893.4	-61.7	36.6	71.7	3.00	3.00	0.00
1,000.0	18.75	149.32	988.9	-87.2	51.7	101.3	3.00	3.00	0.00
1,100.0	21.75	149.32	1,082.7	-116.9	69.4	135.9	3.00	3.00	0.00
<b>EOB @ 24.39° INC / 149.32° AZM</b>									
1,188.0	24.39	149.32	1,163.6	-146.6	87.0	170.3	3.00	3.00	0.00
1,200.0	24.39	149.32	1,174.6	-150.9	89.5	175.3	0.00	0.00	0.00
1,300.0	24.39	149.32	1,265.7	-186.4	110.6	216.6	0.00	0.00	0.00
1,400.0	24.39	149.32	1,356.7	-221.9	131.6	257.9	0.00	0.00	0.00
1,500.0	24.39	149.32	1,447.8	-257.4	152.7	299.1	0.00	0.00	0.00
1,600.0	24.39	149.32	1,538.9	-292.9	173.8	340.4	0.00	0.00	0.00
1,700.0	24.39	149.32	1,630.0	-328.4	194.8	381.7	0.00	0.00	0.00
1,800.0	24.39	149.32	1,721.1	-363.9	215.9	422.9	0.00	0.00	0.00
1,900.0	24.39	149.32	1,812.1	-399.5	237.0	464.2	0.00	0.00	0.00
2,000.0	24.39	149.32	1,903.2	-435.0	258.0	505.5	0.00	0.00	0.00
2,100.0	24.39	149.32	1,994.3	-470.5	279.1	546.8	0.00	0.00	0.00
2,200.0	24.39	149.32	2,085.4	-506.0	300.2	588.0	0.00	0.00	0.00
2,300.0	24.39	149.32	2,176.4	-541.5	321.2	629.3	0.00	0.00	0.00
2,400.0	24.39	149.32	2,267.5	-577.0	342.3	670.6	0.00	0.00	0.00
2,500.0	24.39	149.32	2,358.6	-612.5	363.4	711.8	0.00	0.00	0.00
2,600.0	24.39	149.32	2,449.7	-648.0	384.4	753.1	0.00	0.00	0.00
2,700.0	24.39	149.32	2,540.7	-683.6	405.5	794.4	0.00	0.00	0.00
2,800.0	24.39	149.32	2,631.8	-719.1	426.6	835.7	0.00	0.00	0.00
2,900.0	24.39	149.32	2,722.9	-754.6	447.6	876.9	0.00	0.00	0.00
3,000.0	24.39	149.32	2,814.0	-790.1	468.7	918.2	0.00	0.00	0.00
3,100.0	24.39	149.32	2,905.0	-825.6	489.8	959.5	0.00	0.00	0.00
3,200.0	24.39	149.32	2,996.1	-861.1	510.8	1,000.8	0.00	0.00	0.00
3,300.0	24.39	149.32	3,087.2	-896.6	531.9	1,042.0	0.00	0.00	0.00
3,400.0	24.39	149.32	3,178.3	-932.2	553.0	1,083.3	0.00	0.00	0.00
3,500.0	24.39	149.32	3,269.4	-967.7	574.0	1,124.6	0.00	0.00	0.00
<b>Wasatch</b>									
3,552.3	24.39	149.32	3,317.0	-986.3	585.1	1,146.2	0.00	0.00	0.00
3,600.0	24.39	149.32	3,360.4	-1,003.2	595.1	1,165.8	0.00	0.00	0.00
3,700.0	24.39	149.32	3,451.5	-1,038.7	616.2	1,207.1	0.00	0.00	0.00
3,800.0	24.39	149.32	3,542.6	-1,074.2	637.2	1,248.4	0.00	0.00	0.00
3,900.0	24.39	149.32	3,633.7	-1,109.7	658.3	1,289.7	0.00	0.00	0.00
4,000.0	24.39	149.32	3,724.7	-1,145.2	679.4	1,330.9	0.00	0.00	0.00
4,100.0	24.39	149.32	3,815.8	-1,180.8	700.4	1,372.2	0.00	0.00	0.00
4,200.0	24.39	149.32	3,906.9	-1,216.3	721.5	1,413.5	0.00	0.00	0.00
4,300.0	24.39	149.32	3,998.0	-1,251.8	742.6	1,454.7	0.00	0.00	0.00
4,400.0	24.39	149.32	4,089.0	-1,287.3	763.7	1,496.0	0.00	0.00	0.00
4,500.0	24.39	149.32	4,180.1	-1,322.8	784.7	1,537.3	0.00	0.00	0.00
4,600.0	24.39	149.32	4,271.2	-1,358.3	805.8	1,578.6	0.00	0.00	0.00

<b>Database:</b>	EDM 5000.1 Single User Db	<b>Local Co-ordinate Reference:</b>	Well BJU B26 FED 24D-26 496 - Slot BJU B26 FED 24D-26 496
<b>Company:</b>	Caerus Oil & Gas	<b>TVD Reference:</b>	RKB @ 8241.0usft (30')
<b>Project:</b>	Garfield County, CO	<b>MD Reference:</b>	RKB @ 8241.0usft (30')
<b>Site:</b>	BJU B26 496 Pad	<b>North Reference:</b>	True
<b>Well:</b>	BJU B26 FED 24D-26 496	<b>Survey Calculation Method:</b>	Minimum Curvature
<b>Wellbore:</b>	Wellbore #1		
<b>Design:</b>	Design #1		

Planned Survey									
Measured Depth (usft)	Inclination (°)	Azimuth (°)	Vertical Depth (usft)	+N/-S (usft)	+E/-W (usft)	Vertical Section (usft)	Dogleg Rate (°/100usft)	Build Rate (°/100usft)	Turn Rate (°/100usft)
4,700.0	24.39	149.32	4,362.3	-1,393.8	826.9	1,619.8	0.00	0.00	0.00
4,800.0	24.39	149.32	4,453.3	-1,429.4	847.9	1,661.1	0.00	0.00	0.00
4,900.0	24.39	149.32	4,544.4	-1,464.9	869.0	1,702.4	0.00	0.00	0.00
5,000.0	24.39	149.32	4,635.5	-1,500.4	890.1	1,743.7	0.00	0.00	0.00
5,100.0	24.39	149.32	4,726.6	-1,535.9	911.1	1,784.9	0.00	0.00	0.00
5,200.0	24.39	149.32	4,817.7	-1,571.4	932.2	1,826.2	0.00	0.00	0.00
5,300.0	24.39	149.32	4,908.7	-1,606.9	953.3	1,867.5	0.00	0.00	0.00
5,400.0	24.39	149.32	4,999.8	-1,642.4	974.3	1,908.7	0.00	0.00	0.00
5,500.0	24.39	149.32	5,090.9	-1,678.0	995.4	1,950.0	0.00	0.00	0.00
5,600.0	24.39	149.32	5,182.0	-1,713.5	1,016.5	1,991.3	0.00	0.00	0.00
5,700.0	24.39	149.32	5,273.0	-1,749.0	1,037.5	2,032.6	0.00	0.00	0.00
5,800.0	24.39	149.32	5,364.1	-1,784.5	1,058.6	2,073.8	0.00	0.00	0.00
5,900.0	24.39	149.32	5,455.2	-1,820.0	1,079.7	2,115.1	0.00	0.00	0.00
6,000.0	24.39	149.32	5,546.3	-1,855.5	1,100.7	2,156.4	0.00	0.00	0.00
6,100.0	24.39	149.32	5,637.3	-1,891.0	1,121.8	2,197.6	0.00	0.00	0.00
<b>Wasatch G</b>									
6,187.5	24.39	149.32	5,717.0	-1,922.1	1,140.2	2,233.7	0.00	0.00	0.00
6,200.0	24.39	149.32	5,728.4	-1,926.5	1,142.9	2,238.9	0.00	0.00	0.00
6,300.0	24.39	149.32	5,819.5	-1,962.1	1,163.9	2,280.2	0.00	0.00	0.00
6,400.0	24.39	149.32	5,910.6	-1,997.6	1,185.0	2,321.5	0.00	0.00	0.00
6,500.0	24.39	149.32	6,001.6	-2,033.1	1,206.1	2,362.7	0.00	0.00	0.00
<b>Fort Union</b>									
6,516.9	24.39	149.32	6,017.0	-2,039.1	1,209.6	2,369.7	0.00	0.00	0.00
6,600.0	24.39	149.32	6,092.7	-2,068.6	1,227.1	2,404.0	0.00	0.00	0.00
6,700.0	24.39	149.32	6,183.8	-2,104.1	1,248.2	2,445.3	0.00	0.00	0.00
6,800.0	24.39	149.32	6,274.9	-2,139.6	1,269.3	2,486.6	0.00	0.00	0.00
6,900.0	24.39	149.32	6,366.0	-2,175.1	1,290.3	2,527.8	0.00	0.00	0.00
7,000.0	24.39	149.32	6,457.0	-2,210.7	1,311.4	2,569.1	0.00	0.00	0.00
7,100.0	24.39	149.32	6,548.1	-2,246.2	1,332.5	2,610.4	0.00	0.00	0.00
7,200.0	24.39	149.32	6,639.2	-2,281.7	1,353.5	2,651.6	0.00	0.00	0.00
7,300.0	24.39	149.32	6,730.3	-2,317.2	1,374.6	2,692.9	0.00	0.00	0.00
7,400.0	24.39	149.32	6,821.3	-2,352.7	1,395.7	2,734.2	0.00	0.00	0.00
7,500.0	24.39	149.32	6,912.4	-2,388.2	1,416.7	2,775.5	0.00	0.00	0.00
7,600.0	24.39	149.32	7,003.5	-2,423.7	1,437.8	2,816.7	0.00	0.00	0.00
7,700.0	24.39	149.32	7,094.6	-2,459.3	1,458.9	2,858.0	0.00	0.00	0.00
7,800.0	24.39	149.32	7,185.6	-2,494.8	1,479.9	2,899.3	0.00	0.00	0.00
7,900.0	24.39	149.32	7,276.7	-2,530.3	1,501.0	2,940.5	0.00	0.00	0.00
<b>Drop 3°/100'</b>									
7,961.1	24.39	149.32	7,332.4	-2,552.0	1,513.9	2,965.8	0.00	0.00	0.00
8,000.0	23.22	149.32	7,368.0	-2,565.5	1,521.9	2,981.5	3.00	-3.00	0.00
8,100.0	20.22	149.32	7,460.8	-2,597.3	1,540.8	3,018.4	3.00	-3.00	0.00
8,200.0	17.22	149.32	7,555.5	-2,624.9	1,557.2	3,050.5	3.00	-3.00	0.00
8,300.0	14.22	149.32	7,651.8	-2,648.2	1,571.0	3,077.6	3.00	-3.00	0.00
8,400.0	11.22	149.32	7,749.3	-2,667.2	1,582.2	3,099.6	3.00	-3.00	0.00
8,500.0	8.22	149.32	7,847.9	-2,681.7	1,590.8	3,116.5	3.00	-3.00	0.00
8,600.0	5.22	149.32	7,947.2	-2,691.7	1,596.8	3,128.2	3.00	-3.00	0.00
8,700.0	2.22	149.32	8,047.0	-2,697.3	1,600.1	3,134.7	3.00	-3.00	0.00
<b>EOD @ Vertical / Build 1.5° / 100' - Ohio Creek / TOG</b>									
8,774.1	0.00	0.00	8,121.0	-2,698.6	1,600.8	3,136.1	3.00	-3.00	-201.62
8,800.0	0.39	250.00	8,146.9	-2,698.6	1,600.8	3,136.1	1.50	1.50	-424.11
<b>EOB @ 1.53° INC / 250.00° AZM</b>									
8,875.8	1.53	250.00	8,222.7	-2,699.0	1,599.6	3,135.9	1.50	1.50	0.00

<b>Database:</b>	EDM 5000.1 Single User Db	<b>Local Co-ordinate Reference:</b>	Well BJU B26 FED 24D-26 496 - Slot BJU B26 FED 24D-26 496
<b>Company:</b>	Caerus Oil & Gas	<b>TVD Reference:</b>	RKB @ 8241.0usft (30')
<b>Project:</b>	Garfield County, CO	<b>MD Reference:</b>	RKB @ 8241.0usft (30')
<b>Site:</b>	BJU B26 496 Pad	<b>North Reference:</b>	True
<b>Well:</b>	BJU B26 FED 24D-26 496	<b>Survey Calculation Method:</b>	Minimum Curvature
<b>Wellbore:</b>	Wellbore #1		
<b>Design:</b>	Design #1		

Planned Survey										
Measured Depth (usft)	Inclination (°)	Azimuth (°)	Vertical Depth (usft)	+N/-S (usft)	+E/-W (usft)	Vertical Section (usft)	Dogleg Rate (°/100usft)	Build Rate (°/100usft)	Turn Rate (°/100usft)	
8,900.0	1.53	250.00	8,246.9	-2,699.2	1,599.0	3,135.8	0.00	0.00	0.00	
<b>Williams Fork</b>										
8,995.1	1.53	250.00	8,342.0	-2,700.1	1,596.6	3,135.4	0.00	0.00	0.00	
9,000.0	1.53	250.00	8,346.9	-2,700.2	1,596.5	3,135.4	0.00	0.00	0.00	
9,100.0	1.53	250.00	8,446.8	-2,701.1	1,594.0	3,135.0	0.00	0.00	0.00	
9,200.0	1.53	250.00	8,546.8	-2,702.0	1,591.5	3,134.6	0.00	0.00	0.00	
9,300.0	1.53	250.00	8,646.8	-2,702.9	1,588.9	3,134.2	0.00	0.00	0.00	
9,400.0	1.53	250.00	8,746.7	-2,703.8	1,586.4	3,133.7	0.00	0.00	0.00	
9,500.0	1.53	250.00	8,846.7	-2,704.7	1,583.9	3,133.3	0.00	0.00	0.00	
9,600.0	1.53	250.00	8,946.7	-2,705.6	1,581.4	3,132.9	0.00	0.00	0.00	
9,700.0	1.53	250.00	9,046.6	-2,706.5	1,578.9	3,132.5	0.00	0.00	0.00	
9,800.0	1.53	250.00	9,146.6	-2,707.4	1,576.4	3,132.1	0.00	0.00	0.00	
9,900.0	1.53	250.00	9,246.6	-2,708.4	1,573.9	3,131.7	0.00	0.00	0.00	
10,000.0	1.53	250.00	9,346.5	-2,709.3	1,571.4	3,131.3	0.00	0.00	0.00	
10,100.0	1.53	250.00	9,446.5	-2,710.2	1,568.9	3,130.9	0.00	0.00	0.00	
10,200.0	1.53	250.00	9,546.5	-2,711.1	1,566.4	3,130.5	0.00	0.00	0.00	
10,300.0	1.53	250.00	9,646.4	-2,712.0	1,563.9	3,130.0	0.00	0.00	0.00	
10,400.0	1.53	250.00	9,746.4	-2,712.9	1,561.4	3,129.6	0.00	0.00	0.00	
10,500.0	1.53	250.00	9,846.3	-2,713.8	1,558.9	3,129.2	0.00	0.00	0.00	
10,600.0	1.53	250.00	9,946.3	-2,714.7	1,556.4	3,128.8	0.00	0.00	0.00	
10,700.0	1.53	250.00	10,046.3	-2,715.6	1,553.9	3,128.4	0.00	0.00	0.00	
10,800.0	1.53	250.00	10,146.2	-2,716.6	1,551.4	3,128.0	0.00	0.00	0.00	
10,900.0	1.53	250.00	10,246.2	-2,717.5	1,548.9	3,127.6	0.00	0.00	0.00	
11,000.0	1.53	250.00	10,346.2	-2,718.4	1,546.4	3,127.2	0.00	0.00	0.00	
11,100.0	1.53	250.00	10,446.1	-2,719.3	1,543.9	3,126.8	0.00	0.00	0.00	
11,200.0	1.53	250.00	10,546.1	-2,720.2	1,541.4	3,126.4	0.00	0.00	0.00	
11,300.0	1.53	250.00	10,646.1	-2,721.1	1,538.9	3,125.9	0.00	0.00	0.00	
11,400.0	1.53	250.00	10,746.0	-2,722.0	1,536.4	3,125.5	0.00	0.00	0.00	
11,500.0	1.53	250.00	10,846.0	-2,722.9	1,533.9	3,125.1	0.00	0.00	0.00	
11,600.0	1.53	250.00	10,946.0	-2,723.8	1,531.4	3,124.7	0.00	0.00	0.00	
11,700.0	1.53	250.00	11,045.9	-2,724.8	1,528.9	3,124.3	0.00	0.00	0.00	
11,800.0	1.53	250.00	11,145.9	-2,725.7	1,526.4	3,123.9	0.00	0.00	0.00	
<b>Cameo</b>										
11,879.1	1.53	250.00	11,225.0	-2,726.4	1,524.4	3,123.6	0.00	0.00	0.00	
11,900.0	1.53	250.00	11,245.9	-2,726.6	1,523.9	3,123.5	0.00	0.00	0.00	
12,000.0	1.53	250.00	11,345.8	-2,727.5	1,521.4	3,123.1	0.00	0.00	0.00	
12,100.0	1.53	250.00	11,445.8	-2,728.4	1,518.9	3,122.7	0.00	0.00	0.00	
12,200.0	1.53	250.00	11,545.7	-2,729.3	1,516.4	3,122.2	0.00	0.00	0.00	
12,300.0	1.53	250.00	11,645.7	-2,730.2	1,513.9	3,121.8	0.00	0.00	0.00	
<b>Rollins</b>										
12,379.3	1.53	250.00	11,725.0	-2,730.9	1,511.9	3,121.5	0.00	0.00	0.00	
12,400.0	1.53	250.00	11,745.7	-2,731.1	1,511.4	3,121.4	0.00	0.00	0.00	
12,500.0	1.53	250.00	11,845.6	-2,732.0	1,508.9	3,121.0	0.00	0.00	0.00	
<b>TD @ 12579.4' MD / 11925.0' TVD</b>										
12,579.4	1.53	250.00	11,925.0	-2,732.8	1,506.9	3,120.7	0.00	0.00	0.00	

<b>Database:</b>	EDM 5000.1 Single User Db	<b>Local Co-ordinate Reference:</b>	Well BJU B26 FED 24D-26 496 - Slot BJU B26 FED 24D-26 496
<b>Company:</b>	Caerus Oil & Gas	<b>TVD Reference:</b>	RKB @ 8241.0usft (30')
<b>Project:</b>	Garfield County, CO	<b>MD Reference:</b>	RKB @ 8241.0usft (30')
<b>Site:</b>	BJU B26 496 Pad	<b>North Reference:</b>	True
<b>Well:</b>	BJU B26 FED 24D-26 496	<b>Survey Calculation Method:</b>	Minimum Curvature
<b>Wellbore:</b>	Wellbore #1		
<b>Design:</b>	Design #1		

### Design Targets

Target Name - hit/miss target - Shape	Dip Angle (°)	Dip Dir. (°)	TVD (usft)	+N/-S (usft)	+E/-W (usft)	Northing (usft)	Easting (usft)	Latitude	Longitude
24D-26 - OHCR - plan hits target center - Ellipse (radii L100.0 W50.0 on 250.00 azi)	0.00	0.00	8,121.0	-2,698.6	1,600.8	14,418,679.99	2,447,529.83	39.669713	-108.132048
24D-26 - PBHL - plan hits target center - Point	0.00	0.00	11,925.0	-2,732.8	1,506.9	14,418,642.80	2,447,437.00	39.669619	-108.132381

### Formations

Measured Depth (usft)	Vertical Depth (usft)	Name	Lithology	Dip (°)	Dip Direction (°)
3,552.3	3,317.0	Wasatch			
6,187.5	5,717.0	Wasatch G			
6,516.9	6,017.0	Fort Union			
8,774.1	8,121.0	Ohio Creek / TOG			
8,995.1	8,342.0	Williams Fork			
11,879.1	11,225.0	Cameo			
12,379.3	11,725.0	Rollins			

### Plan Annotations

Measured Depth (usft)	Vertical Depth (usft)	Local Coordinates		Comment
		+N/-S (usft)	+E/-W (usft)	
375.0	375.0	0.0	0.0	Build 3°/100'
1,188.0	1,163.6	-146.6	87.0	EOB @ 24.39° INC / 149.32° AZM
7,961.1	7,332.4	-2,552.0	1,513.9	Drop 3°/100'
8,774.1	8,121.0	-2,698.6	1,600.8	EOD @ Vertical / Build 1.5° / 100'
8,875.8	8,222.7	-2,699.0	1,599.6	EOB @ 1.53° INC / 250.00° AZM
12,579.4	11,925.0	-2,732.8	1,506.9	TD @ 12579.4' MD / 11925.0' TVD