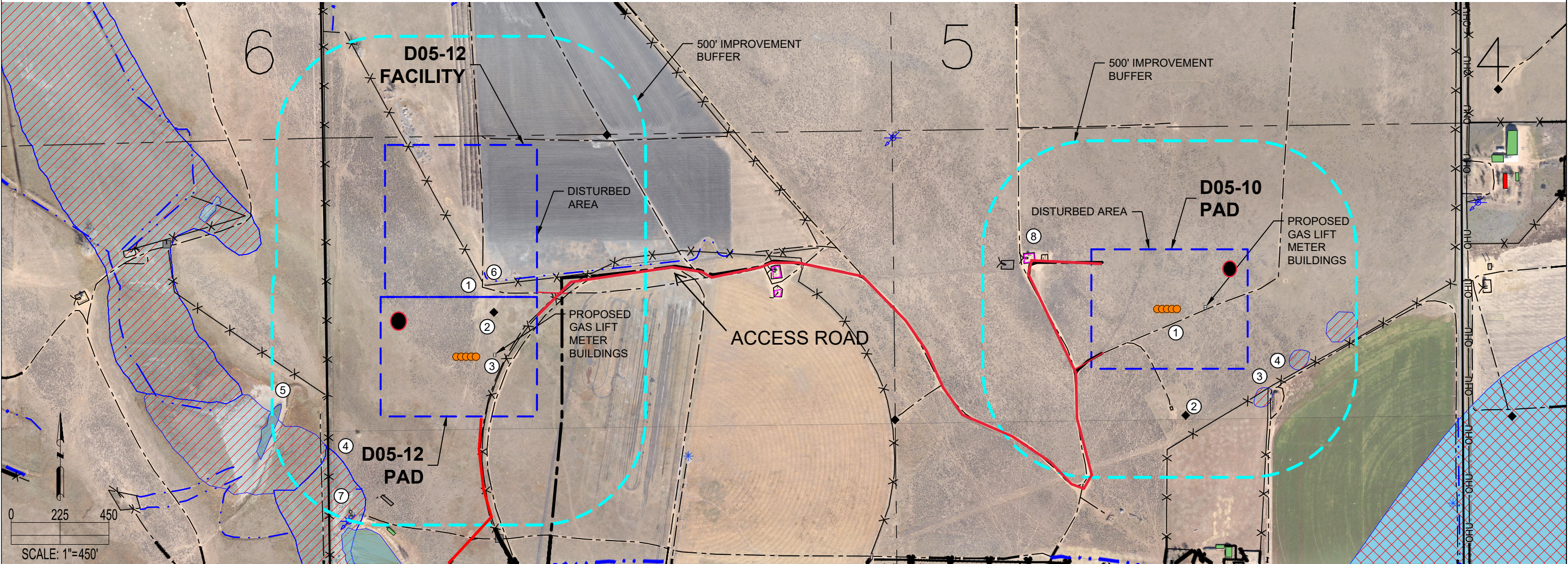


D05-12 FACILITY, D05-12 PAD, & D05-10 PAD
LOCATION DRAWING



D05-12 FACILITY & PAD

D05-10 PAD

IMPROVEMENTS: (AS MEASURED FROM THE PROPOSED EDGE OF DISTURBANCE)		IMPROVEMENTS: (AS MEASURED FROM THE PROPOSED EDGE OF DISTURBANCE)	
1. PRIVATE ROAD:	0', 0', 0', ±24' N, ±278' W, ±311' NE, ±464' SW	1. PRIVATE ROAD:	0', 0', ±81' SW, ±146' SE
2. OIL/GAS WELL:	0', ±325' NE	2. OIL/GAS WELL:	±214' S
3. FENCE:	0', 0', 0', ±241' W, ±243' W, ±361' S, ±452' SW	3. FENCE:	±125' SE, ±129' SE, ±173' S, ±200' W, ±259' W, ±356' W
4. WETLANDS (DRY AT TIME OF OBSERVATION):	±268' SW	4. WETLANDS (DRY AT TIME OF OBSERVATION):	±107' SE, ±191' E, ±361' E
5. POND:	±458' W	5. POND:	N/A
6. DITCH:	0'	6. DITCH:	N/A
7. ABOVE GROUND UTILITY:	±452' SW, ±457' SW	7. ABOVE GROUND UTILITY:	N/A
8. EXISTING PRODUCTION EQUIPMENT (NOBLE):	N/A	8. EXISTING PRODUCTION EQUIPMENT (NOBLE):	±262' W
PROPERTY LINE:	±245' W	PROPERTY LINE:	±326' W

DISCLAIMER:
THIS PLOT DOES NOT REPRESENT A MONUMENTED LAND SURVEY AND SHOULD NOT BE RELIED UPON TO DETERMINE BOUNDARY LINES, PROPERTY OWNERSHIP OR OTHER PROPERTY INTERESTS. PARCEL LINES, IF DEPICTED HAVE NOT BEEN FIELD VERIFIED AND MAY BE BASED UPON PUBLICLY AVAILABLE DATA THAT ALSO HAS NOT BEEN INDEPENDENTLY VERIFIED.

CURRENT SURFACE USE: RANGELAND
FUTURE SURFACE USE: RANGELAND

7535 Hilltop Circle
Denver, CO 80221
(303) 928-7128
www.ascentgeomatics.com

FIELD DATE:
09-13-18

DRAWN BY:
ACM

DRAWING DATE:
10-19-18

CHECKED BY:
MJE

SITE NAME:
D05-12 FACILITY, D05-12 PAD, & D05-10 PAD

SURFACE LOCATION:
SEC. 5, T3N, R64W, 6TH P.M.
WELD COUNTY, COLORADO

DATA SOURCE:
AERIAL IMAGERY: ASCENT 11/2017
WATER WELLS: COLORADO DWR
NHD: USGS

PUBLICLY AVAILABLE DATA SOURCES HAVE NOT BEEN INDEPENDENTLY VERIFIED BY ASCENT.

LEGEND:

- PROPOSED WELL
- EXISTING WELL
- FENCE
- OVERHEAD UTILITY
- WATER WELL
- IRRIGATION DITCH
- CONCRETE DITCH
- PIVOT POINT
- DISTURBANCE AREA
- 500' RADIUS
- BUILDING UNIT
- BUILDING
- PROPOSED ACCESS ROAD
- WETLANDS
- FLOODPLAIN
- POND
- CATTLE GAURD
- ABOVE GROUND UTILITY
- SECTION LINE
- CENTER SECTION LINE
- EXISTING FACILITY
- EXISTING ROAD

EXHIBIT M

Mustang CDP Econode multi-well facility capable of handling up to 32 wells

