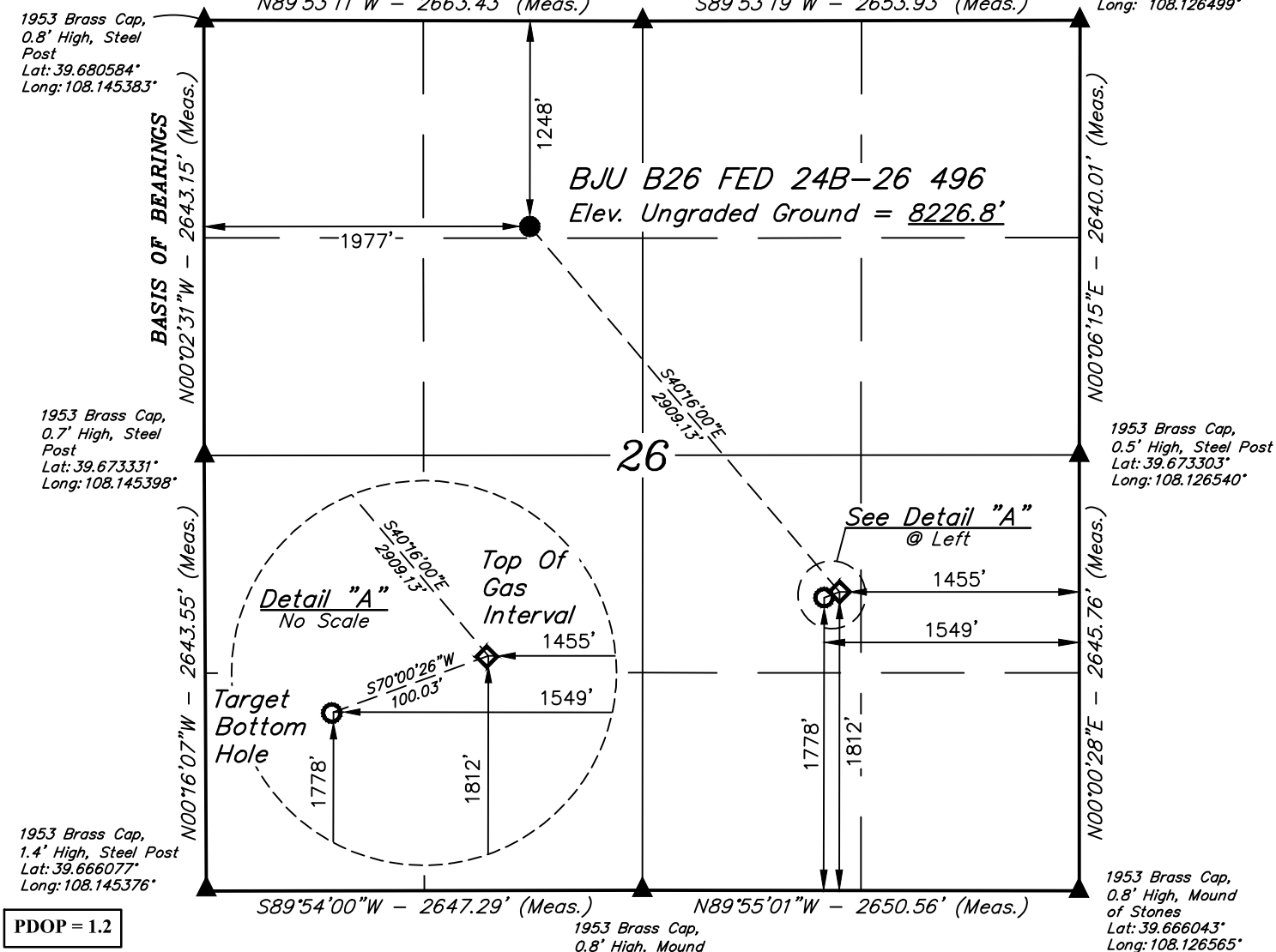


T4S, R96W, 6th P.M.

- 1953 Brass Cap,
1.0' High, Mound
of Stones
Lat: 39.680552°
Long: 108.135924°

1953 Brass Cap,
0.5' High, Mound
of Stones, Steel Post
Lat: 39.680548°
Long: 108.126499°



PDOP = 1.2

NAD 83 (SURFACE LOCATION)
LATITUDE = 39°40'37.69" (39.677136)
LONGITUDE = 108°08'18.13" (108.138371)
NAD 27 (SURFACE LOCATION)
LATITUDE = 39°40'37.78" (39.677160)
LONGITUDE = 108°08'15.85" (108.137735)
UTM NAD 27 (ZONE 12)
N: 14421341.08 E: 2445842.42
NAD 83 (TOP OF GAS INTERVAL)
LATITUDE = 39°40'15.71" (39.671031)
LONGITUDE = 108°07'54.17" (108.131713)
NAD 27 (TOP OF GAS INTERVAL)
LATITUDE = 39°40'15.80" (39.671056)
LONGITUDE = 108°07'51.88" (108.131078)
UTM NAD 27 (ZONE 12)
N: 14419177.79 E: 2447787.15

of Stones
Lat: 39.666
Long: 108.1

1000'
500'
0'

NAD 83 (TARGET BOTTOM HOLE)
LATITUDE = 39°40'15.38" (39.670938)
LONGITUDE = 108°07'55.37" (108.132047)

NAD 27 (TARGET BOTTOM HOLE)
LATITUDE = 39°40'15.47" (39.670963)
LONGITUDE = 108°07'53.08" (108.131412)

UTM NAD 27 (ZONE 12)
N: 14419140.84 E: 2447694.20

1953 Brass Cap,
0.8' High, Mound
of Stones
Lat: 39.666072°
Long: 108.135977°

Distances referenced
on plat to section lines
are perpendicular.

CERTIFICATE

THIS IS TO CERTIFY THAT THE ABOVE PLAN WAS PREPARED AND
LOCATION AS SHOWN WAS STAKED ON THE GROUND FROM FIELD NOTES
OF ACTUAL SURVEYS MADE BY ME OR UNDER MY SUPERVISION AND THAT
THE SAME ARE TRUE AND CORRECT TO THE BEST OF MY KNOWLEDGE AND
BELIEF.

REGISTERED LAND SURVEYOR
REGISTRATION NO. 38130
STATE OF COLORADO
08-03-20

BEARINGS ARE BASED ON THE ASSUMPTION THAT THE WEST LINE OF THE NORTHWEST 1/4 OF SECTION 26 BEARS N00°02'31"W. MONUMENTS DESCRIBED HEREON

BENCH MARK (H79) LOCATED IN THE NE 1/4 OF SECTION 35, T4S, R98W, 6th P.M., TAKEN FROM THE BULL FORK QUADRANGLE, COLORADO, 7.5 MINUTE SERIES, (TOPOGRAPHIC MAP) PUBLISHED BY THE UNITED STATES DEPARTMENT OF THE INTERIOR, GEOLOGICAL SURVEY. SAID ELEVATION IS MARKED AS BEING 8535 FEET.



UELS, LLC
Corporate Office * 85 South 200 East
Vernal, UT 84078 * (435) 789-1017

**Caerus Oil & Gas LLC**

BJU B26 FED 24B-26 496
NE 1/4 NW 1/4, SECTION 26, T4S, R96W, 6th P.M.
GARFIELD COUNTY, COLORADO

SURVEYED BY	DAYTON SLAUGH, K.H.	03-09-20	SCALE
DRAWN BY	T.L.L.	08-11-20	1" = 1000'

WELL LOCATION PLAT