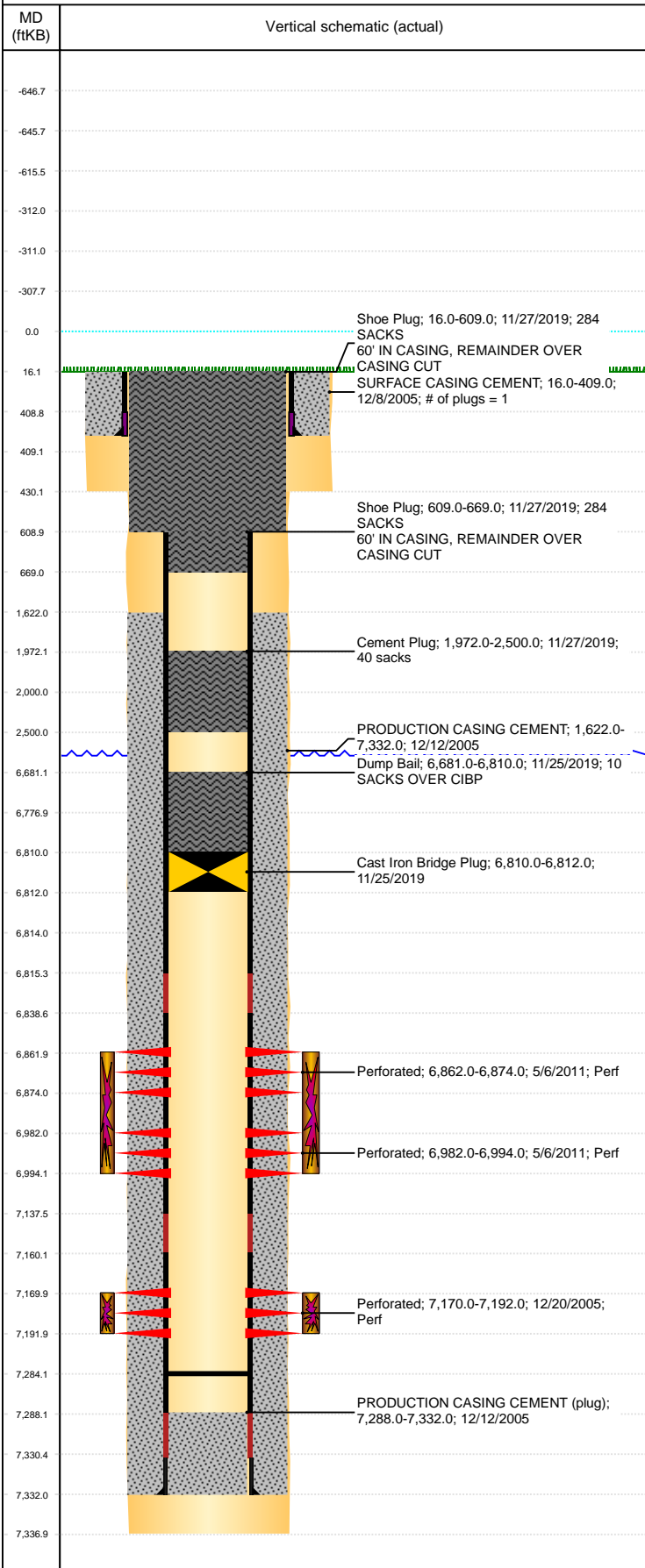


**Well Name: RAGAN N14-17**

VERTICAL, ORIGINAL HOLE, 8/27/2020 9:36:01 AM



Well Header										
API 05-123-23316		Business Unit DJ BASIN		District 15		Well Config VERTICAL				
KB - GL / MSL (ft... 16.00		Spud Date 12/7/2005		P & A Date 3/18/2020		Well Production Status PA		SoRT Yes		
Comment										
Surface Location (Congressional)										
Qtr 3 C	Qtr 4 NE	Section 14	Twonshp 5	Twonsh... N	Range 67	Rng E/... W	Actual Latitude (°) 40.40306017	Actual Longitude (°) -104.85567475		
Wellbore Sections										
Section Des		Size (in)		Act Top, MD (ftKB)		Act Btm, MD (ftKB)				
SURFACE		12 1/4		16		430				
PRODUCTION		7 7/8		430		7,337				
Casing Strings										
Csg Des		Run Date		OD (in)		Wt/Len (lb/ft)		Grade		
Surface		12/8/2005		8 5/8		24.00		J-55		
Production		12/12/2005		4 1/2		11.60		M-80		
Top, MD (ftKB)		MD (ftKB)								
16.0		409.0								
16.1		7,332.0								
Cement										
Des		Start Date		Top (ftKB)		Btm (ftKB)				
SURFACE CASING CEMENT		12/8/2005		16.0		409.0				
PRODUCTION CASING CEMENT		12/12/2005		1,622.0		7,332.0				
Dump Bail		11/25/2019		6,681.0		6,810.0				
Cement Plug		11/27/2019		1,972.0		2,500.0				
Shoe Plug		11/27/2019		609.0		669.0				
Shoe Plug		11/27/2019		16.0		609.0				
Zone Statuses										
Zone Name		Status Date		Status		Fluid Type		Job		Prod Method
CODELL		5/7/2011		PR				RE-FRAC & RECOMPLETE, 4/28/2011 06:30		
CODELL		12/2/2019		P&A				PLUG AND ABANDON, 11/22/2019 00:00		
NIOBRARA		5/7/2011		PR				RE-FRAC & RECOMPLETE, 4/28/2011 06:30		
NIOBRARA		12/2/2019		P&A				PLUG AND ABANDON, 11/22/2019 00:00		
Perforation Data										
Linked Zone		Bnch/Stg		Entered Shot Total		Top (ftKB)		Btm (ftKB)		Date
NIOBRARA, ORIGINAL HOLE		A		24		6,862.00		6,874.00		5/6/2011
NIOBRARA, ORIGINAL HOLE		B		24		6,982.00		6,994.00		5/6/2011
CODELL, ORIGINAL HOLE				88		7,170.00		7,192.00		12/20/2005
Stimulation Intervals										
Zone		Start Date		Top (ftKB)		Btm (ftKB)				
NIOBRARA, ORIGINAL HOLE		5/6/2011		6,862.0		6,994.0				
CODELL, ORIGINAL HOLE		1/11/2006		7,170.0		7,192.0				
CODELL, ORIGINAL HOLE		5/6/2011		7,170.0		7,192.0				
Other In Hole										
Run Date		Des		Make		OD (in)		Top (ftKB)		Btm (ftKB)
11/25/2019		Cast Iron Bridge Plug				3.99		6,810.0		6,812.0
Logs										
Date		Type		Top, MD (ftKB)		Btm, MD (ftKB)				
12/12/2005		COMPENSATED DENSITY		3,550.0		7,337.0				
12/12/2005		INDUCTION		410.0		7,337.0				
12/19/2005		CBL/CCL/GR		1,500.0		7,265.0				
5/23/2017		GYRO		0.0		7,100.0				
Plug Back Total Depths										
Date		Type		Com		Depth (ftKB)				
12/19/2005				DEPTH LOGGER		7,265.0				
5/19/2011		PLUG REMNANTS		DRILL 2 COMPOSITE PLUGS W/ VAREL ROCK BIT, PUMP OF...		7,284.0				