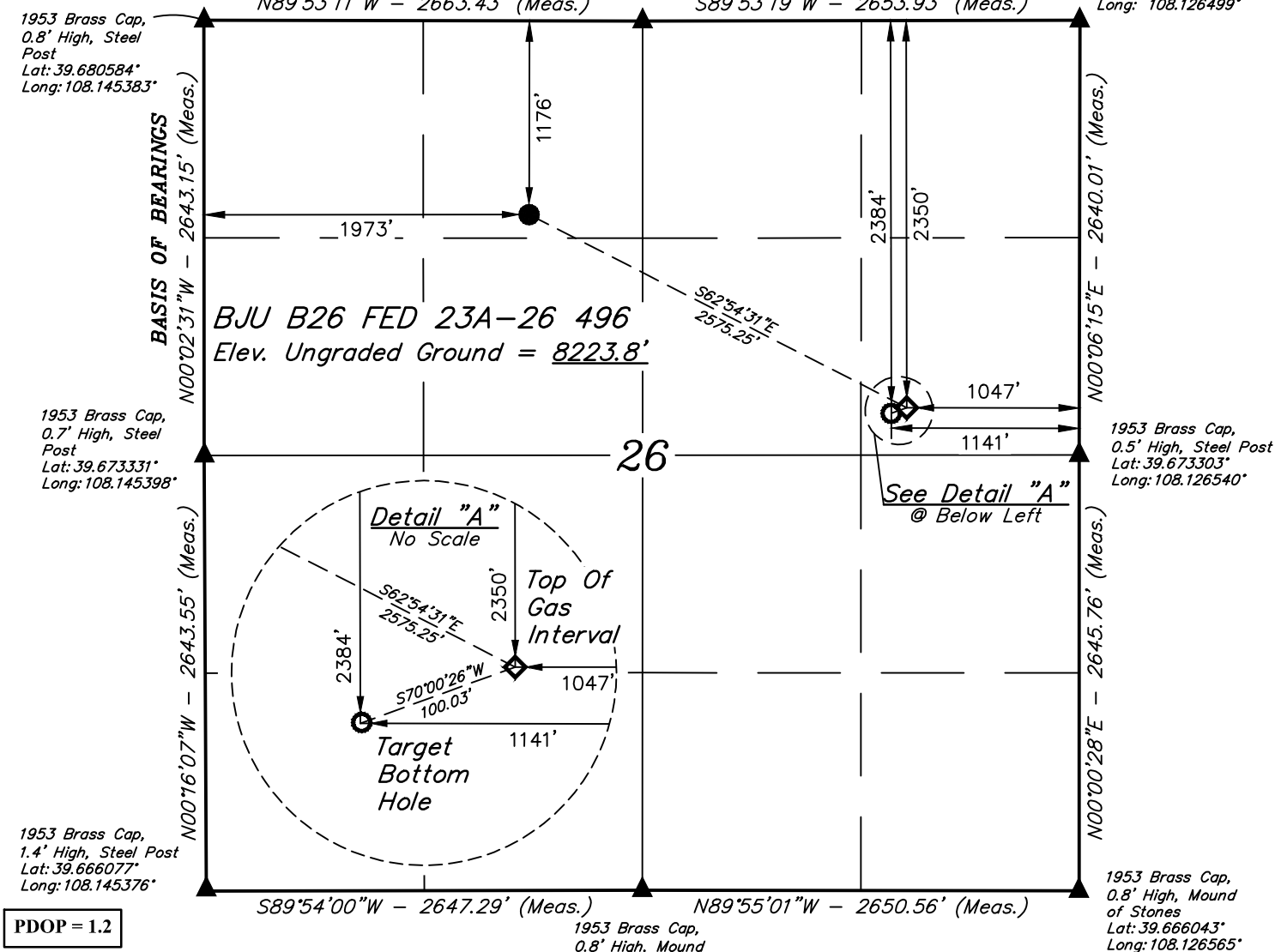


T4S, R96W, 6th P.M.

- 1953 Brass Cap,
1.0' High, Mound
of Stones
Lat: 39.680552°
Long: 108.135924°

1953 Brass Cap,
0.5' High, Mound
of Stones, Steel Post
Lat: 39.680548°
Long: 108.126499°



1953 Brass Cap,
0.8' High, Mound
of Stones
Lat: 39.666072°
Long: 108.135977°

NOTE:
Distances referenced
on plat to section lines
are perpendicular.

A horizontal scale bar with alternating black and white segments. Above the bar, the markings '1000'', '500'', '0'', '500'', and '1000'' are printed from left to right, indicating distances in feet.

NAD 83 (TARGET BOTTOM HOLE)
LATITUDE = 39°40'26.43" (39.674007)
LONGITUDE = 108°07'50.11" (108.130587)
NAD 27 (TARGET BOTTOM HOLE)
LATITUDE = 39°40'26.51" (39.674031)
LONGITUDE = 108°07'47.83" (108.129952)
UTM NAD 27 (ZONE 12)
N: 14420271.68 E: 2448069.32

CERTIFICATE

THIS IS TO CERTIFY THAT THE ABOVE PLAT WAS PREPARED AND
LOCATION AS SHOWN WAS STAKED ON THE GROUND FROM FIELD NOTES
OF ACTUAL SURVEYS MADE BY ME OR UNDER MY SUPERVISION AND THAT
THE SAME ARE TRUE AND CORRECT TO THE BEST OF MY KNOWLEDGE AND
BELIEF.

Hansel Marshall

REGISTERED LAND SURVEYOR
REGISTRATION NO. 19180
STATE OF COLORADO

APPROVED FOR RECORD
JAN 10 2010
COUNTY CLERK
NIELSON JAMES E.
S.E.
68-075-20

BEARINGS ARE BASED ON THE ASSUMPTION THAT THE WEST LINE OF THE NORTHWEST 1/4 OF SECTION 26 BEARS N00°02'31"W. MONUMENTS DESCRIBED HEREON.

BENCH MARK (H79) LOCATED IN THE NE 1/4 OF SECTION 35, T4S, R98W, 6th P.M., TAKEN FROM THE BULL FORK QUADRANGLE, COLORADO, 7.5 MINUTE SERIES, (TOPOGRAPHIC MAP) PUBLISHED BY THE UNITED STATES DEPARTMENT OF THE INTERIOR, GEOLOGICAL SURVEY. SAID ELEVATION IS MARKED AS BEING 8535 FEET.



UELS, LLC
Corporate Office * 85 South 200 East
Vernal, UT 84078 * (435) 789-1017

**Caerus Oil & Gas LLC**

BJU B26 FED 23A-26 496
NE 1/4 NW 1/4, SECTION 26, T4S, R96W, 6th P.M.
GARFIELD COUNTY, COLORADO

SURVEYED BY	DAYTON SLAUGH, K.H.	03-09-20	SCALE
DRAWN BY	T.L.L.	08-11-20	1" = 1000'

WELL LOCATION PLAT