

Project: Garfield County, CO  
 Site: BJU B26 496 Pad  
 Well: BJU B26 FED 23A-26 496  
 Wellbore: Wellbore #1  
 Design: Design #1  
 Latitude: 39.677359  
 Longitude: -108.137749  
 Ground Level: 8211.0  
 RKB @ 8241.0usft (30')

# PROJECT DETAILS: Garfield County, CO

Geodetic System: Universal Transverse Mercator (US Survey Feet)  
 Datum: NAD 1927 - Western US  
 Ellipsoid: Clarke 1866  
 Zone: Zone 12N (114 W to 108 W)  
 System Datum: Mean Sea Level

## REFERENCE INFORMATION

Vertical (TVD) Reference: RKB @ 8241.0usft (30')  
 Section (VS) Reference: Slot - BJU B26 FED 23A-26 496(0.0N, 0.0E)  
 Measured Depth Reference: RKB @ 8241.0usft (30')  
 Calculation Method: Minimum Curvature

## SECTION DETAILS

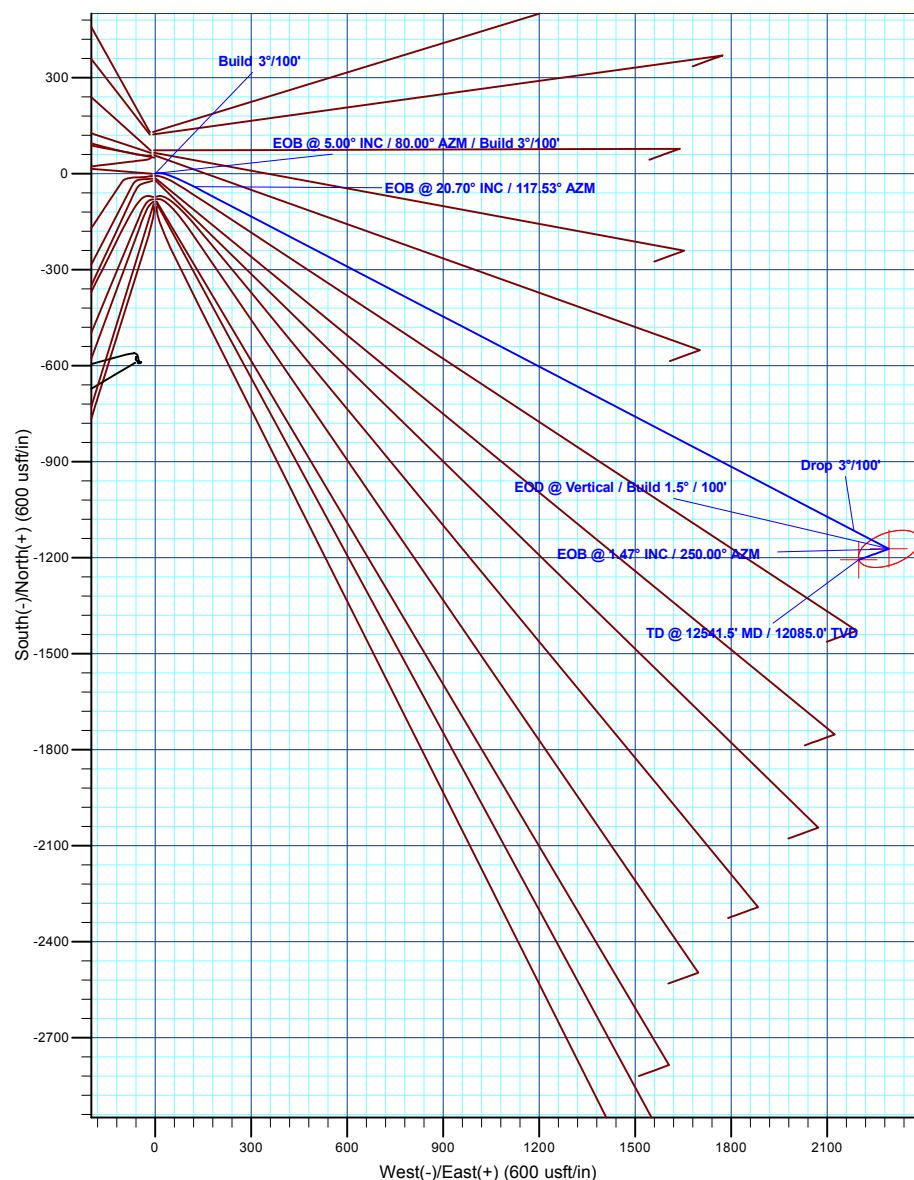
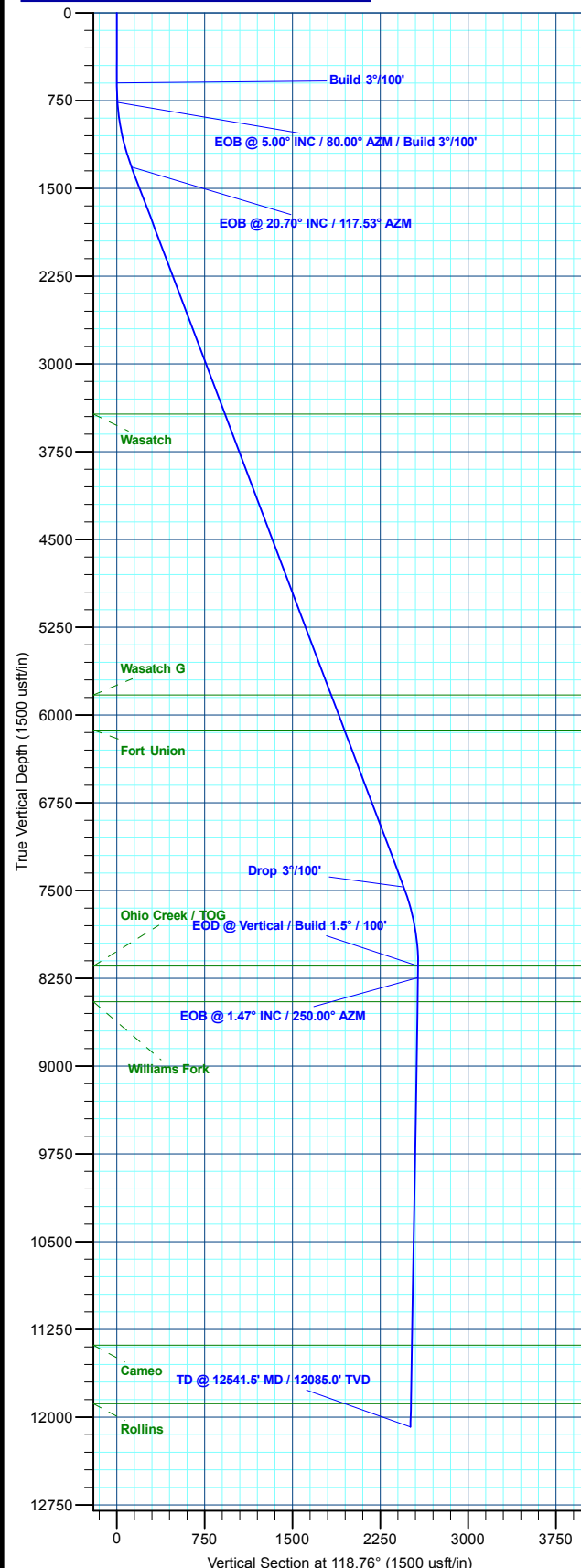
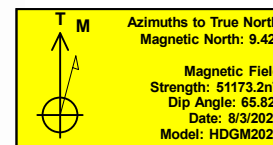
MD	Inc	Azi	TVD	+N/-S	+E/-W	Dleg	TFace	VSect	Annotation
0.0	0.00	0.00	0.0	0.0	0.0	0.00	0.00	0.0	
600.0	0.00	0.00	600.0	0.0	0.0	0.00	0.00	0.0	Build 3°/100'
766.7	5.00	80.00	766.5	1.3	7.2	3.00	80.00	5.7	EOB @ 5.00° INC / 80.00° AZM / Build 3°/100'
1333.4	20.70	117.53	1317.8	-41.1	121.1	3.00	47.43	126.0	EOB @ 20.70° INC / 117.53° AZM
7911.1	20.70	117.53	7470.8	-1115.8	2183.3	0.00	0.00	2450.8	Drop 3°/100'
8601.2	0.00	0.00	8146.0	-1172.8	2292.7	3.00	180.00	2574.1	EOD @ Vertical / Build 1.5° / 100'
8699.4	1.47	250.00	8244.2	-1173.2	2291.5	1.50	250.00	2573.3	EOB @ 1.47° INC / 250.00° AZM
12541.5	1.47	250.00	12085.0	-1207.0	2198.7	0.00	0.00	2508.2	TD @ 12541.5' MD / 12085.0' TVD

## DESIGN TARGET DETAILS

Name	TVD	+N/-S	+E/-W	Northing	Easting	Latitude	Longitude
23A-26 - OHCR	8146.0	-1172.8	2292.7	14420314.29	2448165.13	39.674140	-108.129607
23A-26 - PBHL	12085.0	-1207.0	2198.7	14420277.10	2448072.30	39.674046	-108.129941

## WELL DETAILS: BJU B26 FED 23A-26 496

+N/-S	+E/-W	Ground Level : 8211.0	Northing	Easting	Latitude	Longitude
0.0	0.0		14421413.30	2445836.20	39.677359	-108.137749



Plan: Design #1 (BJU B26 FED 23A-26 496/Wellbore #1)

Created By: Will Jircik

Date: 12:01, August 06 2020



## **Caerus Oil & Gas**

**Garfield County, CO**

**BJU B26 496 Pad**

**BJU B26 FED 23A-26 496 - Slot BJU B26 FED 23A-26 496**

**Wellbore #1**

**Plan: Design #1**

## **QES Well Planning Report**

**06 August, 2020**



<b>Database:</b>	EDM 5000.1 Single User Db	<b>Local Co-ordinate Reference:</b>	Well BJU B26 FED 23A-26 496 - Slot BJU B26 FED 23A-26 496
<b>Company:</b>	Caerus Oil & Gas	<b>TVD Reference:</b>	RKB @ 8241.0usft (30')
<b>Project:</b>	Garfield County, CO	<b>MD Reference:</b>	RKB @ 8241.0usft (30')
<b>Site:</b>	BJU B26 496 Pad	<b>North Reference:</b>	True
<b>Well:</b>	BJU B26 FED 23A-26 496	<b>Survey Calculation Method:</b>	Minimum Curvature
<b>Wellbore:</b>	Wellbore #1		
<b>Design:</b>	Design #1		

<b>Project</b>	Garfield County, CO		
<b>Map System:</b>	Universal Transverse Mercator (US Survey Fee	<b>System Datum:</b>	Mean Sea Level
<b>Geo Datum:</b>	NAD 1927 - Western US		
<b>Map Zone:</b>	Zone 12N (114 W to 108 W)		

Site		BJU B26 496 Pad				
Site Position:		Northing:	14,421,469.70 usft	Latitude:	39.677515	
From:	Map	Easting:	2,445,821.30 usft	Longitude:	-108.137796	
Position Uncertainty:		0.0 usft	Slot Radius:	13-3/16 "	Grid Convergence:	1.83 °

Well	BJU B26 FED 23A-26 496 - Slot BJU B26 FED 23A-26 496					
Well Position	+N/-S	-56.8 usft	Northing:	14,421,413.30 usft	Latitude:	39.677359
	+E/-W	13.1 usft	Easting:	2,445,836.20 usft	Longitude:	-108.137749
Position Uncertainty		0.0 usft	Wellhead Elevation:		Ground Level:	8,211.0 usft

<b>Wellbore</b>	Wellbore #1				
<b>Magnetics</b>	<b>Model Name</b>	<b>Sample Date</b>	<b>Declination (°)</b>	<b>Dip Angle (°)</b>	<b>Field Strength (nT)</b>
	HDGM2020	8/3/2020	9.42	65.82	51,173.20000000

<b>Design</b>	Design #1				
<b>Audit Notes:</b>					
<b>Version:</b>	<b>Phase:</b>	PLAN	<b>Tie On Depth:</b>	0.0	
<b>Vertical Section:</b>	<b>Depth From (TVD) (usft)</b>	<b>+N/-S (usft)</b>	<b>+E/-W (usft)</b>	<b>Direction (°)</b>	
	0.0	0.0	0.0	118.76	

<b>Plan Sections</b>										
<b>Measured Depth (usft)</b>	<b>Inclination (°)</b>	<b>Azimuth (°)</b>	<b>Vertical Depth (usft)</b>	<b>+N/-S (usft)</b>	<b>+E/-W (usft)</b>	<b>Dogleg Rate (°/100usft)</b>	<b>Build Rate (°/100usft)</b>	<b>Turn Rate (°/100usft)</b>	<b>TFO (°)</b>	<b>Target</b>
0.0	0.00	0.00	0.0	0.0	0.0	0.00	0.00	0.00	0.00	
600.0	0.00	0.00	600.0	0.0	0.0	0.00	0.00	0.00	0.00	
766.7	5.00	80.00	766.5	1.3	7.2	3.00	3.00	0.00	80.00	
1,333.4	20.70	117.53	1,317.8	-41.1	121.1	3.00	2.77	6.62	47.43	
7,911.1	20.70	117.53	7,470.8	-1,115.8	2,183.3	0.00	0.00	0.00	0.00	
8,601.2	0.00	0.00	8,146.0	-1,172.8	2,292.7	3.00	-3.00	0.00	180.00	23A-26 - OHCR
8,699.4	1.47	250.00	8,244.2	-1,173.2	2,291.5	1.50	1.50	-112.05	250.00	
12,541.5	1.47	250.00	12,085.0	-1,207.0	2,198.7	0.00	0.00	0.00	0.00	23A-26 - PBHL

<b>Database:</b>	EDM 5000.1 Single User Db	<b>Local Co-ordinate Reference:</b>	Well BJU B26 FED 23A-26 496 - Slot BJU B26 FED 23A-26 496
<b>Company:</b>	Caerus Oil & Gas	<b>TVD Reference:</b>	RKB @ 8241.0usft (30')
<b>Project:</b>	Garfield County, CO	<b>MD Reference:</b>	RKB @ 8241.0usft (30')
<b>Site:</b>	BJU B26 496 Pad	<b>North Reference:</b>	True
<b>Well:</b>	BJU B26 FED 23A-26 496	<b>Survey Calculation Method:</b>	Minimum Curvature
<b>Wellbore:</b>	Wellbore #1		
<b>Design:</b>	Design #1		

**Planned Survey**

Measured Depth (usft)	Inclination (°)	Azimuth (°)	Vertical Depth (usft)	+N/-S (usft)	+E/-W (usft)	Vertical Section (usft)	Dogleg Rate (°/100usft)	Build Rate (°/100usft)	Turn Rate (°/100usft)
0.0	0.00	0.00	0.0	0.0	0.0	0.0	0.00	0.00	0.00
100.0	0.00	0.00	100.0	0.0	0.0	0.0	0.00	0.00	0.00
200.0	0.00	0.00	200.0	0.0	0.0	0.0	0.00	0.00	0.00
300.0	0.00	0.00	300.0	0.0	0.0	0.0	0.00	0.00	0.00
400.0	0.00	0.00	400.0	0.0	0.0	0.0	0.00	0.00	0.00
500.0	0.00	0.00	500.0	0.0	0.0	0.0	0.00	0.00	0.00
<b>Build 3°/100'</b>									
600.0	0.00	0.00	600.0	0.0	0.0	0.0	0.00	0.00	0.00
700.0	3.00	80.00	700.0	0.5	2.6	2.0	3.00	3.00	0.00
<b>EOB @ 5.00° INC / 80.00° AZM / Build 3°/100'</b>									
766.7	5.00	80.00	766.5	1.3	7.2	5.7	3.00	3.00	0.00
800.0	5.72	87.40	799.6	1.6	10.2	8.2	3.00	2.17	22.21
900.0	8.25	100.98	898.9	0.4	22.3	19.3	3.00	2.52	13.58
1,000.0	11.01	108.03	997.5	-3.9	38.4	35.5	3.00	2.76	7.04
1,100.0	13.87	112.23	1,095.1	-11.4	58.6	56.8	3.00	2.86	4.21
1,200.0	16.78	115.01	1,191.6	-22.0	82.8	83.2	3.00	2.91	2.78
1,300.0	19.72	116.99	1,286.5	-35.8	110.9	114.4	3.00	2.94	1.98
<b>EOB @ 20.70° INC / 117.53° AZM</b>									
1,333.4	20.70	117.53	1,317.8	-41.1	121.1	126.0	3.00	2.95	1.61
1,400.0	20.70	117.53	1,380.2	-51.9	142.0	149.5	0.00	0.00	0.00
1,500.0	20.70	117.53	1,473.7	-68.3	173.4	184.9	0.00	0.00	0.00
1,600.0	20.70	117.53	1,567.2	-84.6	204.7	220.2	0.00	0.00	0.00
1,700.0	20.70	117.53	1,660.8	-101.0	236.1	255.5	0.00	0.00	0.00
1,800.0	20.70	117.53	1,754.3	-117.3	267.4	290.9	0.00	0.00	0.00
1,900.0	20.70	117.53	1,847.9	-133.6	298.8	326.2	0.00	0.00	0.00
2,000.0	20.70	117.53	1,941.4	-150.0	330.1	361.6	0.00	0.00	0.00
2,100.0	20.70	117.53	2,035.0	-166.3	361.5	396.9	0.00	0.00	0.00
2,200.0	20.70	117.53	2,128.5	-182.7	392.8	432.3	0.00	0.00	0.00
2,300.0	20.70	117.53	2,222.0	-199.0	424.2	467.6	0.00	0.00	0.00
2,400.0	20.70	117.53	2,315.6	-215.3	455.5	503.0	0.00	0.00	0.00
2,500.0	20.70	117.53	2,409.1	-231.7	486.9	538.3	0.00	0.00	0.00
2,600.0	20.70	117.53	2,502.7	-248.0	518.2	573.6	0.00	0.00	0.00
2,700.0	20.70	117.53	2,596.2	-264.3	549.6	609.0	0.00	0.00	0.00
2,800.0	20.70	117.53	2,689.8	-280.7	580.9	644.3	0.00	0.00	0.00
2,900.0	20.70	117.53	2,783.3	-297.0	612.3	679.7	0.00	0.00	0.00
3,000.0	20.70	117.53	2,876.8	-313.4	643.6	715.0	0.00	0.00	0.00
3,100.0	20.70	117.53	2,970.4	-329.7	675.0	750.4	0.00	0.00	0.00
3,200.0	20.70	117.53	3,063.9	-346.0	706.3	785.7	0.00	0.00	0.00
3,300.0	20.70	117.53	3,157.5	-362.4	737.7	821.0	0.00	0.00	0.00
3,400.0	20.70	117.53	3,251.0	-378.7	769.0	856.4	0.00	0.00	0.00
3,500.0	20.70	117.53	3,344.6	-395.1	800.4	891.7	0.00	0.00	0.00
<b>Wasatch</b>									
3,591.3	20.70	117.53	3,430.0	-410.0	829.0	924.0	0.00	0.00	0.00
3,600.0	20.70	117.53	3,438.1	-411.4	831.8	927.1	0.00	0.00	0.00
3,700.0	20.70	117.53	3,531.6	-427.7	863.1	962.4	0.00	0.00	0.00
3,800.0	20.70	117.53	3,625.2	-444.1	894.5	997.8	0.00	0.00	0.00
3,900.0	20.70	117.53	3,718.7	-460.4	925.8	1,033.1	0.00	0.00	0.00
4,000.0	20.70	117.53	3,812.3	-476.7	957.2	1,068.5	0.00	0.00	0.00
4,100.0	20.70	117.53	3,905.8	-493.1	988.5	1,103.8	0.00	0.00	0.00
4,200.0	20.70	117.53	3,999.4	-509.4	1,019.9	1,139.1	0.00	0.00	0.00
4,300.0	20.70	117.53	4,092.9	-525.8	1,051.2	1,174.5	0.00	0.00	0.00
4,400.0	20.70	117.53	4,186.4	-542.1	1,082.6	1,209.8	0.00	0.00	0.00
4,500.0	20.70	117.53	4,280.0	-558.4	1,113.9	1,245.2	0.00	0.00	0.00

<b>Database:</b>	EDM 5000.1 Single User Db	<b>Local Co-ordinate Reference:</b>	Well BJU B26 FED 23A-26 496 - Slot BJU B26 FED 23A-26 496
<b>Company:</b>	Caerus Oil & Gas	<b>TVD Reference:</b>	RKB @ 8241.0usft (30')
<b>Project:</b>	Garfield County, CO	<b>MD Reference:</b>	RKB @ 8241.0usft (30')
<b>Site:</b>	BJU B26 496 Pad	<b>North Reference:</b>	True
<b>Well:</b>	BJU B26 FED 23A-26 496	<b>Survey Calculation Method:</b>	Minimum Curvature
<b>Wellbore:</b>	Wellbore #1		
<b>Design:</b>	Design #1		

## Planned Survey

Measured Depth (usft)	Inclination (°)	Azimuth (°)	Vertical Depth (usft)	+N/-S (usft)	+E/-W (usft)	Vertical Section (usft)	Dogleg Rate (°/100usft)	Build Rate (°/100usft)	Turn Rate (°/100usft)
4,600.0	20.70	117.53	4,373.5	-574.8	1,145.3	1,280.5	0.00	0.00	0.00
4,700.0	20.70	117.53	4,467.1	-591.1	1,176.6	1,315.9	0.00	0.00	0.00
4,800.0	20.70	117.53	4,560.6	-607.5	1,208.0	1,351.2	0.00	0.00	0.00
4,900.0	20.70	117.53	4,654.1	-623.8	1,239.3	1,386.6	0.00	0.00	0.00
5,000.0	20.70	117.53	4,747.7	-640.1	1,270.7	1,421.9	0.00	0.00	0.00
5,100.0	20.70	117.53	4,841.2	-656.5	1,302.0	1,457.2	0.00	0.00	0.00
5,200.0	20.70	117.53	4,934.8	-672.8	1,333.4	1,492.6	0.00	0.00	0.00
5,300.0	20.70	117.53	5,028.3	-689.1	1,364.7	1,527.9	0.00	0.00	0.00
5,400.0	20.70	117.53	5,121.9	-705.5	1,396.1	1,563.3	0.00	0.00	0.00
5,500.0	20.70	117.53	5,215.4	-721.8	1,427.4	1,598.6	0.00	0.00	0.00
5,600.0	20.70	117.53	5,308.9	-738.2	1,458.8	1,634.0	0.00	0.00	0.00
5,700.0	20.70	117.53	5,402.5	-754.5	1,490.1	1,669.3	0.00	0.00	0.00
5,800.0	20.70	117.53	5,496.0	-770.8	1,521.5	1,704.7	0.00	0.00	0.00
5,900.0	20.70	117.53	5,589.6	-787.2	1,552.8	1,740.0	0.00	0.00	0.00
6,000.0	20.70	117.53	5,683.1	-803.5	1,584.2	1,775.3	0.00	0.00	0.00
6,100.0	20.70	117.53	5,776.7	-819.9	1,615.5	1,810.7	0.00	0.00	0.00
<b>Wasatch G</b>									
6,157.0	20.70	117.53	5,830.0	-829.2	1,633.4	1,830.8	0.00	0.00	0.00
6,200.0	20.70	117.53	5,870.2	-836.2	1,646.9	1,846.0	0.00	0.00	0.00
6,300.0	20.70	117.53	5,963.7	-852.5	1,678.2	1,881.4	0.00	0.00	0.00
6,400.0	20.70	117.53	6,057.3	-868.9	1,709.6	1,916.7	0.00	0.00	0.00
<b>Fort Union</b>									
6,477.7	20.70	117.53	6,130.0	-881.6	1,733.9	1,944.2	0.00	0.00	0.00
6,500.0	20.70	117.53	6,150.8	-885.2	1,740.9	1,952.1	0.00	0.00	0.00
6,600.0	20.70	117.53	6,244.4	-901.5	1,772.3	1,987.4	0.00	0.00	0.00
6,700.0	20.70	117.53	6,337.9	-917.9	1,803.6	2,022.8	0.00	0.00	0.00
6,800.0	20.70	117.53	6,431.5	-934.2	1,835.0	2,058.1	0.00	0.00	0.00
6,900.0	20.70	117.53	6,525.0	-950.6	1,866.3	2,093.4	0.00	0.00	0.00
7,000.0	20.70	117.53	6,618.5	-966.9	1,897.7	2,128.8	0.00	0.00	0.00
7,100.0	20.70	117.53	6,712.1	-983.2	1,929.0	2,164.1	0.00	0.00	0.00
7,200.0	20.70	117.53	6,805.6	-999.6	1,960.4	2,199.5	0.00	0.00	0.00
7,300.0	20.70	117.53	6,899.2	-1,015.9	1,991.7	2,234.8	0.00	0.00	0.00
7,400.0	20.70	117.53	6,992.7	-1,032.3	2,023.1	2,270.2	0.00	0.00	0.00
7,500.0	20.70	117.53	7,086.3	-1,048.6	2,054.4	2,305.5	0.00	0.00	0.00
7,600.0	20.70	117.53	7,179.8	-1,064.9	2,085.8	2,340.9	0.00	0.00	0.00
7,700.0	20.70	117.53	7,273.3	-1,081.3	2,117.1	2,376.2	0.00	0.00	0.00
7,800.0	20.70	117.53	7,366.9	-1,097.6	2,148.5	2,411.5	0.00	0.00	0.00
7,900.0	20.70	117.53	7,460.4	-1,113.9	2,179.8	2,446.9	0.00	0.00	0.00
<b>Drop 3°/100'</b>									
7,911.1	20.70	117.53	7,470.8	-1,115.8	2,183.3	2,450.8	0.00	0.00	0.00
8,000.0	18.04	117.53	7,554.7	-1,129.4	2,209.4	2,480.3	3.00	-3.00	0.00
8,100.0	15.04	117.53	7,650.5	-1,142.5	2,234.7	2,508.7	3.00	-3.00	0.00
8,200.0	12.04	117.53	7,747.7	-1,153.4	2,255.4	2,532.1	3.00	-3.00	0.00
8,300.0	9.04	117.53	7,846.0	-1,161.8	2,271.7	2,550.4	3.00	-3.00	0.00
8,400.0	6.04	117.53	7,945.2	-1,167.9	2,283.3	2,563.5	3.00	-3.00	0.00
8,500.0	3.04	117.53	8,044.8	-1,171.5	2,290.3	2,571.4	3.00	-3.00	0.00
<b>EOD @ Vertical / Build 1.5° / 100' - Ohio Creek / TOG</b>									
8,601.2	0.00	0.00	8,146.0	-1,172.8	2,292.7	2,574.1	3.00	-3.00	0.00
<b>EOB @ 1.47° INC / 250.00° AZM</b>									
8,699.4	1.47	250.00	8,244.2	-1,173.2	2,291.5	2,573.3	1.50	1.50	0.00
8,800.0	1.47	250.00	8,344.7	-1,174.1	2,289.1	2,571.6	0.00	0.00	0.00
8,900.0	1.47	250.00	8,444.7	-1,175.0	2,286.6	2,569.9	0.00	0.00	0.00

<b>Database:</b>	EDM 5000.1 Single User Db	<b>Local Co-ordinate Reference:</b>	Well BJU B26 FED 23A-26 496 - Slot BJU B26 FED 23A-26 496
<b>Company:</b>	Caerus Oil & Gas	<b>TVD Reference:</b>	RKB @ 8241.0usft (30')
<b>Project:</b>	Garfield County, CO	<b>MD Reference:</b>	RKB @ 8241.0usft (30')
<b>Site:</b>	BJU B26 496 Pad	<b>North Reference:</b>	True
<b>Well:</b>	BJU B26 FED 23A-26 496	<b>Survey Calculation Method:</b>	Minimum Curvature
<b>Wellbore:</b>	Wellbore #1		
<b>Design:</b>	Design #1		

## Planned Survey

Measured Depth (usft)	Inclination (°)	Azimuth (°)	Vertical Depth (usft)	+N/-S (usft)	+E/-W (usft)	Vertical Section (usft)	Dogleg Rate (°/100usft)	Build Rate (°/100usft)	Turn Rate (°/100usft)
<b>Williams Fork</b>									
8,905.3	1.47	250.00	8,450.0	-1,175.0	2,286.5	2,569.8	0.00	0.00	0.00
9,000.0	1.47	250.00	8,544.7	-1,175.8	2,284.2	2,568.2	0.00	0.00	0.00
9,100.0	1.47	250.00	8,644.6	-1,176.7	2,281.8	2,566.5	0.00	0.00	0.00
9,200.0	1.47	250.00	8,744.6	-1,177.6	2,279.4	2,564.8	0.00	0.00	0.00
9,300.0	1.47	250.00	8,844.6	-1,178.5	2,277.0	2,563.1	0.00	0.00	0.00
9,400.0	1.47	250.00	8,944.5	-1,179.4	2,274.6	2,561.4	0.00	0.00	0.00
9,500.0	1.47	250.00	9,044.5	-1,180.2	2,272.2	2,559.7	0.00	0.00	0.00
9,600.0	1.47	250.00	9,144.5	-1,181.1	2,269.7	2,558.0	0.00	0.00	0.00
9,700.0	1.47	250.00	9,244.4	-1,182.0	2,267.3	2,556.3	0.00	0.00	0.00
9,800.0	1.47	250.00	9,344.4	-1,182.9	2,264.9	2,554.6	0.00	0.00	0.00
9,900.0	1.47	250.00	9,444.4	-1,183.7	2,262.5	2,552.9	0.00	0.00	0.00
10,000.0	1.47	250.00	9,544.3	-1,184.6	2,260.1	2,551.3	0.00	0.00	0.00
10,100.0	1.47	250.00	9,644.3	-1,185.5	2,257.7	2,549.6	0.00	0.00	0.00
10,200.0	1.47	250.00	9,744.3	-1,186.4	2,255.3	2,547.9	0.00	0.00	0.00
10,300.0	1.47	250.00	9,844.2	-1,187.3	2,252.8	2,546.2	0.00	0.00	0.00
10,400.0	1.47	250.00	9,944.2	-1,188.1	2,250.4	2,544.5	0.00	0.00	0.00
10,500.0	1.47	250.00	10,044.2	-1,189.0	2,248.0	2,542.8	0.00	0.00	0.00
10,600.0	1.47	250.00	10,144.1	-1,189.9	2,245.6	2,541.1	0.00	0.00	0.00
10,700.0	1.47	250.00	10,244.1	-1,190.8	2,243.2	2,539.4	0.00	0.00	0.00
10,800.0	1.47	250.00	10,344.1	-1,191.7	2,240.8	2,537.7	0.00	0.00	0.00
10,900.0	1.47	250.00	10,444.0	-1,192.5	2,238.3	2,536.0	0.00	0.00	0.00
11,000.0	1.47	250.00	10,544.0	-1,193.4	2,235.9	2,534.3	0.00	0.00	0.00
11,100.0	1.47	250.00	10,644.0	-1,194.3	2,233.5	2,532.6	0.00	0.00	0.00
11,200.0	1.47	250.00	10,743.9	-1,195.2	2,231.1	2,530.9	0.00	0.00	0.00
11,300.0	1.47	250.00	10,843.9	-1,196.1	2,228.7	2,529.2	0.00	0.00	0.00
11,400.0	1.47	250.00	10,943.9	-1,196.9	2,226.3	2,527.5	0.00	0.00	0.00
11,500.0	1.47	250.00	11,043.8	-1,197.8	2,223.9	2,525.8	0.00	0.00	0.00
11,600.0	1.47	250.00	11,143.8	-1,198.7	2,221.4	2,524.2	0.00	0.00	0.00
11,700.0	1.47	250.00	11,243.8	-1,199.6	2,219.0	2,522.5	0.00	0.00	0.00
11,800.0	1.47	250.00	11,343.7	-1,200.5	2,216.6	2,520.8	0.00	0.00	0.00
<b>Cameo</b>									
11,841.3	1.47	250.00	11,385.0	-1,200.8	2,215.6	2,520.1	0.00	0.00	0.00
11,900.0	1.47	250.00	11,443.7	-1,201.3	2,214.2	2,519.1	0.00	0.00	0.00
12,000.0	1.47	250.00	11,543.7	-1,202.2	2,211.8	2,517.4	0.00	0.00	0.00
12,100.0	1.47	250.00	11,643.7	-1,203.1	2,209.4	2,515.7	0.00	0.00	0.00
12,200.0	1.47	250.00	11,743.6	-1,204.0	2,207.0	2,514.0	0.00	0.00	0.00
12,300.0	1.47	250.00	11,843.6	-1,204.8	2,204.5	2,512.3	0.00	0.00	0.00
<b>Rollins</b>									
12,341.4	1.47	250.00	11,885.0	-1,205.2	2,203.5	2,511.6	0.00	0.00	0.00
12,400.0	1.47	250.00	11,943.6	-1,205.7	2,202.1	2,510.6	0.00	0.00	0.00
12,500.0	1.47	250.00	12,043.5	-1,206.6	2,199.7	2,508.9	0.00	0.00	0.00
<b>TD @ 12541.5' MD / 12085.0' TVD</b>									
12,541.5	1.47	250.00	12,085.0	-1,207.0	2,198.7	2,508.2	0.00	0.00	0.00

<b>Database:</b>	EDM 5000.1 Single User Db	<b>Local Co-ordinate Reference:</b>	Well BJU B26 FED 23A-26 496 - Slot BJU B26 FED 23A-26 496
<b>Company:</b>	Caerus Oil & Gas	<b>TVD Reference:</b>	RKB @ 8241.0usft (30')
<b>Project:</b>	Garfield County, CO	<b>MD Reference:</b>	RKB @ 8241.0usft (30')
<b>Site:</b>	BJU B26 496 Pad	<b>North Reference:</b>	True
<b>Well:</b>	BJU B26 FED 23A-26 496	<b>Survey Calculation Method:</b>	Minimum Curvature
<b>Wellbore:</b>	Wellbore #1		
<b>Design:</b>	Design #1		

#### Design Targets

Target Name - hit/miss target - Shape	Dip Angle (°)	Dip Dir. (°)	TVD (usft)	+N/-S (usft)	+E/-W (usft)	Northing (usft)	Easting (usft)	Latitude	Longitude
23A-26 - OHCR - plan hits target center - Ellipse (radii L100.0 W50.0 on 250.00 azi)	0.00	0.00	8,146.0	-1,172.8	2,292.7	14,420,314.29	2,448,165.13	39.674140	-108.129607
23A-26 - PBHL - plan hits target center - Point	0.00	0.00	12,085.0	-1,207.0	2,198.7	14,420,277.10	2,448,072.30	39.674046	-108.129941

#### Formations

Measured Depth (usft)	Vertical Depth (usft)	Name	Lithology	Dip (°)	Dip Direction (°)
3,591.3	3,430.0	Wasatch			
6,157.0	5,830.0	Wasatch G			
6,477.7	6,130.0	Fort Union			
8,601.2	8,146.0	Ohio Creek / TOG			
8,905.3	8,450.0	Williams Fork			
11,841.3	11,385.0	Cameo			
12,341.4	11,885.0	Rollins			

#### Plan Annotations

Measured Depth (usft)	Vertical Depth (usft)	Local Coordinates		Comment
		+N/-S (usft)	+E/-W (usft)	
600.0	600.0	0.0	0.0	Build 3°/100'
766.7	766.5	1.3	7.2	EOB @ 5.00° INC / 80.00° AZM / Build 3°/100'
1,333.4	1,317.8	-41.1	121.1	EOB @ 20.70° INC / 117.53° AZM
7,911.1	7,470.8	-1,115.8	2,183.3	Drop 3°/100'
8,601.2	8,146.0	-1,172.8	2,292.7	EOD @ Vertical / Build 1.5° / 100'
8,699.4	8,244.2	-1,173.2	2,291.5	EOB @ 1.47° INC / 250.00° AZM
12,541.5	12,085.0	-1,207.0	2,198.7	TD @ 12541.5' MD / 12085.0' TVD