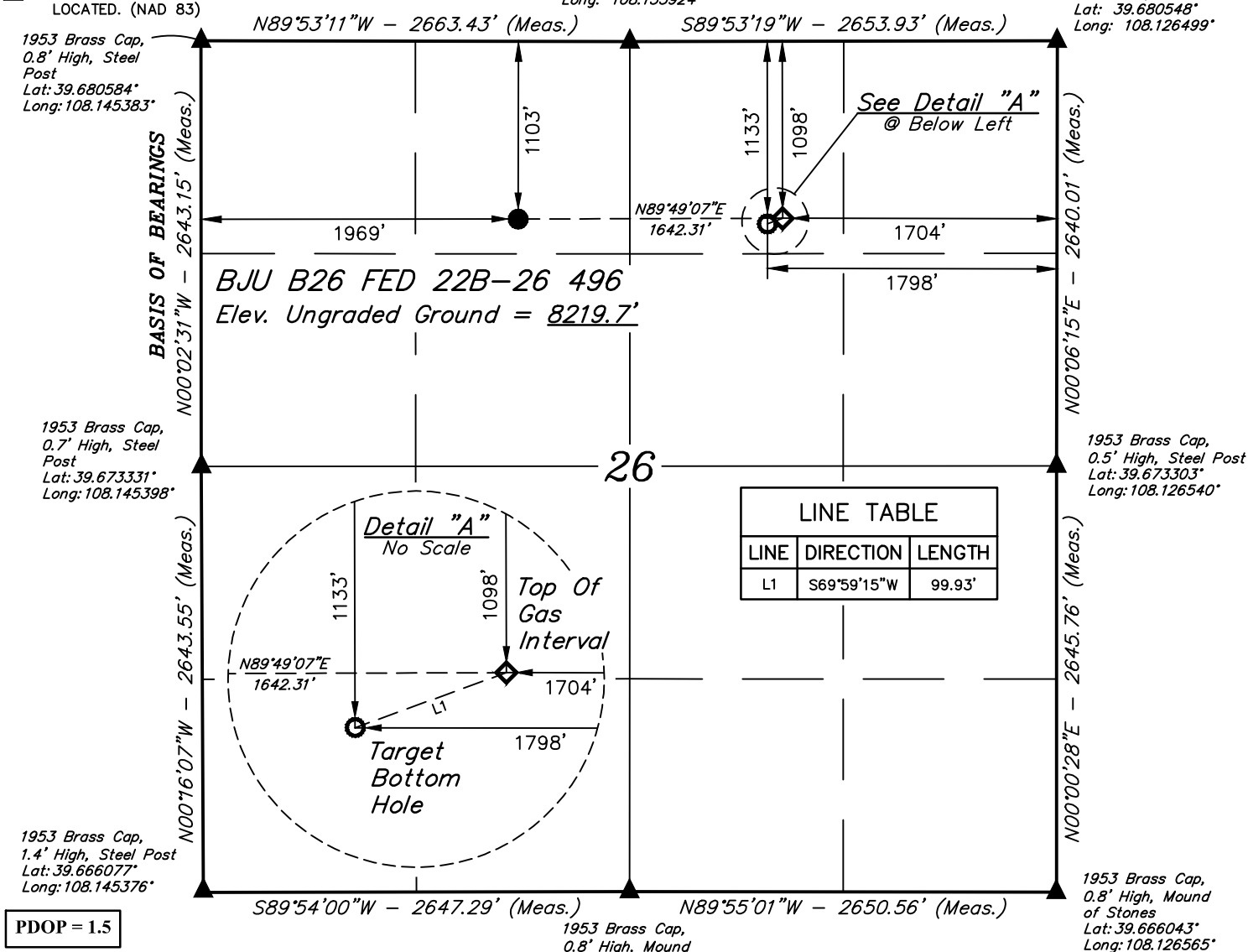


*T4S, R96W, 6th P.M.*

- 1953 Brass Cap,  
1.0' High, Mound  
of Stones  
Lat: 39.680552°  
Long: 108.135924°

1953 Brass Cap,  
0.5' High, Mound  
of Stones, Steel Post  
Lat: 39.680548°  
Long: 108.126499°



**PDOP = 1.5**

<b>NAD 83 (SURFACE LOCATION)</b>
LATITUDE = 39°40'39.12" (39.677533)
LONGITUDE = 108°08'18.23" (108.138399)
<b>NAD 27 (SURFACE LOCATION)</b>
LATITUDE = 39°40'39.21" (39.677557)
LONGITUDE = 108°08'15.95" (108.137763)
<b>UTM NAD 27 (ZONE 12)</b>
N: 14421485.53 E: 2445829.97
<b>NAD 83 (TOP OF GAS INTERVAL)</b>
LATITUDE = 39°40'39.13" (39.677536)
LONGITUDE = 108°07'57.24" (108.132566)
<b>NAD 27 (TOP OF GAS INTERVAL)</b>
LATITUDE = 39°40'39.22" (39.677560)
LONGITUDE = 108°07'54.95" (108.131931)
<b>UTM NAD 27 (ZONE 12)</b>
N: 14421539.11 E: 2447471.27

of Stones  
Lat: 39.666  
Long: 108.1

1000'  
500'  
0'

**NAD 83 (TARGET BOTTOM HOLE)**  
LATITUDE = 39°40'38.79" (39.677443)  
LONGITUDE = 108°07'58.44" (108.132900)  
**NAD 27 (TARGET BOTTOM HOLE)**  
LATITUDE = 39°40'38.88" (39.677467)  
LONGITUDE = 108°07'56.15" (108.132265)  
**UTM NAD 27 (ZONE 12)**  
N: 14421502.16 E: 2447378.43

1953 Brass Cap,  
0.8' High, Mound  
of Stones  
Lat: 39.666072°  
Long: 108.135977°

Distances referenced  
on plat to section lines  
are perpendicular.

CERTIFICATE

THIS IS TO CERTIFY THAT THE ABOVE PLANS WERE PREPARED AND  
LOCATION AS SHOWN WAS STAKED ON THE GROUND FROM FIELD NOTES  
OF ACTUAL SURVEYS MADE BY ME OR UNDER MY SUPERVISION AND THAT  
THE SAME ARE TRUE AND CORRECT TO THE BEST OF MY KNOWLEDGE AND  
BELIEF.

REGISTERED LAND SURVEYOR  
REGISTRATION NO. 38130  
STATE OF COLORADO  
08-03-20

## BASIS OF BEARINGS

BEARINGS ARE BASED ON THE ASSUMPTION THAT THE WEST LINE OF THE NORTHWEST 1/4 OF SECTION 26 BEARS N00°02'31"W. MONUMENTS DESCRIBED HEREON

## BASIS OF ELEVATION

BENCH MARK (H79) LOCATED IN THE NE 1/4 OF SECTION 35, T4S, R98W, 6th P.M., TAKEN FROM THE BULL FORK QUADRANGLE, COLORADO, 7.5 MINUTE SERIES, (TOPOGRAPHIC MAP) PUBLISHED BY THE UNITED STATES DEPARTMENT OF THE INTERIOR, GEOLOGICAL SURVEY. SAID ELEVATION IS MARKED AS BEING 8535 FEET.



**UELS, LLC**  
Corporate Office \* 85 South 200 East  
Vernal, UT 84078 \* (435) 789-1017

**Caerus Oil & Gas LLC**

**BJU B26 FED 22B-26 496**  
**NE 1/4 NW 1/4, SECTION 26, T4S, R96W, 6th P.M.**  
**GARFIELD COUNTY, COLORADO**

<b>SURVEYED BY</b>	DAYTON SLAUGH, K.H.	03-09-20	<b>SCALE</b>
<b>DRAWN BY</b>	T.L.L.	08-11-20	1" = 1000'

## WELL LOCATION PLAT