

Project: Garfield County, CO
 Site: BJU B26 496 Pad
 Well: BJU B26 FED 22B-26 496
 Wellbore: Wellbore #1
 Design: Design #1
 Latitude: 39.677557
 Longitude: -108.137763
 Ground Level: 8211.0
 RKB @ 8241.0usft (30')

PROJECT DETAILS: Garfield County, CO
 Geodetic System: Universal Transverse Mercator (US Survey Feet)
 Datum: NAD 1927 - Western US
 Ellipsoid: Clarke 1866
 Zone: Zone 12N (114 W to 108 W)
 System Datum: Mean Sea Level

REFERENCE INFORMATION
 Vertical (TVD) Reference: RKB @ 8241.0usft (30')
 Section (VS) Reference: Slot - BJU B26 FED 22B-26 496(0.0N, 0.0E)
 Measured Depth Reference: RKB @ 8241.0usft (30')
 Calculation Method: Minimum Curvature

FORMATION TOP DETAILS

TVDPath	MDPath	Formation
3458.0	3526.8	Wasatch
5858.0	5986.2	Wasatch G
6158.0	6293.6	Fort Union
8157.0	8335.2	Ohio Creek / TOG
8463.0	8641.3	Williams Fork
11433.0	11612.2	Cameo
11933.0	12112.4	Rollins

SECTION DETAILS

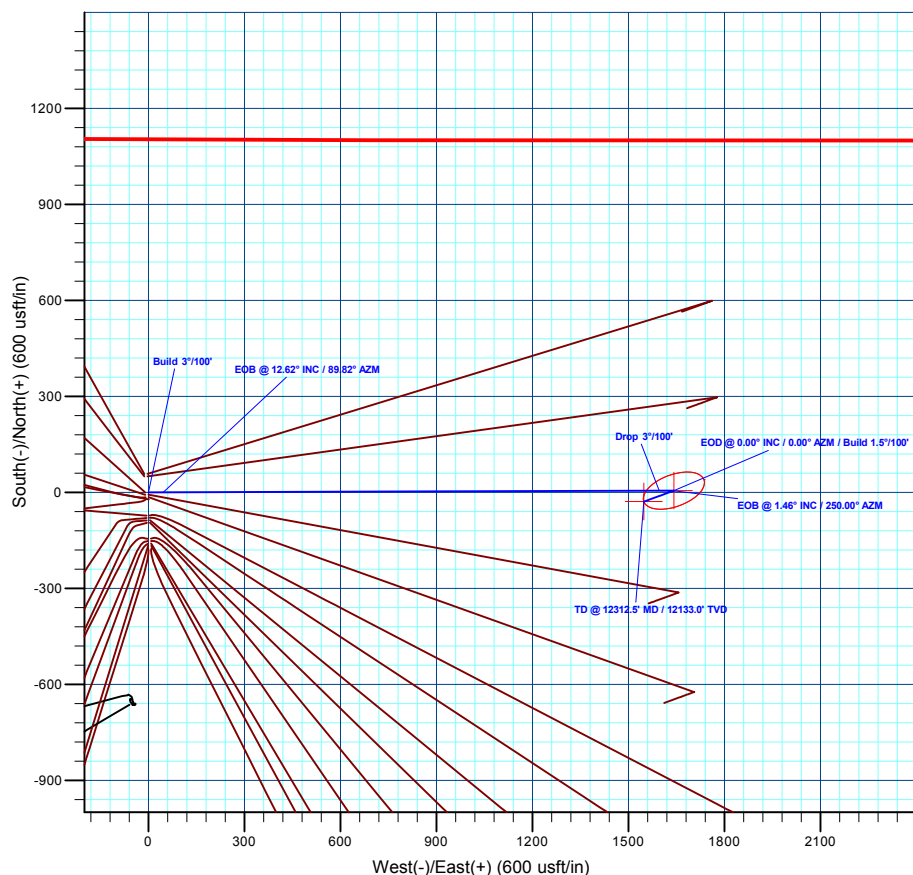
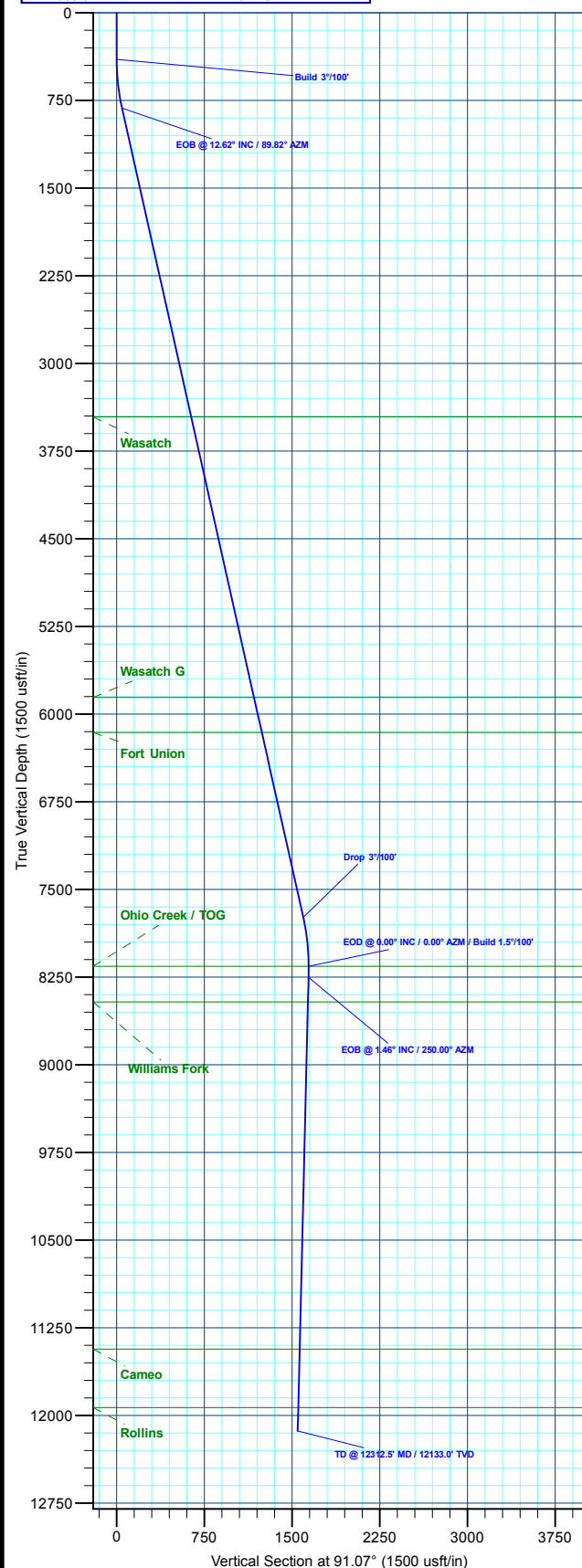
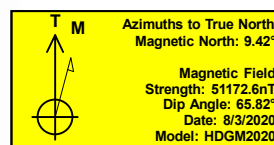
MD	Inc	Azi	TVD	+N/-S	+E/-W	Dleg	TFace	VSect	Annotation
0.0	0.00	0.00	0.0	0.0	0.0	0.00	0.00	0.0	
400.0	0.00	0.00	400.0	0.0	0.0	0.00	0.00	0.0	Build 3°/100'
820.7	12.62	89.82	817.3	0.1	46.2	3.00	89.82	46.1	EOB @ 12.62° INC / 89.82° AZM
7914.5	12.62	89.82	7739.7	5.0	1596.2	0.00	0.00	1595.8	Drop 3°/100'
8335.2	0.00	0.00	8157.0	5.2	1642.3	3.00	180.00	1641.9	EOD @ 0.00° INC / 0.00° AZM / Build 1.5°/100'
8432.4	1.46	250.00	8254.2	4.8	1641.2	1.50	250.00	1640.8	EOB @ 1.46° INC / 250.00° AZM
12312.5	1.46	250.00	12133.0	-29.0	1548.4	0.00	0.00	1548.6	TD @ 12312.5' MD / 12133.0' TVD

DESIGN TARGET DETAILS

Name	TVD	+N/-S	+E/-W	Northing	Easting	Latitude	Longitude
22B-26 - OHCR	8157.0	5.2	1642.3	14421543.09	2447471.33	39.677571	-108.131930
22B-26 - PBHL	12133.0	-29.0	1548.4	14421505.90	2447378.50	39.677477	-108.132264

WELL DETAILS: BJU B26 FED 22B-26 496

+N/-S	+E/-W	Ground Level : 8211.0	Northing	Easting	Latitude	Longitude
0.0	0.0		14421485.50	2445830.00	39.677557	-108.137763



Plan: Design #1 (BJU B26 FED 22B-26 496/Wellbore #1)

Created By: Will Jircik

Date: 12:28, August 06 2020



Caerus Oil & Gas

Garfield County, CO

BJU B26 496 Pad

BJU B26 FED 22B-26 496 - Slot BJU B26 FED 22B-26 496

Wellbore #1

Plan: Design #1

QES Well Planning Report

06 August, 2020



Database:	EDM 5000.1 Single User Db	Local Co-ordinate Reference:	Well BJU B26 FED 22B-26 496 - Slot BJU B26 FED 22B-26 496
Company:	Caerus Oil & Gas	TVD Reference:	RKB @ 8241.0usft (30')
Project:	Garfield County, CO	MD Reference:	RKB @ 8241.0usft (30')
Site:	BJU B26 496 Pad	North Reference:	True
Well:	BJU B26 FED 22B-26 496	Survey Calculation Method:	Minimum Curvature
Wellbore:	Wellbore #1		
Design:	Design #1		

Project	Garfield County, CO		
Map System:	Universal Transverse Mercator (US Survey Fee	System Datum:	Mean Sea Level
Geo Datum:	NAD 1927 - Western US		
Map Zone:	Zone 12N (114 W to 108 W)		

Site		BJU B26 496 Pad			
Site Position:		Northing:	14,421,469.70 usft	Latitude:	39.677515
From:	Map	Easting:	2,445,821.30 usft	Longitude:	-108.137796
Position Uncertainty:	0.0 usft	Slot Radius:	13-3/16 "	Grid Convergence:	1.83 °

Well	BJU B26 FED 22B-26 496 - Slot BJU B26 FED 22B-26 496					
Well Position	+N/-S	15.5 usft	Northing:	14,421,485.50 usft	Latitude:	39.677557
	+E/-W	9.2 usft	Easting:	2,445,830.00 usft	Longitude:	-108.137763
Position Uncertainty		0.0 usft	Wellhead Elevation:		Ground Level:	8,211.0 usft

Wellbore	Wellbore #1				
Magnetics	Model Name	Sample Date	Declination (°)	Dip Angle (°)	Field Strength (nT)
	HDGM2020	8/3/2020	9.42	65.82	51,172.60000000

Design	Design #1				
Audit Notes:					
Version:	Phase:	PLAN	Tie On Depth:	0.0	
Vertical Section:	Depth From (TVD) (usft)	+N/-S (usft)	+E/-W (usft)	Direction (°)	
	0.0	0.0	0.0	91.07	

Plan Sections										
Measured Depth (usft)	Inclination (°)	Azimuth (°)	Vertical Depth (usft)	+N/-S (usft)	+E/-W (usft)	Dogleg Rate (°/100usft)	Build Rate (°/100usft)	Turn Rate (°/100usft)	TFO (°)	Target
0.0	0.00	0.00	0.0	0.0	0.0	0.00	0.00	0.00	0.00	
400.0	0.00	0.00	400.0	0.0	0.0	0.00	0.00	0.00	0.00	
820.7	12.62	89.82	817.3	0.1	46.2	3.00	3.00	0.00	89.82	
7,914.5	12.62	89.82	7,739.7	5.0	1,596.2	0.00	0.00	0.00	0.00	
8,335.2	0.00	0.00	8,157.0	5.2	1,642.3	3.00	-3.00	0.00	180.00	22B-26 - OHCR
8,432.4	1.46	250.00	8,254.2	4.8	1,641.2	1.50	1.50	-113.13	250.00	
12,312.5	1.46	250.00	12,133.0	-29.0	1,548.4	0.00	0.00	0.00	0.00	22B-26 - PBHL

Database:	EDM 5000.1 Single User Db	Local Co-ordinate Reference:	Well BJU B26 FED 22B-26 496 - Slot BJU B26 FED 22B-26 496
Company:	Caerus Oil & Gas	TVD Reference:	RKB @ 8241.0usft (30')
Project:	Garfield County, CO	MD Reference:	RKB @ 8241.0usft (30')
Site:	BJU B26 496 Pad	North Reference:	True
Well:	BJU B26 FED 22B-26 496	Survey Calculation Method:	Minimum Curvature
Wellbore:	Wellbore #1		
Design:	Design #1		

Planned Survey									
Measured Depth (usft)	Inclination (°)	Azimuth (°)	Vertical Depth (usft)	+N/-S (usft)	+E/-W (usft)	Vertical Section (usft)	Dogleg Rate (°/100usft)	Build Rate (°/100usft)	Turn Rate (°/100usft)
0.0	0.00	0.00	0.0	0.0	0.0	0.0	0.00	0.00	0.00
100.0	0.00	0.00	100.0	0.0	0.0	0.0	0.00	0.00	0.00
200.0	0.00	0.00	200.0	0.0	0.0	0.0	0.00	0.00	0.00
300.0	0.00	0.00	300.0	0.0	0.0	0.0	0.00	0.00	0.00
Build 3°/100'									
400.0	0.00	0.00	400.0	0.0	0.0	0.0	0.00	0.00	0.00
500.0	3.00	89.82	500.0	0.0	2.6	2.6	3.00	3.00	0.00
600.0	6.00	89.82	599.6	0.0	10.5	10.5	3.00	3.00	0.00
700.0	9.00	89.82	698.8	0.1	23.5	23.5	3.00	3.00	0.00
800.0	12.00	89.82	797.1	0.1	41.7	41.7	3.00	3.00	0.00
EOB @ 12.62° INC / 89.82° AZM									
820.7	12.62	89.82	817.3	0.1	46.2	46.1	3.00	3.00	0.00
900.0	12.62	89.82	894.7	0.2	63.5	63.5	0.00	0.00	0.00
1,000.0	12.62	89.82	992.3	0.3	85.3	85.3	0.00	0.00	0.00
1,100.0	12.62	89.82	1,089.9	0.3	107.2	107.2	0.00	0.00	0.00
1,200.0	12.62	89.82	1,187.4	0.4	129.0	129.0	0.00	0.00	0.00
1,300.0	12.62	89.82	1,285.0	0.5	150.9	150.8	0.00	0.00	0.00
1,400.0	12.62	89.82	1,382.6	0.5	172.7	172.7	0.00	0.00	0.00
1,500.0	12.62	89.82	1,480.2	0.6	194.6	194.5	0.00	0.00	0.00
1,600.0	12.62	89.82	1,577.8	0.7	216.4	216.4	0.00	0.00	0.00
1,700.0	12.62	89.82	1,675.4	0.8	238.3	238.2	0.00	0.00	0.00
1,800.0	12.62	89.82	1,772.9	0.8	260.1	260.1	0.00	0.00	0.00
1,900.0	12.62	89.82	1,870.5	0.9	282.0	281.9	0.00	0.00	0.00
2,000.0	12.62	89.82	1,968.1	1.0	303.8	303.8	0.00	0.00	0.00
2,100.0	12.62	89.82	2,065.7	1.0	325.7	325.6	0.00	0.00	0.00
2,200.0	12.62	89.82	2,163.3	1.1	347.5	347.5	0.00	0.00	0.00
2,300.0	12.62	89.82	2,260.9	1.2	369.4	369.3	0.00	0.00	0.00
2,400.0	12.62	89.82	2,358.4	1.2	391.2	391.1	0.00	0.00	0.00
2,500.0	12.62	89.82	2,456.0	1.3	413.1	413.0	0.00	0.00	0.00
2,600.0	12.62	89.82	2,553.6	1.4	434.9	434.8	0.00	0.00	0.00
2,700.0	12.62	89.82	2,651.2	1.4	456.8	456.7	0.00	0.00	0.00
2,800.0	12.62	89.82	2,748.8	1.5	478.6	478.5	0.00	0.00	0.00
2,900.0	12.62	89.82	2,846.4	1.6	500.5	500.4	0.00	0.00	0.00
3,000.0	12.62	89.82	2,943.9	1.7	522.3	522.2	0.00	0.00	0.00
3,100.0	12.62	89.82	3,041.5	1.7	544.2	544.1	0.00	0.00	0.00
3,200.0	12.62	89.82	3,139.1	1.8	566.0	565.9	0.00	0.00	0.00
3,300.0	12.62	89.82	3,236.7	1.9	587.9	587.8	0.00	0.00	0.00
3,400.0	12.62	89.82	3,334.3	1.9	609.7	609.6	0.00	0.00	0.00
3,500.0	12.62	89.82	3,431.9	2.0	631.6	631.4	0.00	0.00	0.00
Wasatch									
3,526.8	12.62	89.82	3,458.0	2.0	637.4	637.3	0.00	0.00	0.00
3,600.0	12.62	89.82	3,529.4	2.1	653.4	653.3	0.00	0.00	0.00
3,700.0	12.62	89.82	3,627.0	2.1	675.3	675.1	0.00	0.00	0.00
3,800.0	12.62	89.82	3,724.6	2.2	697.1	697.0	0.00	0.00	0.00
3,900.0	12.62	89.82	3,822.2	2.3	719.0	718.8	0.00	0.00	0.00
4,000.0	12.62	89.82	3,919.8	2.3	740.8	740.7	0.00	0.00	0.00
4,100.0	12.62	89.82	4,017.4	2.4	762.7	762.5	0.00	0.00	0.00
4,200.0	12.62	89.82	4,114.9	2.5	784.5	784.4	0.00	0.00	0.00
4,300.0	12.62	89.82	4,212.5	2.5	806.4	806.2	0.00	0.00	0.00
4,400.0	12.62	89.82	4,310.1	2.6	828.2	828.0	0.00	0.00	0.00
4,500.0	12.62	89.82	4,407.7	2.7	850.1	849.9	0.00	0.00	0.00
4,600.0	12.62	89.82	4,505.3	2.8	871.9	871.7	0.00	0.00	0.00
4,700.0	12.62	89.82	4,602.9	2.8	893.8	893.6	0.00	0.00	0.00

Database:	EDM 5000.1 Single User Db	Local Co-ordinate Reference:	Well BJU B26 FED 22B-26 496 - Slot BJU B26 FED 22B-26 496
Company:	Caerus Oil & Gas	TVD Reference:	RKB @ 8241.0usft (30')
Project:	Garfield County, CO	MD Reference:	RKB @ 8241.0usft (30')
Site:	BJU B26 496 Pad	North Reference:	True
Well:	BJU B26 FED 22B-26 496	Survey Calculation Method:	Minimum Curvature
Wellbore:	Wellbore #1		
Design:	Design #1		

Planned Survey									
Measured Depth (usft)	Inclination (°)	Azimuth (°)	Vertical Depth (usft)	+N/-S (usft)	+E/-W (usft)	Vertical Section (usft)	Dogleg Rate (°/100usft)	Build Rate (°/100usft)	Turn Rate (°/100usft)
4,800.0	12.62	89.82	4,700.4	2.9	915.6	915.4	0.00	0.00	0.00
4,900.0	12.62	89.82	4,798.0	3.0	937.5	937.3	0.00	0.00	0.00
5,000.0	12.62	89.82	4,895.6	3.0	959.3	959.1	0.00	0.00	0.00
5,100.0	12.62	89.82	4,993.2	3.1	981.2	981.0	0.00	0.00	0.00
5,200.0	12.62	89.82	5,090.8	3.2	1,003.0	1,002.8	0.00	0.00	0.00
5,300.0	12.62	89.82	5,188.4	3.2	1,024.9	1,024.7	0.00	0.00	0.00
5,400.0	12.62	89.82	5,285.9	3.3	1,046.7	1,046.5	0.00	0.00	0.00
5,500.0	12.62	89.82	5,383.5	3.4	1,068.6	1,068.3	0.00	0.00	0.00
5,600.0	12.62	89.82	5,481.1	3.4	1,090.5	1,090.2	0.00	0.00	0.00
5,700.0	12.62	89.82	5,578.7	3.5	1,112.3	1,112.0	0.00	0.00	0.00
5,800.0	12.62	89.82	5,676.3	3.6	1,134.2	1,133.9	0.00	0.00	0.00
5,900.0	12.62	89.82	5,773.9	3.7	1,156.0	1,155.7	0.00	0.00	0.00
Wasatch G									
5,986.2	12.62	89.82	5,858.0	3.7	1,174.8	1,174.6	0.00	0.00	0.00
6,000.0	12.62	89.82	5,871.5	3.7	1,177.9	1,177.6	0.00	0.00	0.00
6,100.0	12.62	89.82	5,969.0	3.8	1,199.7	1,199.4	0.00	0.00	0.00
6,200.0	12.62	89.82	6,066.6	3.9	1,221.6	1,221.3	0.00	0.00	0.00
Fort Union									
6,293.6	12.62	89.82	6,158.0	3.9	1,242.0	1,241.7	0.00	0.00	0.00
6,300.0	12.62	89.82	6,164.2	3.9	1,243.4	1,243.1	0.00	0.00	0.00
6,400.0	12.62	89.82	6,261.8	4.0	1,265.3	1,265.0	0.00	0.00	0.00
6,500.0	12.62	89.82	6,359.4	4.1	1,287.1	1,286.8	0.00	0.00	0.00
6,600.0	12.62	89.82	6,457.0	4.1	1,309.0	1,308.6	0.00	0.00	0.00
6,700.0	12.62	89.82	6,554.5	4.2	1,330.8	1,330.5	0.00	0.00	0.00
6,800.0	12.62	89.82	6,652.1	4.3	1,352.7	1,352.3	0.00	0.00	0.00
6,900.0	12.62	89.82	6,749.7	4.3	1,374.5	1,374.2	0.00	0.00	0.00
7,000.0	12.62	89.82	6,847.3	4.4	1,396.4	1,396.0	0.00	0.00	0.00
7,100.0	12.62	89.82	6,944.9	4.5	1,418.2	1,417.9	0.00	0.00	0.00
7,200.0	12.62	89.82	7,042.5	4.6	1,440.1	1,439.7	0.00	0.00	0.00
7,300.0	12.62	89.82	7,140.0	4.6	1,461.9	1,461.6	0.00	0.00	0.00
7,400.0	12.62	89.82	7,237.6	4.7	1,483.8	1,483.4	0.00	0.00	0.00
7,500.0	12.62	89.82	7,335.2	4.8	1,505.6	1,505.3	0.00	0.00	0.00
7,600.0	12.62	89.82	7,432.8	4.8	1,527.5	1,527.1	0.00	0.00	0.00
7,700.0	12.62	89.82	7,530.4	4.9	1,549.3	1,548.9	0.00	0.00	0.00
7,800.0	12.62	89.82	7,628.0	5.0	1,571.2	1,570.8	0.00	0.00	0.00
7,900.0	12.62	89.82	7,725.5	5.0	1,593.0	1,592.6	0.00	0.00	0.00
Drop 3°/100'									
7,914.5	12.62	89.82	7,739.7	5.0	1,596.2	1,595.8	0.00	0.00	0.00
8,000.0	10.06	89.82	7,823.5	5.1	1,613.0	1,612.6	3.00	-3.00	0.00
8,100.0	7.06	89.82	7,922.4	5.1	1,627.9	1,627.5	3.00	-3.00	0.00
8,200.0	4.06	89.82	8,021.9	5.2	1,637.5	1,637.2	3.00	-3.00	0.00
8,300.0	1.06	89.82	8,121.8	5.2	1,642.0	1,641.6	3.00	-3.00	0.00
EOD @ 0.00° INC / 0.00° AZM / Build 1.5°/100' - Ohio Creek / TOG									
8,335.2	0.00	0.00	8,157.0	5.2	1,642.3	1,641.9	3.00	-3.00	0.00
8,400.0	0.97	250.00	8,221.8	5.0	1,641.8	1,641.4	1.50	1.50	0.00
EOB @ 1.46° INC / 250.00° AZM									
8,432.4	1.46	250.00	8,254.2	4.8	1,641.2	1,640.8	1.50	1.50	0.00
8,500.0	1.46	250.00	8,321.8	4.2	1,639.6	1,639.2	0.00	0.00	0.00
8,600.0	1.46	250.00	8,421.7	3.3	1,637.2	1,636.8	0.00	0.00	0.00
Williams Fork									
8,641.3	1.46	250.00	8,463.0	2.9	1,636.2	1,635.8	0.00	0.00	0.00
8,700.0	1.46	250.00	8,521.7	2.4	1,634.8	1,634.4	0.00	0.00	0.00

Database:	EDM 5000.1 Single User Db	Local Co-ordinate Reference:	Well BJU B26 FED 22B-26 496 - Slot BJU B26 FED 22B-26 496
Company:	Caerus Oil & Gas	TVD Reference:	RKB @ 8241.0usft (30')
Project:	Garfield County, CO	MD Reference:	RKB @ 8241.0usft (30')
Site:	BJU B26 496 Pad	North Reference:	True
Well:	BJU B26 FED 22B-26 496	Survey Calculation Method:	Minimum Curvature
Wellbore:	Wellbore #1		
Design:	Design #1		

Planned Survey									
Measured Depth (usft)	Inclination (°)	Azimuth (°)	Vertical Depth (usft)	+N/-S (usft)	+E/-W (usft)	Vertical Section (usft)	Dogleg Rate (°/100usft)	Build Rate (°/100usft)	Turn Rate (°/100usft)
8,800.0	1.46	250.00	8,621.7	1.6	1,632.4	1,632.1	0.00	0.00	0.00
8,900.0	1.46	250.00	8,721.6	0.7	1,630.0	1,629.7	0.00	0.00	0.00
9,000.0	1.46	250.00	8,821.6	-0.2	1,627.6	1,627.3	0.00	0.00	0.00
9,100.0	1.46	250.00	8,921.6	-1.0	1,625.2	1,624.9	0.00	0.00	0.00
9,200.0	1.46	250.00	9,021.5	-1.9	1,622.8	1,622.6	0.00	0.00	0.00
9,300.0	1.46	250.00	9,121.5	-2.8	1,620.4	1,620.2	0.00	0.00	0.00
9,400.0	1.46	250.00	9,221.5	-3.7	1,618.0	1,617.8	0.00	0.00	0.00
9,500.0	1.46	250.00	9,321.4	-4.5	1,615.6	1,615.4	0.00	0.00	0.00
9,600.0	1.46	250.00	9,421.4	-5.4	1,613.2	1,613.1	0.00	0.00	0.00
9,700.0	1.46	250.00	9,521.4	-6.3	1,610.8	1,610.7	0.00	0.00	0.00
9,800.0	1.46	250.00	9,621.3	-7.1	1,608.5	1,608.3	0.00	0.00	0.00
9,900.0	1.46	250.00	9,721.3	-8.0	1,606.1	1,605.9	0.00	0.00	0.00
10,000.0	1.46	250.00	9,821.3	-8.9	1,603.7	1,603.6	0.00	0.00	0.00
10,100.0	1.46	250.00	9,921.2	-9.8	1,601.3	1,601.2	0.00	0.00	0.00
10,200.0	1.46	250.00	10,021.2	-10.6	1,598.9	1,598.8	0.00	0.00	0.00
10,300.0	1.46	250.00	10,121.2	-11.5	1,596.5	1,596.4	0.00	0.00	0.00
10,400.0	1.46	250.00	10,221.1	-12.4	1,594.1	1,594.1	0.00	0.00	0.00
10,500.0	1.46	250.00	10,321.1	-13.2	1,591.7	1,591.7	0.00	0.00	0.00
10,600.0	1.46	250.00	10,421.1	-14.1	1,589.3	1,589.3	0.00	0.00	0.00
10,700.0	1.46	250.00	10,521.0	-15.0	1,586.9	1,586.9	0.00	0.00	0.00
10,800.0	1.46	250.00	10,621.0	-15.8	1,584.5	1,584.6	0.00	0.00	0.00
10,900.0	1.46	250.00	10,721.0	-16.7	1,582.1	1,582.2	0.00	0.00	0.00
11,000.0	1.46	250.00	10,821.0	-17.6	1,579.8	1,579.8	0.00	0.00	0.00
11,100.0	1.46	250.00	10,920.9	-18.5	1,577.4	1,577.4	0.00	0.00	0.00
11,200.0	1.46	250.00	11,020.9	-19.3	1,575.0	1,575.1	0.00	0.00	0.00
11,300.0	1.46	250.00	11,120.9	-20.2	1,572.6	1,572.7	0.00	0.00	0.00
11,400.0	1.46	250.00	11,220.8	-21.1	1,570.2	1,570.3	0.00	0.00	0.00
11,500.0	1.46	250.00	11,320.8	-21.9	1,567.8	1,567.9	0.00	0.00	0.00
11,600.0	1.46	250.00	11,420.8	-22.8	1,565.4	1,565.6	0.00	0.00	0.00
Cameo									
11,612.2	1.46	250.00	11,433.0	-22.9	1,565.1	1,565.3	0.00	0.00	0.00
11,700.0	1.46	250.00	11,520.7	-23.7	1,563.0	1,563.2	0.00	0.00	0.00
11,800.0	1.46	250.00	11,620.7	-24.6	1,560.6	1,560.8	0.00	0.00	0.00
11,900.0	1.46	250.00	11,720.7	-25.4	1,558.2	1,558.4	0.00	0.00	0.00
12,000.0	1.46	250.00	11,820.6	-26.3	1,555.8	1,556.1	0.00	0.00	0.00
12,100.0	1.46	250.00	11,920.6	-27.2	1,553.4	1,553.7	0.00	0.00	0.00
Rollins									
12,112.4	1.46	250.00	11,933.0	-27.3	1,553.1	1,553.4	0.00	0.00	0.00
12,200.0	1.46	250.00	12,020.6	-28.0	1,551.1	1,551.3	0.00	0.00	0.00
12,300.0	1.46	250.00	12,120.5	-28.9	1,548.7	1,548.9	0.00	0.00	0.00
TD @ 12312.5' MD / 12133.0' TVD									
12,312.5	1.46	250.00	12,133.0	-29.0	1,548.4	1,548.6	0.00	0.00	0.00

Database:	EDM 5000.1 Single User Db	Local Co-ordinate Reference:	Well BJU B26 FED 22B-26 496 - Slot BJU B26 FED 22B-26 496
Company:	Caerus Oil & Gas	TVD Reference:	RKB @ 8241.0usft (30')
Project:	Garfield County, CO	MD Reference:	RKB @ 8241.0usft (30')
Site:	BJU B26 496 Pad	North Reference:	True
Well:	BJU B26 FED 22B-26 496	Survey Calculation Method:	Minimum Curvature
Wellbore:	Wellbore #1		
Design:	Design #1		

Design Targets

Target Name

- hit/miss target - Shape	Dip Angle (°)	Dip Dir. (°)	TVD (usft)	+N/-S (usft)	+E/-W (usft)	Northing (usft)	Easting (usft)	Latitude	Longitude
22B-26 - OHCR - plan hits target center - Ellipse (radii L100.0 W50.0 on 250.00 azi)	0.00	0.00	8,157.0	5.2	1,642.3	14,421,543.09	2,447,471.33	39.677571	-108.131930
22B-26 - PBHL - plan hits target center - Point	0.00	0.00	12,133.0	-29.0	1,548.4	14,421,505.90	2,447,378.50	39.677478	-108.132264

Formations

Measured Depth (usft)	Vertical Depth (usft)	Name	Lithology	Dip (°)	Dip Direction (°)
3,526.8	3,458.0	Wasatch			
5,986.2	5,858.0	Wasatch G			
6,293.6	6,158.0	Fort Union			
8,335.2	8,157.0	Ohio Creek / TOG			
8,641.3	8,463.0	Williams Fork			
11,612.2	11,433.0	Cameo			
12,112.4	11,933.0	Rollins			

Plan Annotations

Measured Depth (usft)	Vertical Depth (usft)	Local Coordinates		Comment
		+N/-S (usft)	+E/-W (usft)	
400.0	400.0	0.0	0.0	Build 3°/100'
820.7	817.3	0.1	46.2	EOB @ 12.62° INC / 89.82° AZM
7,914.5	7,739.7	5.0	1,596.2	Drop 3°/100'
8,335.2	8,157.0	5.2	1,642.3	EOD @ 0.00° INC / 0.00° AZM / Build 1.5°/100'
8,432.4	8,254.2	4.8	1,641.2	EOB @ 1.46° INC / 250.00° AZM
12,312.5	12,133.0	-29.0	1,548.4	TD @ 12312.5' MD / 12133.0' TVD