

Project: Garfield County, CO
 Site: BJU B26 496 Pad
 Well: BJU B26 FED 21D-26 496
 Wellbore: Wellbore #1
 Design: Design #1
 Latitude: 39.677715
 Longitude: -108.137774
 Ground Level: 8211.0
 RKB @ 8241.0usft (30')

PROJECT DETAILS: Garfield County, CO

Geodetic System: Universal Transverse Mercator (US Survey Feet)
 Datum: NAD 1927 - Western US
 Ellipsoid: Clarke 1866
 Zone: Zone 12N (114 W to 108 W)
 System Datum: Mean Sea Level

REFERENCE INFORMATION

Vertical (TVD) Reference: RKB @ 8241.0usft (30')
 Section (VS) Reference: Slot - BJU B26 FED 21D-26 496(0.0N, 0.0E)
 Measured Depth Reference: RKB @ 8241.0usft (30')
 Calculation Method: Minimum Curvature

SECTION DETAILS

MD	Inc	Azi	TVD	+N/-S	+E/-W	Dleg	TFace	VSect	Annotation
0.0	0.00	0.00	0.0	0.0	0.0	0.00	0.00	0.0	
200.0	0.00	0.00	200.0	0.0	0.0	0.00	0.00	0.0	Build 3°/100'
659.6	13.79	72.95	655.2	16.1	52.6	3.00	72.95	55.0	EOB @ 13.79° INC / 72.95° AZM
7943.1	13.79	72.95	7728.8	525.0	1712.2	0.00	0.00	1790.9	Drop 3°/100'
8402.7	0.00	0.00	8184.0	541.2	1764.8	3.00	180.00	1845.9	EOB @ 0.00° INC / 0.00° AZM / Build 1.5°/100'
8499.6	1.45	250.00	8280.9	540.7	1763.6	1.50	250.00	1844.7	EOB @ 1.45° INC / 250.00° AZM
12395.0	1.45	250.00	12175.0	506.9	1670.8	0.00	0.00	1746.0	TD @ 12395.0' MD / 12175.0' TVD

FORMATION TOP DETAILS

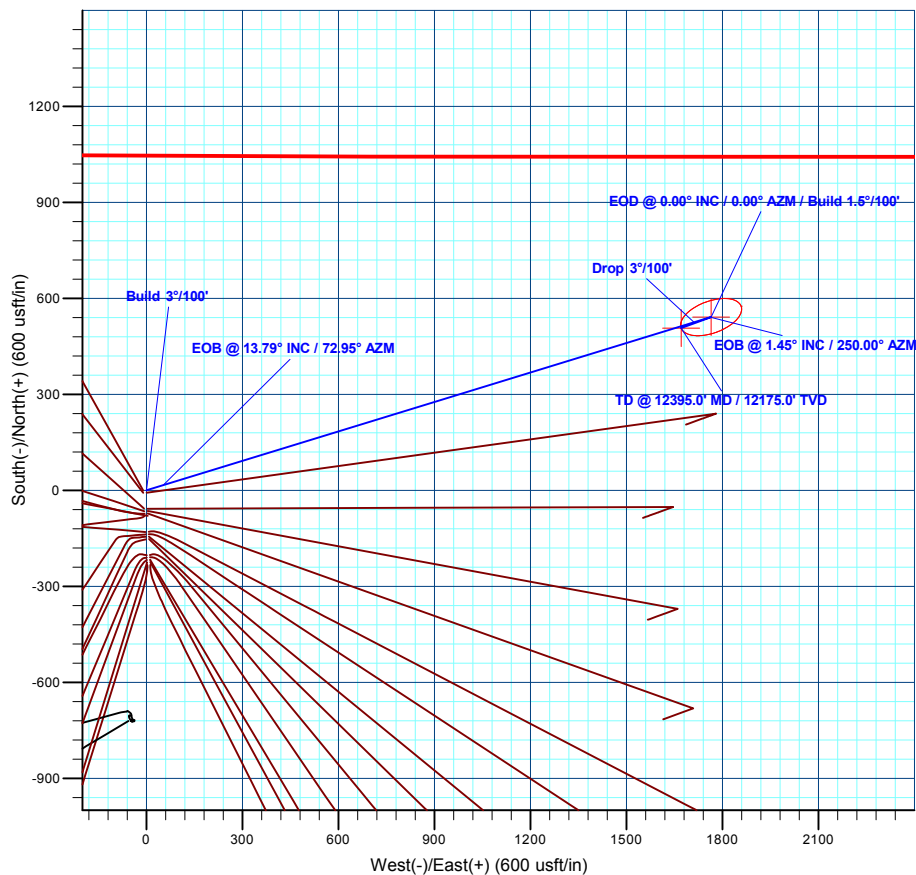
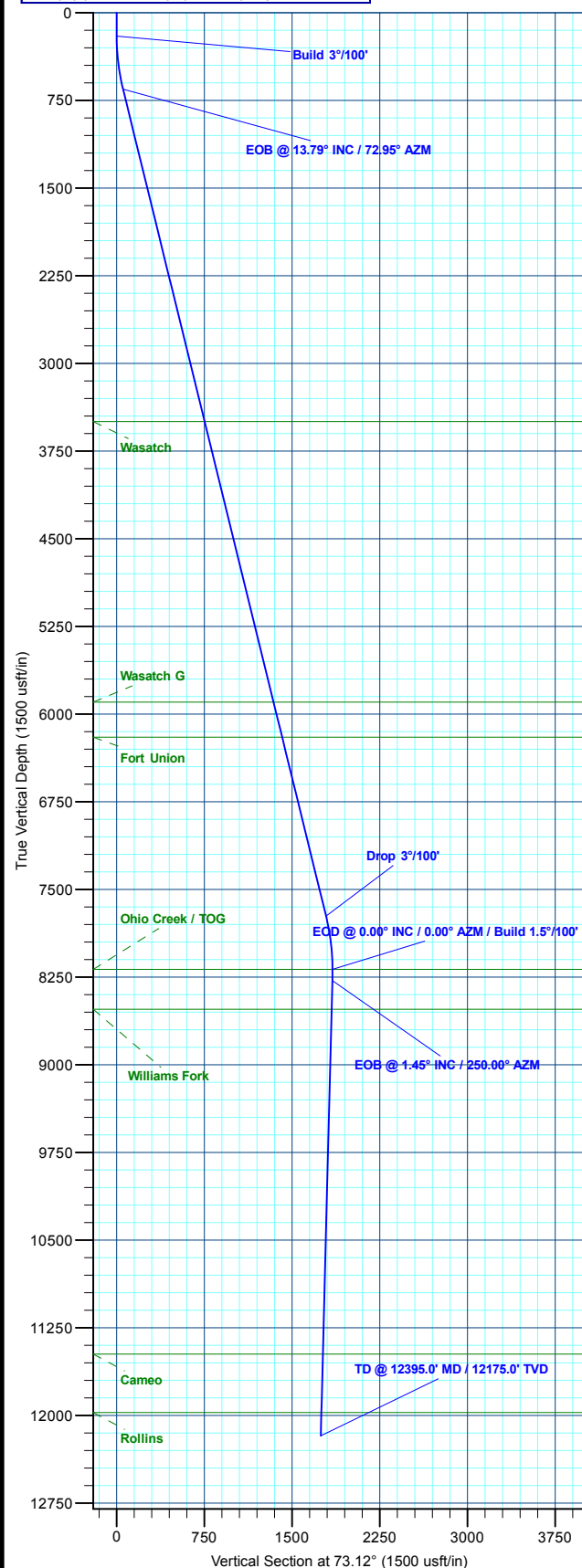
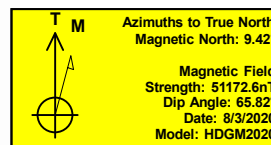
TVDPath	MDPath	Formation
3499.0	3587.8	Wasatch
5899.0	6059.0	Wasatch G
6199.0	6367.9	Fort Union
8184.0	8402.7	Ohio Creek / TOG
8525.0	8743.8	Williams Fork
11475.0	11694.8	Cameo
11975.0	12194.9	Rollins

DESIGN TARGET DETAILS

Name	TVD	+N/-S	+E/-W	Northing	Easting	Latitude	Longitude
21D-26 - OHCR	8184.0	541.2	1764.8	14422139.99	2447571.63	39.679200	-108.131506
21D-26 - PBHL	12175.0	506.9	1670.8	14422102.80	2447478.80	39.679106	-108.131840

WELL DETAILS: BJU B26 FED 21D-26 496

+N/-S	+E/-W	Ground Level	Easting	Latitude	Longitude
0.0	0.0	8211.0	2445825.00	39.677715	-108.137774



Plan: Design #1 (BJU B26 FED 21D-26 496/Wellbore #1)

Created By: Will Jircik

Date: 12:32, August 06 2020



Caerus Oil & Gas

Garfield County, CO

BJU B26 496 Pad

BJU B26 FED 21D-26 496 - Slot BJU B26 FED 21D-26 496

Wellbore #1

Plan: Design #1

QES Well Planning Report

06 August, 2020



Database:	EDM 5000.1 Single User Db	Local Co-ordinate Reference:	Well BJU B26 FED 21D-26 496 - Slot BJU B26 FED 21D-26 496
Company:	Caerus Oil & Gas	TVD Reference:	RKB @ 8241.0usft (30')
Project:	Garfield County, CO	MD Reference:	RKB @ 8241.0usft (30')
Site:	BJU B26 496 Pad	North Reference:	True
Well:	BJU B26 FED 21D-26 496	Survey Calculation Method:	Minimum Curvature
Wellbore:	Wellbore #1		
Design:	Design #1		

Project	Garfield County, CO		
Map System:	Universal Transverse Mercator (US Survey Fee	System Datum:	Mean Sea Level
Geo Datum:	NAD 1927 - Western US		
Map Zone:	Zone 12N (114 W to 108 W)		

Site		BJU B26 496 Pad				
Site Position:		Northing:	14,421,469.70 usft	Latitude:	39.677515	
From:	Map	Easting:	2,445,821.30 usft	Longitude:	-108.137796	
Position Uncertainty:		0.0 usft	Slot Radius:	13-3/16 "	Grid Convergence:	1.83 °

Well	BJU B26 FED 21D-26 496 - Slot BJU B26 FED 21D-26 496					
Well Position	+N/-S	72.9 usft	Northing:	14,421,542.80 usft	Latitude:	39.677715
	+E/-W	6.0 usft	Easting:	2,445,825.00 usft	Longitude:	-108.137774
Position Uncertainty		0.0 usft	Wellhead Elevation:		Ground Level:	8,211.0 usft

Wellbore	Wellbore #1				
Magnetics	Model Name	Sample Date	Declination (°)	Dip Angle (°)	Field Strength (nT)
	HDGM2020	8/3/2020	9.42	65.82	51,172.60000000

Design	Design #1				
Audit Notes:					
Version:	Phase:	PLAN	Tie On Depth:	0.0	
Vertical Section:	Depth From (TVD) (usft)	+N/-S (usft)	+E/-W (usft)	Direction (°)	
	0.0	0.0	0.0	73.12	

Plan Sections										
Measured Depth (usft)	Inclination (°)	Azimuth (°)	Vertical Depth (usft)	+N/-S (usft)	+E/-W (usft)	Dogleg Rate (°/100usft)	Build Rate (°/100usft)	Turn Rate (°/100usft)	TFO (°)	Target
0.0	0.00	0.00	0.0	0.0	0.0	0.00	0.00	0.00	0.00	
200.0	0.00	0.00	200.0	0.0	0.0	0.00	0.00	0.00	0.00	
659.6	13.79	72.95	655.2	16.1	52.6	3.00	3.00	0.00	72.95	
7,943.1	13.79	72.95	7,728.8	525.0	1,712.2	0.00	0.00	0.00	0.00	
8,402.7	0.00	0.00	8,184.0	541.2	1,764.8	3.00	-3.00	0.00	180.00	21D-26 - OHCR
8,499.6	1.45	250.00	8,280.9	540.7	1,763.6	1.50	1.50	-113.56	250.00	
12,395.0	1.45	250.00	12,175.0	506.9	1,670.8	0.00	0.00	0.00	0.00	21D-26 - PBHL

Database:	EDM 5000.1 Single User Db	Local Co-ordinate Reference:	Well BJU B26 FED 21D-26 496 - Slot BJU B26 FED 21D-26 496
Company:	Caerus Oil & Gas	TVD Reference:	RKB @ 8241.0usft (30')
Project:	Garfield County, CO	MD Reference:	RKB @ 8241.0usft (30')
Site:	BJU B26 496 Pad	North Reference:	True
Well:	BJU B26 FED 21D-26 496	Survey Calculation Method:	Minimum Curvature
Wellbore:	Wellbore #1		
Design:	Design #1		

Planned Survey									
Measured Depth (usft)	Inclination (°)	Azimuth (°)	Vertical Depth (usft)	+N/-S (usft)	+E/-W (usft)	Vertical Section (usft)	Dogleg Rate (°/100usft)	Build Rate (°/100usft)	Turn Rate (°/100usft)
0.0	0.00	0.00	0.0	0.0	0.0	0.0	0.00	0.00	0.00
100.0	0.00	0.00	100.0	0.0	0.0	0.0	0.00	0.00	0.00
Build 3°/100'									
200.0	0.00	0.00	200.0	0.0	0.0	0.0	0.00	0.00	0.00
300.0	3.00	72.95	300.0	0.8	2.5	2.6	3.00	3.00	0.00
400.0	6.00	72.95	399.6	3.1	10.0	10.5	3.00	3.00	0.00
500.0	9.00	72.95	498.8	6.9	22.5	23.5	3.00	3.00	0.00
600.0	12.00	72.95	597.1	12.2	39.9	41.7	3.00	3.00	0.00
EOB @ 13.79° INC / 72.95° AZM									
659.6	13.79	72.95	655.2	16.1	52.6	55.0	3.00	3.00	0.00
700.0	13.79	72.95	694.4	19.0	61.8	64.7	0.00	0.00	0.00
800.0	13.79	72.95	791.5	25.9	84.6	88.5	0.00	0.00	0.00
900.0	13.79	72.95	888.6	32.9	107.4	112.3	0.00	0.00	0.00
1,000.0	13.79	72.95	985.8	39.9	130.2	136.2	0.00	0.00	0.00
1,100.0	13.79	72.95	1,082.9	46.9	153.0	160.0	0.00	0.00	0.00
1,200.0	13.79	72.95	1,180.0	53.9	175.7	183.8	0.00	0.00	0.00
1,300.0	13.79	72.95	1,277.1	60.9	198.5	207.7	0.00	0.00	0.00
1,400.0	13.79	72.95	1,374.2	67.9	221.3	231.5	0.00	0.00	0.00
1,500.0	13.79	72.95	1,471.4	74.9	244.1	255.3	0.00	0.00	0.00
1,600.0	13.79	72.95	1,568.5	81.8	266.9	279.2	0.00	0.00	0.00
1,700.0	13.79	72.95	1,665.6	88.8	289.7	303.0	0.00	0.00	0.00
1,800.0	13.79	72.95	1,762.7	95.8	312.5	326.8	0.00	0.00	0.00
1,900.0	13.79	72.95	1,859.8	102.8	335.2	350.6	0.00	0.00	0.00
2,000.0	13.79	72.95	1,957.0	109.8	358.0	374.5	0.00	0.00	0.00
2,100.0	13.79	72.95	2,054.1	116.8	380.8	398.3	0.00	0.00	0.00
2,200.0	13.79	72.95	2,151.2	123.8	403.6	422.1	0.00	0.00	0.00
2,300.0	13.79	72.95	2,248.3	130.7	426.4	446.0	0.00	0.00	0.00
2,400.0	13.79	72.95	2,345.4	137.7	449.2	469.8	0.00	0.00	0.00
2,500.0	13.79	72.95	2,442.5	144.7	472.0	493.6	0.00	0.00	0.00
2,600.0	13.79	72.95	2,539.7	151.7	494.7	517.5	0.00	0.00	0.00
2,700.0	13.79	72.95	2,636.8	158.7	517.5	541.3	0.00	0.00	0.00
2,800.0	13.79	72.95	2,733.9	165.7	540.3	565.1	0.00	0.00	0.00
2,900.0	13.79	72.95	2,831.0	172.7	563.1	589.0	0.00	0.00	0.00
3,000.0	13.79	72.95	2,928.1	179.7	585.9	612.8	0.00	0.00	0.00
3,100.0	13.79	72.95	3,025.3	186.6	608.7	636.6	0.00	0.00	0.00
3,200.0	13.79	72.95	3,122.4	193.6	631.5	660.5	0.00	0.00	0.00
3,300.0	13.79	72.95	3,219.5	200.6	654.2	684.3	0.00	0.00	0.00
3,400.0	13.79	72.95	3,316.6	207.6	677.0	708.1	0.00	0.00	0.00
3,500.0	13.79	72.95	3,413.7	214.6	699.8	732.0	0.00	0.00	0.00
Wasatch									
3,587.8	13.79	72.95	3,499.0	220.7	719.8	752.9	0.00	0.00	0.00
3,600.0	13.79	72.95	3,510.9	221.6	722.6	755.8	0.00	0.00	0.00
3,700.0	13.79	72.95	3,608.0	228.6	745.4	779.6	0.00	0.00	0.00
3,800.0	13.79	72.95	3,705.1	235.5	768.2	803.5	0.00	0.00	0.00
3,900.0	13.79	72.95	3,802.2	242.5	790.9	827.3	0.00	0.00	0.00
4,000.0	13.79	72.95	3,899.3	249.5	813.7	851.1	0.00	0.00	0.00
4,100.0	13.79	72.95	3,996.4	256.5	836.5	875.0	0.00	0.00	0.00
4,200.0	13.79	72.95	4,093.6	263.5	859.3	898.8	0.00	0.00	0.00
4,300.0	13.79	72.95	4,190.7	270.5	882.1	922.6	0.00	0.00	0.00
4,400.0	13.79	72.95	4,287.8	277.5	904.9	946.5	0.00	0.00	0.00
4,500.0	13.79	72.95	4,384.9	284.5	927.7	970.3	0.00	0.00	0.00
4,600.0	13.79	72.95	4,482.0	291.4	950.4	994.1	0.00	0.00	0.00
4,700.0	13.79	72.95	4,579.2	298.4	973.2	1,018.0	0.00	0.00	0.00

Database:	EDM 5000.1 Single User Db	Local Co-ordinate Reference:	Well BJU B26 FED 21D-26 496 - Slot BJU B26 FED 21D-26 496
Company:	Caerus Oil & Gas	TVD Reference:	RKB @ 8241.0usft (30')
Project:	Garfield County, CO	MD Reference:	RKB @ 8241.0usft (30')
Site:	BJU B26 496 Pad	North Reference:	True
Well:	BJU B26 FED 21D-26 496	Survey Calculation Method:	Minimum Curvature
Wellbore:	Wellbore #1		
Design:	Design #1		

Planned Survey									
Measured Depth (usft)	Inclination (°)	Azimuth (°)	Vertical Depth (usft)	+N/-S (usft)	+E/-W (usft)	Vertical Section (usft)	Dogleg Rate (°/100usft)	Build Rate (°/100usft)	Turn Rate (°/100usft)
4,800.0	13.79	72.95	4,676.3	305.4	996.0	1,041.8	0.00	0.00	0.00
4,900.0	13.79	72.95	4,773.4	312.4	1,018.8	1,065.6	0.00	0.00	0.00
5,000.0	13.79	72.95	4,870.5	319.4	1,041.6	1,089.4	0.00	0.00	0.00
5,100.0	13.79	72.95	4,967.6	326.4	1,064.4	1,113.3	0.00	0.00	0.00
5,200.0	13.79	72.95	5,064.7	333.4	1,087.2	1,137.1	0.00	0.00	0.00
5,300.0	13.79	72.95	5,161.9	340.4	1,109.9	1,160.9	0.00	0.00	0.00
5,400.0	13.79	72.95	5,259.0	347.3	1,132.7	1,184.8	0.00	0.00	0.00
5,500.0	13.79	72.95	5,356.1	354.3	1,155.5	1,208.6	0.00	0.00	0.00
5,600.0	13.79	72.95	5,453.2	361.3	1,178.3	1,232.4	0.00	0.00	0.00
5,700.0	13.79	72.95	5,550.3	368.3	1,201.1	1,256.3	0.00	0.00	0.00
5,800.0	13.79	72.95	5,647.5	375.3	1,223.9	1,280.1	0.00	0.00	0.00
5,900.0	13.79	72.95	5,744.6	382.3	1,246.7	1,303.9	0.00	0.00	0.00
6,000.0	13.79	72.95	5,841.7	389.3	1,269.4	1,327.8	0.00	0.00	0.00
Wasatch G									
6,059.0	13.79	72.95	5,899.0	393.4	1,282.9	1,341.8	0.00	0.00	0.00
6,100.0	13.79	72.95	5,938.8	396.2	1,292.2	1,351.6	0.00	0.00	0.00
6,200.0	13.79	72.95	6,035.9	403.2	1,315.0	1,375.4	0.00	0.00	0.00
6,300.0	13.79	72.95	6,133.1	410.2	1,337.8	1,399.3	0.00	0.00	0.00
Fort Union									
6,367.9	13.79	72.95	6,199.0	415.0	1,353.3	1,415.5	0.00	0.00	0.00
6,400.0	13.79	72.95	6,230.2	417.2	1,360.6	1,423.1	0.00	0.00	0.00
6,500.0	13.79	72.95	6,327.3	424.2	1,383.4	1,446.9	0.00	0.00	0.00
6,600.0	13.79	72.95	6,424.4	431.2	1,406.1	1,470.8	0.00	0.00	0.00
6,700.0	13.79	72.95	6,521.5	438.2	1,428.9	1,494.6	0.00	0.00	0.00
6,800.0	13.79	72.95	6,618.6	445.2	1,451.7	1,518.4	0.00	0.00	0.00
6,900.0	13.79	72.95	6,715.8	452.1	1,474.5	1,542.3	0.00	0.00	0.00
7,000.0	13.79	72.95	6,812.9	459.1	1,497.3	1,566.1	0.00	0.00	0.00
7,100.0	13.79	72.95	6,910.0	466.1	1,520.1	1,589.9	0.00	0.00	0.00
7,200.0	13.79	72.95	7,007.1	473.1	1,542.9	1,613.8	0.00	0.00	0.00
7,300.0	13.79	72.95	7,104.2	480.1	1,565.6	1,637.6	0.00	0.00	0.00
7,400.0	13.79	72.95	7,201.4	487.1	1,588.4	1,661.4	0.00	0.00	0.00
7,500.0	13.79	72.95	7,298.5	494.1	1,611.2	1,685.3	0.00	0.00	0.00
7,600.0	13.79	72.95	7,395.6	501.0	1,634.0	1,709.1	0.00	0.00	0.00
7,700.0	13.79	72.95	7,492.7	508.0	1,656.8	1,732.9	0.00	0.00	0.00
7,800.0	13.79	72.95	7,589.8	515.0	1,679.6	1,756.8	0.00	0.00	0.00
7,900.0	13.79	72.95	7,687.0	522.0	1,702.4	1,780.6	0.00	0.00	0.00
Drop 3°/100'									
7,943.1	13.79	72.95	7,728.8	525.0	1,712.2	1,790.9	0.00	0.00	0.00
8,000.0	12.08	72.95	7,784.3	528.8	1,724.4	1,803.6	3.00	-3.00	0.00
8,100.0	9.08	72.95	7,882.6	534.1	1,741.9	1,822.0	3.00	-3.00	0.00
8,200.0	6.08	72.95	7,981.7	538.0	1,754.5	1,835.1	3.00	-3.00	0.00
8,300.0	3.08	72.95	8,081.3	540.3	1,762.2	1,843.1	3.00	-3.00	0.00
EOD @ 0.00° INC / 0.00° AZM / Build 1.5°/100' - Ohio Creek / TOG									
8,402.7	0.00	0.00	8,184.0	541.2	1,764.8	1,845.9	3.00	-3.00	-71.02
EOB @ 1.45° INC / 250.00° AZM									
8,499.6	1.45	250.00	8,280.9	540.7	1,763.6	1,844.7	1.50	1.50	-113.56
8,600.0	1.45	250.00	8,381.2	539.9	1,761.2	1,842.1	0.00	0.00	0.00
8,700.0	1.45	250.00	8,481.2	539.0	1,758.9	1,839.6	0.00	0.00	0.00
Williams Fork									
8,743.8	1.45	250.00	8,525.0	538.6	1,757.8	1,838.5	0.00	0.00	0.00
8,800.0	1.45	250.00	8,581.2	538.1	1,756.5	1,837.1	0.00	0.00	0.00
8,900.0	1.45	250.00	8,681.1	537.3	1,754.1	1,834.5	0.00	0.00	0.00

Database:	EDM 5000.1 Single User Db	Local Co-ordinate Reference:	Well BJU B26 FED 21D-26 496 - Slot BJU B26 FED 21D-26 496
Company:	Caerus Oil & Gas	TVD Reference:	RKB @ 8241.0usft (30')
Project:	Garfield County, CO	MD Reference:	RKB @ 8241.0usft (30')
Site:	BJU B26 496 Pad	North Reference:	True
Well:	BJU B26 FED 21D-26 496	Survey Calculation Method:	Minimum Curvature
Wellbore:	Wellbore #1		
Design:	Design #1		

Planned Survey										
Measured Depth (usft)	Inclination (°)	Azimuth (°)	Vertical Depth (usft)	+N/-S (usft)	+E/-W (usft)	Vertical Section (usft)	Dogleg Rate (°/100usft)	Build Rate (°/100usft)	Turn Rate (°/100usft)	
9,000.0	1.45	250.00	8,781.1	536.4	1,751.7	1,832.0	0.00	0.00	0.00	
9,100.0	1.45	250.00	8,881.1	535.5	1,749.3	1,829.5	0.00	0.00	0.00	
9,200.0	1.45	250.00	8,981.0	534.7	1,747.0	1,826.9	0.00	0.00	0.00	
9,300.0	1.45	250.00	9,081.0	533.8	1,744.6	1,824.4	0.00	0.00	0.00	
9,400.0	1.45	250.00	9,181.0	532.9	1,742.2	1,821.9	0.00	0.00	0.00	
9,500.0	1.45	250.00	9,281.0	532.1	1,739.8	1,819.3	0.00	0.00	0.00	
9,600.0	1.45	250.00	9,380.9	531.2	1,737.4	1,816.8	0.00	0.00	0.00	
9,700.0	1.45	250.00	9,480.9	530.3	1,735.0	1,814.3	0.00	0.00	0.00	
9,800.0	1.45	250.00	9,580.9	529.5	1,732.7	1,811.7	0.00	0.00	0.00	
9,900.0	1.45	250.00	9,680.8	528.6	1,730.3	1,809.2	0.00	0.00	0.00	
10,000.0	1.45	250.00	9,780.8	527.7	1,727.9	1,806.7	0.00	0.00	0.00	
10,100.0	1.45	250.00	9,880.8	526.9	1,725.5	1,804.1	0.00	0.00	0.00	
10,200.0	1.45	250.00	9,980.7	526.0	1,723.1	1,801.6	0.00	0.00	0.00	
10,300.0	1.45	250.00	10,080.7	525.1	1,720.7	1,799.1	0.00	0.00	0.00	
10,400.0	1.45	250.00	10,180.7	524.3	1,718.4	1,796.5	0.00	0.00	0.00	
10,500.0	1.45	250.00	10,280.6	523.4	1,716.0	1,794.0	0.00	0.00	0.00	
10,600.0	1.45	250.00	10,380.6	522.5	1,713.6	1,791.5	0.00	0.00	0.00	
10,700.0	1.45	250.00	10,480.6	521.6	1,711.2	1,789.0	0.00	0.00	0.00	
10,800.0	1.45	250.00	10,580.5	520.8	1,708.8	1,786.4	0.00	0.00	0.00	
10,900.0	1.45	250.00	10,680.5	519.9	1,706.4	1,783.9	0.00	0.00	0.00	
11,000.0	1.45	250.00	10,780.5	519.0	1,704.1	1,781.4	0.00	0.00	0.00	
11,100.0	1.45	250.00	10,880.4	518.2	1,701.7	1,778.8	0.00	0.00	0.00	
11,200.0	1.45	250.00	10,980.4	517.3	1,699.3	1,776.3	0.00	0.00	0.00	
11,300.0	1.45	250.00	11,080.4	516.4	1,696.9	1,773.8	0.00	0.00	0.00	
11,400.0	1.45	250.00	11,180.3	515.6	1,694.5	1,771.2	0.00	0.00	0.00	
11,500.0	1.45	250.00	11,280.3	514.7	1,692.2	1,768.7	0.00	0.00	0.00	
11,600.0	1.45	250.00	11,380.3	513.8	1,689.8	1,766.2	0.00	0.00	0.00	
Cameo										
11,694.8	1.45	250.00	11,475.0	513.0	1,687.5	1,763.8	0.00	0.00	0.00	
11,700.0	1.45	250.00	11,480.2	513.0	1,687.4	1,763.6	0.00	0.00	0.00	
11,800.0	1.45	250.00	11,580.2	512.1	1,685.0	1,761.1	0.00	0.00	0.00	
11,900.0	1.45	250.00	11,680.2	511.2	1,682.6	1,758.6	0.00	0.00	0.00	
12,000.0	1.45	250.00	11,780.1	510.4	1,680.2	1,756.0	0.00	0.00	0.00	
12,100.0	1.45	250.00	11,880.1	509.5	1,677.9	1,753.5	0.00	0.00	0.00	
Rollins										
12,194.9	1.45	250.00	11,975.0	508.7	1,675.6	1,751.1	0.00	0.00	0.00	
12,200.0	1.45	250.00	11,980.1	508.6	1,675.5	1,751.0	0.00	0.00	0.00	
12,300.0	1.45	250.00	12,080.1	507.8	1,673.1	1,748.4	0.00	0.00	0.00	
TD @ 12395.0' MD / 12175.0' TVD										
12,395.0	1.45	250.00	12,175.0	506.9	1,670.8	1,746.0	0.00	0.00	0.00	

Database:	EDM 5000.1 Single User Db	Local Co-ordinate Reference:	Well BJU B26 FED 21D-26 496 - Slot BJU B26 FED 21D-26 496
Company:	Caerus Oil & Gas	TVD Reference:	RKB @ 8241.0usft (30')
Project:	Garfield County, CO	MD Reference:	RKB @ 8241.0usft (30')
Site:	BJU B26 496 Pad	North Reference:	True
Well:	BJU B26 FED 21D-26 496	Survey Calculation Method:	Minimum Curvature
Wellbore:	Wellbore #1		
Design:	Design #1		

Design Targets

Target Name

- hit/miss target - Shape	Dip Angle (°)	Dip Dir. (°)	TVD (usft)	+N/-S (usft)	+E/-W (usft)	Northing (usft)	Easting (usft)	Latitude	Longitude
21D-26 - OHCR - plan hits target center - Ellipse (radii L100.0 W50.0 on 250.00 azi)	0.00	0.00	8,184.0	541.2	1,764.8	14,422,139.99	2,447,571.63	39.679200	-108.131507
21D-26 - PBHL - plan hits target center - Point	0.00	0.00	12,175.0	506.9	1,670.8	14,422,102.80	2,447,478.80	39.679106	-108.131840

Formations

Measured Depth (usft)	Vertical Depth (usft)	Name	Lithology	Dip (°)	Dip Direction (°)
3,587.8	3,499.0	Wasatch			
6,059.0	5,899.0	Wasatch G			
6,367.9	6,199.0	Fort Union			
8,402.7	8,184.0	Ohio Creek / TOG			
8,743.8	8,525.0	Williams Fork			
11,694.8	11,475.0	Cameo			
12,194.9	11,975.0	Rollins			

Plan Annotations

Measured Depth (usft)	Vertical Depth (usft)	Local Coordinates		Comment
		+N/-S (usft)	+E/-W (usft)	
200.0	200.0	0.0	0.0	Build 3°/100'
659.6	655.2	16.1	52.6	EOB @ 13.79° INC / 72.95° AZM
7,943.1	7,728.8	525.0	1,712.2	Drop 3°/100'
8,402.7	8,184.0	541.2	1,764.8	EOD @ 0.00° INC / 0.00° AZM / Build 1.5°/100'
8,499.6	8,280.9	540.7	1,763.6	EOB @ 1.45° INC / 250.00° AZM
12,395.0	12,175.0	506.9	1,670.8	TD @ 12395.0' MD / 12175.0' TVD