

Project: Garfield County, CO
 Site: BJU B26 496 Pad
 Well: BJU B26 FED 15A-26 496
 Wellbore: Wellbore #1
 Design: Design #1
 Latitude: 39.677097
 Longitude: -108.137766
 Ground Level: 8211.0
 RKB @ 8241.0usft (30')

PROJECT DETAILS: Garfield County, CO

Geodetic System: Universal Transverse Mercator (US Survey Feet)
 Datum: NAD 1927 - Western US
 Ellipsoid: Clarke 1866
 Zone: Zone 12N (114 W to 108 W)
 System Datum: Mean Sea Level

REFERENCE INFORMATION

Vertical (TVD) Reference: RKB @ 8241.0usft (30')
 Section (VS) Reference: Slot - BJU B26 FED 15A-26 496(0.0N, 0.0E)
 Measured Depth Reference: RKB @ 8241.0usft (30')
 Calculation Method: Minimum Curvature

SECTION DETAILS

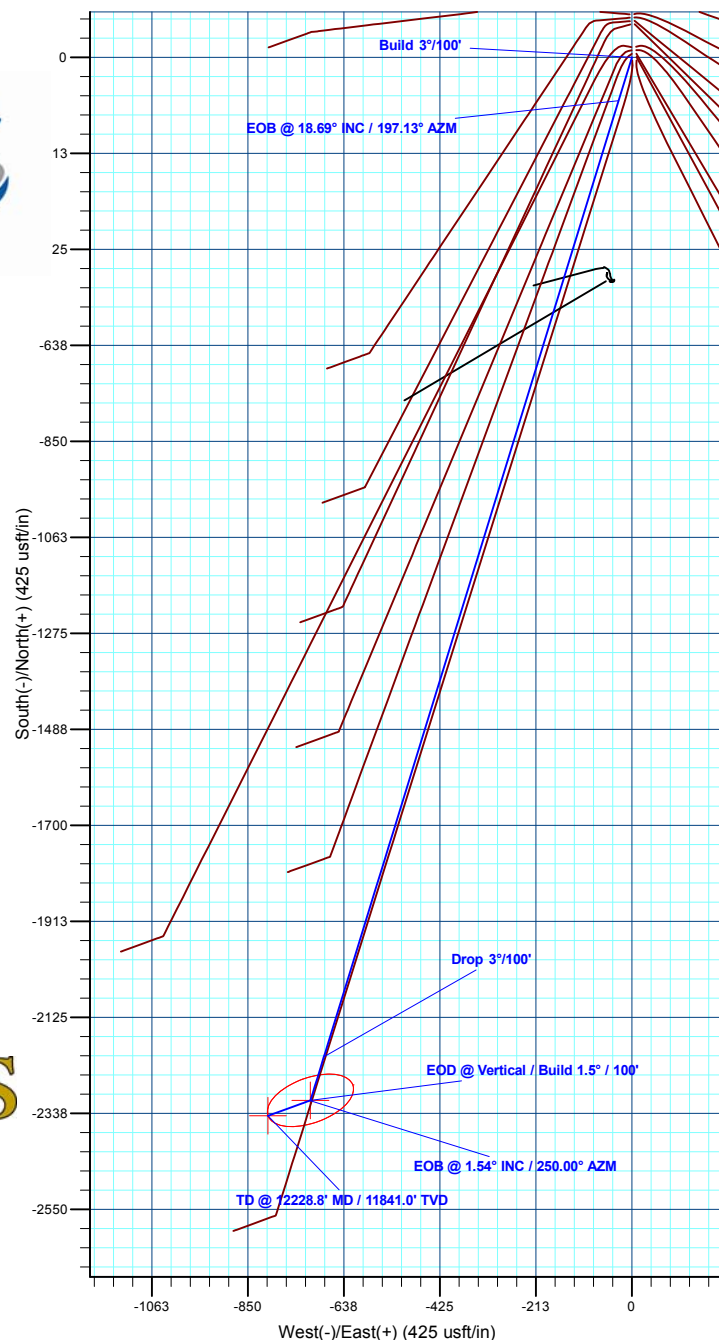
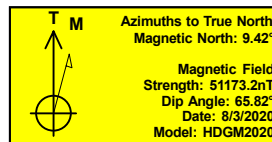
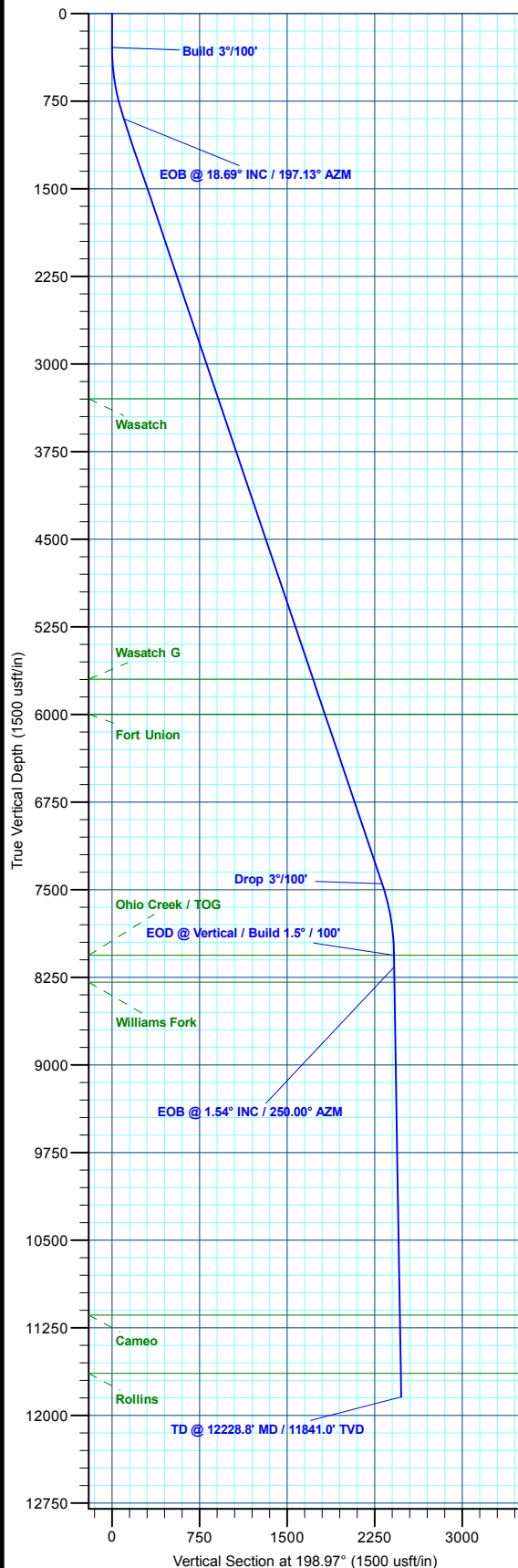
MD	Inc	Azi	TVD	+N/-S	+E/-W	Dleg	TFace	VSec	Annotation
0.0	0.00	0.00	0.0	0.0	0.0	0.00	0.00	0.0	
290.0	0.00	0.00	290.0	0.0	0.0	0.00	0.00	0.0	Build 3°/100'
912.9	18.69	197.13	901.9	-96.2	-29.7	3.00	197.13	100.6	EOB @ 18.69° INC / 197.13° AZM
7825.5	18.69	197.13	7450.1	-2212.9	-682.1	0.00	0.00	2314.4	Drop 3°/100'
8448.4	0.00	0.00	8062.0	-2309.1	-711.7	3.00	180.00	2415.0	EOD @ Vertical / Build 1.5° / 100'
8550.9	1.54	250.00	8164.4	-2309.5	-713.0	1.50	250.00	2415.9	EOB @ 1.54° INC / 250.00° AZM
12228.8	1.54	250.00	11841.0	-2343.3	-805.7	0.00	0.00	2477.9	TD @ 12228.8' MD / 11841.0' TVD

DESIGN TARGET DETAILS

Name	TVD	+N/-S	+E/-W	Northing	Easting	Latitude	Longitude
15A-26 - OHCR	8062.0	-2309.1	-711.7	14418987.19	2445196.73	39.670760	-108.140293
15A-26 - PBHL	11841.0	-2343.3	-805.7	14418950.00	2445103.90	39.670666	-108.140627

WELL DETAILS: BJU B26 FED 15A-26 496

+N/-S	+E/-W	Ground Level : 8211.0	Northing	Easting	Latitude	Longitude
0.0	0.0		14421317.80	2445834.40	39.677097	-108.137766



Plan: Design #1 (BJU B26 FED 15A-26 496/Wellbore #1)

Created By: Will Jircik

Date: 11:12, August 06 2020



Caerus Oil & Gas

Garfield County, CO

BJU B26 496 Pad

BJU B26 FED 15A-26 496 - Slot BJU B26 FED 15A-26 496

Wellbore #1

Plan: Design #1

QES Well Planning Report

06 August, 2020



Database:	EDM 5000.1 Single User Db	Local Co-ordinate Reference:	Well BJU B26 FED 15A-26 496 - Slot BJU B26 FED 15A-26 496
Company:	Caerus Oil & Gas	TVD Reference:	RKB @ 8241.0usft (30')
Project:	Garfield County, CO	MD Reference:	RKB @ 8241.0usft (30')
Site:	BJU B26 496 Pad	North Reference:	True
Well:	BJU B26 FED 15A-26 496	Survey Calculation Method:	Minimum Curvature
Wellbore:	Wellbore #1		
Design:	Design #1		

Project	Garfield County, CO		
Map System:	Universal Transverse Mercator (US Survey Fee	System Datum:	Mean Sea Level
Geo Datum:	NAD 1927 - Western US		
Map Zone:	Zone 12N (114 W to 108 W)		

Site	BJU B26 496 Pad		
Site Position:		Northing:	14,421,469.70 usft
From:	Map	Easting:	2,445,821.30 usft
Position Uncertainty:	0.0 usft	Slot Radius:	13-3/16 "
		Latitude:	39.677515
		Longitude:	-108.137796
		Grid Convergence:	1.83 °

Well	BJU B26 FED 15A-26 496 - Slot BJU B26 FED 15A-26 496		
Well Position	+N/-S	-152.2 usft	Northing: 14,421,317.80 usft
	+E/-W	8.2 usft	Easting: 2,445,834.40 usft
Position Uncertainty		0.0 usft	Wellhead Elevation:
			Ground Level: 8,211.0 usft

Wellbore	Wellbore #1				
Magnetics	Model Name	Sample Date	Declination (°)	Dip Angle (°)	Field Strength (nT)
	HDGM2020	8/3/2020	9.42	65.82	51,173.20000000

Design	Design #1			
Audit Notes:				
Version:	Phase:	PLAN	Tie On Depth:	0.0
Vertical Section:	Depth From (TVD) (usft)	+N/-S (usft)	+E/-W (usft)	Direction (°)
	0.0	0.0	0.0	198.97

Plan Sections										
Measured Depth (usft)	Inclination (°)	Azimuth (°)	Vertical Depth (usft)	+N/-S (usft)	+E/-W (usft)	Dogleg Rate (°/100usft)	Build Rate (°/100usft)	Turn Rate (°/100usft)	TFO (°)	Target
0.0	0.00	0.00	0.0	0.0	0.0	0.00	0.00	0.00	0.00	
290.0	0.00	0.00	290.0	0.0	0.0	0.00	0.00	0.00	0.00	
912.9	18.69	197.13	901.9	-96.2	-29.7	3.00	3.00	0.00	197.13	
7,825.5	18.69	197.13	7,450.1	-2,212.9	-682.1	0.00	0.00	0.00	0.00	
8,448.4	0.00	0.00	8,062.0	-2,309.1	-711.7	3.00	-3.00	0.00	180.00	15A-26 - OHCR
8,550.9	1.54	250.00	8,164.4	-2,309.5	-713.0	1.50	1.50	-107.38	250.00	
12,228.8	1.54	250.00	11,841.0	-2,343.3	-805.7	0.00	0.00	0.00	0.00	15A-26 - PBHL

Database:	EDM 5000.1 Single User Db	Local Co-ordinate Reference:	Well BJU B26 FED 15A-26 496 - Slot BJU B26 FED 15A-26 496
Company:	Caerus Oil & Gas	TVD Reference:	RKB @ 8241.0usft (30')
Project:	Garfield County, CO	MD Reference:	RKB @ 8241.0usft (30')
Site:	BJU B26 496 Pad	North Reference:	True
Well:	BJU B26 FED 15A-26 496	Survey Calculation Method:	Minimum Curvature
Wellbore:	Wellbore #1		
Design:	Design #1		

Planned Survey

Measured Depth (usft)	Inclination (°)	Azimuth (°)	Vertical Depth (usft)	+N/-S (usft)	+E/-W (usft)	Vertical Section (usft)	Dogleg Rate (°/100usft)	Build Rate (°/100usft)	Turn Rate (°/100usft)
0.0	0.00	0.00	0.0	0.0	0.0	0.0	0.00	0.00	0.00
100.0	0.00	0.00	100.0	0.0	0.0	0.0	0.00	0.00	0.00
200.0	0.00	0.00	200.0	0.0	0.0	0.0	0.00	0.00	0.00
Build 3°/100'									
290.0	0.00	0.00	290.0	0.0	0.0	0.0	0.00	0.00	0.00
300.0	0.30	197.13	300.0	0.0	0.0	0.0	3.00	3.00	0.00
400.0	3.30	197.13	399.9	-3.0	-0.9	3.2	3.00	3.00	0.00
500.0	6.30	197.13	499.6	-11.0	-3.4	11.5	3.00	3.00	0.00
600.0	9.30	197.13	598.6	-24.0	-7.4	25.1	3.00	3.00	0.00
700.0	12.30	197.13	696.9	-41.9	-12.9	43.8	3.00	3.00	0.00
800.0	15.30	197.13	794.0	-64.7	-19.9	67.7	3.00	3.00	0.00
900.0	18.30	197.13	889.7	-92.3	-28.5	96.5	3.00	3.00	0.00
EOB @ 18.69° INC / 197.13° AZM									
912.9	18.69	197.13	901.9	-96.2	-29.7	100.6	3.00	3.00	0.00
1,000.0	18.69	197.13	984.4	-122.9	-37.9	128.5	0.00	0.00	0.00
1,100.0	18.69	197.13	1,079.2	-153.5	-47.3	160.5	0.00	0.00	0.00
1,200.0	18.69	197.13	1,173.9	-184.1	-56.8	192.6	0.00	0.00	0.00
1,300.0	18.69	197.13	1,268.6	-214.7	-66.2	224.6	0.00	0.00	0.00
1,400.0	18.69	197.13	1,363.3	-245.4	-75.6	256.6	0.00	0.00	0.00
1,500.0	18.69	197.13	1,458.1	-276.0	-85.1	288.6	0.00	0.00	0.00
1,600.0	18.69	197.13	1,552.8	-306.6	-94.5	320.7	0.00	0.00	0.00
1,700.0	18.69	197.13	1,647.5	-337.2	-103.9	352.7	0.00	0.00	0.00
1,800.0	18.69	197.13	1,742.2	-367.8	-113.4	384.7	0.00	0.00	0.00
1,900.0	18.69	197.13	1,837.0	-398.5	-122.8	416.7	0.00	0.00	0.00
2,000.0	18.69	197.13	1,931.7	-429.1	-132.3	448.8	0.00	0.00	0.00
2,100.0	18.69	197.13	2,026.4	-459.7	-141.7	480.8	0.00	0.00	0.00
2,200.0	18.69	197.13	2,121.2	-490.3	-151.1	512.8	0.00	0.00	0.00
2,300.0	18.69	197.13	2,215.9	-520.9	-160.6	544.8	0.00	0.00	0.00
2,400.0	18.69	197.13	2,310.6	-551.6	-170.0	576.9	0.00	0.00	0.00
2,500.0	18.69	197.13	2,405.3	-582.2	-179.4	608.9	0.00	0.00	0.00
2,600.0	18.69	197.13	2,500.1	-612.8	-188.9	640.9	0.00	0.00	0.00
2,700.0	18.69	197.13	2,594.8	-643.4	-198.3	672.9	0.00	0.00	0.00
2,800.0	18.69	197.13	2,689.5	-674.0	-207.8	705.0	0.00	0.00	0.00
2,900.0	18.69	197.13	2,784.2	-704.7	-217.2	737.0	0.00	0.00	0.00
3,000.0	18.69	197.13	2,879.0	-735.3	-226.6	769.0	0.00	0.00	0.00
3,100.0	18.69	197.13	2,973.7	-765.9	-236.1	801.0	0.00	0.00	0.00
3,200.0	18.69	197.13	3,068.4	-796.5	-245.5	833.1	0.00	0.00	0.00
3,300.0	18.69	197.13	3,163.2	-827.1	-254.9	865.1	0.00	0.00	0.00
3,400.0	18.69	197.13	3,257.9	-857.8	-264.4	897.1	0.00	0.00	0.00
Wasatch									
3,442.3	18.69	197.13	3,298.0	-870.7	-268.4	910.7	0.00	0.00	0.00
3,500.0	18.69	197.13	3,352.6	-888.4	-273.8	929.1	0.00	0.00	0.00
3,600.0	18.69	197.13	3,447.3	-919.0	-283.3	961.2	0.00	0.00	0.00
3,700.0	18.69	197.13	3,542.1	-949.6	-292.7	993.2	0.00	0.00	0.00
3,800.0	18.69	197.13	3,636.8	-980.2	-302.1	1,025.2	0.00	0.00	0.00
3,900.0	18.69	197.13	3,731.5	-1,010.9	-311.6	1,057.2	0.00	0.00	0.00
4,000.0	18.69	197.13	3,826.3	-1,041.5	-321.0	1,089.3	0.00	0.00	0.00
4,100.0	18.69	197.13	3,921.0	-1,072.1	-330.4	1,121.3	0.00	0.00	0.00
4,200.0	18.69	197.13	4,015.7	-1,102.7	-339.9	1,153.3	0.00	0.00	0.00
4,300.0	18.69	197.13	4,110.4	-1,133.3	-349.3	1,185.3	0.00	0.00	0.00
4,400.0	18.69	197.13	4,205.2	-1,164.0	-358.8	1,217.4	0.00	0.00	0.00
4,500.0	18.69	197.13	4,299.9	-1,194.6	-368.2	1,249.4	0.00	0.00	0.00
4,600.0	18.69	197.13	4,394.6	-1,225.2	-377.6	1,281.4	0.00	0.00	0.00

Database:	EDM 5000.1 Single User Db	Local Co-ordinate Reference:	Well BJU B26 FED 15A-26 496 - Slot BJU B26 FED 15A-26 496
Company:	Caerus Oil & Gas	TVD Reference:	RKB @ 8241.0usft (30')
Project:	Garfield County, CO	MD Reference:	RKB @ 8241.0usft (30')
Site:	BJU B26 496 Pad	North Reference:	True
Well:	BJU B26 FED 15A-26 496	Survey Calculation Method:	Minimum Curvature
Wellbore:	Wellbore #1		
Design:	Design #1		

Planned Survey									
Measured Depth (usft)	Inclination (°)	Azimuth (°)	Vertical Depth (usft)	+N/-S (usft)	+E/-W (usft)	Vertical Section (usft)	Dogleg Rate (°/100usft)	Build Rate (°/100usft)	Turn Rate (°/100usft)
4,700.0	18.69	197.13	4,489.3	-1,255.8	-387.1	1,313.4	0.00	0.00	0.00
4,800.0	18.69	197.13	4,584.1	-1,286.4	-396.5	1,345.5	0.00	0.00	0.00
4,900.0	18.69	197.13	4,678.8	-1,317.1	-405.9	1,377.5	0.00	0.00	0.00
5,000.0	18.69	197.13	4,773.5	-1,347.7	-415.4	1,409.5	0.00	0.00	0.00
5,100.0	18.69	197.13	4,868.3	-1,378.3	-424.8	1,441.5	0.00	0.00	0.00
5,200.0	18.69	197.13	4,963.0	-1,408.9	-434.3	1,473.6	0.00	0.00	0.00
5,300.0	18.69	197.13	5,057.7	-1,439.5	-443.7	1,505.6	0.00	0.00	0.00
5,400.0	18.69	197.13	5,152.4	-1,470.2	-453.1	1,537.6	0.00	0.00	0.00
5,500.0	18.69	197.13	5,247.2	-1,500.8	-462.6	1,569.6	0.00	0.00	0.00
5,600.0	18.69	197.13	5,341.9	-1,531.4	-472.0	1,601.7	0.00	0.00	0.00
5,700.0	18.69	197.13	5,436.6	-1,562.0	-481.5	1,633.7	0.00	0.00	0.00
5,800.0	18.69	197.13	5,531.4	-1,592.6	-490.9	1,665.7	0.00	0.00	0.00
5,900.0	18.69	197.13	5,626.1	-1,623.3	-500.3	1,697.7	0.00	0.00	0.00
Wasatch G									
5,975.9	18.69	197.13	5,698.0	-1,646.5	-507.5	1,722.1	0.00	0.00	0.00
6,000.0	18.69	197.13	5,720.8	-1,653.9	-509.8	1,729.8	0.00	0.00	0.00
6,100.0	18.69	197.13	5,815.5	-1,684.5	-519.2	1,761.8	0.00	0.00	0.00
6,200.0	18.69	197.13	5,910.3	-1,715.1	-528.6	1,793.8	0.00	0.00	0.00
Fort Union									
6,292.6	18.69	197.13	5,998.0	-1,743.5	-537.4	1,823.5	0.00	0.00	0.00
6,300.0	18.69	197.13	6,005.0	-1,745.7	-538.1	1,825.8	0.00	0.00	0.00
6,400.0	18.69	197.13	6,099.7	-1,776.4	-547.5	1,857.9	0.00	0.00	0.00
6,500.0	18.69	197.13	6,194.4	-1,807.0	-557.0	1,889.9	0.00	0.00	0.00
6,600.0	18.69	197.13	6,289.2	-1,837.6	-566.4	1,921.9	0.00	0.00	0.00
6,700.0	18.69	197.13	6,383.9	-1,868.2	-575.8	1,953.9	0.00	0.00	0.00
6,800.0	18.69	197.13	6,478.6	-1,898.8	-585.3	1,986.0	0.00	0.00	0.00
6,900.0	18.69	197.13	6,573.4	-1,929.5	-594.7	2,018.0	0.00	0.00	0.00
7,000.0	18.69	197.13	6,668.1	-1,960.1	-604.1	2,050.0	0.00	0.00	0.00
7,100.0	18.69	197.13	6,762.8	-1,990.7	-613.6	2,082.0	0.00	0.00	0.00
7,200.0	18.69	197.13	6,857.5	-2,021.3	-623.0	2,114.1	0.00	0.00	0.00
7,300.0	18.69	197.13	6,952.3	-2,051.9	-632.5	2,146.1	0.00	0.00	0.00
7,400.0	18.69	197.13	7,047.0	-2,082.6	-641.9	2,178.1	0.00	0.00	0.00
7,500.0	18.69	197.13	7,141.7	-2,113.2	-651.3	2,210.1	0.00	0.00	0.00
7,600.0	18.69	197.13	7,236.5	-2,143.8	-660.8	2,242.2	0.00	0.00	0.00
7,700.0	18.69	197.13	7,331.2	-2,174.4	-670.2	2,274.2	0.00	0.00	0.00
7,800.0	18.69	197.13	7,425.9	-2,205.0	-679.6	2,306.2	0.00	0.00	0.00
Drop 3°/100'									
7,825.5	18.69	197.13	7,450.1	-2,212.9	-682.1	2,314.4	0.00	0.00	0.00
7,900.0	16.45	197.13	7,521.1	-2,234.3	-688.7	2,336.9	3.00	-3.00	0.00
8,000.0	13.45	197.13	7,617.7	-2,259.0	-696.3	2,362.6	3.00	-3.00	0.00
8,100.0	10.45	197.13	7,715.5	-2,278.8	-702.4	2,383.3	3.00	-3.00	0.00
8,200.0	7.45	197.13	7,814.3	-2,293.7	-707.0	2,398.9	3.00	-3.00	0.00
8,300.0	4.45	197.13	7,913.7	-2,303.6	-710.0	2,409.3	3.00	-3.00	0.00
8,400.0	1.45	197.13	8,013.6	-2,308.5	-711.5	2,414.4	3.00	-3.00	0.00
EOD @ Vertical / Build 1.5° / 100' - Ohio Creek / TOG									
8,448.4	0.00	0.00	8,062.0	-2,309.1	-711.7	2,415.0	3.00	-3.00	0.00
8,500.0	0.77	250.00	8,113.6	-2,309.2	-712.0	2,415.2	1.50	1.50	0.00
EOB @ 1.54° INC / 250.00° AZM									
8,550.9	1.54	250.00	8,164.4	-2,309.5	-713.0	2,415.9	1.50	1.50	0.00
8,600.0	1.54	250.00	8,213.5	-2,310.0	-714.2	2,416.7	0.00	0.00	0.00
Williams Fork									
8,677.5	1.54	250.00	8,291.0	-2,310.7	-716.2	2,418.0	0.00	0.00	0.00

Database:	EDM 5000.1 Single User Db	Local Co-ordinate Reference:	Well BJU B26 FED 15A-26 496 - Slot BJU B26 FED 15A-26 496
Company:	Caerus Oil & Gas	TVD Reference:	RKB @ 8241.0usft (30')
Project:	Garfield County, CO	MD Reference:	RKB @ 8241.0usft (30')
Site:	BJU B26 496 Pad	North Reference:	True
Well:	BJU B26 FED 15A-26 496	Survey Calculation Method:	Minimum Curvature
Wellbore:	Wellbore #1		
Design:	Design #1		

Planned Survey									
Measured Depth (usft)	Inclination (°)	Azimuth (°)	Vertical Depth (usft)	+N/-S (usft)	+E/-W (usft)	Vertical Section (usft)	Dogleg Rate (°/100usft)	Build Rate (°/100usft)	Turn Rate (°/100usft)
8,700.0	1.54	250.00	8,313.5	-2,310.9	-716.8	2,418.4	0.00	0.00	0.00
8,800.0	1.54	250.00	8,413.5	-2,311.8	-719.3	2,420.1	0.00	0.00	0.00
8,900.0	1.54	250.00	8,513.4	-2,312.7	-721.8	2,421.8	0.00	0.00	0.00
9,000.0	1.54	250.00	8,613.4	-2,313.7	-724.3	2,423.5	0.00	0.00	0.00
9,100.0	1.54	250.00	8,713.4	-2,314.6	-726.8	2,425.1	0.00	0.00	0.00
9,200.0	1.54	250.00	8,813.3	-2,315.5	-729.4	2,426.8	0.00	0.00	0.00
9,300.0	1.54	250.00	8,913.3	-2,316.4	-731.9	2,428.5	0.00	0.00	0.00
9,400.0	1.54	250.00	9,013.3	-2,317.3	-734.4	2,430.2	0.00	0.00	0.00
9,500.0	1.54	250.00	9,113.2	-2,318.3	-736.9	2,431.9	0.00	0.00	0.00
9,600.0	1.54	250.00	9,213.2	-2,319.2	-739.4	2,433.6	0.00	0.00	0.00
9,700.0	1.54	250.00	9,313.2	-2,320.1	-742.0	2,435.3	0.00	0.00	0.00
9,800.0	1.54	250.00	9,413.1	-2,321.0	-744.5	2,437.0	0.00	0.00	0.00
9,900.0	1.54	250.00	9,513.1	-2,321.9	-747.0	2,438.6	0.00	0.00	0.00
10,000.0	1.54	250.00	9,613.0	-2,322.8	-749.5	2,440.3	0.00	0.00	0.00
10,100.0	1.54	250.00	9,713.0	-2,323.8	-752.0	2,442.0	0.00	0.00	0.00
10,200.0	1.54	250.00	9,813.0	-2,324.7	-754.6	2,443.7	0.00	0.00	0.00
10,300.0	1.54	250.00	9,912.9	-2,325.6	-757.1	2,445.4	0.00	0.00	0.00
10,400.0	1.54	250.00	10,012.9	-2,326.5	-759.6	2,447.1	0.00	0.00	0.00
10,500.0	1.54	250.00	10,112.9	-2,327.4	-762.1	2,448.8	0.00	0.00	0.00
10,600.0	1.54	250.00	10,212.8	-2,328.3	-764.6	2,450.4	0.00	0.00	0.00
10,700.0	1.54	250.00	10,312.8	-2,329.3	-767.2	2,452.1	0.00	0.00	0.00
10,800.0	1.54	250.00	10,412.8	-2,330.2	-769.7	2,453.8	0.00	0.00	0.00
10,900.0	1.54	250.00	10,512.7	-2,331.1	-772.2	2,455.5	0.00	0.00	0.00
11,000.0	1.54	250.00	10,612.7	-2,332.0	-774.7	2,457.2	0.00	0.00	0.00
11,100.0	1.54	250.00	10,712.6	-2,332.9	-777.2	2,458.9	0.00	0.00	0.00
11,200.0	1.54	250.00	10,812.6	-2,333.8	-779.8	2,460.6	0.00	0.00	0.00
11,300.0	1.54	250.00	10,912.6	-2,334.8	-782.3	2,462.3	0.00	0.00	0.00
11,400.0	1.54	250.00	11,012.5	-2,335.7	-784.8	2,463.9	0.00	0.00	0.00
11,500.0	1.54	250.00	11,112.5	-2,336.6	-787.3	2,465.6	0.00	0.00	0.00
Cameo									
11,528.5	1.54	250.00	11,141.0	-2,336.9	-788.0	2,466.1	0.00	0.00	0.00
11,600.0	1.54	250.00	11,212.5	-2,337.5	-789.8	2,467.3	0.00	0.00	0.00
11,700.0	1.54	250.00	11,312.4	-2,338.4	-792.4	2,469.0	0.00	0.00	0.00
11,800.0	1.54	250.00	11,412.4	-2,339.4	-794.9	2,470.7	0.00	0.00	0.00
11,900.0	1.54	250.00	11,512.4	-2,340.3	-797.4	2,472.4	0.00	0.00	0.00
12,000.0	1.54	250.00	11,612.3	-2,341.2	-799.9	2,474.1	0.00	0.00	0.00
Rollins									
12,028.7	1.54	250.00	11,641.0	-2,341.5	-800.6	2,474.5	0.00	0.00	0.00
12,100.0	1.54	250.00	11,712.3	-2,342.1	-802.4	2,475.8	0.00	0.00	0.00
12,200.0	1.54	250.00	11,812.3	-2,343.0	-805.0	2,477.4	0.00	0.00	0.00
TD @ 12228.8' MD / 11841.0' TVD									
12,228.8	1.54	250.00	11,841.0	-2,343.3	-805.7	2,477.9	0.00	0.00	0.00

Database:	EDM 5000.1 Single User Db	Local Co-ordinate Reference:	Well BJU B26 FED 15A-26 496 - Slot BJU B26 FED 15A-26 496
Company:	Caerus Oil & Gas	TVD Reference:	RKB @ 8241.0usft (30')
Project:	Garfield County, CO	MD Reference:	RKB @ 8241.0usft (30')
Site:	BJU B26 496 Pad	North Reference:	True
Well:	BJU B26 FED 15A-26 496	Survey Calculation Method:	Minimum Curvature
Wellbore:	Wellbore #1		
Design:	Design #1		

Design Targets

Target Name - hit/miss target - Shape	Dip Angle (°)	Dip Dir. (°)	TVD (usft)	+N/-S (usft)	+E/-W (usft)	Northing (usft)	Easting (usft)	Latitude	Longitude
15A-26 - OHCR - plan hits target center - Ellipse (radii L100.0 W50.0 on 250.00 azi)	0.00	0.00	8,062.0	-2,309.1	-711.7	14,418,987.19	2,445,196.73	39.670760	-108.140294
15A-26 - PBHL - plan hits target center - Point	0.00	0.00	11,841.0	-2,343.3	-805.7	14,418,950.00	2,445,103.90	39.670666	-108.140627

Formations

Measured Depth (usft)	Vertical Depth (usft)	Name	Lithology	Dip (°)	Dip Direction (°)
3,442.3	3,298.0	Wasatch			
5,975.9	5,698.0	Wasatch G			
6,292.6	5,998.0	Fort Union			
8,448.4	8,062.0	Ohio Creek / TOG			
8,677.5	8,291.0	Williams Fork			
11,528.5	11,141.0	Cameo			
12,028.7	11,641.0	Rollins			

Plan Annotations

Measured Depth (usft)	Vertical Depth (usft)	Local Coordinates		Comment
		+N/-S (usft)	+E/-W (usft)	
290.0	290.0	0.0	0.0	Build 3°/100'
912.9	901.9	-96.2	-29.7	EOB @ 18.69° INC / 197.13° AZM
7,825.5	7,450.1	-2,212.9	-682.1	Drop 3°/100'
8,448.4	8,062.0	-2,309.1	-711.7	EOD @ Vertical / Build 1.5° / 100'
8,550.9	8,164.4	-2,309.5	-713.0	EOB @ 1.54° INC / 250.00° AZM
12,228.8	11,841.0	-2,343.3	-805.7	TD @ 12228.8' MD / 11841.0' TVD