

Project: Garfield County, CO  
 Site: BJU B26 496 Pad  
 Well: BJU B26 FED 14A-26 496  
 Wellbore: Wellbore #1  
 Design: Design #1  
 Latitude: 39.677117  
 Longitude: -108.137767  
 Ground Level: 8211.0  
 RKB @ 8241.0usft (30')

PROJECT DETAILS: Garfield County, CO  
 Geodetic System: Universal Transverse Mercator (US Survey Feet)  
 Datum: NAD 1927 - Western US  
 Ellipsoid: Clarke 1866  
 Zone: Zone 12N (114 W to 108 W)  
 System Datum: Mean Sea Level

REFERENCE INFORMATION  
 Vertical (TVD) Reference: RKB @ 8241.0usft (30')  
 Section (VS) Reference: Slot - BJU B26 FED 14A-26 496(0.0N, 0.0E)  
 Measured Depth Reference: RKB @ 8241.0usft (30')  
 Calculation Method: Minimum Curvature

#### FORMATION TOP DETAILS

TVDPath	MDPath	Formation
3310.0	3400.1	Wasatch
5710.0	5880.0	Wasatch G
6010.0	6190.0	Fort Union
8066.0	8303.7	Ohio Creek / TOG
8304.0	8541.8	Williams Fork
11189.0	11421.8	Cameo
11689.0	11927.9	Rollins

#### SECTION DETAILS

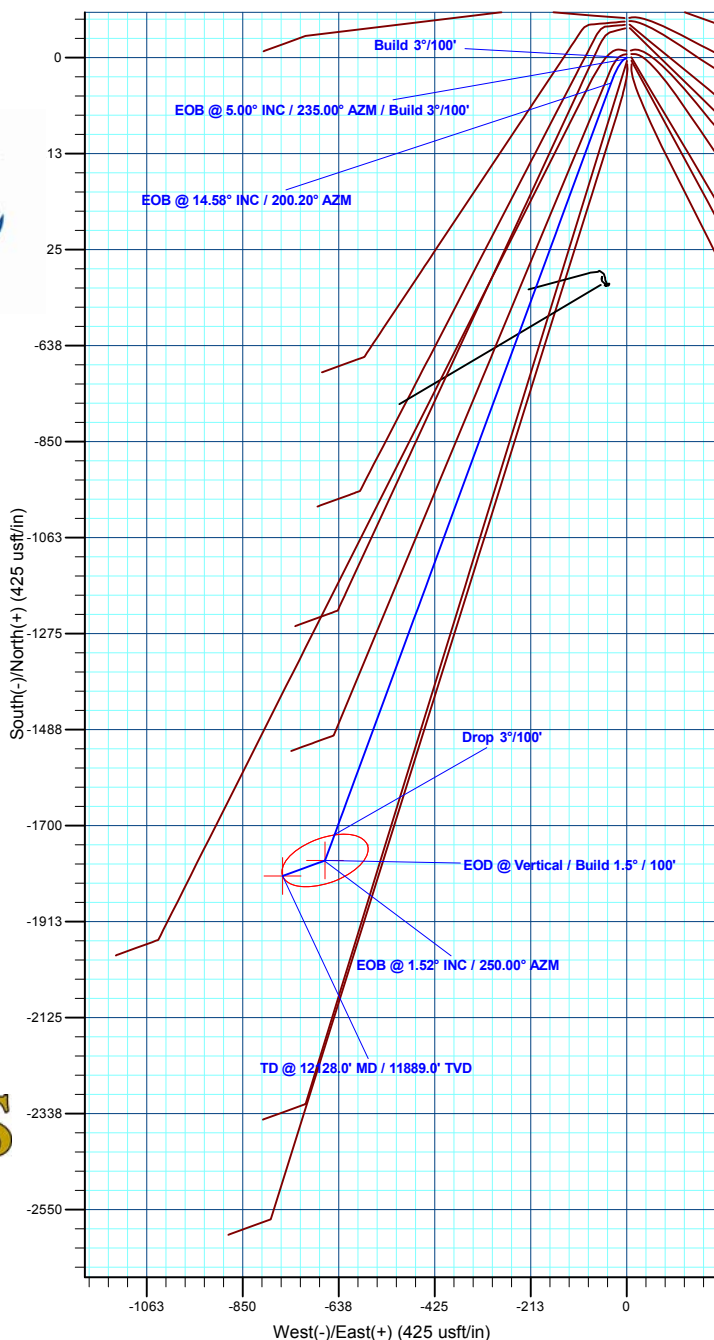
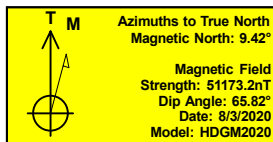
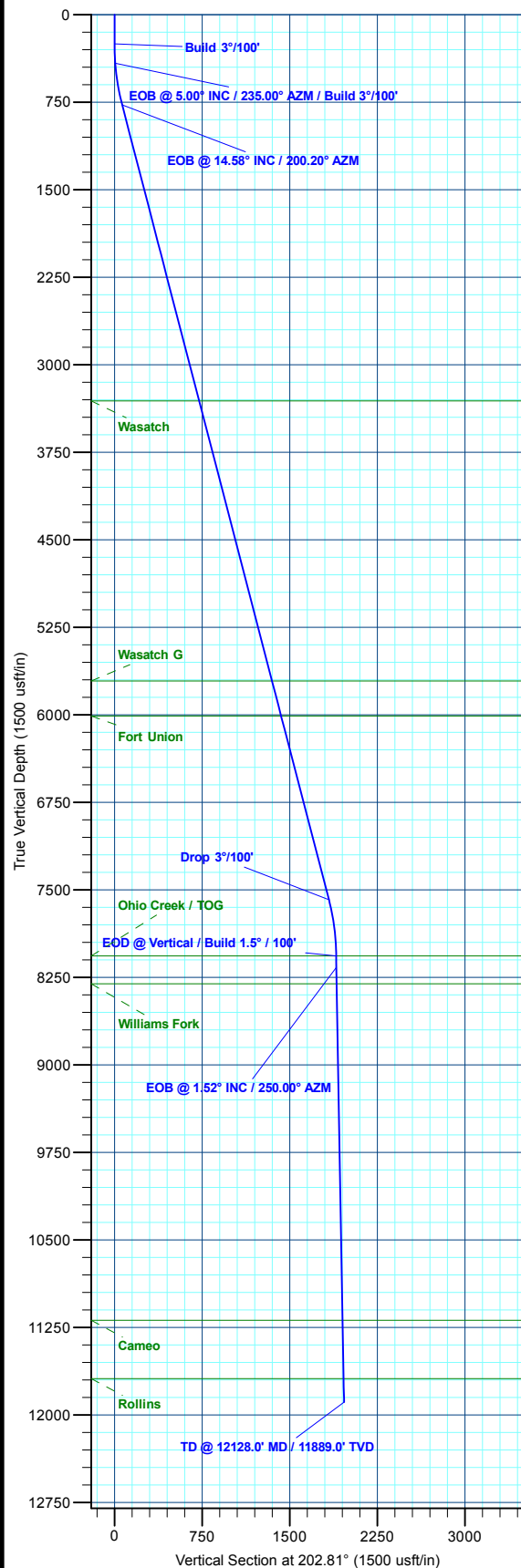
MD	Inc	Azi	TVD	+N/-S	+E/-W	Dleg	TFace	Vsect	Annotation
0.0	0.00	0.00	0.0	0.0	0.0	0.00	0.00	0.0	
250.0	0.00	0.00	250.0	0.0	0.0	0.00	0.00	0.0	Build 3"/100'
416.7	5.00	235.00	416.5	-4.2	-6.0	3.00	235.00	6.2	EOB @ 5.00° INC / 235.00° AZM / Build 3"/100'
778.4	14.58	200.20	772.7	-56.1	-34.7	3.00	-49.76	65.2	EOB @ 14.58° INC / 200.20° AZM
7817.6	14.58	200.20	7585.1	-1719.6	-646.7	0.00	0.00	1835.8	Drop 3"/100'
8303.7	0.00	0.00	8066.0	-1777.3	-667.9	3.00	180.00	1897.2	EOD @ Vertical / Build 1.5" / 100'
8404.9	1.52	250.00	8167.2	-1777.8	-669.2	1.50	250.00	1898.2	EOB @ 1.52° INC / 250.00° AZM
12128.0	1.52	250.00	11889.0	-1811.5	-761.9	0.00	0.00	1965.2	TD @ 12128.0' MD / 11889.0' TVD

#### DESIGN TARGET DETAILS

Name	TVD	+N/-S	+E/-W	Northing	Easting	Latitude	Longitude
14A-26 - OHCR	8066.0	-1777.3	-667.9	14419527.59	2445222.93	39.672240	-108.140139
14A-26 - PBHL	11889.0	-1811.5	-761.9	14419490.40	2445130.10	39.672146	-108.140473

#### WELL DETAILS: BJU B26 FED 14A-26 496

+N/-S	+E/-W	Ground Level : 8211.0	Northing	Easting	Latitude	Longitude
0.0	0.0		14421325.30	2445833.80	39.677117	-108.137767



Plan: Design #1 (BJU B26 FED 14A-26 496/Wellbore #1)

Created By: Will Jircik Date: 11:17, August 06 2020



## **Caerus Oil & Gas**

**Garfield County, CO**

**BJU B26 496 Pad**

**BJU B26 FED 14A-26 496 - Slot BJU B26 FED 14A-26 496**

**Wellbore #1**

**Plan: Design #1**

## **QES Well Planning Report**

**06 August, 2020**



<b>Database:</b>	EDM 5000.1 Single User Db	<b>Local Co-ordinate Reference:</b>	Well BJU B26 FED 14A-26 496 - Slot BJU B26 FED 14A-26 496
<b>Company:</b>	Caerus Oil & Gas	<b>TVD Reference:</b>	RKB @ 8241.0usft (30')
<b>Project:</b>	Garfield County, CO	<b>MD Reference:</b>	RKB @ 8241.0usft (30')
<b>Site:</b>	BJU B26 496 Pad	<b>North Reference:</b>	True
<b>Well:</b>	BJU B26 FED 14A-26 496	<b>Survey Calculation Method:</b>	Minimum Curvature
<b>Wellbore:</b>	Wellbore #1		
<b>Design:</b>	Design #1		

<b>Project</b>	Garfield County, CO		
<b>Map System:</b>	Universal Transverse Mercator (US Survey Fee	<b>System Datum:</b>	Mean Sea Level
<b>Geo Datum:</b>	NAD 1927 - Western US		
<b>Map Zone:</b>	Zone 12N (114 W to 108 W)		

Site		BJU B26 496 Pad				
Site Position:		Northing:	14,421,469.70 usft	Latitude:	39.677515	
From:	Map	Easting:	2,445,821.30 usft	Longitude:	-108.137796	
Position Uncertainty:		0.0 usft	Slot Radius:	13-3/16 "	Grid Convergence:	1.83 °

Well	BJU B26 FED 14A-26 496 - Slot BJU B26 FED 14A-26 496					
Well Position	+N/-S	-144.7 usft	Northing:	14,421,325.30 usft	Latitude:	39.677118
	+E/-W	7.9 usft	Easting:	2,445,833.80 usft	Longitude:	-108.137768
Position Uncertainty		0.0 usft	Wellhead Elevation:		Ground Level:	8,211.0 usft

<b>Wellbore</b>	Wellbore #1				
<b>Magnetics</b>	<b>Model Name</b>	<b>Sample Date</b>	<b>Declination (°)</b>	<b>Dip Angle (°)</b>	<b>Field Strength (nT)</b>
	HDGM2020	8/3/2020	9.42	65.82	51,173.20000000

<b>Design</b>	Design #1				
<b>Audit Notes:</b>					
<b>Version:</b>	<b>Phase:</b>	PLAN	<b>Tie On Depth:</b>	0.0	
<b>Vertical Section:</b>	<b>Depth From (TVD) (usft)</b>	<b>+N/-S (usft)</b>	<b>+E/-W (usft)</b>	<b>Direction (°)</b>	
	0.0	0.0	0.0	202.81	

<b>Plan Sections</b>										
Measured Depth (usft)	Inclination (°)	Azimuth (°)	Vertical Depth (usft)	+N/-S (usft)	+E/-W (usft)	Dogleg Rate (°/100usft)	Build Rate (°/100usft)	Turn Rate (°/100usft)	TFO (°)	Target
0.0	0.00	0.00	0.0	0.0	0.0	0.00	0.00	0.00	0.00	
250.0	0.00	0.00	250.0	0.0	0.0	0.00	0.00	0.00	0.00	
416.7	5.00	235.00	416.5	-4.2	-6.0	3.00	3.00	0.00	235.00	
778.4	14.58	200.20	772.7	-56.1	-34.7	3.00	2.65	-9.62	-49.76	
7,817.6	14.58	200.20	7,585.1	-1,719.6	-646.7	0.00	0.00	0.00	0.00	
8,303.7	0.00	0.00	8,066.0	-1,777.3	-667.9	3.00	-3.00	0.00	180.00	14A-26 - OHCR
8,404.9	1.52	250.00	8,167.2	-1,777.8	-669.2	1.50	1.50	-108.66	250.00	
12,128.0	1.52	250.00	11,889.0	-1,811.5	-761.9	0.00	0.00	0.00	0.00	14A-26 - PBHL

<b>Database:</b>	EDM 5000.1 Single User Db	<b>Local Co-ordinate Reference:</b>	Well BJU B26 FED 14A-26 496 - Slot BJU B26 FED 14A-26 496
<b>Company:</b>	Caerus Oil & Gas	<b>TVD Reference:</b>	RKB @ 8241.0usft (30')
<b>Project:</b>	Garfield County, CO	<b>MD Reference:</b>	RKB @ 8241.0usft (30')
<b>Site:</b>	BJU B26 496 Pad	<b>North Reference:</b>	True
<b>Well:</b>	BJU B26 FED 14A-26 496	<b>Survey Calculation Method:</b>	Minimum Curvature
<b>Wellbore:</b>	Wellbore #1		
<b>Design:</b>	Design #1		

**Planned Survey**

Measured Depth (usft)	Inclination (°)	Azimuth (°)	Vertical Depth (usft)	+N/-S (usft)	+E/-W (usft)	Vertical Section (usft)	Dogleg Rate (°/100usft)	Build Rate (°/100usft)	Turn Rate (°/100usft)
0.0	0.00	0.00	0.0	0.0	0.0	0.0	0.00	0.00	0.00
100.0	0.00	0.00	100.0	0.0	0.0	0.0	0.00	0.00	0.00
200.0	0.00	0.00	200.0	0.0	0.0	0.0	0.00	0.00	0.00
<b>Build 3°/100'</b>									
250.0	0.00	0.00	250.0	0.0	0.0	0.0	0.00	0.00	0.00
300.0	1.50	235.00	300.0	-0.4	-0.5	0.6	3.00	3.00	0.00
400.0	4.50	235.00	399.8	-3.4	-4.8	5.0	3.00	3.00	0.00
<b>EOB @ 5.00° INC / 235.00° AZM / Build 3°/100'</b>									
416.7	5.00	235.00	416.5	-4.2	-6.0	6.2	3.00	3.00	0.00
500.0	6.88	218.87	499.3	-10.1	-12.1	14.0	3.00	2.26	-19.35
600.0	9.53	208.76	598.3	-22.1	-19.8	28.0	3.00	2.64	-10.11
700.0	12.33	203.11	696.5	-39.1	-28.0	46.9	3.00	2.81	-5.65
<b>EOB @ 14.58° INC / 200.20° AZM</b>									
778.4	14.58	200.20	772.7	-56.1	-34.7	65.2	3.00	2.87	-3.71
800.0	14.58	200.20	793.6	-61.2	-36.6	70.6	0.00	0.00	0.00
900.0	14.58	200.20	890.4	-84.8	-45.2	95.7	0.00	0.00	0.00
1,000.0	14.58	200.20	987.2	-108.5	-53.9	120.9	0.00	0.00	0.00
1,100.0	14.58	200.20	1,084.0	-132.1	-62.6	146.1	0.00	0.00	0.00
1,200.0	14.58	200.20	1,180.8	-155.7	-71.3	171.2	0.00	0.00	0.00
1,300.0	14.58	200.20	1,277.5	-179.4	-80.0	196.4	0.00	0.00	0.00
1,400.0	14.58	200.20	1,374.3	-203.0	-88.7	221.5	0.00	0.00	0.00
1,500.0	14.58	200.20	1,471.1	-226.6	-97.4	246.7	0.00	0.00	0.00
1,600.0	14.58	200.20	1,567.9	-250.3	-106.1	271.8	0.00	0.00	0.00
1,700.0	14.58	200.20	1,664.6	-273.9	-114.8	297.0	0.00	0.00	0.00
1,800.0	14.58	200.20	1,761.4	-297.5	-123.5	322.1	0.00	0.00	0.00
1,900.0	14.58	200.20	1,858.2	-321.2	-132.2	347.3	0.00	0.00	0.00
2,000.0	14.58	200.20	1,955.0	-344.8	-140.9	372.4	0.00	0.00	0.00
2,100.0	14.58	200.20	2,051.8	-368.4	-149.6	397.6	0.00	0.00	0.00
2,200.0	14.58	200.20	2,148.5	-392.0	-158.3	422.7	0.00	0.00	0.00
2,300.0	14.58	200.20	2,245.3	-415.7	-167.0	447.9	0.00	0.00	0.00
2,400.0	14.58	200.20	2,342.1	-439.3	-175.7	473.1	0.00	0.00	0.00
2,500.0	14.58	200.20	2,438.9	-462.9	-184.4	498.2	0.00	0.00	0.00
2,600.0	14.58	200.20	2,535.6	-486.6	-193.0	523.4	0.00	0.00	0.00
2,700.0	14.58	200.20	2,632.4	-510.2	-201.7	548.5	0.00	0.00	0.00
2,800.0	14.58	200.20	2,729.2	-533.8	-210.4	573.7	0.00	0.00	0.00
2,900.0	14.58	200.20	2,826.0	-557.5	-219.1	598.8	0.00	0.00	0.00
3,000.0	14.58	200.20	2,922.8	-581.1	-227.8	624.0	0.00	0.00	0.00
3,100.0	14.58	200.20	3,019.5	-604.7	-236.5	649.1	0.00	0.00	0.00
3,200.0	14.58	200.20	3,116.3	-628.4	-245.2	674.3	0.00	0.00	0.00
3,300.0	14.58	200.20	3,213.1	-652.0	-253.9	699.4	0.00	0.00	0.00
3,400.0	14.58	200.20	3,309.9	-675.6	-262.6	724.6	0.00	0.00	0.00
<b>Wasatch</b>									
3,400.1	14.58	200.20	3,310.0	-675.7	-262.6	724.6	0.00	0.00	0.00
3,500.0	14.58	200.20	3,406.6	-699.3	-271.3	749.7	0.00	0.00	0.00
3,600.0	14.58	200.20	3,503.4	-722.9	-280.0	774.9	0.00	0.00	0.00
3,700.0	14.58	200.20	3,600.2	-746.5	-288.7	800.1	0.00	0.00	0.00
3,800.0	14.58	200.20	3,697.0	-770.1	-297.4	825.2	0.00	0.00	0.00
3,900.0	14.58	200.20	3,793.8	-793.8	-306.1	850.4	0.00	0.00	0.00
4,000.0	14.58	200.20	3,890.5	-817.4	-314.8	875.5	0.00	0.00	0.00
4,100.0	14.58	200.20	3,987.3	-841.0	-323.5	900.7	0.00	0.00	0.00
4,200.0	14.58	200.20	4,084.1	-864.7	-332.2	925.8	0.00	0.00	0.00
4,300.0	14.58	200.20	4,180.9	-888.3	-340.8	951.0	0.00	0.00	0.00
4,400.0	14.58	200.20	4,277.6	-911.9	-349.5	976.1	0.00	0.00	0.00

<b>Database:</b>	EDM 5000.1 Single User Db	<b>Local Co-ordinate Reference:</b>	Well BJU B26 FED 14A-26 496 - Slot BJU B26 FED 14A-26 496
<b>Company:</b>	Caerus Oil & Gas	<b>TVD Reference:</b>	RKB @ 8241.0usft (30')
<b>Project:</b>	Garfield County, CO	<b>MD Reference:</b>	RKB @ 8241.0usft (30')
<b>Site:</b>	BJU B26 496 Pad	<b>North Reference:</b>	True
<b>Well:</b>	BJU B26 FED 14A-26 496	<b>Survey Calculation Method:</b>	Minimum Curvature
<b>Wellbore:</b>	Wellbore #1		
<b>Design:</b>	Design #1		

## Planned Survey

Measured Depth (usft)	Inclination (°)	Azimuth (°)	Vertical Depth (usft)	+N/-S (usft)	+E/-W (usft)	Vertical Section (usft)	Dogleg Rate (°/100usft)	Build Rate (°/100usft)	Turn Rate (°/100usft)
4,500.0	14.58	200.20	4,374.4	-935.6	-358.2	1,001.3	0.00	0.00	0.00
4,600.0	14.58	200.20	4,471.2	-959.2	-366.9	1,026.4	0.00	0.00	0.00
4,700.0	14.58	200.20	4,568.0	-982.8	-375.6	1,051.6	0.00	0.00	0.00
4,800.0	14.58	200.20	4,664.8	-1,006.5	-384.3	1,076.7	0.00	0.00	0.00
4,900.0	14.58	200.20	4,761.5	-1,030.1	-393.0	1,101.9	0.00	0.00	0.00
5,000.0	14.58	200.20	4,858.3	-1,053.7	-401.7	1,127.1	0.00	0.00	0.00
5,100.0	14.58	200.20	4,955.1	-1,077.4	-410.4	1,152.2	0.00	0.00	0.00
5,200.0	14.58	200.20	5,051.9	-1,101.0	-419.1	1,177.4	0.00	0.00	0.00
5,300.0	14.58	200.20	5,148.7	-1,124.6	-427.8	1,202.5	0.00	0.00	0.00
5,400.0	14.58	200.20	5,245.4	-1,148.3	-436.5	1,227.7	0.00	0.00	0.00
5,500.0	14.58	200.20	5,342.2	-1,171.9	-445.2	1,252.8	0.00	0.00	0.00
5,600.0	14.58	200.20	5,439.0	-1,195.5	-453.9	1,278.0	0.00	0.00	0.00
5,700.0	14.58	200.20	5,535.8	-1,219.1	-462.6	1,303.1	0.00	0.00	0.00
5,800.0	14.58	200.20	5,632.5	-1,242.8	-471.3	1,328.3	0.00	0.00	0.00
<b>Wasatch G</b>									
5,880.0	14.58	200.20	5,710.0	-1,261.7	-478.2	1,348.4	0.00	0.00	0.00
5,900.0	14.58	200.20	5,729.3	-1,266.4	-480.0	1,353.4	0.00	0.00	0.00
6,000.0	14.58	200.20	5,826.1	-1,290.0	-488.7	1,378.6	0.00	0.00	0.00
6,100.0	14.58	200.20	5,922.9	-1,313.7	-497.3	1,403.7	0.00	0.00	0.00
<b>Fort Union</b>									
6,190.0	14.58	200.20	6,010.0	-1,334.9	-505.2	1,426.4	0.00	0.00	0.00
6,200.0	14.58	200.20	6,019.7	-1,337.3	-506.0	1,428.9	0.00	0.00	0.00
6,300.0	14.58	200.20	6,116.4	-1,360.9	-514.7	1,454.0	0.00	0.00	0.00
6,400.0	14.58	200.20	6,213.2	-1,384.6	-523.4	1,479.2	0.00	0.00	0.00
6,500.0	14.58	200.20	6,310.0	-1,408.2	-532.1	1,504.4	0.00	0.00	0.00
6,600.0	14.58	200.20	6,406.8	-1,431.8	-540.8	1,529.5	0.00	0.00	0.00
6,700.0	14.58	200.20	6,503.5	-1,455.5	-549.5	1,554.7	0.00	0.00	0.00
6,800.0	14.58	200.20	6,600.3	-1,479.1	-558.2	1,579.8	0.00	0.00	0.00
6,900.0	14.58	200.20	6,697.1	-1,502.7	-566.9	1,605.0	0.00	0.00	0.00
7,000.0	14.58	200.20	6,793.9	-1,526.4	-575.6	1,630.1	0.00	0.00	0.00
7,100.0	14.58	200.20	6,890.7	-1,550.0	-584.3	1,655.3	0.00	0.00	0.00
7,200.0	14.58	200.20	6,987.4	-1,573.6	-593.0	1,680.4	0.00	0.00	0.00
7,300.0	14.58	200.20	7,084.2	-1,597.2	-601.7	1,705.6	0.00	0.00	0.00
7,400.0	14.58	200.20	7,181.0	-1,620.9	-610.4	1,730.7	0.00	0.00	0.00
7,500.0	14.58	200.20	7,277.8	-1,644.5	-619.1	1,755.9	0.00	0.00	0.00
7,600.0	14.58	200.20	7,374.5	-1,668.1	-627.8	1,781.0	0.00	0.00	0.00
7,700.0	14.58	200.20	7,471.3	-1,691.8	-636.5	1,806.2	0.00	0.00	0.00
7,800.0	14.58	200.20	7,568.1	-1,715.4	-645.1	1,831.4	0.00	0.00	0.00
<b>Drop 3°/100'</b>									
7,817.6	14.58	200.20	7,585.1	-1,719.6	-646.7	1,835.8	0.00	0.00	0.00
7,900.0	12.11	200.20	7,665.3	-1,737.4	-653.2	1,854.8	3.00	-3.00	0.00
8,000.0	9.11	200.20	7,763.6	-1,754.7	-659.6	1,873.2	3.00	-3.00	0.00
8,100.0	6.11	200.20	7,862.7	-1,767.1	-664.2	1,886.4	3.00	-3.00	0.00
8,200.0	3.11	200.20	7,962.4	-1,774.7	-666.9	1,894.4	3.00	-3.00	0.00
<b>EOD @ Vertical / Build 1.5° / 100' - Ohio Creek / TOG</b>									
8,303.7	0.00	0.00	8,066.0	-1,777.3	-667.9	1,897.2	3.00	-3.00	0.00
<b>EOB @ 1.52° INC / 250.00° AZM</b>									
8,404.9	1.52	250.00	8,167.2	-1,777.8	-669.2	1,898.2	1.50	1.50	0.00
8,500.0	1.52	250.00	8,262.3	-1,778.6	-671.5	1,899.9	0.00	0.00	0.00
<b>Williams Fork</b>									
8,541.8	1.52	250.00	8,304.0	-1,779.0	-672.6	1,900.6	0.00	0.00	0.00
8,600.0	1.52	250.00	8,362.2	-1,779.5	-674.0	1,901.7	0.00	0.00	0.00

<b>Database:</b>	EDM 5000.1 Single User Db	<b>Local Co-ordinate Reference:</b>	Well BJU B26 FED 14A-26 496 - Slot BJU B26 FED 14A-26 496
<b>Company:</b>	Caerus Oil & Gas	<b>TVD Reference:</b>	RKB @ 8241.0usft (30')
<b>Project:</b>	Garfield County, CO	<b>MD Reference:</b>	RKB @ 8241.0usft (30')
<b>Site:</b>	BJU B26 496 Pad	<b>North Reference:</b>	True
<b>Well:</b>	BJU B26 FED 14A-26 496	<b>Survey Calculation Method:</b>	Minimum Curvature
<b>Wellbore:</b>	Wellbore #1		
<b>Design:</b>	Design #1		

Planned Survey									
Measured Depth (usft)	Inclination (°)	Azimuth (°)	Vertical Depth (usft)	+N/-S (usft)	+E/-W (usft)	Vertical Section (usft)	Dogleg Rate (°/100usft)	Build Rate (°/100usft)	Turn Rate (°/100usft)
8,700.0	1.52	250.00	8,462.2	-1,780.4	-676.5	1,903.5	0.00	0.00	0.00
8,800.0	1.52	250.00	8,562.2	-1,781.3	-679.0	1,905.3	0.00	0.00	0.00
8,900.0	1.52	250.00	8,662.1	-1,782.3	-681.5	1,907.1	0.00	0.00	0.00
9,000.0	1.52	250.00	8,762.1	-1,783.2	-684.0	1,908.9	0.00	0.00	0.00
9,100.0	1.52	250.00	8,862.0	-1,784.1	-686.5	1,910.7	0.00	0.00	0.00
9,200.0	1.52	250.00	8,962.0	-1,785.0	-689.0	1,912.5	0.00	0.00	0.00
9,300.0	1.52	250.00	9,062.0	-1,785.9	-691.5	1,914.3	0.00	0.00	0.00
9,400.0	1.52	250.00	9,161.9	-1,786.8	-694.0	1,916.1	0.00	0.00	0.00
9,500.0	1.52	250.00	9,261.9	-1,787.7	-696.4	1,917.9	0.00	0.00	0.00
9,600.0	1.52	250.00	9,361.9	-1,788.6	-698.9	1,919.7	0.00	0.00	0.00
9,700.0	1.52	250.00	9,461.8	-1,789.5	-701.4	1,921.5	0.00	0.00	0.00
9,800.0	1.52	250.00	9,561.8	-1,790.4	-703.9	1,923.3	0.00	0.00	0.00
9,900.0	1.52	250.00	9,661.8	-1,791.3	-706.4	1,925.1	0.00	0.00	0.00
10,000.0	1.52	250.00	9,761.7	-1,792.2	-708.9	1,926.9	0.00	0.00	0.00
10,100.0	1.52	250.00	9,861.7	-1,793.1	-711.4	1,928.7	0.00	0.00	0.00
10,200.0	1.52	250.00	9,961.7	-1,794.0	-713.9	1,930.5	0.00	0.00	0.00
10,300.0	1.52	250.00	10,061.6	-1,794.9	-716.4	1,932.3	0.00	0.00	0.00
10,400.0	1.52	250.00	10,161.6	-1,795.8	-718.9	1,934.1	0.00	0.00	0.00
10,500.0	1.52	250.00	10,261.6	-1,796.8	-721.3	1,935.9	0.00	0.00	0.00
10,600.0	1.52	250.00	10,361.5	-1,797.7	-723.8	1,937.7	0.00	0.00	0.00
10,700.0	1.52	250.00	10,461.5	-1,798.6	-726.3	1,939.5	0.00	0.00	0.00
10,800.0	1.52	250.00	10,561.4	-1,799.5	-728.8	1,941.3	0.00	0.00	0.00
10,900.0	1.52	250.00	10,661.4	-1,800.4	-731.3	1,943.1	0.00	0.00	0.00
11,000.0	1.52	250.00	10,761.4	-1,801.3	-733.8	1,944.9	0.00	0.00	0.00
11,100.0	1.52	250.00	10,861.3	-1,802.2	-736.3	1,946.7	0.00	0.00	0.00
11,200.0	1.52	250.00	10,961.3	-1,803.1	-738.8	1,948.5	0.00	0.00	0.00
11,300.0	1.52	250.00	11,061.3	-1,804.0	-741.3	1,950.3	0.00	0.00	0.00
11,400.0	1.52	250.00	11,161.2	-1,804.9	-743.8	1,952.1	0.00	0.00	0.00
<b>Cameo</b>									
11,427.8	1.52	250.00	11,189.0	-1,805.2	-744.5	1,952.6	0.00	0.00	0.00
11,500.0	1.52	250.00	11,261.2	-1,805.8	-746.2	1,953.9	0.00	0.00	0.00
11,600.0	1.52	250.00	11,361.2	-1,806.7	-748.7	1,955.7	0.00	0.00	0.00
11,700.0	1.52	250.00	11,461.1	-1,807.6	-751.2	1,957.5	0.00	0.00	0.00
11,800.0	1.52	250.00	11,561.1	-1,808.5	-753.7	1,959.3	0.00	0.00	0.00
11,900.0	1.52	250.00	11,661.1	-1,809.4	-756.2	1,961.1	0.00	0.00	0.00
<b>Rollins</b>									
11,927.9	1.52	250.00	11,689.0	-1,809.7	-756.9	1,961.6	0.00	0.00	0.00
12,000.0	1.52	250.00	11,761.0	-1,810.4	-758.7	1,962.9	0.00	0.00	0.00
12,100.0	1.52	250.00	11,861.0	-1,811.3	-761.2	1,964.7	0.00	0.00	0.00
<b>TD @ 12128.0' MD / 11889.0' TVD</b>									
12,128.0	1.52	250.00	11,889.0	-1,811.5	-761.9	1,965.2	0.00	0.00	0.00

<b>Database:</b>	EDM 5000.1 Single User Db	<b>Local Co-ordinate Reference:</b>	Well BJU B26 FED 14A-26 496 - Slot BJU B26 FED 14A-26 496
<b>Company:</b>	Caerus Oil & Gas	<b>TVD Reference:</b>	RKB @ 8241.0usft (30')
<b>Project:</b>	Garfield County, CO	<b>MD Reference:</b>	RKB @ 8241.0usft (30')
<b>Site:</b>	BJU B26 496 Pad	<b>North Reference:</b>	True
<b>Well:</b>	BJU B26 FED 14A-26 496	<b>Survey Calculation Method:</b>	Minimum Curvature
<b>Wellbore:</b>	Wellbore #1		
<b>Design:</b>	Design #1		

#### Design Targets

Target Name - hit/miss target - Shape	Dip Angle (°)	Dip Dir. (°)	TVD (usft)	+N/-S (usft)	+E/-W (usft)	Northing (usft)	Easting (usft)	Latitude	Longitude
14A-26 - OHCR - plan hits target center - Ellipse (radii L100.0 W50.0 on 250.00 azi)	0.00	0.00	8,066.0	-1,777.3	-667.9	14,419,527.59	2,445,222.93	39.672240	-108.140139
14A-26 - PBHL - plan hits target center - Point	0.00	0.00	11,889.0	-1,811.5	-761.9	14,419,490.40	2,445,130.10	39.672146	-108.140473

#### Formations

Measured Depth (usft)	Vertical Depth (usft)	Name	Lithology	Dip (°)	Dip Direction (°)
3,400.1	3,310.0	Wasatch			
5,880.0	5,710.0	Wasatch G			
6,190.0	6,010.0	Fort Union			
8,303.7	8,066.0	Ohio Creek / TOG			
8,541.8	8,304.0	Williams Fork			
11,427.8	11,189.0	Cameo			
11,927.9	11,689.0	Rollins			

#### Plan Annotations

Measured Depth (usft)	Vertical Depth (usft)	Local Coordinates		Comment
		+N/-S (usft)	+E/-W (usft)	
250.0	250.0	0.0	0.0	Build 3°/100'
416.7	416.5	-4.2	-6.0	EOB @ 5.00° INC / 235.00° AZM / Build 3°/100'
778.4	772.7	-56.1	-34.7	EOB @ 14.58° INC / 200.20° AZM
7,817.6	7,585.1	-1,719.6	-646.7	Drop 3°/100'
8,303.7	8,066.0	-1,777.3	-667.9	EOD @ Vertical / Build 1.5° / 100'
8,404.9	8,167.2	-1,777.8	-669.2	EOB @ 1.52° INC / 250.00° AZM
12,128.0	11,889.0	-1,811.5	-761.9	TD @ 12128.0' MD / 11889.0' TVD