

Project: Garfield County, CO
 Site: BJU B26 496 Pad
 Well: BJU B26 FED 13D-26 496
 Wellbore: Wellbore #1
 Design: Design #1
 Latitude: 39.677138
 Longitude: -108.137769
 Ground Level: 8211.0
 RKB @ 8241.0usft (30')

PROJECT DETAILS: Garfield County, CO

Geodetic System: Universal Transverse Mercator (US Survey Feet)
 Datum: NAD 1927 - Western US
 Ellipsoid: Clarke 1866
 Zone: Zone 12N (114 W to 108 W)
 System Datum: Mean Sea Level

REFERENCE INFORMATION

Vertical (TVD) Reference: RKB @ 8241.0usft (30')
 Section (VS) Reference: Slot - BJU B26 FED 13D-26 496(0.0N, 0.0E)
 Measured Depth Reference: RKB @ 8241.0usft (30')
 Calculation Method: Minimum Curvature

SECTION DETAILS

MD	Inc	Azi	TVD	+N/-S	+E/-W	Dleg	TFace	Vsect	Annotation
0.0	0.00	0.00	0.0	0.0	0.0	0.00	0.00	0.0	
260.0	0.00	0.00	260.0	0.0	0.0	0.00	0.00	0.0	Build 3°/100'
426.7	5.00	260.00	426.5	-1.3	-7.2	3.00	260.00	4.2	EOD @ 5.00° INC / 260.00° AZM / Build 3°/100'
787.3	12.67	202.59	783.0	-40.6	-37.9	3.00	-79.98	53.1	EOD @ 12.67° INC / 202.59° AZM
7820.6	12.67	202.59	7645.0	-1465.1	-630.6	0.00	0.00	1593.6	Drop 3°/100'
8243.0	0.00	0.00	8064.0	-1508.1	-648.4	3.00	180.00	1640.1	EOD @ Vertical / Build 1.5° / 100'
8343.5	1.51	250.00	8164.5	-1508.5	-649.7	1.50	250.00	1641.0	EOD @ 1.51° INC / 250.00° AZM
12094.3	1.51	250.00	11914.0	-1542.3	-742.4	0.00	0.00	1711.7	TD @ 12094.3' MD / 11914.0' TVD

FORMATION TOP DETAILS

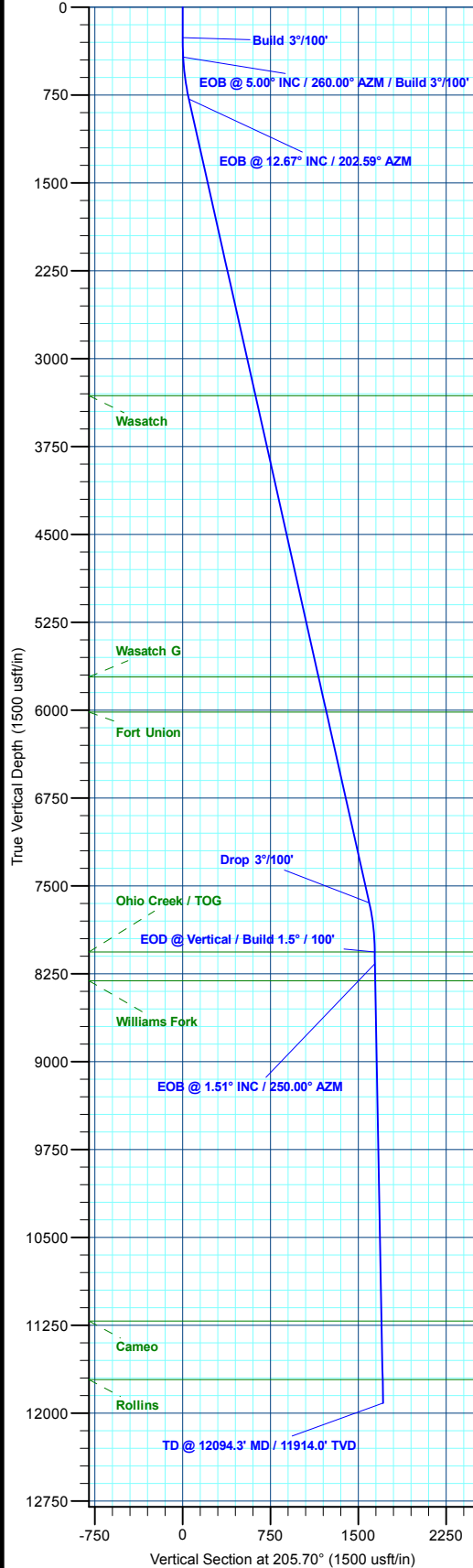
TVDPath	MDPath	Formation
3317.0	3384.5	Wasatch
5717.0	5844.4	Wasatch G
6017.0	6151.9	Fort Union
8064.0	8243.0	Ohio Creek / TOG
8311.0	8490.0	Williams Fork
11214.0	11394.0	Cameo
11714.0	11894.2	Rollins

DESIGN TARGET DETAILS

Name	TVD	+N/-S	+E/-W	Northing	Easting	Latitude	Longitude
13D-26 - OHCR	8064.0	-1508.1	-648.4	14419804.79	2445233.13	39.672999	-108.140072
13D-26 - PBHL	11914.0	-1542.3	-742.4	14419767.60	2445140.30	39.672905	-108.140405

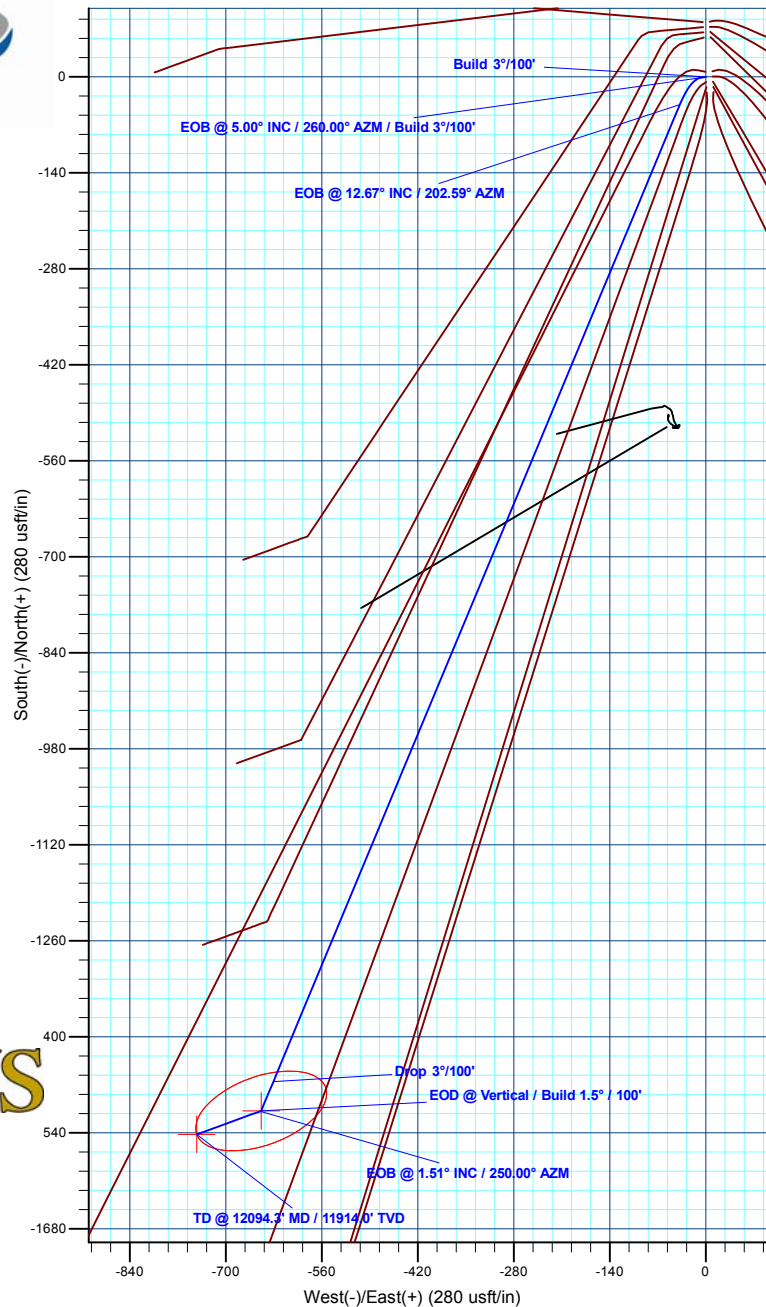
WELL DETAILS: BJU B26 FED 13D-26 496

+N/-S	+E/-W	Ground Level	Easting	Latitude	Longitude
0.0	0.0	8211.0	14421332.80	2445833.10	39.677138
					-108.137769



T M Azimuths to True North
 Magnetic North: 9.42°

Magnetic Field
 Strength: 51173.2nT
 Dip Angle: 65.82°
 Date: 8/3/2020
 Model: HDGM2020



Plan: Design #1 (BJU B26 FED 13D-26 496/Wellbore #1)

Created By: Will Jircik Date: 11:19, August 06 2020



Caerus Oil & Gas

Garfield County, CO

BJU B26 496 Pad

BJU B26 FED 13D-26 496 - Slot BJU B26 FED 13D-26 496

Wellbore #1

Plan: Design #1

QES Well Planning Report

06 August, 2020



Database:	EDM 5000.1 Single User Db	Local Co-ordinate Reference:	Well BJU B26 FED 13D-26 496 - Slot BJU B26 FED 13D-26 496
Company:	Caerus Oil & Gas	TVD Reference:	RKB @ 8241.0usft (30')
Project:	Garfield County, CO	MD Reference:	RKB @ 8241.0usft (30')
Site:	BJU B26 496 Pad	North Reference:	True
Well:	BJU B26 FED 13D-26 496	Survey Calculation Method:	Minimum Curvature
Wellbore:	Wellbore #1		
Design:	Design #1		

Project	Garfield County, CO		
Map System:	Universal Transverse Mercator (US Survey Fee	System Datum:	Mean Sea Level
Geo Datum:	NAD 1927 - Western US		
Map Zone:	Zone 12N (114 W to 108 W)		

Site	BJU B26 496 Pad				
Site Position:		Northing:	14,421,469.70 usft	Latitude:	39.677515
From:	Map	Easting:	2,445,821.30 usft	Longitude:	-108.137796
Position Uncertainty:	0.0 usft	Slot Radius:	13-3/16 "	Grid Convergence:	1.83 °

Well	BJU B26 FED 13D-26 496 - Slot BJU B26 FED 13D-26 496					
Well Position	+N/-S	-137.2 usft	Northing:	14,421,332.80 usft	Latitude:	39.677138
	+E/-W	7.4 usft	Easting:	2,445,833.10 usft	Longitude:	-108.137769
Position Uncertainty		0.0 usft	Wellhead Elevation:		Ground Level:	8,211.0 usft

Wellbore	Wellbore #1				
Magnetics	Model Name	Sample Date	Declination (°)	Dip Angle (°)	Field Strength (nT)
	HDGM2020	8/3/2020	9.42	65.82	51,173.20000000

Design	Design #1			
Audit Notes:				
Version:	Phase:	PLAN	Tie On Depth:	0.0
Vertical Section:	Depth From (TVD) (usft)	+N/-S (usft)	+E/-W (usft)	Direction (°)
	0.0	0.0	0.0	205.70

Plan Sections										
Measured Depth (usft)	Inclination (°)	Azimuth (°)	Vertical Depth (usft)	+N/-S (usft)	+E/-W (usft)	Dogleg Rate (°/100usft)	Build Rate (°/100usft)	Turn Rate (°/100usft)	TFO (°)	Target
0.0	0.00	0.00	0.0	0.0	0.0	0.00	0.00	0.00	0.00	
260.0	0.00	0.00	260.0	0.0	0.0	0.00	0.00	0.00	0.00	
426.7	5.00	260.00	426.5	-1.3	-7.2	3.00	3.00	0.00	260.00	
787.3	12.67	202.59	783.0	-40.6	-37.9	3.00	2.13	-15.92	-79.98	
7,820.6	12.67	202.59	7,645.0	-1,465.1	-630.6	0.00	0.00	0.00	0.00	
8,243.0	0.00	0.00	8,064.0	-1,508.1	-648.4	3.00	-3.00	0.00	180.00	13D-26 - OHCR
8,343.5	1.51	250.00	8,164.5	-1,508.5	-649.7	1.50	1.50	-109.45	250.00	
12,094.3	1.51	250.00	11,914.0	-1,542.3	-742.4	0.00	0.00	0.00	0.00	13D-26 - PBHL

Database:	EDM 5000.1 Single User Db	Local Co-ordinate Reference:	Well BJU B26 FED 13D-26 496 - Slot BJU B26 FED 13D-26 496
Company:	Caerus Oil & Gas	TVD Reference:	RKB @ 8241.0usft (30')
Project:	Garfield County, CO	MD Reference:	RKB @ 8241.0usft (30')
Site:	BJU B26 496 Pad	North Reference:	True
Well:	BJU B26 FED 13D-26 496	Survey Calculation Method:	Minimum Curvature
Wellbore:	Wellbore #1		
Design:	Design #1		

Planned Survey										
Measured Depth (usft)	Inclination (°)	Azimuth (°)	Vertical Depth (usft)	+N/-S (usft)	+E/-W (usft)	Vertical Section (usft)	Dogleg Rate (°/100usft)	Build Rate (°/100usft)	Turn Rate (°/100usft)	
0.0	0.00	0.00	0.0	0.0	0.0	0.0	0.00	0.00	0.00	0.00
100.0	0.00	0.00	100.0	0.0	0.0	0.0	0.00	0.00	0.00	0.00
200.0	0.00	0.00	200.0	0.0	0.0	0.0	0.00	0.00	0.00	0.00
Build 3°/100'										
260.0	0.00	0.00	260.0	0.0	0.0	0.0	0.00	0.00	0.00	0.00
300.0	1.20	260.00	300.0	-0.1	-0.4	0.2	3.00	3.00	0.00	0.00
400.0	4.20	260.00	399.9	-0.9	-5.1	3.0	3.00	3.00	0.00	0.00
EOB @ 5.00° INC / 260.00° AZM / Build 3°/100'										
426.7	5.00	260.00	426.5	-1.3	-7.2	4.2	3.00	3.00	0.00	0.00
500.0	5.80	238.04	499.5	-3.8	-13.4	9.2	3.00	1.09	-29.95	-29.95
600.0	7.81	218.96	598.8	-11.7	-22.0	20.1	3.00	2.01	-19.08	-19.08
700.0	10.31	208.32	697.5	-24.9	-30.5	35.7	3.00	2.50	-10.64	-10.64
EOB @ 12.67° INC / 202.59° AZM										
787.3	12.67	202.59	783.0	-40.6	-37.9	53.1	3.00	2.70	-6.57	-6.57
800.0	12.67	202.59	795.5	-43.2	-39.0	55.8	0.00	0.00	0.00	0.00
900.0	12.67	202.59	893.0	-63.5	-47.4	77.7	0.00	0.00	0.00	0.00
1,000.0	12.67	202.59	990.6	-83.7	-55.8	99.6	0.00	0.00	0.00	0.00
1,100.0	12.67	202.59	1,088.2	-104.0	-64.3	121.6	0.00	0.00	0.00	0.00
1,200.0	12.67	202.59	1,185.7	-124.2	-72.7	143.5	0.00	0.00	0.00	0.00
1,300.0	12.67	202.59	1,283.3	-144.5	-81.1	165.4	0.00	0.00	0.00	0.00
1,400.0	12.67	202.59	1,380.8	-164.7	-89.5	187.3	0.00	0.00	0.00	0.00
1,500.0	12.67	202.59	1,478.4	-185.0	-98.0	209.2	0.00	0.00	0.00	0.00
1,600.0	12.67	202.59	1,576.0	-205.2	-106.4	231.1	0.00	0.00	0.00	0.00
1,700.0	12.67	202.59	1,673.5	-225.5	-114.8	253.0	0.00	0.00	0.00	0.00
1,800.0	12.67	202.59	1,771.1	-245.7	-123.3	274.9	0.00	0.00	0.00	0.00
1,900.0	12.67	202.59	1,868.7	-266.0	-131.7	296.8	0.00	0.00	0.00	0.00
2,000.0	12.67	202.59	1,966.2	-286.2	-140.1	318.7	0.00	0.00	0.00	0.00
2,100.0	12.67	202.59	2,063.8	-306.5	-148.5	340.6	0.00	0.00	0.00	0.00
2,200.0	12.67	202.59	2,161.4	-326.8	-157.0	362.5	0.00	0.00	0.00	0.00
2,300.0	12.67	202.59	2,258.9	-347.0	-165.4	384.4	0.00	0.00	0.00	0.00
2,400.0	12.67	202.59	2,356.5	-367.3	-173.8	406.3	0.00	0.00	0.00	0.00
2,500.0	12.67	202.59	2,454.1	-387.5	-182.2	428.2	0.00	0.00	0.00	0.00
2,600.0	12.67	202.59	2,551.6	-407.8	-190.7	450.1	0.00	0.00	0.00	0.00
2,700.0	12.67	202.59	2,649.2	-428.0	-199.1	472.0	0.00	0.00	0.00	0.00
2,800.0	12.67	202.59	2,746.7	-448.3	-207.5	493.9	0.00	0.00	0.00	0.00
2,900.0	12.67	202.59	2,844.3	-468.5	-215.9	515.8	0.00	0.00	0.00	0.00
3,000.0	12.67	202.59	2,941.9	-488.8	-224.4	537.7	0.00	0.00	0.00	0.00
3,100.0	12.67	202.59	3,039.4	-509.0	-232.8	559.6	0.00	0.00	0.00	0.00
3,200.0	12.67	202.59	3,137.0	-529.3	-241.2	581.5	0.00	0.00	0.00	0.00
3,300.0	12.67	202.59	3,234.6	-549.5	-249.6	603.4	0.00	0.00	0.00	0.00
Wasatch										
3,384.5	12.67	202.59	3,317.0	-566.7	-256.8	622.0	0.00	0.00	0.00	0.00
3,400.0	12.67	202.59	3,332.1	-569.8	-258.1	625.3	0.00	0.00	0.00	0.00
3,500.0	12.67	202.59	3,429.7	-590.1	-266.5	647.3	0.00	0.00	0.00	0.00
3,600.0	12.67	202.59	3,527.3	-610.3	-274.9	669.2	0.00	0.00	0.00	0.00
3,700.0	12.67	202.59	3,624.8	-630.6	-283.3	691.1	0.00	0.00	0.00	0.00
3,800.0	12.67	202.59	3,722.4	-650.8	-291.8	713.0	0.00	0.00	0.00	0.00
3,900.0	12.67	202.59	3,820.0	-671.1	-300.2	734.9	0.00	0.00	0.00	0.00
4,000.0	12.67	202.59	3,917.5	-691.3	-308.6	756.8	0.00	0.00	0.00	0.00
4,100.0	12.67	202.59	4,015.1	-711.6	-317.1	778.7	0.00	0.00	0.00	0.00
4,200.0	12.67	202.59	4,112.6	-731.8	-325.5	800.6	0.00	0.00	0.00	0.00
4,300.0	12.67	202.59	4,210.2	-752.1	-333.9	822.5	0.00	0.00	0.00	0.00
4,400.0	12.67	202.59	4,307.8	-772.3	-342.3	844.4	0.00	0.00	0.00	0.00

Database:	EDM 5000.1 Single User Db	Local Co-ordinate Reference:	Well BJU B26 FED 13D-26 496 - Slot BJU B26 FED 13D-26 496
Company:	Caerus Oil & Gas	TVD Reference:	RKB @ 8241.0usft (30')
Project:	Garfield County, CO	MD Reference:	RKB @ 8241.0usft (30')
Site:	BJU B26 496 Pad	North Reference:	True
Well:	BJU B26 FED 13D-26 496	Survey Calculation Method:	Minimum Curvature
Wellbore:	Wellbore #1		
Design:	Design #1		

Planned Survey

Measured Depth (usft)	Inclination (°)	Azimuth (°)	Vertical Depth (usft)	+N/-S (usft)	+E/-W (usft)	Vertical Section (usft)	Dogleg Rate (°/100usft)	Build Rate (°/100usft)	Turn Rate (°/100usft)
4,500.0	12.67	202.59	4,405.3	-792.6	-350.8	866.3	0.00	0.00	0.00
4,600.0	12.67	202.59	4,502.9	-812.8	-359.2	888.2	0.00	0.00	0.00
4,700.0	12.67	202.59	4,600.5	-833.1	-367.6	910.1	0.00	0.00	0.00
4,800.0	12.67	202.59	4,698.0	-853.4	-376.0	932.0	0.00	0.00	0.00
4,900.0	12.67	202.59	4,795.6	-873.6	-384.5	953.9	0.00	0.00	0.00
5,000.0	12.67	202.59	4,893.2	-893.9	-392.9	975.8	0.00	0.00	0.00
5,100.0	12.67	202.59	4,990.7	-914.1	-401.3	997.7	0.00	0.00	0.00
5,200.0	12.67	202.59	5,088.3	-934.4	-409.7	1,019.6	0.00	0.00	0.00
5,300.0	12.67	202.59	5,185.9	-954.6	-418.2	1,041.5	0.00	0.00	0.00
5,400.0	12.67	202.59	5,283.4	-974.9	-426.6	1,063.4	0.00	0.00	0.00
5,500.0	12.67	202.59	5,381.0	-995.1	-435.0	1,085.3	0.00	0.00	0.00
5,600.0	12.67	202.59	5,478.5	-1,015.4	-443.4	1,107.2	0.00	0.00	0.00
5,700.0	12.67	202.59	5,576.1	-1,035.6	-451.9	1,129.1	0.00	0.00	0.00
5,800.0	12.67	202.59	5,673.7	-1,055.9	-460.3	1,151.0	0.00	0.00	0.00
Wasatch G									
5,844.4	12.67	202.59	5,717.0	-1,064.9	-464.0	1,160.8	0.00	0.00	0.00
5,900.0	12.67	202.59	5,771.2	-1,076.1	-468.7	1,173.0	0.00	0.00	0.00
6,000.0	12.67	202.59	5,868.8	-1,096.4	-477.1	1,194.9	0.00	0.00	0.00
6,100.0	12.67	202.59	5,966.4	-1,116.7	-485.6	1,216.8	0.00	0.00	0.00
Fort Union									
6,151.9	12.67	202.59	6,017.0	-1,127.2	-489.9	1,228.1	0.00	0.00	0.00
6,200.0	12.67	202.59	6,063.9	-1,136.9	-494.0	1,238.7	0.00	0.00	0.00
6,300.0	12.67	202.59	6,161.5	-1,157.2	-502.4	1,260.6	0.00	0.00	0.00
6,400.0	12.67	202.59	6,259.1	-1,177.4	-510.9	1,282.5	0.00	0.00	0.00
6,500.0	12.67	202.59	6,356.6	-1,197.7	-519.3	1,304.4	0.00	0.00	0.00
6,600.0	12.67	202.59	6,454.2	-1,217.9	-527.7	1,326.3	0.00	0.00	0.00
6,700.0	12.67	202.59	6,551.8	-1,238.2	-536.1	1,348.2	0.00	0.00	0.00
6,800.0	12.67	202.59	6,649.3	-1,258.4	-544.6	1,370.1	0.00	0.00	0.00
6,900.0	12.67	202.59	6,746.9	-1,278.7	-553.0	1,392.0	0.00	0.00	0.00
7,000.0	12.67	202.59	6,844.4	-1,298.9	-561.4	1,413.9	0.00	0.00	0.00
7,100.0	12.67	202.59	6,942.0	-1,319.2	-569.8	1,435.8	0.00	0.00	0.00
7,200.0	12.67	202.59	7,039.6	-1,339.4	-578.3	1,457.7	0.00	0.00	0.00
7,300.0	12.67	202.59	7,137.1	-1,359.7	-586.7	1,479.6	0.00	0.00	0.00
7,400.0	12.67	202.59	7,234.7	-1,380.0	-595.1	1,501.5	0.00	0.00	0.00
7,500.0	12.67	202.59	7,332.3	-1,400.2	-603.5	1,523.4	0.00	0.00	0.00
7,600.0	12.67	202.59	7,429.8	-1,420.5	-612.0	1,545.3	0.00	0.00	0.00
7,700.0	12.67	202.59	7,527.4	-1,440.7	-620.4	1,567.2	0.00	0.00	0.00
7,800.0	12.67	202.59	7,625.0	-1,461.0	-628.8	1,589.1	0.00	0.00	0.00
Drop 3°/100'									
7,820.6	12.67	202.59	7,645.0	-1,465.1	-630.6	1,593.6	0.00	0.00	0.00
7,900.0	10.29	202.59	7,722.9	-1,479.7	-636.6	1,609.4	3.00	-3.00	0.00
8,000.0	7.29	202.59	7,821.7	-1,493.8	-642.5	1,624.7	3.00	-3.00	0.00
8,100.0	4.29	202.59	7,921.2	-1,503.1	-646.4	1,634.8	3.00	-3.00	0.00
8,200.0	1.29	202.59	8,021.0	-1,507.6	-648.2	1,639.6	3.00	-3.00	0.00
EOD @ Vertical / Build 1.5° / 100' - Ohio Creek / TOG									
8,243.0	0.00	0.00	8,064.0	-1,508.1	-648.4	1,640.1	3.00	-3.00	0.00
8,300.0	0.86	250.00	8,121.0	-1,508.2	-648.8	1,640.4	1.50	1.50	0.00
EOB @ 1.51° INC / 250.00° AZM									
8,343.5	1.51	250.00	8,164.5	-1,508.5	-649.7	1,641.0	1.50	1.50	0.00
8,400.0	1.51	250.00	8,221.0	-1,509.0	-651.1	1,642.1	0.00	0.00	0.00
Williams Fork									
8,490.0	1.51	250.00	8,311.0	-1,509.9	-653.3	1,643.8	0.00	0.00	0.00

Database:	EDM 5000.1 Single User Db	Local Co-ordinate Reference:	Well BJU B26 FED 13D-26 496 - Slot BJU B26 FED 13D-26 496
Company:	Caerus Oil & Gas	TVD Reference:	RKB @ 8241.0usft (30')
Project:	Garfield County, CO	MD Reference:	RKB @ 8241.0usft (30')
Site:	BJU B26 496 Pad	North Reference:	True
Well:	BJU B26 FED 13D-26 496	Survey Calculation Method:	Minimum Curvature
Wellbore:	Wellbore #1		
Design:	Design #1		

Planned Survey

Measured Depth (usft)	Inclination (°)	Azimuth (°)	Vertical Depth (usft)	+N/-S (usft)	+E/-W (usft)	Vertical Section (usft)	Dogleg Rate (°/100usft)	Build Rate (°/100usft)	Turn Rate (°/100usft)
8,500.0	1.51	250.00	8,321.0	-1,509.9	-653.5	1,644.0	0.00	0.00	0.00
8,600.0	1.51	250.00	8,420.9	-1,510.8	-656.0	1,645.9	0.00	0.00	0.00
8,700.0	1.51	250.00	8,520.9	-1,511.7	-658.5	1,647.8	0.00	0.00	0.00
8,800.0	1.51	250.00	8,620.9	-1,512.6	-660.9	1,649.6	0.00	0.00	0.00
8,900.0	1.51	250.00	8,720.8	-1,513.5	-663.4	1,651.5	0.00	0.00	0.00
9,000.0	1.51	250.00	8,820.8	-1,514.4	-665.9	1,653.4	0.00	0.00	0.00
9,100.0	1.51	250.00	8,920.7	-1,515.3	-668.4	1,655.3	0.00	0.00	0.00
9,200.0	1.51	250.00	9,020.7	-1,516.2	-670.8	1,657.2	0.00	0.00	0.00
9,300.0	1.51	250.00	9,120.7	-1,517.1	-673.3	1,659.1	0.00	0.00	0.00
9,400.0	1.51	250.00	9,220.6	-1,518.0	-675.8	1,660.9	0.00	0.00	0.00
9,500.0	1.51	250.00	9,320.6	-1,518.9	-678.3	1,662.8	0.00	0.00	0.00
9,600.0	1.51	250.00	9,420.6	-1,519.8	-680.7	1,664.7	0.00	0.00	0.00
9,700.0	1.51	250.00	9,520.5	-1,520.7	-683.2	1,666.6	0.00	0.00	0.00
9,800.0	1.51	250.00	9,620.5	-1,521.6	-685.7	1,668.5	0.00	0.00	0.00
9,900.0	1.51	250.00	9,720.5	-1,522.5	-688.1	1,670.4	0.00	0.00	0.00
10,000.0	1.51	250.00	9,820.4	-1,523.4	-690.6	1,672.2	0.00	0.00	0.00
10,100.0	1.51	250.00	9,920.4	-1,524.3	-693.1	1,674.1	0.00	0.00	0.00
10,200.0	1.51	250.00	10,020.4	-1,525.2	-695.6	1,676.0	0.00	0.00	0.00
10,300.0	1.51	250.00	10,120.3	-1,526.1	-698.0	1,677.9	0.00	0.00	0.00
10,400.0	1.51	250.00	10,220.3	-1,527.0	-700.5	1,679.8	0.00	0.00	0.00
10,500.0	1.51	250.00	10,320.3	-1,527.9	-703.0	1,681.6	0.00	0.00	0.00
10,600.0	1.51	250.00	10,420.2	-1,528.8	-705.4	1,683.5	0.00	0.00	0.00
10,700.0	1.51	250.00	10,520.2	-1,529.7	-707.9	1,685.4	0.00	0.00	0.00
10,800.0	1.51	250.00	10,620.2	-1,530.6	-710.4	1,687.3	0.00	0.00	0.00
10,900.0	1.51	250.00	10,720.1	-1,531.5	-712.9	1,689.2	0.00	0.00	0.00
11,000.0	1.51	250.00	10,820.1	-1,532.4	-715.3	1,691.1	0.00	0.00	0.00
11,100.0	1.51	250.00	10,920.1	-1,533.3	-717.8	1,692.9	0.00	0.00	0.00
11,200.0	1.51	250.00	11,020.0	-1,534.2	-720.3	1,694.8	0.00	0.00	0.00
11,300.0	1.51	250.00	11,120.0	-1,535.1	-722.8	1,696.7	0.00	0.00	0.00
Cameo									
11,394.0	1.51	250.00	11,214.0	-1,536.0	-725.1	1,698.5	0.00	0.00	0.00
11,400.0	1.51	250.00	11,220.0	-1,536.0	-725.2	1,698.6	0.00	0.00	0.00
11,500.0	1.51	250.00	11,319.9	-1,536.9	-727.7	1,700.5	0.00	0.00	0.00
11,600.0	1.51	250.00	11,419.9	-1,537.8	-730.2	1,702.4	0.00	0.00	0.00
11,700.0	1.51	250.00	11,519.8	-1,538.7	-732.6	1,704.2	0.00	0.00	0.00
11,800.0	1.51	250.00	11,619.8	-1,539.6	-735.1	1,706.1	0.00	0.00	0.00
Rollins									
11,894.2	1.51	250.00	11,714.0	-1,540.5	-737.4	1,707.9	0.00	0.00	0.00
11,900.0	1.51	250.00	11,719.8	-1,540.5	-737.6	1,708.0	0.00	0.00	0.00
12,000.0	1.51	250.00	11,819.7	-1,541.4	-740.1	1,709.9	0.00	0.00	0.00
TD @ 12094.3' MD / 11914.0' TVD									
12,094.3	1.51	250.00	11,914.0	-1,542.3	-742.4	1,711.7	0.00	0.00	0.00

Database:	EDM 5000.1 Single User Db	Local Co-ordinate Reference:	Well BJU B26 FED 13D-26 496 - Slot BJU B26 FED 13D-26 496
Company:	Caerus Oil & Gas	TVD Reference:	RKB @ 8241.0usft (30')
Project:	Garfield County, CO	MD Reference:	RKB @ 8241.0usft (30')
Site:	BJU B26 496 Pad	North Reference:	True
Well:	BJU B26 FED 13D-26 496	Survey Calculation Method:	Minimum Curvature
Wellbore:	Wellbore #1		
Design:	Design #1		

Design Targets

Target Name	Dip Angle (°)	Dip Dir. (°)	TVD (usft)	+N/-S (usft)	+E/-W (usft)	Northing (usft)	Easting (usft)	Latitude	Longitude
13D-26 - OHCR - hit/miss target - Shape	0.00	0.00	8,064.0	-1,508.1	-648.4	14,419,804.79	2,445,233.13	39.672999	-108.140072
- plan hits target center - Ellipse (radii L100.0 W50.0 on 250.00 azi)									
13D-26 - PBHL - plan hits target center - Point	0.00	0.00	11,914.0	-1,542.3	-742.4	14,419,767.60	2,445,140.30	39.672906	-108.140406

Formations

Measured Depth (usft)	Vertical Depth (usft)	Name	Lithology	Dip (°)	Dip Direction (°)
3,384.5	3,317.0	Wasatch			
5,844.4	5,717.0	Wasatch G			
6,151.9	6,017.0	Fort Union			
8,243.0	8,064.0	Ohio Creek / TOG			
8,490.0	8,311.0	Williams Fork			
11,394.0	11,214.0	Cameo			
11,894.2	11,714.0	Rollins			

Plan Annotations

Measured Depth (usft)	Vertical Depth (usft)	Local Coordinates		Comment
		+N/-S (usft)	+E/-W (usft)	
260.0	260.0	0.0	0.0	Build 3°/100'
426.7	426.5	-1.3	-7.2	EOB @ 5.00° INC / 260.00° AZM / Build 3°/100'
787.3	783.0	-40.6	-37.9	EOB @ 12.67° INC / 202.59° AZM
7,820.6	7,645.0	-1,465.1	-630.6	Drop 3°/100'
8,243.0	8,064.0	-1,508.1	-648.4	EOD @ Vertical / Build 1.5° / 100'
8,343.5	8,164.5	-1,508.5	-649.7	EOB @ 1.51° INC / 250.00° AZM
12,094.3	11,914.0	-1,542.3	-742.4	TD @ 12094.3' MD / 11914.0' TVD