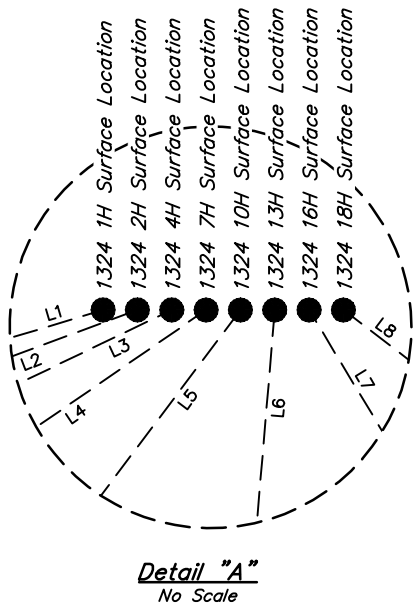
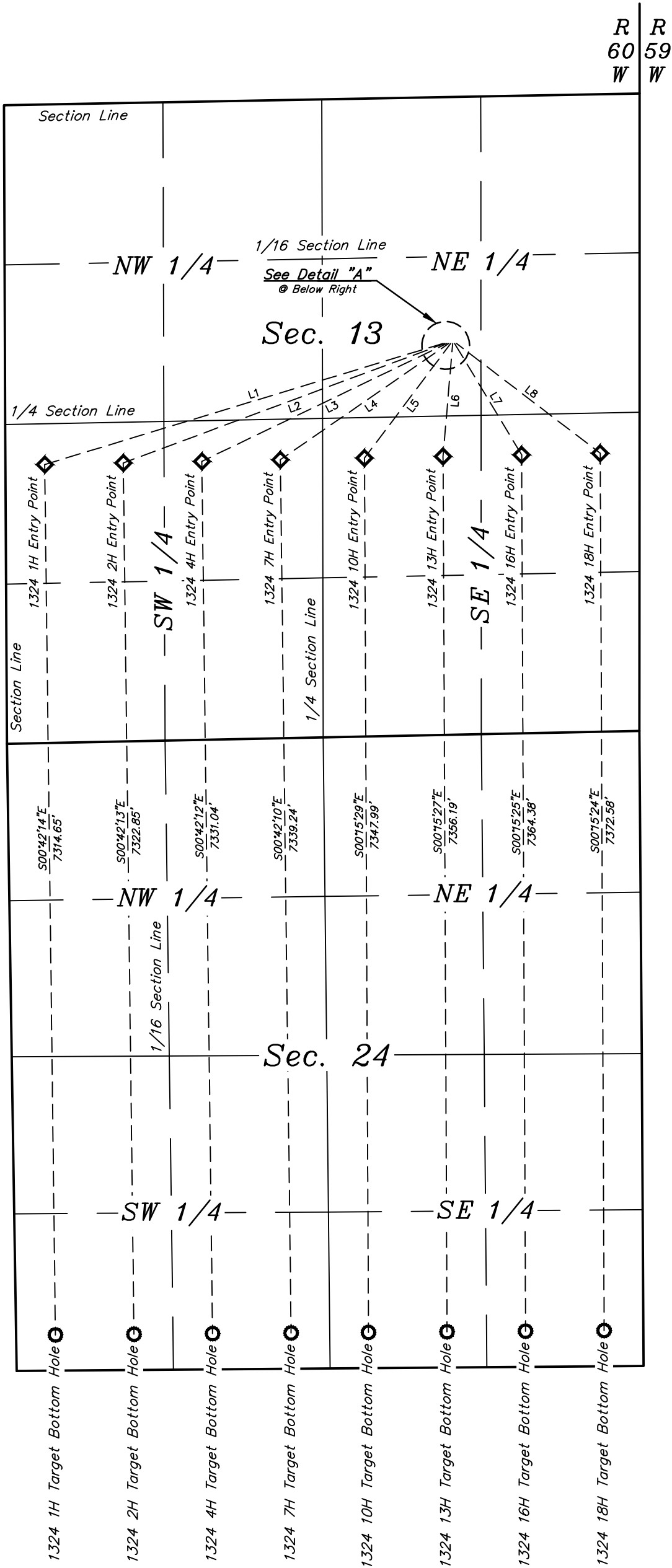




LINE TABLE		
LINE	DIRECTION	LENGTH
L1	S73°05'14"W	3498.11'
L2	S69°37'06"W	2883.39'
L3	S64°18'12"W	2284.91'
L4	S55°22'06"W	1719.69'
L5	S36°57'06"W	1204.90'
L6	S04°50'07"W	952.82'
L7	S31°03'30"E	1092.61'
L8	S52°37'30"E	1519.73'



- LEGEND:
- = PROPOSED WELLHEAD.
 - ◆ = ENTRY POINT.
 - = TARGET BOTTOM HOLE.

NOTES:

REV: 5 02-14-20 C.IVIE (WELL NAME CHANGES)

VERDAD RESOURCES LLC

ROHN FED 1324 PAD
SW 1/4 NE 1/4, SECTION 13, T9N, R60W, 6th P.M.
WELD COUNTY, COLORADO

SURVEYED BY	GREG WEIMER	01-16-20	SCALE
DRAWN BY	D.J.W.	01-05-18	1" = 1000'
MULTI-WELL PLAN		FIGURE #5	



UELS, LLC
Corporate Office * 85 South 200 East
Vernal, UT 84078 * (435) 789-1017