

REV: 1 05-21-20 K.B. (PAD & ACCESS MOVE)

**LEGEND:**

 PROPOSED LOCATION



**GREAT WESTERN OPERATING COMPANY**

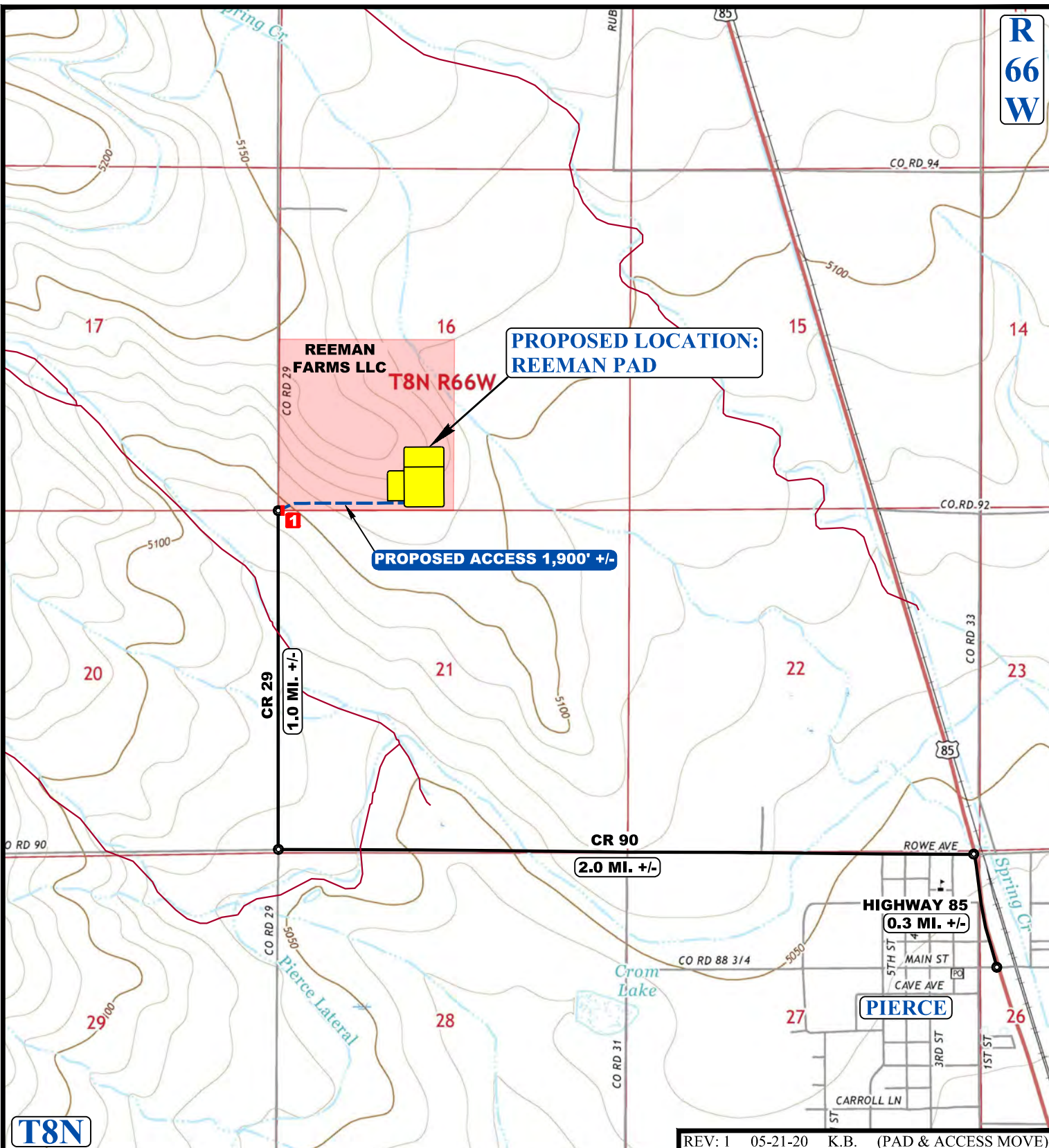
**REEMAN PAD**  
 SE 1/4 SW 1/4, SECTION 16, T8N, R66W, 6th P.M.  
 WELD COUNTY, COLORADO



**UELS, LLC**  
 Corporate Office \* 85 South 200 East  
 Vernal, UT 84078 \* (435) 789-1017

|                        |        |          |               |
|------------------------|--------|----------|---------------|
| SURVEYED BY            | M.M.   | 05-18-20 | SCALE         |
| DRAWN BY               | J.L.G. | 05-06-19 | 1 : 100,000   |
| <b>ACCESS ROAD MAP</b> |        |          | <b>TOPO A</b> |

R  
66  
W



T8N

REV: 1 05-21-20 K.B. (PAD & ACCESS MOVE)

NOTE: PARCEL DATA SHOWN HAS BEEN OBTAINED FROM VARIOUS SOURCES AND SHOULD BE USED FOR MAPPING, GRAPHIC AND PLANNING PURPOSES ONLY. NO WARRANTY IS MADE BY UINTAH ENGINEERING AND LAND SURVEYING (UELS) FOR ACCURACY OF THE PARCEL DATA.

**LEGEND:**

- EXISTING ROAD
- PROPOSED ROAD
- INSTALL 18" CULVERT



**GREAT WESTERN OPERATING COMPANY**

**REEMAN PAD**  
 SE 1/4 SW 1/4, SECTION 16, T8N, R66W, 6th P.M.  
 WELD COUNTY, COLORADO

|                        |        |          |               |
|------------------------|--------|----------|---------------|
| SURVEYED BY            | M.M.   | 05-18-20 | SCALE         |
| DRAWN BY               | J.L.G. | 05-06-19 | 1 : 24,000    |
| <b>ACCESS ROAD MAP</b> |        |          | <b>TOPO B</b> |



**UELS, LLC**  
 Corporate Office \* 85 South 200 East  
 Vernal, UT 84078 \* (435) 789-1017