



May 29, 2020

VIA ELECTRONIC TRANSMITTAL

Director
Colorado Oil & Gas Conservation Commission
1120 Lincoln Street, Suite 801
Denver, Colorado 80203

RE: 30-Day Certification Letter- Rule 318A.e

**NESE Section 21, Township 4 North, Range 62 West, 6th P.M.
2373' FSL and 909' FEL (SHL) Weld County, CO**

Dear COGCC Director,

HighPoint Operating Company ("HPOC") hereby certifies to the Director that a thirty (30-day) notice has been given by certified mail to all owners in the proposed 640-acre wellbore spacing unit. The comprised spacing unit for the Anschutz Equus Farms Federal 4-62-22-6401CB is as follows:

Township 4 North, Range 62 West

Section 15: W/2W/2	Section 21: E/2E/2
Section 16: E/2E/2	Section 22: W/2W/2

We have not received any objections to the aforementioned well or proposed spacing unit, therefore HighPoint hereby requests the Director to approve the proposed well.

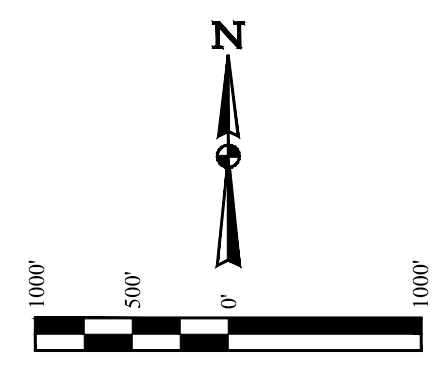
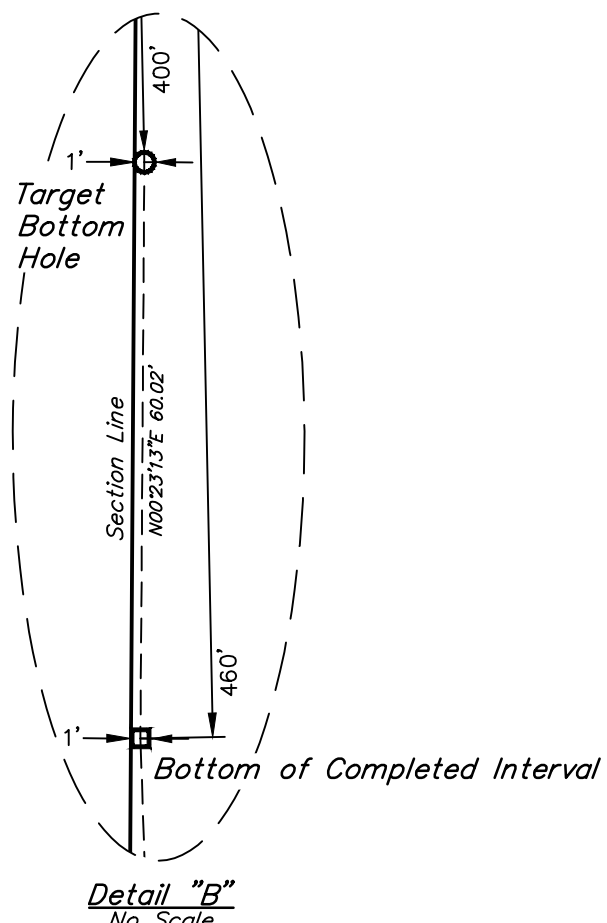
Sincerely,

HighPoint Operating Corporation

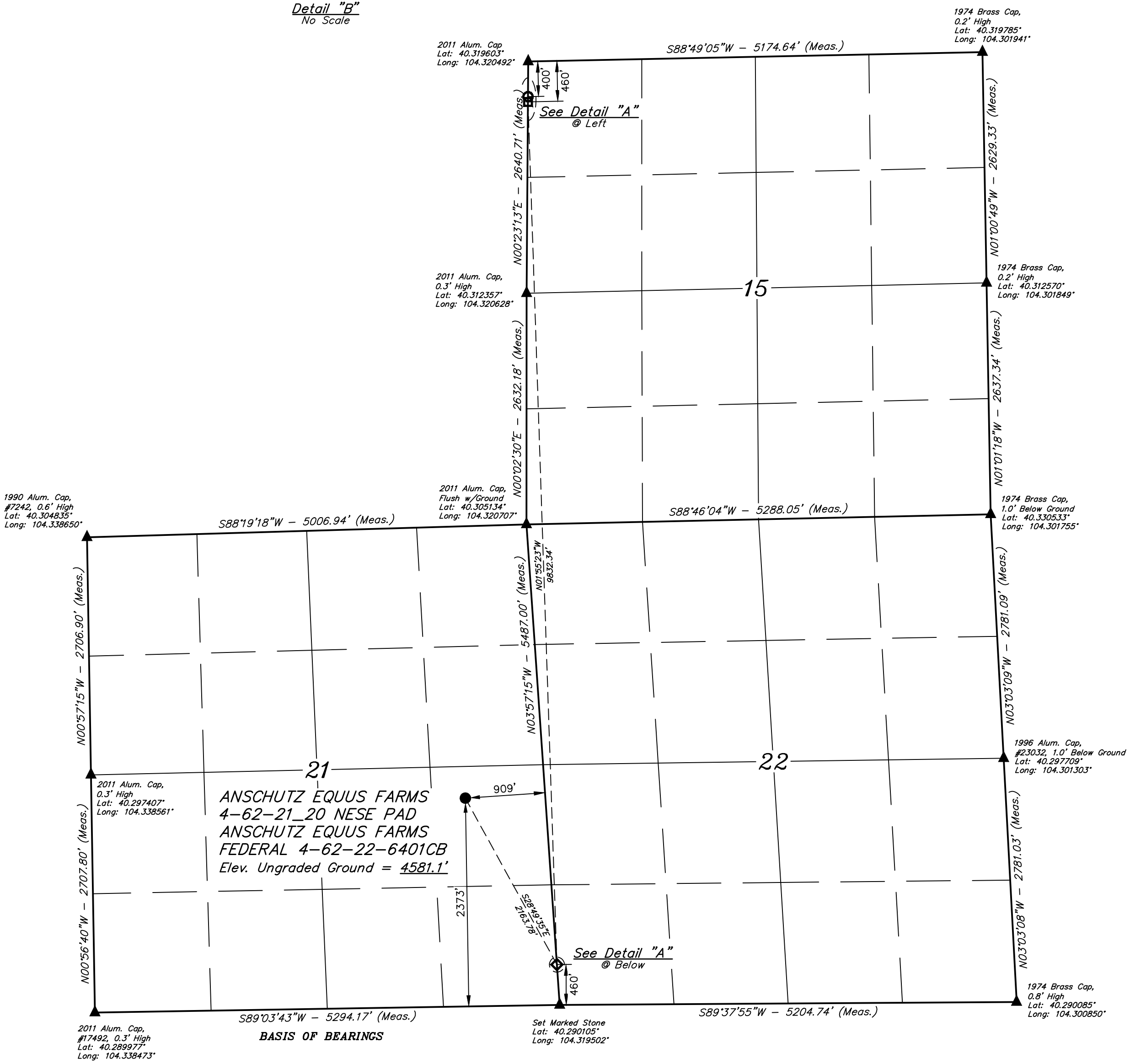
Bennett Meyer
Landman

Enclosures

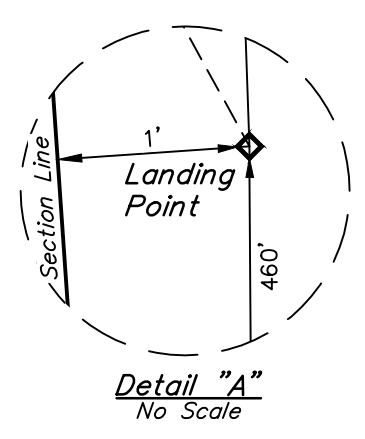
LEGEND:
 ● = PROPOSED WELLHEAD.
 ◆ = LANDING POINT.
 ◻ = BOTTOM OF COMPLETED INTERVAL.
 ○ = TARGET BOTTOM HOLE.
 ▲ = SECTION CORNERS LOCATED. (NAD 83)
NOTE:
 Distances referenced on plat to section lines are perpendicular.



BASIS OF ELEVATION
 OPUS SOLUTION GENERATED NAVD 88



ANSHUTZ EQUUS FARMS
 4-62-21_20 NESE PAD
 ANSHUTZ EQUUS FARMS
 FEDERAL 4-62-22-6401CB
 Elev. Ungraded Ground = 4581.1'



CERTIFICATE OF RECORDING
 THIS IS TO CERTIFY THAT THE ABOVE DESCRIBED SURVEY WAS MADE IN ACCORDANCE WITH THE PROVISIONS OF THE SURVEYING ACT AND THAT THE SAME ARE TRUE AND CORRECT TO THE BEST OF MY KNOWLEDGE AND BELIEF.
 [Signature]
 REGISTERED LAND SURVEYOR
 REGISTRATION NO. 28285
 STATE OF COLORADO
 SURVEY NO. 20

REV: 2 03-27-20 C.IVIE (SURFACE LOCATION MOVE)
HIGHPOINT OPERATING CORPORATION
 ANSHUTZ EQUUS FARMS 4-62-21_20 NESE PAD
 ANSHUTZ EQUUS FARMS FEDERAL 4-62-22-6401CB
 NE 1/4 SE 1/4, SECTION 21, T4N, R62W, 6th P.M.
 WELD COUNTY, COLORADO

PDOP = 1.4

NAD 83 (SURFACE LOCATION)	NAD 83 (LANDING POINT)	NAD 83 (BTM OF COMPLETED INT.)	NAD 83 (TARGET BOTTOM HOLE)
LATITUDE = 40°1747.73" (40.296591°)	LATITUDE = 40°1728.92" (40.291367°)	LATITUDE = 40°1906.02" (40.318340°)	LATITUDE = 40°1906.62" (40.318505°)
LONGITUDE = 104°1923.83" (104.323286°)	LONGITUDE = 104°1910.56" (104.319600°)	LONGITUDE = 104°1913.84" (104.320512°)	LONGITUDE = 104°1913.83" (104.320509°)
NAD 27 (SURFACE LOCATION)	NAD 27 (LANDING POINT)	NAD 27 (BTM OF COMPLETED INT.)	NAD 27 (TARGET BOTTOM HOLE)
LATITUDE = 40°1747.80" (40.296610°)	LATITUDE = 40°1728.99" (40.291386°)	LATITUDE = 40°1906.09" (40.318359°)	LATITUDE = 40°1906.68" (40.318524°)
LONGITUDE = 104°1922.00" (104.322778°)	LONGITUDE = 104°1908.73" (104.319092°)	LONGITUDE = 104°1912.01" (104.320004°)	LONGITUDE = 104°1912.00" (104.320001°)
STATE PLANE NAD 83 (CO. NORTH)	STATE PLANE NAD 83 (CO. NORTH)	STATE PLANE NAD 83 (CO. NORTH)	STATE PLANE NAD 83 (CO. NORTH)
N: 1353066.91' E: 3328217.18'	N: 1351177.75' E: 3329270.80'	N: 1360999.46' E: 3328885.65'	N: 1361059.47' E: 3328885.72'
STATE PLANE NAD 27 (CO. NORTH)	STATE PLANE NAD 27 (CO. NORTH)	STATE PLANE NAD 27 (CO. NORTH)	STATE PLANE NAD 27 (CO. NORTH)
N: 353069.45' E: 2328367.46'	N: 351180.34' E: 2329421.09'	N: 361001.80' E: 2329035.85'	N: 361061.81' E: 2329035.91'

UJINTAH
 ENGINEERING & LAND SURVEYING
 SURVEYED BY NATE WELCH, O.R.
 DRAWN BY S.F.
 UELS, LLC
 Corporate Office * 85 South 200 East
 Vernal, UT 84078 * (435) 789-1017
 09-19-19 SCALE
 09-25-19 1" = 1000'
WELL LOCATION PLAT

Anschutz Equus Farms Federal 4-62-22-6401CB - Proposed WSU

