

# **HighPoint Resources**

**Weld County, CO (NAD83)**

**Sec 21-T04N-R62W**

**ANSCHUTZ EQUUS FARMS FEDERAL 4-62-22-6401CB**

**Wellbore #1**

**Plan: Plan #2**

## **Standard Planning Report**

**01 April, 2020**

# Planning Report

<b>Database:</b>	EDM 5000.15 Single User Db	<b>Local Co-ordinate Reference:</b>	Well ANSCHUTZ EQUUS FARMS FEDERAL 4-62-22-6401CB
<b>Company:</b>	HighPoint Resources	<b>TVD Reference:</b>	kb @ 4595.80usft (Cade 23)
<b>Project:</b>	Weld County, CO (NAD83)	<b>MD Reference:</b>	kb @ 4595.80usft (Cade 23)
<b>Site:</b>	Sec 21-T04N-R62W	<b>North Reference:</b>	True
<b>Well:</b>	ANSCHUTZ EQUUS FARMS FEDERAL 4-62-22-6401CB	<b>Survey Calculation Method:</b>	Minimum Curvature
<b>Wellbore:</b>	Wellbore #1		
<b>Design:</b>	Plan #2		

<b>Project</b>	Weld County, CO (NAD83)		
<b>Map System:</b>	US State Plane 1983	<b>System Datum:</b>	Mean Sea Level
<b>Geo Datum:</b>	North American Datum 1983		
<b>Map Zone:</b>	Colorado Northern Zone		

Site		Sec 21-T04N-R62W			
Site Position:		Northing:	1,356,013.42 usft	Latitude:	40.304835
From:	Lat/Long	Easting:	3,323,892.78 usft	Longitude:	-104.338650
Position Uncertainty:	0.00 usft	Slot Radius:	13-3/16 "	Grid Convergence:	0.75 °

Well	ANSCHUTZ EQUUS FARMS FEDERAL 4-62-22-6401CB					
Well Position	+N/-S	-3,002.84 usft	Northing:	1,353,066.96 usft	Latitude:	40.296591
	+E/-W	4,285.56 usft	Easting:	3,328,217.30 usft	Longitude:	-104.323286
Position Uncertainty		0.00 usft	Wellhead Elevation:		Ground Level:	4,579.30 usft

<b>Wellbore</b>	Wellbore #1				
<b>Magnetics</b>	<b>Model Name</b>	<b>Sample Date</b>	<b>Declination (°)</b>	<b>Dip Angle (°)</b>	<b>Field Strength (nT)</b>
	IGRF2015	11/26/2019	7.71	66.78	52,107.41124031

<b>Design</b>	Plan #2				
<b>Audit Notes:</b>					
<b>Version:</b>		<b>Phase:</b>	PLAN	<b>Tie On Depth:</b>	0.00
<b>Vertical Section:</b>	<b>Depth From (TVD) (usft)</b>	<b>+N/-S (usft)</b>	<b>+E/-W (usft)</b>	<b>Direction (°)</b>	
	0.00	0.00	0.00	358.53	

<b>Plan Survey Tool Program</b>	<b>Date</b>	4/1/2020			
<b>Depth From (usft)</b>	<b>Depth To (usft)</b>	<b>Survey (Wellbore)</b>	<b>Tool Name</b>	<b>Remarks</b>	
1	0.00	17,286.88	Plan #2 (Wellbore #1)	MWD+HRGM	
				OWSG MWD + HRGM	

# Planning Report

<b>Database:</b>	EDM 5000.15 Single User Db	<b>Local Co-ordinate Reference:</b>	Well ANSCHUTZ EQUUS FARMS FEDERAL 4-62-22-6401CB
<b>Company:</b>	HighPoint Resources	<b>TVD Reference:</b>	kb @ 4595.80usft (Cade 23)
<b>Project:</b>	Weld County, CO (NAD83)	<b>MD Reference:</b>	kb @ 4595.80usft (Cade 23)
<b>Site:</b>	Sec 21-T04N-R62W	<b>North Reference:</b>	True
<b>Well:</b>	ANSCHUTZ EQUUS FARMS FEDERAL 4-62-22-6401CB	<b>Survey Calculation Method:</b>	Minimum Curvature
<b>Wellbore:</b>	Wellbore #1		
<b>Design:</b>	Plan #2		

Plan Sections										
Measured Depth (usft)	Inclination (°)	Azimuth (°)	Vertical Depth (usft)	+N/-S (usft)	+E/-W (usft)	Dogleg Rate (°/100usft)	Build Rate (°/100usft)	Turn Rate (°/100usft)	TFO (°)	Target
0.00	0.00	0.00	0.00	0.00	0.00	0.00	0.00	0.00	0.00	
300.00	0.00	0.00	300.00	0.00	0.00	0.00	0.00	0.00	0.00	
466.67	5.00	159.97	466.46	-6.83	2.49	3.00	3.00	0.00	159.97	
850.00	5.00	159.97	848.33	-38.22	13.93	0.00	0.00	0.00	0.00	
2,178.58	31.57	159.97	2,098.55	-426.36	155.42	2.00	2.00	0.00	0.00	
6,199.95	31.57	159.97	5,524.70	-2,404.48	876.50	0.00	0.00	0.00	0.00	
7,397.54	90.00	358.53	6,366.10	-1,903.02	1,028.23	10.00	4.88	-13.48	-158.49	LP ANSCHUTZ EQUI
17,286.88	90.00	358.53	6,366.10	7,983.07	774.35	0.00	0.00	0.00	0.00	PBHL ANSCHUTZ EC

# Planning Report

<b>Database:</b>	EDM 5000.15 Single User Db	<b>Local Co-ordinate Reference:</b>	Well ANSCHUTZ EQUUS FARMS FEDERAL 4-62-22-6401CB
<b>Company:</b>	HighPoint Resources	<b>TVD Reference:</b>	kb @ 4595.80usft (Cade 23)
<b>Project:</b>	Weld County, CO (NAD83)	<b>MD Reference:</b>	kb @ 4595.80usft (Cade 23)
<b>Site:</b>	Sec 21-T04N-R62W	<b>North Reference:</b>	True
<b>Well:</b>	ANSCHUTZ EQUUS FARMS FEDERAL 4-62-22-6401CB	<b>Survey Calculation Method:</b>	Minimum Curvature
<b>Wellbore:</b>	Wellbore #1		
<b>Design:</b>	Plan #2		

Planned Survey									
Measured Depth (usft)	Inclination (°)	Azimuth (°)	Vertical Depth (usft)	+N/-S (usft)	+E/-W (usft)	Vertical Section (usft)	Dogleg Rate (°/100usft)	Build Rate (°/100usft)	Turn Rate (°/100usft)
0.00	0.00	0.00	0.00	0.00	0.00	0.00	0.00	0.00	0.00
100.00	0.00	0.00	100.00	0.00	0.00	0.00	0.00	0.00	0.00
200.00	0.00	0.00	200.00	0.00	0.00	0.00	0.00	0.00	0.00
300.00	0.00	0.00	300.00	0.00	0.00	0.00	0.00	0.00	0.00
Start Build 3.00									
400.00	3.00	159.97	399.95	-2.46	0.90	-2.48	3.00	3.00	0.00
466.67	5.00	159.97	466.46	-6.83	2.49	-6.89	3.00	3.00	0.00
Start 383.33 hold at 466.67 MD									
500.00	5.00	159.97	499.66	-9.56	3.48	-9.64	0.00	0.00	0.00
600.00	5.00	159.97	599.28	-17.75	6.47	-17.91	0.00	0.00	0.00
700.00	5.00	159.97	698.90	-25.93	9.45	-26.17	0.00	0.00	0.00
800.00	5.00	159.97	798.52	-34.12	12.44	-34.43	0.00	0.00	0.00
850.00	5.00	159.97	848.33	-38.22	13.93	-38.56	0.00	0.00	0.00
Start DLS 2.00 TFO 0.00									
900.00	6.00	159.97	898.10	-42.72	15.57	-43.10	2.00	2.00	0.00
1,000.00	8.00	159.97	997.35	-54.17	19.75	-54.66	2.00	2.00	0.00
1,100.00	10.00	159.97	1,096.11	-68.87	25.11	-69.49	2.00	2.00	0.00
1,200.00	12.00	159.97	1,194.27	-86.79	31.64	-87.57	2.00	2.00	0.00
1,300.00	14.00	159.97	1,291.70	-107.92	39.34	-108.90	2.00	2.00	0.00
1,400.00	16.00	159.97	1,388.29	-132.24	48.21	-133.43	2.00	2.00	0.00
1,500.00	18.00	159.97	1,483.92	-159.71	58.22	-161.15	2.00	2.00	0.00
1,600.00	20.00	159.97	1,578.46	-190.29	69.37	-192.01	2.00	2.00	0.00
1,700.00	22.00	159.97	1,671.82	-223.96	81.64	-225.98	2.00	2.00	0.00
1,800.00	24.00	159.97	1,763.86	-260.67	95.02	-263.02	2.00	2.00	0.00
1,900.00	26.00	159.97	1,854.49	-300.37	109.50	-303.08	2.00	2.00	0.00
2,000.00	28.00	159.97	1,943.58	-343.03	125.05	-346.12	2.00	2.00	0.00
2,100.00	30.00	159.97	2,031.04	-388.57	141.65	-392.08	2.00	2.00	0.00
2,178.58	31.57	159.97	2,098.55	-426.36	155.42	-430.21	2.00	2.00	0.00
Start 4021.37 hold at 2178.58 MD									
2,200.00	31.57	159.97	2,116.80	-436.89	159.26	-440.84	0.00	0.00	0.00
2,300.00	31.57	159.97	2,201.99	-486.08	177.19	-490.47	0.00	0.00	0.00
2,400.00	31.57	159.97	2,287.19	-535.27	195.13	-540.10	0.00	0.00	0.00
2,500.00	31.57	159.97	2,372.39	-584.46	213.06	-589.74	0.00	0.00	0.00
2,600.00	31.57	159.97	2,457.59	-633.66	230.99	-639.37	0.00	0.00	0.00
2,700.00	31.57	159.97	2,542.79	-682.85	248.92	-689.01	0.00	0.00	0.00
2,800.00	31.57	159.97	2,627.99	-732.04	266.85	-738.64	0.00	0.00	0.00
2,900.00	31.57	159.97	2,713.19	-781.23	284.78	-788.27	0.00	0.00	0.00
3,000.00	31.57	159.97	2,798.38	-830.42	302.71	-837.91	0.00	0.00	0.00
3,100.00	31.57	159.97	2,883.58	-879.61	320.64	-887.54	0.00	0.00	0.00
3,200.00	31.57	159.97	2,968.78	-928.80	338.58	-937.18	0.00	0.00	0.00
3,300.00	31.57	159.97	3,053.98	-977.99	356.51	-986.81	0.00	0.00	0.00
3,400.00	31.57	159.97	3,139.18	-1,027.18	374.44	-1,036.44	0.00	0.00	0.00
3,500.00	31.57	159.97	3,224.38	-1,076.37	392.37	-1,086.08	0.00	0.00	0.00
3,600.00	31.57	159.97	3,309.58	-1,125.56	410.30	-1,135.71	0.00	0.00	0.00
3,700.00	31.57	159.97	3,394.78	-1,174.75	428.23	-1,185.35	0.00	0.00	0.00
3,800.00	31.57	159.97	3,479.97	-1,223.94	446.16	-1,234.98	0.00	0.00	0.00
3,900.00	31.57	159.97	3,565.17	-1,273.13	464.09	-1,284.61	0.00	0.00	0.00
4,000.00	31.57	159.97	3,650.37	-1,322.32	482.03	-1,334.25	0.00	0.00	0.00
4,100.00	31.57	159.97	3,735.57	-1,371.51	499.96	-1,383.88	0.00	0.00	0.00
4,200.00	31.57	159.97	3,820.77	-1,420.70	517.89	-1,433.52	0.00	0.00	0.00
4,300.00	31.57	159.97	3,905.97	-1,469.89	535.82	-1,483.15	0.00	0.00	0.00
4,400.00	31.57	159.97	3,991.17	-1,519.08	553.75	-1,532.78	0.00	0.00	0.00

# Planning Report

<b>Database:</b>	EDM 5000.15 Single User Db	<b>Local Co-ordinate Reference:</b>	Well ANSCHUTZ EQUUS FARMS FEDERAL
<b>Company:</b>	HighPoint Resources	<b>TVD Reference:</b>	4-62-22-6401CB
<b>Project:</b>	Weld County, CO (NAD83)	<b>MD Reference:</b>	kb @ 4595.80usft (Cade 23)
<b>Site:</b>	Sec 21-T04N-R62W	<b>North Reference:</b>	kb @ 4595.80usft (Cade 23)
<b>Well:</b>	ANSCHUTZ EQUUS FARMS FEDERAL	<b>Survey Calculation Method:</b>	True
<b>Wellbore:</b>	4-62-22-6401CB		Minimum Curvature
<b>Design:</b>	Wellbore #1		
	Plan #2		

Planned Survey										
Measured Depth (usft)	Inclination (°)	Azimuth (°)	Vertical Depth (usft)	+N/-S (usft)	+E/-W (usft)	Vertical Section (usft)	Dogleg Rate (°/100usft)	Build Rate (°/100usft)	Turn Rate (°/100usft)	
4,500.00	31.57	159.97	4,076.36	-1,568.27	571.68	-1,582.42	0.00	0.00	0.00	
4,600.00	31.57	159.97	4,161.56	-1,617.46	589.61	-1,632.05	0.00	0.00	0.00	
4,700.00	31.57	159.97	4,246.76	-1,666.65	607.54	-1,681.69	0.00	0.00	0.00	
4,800.00	31.57	159.97	4,331.96	-1,715.84	625.47	-1,731.32	0.00	0.00	0.00	
4,900.00	31.57	159.97	4,417.16	-1,765.03	643.41	-1,780.95	0.00	0.00	0.00	
5,000.00	31.57	159.97	4,502.36	-1,814.22	661.34	-1,830.59	0.00	0.00	0.00	
5,100.00	31.57	159.97	4,587.56	-1,863.41	679.27	-1,880.22	0.00	0.00	0.00	
5,200.00	31.57	159.97	4,672.75	-1,912.60	697.20	-1,929.86	0.00	0.00	0.00	
5,300.00	31.57	159.97	4,757.95	-1,961.79	715.13	-1,979.49	0.00	0.00	0.00	
5,400.00	31.57	159.97	4,843.15	-2,010.98	733.06	-2,029.12	0.00	0.00	0.00	
5,500.00	31.57	159.97	4,928.35	-2,060.17	750.99	-2,078.76	0.00	0.00	0.00	
5,600.00	31.57	159.97	5,013.55	-2,109.36	768.92	-2,128.39	0.00	0.00	0.00	
5,700.00	31.57	159.97	5,098.75	-2,158.55	786.86	-2,178.03	0.00	0.00	0.00	
5,800.00	31.57	159.97	5,183.95	-2,207.74	804.79	-2,227.66	0.00	0.00	0.00	
5,900.00	31.57	159.97	5,269.14	-2,256.93	822.72	-2,277.29	0.00	0.00	0.00	
6,000.00	31.57	159.97	5,354.34	-2,306.12	840.65	-2,326.93	0.00	0.00	0.00	
6,100.00	31.57	159.97	5,439.54	-2,355.31	858.58	-2,376.56	0.00	0.00	0.00	
6,199.95	31.57	159.97	5,524.70	-2,404.48	876.50	-2,426.17	0.00	0.00	0.00	
Start DLS 10.00 TFO -158.49										
6,250.00	26.97	155.93	5,568.35	-2,427.16	885.63	-2,449.08	10.00	-9.19	-8.08	
6,300.00	22.53	150.41	5,613.75	-2,445.86	894.99	-2,468.01	10.00	-8.88	-11.05	
6,350.00	18.37	142.44	5,660.60	-2,460.44	904.53	-2,482.84	10.00	-8.33	-15.92	
6,400.00	14.71	130.38	5,708.53	-2,470.81	914.17	-2,493.45	10.00	-7.32	-24.13	
6,450.00	12.03	111.95	5,757.20	-2,476.87	923.85	-2,499.76	10.00	-5.36	-36.85	
6,500.00	11.07	87.25	5,806.21	-2,478.59	933.48	-2,501.72	10.00	-1.93	-49.42	
6,550.00	12.23	62.96	5,855.21	-2,475.95	943.00	-2,499.33	10.00	2.33	-48.57	
6,600.00	15.04	45.25	5,903.82	-2,468.97	952.33	-2,492.59	10.00	5.61	-35.43	
6,650.00	18.76	33.68	5,951.67	-2,457.71	961.40	-2,481.56	10.00	7.45	-23.13	
6,700.00	22.96	26.02	5,998.39	-2,442.24	970.14	-2,466.33	10.00	8.40	-15.32	
6,750.00	27.42	20.68	6,043.63	-2,422.69	978.49	-2,447.00	10.00	8.91	-10.69	
6,800.00	32.03	16.75	6,087.04	-2,399.21	986.38	-2,423.73	10.00	9.22	-7.86	
6,850.00	36.73	13.72	6,128.30	-2,371.98	993.75	-2,396.69	10.00	9.40	-6.05	
6,900.00	41.49	11.30	6,167.09	-2,341.19	1,000.55	-2,366.09	10.00	9.52	-4.84	
6,950.00	46.29	9.30	6,203.11	-2,307.10	1,006.72	-2,332.16	10.00	9.61	-4.00	
7,000.00	51.13	7.60	6,236.10	-2,269.95	1,012.22	-2,295.17	10.00	9.67	-3.41	
7,050.00	55.98	6.11	6,265.79	-2,230.03	1,017.01	-2,255.38	10.00	9.71	-2.97	
7,100.00	60.85	4.79	6,291.97	-2,187.64	1,021.04	-2,213.11	10.00	9.74	-2.65	
7,150.00	65.74	3.59	6,314.43	-2,143.10	1,024.29	-2,168.67	10.00	9.77	-2.41	
7,200.00	70.63	2.47	6,333.01	-2,096.76	1,026.74	-2,122.41	10.00	9.78	-2.23	
7,250.00	75.53	1.42	6,347.56	-2,048.97	1,028.36	-2,074.68	10.00	9.80	-2.10	
7,300.00	80.43	0.42	6,357.97	-2,000.09	1,029.14	-2,025.83	10.00	9.81	-2.01	
7,350.00	85.34	359.44	6,364.17	-1,950.49	1,029.08	-1,976.25	10.00	9.81	-1.95	
7,397.54	90.00	358.53	6,366.10	-1,903.02	1,028.23	-1,928.77	10.00	9.81	-1.92	
Start 9889.35 hold at 7397.54 MD										
7,400.00	90.00	358.53	6,366.10	-1,900.55	1,028.17	-1,926.30	0.00	0.00	0.00	
7,500.00	90.00	358.53	6,366.10	-1,800.59	1,025.60	-1,826.30	0.00	0.00	0.00	
7,600.00	90.00	358.53	6,366.10	-1,700.62	1,023.04	-1,726.30	0.00	0.00	0.00	
7,700.00	90.00	358.53	6,366.10	-1,600.65	1,020.47	-1,626.30	0.00	0.00	0.00	
7,800.00	90.00	358.53	6,366.10	-1,500.68	1,017.90	-1,526.30	0.00	0.00	0.00	
7,900.00	90.00	358.53	6,366.10	-1,400.72	1,015.33	-1,426.30	0.00	0.00	0.00	
8,000.00	90.00	358.53	6,366.10	-1,300.75	1,012.77	-1,326.30	0.00	0.00	0.00	

# Planning Report

<b>Database:</b>	EDM 5000.15 Single User Db	<b>Local Co-ordinate Reference:</b>	Well ANSCHUTZ EQUUS FARMS FEDERAL 4-62-22-6401CB
<b>Company:</b>	HighPoint Resources	<b>TVD Reference:</b>	kb @ 4595.80usft (Cade 23)
<b>Project:</b>	Weld County, CO (NAD83)	<b>MD Reference:</b>	kb @ 4595.80usft (Cade 23)
<b>Site:</b>	Sec 21-T04N-R62W	<b>North Reference:</b>	True
<b>Well:</b>	ANSCHUTZ EQUUS FARMS FEDERAL 4-62-22-6401CB	<b>Survey Calculation Method:</b>	Minimum Curvature
<b>Wellbore:</b>	Wellbore #1		
<b>Design:</b>	Plan #2		

Planned Survey										
Measured Depth (usft)	Inclination (°)	Azimuth (°)	Vertical Depth (usft)	+N/-S (usft)	+E/-W (usft)	Vertical Section (usft)	Dogleg Rate (°/100usft)	Build Rate (°/100usft)	Turn Rate (°/100usft)	
8,100.00	90.00	358.53	6,366.10	-1,200.78	1,010.20	-1,226.30	0.00	0.00	0.00	
8,200.00	90.00	358.53	6,366.10	-1,100.82	1,007.63	-1,126.30	0.00	0.00	0.00	
8,300.00	90.00	358.53	6,366.10	-1,000.85	1,005.07	-1,026.30	0.00	0.00	0.00	
8,400.00	90.00	358.53	6,366.10	-900.88	1,002.50	-926.30	0.00	0.00	0.00	
8,500.00	90.00	358.53	6,366.10	-800.92	999.93	-826.30	0.00	0.00	0.00	
8,600.00	90.00	358.53	6,366.10	-700.95	997.36	-726.30	0.00	0.00	0.00	
8,700.00	90.00	358.53	6,366.10	-600.98	994.80	-626.30	0.00	0.00	0.00	
8,800.00	90.00	358.53	6,366.10	-501.01	992.23	-526.30	0.00	0.00	0.00	
8,900.00	90.00	358.53	6,366.10	-401.05	989.66	-426.30	0.00	0.00	0.00	
9,000.00	90.00	358.53	6,366.10	-301.08	987.10	-326.30	0.00	0.00	0.00	
9,100.00	90.00	358.53	6,366.10	-201.11	984.53	-226.30	0.00	0.00	0.00	
9,200.00	90.00	358.53	6,366.10	-101.15	981.96	-126.30	0.00	0.00	0.00	
9,300.00	90.00	358.53	6,366.10	-1.18	979.39	-26.30	0.00	0.00	0.00	
9,400.00	90.00	358.53	6,366.10	98.79	976.83	73.70	0.00	0.00	0.00	
9,500.00	90.00	358.53	6,366.10	198.76	974.26	173.70	0.00	0.00	0.00	
9,600.00	90.00	358.53	6,366.10	298.72	971.69	273.70	0.00	0.00	0.00	
9,700.00	90.00	358.53	6,366.10	398.69	969.12	373.70	0.00	0.00	0.00	
9,800.00	90.00	358.53	6,366.10	498.66	966.56	473.70	0.00	0.00	0.00	
9,900.00	90.00	358.53	6,366.10	598.62	963.99	573.70	0.00	0.00	0.00	
10,000.00	90.00	358.53	6,366.10	698.59	961.42	673.70	0.00	0.00	0.00	
10,100.00	90.00	358.53	6,366.10	798.56	958.86	773.70	0.00	0.00	0.00	
10,200.00	90.00	358.53	6,366.10	898.52	956.29	873.70	0.00	0.00	0.00	
10,300.00	90.00	358.53	6,366.10	998.49	953.72	973.70	0.00	0.00	0.00	
10,400.00	90.00	358.53	6,366.10	1,098.46	951.15	1,073.70	0.00	0.00	0.00	
10,500.00	90.00	358.53	6,366.10	1,198.43	948.59	1,173.70	0.00	0.00	0.00	
10,600.00	90.00	358.53	6,366.10	1,298.39	946.02	1,273.70	0.00	0.00	0.00	
10,700.00	90.00	358.53	6,366.10	1,398.36	943.45	1,373.70	0.00	0.00	0.00	
10,800.00	90.00	358.53	6,366.10	1,498.33	940.89	1,473.70	0.00	0.00	0.00	
10,900.00	90.00	358.53	6,366.10	1,598.29	938.32	1,573.70	0.00	0.00	0.00	
11,000.00	90.00	358.53	6,366.10	1,698.26	935.75	1,673.70	0.00	0.00	0.00	
11,100.00	90.00	358.53	6,366.10	1,798.23	933.18	1,773.70	0.00	0.00	0.00	
11,200.00	90.00	358.53	6,366.10	1,898.20	930.62	1,873.70	0.00	0.00	0.00	
11,300.00	90.00	358.53	6,366.10	1,998.16	928.05	1,973.70	0.00	0.00	0.00	
11,400.00	90.00	358.53	6,366.10	2,098.13	925.48	2,073.70	0.00	0.00	0.00	
11,500.00	90.00	358.53	6,366.10	2,198.10	922.91	2,173.70	0.00	0.00	0.00	
11,600.00	90.00	358.53	6,366.10	2,298.06	920.35	2,273.70	0.00	0.00	0.00	
11,700.00	90.00	358.53	6,366.10	2,398.03	917.78	2,373.70	0.00	0.00	0.00	
11,800.00	90.00	358.53	6,366.10	2,498.00	915.21	2,473.70	0.00	0.00	0.00	
11,900.00	90.00	358.53	6,366.10	2,597.96	912.65	2,573.70	0.00	0.00	0.00	
12,000.00	90.00	358.53	6,366.10	2,697.93	910.08	2,673.70	0.00	0.00	0.00	
12,100.00	90.00	358.53	6,366.10	2,797.90	907.51	2,773.70	0.00	0.00	0.00	
12,200.00	90.00	358.53	6,366.10	2,897.87	904.94	2,873.70	0.00	0.00	0.00	
12,300.00	90.00	358.53	6,366.10	2,997.83	902.38	2,973.70	0.00	0.00	0.00	
12,400.00	90.00	358.53	6,366.10	3,097.80	899.81	3,073.70	0.00	0.00	0.00	
12,500.00	90.00	358.53	6,366.10	3,197.77	897.24	3,173.70	0.00	0.00	0.00	
12,600.00	90.00	358.53	6,366.10	3,297.73	894.68	3,273.70	0.00	0.00	0.00	
12,700.00	90.00	358.53	6,366.10	3,397.70	892.11	3,373.70	0.00	0.00	0.00	
12,800.00	90.00	358.53	6,366.10	3,497.67	889.54	3,473.70	0.00	0.00	0.00	
12,900.00	90.00	358.53	6,366.10	3,597.63	886.97	3,573.70	0.00	0.00	0.00	
13,000.00	90.00	358.53	6,366.10	3,697.60	884.41	3,673.70	0.00	0.00	0.00	
13,100.00	90.00	358.53	6,366.10	3,797.57	881.84	3,773.70	0.00	0.00	0.00	
13,200.00	90.00	358.53	6,366.10	3,897.54	879.27	3,873.70	0.00	0.00	0.00	

# Planning Report

<b>Database:</b>	EDM 5000.15 Single User Db	<b>Local Co-ordinate Reference:</b>	Well ANSCHUTZ EQUUS FARMS FEDERAL 4-62-22-6401CB
<b>Company:</b>	HighPoint Resources	<b>TVD Reference:</b>	kb @ 4595.80usft (Cade 23)
<b>Project:</b>	Weld County, CO (NAD83)	<b>MD Reference:</b>	kb @ 4595.80usft (Cade 23)
<b>Site:</b>	Sec 21-T04N-R62W	<b>North Reference:</b>	True
<b>Well:</b>	ANSCHUTZ EQUUS FARMS FEDERAL 4-62-22-6401CB	<b>Survey Calculation Method:</b>	Minimum Curvature
<b>Wellbore:</b>	Wellbore #1		
<b>Design:</b>	Plan #2		

Planned Survey									
Measured Depth (usft)	Inclination (°)	Azimuth (°)	Vertical Depth (usft)	+N/-S (usft)	+E/-W (usft)	Vertical Section (usft)	Dogleg Rate (°/100usft)	Build Rate (°/100usft)	Turn Rate (°/100usft)
13,300.00	90.00	358.53	6,366.10	3,997.50	876.71	3,973.70	0.00	0.00	0.00
13,400.00	90.00	358.53	6,366.10	4,097.47	874.14	4,073.70	0.00	0.00	0.00
13,500.00	90.00	358.53	6,366.10	4,197.44	871.57	4,173.70	0.00	0.00	0.00
13,600.00	90.00	358.53	6,366.10	4,297.40	869.00	4,273.70	0.00	0.00	0.00
13,700.00	90.00	358.53	6,366.10	4,397.37	866.44	4,373.70	0.00	0.00	0.00
13,800.00	90.00	358.53	6,366.10	4,497.34	863.87	4,473.70	0.00	0.00	0.00
13,900.00	90.00	358.53	6,366.10	4,597.31	861.30	4,573.70	0.00	0.00	0.00
14,000.00	90.00	358.53	6,366.10	4,697.27	858.73	4,673.70	0.00	0.00	0.00
14,100.00	90.00	358.53	6,366.10	4,797.24	856.17	4,773.70	0.00	0.00	0.00
14,200.00	90.00	358.53	6,366.10	4,897.21	853.60	4,873.70	0.00	0.00	0.00
14,300.00	90.00	358.53	6,366.10	4,997.17	851.03	4,973.70	0.00	0.00	0.00
14,400.00	90.00	358.53	6,366.10	5,097.14	848.47	5,073.70	0.00	0.00	0.00
14,500.00	90.00	358.53	6,366.10	5,197.11	845.90	5,173.70	0.00	0.00	0.00
14,600.00	90.00	358.53	6,366.10	5,297.07	843.33	5,273.70	0.00	0.00	0.00
14,700.00	90.00	358.53	6,366.10	5,397.04	840.76	5,373.70	0.00	0.00	0.00
14,800.00	90.00	358.53	6,366.10	5,497.01	838.20	5,473.70	0.00	0.00	0.00
14,900.00	90.00	358.53	6,366.10	5,596.98	835.63	5,573.70	0.00	0.00	0.00
15,000.00	90.00	358.53	6,366.10	5,696.94	833.06	5,673.70	0.00	0.00	0.00
15,100.00	90.00	358.53	6,366.10	5,796.91	830.50	5,773.70	0.00	0.00	0.00
15,200.00	90.00	358.53	6,366.10	5,896.88	827.93	5,873.70	0.00	0.00	0.00
15,300.00	90.00	358.53	6,366.10	5,996.84	825.36	5,973.70	0.00	0.00	0.00
15,400.00	90.00	358.53	6,366.10	6,096.81	822.79	6,073.70	0.00	0.00	0.00
15,500.00	90.00	358.53	6,366.10	6,196.78	820.23	6,173.70	0.00	0.00	0.00
15,600.00	90.00	358.53	6,366.10	6,296.74	817.66	6,273.70	0.00	0.00	0.00
15,700.00	90.00	358.53	6,366.10	6,396.71	815.09	6,373.70	0.00	0.00	0.00
15,800.00	90.00	358.53	6,366.10	6,496.68	812.52	6,473.70	0.00	0.00	0.00
15,900.00	90.00	358.53	6,366.10	6,596.65	809.96	6,573.70	0.00	0.00	0.00
16,000.00	90.00	358.53	6,366.10	6,696.61	807.39	6,673.70	0.00	0.00	0.00
16,100.00	90.00	358.53	6,366.10	6,796.58	804.82	6,773.70	0.00	0.00	0.00
16,200.00	90.00	358.53	6,366.10	6,896.55	802.26	6,873.70	0.00	0.00	0.00
16,300.00	90.00	358.53	6,366.10	6,996.51	799.69	6,973.70	0.00	0.00	0.00
16,400.00	90.00	358.53	6,366.10	7,096.48	797.12	7,073.70	0.00	0.00	0.00
16,500.00	90.00	358.53	6,366.10	7,196.45	794.55	7,173.70	0.00	0.00	0.00
16,600.00	90.00	358.53	6,366.10	7,296.42	791.99	7,273.70	0.00	0.00	0.00
16,700.00	90.00	358.53	6,366.10	7,396.38	789.42	7,373.70	0.00	0.00	0.00
16,800.00	90.00	358.53	6,366.10	7,496.35	786.85	7,473.70	0.00	0.00	0.00
16,900.00	90.00	358.53	6,366.10	7,596.32	784.29	7,573.70	0.00	0.00	0.00
17,000.00	90.00	358.53	6,366.10	7,696.28	781.72	7,673.70	0.00	0.00	0.00
17,100.00	90.00	358.53	6,366.10	7,796.25	779.15	7,773.70	0.00	0.00	0.00
17,200.00	90.00	358.53	6,366.10	7,896.22	776.58	7,873.70	0.00	0.00	0.00
17,286.88	90.00	358.53	6,366.10	7,983.07	774.35	7,960.58	0.00	0.00	0.00
TD at 17286.88									

# Planning Report

<b>Database:</b>	EDM 5000.15 Single User Db	<b>Local Co-ordinate Reference:</b>	Well ANSCHUTZ EQUUS FARMS FEDERAL 4-62-22-6401CB
<b>Company:</b>	HighPoint Resources	<b>TVD Reference:</b>	kb @ 4595.80usft (Cade 23)
<b>Project:</b>	Weld County, CO (NAD83)	<b>MD Reference:</b>	kb @ 4595.80usft (Cade 23)
<b>Site:</b>	Sec 21-T04N-R62W	<b>North Reference:</b>	True
<b>Well:</b>	ANSCHUTZ EQUUS FARMS FEDERAL 4-62-22-6401CB	<b>Survey Calculation Method:</b>	Minimum Curvature
<b>Wellbore:</b>	Wellbore #1		
<b>Design:</b>	Plan #2		

Design Targets									
Target Name - hit/miss target - Shape	Dip Angle (°)	Dip Dir. (°)	TVD (usft)	+N/-S (usft)	+E/-W (usft)	Northing (usft)	Easting (usft)	Latitude	Longitude
LP ANSCHUTZ EQUUS - plan hits target center - Point	0.00	0.00	6,366.10	-1,903.02	1,028.23	1,351,177.76	3,329,270.70	40.291367	-104.319600
PBHL ANSCHUTZ EQU - plan hits target center - Point	0.00	0.00	6,366.10	7,983.07	774.35	1,361,059.61	3,328,885.66	40.318505	-104.320509

Plan Annotations					
Measured Depth (usft)	Vertical Depth (usft)	Local Coordinates			
		+N/-S (usft)	+E/-W (usft)	Comment	
300.00	300.00	0.00	0.00	Start Build 3.00	
466.67	466.46	-6.83	2.49	Start 383.33 hold at 466.67 MD	
850.00	848.33	-38.22	13.93	Start DLS 2.00 TFO 0.00	
2,178.58	2,098.55	-426.36	155.42	Start 4021.37 hold at 2178.58 MD	
6,199.95	5,524.70	-2,404.48	876.50	Start DLS 10.00 TFO -158.49	
7,397.54	6,366.10	-1,903.02	1,028.23	Start 9889.35 hold at 7397.54 MD	
17,286.88	6,366.10	7,983.07	774.35	TD at 17286.88	





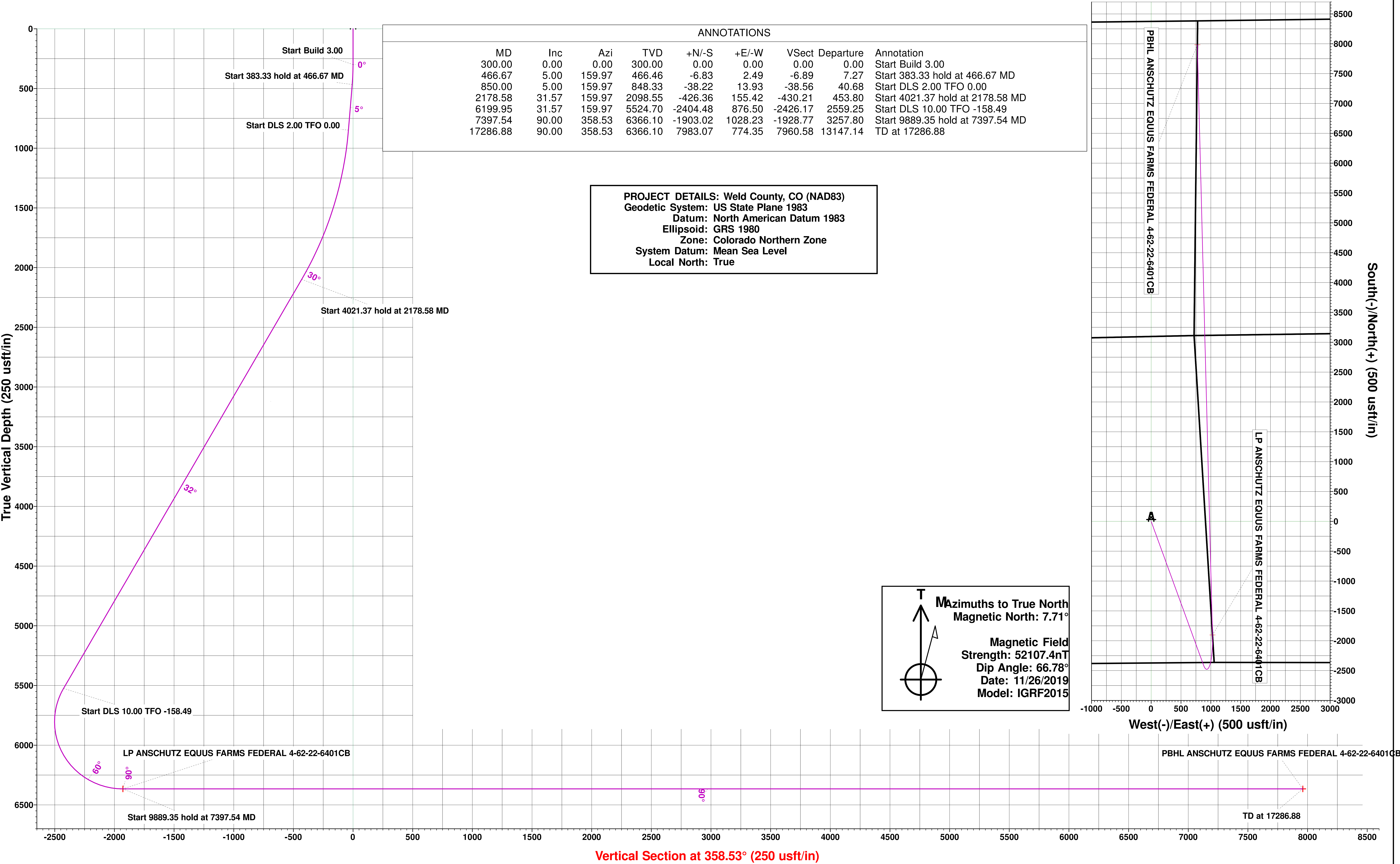
HighPoint Resources  
Project: Weld County, CO (NAD83)  
Site: Sec 21-T04N-R62W  
Well: ANSCHUTZ EQUUS FARMS FEDERAL 4-62-22-6401CB  
Wellbore: Wellbore #1  
Plan: Plan #2 (ANSCHUTZ EQUUS FARMS FEDERAL 4-62-22-6401CB)  
Cade 23

WELL DETAILS: ANSCHUTZ EQUUS FARMS FEDERAL 4-62-22-6401CB

Ground Elevation:: 4579.30  
RKB Elevation: kb @ 4595.80usft (Cade 23)  
Rig Name: Cade 23



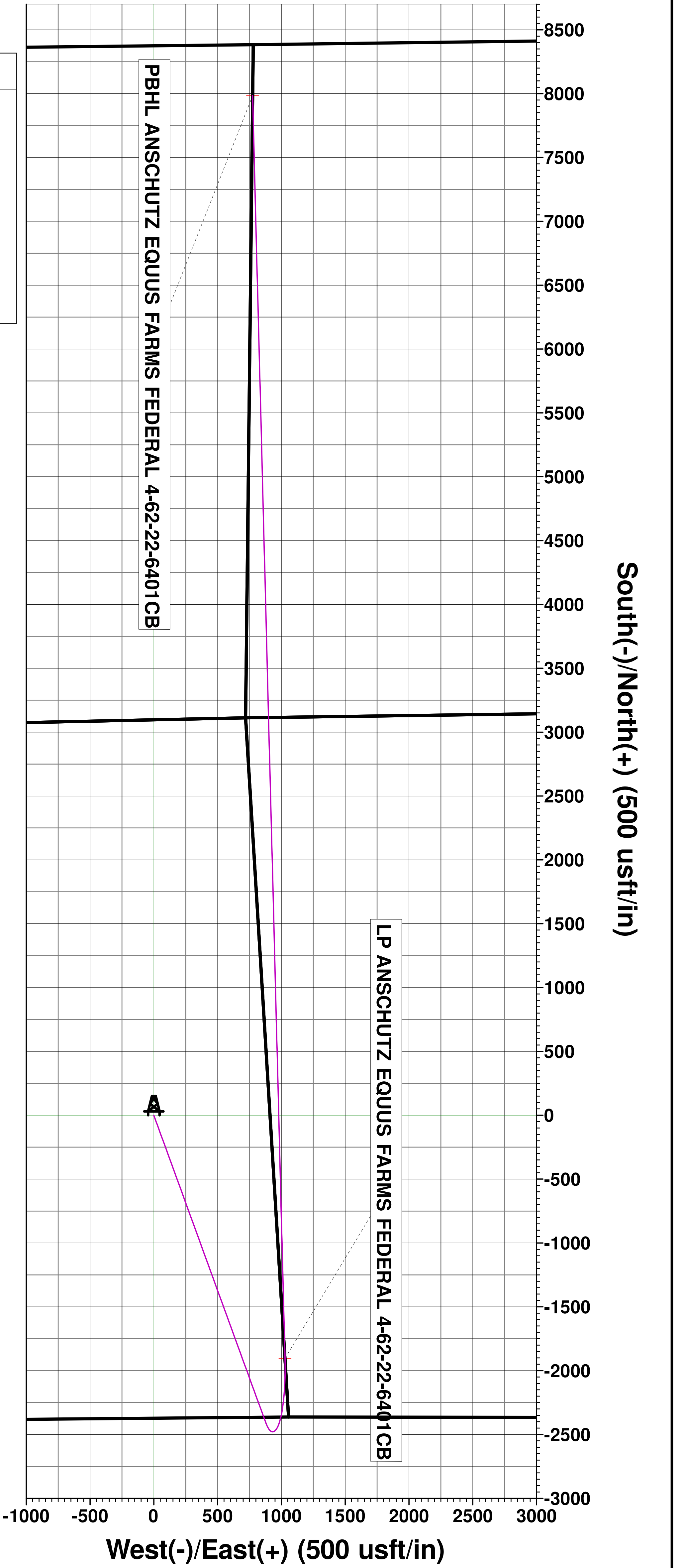
Northing	Easting	Latitude	Longitude
1353066.96	3328217.30	40.296591	-104.323286



Vertical Section at 358.53° (250 usft/in)

**M**azimuths to True North  
Magnetic North: 7.71°

Magnetic Field  
Strength: 52107.4nT  
Dip Angle: 66.78°  
Date: 11/26/2019  
Model: IGRF2015



PBHL ANSCHUTZ EQUUS FARMS FEDERAL 4-62-22-6401CB

TD at 17286.88