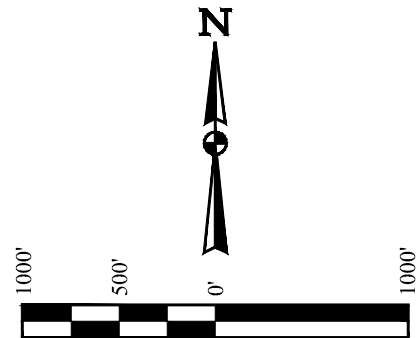
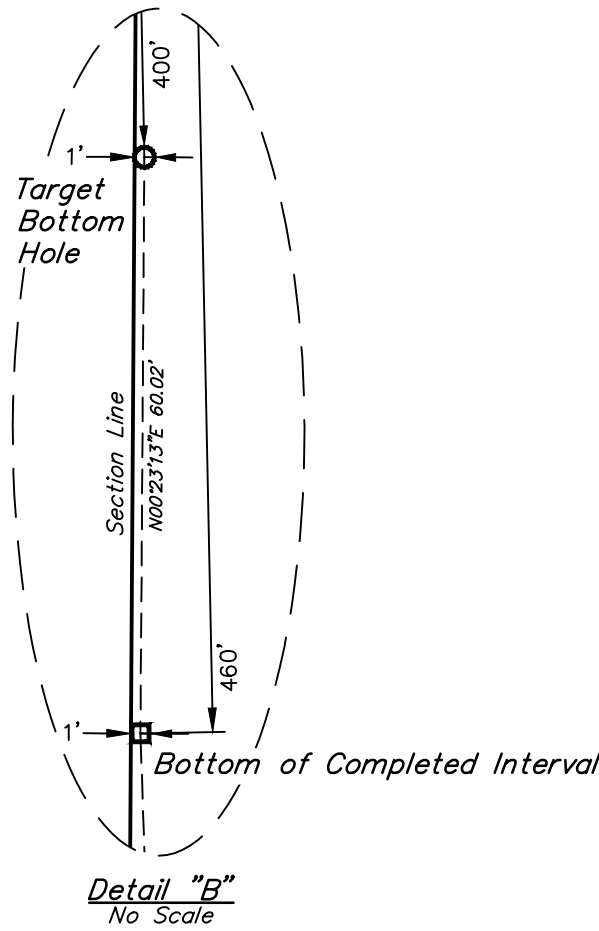
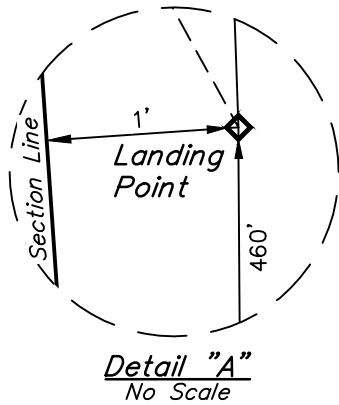
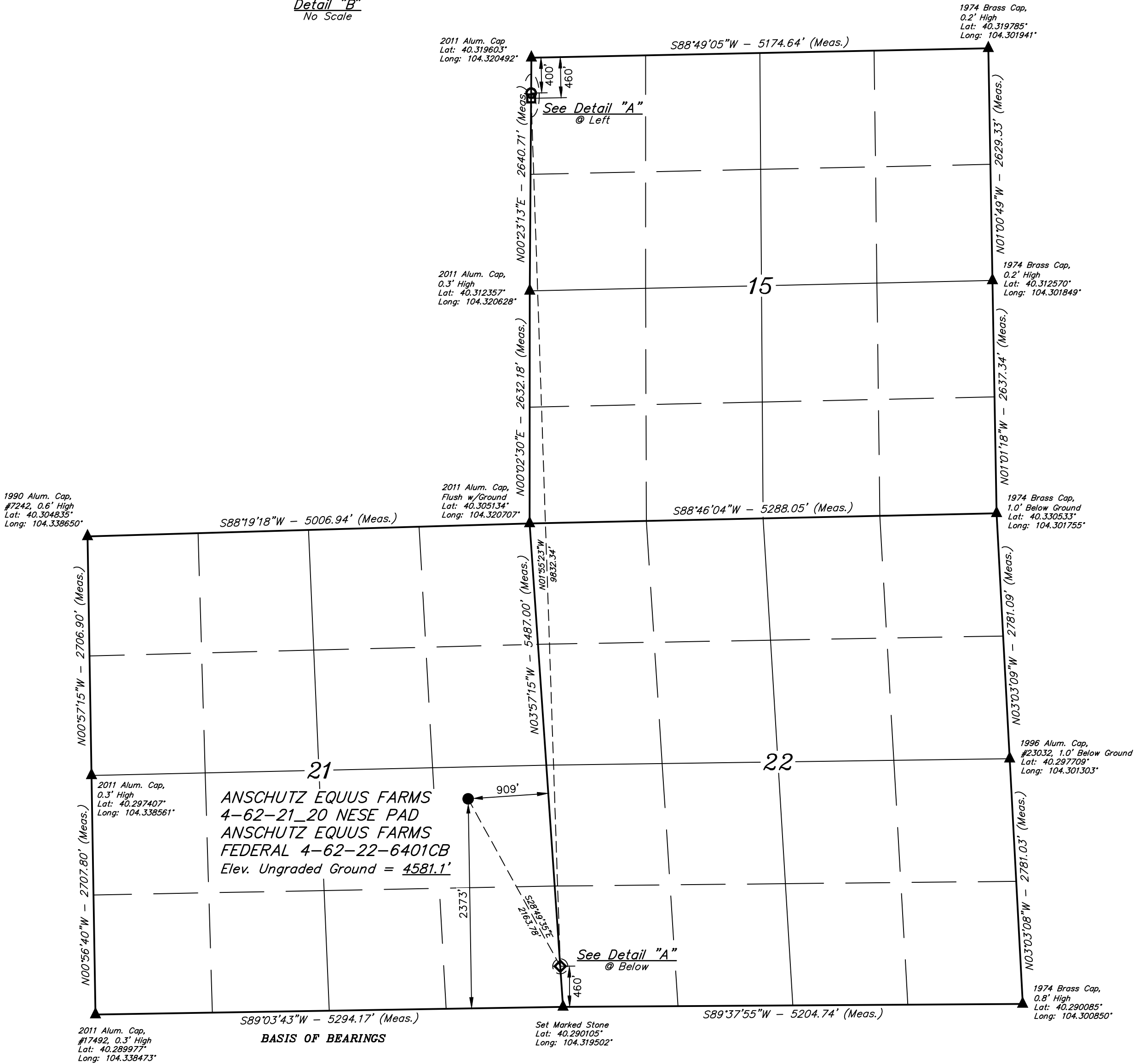


T4N, R62W, 6th P.M.

LEGEND:
● = PROPOSED WELLHEAD.
◊ = LANDING POINT.
□ = BOTTOM OF COMPLETED INTERVAL.
○ = TARGET BOTTOM HOLE.
▲ = SECTION CORNERS LOCATED. (NAD 83)
NOTE:
Distances referenced on plat to section lines are perpendicular.



BASIS OF ELEVATION
OPUS SOLUTION GENERATED NAVD 88



THIS IS TO CERTIFY THAT THE ABOVE SURVEY WAS PREPARED AND CONDUCTED IN ACCORDANCE WITH THE RULES AND REGULATIONS OF THE BOARD OF LAND SURVEYORS OF THE STATE OF UTAH, AND THAT THE SAME ARE TRUE AND CORRECT TO THE BEST OF MY KNOWLEDGE AND BELIEF.

REGISTERED LAND SURVEYOR
REGISTRATION NO. 28285
STATE OF UTAH
JUL 20 2020

REV: 2 03-27-20 C.IVIE (SURFACE LOCATION MOVE)

HIGHPOINT OPERATING CORPORATION
ANSCHUTZ EQUUS FARMS 4-62-21 20 NESE PAD
ANSCHUTZ EQUUS FARMS FEDERAL 4-62-22-6401CB
NE 1/4 SE 1/4, SECTION 21, T4N, R62W, 6th P.M.
WELD COUNTY, COLORADO



UELS, LLC
Corporate Office * 85 South 200 East
Vernal, UT 84078 * (435) 789-1017

SURVEYED BY NATE WELCH, O.R.
DRAWN BY S.F.

09-19-19
09-25-19
SCALE
1" = 1000'

WELL LOCATION PLAT

NAD 83 (SURFACE LOCATION)	NAD 83 (LANDING POINT)	NAD 83 (BTM OF COMPLETED INT.)	NAD 83 (TARGET BOTTOM HOLE)
LATITUDE = 40°1747.73" (40.296591°)	LATITUDE = 40°1728.92" (40.291367°)	LATITUDE = 40°1906.02" (40.318340°)	LATITUDE = 40°1906.62" (40.318505°)
LONGITUDE = 104°1923.83" (104.323286°)	LONGITUDE = 104°1910.56" (104.319600°)	LONGITUDE = 104°1913.84" (104.320512°)	LONGITUDE = 104°1913.83" (104.320509°)
NAD 27 (SURFACE LOCATION)	NAD 27 (LANDING POINT)	NAD 27 (BTM OF COMPLETED INT.)	NAD 27 (TARGET BOTTOM HOLE)
LATITUDE = 40°1747.80" (40.296610°)	LATITUDE = 40°1728.99" (40.291386°)	LATITUDE = 40°1906.09" (40.318359°)	LATITUDE = 40°1906.68" (40.318524°)
LONGITUDE = 104°1922.00" (104.322778°)	LONGITUDE = 104°1908.73" (104.319092°)	LONGITUDE = 104°1912.01" (104.320004°)	LONGITUDE = 104°1912.00" (104.320001°)
STATE PLANE NAD 83 (CO. NORTH)	STATE PLANE NAD 83 (CO. NORTH)	STATE PLANE NAD 83 (CO. NORTH)	STATE PLANE NAD 83 (CO. NORTH)
N: 1353066.91' E: 3328217.18'	N: 1351177.75' E: 3329270.80'	N: 1360999.46' E: 3328885.65'	N: 1361059.47' E: 3328885.72'
STATE PLANE NAD 27 (CO. NORTH)	STATE PLANE NAD 27 (CO. NORTH)	STATE PLANE NAD 27 (CO. NORTH)	STATE PLANE NAD 27 (CO. NORTH)
N: 353069.45' E: 2328367.46'	N: 351180.34' E: 2329421.09'	N: 361001.80' E: 2329035.85'	N: 361061.81' E: 2329035.91'

PDOP = 1.4