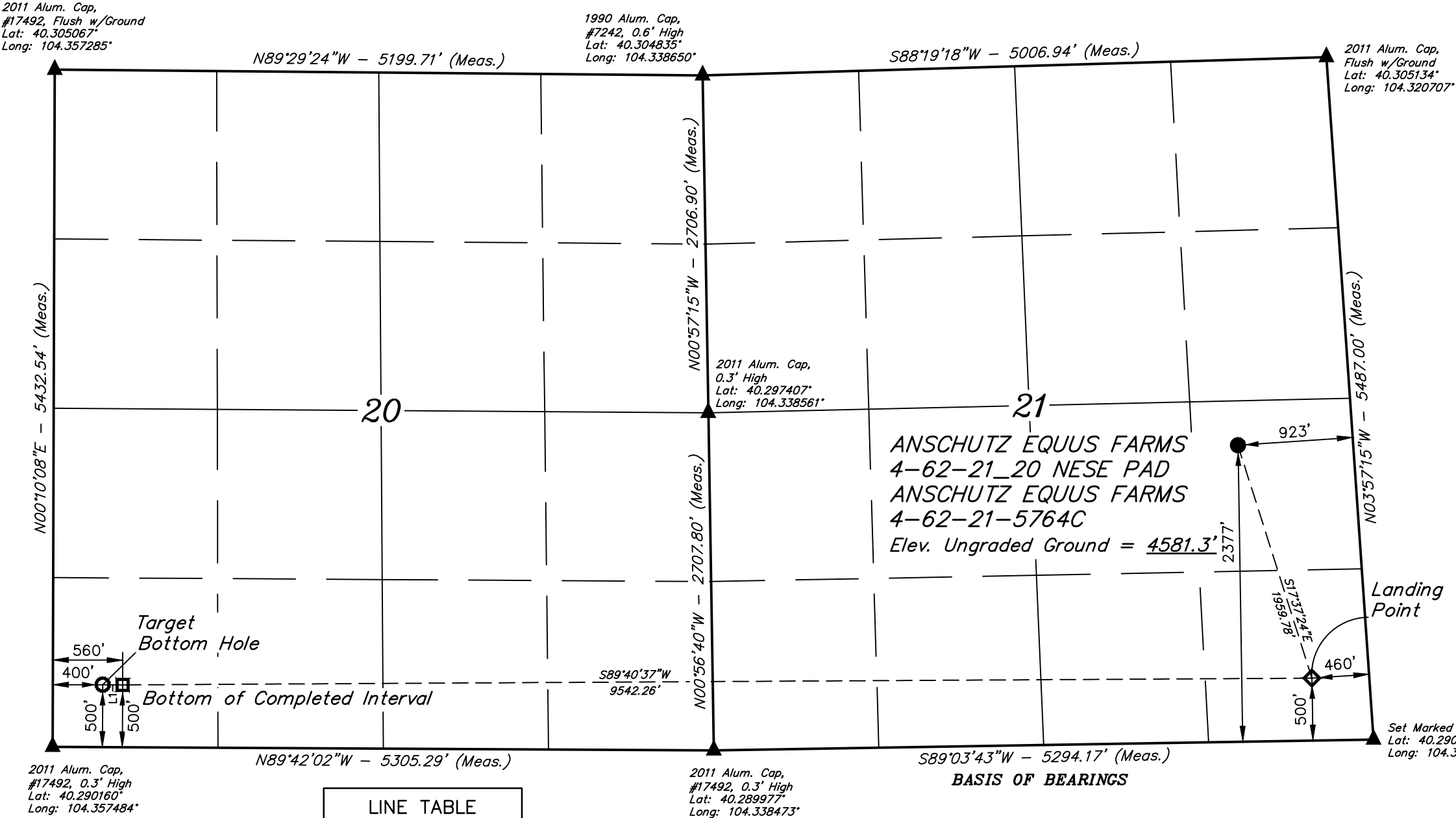
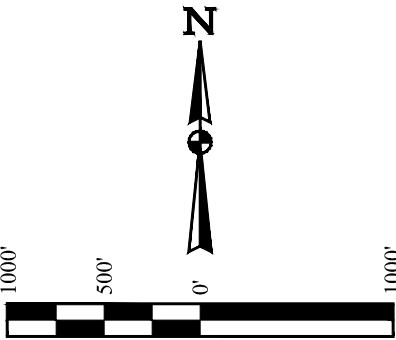


T4N, R62W, 6th P.M.

HIGHPOINT OPERATING CORPORATION

ANSCHUTZ EQUUS FARMS 4-62-21\_20 NESE PAD  
ANSCHUTZ EQUUS FARMS 4-62-21-5764C  
NE 1/4 SE 1/4, SECTION 21, T4N, R62W, 6th P.M.  
WELD COUNTY, COLORADO

BASIS OF ELEVATION  
OPUS SOLUTION GENERATED NAVD 88



LINE TABLE		
LINE	DIRECTION	LENGTH
L1	N89°42'02"W	160.00'

NOTE:  
Distances referenced  
on plat to section lines  
are perpendicular.

LEGEND:

- = PROPOSED WELLHEAD.
- ◆ = LANDING POINT.
- ◻ = BOTTOM OF COMPLETED INTERVAL.
- = TARGET BOTTOM HOLE.
- ▲ = SECTION CORNERS LOCATED. (NAD 83)

PDOP = 1.4

NAD 83 (SURFACE LOCATION)	NAD 83 (LANDING POINT)	NAD 83 (BTM OF COMPLETED INT.)	NAD 83 (TARGET BOTTOM HOLE)
LATITUDE = 40°17'47.77" (40.296603°)	LATITUDE = 40°17'29.27" (40.291465°)	LATITUDE = 40°17'29.45" (40.291513°)	LATITUDE = 40°17'29.47" (40.291518°)
LONGITUDE = 104°19'24.02" (104.323338°)	LONGITUDE = 104°19'16.55" (104.321263°)	LONGITUDE = 104°21'19.65" (104.355459°)	LONGITUDE = 104°21'21.72" (104.356032°)
NAD 27 (SURFACE LOCATION)	NAD 27 (LANDING POINT)	NAD 27 (BTM OF COMPLETED INT.)	NAD 27 (TARGET BOTTOM HOLE)
LATITUDE = 40°17'47.84" (40.296622°)	LATITUDE = 40°17'29.34" (40.291484°)	LATITUDE = 40°17'29.51" (40.291532°)	LATITUDE = 40°17'29.53" (40.291537°)
LONGITUDE = 104°19'22.19" (104.322830°)	LONGITUDE = 104°19'14.72" (104.320755°)	LONGITUDE = 104°21'17.82" (104.354950°)	LONGITUDE = 104°21'19.88" (104.355524°)
STATE PLANE NAD 83 (CO. NORTH)	STATE PLANE NAD 83 (CO. NORTH)	STATE PLANE NAD 83 (CO. NORTH)	STATE PLANE NAD 83 (CO. NORTH)
N: 1353071.12' E: 3328202.79'	N: 1351207.27' E: 3328806.45'	N: 1351099.74' E: 3319267.77'	N: 1351099.68' E: 3319107.82'
STATE PLANE NAD 27 (CO. NORTH)	STATE PLANE NAD 27 (CO. NORTH)	STATE PLANE NAD 27 (CO. NORTH)	STATE PLANE NAD 27 (CO. NORTH)
N: 353073.66' E: 2328353.06'	N: 351209.86' E: 2328956.74'	N: 351102.27' E: 2319418.05'	N: 351102.21' E: 2319258.10'

CERTIFICATE  
THIS IS TO CERTIFY THAT THE ABOVE PLAT WAS PREPARED FROM FIELD NOTES OF ACTUAL SURVEYS MADE BY ME OR UNDER MY SUPERVISION, AND THAT THE SAME ARE TRUE AND CORRECT TO THE BEST OF MY KNOWLEDGE AND BELIEF.

REGISTERED LAND SURVEYOR  
REGISTRATION NO. 28285  
STATE OF COLORADO  
JUL 28 2020

REV: 2 03-27-20 C.IVIE (SURFACE LOCATION MOVE)



UELS, LLC  
Corporate Office \* 85 South 200 East  
Vernal, UT 84078 \* (435) 789-1017

SURVEYED BY	NATE WELCH, O.R.	09-19-19	SCALE
DRAWN BY	S.F.	09-25-19	1" = 1000'

WELL LOCATION PLAT