

LEGEND:

- = PROPOSED WELLHEAD.
- ◇ = LANDING POINT.
- = BOTTOM OF COMPLETED INTERVAL.
- = TARGET BOTTOM HOLE.
- ▲ = SECTION CORNERS LOCATED. (NAD 83)

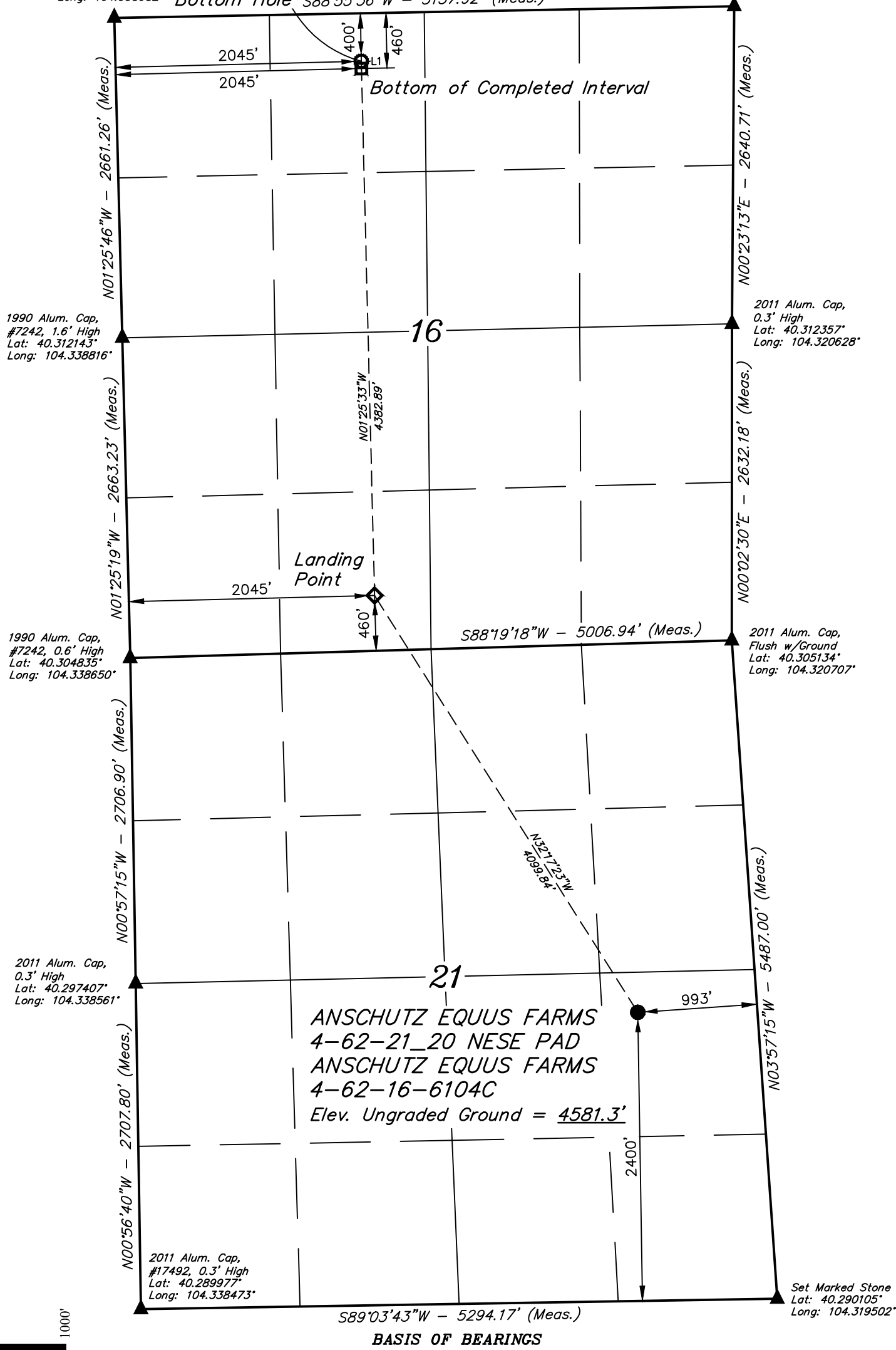
NOTE:
Distances referenced on plat to section lines are perpendicular.

T4N, R62W, 6th P.M.

Alum. Cap. #4845, 0.9' High
Lat: 40.319445°
Long: 104.338982° **Target Bottom Hole** S88°55'36"W - 5157.92' (Meas.)

2011 Alum. Cap. Lat: 40.319603°
Long: 104.320492°

LINE TABLE		
LINE	DIRECTION	LENGTH
L1	N01°25'46"W	60.00'



PDOP = 1.3



NAD 83 (SURFACE LOCATION) LATITUDE = 40°17'47.99" (40.296663°) LONGITUDE = 104°19'24.94" (104.323595°)	NAD 83 (BTM OF COMPLETED INT.) LATITUDE = 40°19'05.68" (40.318245°) LONGITUDE = 104°19'53.84" (104.331622°)
NAD 27 (SURFACE LOCATION) LATITUDE = 40°17'48.06" (40.296682°) LONGITUDE = 104°19'23.11" (104.323087°)	NAD 27 (BTM OF COMPLETED INT.) LATITUDE = 40°19'05.75" (40.318264°) LONGITUDE = 104°19'52.01" (104.331114°)
STATE PLANE NAD 83 (CO. NORTH) N: 1353092.17' E: 3328130.83'	STATE PLANE NAD 83 (CO. NORTH) N: 1360924.01' E: 3325788.24'
STATE PLANE NAD 27 (CO. NORTH) N: 353094.71' E: 2328281.10'	STATE PLANE NAD 27 (CO. NORTH) N: 360926.34' E: 2325938.43'
NAD 83 (LANDING POINT) LATITUDE = 40°18'22.39" (40.306220°) LONGITUDE = 104°19'52.86" (104.331350°)	NAD 83 (TARGET BOTTOM HOLE) LATITUDE = 40°19'06.28" (40.318410°) LONGITUDE = 104°19'53.85" (104.331626°)
NAD 27 (LANDING POINT) LATITUDE = 40°18'22.46" (40.306239°) LONGITUDE = 104°19'51.03" (104.330842°)	NAD 27 (TARGET BOTTOM HOLE) LATITUDE = 40°19'06.34" (40.318429°) LONGITUDE = 104°19'52.03" (104.331118°)
STATE PLANE NAD 83 (CO. NORTH) N: 1356544.53' E: 3325921.91'	STATE PLANE NAD 83 (CO. NORTH) N: 1360983.97' E: 3325786.40'
STATE PLANE NAD 27 (CO. NORTH) N: 356546.97' E: 2326072.14'	STATE PLANE NAD 27 (CO. NORTH) N: 360986.29' E: 2325936.60'

CERTIFICATE OF REGISTRATION
THIS IS TO CERTIFY THAT THE ABOVE PLAT WAS PREPARED FROM FIELD NOTES OF ACTUAL SURVEYS MADE BY ME OR UNDER MY SUPERVISION AND THAT THE SAME ARE TRUE AND CORRECT TO THE BEST OF MY KNOWLEDGE AND BELIEF.



REV: 2 03-27-20 C.IVIE (SURFACE LOCATION MOVE)

BASIS OF ELEVATION
OPUS SOLUTION GENERATED NAVD 88



UELS, LLC
Corporate Office * 85 South 200 East
Vernal, UT 84078 * (435) 789-1017



HIGHPOINT OPERATING CORPORATION
ANSCHUTZ EQUUS FARMS 4-62-21 20 NESE PAD
ANSCHUTZ EQUUS FARMS 4-62-16-6104C
NE 1/4 SE 1/4, SECTION 21, T4N, R62W, 6th P.M.
WELD COUNTY, COLORADO

SURVEYED BY	NATE WELCH, O.R.	09-19-19	SCALE
DRAWN BY	S.F.	09-25-19	1" = 1000'

WELL LOCATION PLAT