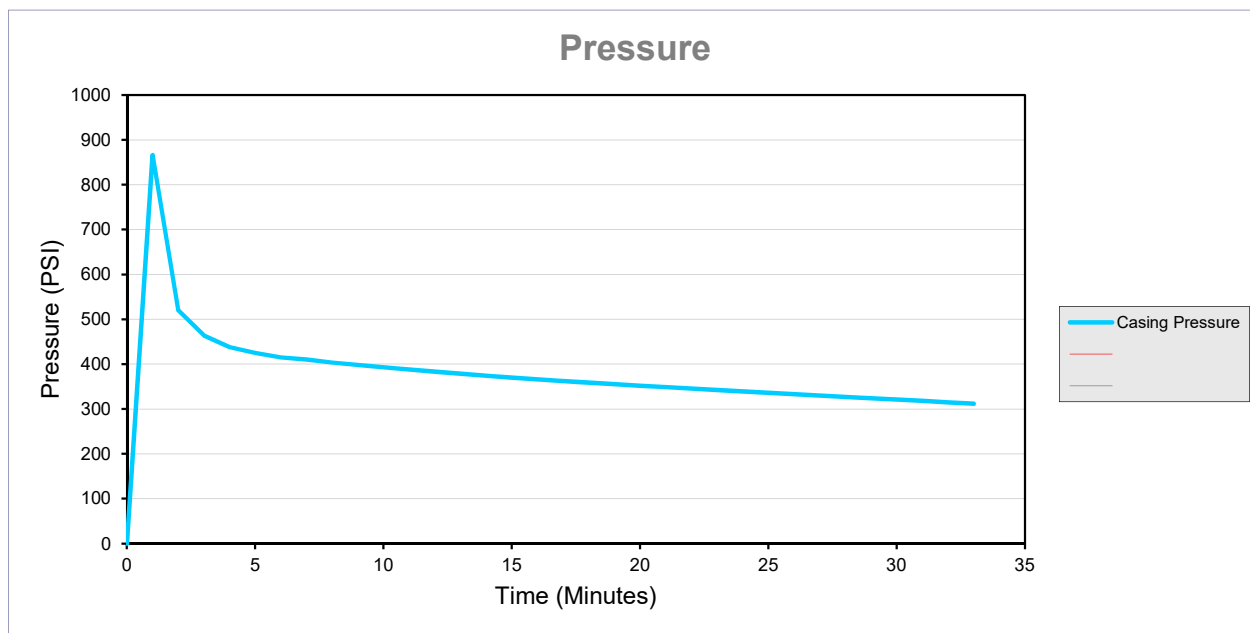


Data Collection Report

Gauge Information	
Serial Number	808468
Model	15KPSIXP2I
Message Store	-----
Units	PSI

Run Info	
Start Time	8/12/20 1:59:47 PM
Stop Time	8/12/20 2:36:01 PM
Logging Interval	60
Lease: LILLI UNIT 08-01 API: 05-123-13949	



Serial Number 808468
 Model 15KPSIXP2I
 Units PSI
 Firmware Version R0324 Message Store -----
 Run Index 16
 Logging Type Actual
 Logging Interval 60
 Start Time 8/12/2020 13:59
 Stop Time 8/12/2020 14:36
 Time Casing Pressure

Pressure (PSI)

Time	Event	Event Date	Time (hours)	Time (minutes)	Elapsed Time	Timestamp
0	Battery OK		0.00	0.00	0:00:00	8/12/20 13:59:47
0	Logging Interval, 60		0.00	0.00	0:00:00	8/12/20 13:59:47
0	Tare, 1		0.00	0.00	0:00:00	8/12/20 13:59:47
0			0.00	0.00	0:00:00	8/12/20 13:59:47
60			0.02	1.00	0:01:00	8/12/20 14:00:47
120			0.03	2.00	0:02:00	8/12/20 14:01:47
180			0.05	3.00	0:03:00	8/12/20 14:02:47
240			0.07	4.00	0:04:00	8/12/20 14:03:47
300			0.08	5.00	0:05:00	8/12/20 14:04:47
360			0.10	6.00	0:06:00	8/12/20 14:05:47
420			0.12	7.00	0:07:00	8/12/20 14:06:47
480			0.13	8.00	0:08:00	8/12/20 14:07:47
540			0.15	9.00	0:09:00	8/12/20 14:08:47
600			0.17	10.00	0:10:00	8/12/20 14:09:47
660			0.18	11.00	0:11:00	8/12/20 14:10:47
720			0.20	12.00	0:12:00	8/12/20 14:11:47
780			0.22	13.00	0:13:00	8/12/20 14:12:47
840			0.23	14.00	0:14:00	8/12/20 14:13:47
900			0.25	15.00	0:15:00	8/12/20 14:14:47
960			0.27	16.00	0:16:00	8/12/20 14:15:47
1020			0.28	17.00	0:17:00	8/12/20 14:16:47
1080			0.30	18.00	0:18:00	8/12/20 14:17:47
1140			0.32	19.00	0:19:00	8/12/20 14:18:47
1200			0.33	20.00	0:20:00	8/12/20 14:19:47
1260			0.35	21.00	0:21:00	8/12/20 14:20:47
1320			0.37	22.00	0:22:00	8/12/20 14:21:47
1380			0.38	23.00	0:23:00	8/12/20 14:22:47
1440			0.40	24.00	0:24:00	8/12/20 14:23:47
1500			0.42	25.00	0:25:00	8/12/20 14:24:47
1560			0.43	26.00	0:26:00	8/12/20 14:25:47
1620			0.45	27.00	0:27:00	8/12/20 14:26:47
1680			0.47	28.00	0:28:00	8/12/20 14:27:47
1740			0.48	29.00	0:29:00	8/12/20 14:28:47
1800			0.50	30.00	0:30:00	8/12/20 14:29:47
1860			0.52	31.00	0:31:00	8/12/20 14:30:47
1920			0.53	32.00	0:32:00	8/12/20 14:31:47
1980			0.55	33.00	0:33:00	8/12/20 14:32:47