

# FRITZLER FEDERAL 41-22 STRIP LOG

2016-01-07 17:24

Tension (lbF)

FEET

1:240

3' AMPLITUDE (mV)

0.0 100.0

FREE PIPE TIME (μs)

200.0 1200.0

MIN RADIAL AMP (mV)

0.0 100.0

RADIAL MAPPING (mV)

0.00 10.00

0.00 1000.00

COLLAR LOCATOR

0.0 10.0

AMPLITUDE X 5 (mV) 5'

0.0 20.0

VARIABLE DENSITY (μs)

200.00 1200.00

MAX RADIAL AMP (mV)

0.0 100.0

3' TRAVEL TIME (μs)

800.0 150.0

AVG RADIAL AMP (mV)

0.0 100.0

GAMMA RAY

0.0 120.0

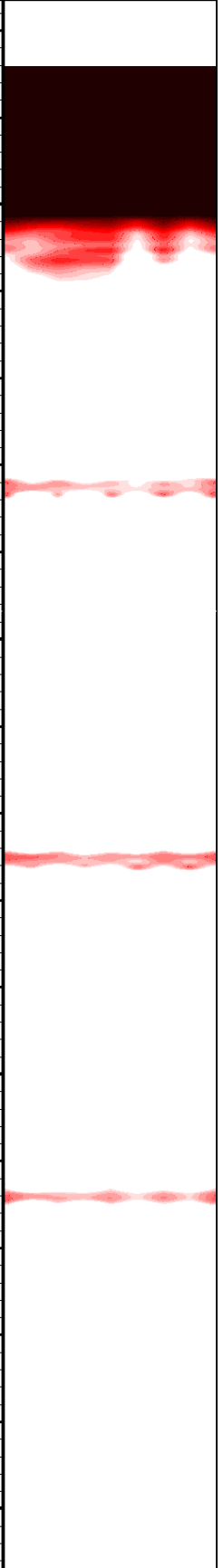
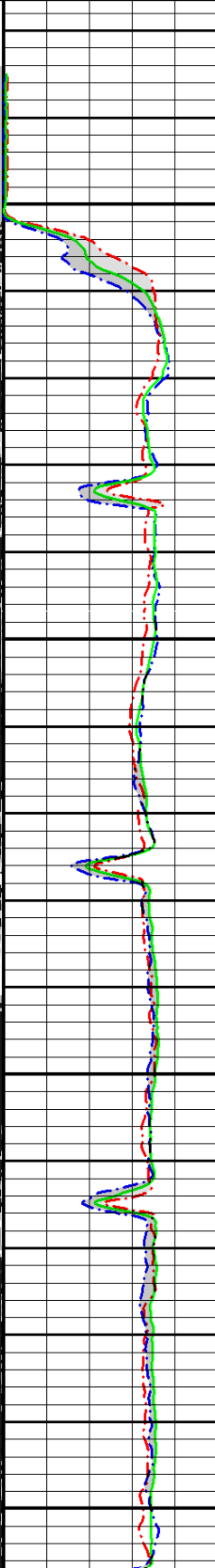
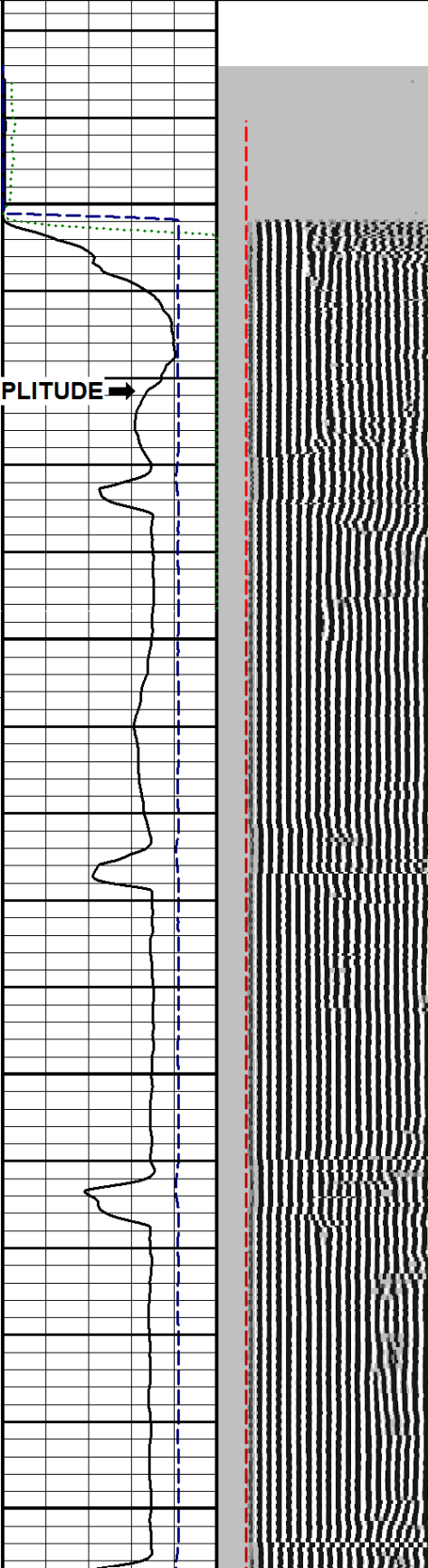
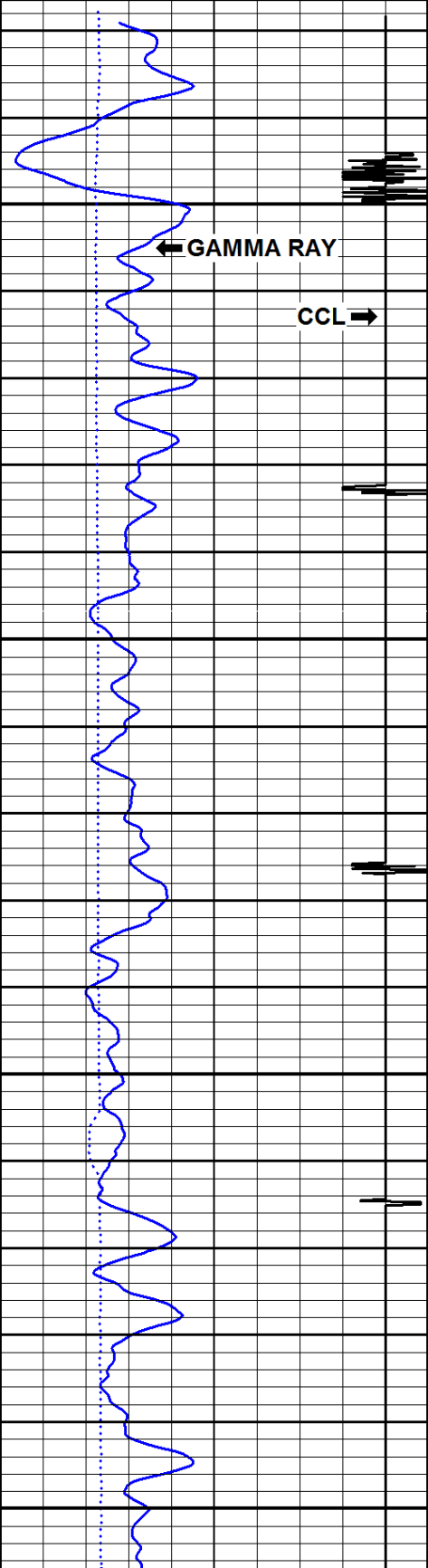
Pass No. 16

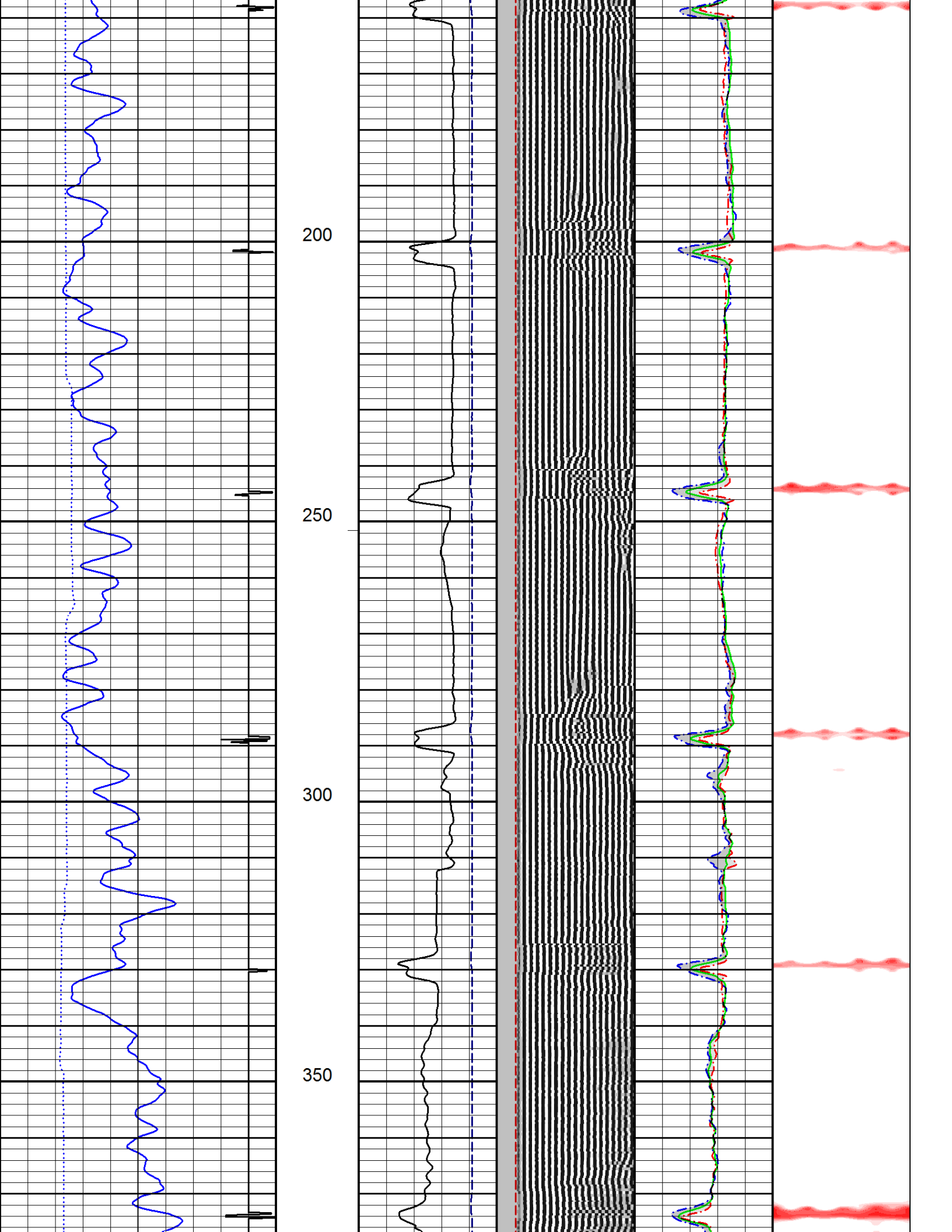
Logging Up  
Shutin

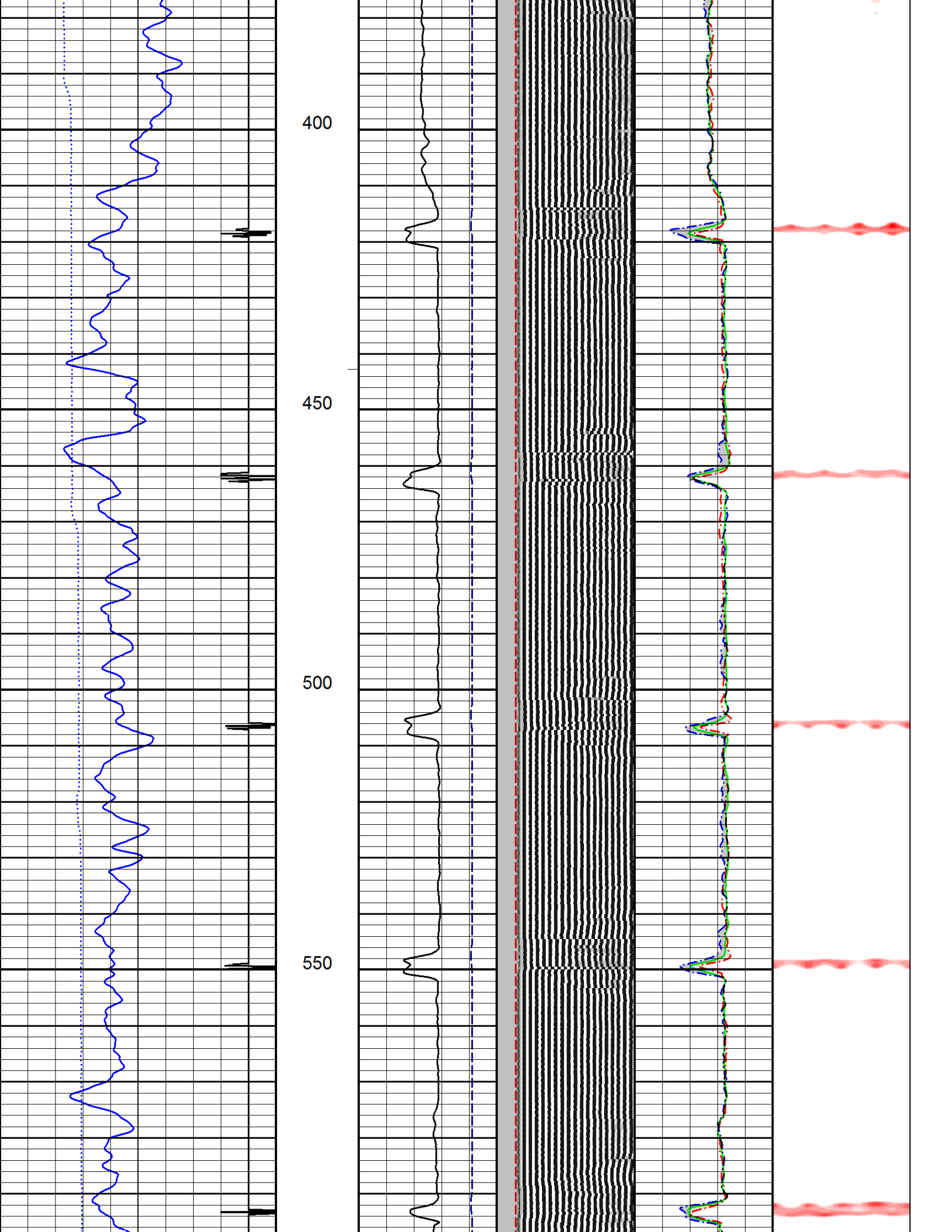
File FINAL.pre

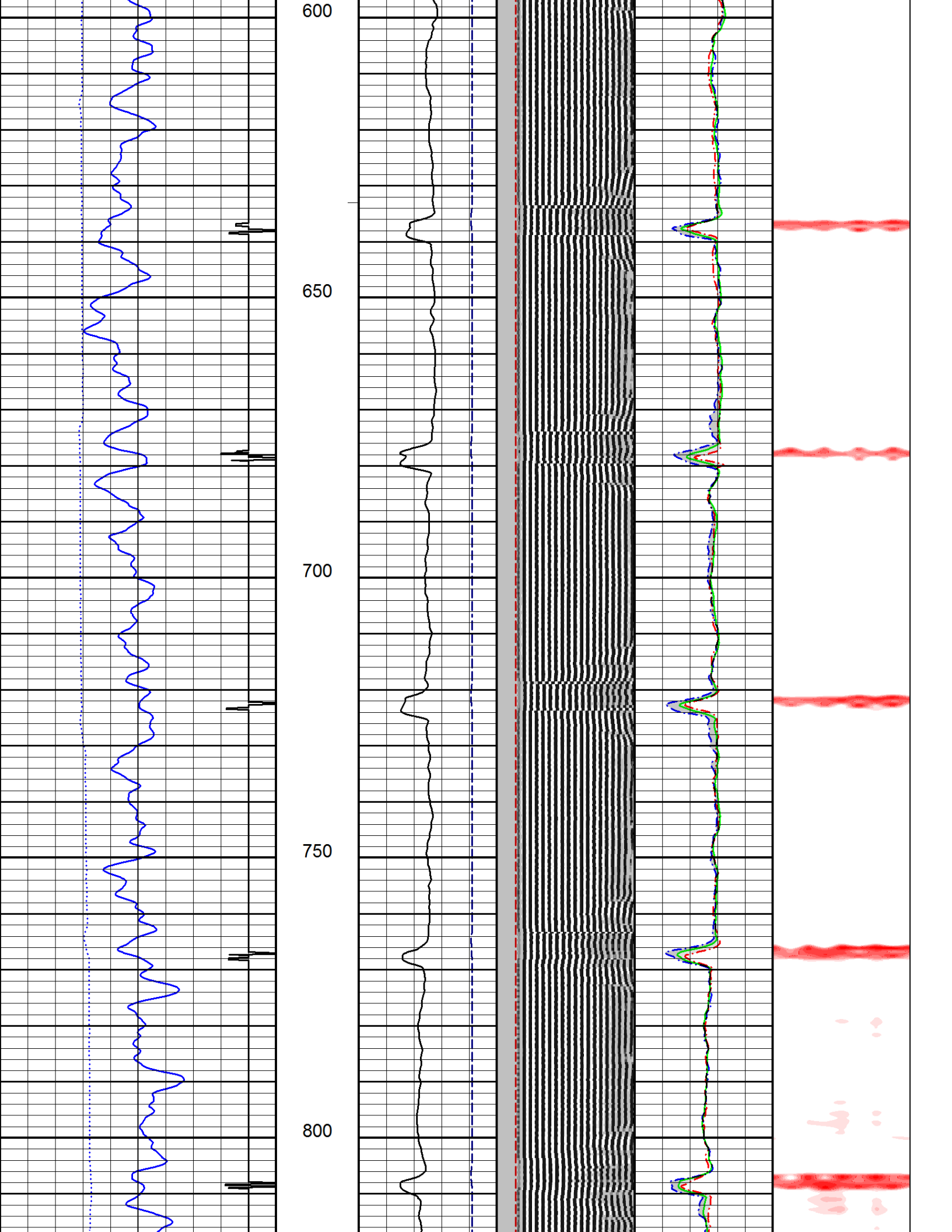
-23.50

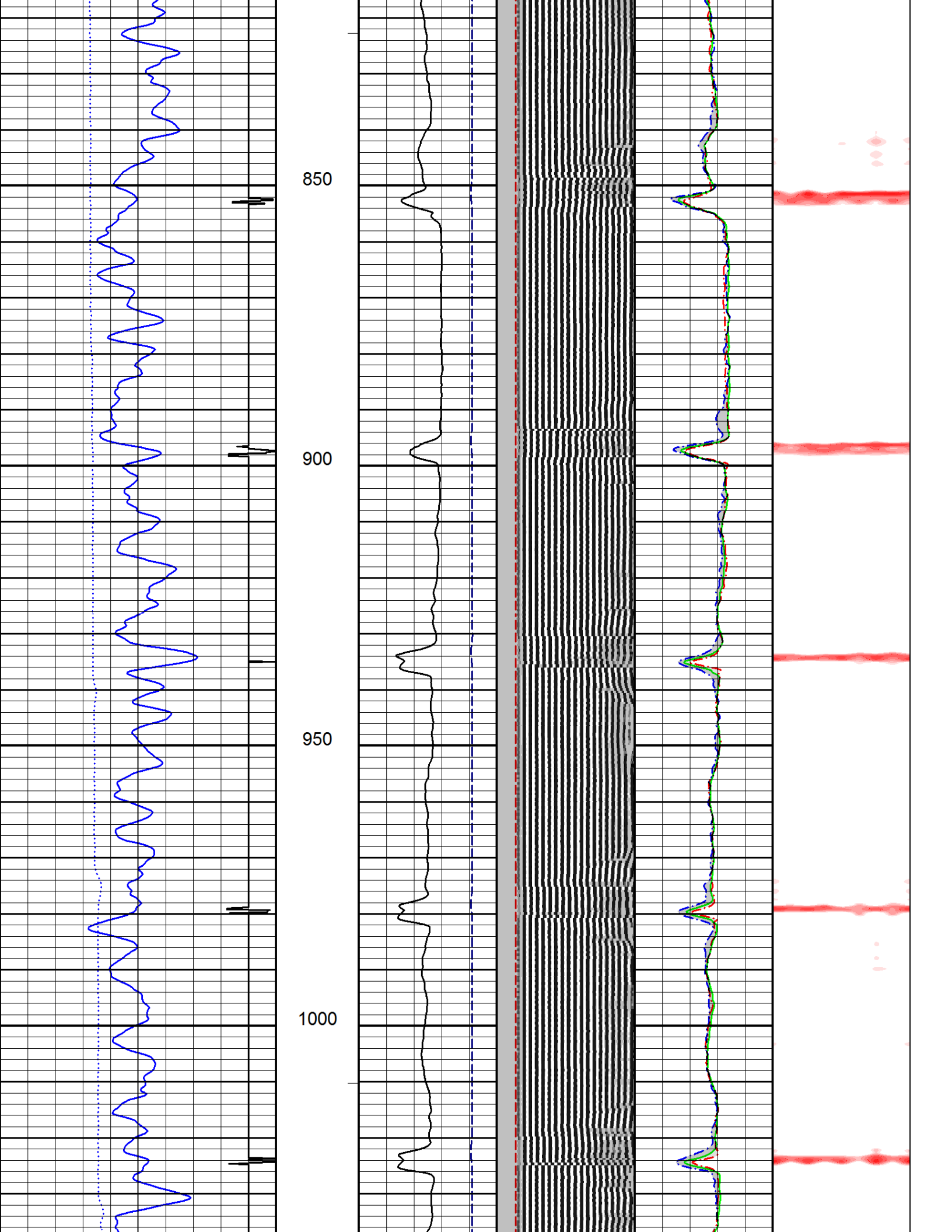
130503

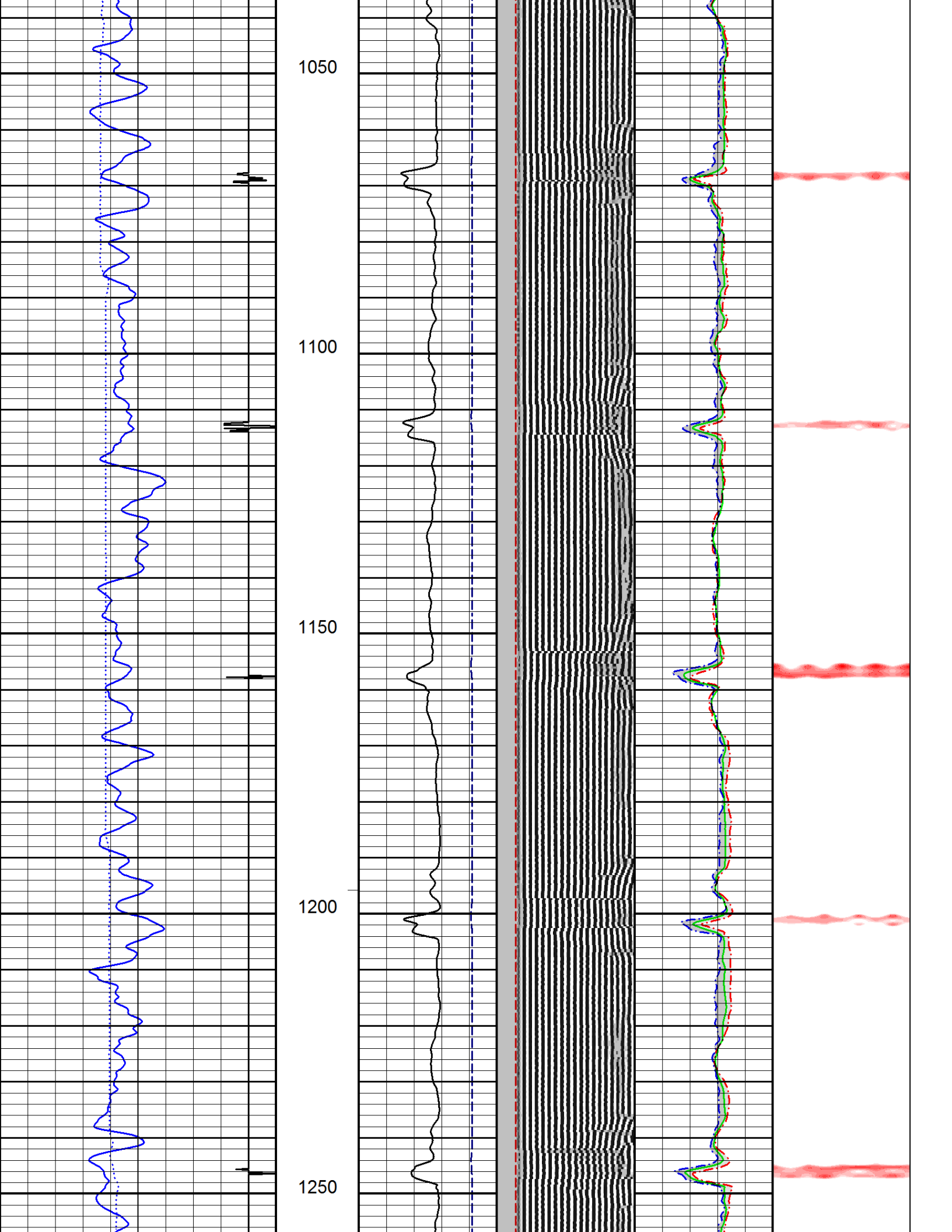


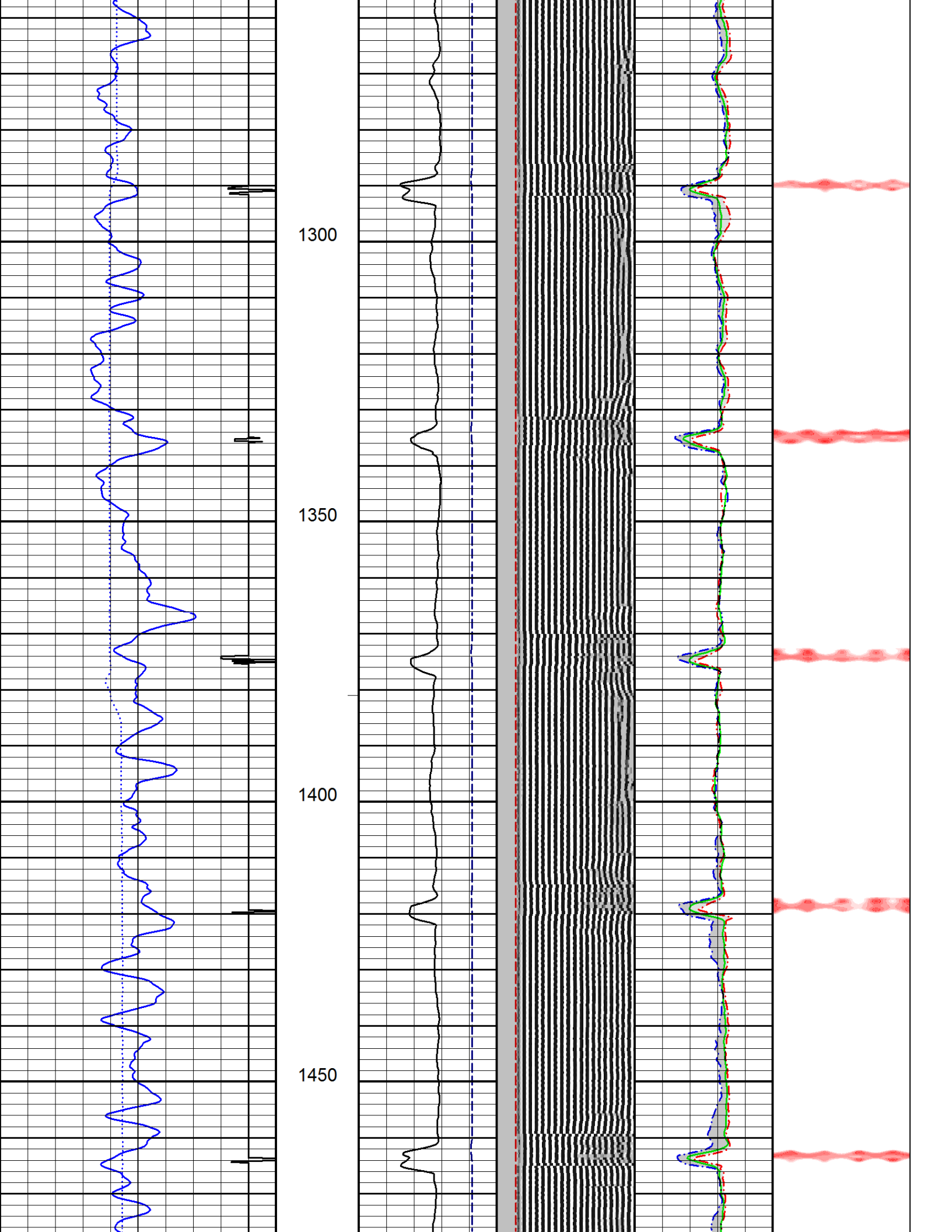


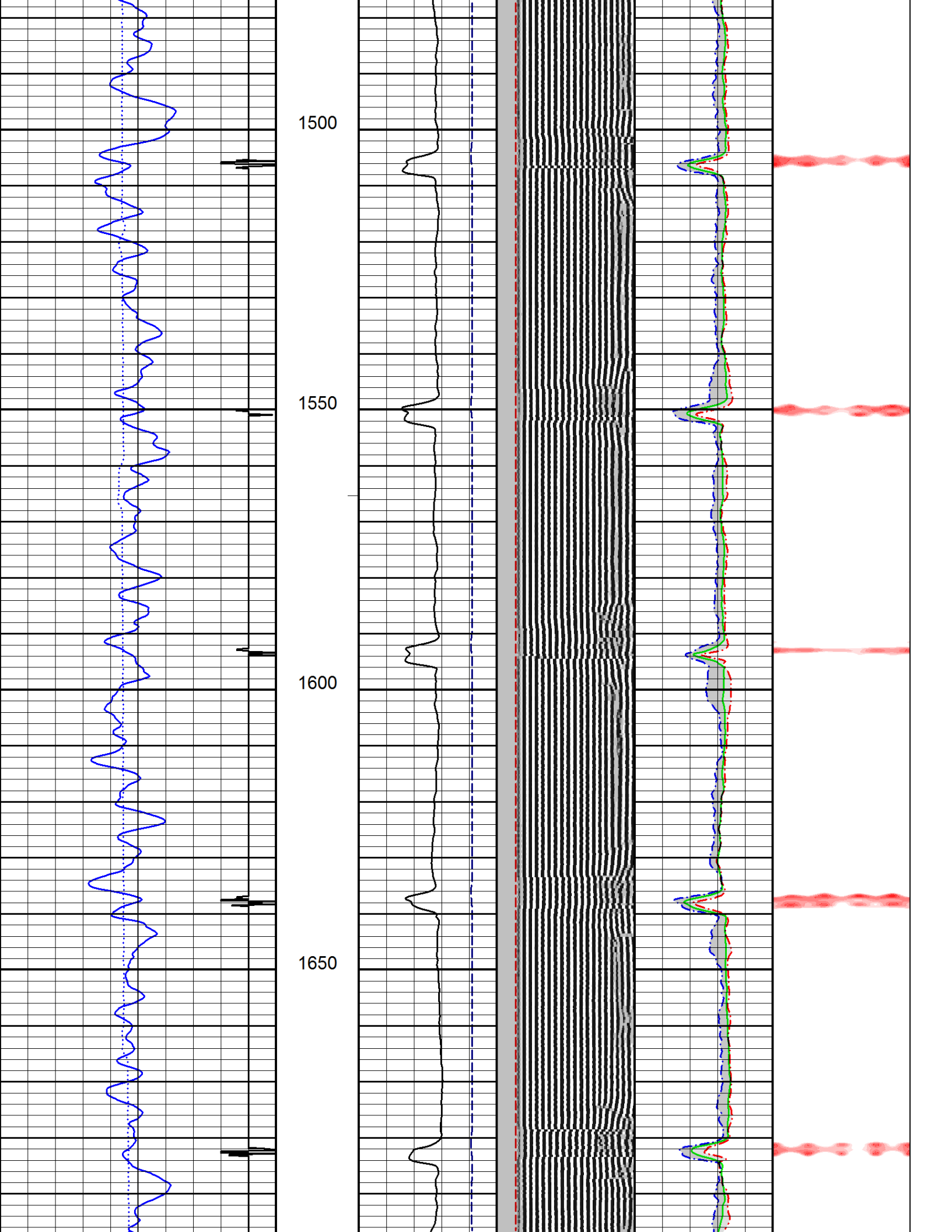


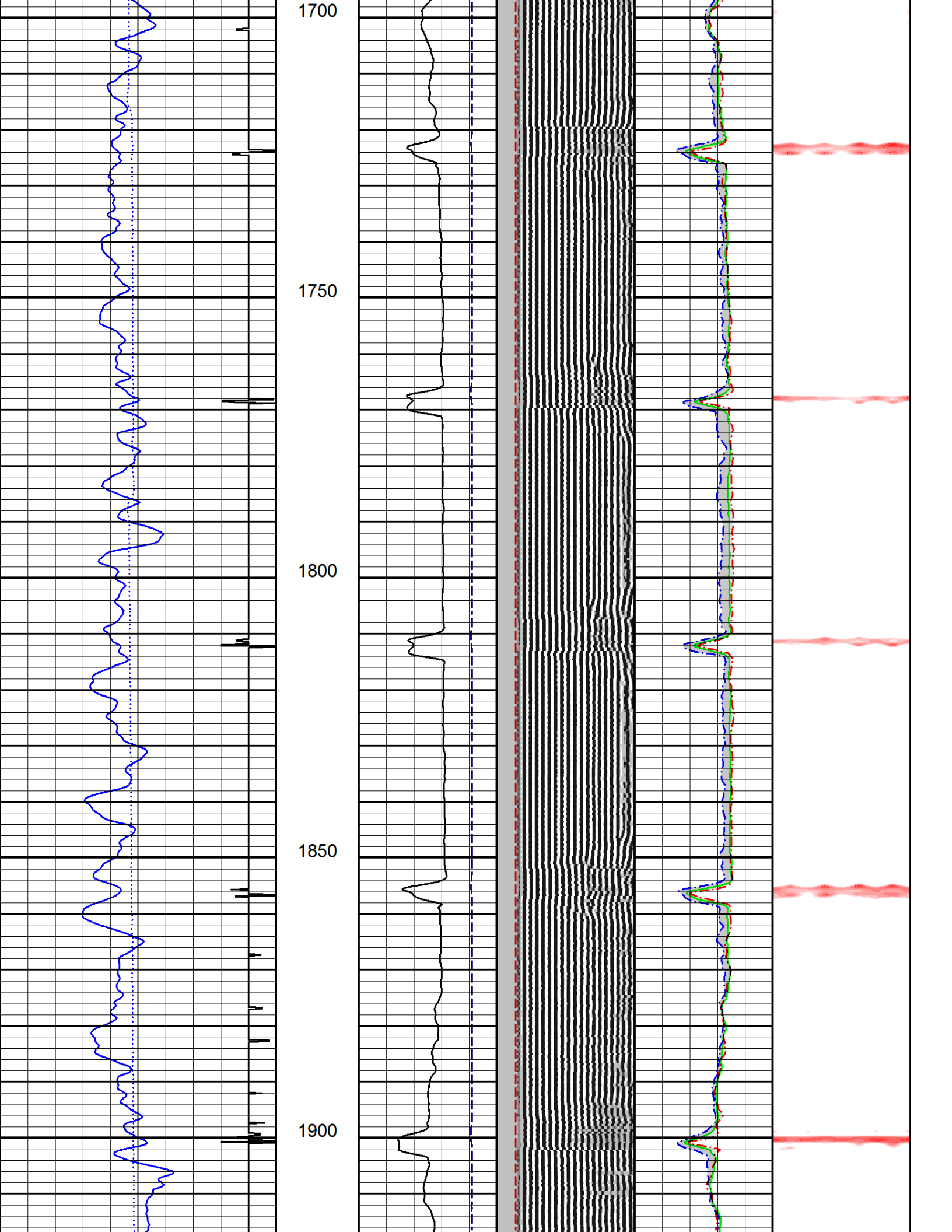


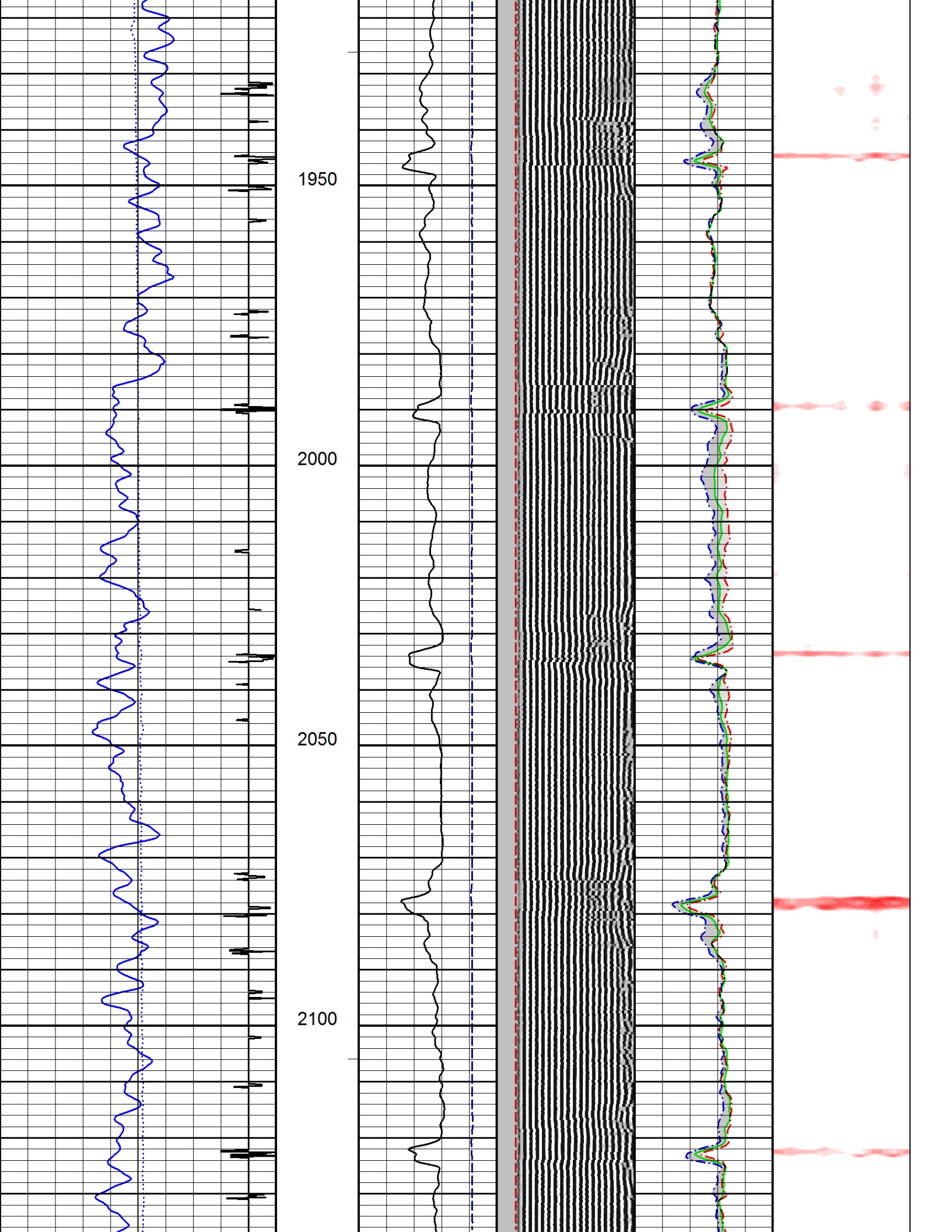


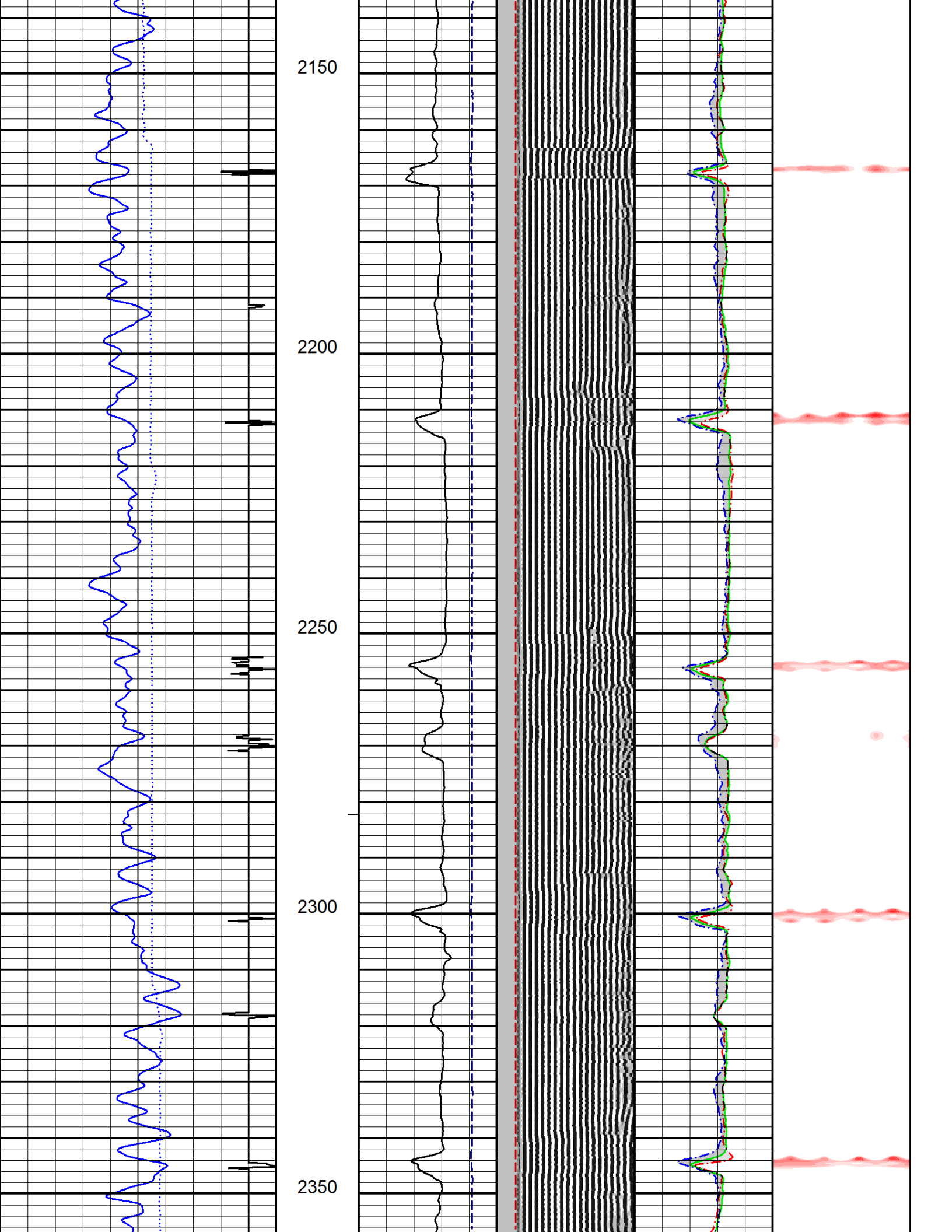


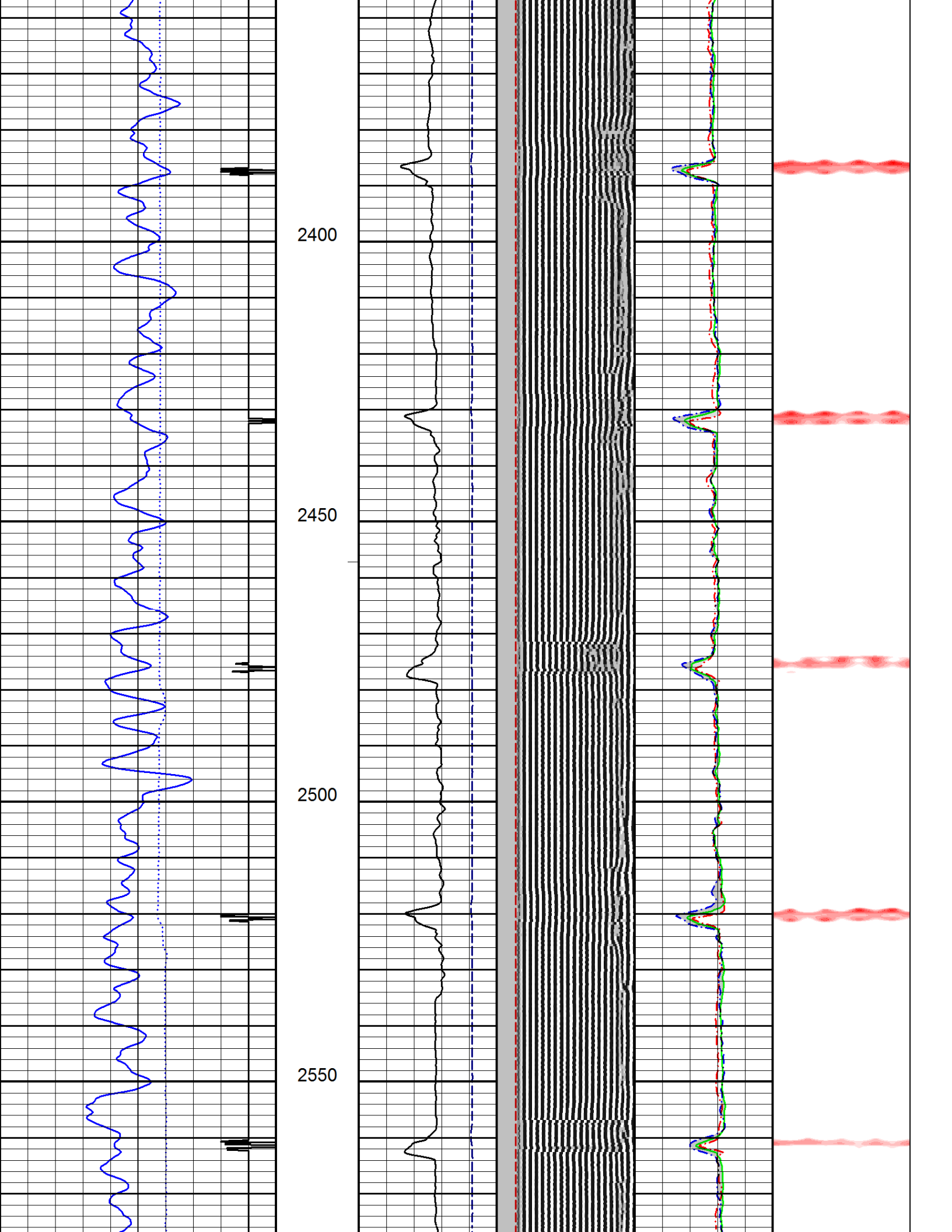


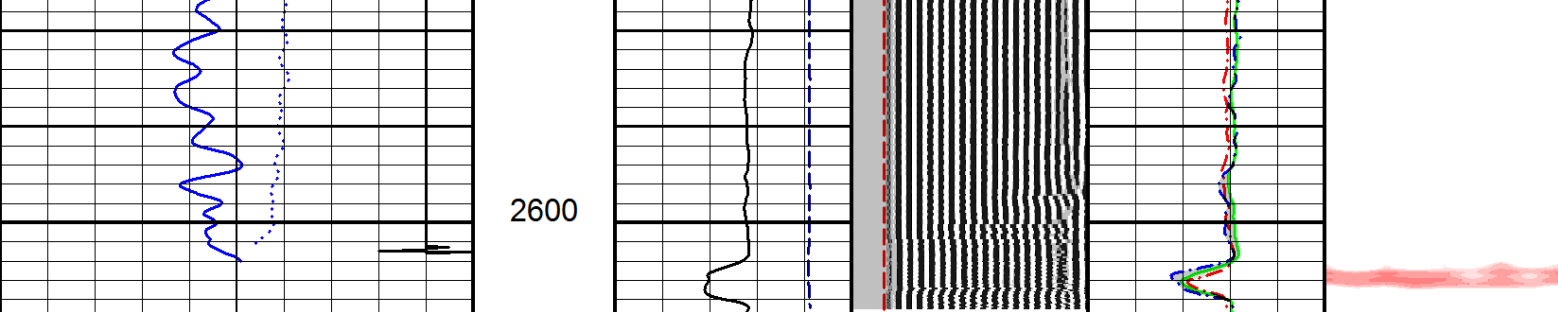












2600

2016-01-07 17:24	
Tension (lbF)	
0.00	1000.00
COLLAR LOCATOR	
0.0	10.0
GAMMA RAY	
0.0	120.0
Pass No. 16	

2609.80

FEET  
1:240

3' AMPLITUDE (mV)	FREE PIPE TIME (μs)	MIN RADIAL AMP (mV)	RADIAL MAPPING (mV)
0.0 100.0	200.0 1200.0	0.0 100.0	0.00 10.00
AMPLITUDE X 5 (mV)	VARIABLE DENSITY (μs)	MAX RADIAL AMP (mV)	
0.0 20.0	200.00 1200.00	0.0 100.0	
3' TRAVEL TIME (μs)		AVG RADIAL AMP (mV)	
800.0 150.0		0.0 100.0	

Logging Up  
Shutin

File FINAL.pre

130503