

# *Inspection Photos*

*Loc#149002*

*Operator: Chevron*

*Insp #: 692402436*

*Insp Date: 8/5/2020*



Photo#1:  
Views at entry into Location.

August 5, 2020



Photo#2:  
Cut slope that will need to be moderated/vegetated.



Photo#3:  
Noxious weeds on site.

August 5, 2020



**COLORADO**  
Oil & Gas Conservation  
Commission  
Department of Natural Resources

Inspection Photos: Chevron Wilson Creek Land Farm Loc#149002





Photo#4:  
Excavated Material in background.



Photo#5:  
Fill Material.

August 5, 2020



Photo#6:  
Excavated area.

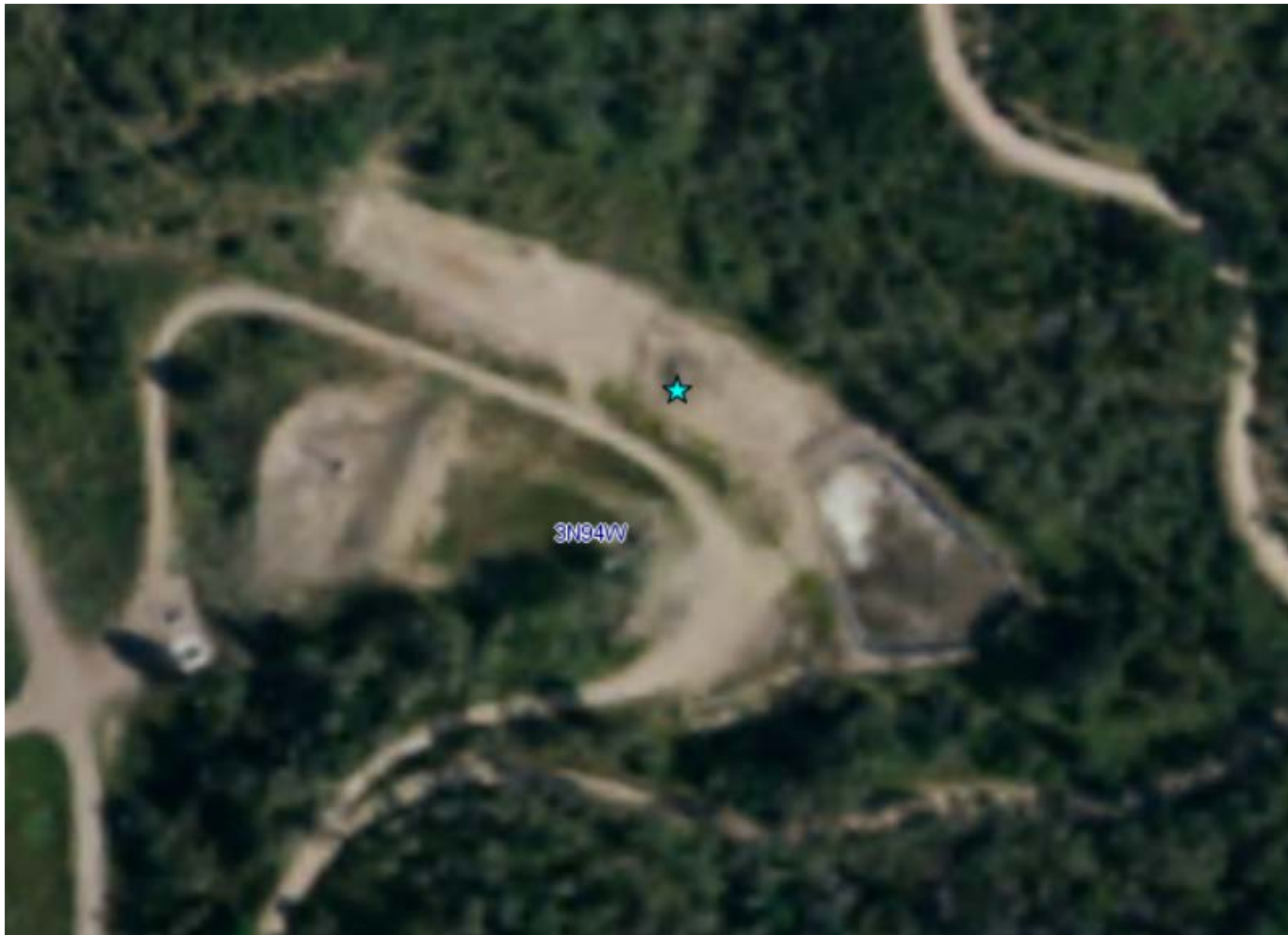
August 5, 2020



**COLORADO**  
Oil & Gas Conservation  
Commission  
Department of Natural Resources

Inspection Photos: Chevron Wilson Creek Land Farm Loc#149002





Photo#7:

GE Aerial view of Location. .

August 5, 2020