



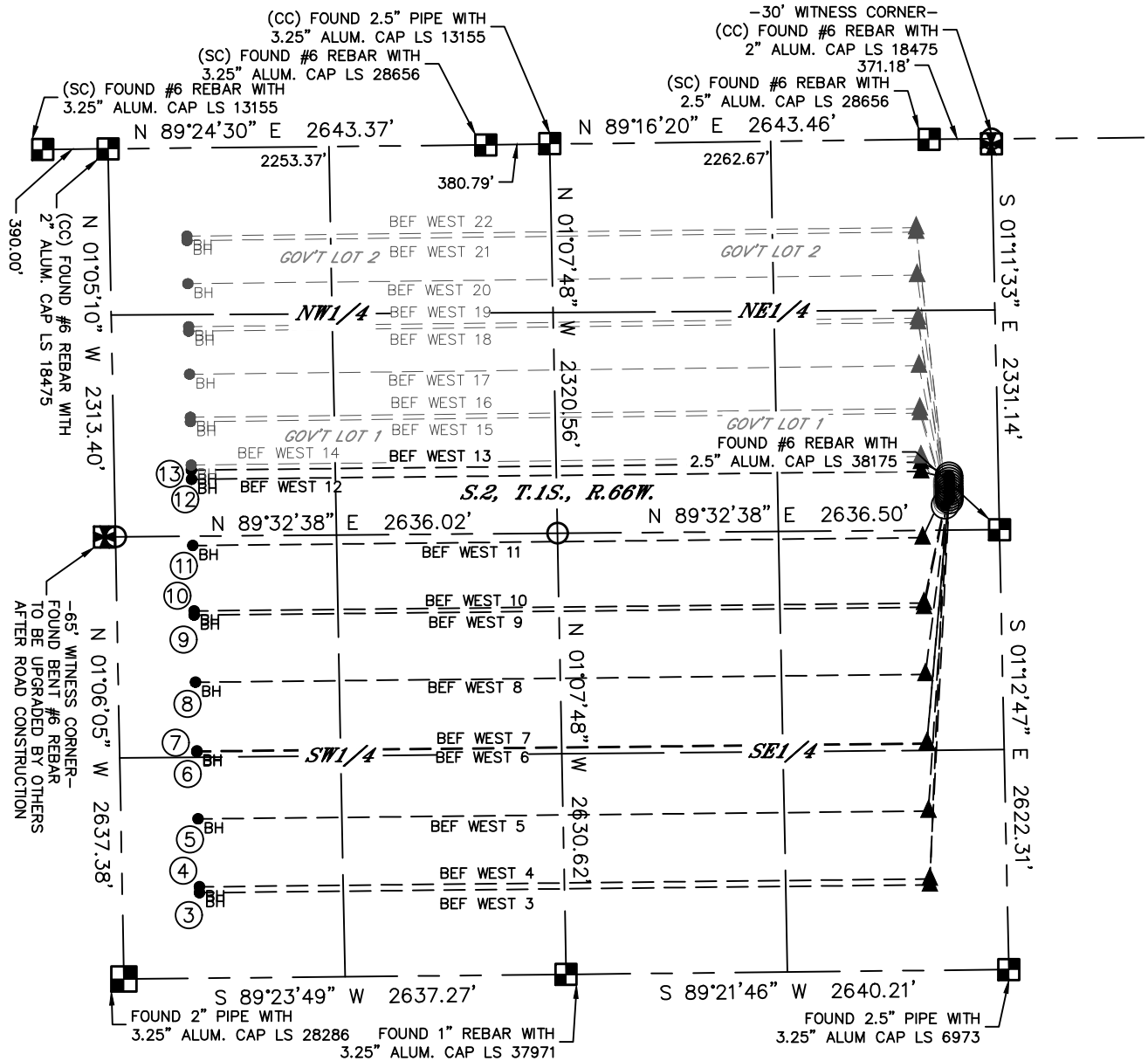
Lat40°, Inc. 6250 W. 10th Street, Unit 2, Greeley, CO 970-515-5294

MULTI-WELL PLAN

BEF 1S66W2 PAD

SECTION: 2
TOWNSHIP: 1S
RANGE: 66W
6TH. P.M.
ADAMS COUNTY, CO

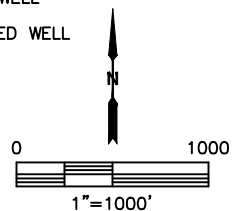
THIS MAP DOES NOT REPRESENT A BOUNDARY SURVEY



#	WELL NAME	BHL FOOTAGE				BHL LAT°	BHL LONG°	BHL S-T-R
3	BEF WEST 3	510	FSL	460	FWL	39.98831	-104.75063	2-1S-66
4	BEF WEST 4	545	FSL	460	FWL	39.98841	-104.75064	2-1S-66
5	BEF WEST 5	950	FSL	460	FWL	39.98952	-104.75065	2-1S-66
6	BEF WEST 6	1350	FSL	460	FWL	39.99062	-104.75067	2-1S-66
7	BEF WEST 7	1355	FSL	460	FWL	39.99063	-104.75067	2-1S-66
8	BEF WEST 8	1765	FSL	460	FWL	39.99175	-104.75068	2-1S-66
9	BEF WEST 9	2165	FSL	460	FWL	39.99285	-104.75070	2-1S-66
10	BEF WEST 10	2190	FSL	460	FWL	39.99292	-104.75070	2-1S-66
11	BEF WEST 11	2580	FSL	460	FWL	39.99399	-104.75071	2-1S-66
12	BEF WEST 12	1975	FNL	460	FWL	39.99507	-104.75073	2-1S-66
13	BEF WEST 13	1920	FNL	460	FWL	39.99523	-104.75073	2-1S-66

LEGEND

- = ALIQUOT MONUMENT AS DESCRIBED
- = CALCULATED POSITION
- = SURFACE HOLE LOCATION (SHL)
- ▲ = ENTRY POINT LOCATION (EP)
- = BOTTOM HOLE LOCATION (BHL)
- ⊙ = EXISTING WELL
- ⊙ = ABANDONED WELL



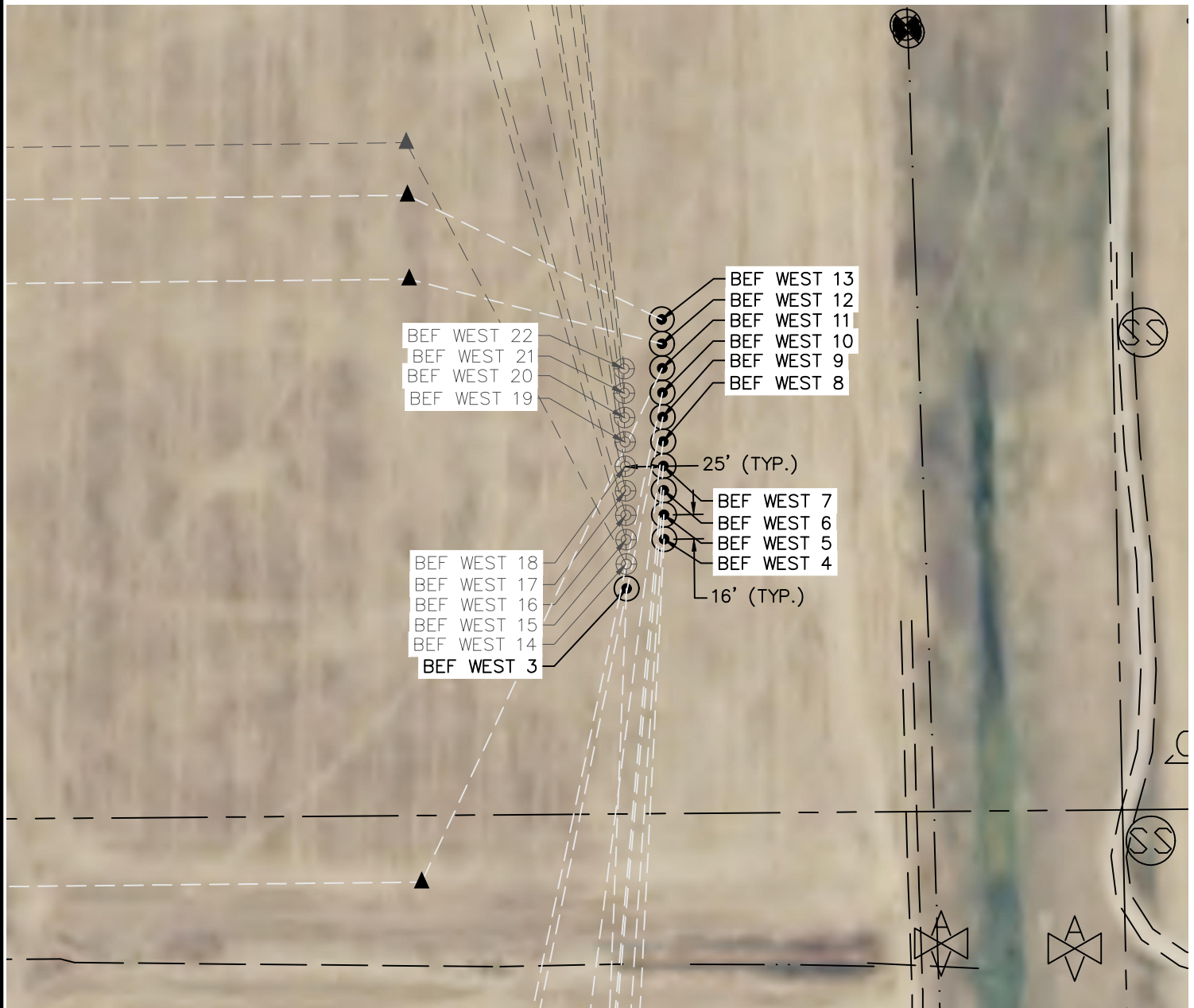


Lat40°, Inc. 6250 W. 10th Street, Unit 2, Greeley, CO 970-515-5294

MULTI-WELL PLAN

BEF 1S66W2 PAD

SECTION: 2
TOWNSHIP: 1S
RANGE: 66W
6TH. P.M.
ADAMS COUNTY, CO



#	WELL NAME	SHL FOOTAGE				SHL LAT°	SHL LONG°	SHL PDOP	SHL ELEV (FT.)	SHL 1/4/1/4	SHL S-T-R
3	BEF WEST 3	2184	FNL	322	FEL	39.99454	-104.73470	2.0	5047	SENE	2-1S-66
4	BEF WEST 4	2151	FNL	297	FEL	39.99463	-104.73461	1.9	5048	SENE	2-1S-66
5	BEF WEST 5	2136	FNL	296	FEL	39.99467	-104.73461	1.9	5048	SENE	2-1S-66
6	BEF WEST 6	2120	FNL	296	FEL	39.99472	-104.73461	1.9	5048	SENE	2-1S-66
7	BEF WEST 7	2104	FNL	296	FEL	39.99476	-104.73461	1.9	5048	SENE	2-1S-66
8	BEF WEST 8	2087	FNL	296	FEL	39.99481	-104.73461	1.9	5048	SENE	2-1S-66
9	BEF WEST 9	2071	FNL	296	FEL	39.99485	-104.73461	1.9	5048	SENE	2-1S-66
10	BEF WEST 10	2056	FNL	296	FEL	39.99489	-104.73461	1.9	5048	SENE	2-1S-66
11	BEF WEST 11	2040	FNL	295	FEL	39.99494	-104.73461	1.9	5048	SENE	2-1S-66
12	BEF WEST 12	2024	FNL	295	FEL	39.99498	-104.73461	2.0	5049	SENE	2-1S-66
13	BEF WEST 13	2007	FNL	295	FEL	39.99503	-104.73461	2.0	5049	SENE	2-1S-66

