

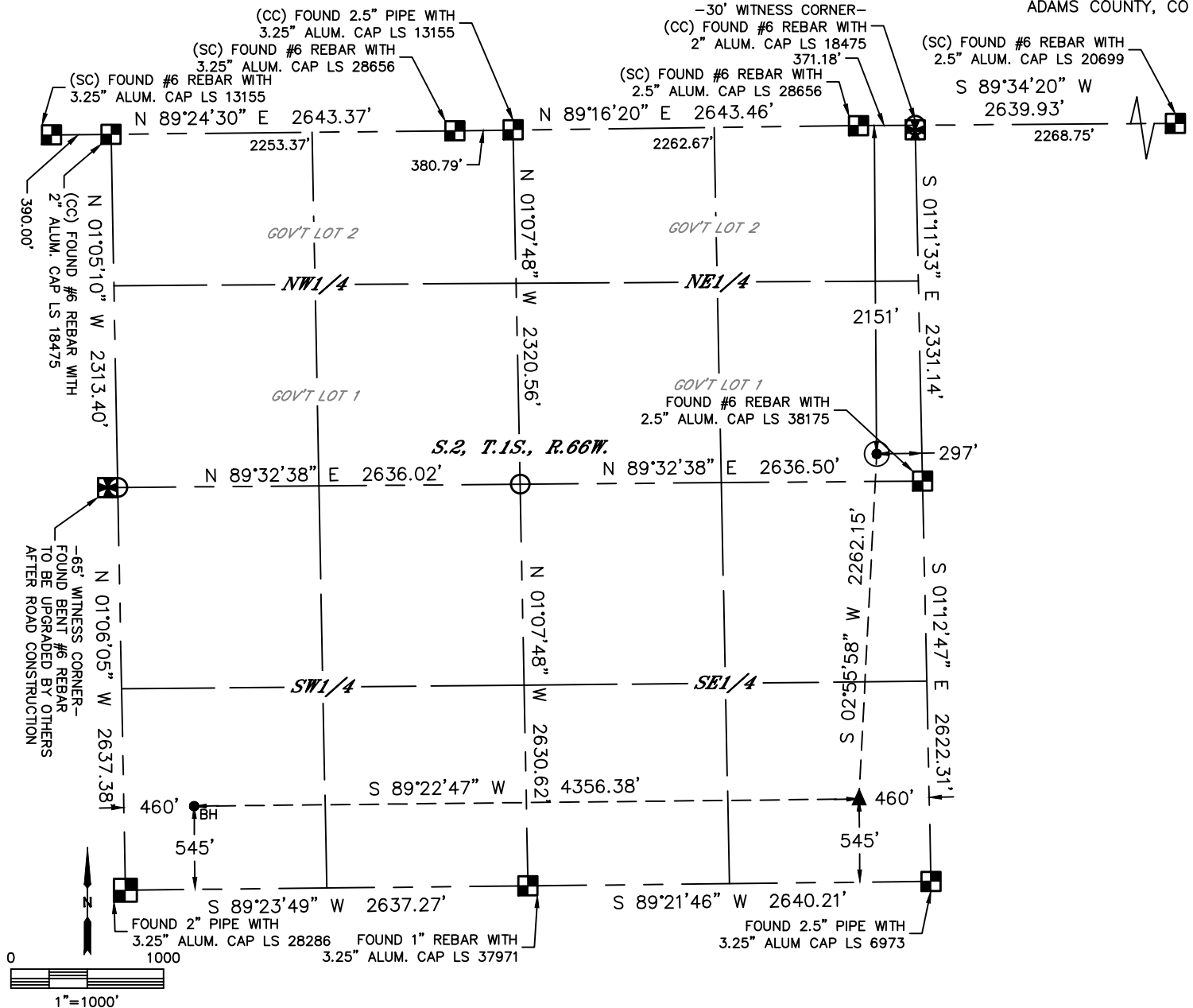


Lat40°, Inc. 6250 W. 10th Street, Unit 2, Greeley, CO 970-515-5294

WELL LOCATION CERTIFICATE

BEF WEST 4

SECTION: 2
TOWNSHIP: 1S
RANGE: 66W
6TH. P.M.
ADAMS COUNTY, CO



| | | | | | | | | | |
|----------------------------------|-----|-----|----------|-----------|------------------------|----------------|------------------------|-----------|---------|
| CLIENT: PETRO OPERATING CO. | | | | | LANDMAN: DEREK PETRIE | | | | |
| INSTRUMENT OPERATOR: JAKE STILLE | | | | | SURVEY DATE: 1/15/2018 | | SURFACE USE: CROP LAND | | |
| SHL FOOTAGE | | | SHL LAT° | SHL LONG° | SHL PDOP | SHL ELEV (FT.) | SHL 1/4/1/4 | SHL S-T-R | |
| 2151 | FNL | 297 | FEL | 39.99463 | -104.73461 | 1.9 | 5048 | SENE | 2-1S-66 |

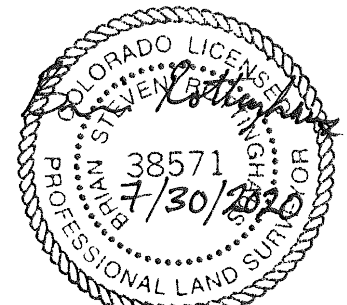
| BHL FOOTAGE | | | | BHL LAT ° | BHL LONG ° | BHL S-T-R | EP LAT ° | EP LONG ° | EP S-T-R |
|-------------|-----|-----|-----|-----------|------------|-----------|----------|------------|----------|
| 545 | FSL | 460 | FWL | 39.98841 | -104.75064 | 2-1S-66 | 39.98843 | -104.73509 | 2-1S-66 |

LEGEND

- = ALIQUOT MONUMENT AS DESCRIBED
- = CALCULATED POSITION
- = SURFACE HOLE LOCATION (SHL)
- ▲ = ENTRY POINT LOCATION (EP)
- _{BH} = BOTTOM HOLE LOCATION (BHL)
- ⊙ = EXISTING WELL
- ⊙ = ABANDONED WELL

NOTE:

- 1) Bearings shown are Grid Bearings of the Colorado State Plane Coordinate System, North Zone, North American Datum 1983. The lineal dimensions as contained herein are based upon the "U.S. Survey Foot."
- 2) Distances to section lines measured at 90 degrees from said section lines.
- 3) Ground elevations are based on an observed GPS elevation (NAVD 1988 DATUM).
- 4) Latitude and Longitude shown are (NAD 83 DATUM).
- 5) IMPROVEMENTS: See LOCATION DRAWING for all visible improvements within 500' of oil and gas location.
- 6) This map does not represent a boundary survey.



Brian S. Rottinghaus—On behalf of Lat40°, Inc.
Colorado Licensed Professional Land Surveyor No. 38571
DATE: 7/30/2020
PROJECT#: 2017015