

Interim Reclamation and Stormwater Inspection

August 17, 2020

Operator: EXTRACTION OIL & GAS INC - #10459

Location ID: 428627

Inspection Document #: 697501883

Weld County, CO

SWNE Section 32 T4N R68W

Chris Binschus
Reclamation Specialist, COGCC



COLORADO
Oil & Gas Conservation
Commission

Department of Natural Resources

Inspection Photos
Location Name: BROMLEY /32-32
Location ID: 428627

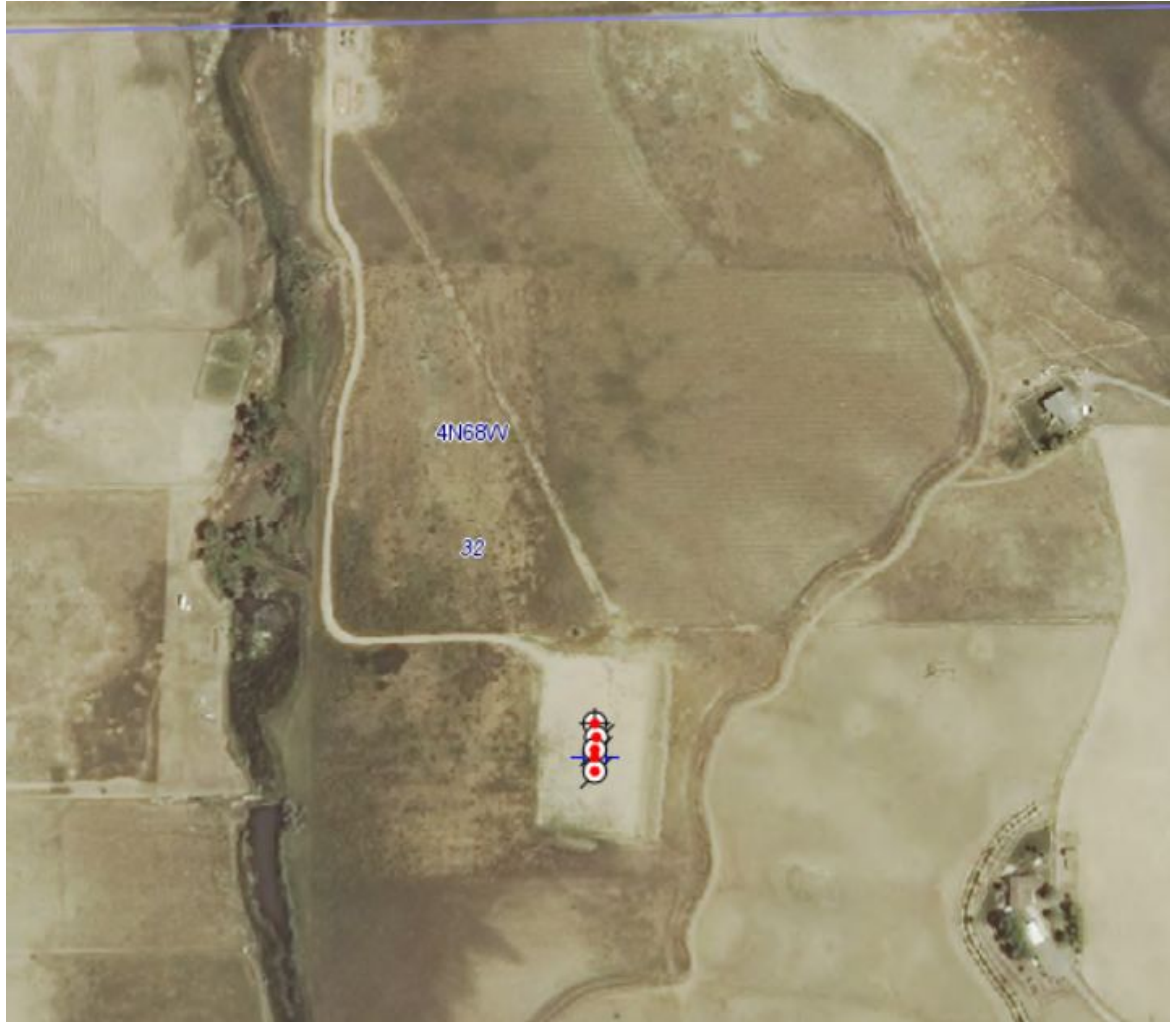


Photo 1. COGCC GISOnline aerial imagery taken 2013. Imagery illustrates the associated offsite tank battery, flowline, access road and well location. Location was constructed around May 2012.

Inspection Photos
Location Name: BROMLEY /32-32
Location ID: 428627



Photo 2. COGCC GISOnline aerial imagery taken 2017. Imagery illustrates the Operator has failed to perform interim reclamation at the well location. Refer to Photos 3-5 confirming interim reclamation has never been performed.

Inspection Photos
Location Name: BROMLEY /32-32
Location ID: 428627

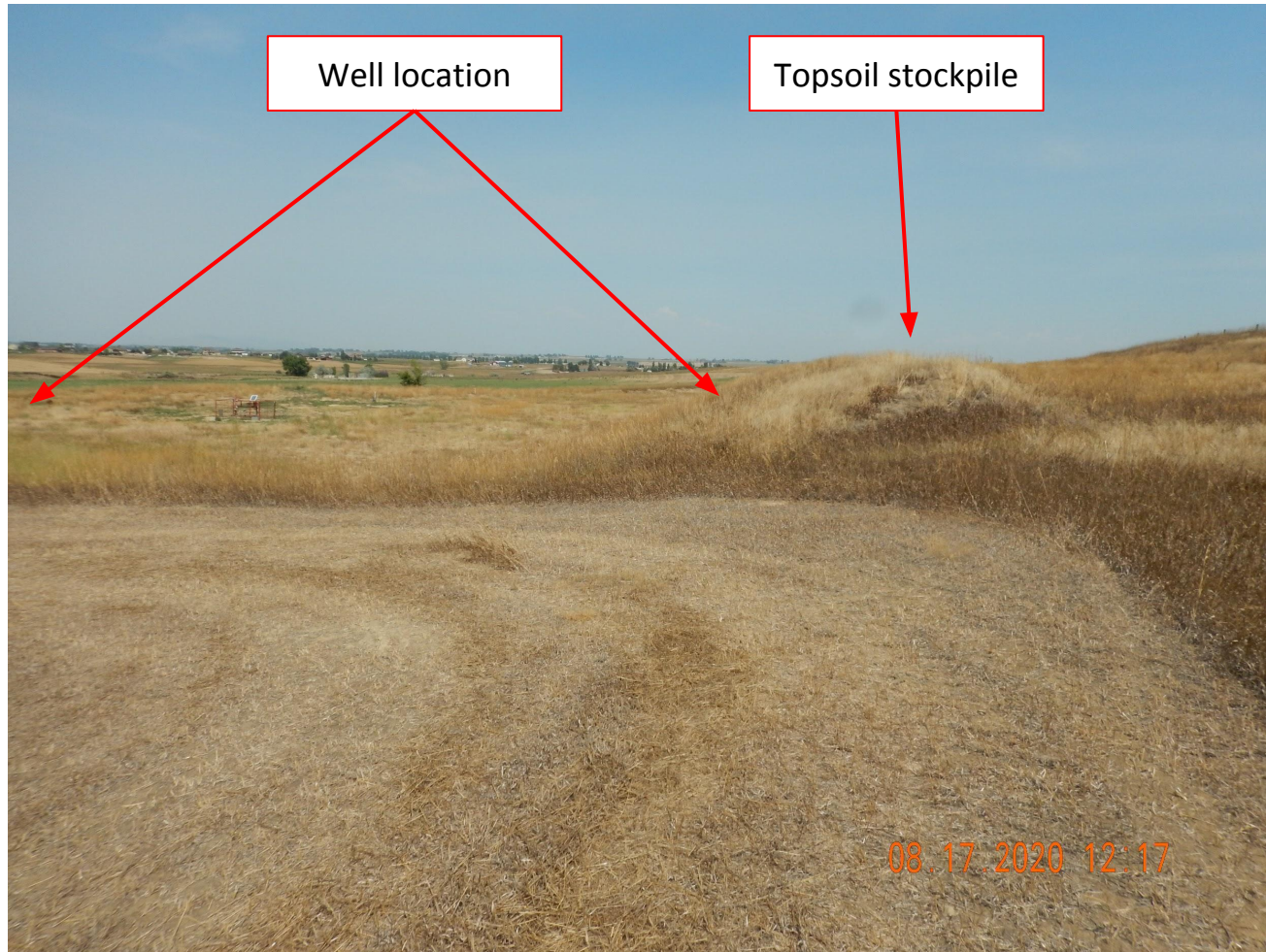


Photo 3. Photo taken south of the well location, facing North. Photo illustrates the Operator has failed to perform interim reclamation activities.

Inspection Photos
Location Name: BROMLEY /32-32
Location ID: 428627



Photo 4. Photo taken south of the well location, facing Northwest. See comments under Photo 3.

Inspection Photos
Location Name: BROMLEY /32-32
Location ID: 428627

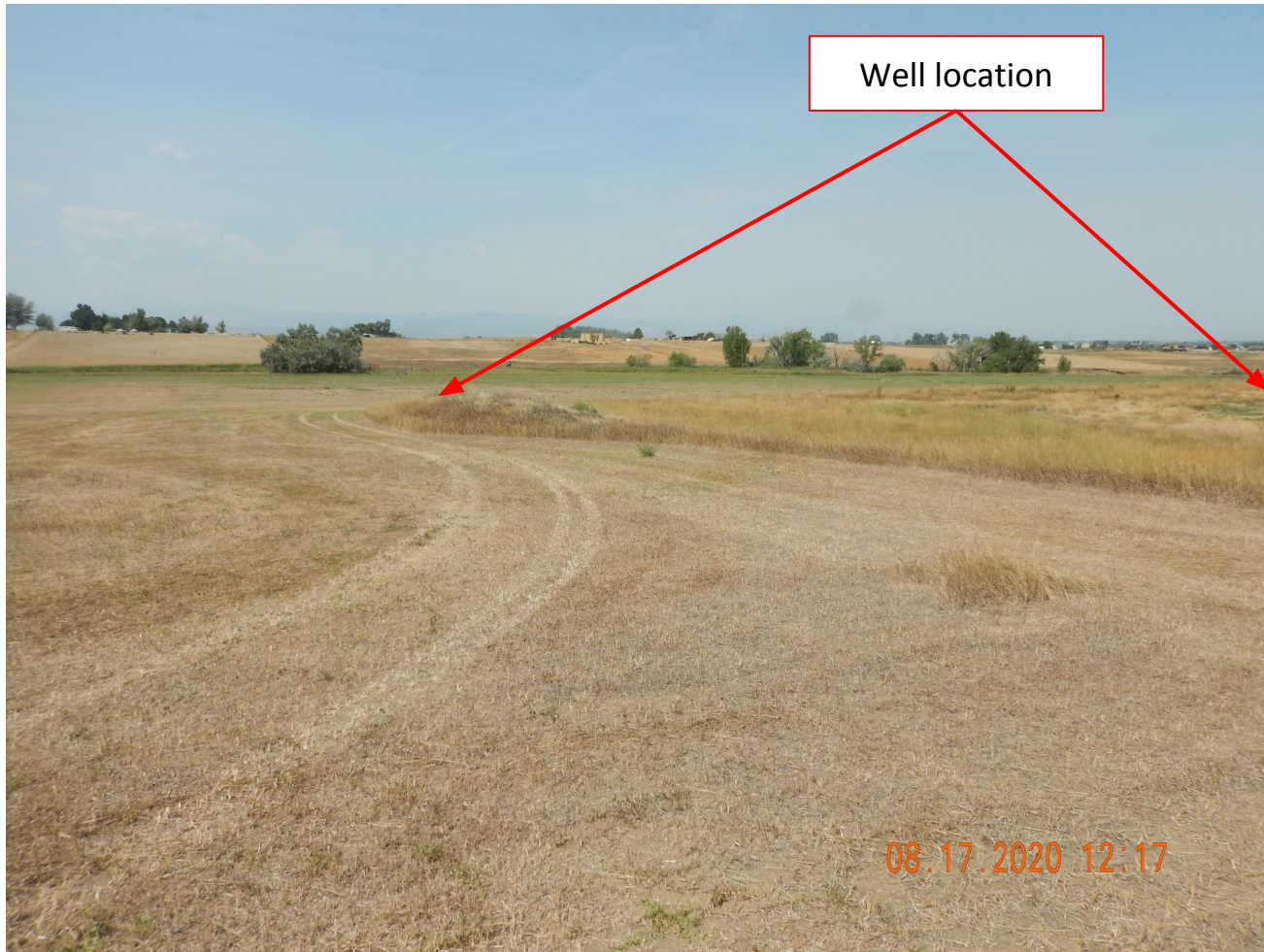


Photo 5. Photo taken south of the well location, facing West. See comments under Photo 3.

Inspection Photos
Location Name: BROMLEY /32-32
Location ID: 428627



Photo 6. Photo taken from the western well location, facing East. Photo illustrates an unmanaged List B Colorado noxious weed, Musk thistle, which has already flowered and has mostly all set seed.

Inspection Photos
Location Name: BROMLEY /32-32
Location ID: 428627



Photo 7. Photo taken from the northern well location. Photo illustrates an unmanaged List B Colorado noxious weed, Canada thistle, which has already flowered and has set seed.

Inspection Photos
Location Name: BROMLEY /32-32
Location ID: 428627



Photo 8. Photo taken from the southeastern well location, facing North. Photo illustrates an unmanaged List C Colorado noxious weed, cheatgrass, which appears to be spreading off location and onto the adjacent land.

Inspection Photos
Location Name: BROMLEY /32-32
Location ID: 428627



Photo 9. Photo taken from the western well location, facing Northwest. Photo illustrates gully erosion along the western fill slope. There were other areas of erosion observed along the western fill slope.

Inspection Photos
Location Name: BROMLEY /32-32
Location ID: 428627



Photo 10. Photo taken from a portion of the access road, facing North. Photo illustrates unmanaged weeds along the access road.

Inspection Photos
Location Name: BROMLEY /32-32
Location ID: 428627



Photo 11. Photo taken from a portion of the access road, facing South. See comments under Photo 10.