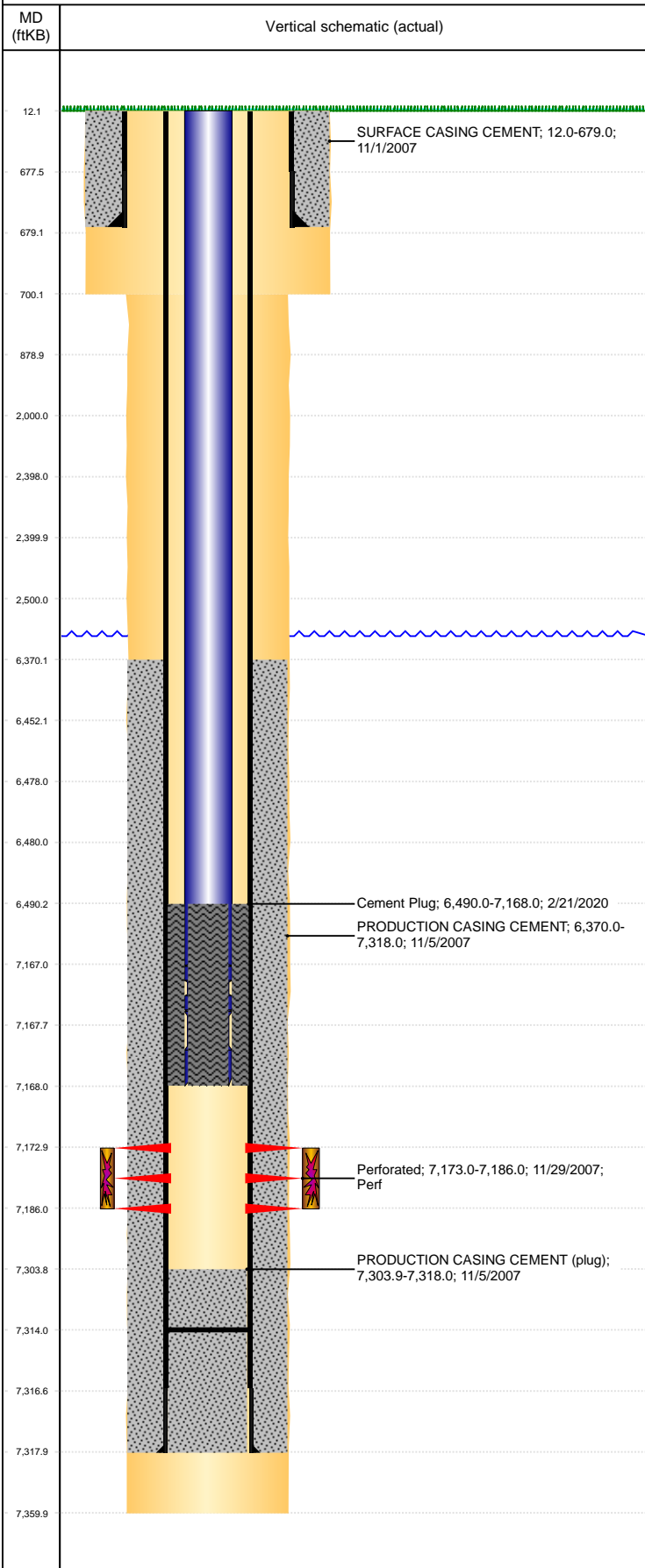


**Well Name: FAULKNER 30-23**

VERTICAL, ORIGINAL HOLE, 8/17/2020 4:14:11 PM



**Well Header**

API 05-123-26418	Business Unit DJ BASIN	District 15	Well Config VERTICAL
KB - GL / MSL (ft...) 12.00	Spud Date 11/1/2007	P & A Date	Well Production Status TA
SoRT No			
Comment			

**Surface Location (Congressional)**

Qtr 3 SW	Qtr 4 NW	Section 30	Twnshp 7	Twnsh... N	Range 64	Rng E... W	Actual Latitude (°) 40.54581000	Actual Longitude (°) -104.59864000
-------------	-------------	---------------	-------------	---------------	-------------	---------------	------------------------------------	---------------------------------------

**Wellbore Sections**

Section Des	Size (in)	Act Top, MD (ftKB)	Act Btm, MD (ftKB)
SURFACE	12 1/4	12	700
PRODUCTION	7 7/8	700	7,360

**Casing Strings**

Csg Des	Run Date	OD (in)	Wt/Len (lb/ft)	Grade	Top, MD (ftKB)	MD (ftKB)
Surface	8/12/2020					
Production	11/1/2007	8 5/8	24.00	666.5	12.0	679.0
	11/5/2007	4 1/2	11.60	N-80	12.0	7,318.0

**Cement**

Des	Start Date	Top (ftKB)	Btm (ftKB)
SURFACE CASING CEMENT	11/1/2007	12.0	679.0
PRODUCTION CASING CEMENT	11/5/2007	6,370.0	7,318.0
Cement Plug	2/21/2020	6,490.0	7,168.0

**Zone Statuses**

Zone Name	Status Date	Status	Fluid Type	Job	Prod Method
CODELL	3/15/2012	PR	Water		Flowing
CODELL	2/21/2020	TA			
NIOBRARA	2/21/2020	TA	Oil		Flowing
NIOBRARA	2/21/2020	TA			

**Perforation Data**

Linked Zone	Bnch/Stg	Entered Shot Total	Top (ftKB)	Btm (ftKB)	Date
CODELL, ORIGINAL HOLE		52	7,173.00	7,186.00	11/29/2007

**Stimulation Intervals**

Zone	Start Date	Top (ftKB)	Btm (ftKB)
CODELL, ORIGINAL HOLE	12/2/2007	7,173.0	7,186.0

**Other In Hole**

Run Date	Des	Make	OD (in)	Top (ftKB)	Btm (ftKB)

**Logs**

Date	Type	Top, MD (ftKB)	Btm, MD (ftKB)
11/5/2007	COMPENSATED DENSITY	3,800.0	7,334.0
11/5/2007	INDUCTION	689.0	7,354.0
11/28/2007	CBL/CCL/GR	6,250.0	7,312.0

**Plug Back Total Depths**

Date	Type	Com	Depth (ftKB)
11/4/2007	GUIDE SHOE	GUIDE SHOE	7,303.9
11/28/2007	FILL	DEPTH LOGGER	7,314.0