

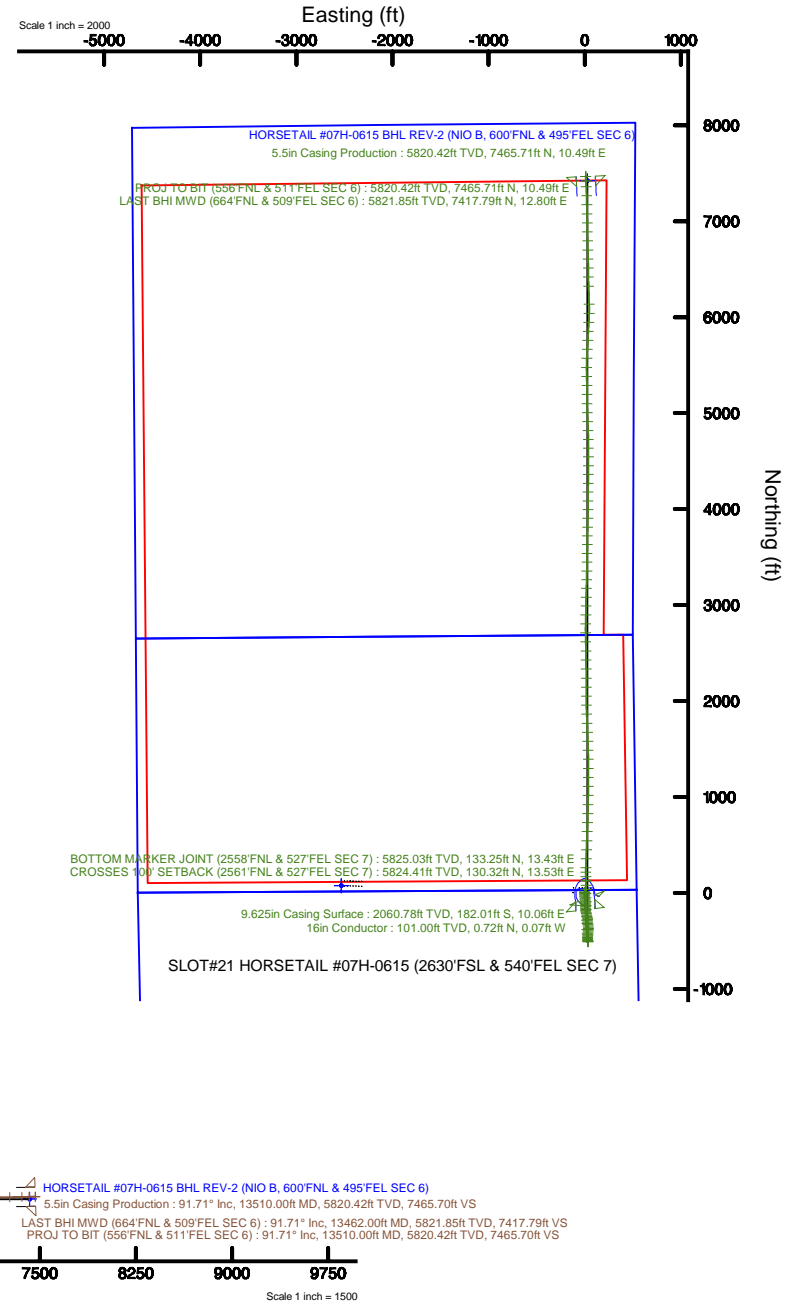
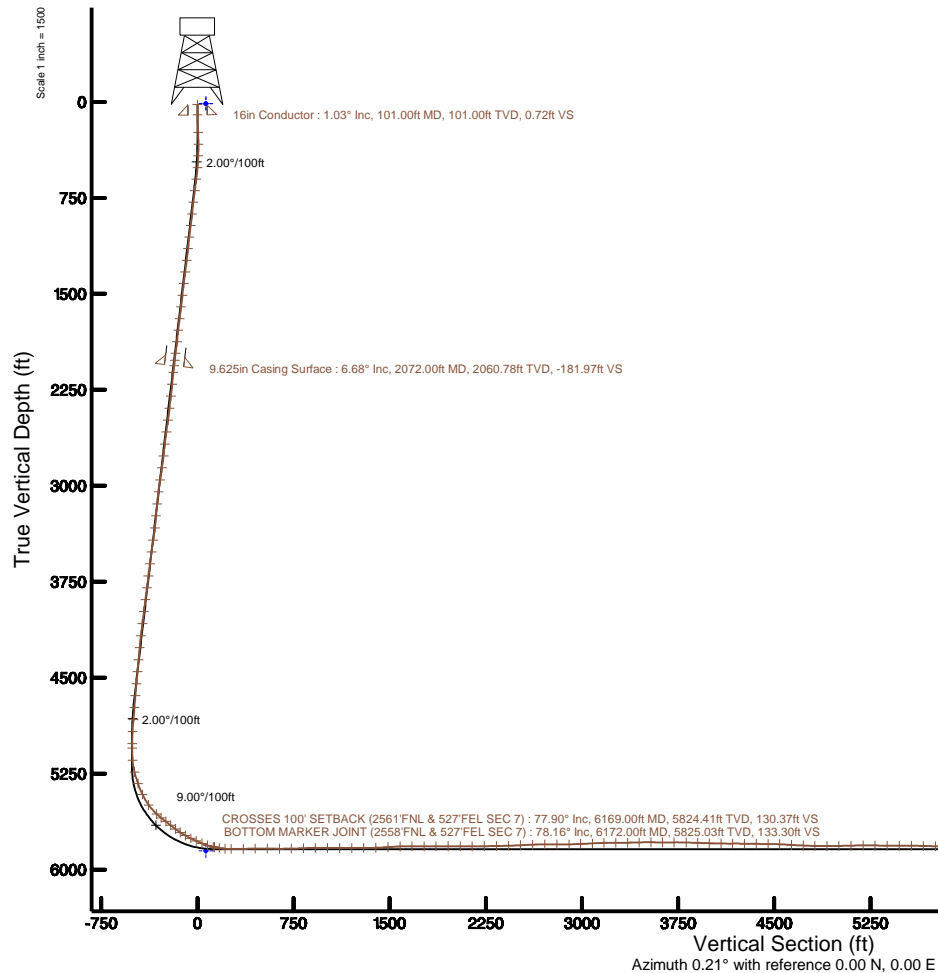
WHITING OIL & GAS CORPORATION

Location: COLORADO Slot: SLOT#21 HORSETAIL #07H-0615 (2630'FSL & 540'FEL SEC 7)
Field: WELD COUNTY Well: HORSETAIL #07H-0615
Facility: SEC.07-T10N-R57W Wellbore: HORSETAIL #07H-0615 PWB

Plot reference wellpath is HORSETAIL #07H-0615 REV-B.0 PWB	Grid System: NAD83 / Lambert Colorado SP, Northern Zone (501), US feet
True vertical depths are referenced to UNIT 406 (21) (RXB)	* - Wellpath was transformed from a different geodetic datum
Measured depths are referenced to UNIT 406 (21) (RXB)	North Reference: True north
UNIT 406 (21) (RXB) to Mean Sea Level: 4933 feet	Scale: True distance
Mean Sea Level to Mud line (At Slot: SLOT#21 HORSETAIL #07H-0615 (2630'FSL & 540'FEL SEC 7)): 0 feet	Depths are in feet
Coordinates are in feet referenced to Slot	Created by: wagnjam on 2016-07-13
	Database: WA_DEN_Denver_Defn

Location Information

Facility Name				Grid East (US ft)	Grid North (US ft)	Latitude	Longitude
SEC.07-T10N-R57W				3471270.155	1558347.593	40°5'11.010"N	103°47'46.990"W
Slot	Local N (ft)	Local E (ft)	Grid East (US ft)	Grid North (US ft)	Latitude	Longitude	
SLOT#21 HORSETAIL #07H-0615 (2630'FSL & 540'FEL SEC 7)	-74.76	2532.07	3473803.218	1558321.488	40°5'12.270"N	103°47'14.040"W	
UNIT 406 (21) (RXB) to Mud line (At Slot: SLOT#21 HORSETAIL #07H-0615 (2630'FSL & 540'FEL SEC 7))				4933ft			
Mean Sea Level to Mud line (At Slot: SLOT#21 HORSETAIL #07H-0615 (2630'FSL & 540'FEL SEC 7))				0ft			
UNIT 406 (21) (RXB) to Mean Sea Level				4933ft			





Actual Wellpath Report

HORSETAIL #07H-0615 AWP

Page 1 of 9



REFERENCE WELLPATH IDENTIFICATION

Operator	WHITING OIL & GAS CORPORATION	Slot	SLOT#21 HORSETAIL #07H-0615 (2630'FSL & 540'FEL SEC 7)
Area	COLORADO	Well	HORSETAIL #07H-0615
Field	WELD COUNTY	Wellbore	HORSETAIL #07H-0615 AWB
Facility	SEC.07-T10N-R57W		

REPORT SETUP INFORMATION

Projection System	NAD83 / Lambert Colorado SP, Northern Zone (501), US feet	Software System	WellArchitect® 5.0
North Reference	True	User	Wagnjam
Scale	1.000012	Report Generated	7/13/2016 at 4:46:32 PM
Convergence at slot	1.11° East	Database/Source file	WA_DEN_Denver_Defn/HORSETAIL_#07H-0615_AWP.xml

WELLPATH LOCATION

	Local coordinates		Grid coordinates		Geographic coordinates	
	North[ft]	East[ft]	Easting[US ft]	Northing[US ft]	Latitude	Longitude
Slot Location	-74.76	2532.07	3473803.22	1558321.49	40°51'12.270"N	103°47'14.040"W
Facility Reference Pt			3471270.16	1558347.59	40°51'13.010"N	103°47'46.990"W
Field Reference Pt			3471270.16	1558347.59	40°51'13.010"N	103°47'46.990"W

WELLPATH DATUM

Calculation method	Minimum curvature	UNIT 406 (21') (RKB) to Facility Vertical Datum	4933.00ft
Horizontal Reference Pt	Slot	UNIT 406 (21') (RKB) to Mean Sea Level	4933.00ft
Vertical Reference Pt	UNIT 406 (21') (RKB)	UNIT 406 (21') (RKB) to Mud Line at Slot (SLOT#21 HORSETAIL #07H-0615 (2630'FSL & 540'FEL SEC 7))	4933.00ft
MD Reference Pt	UNIT 406 (21') (RKB)	Section Origin	N 0.00, E 0.00 ft
Field Vertical Reference	Mean Sea Level	Section Azimuth	0.21°



Actual Wellpath Report

HORSETAIL #07H-0615 AWP

Page 2 of 9



REFERENCE WELLPATH IDENTIFICATION

Operator	WHITING OIL & GAS CORPORATION	Slot	SLOT#21 HORSETAIL #07H-0615 (2630'FSL & 540'FEL SEC 7)
Area	COLORADO	Well	HORSETAIL #07H-0615
Field	WELD COUNTY	Wellbore	HORSETAIL #07H-0615 AWB
Facility	SEC.07-T10N-R57W		

WELLPATH DATA (155 stations) † = interpolated/extrapolated station

MD [ft]	Inclination [°]	Azimuth [°]	TVD [ft]	Vert Sect [ft]	North [ft]	East [ft]	DLS [°/100ft]	Comments
0.00†	0.000	354.560	0.00	0.00	0.00	0.00	0.00	
21.00	0.000	354.560	21.00	0.00	0.00	0.00	0.00	
239.00	2.810	354.560	238.91	5.32	5.32	-0.51	1.29	
330.00	0.610	320.430	329.87	7.91	7.91	-1.03	2.56	
421.00	2.250	190.970	420.85	6.53	6.53	-1.68	2.94	
513.00	5.220	176.130	512.64	0.58	0.58	-1.74	3.37	
605.00	7.040	179.900	604.11	-9.23	-9.23	-1.44	2.03	
696.00	6.920	179.970	694.44	-20.29	-20.29	-1.43	0.13	
787.00	6.850	182.600	784.78	-31.20	-31.19	-1.68	0.35	
878.00	6.720	179.410	875.15	-41.94	-41.94	-1.87	0.44	
970.00	7.060	167.140	966.49	-52.83	-52.83	-0.55	1.64	
1061.00	6.570	167.670	1056.84	-63.36	-63.37	1.80	0.54	
1152.00	6.200	167.540	1147.28	-73.24	-73.25	3.98	0.41	
1244.00	6.920	176.430	1238.68	-83.62	-83.64	5.39	1.35	
1334.00	7.170	177.880	1328.00	-94.64	-94.66	5.94	0.34	
1426.00	6.990	178.570	1419.30	-105.97	-105.99	6.29	0.22	
1518.00	6.830	179.910	1510.63	-117.04	-117.06	6.44	0.25	
1610.00	6.640	178.740	1601.99	-127.83	-127.85	6.56	0.25	
1702.00	6.380	179.230	1693.40	-138.25	-138.28	6.75	0.29	
1793.00	7.390	175.800	1783.74	-149.14	-149.17	7.25	1.20	
1884.00	6.010	174.170	1874.12	-159.72	-159.75	8.16	1.53	
1975.00	7.110	174.700	1964.52	-170.06	-170.10	9.16	1.21	
2029.00	7.230	176.420	2018.10	-176.78	-176.81	9.68	0.46	
2125.00	6.010	173.570	2113.46	-187.80	-187.84	10.62	1.32	
2219.00	5.550	176.060	2206.98	-197.22	-197.26	11.49	0.56	
2312.00	7.040	160.080	2299.42	-207.06	-207.11	13.74	2.46	
2407.00	6.960	158.650	2393.72	-217.88	-217.94	17.82	0.20	
2501.00	7.940	168.970	2486.93	-229.54	-229.62	21.13	1.76	
2595.00	7.540	167.100	2580.07	-241.92	-242.00	23.75	0.50	
2690.00	7.070	168.250	2674.30	-253.71	-253.80	26.33	0.52	



Actual Wellpath Report

HORSETAIL #07H-0615 AWP
Page 3 of 9



REFERENCE WELLPATH IDENTIFICATION

Operator	WHITING OIL & GAS CORPORATION	Slot	SLOT#21 HORSETAIL #07H-0615 (2630'FSL & 540'FEL SEC 7)
Area	COLORADO	Well	HORSETAIL #07H-0615
Field	WELD COUNTY	Wellbore	HORSETAIL #07H-0615 AWB
Facility	SEC.07-T10N-R57W		

WELLPATH DATA (155 stations)

MD [ft]	Inclination [°]	Azimuth [°]	TVD [ft]	Vert Sect [ft]	North [ft]	East [ft]	DLS [°/100ft]	Comments
2784.00	6.880	167.150	2767.60	-264.85	-264.96	28.76	0.25	
2878.00	8.310	180.920	2860.78	-277.13	-277.24	29.91	2.45	
2973.00	7.970	178.930	2954.83	-290.58	-290.69	29.92	0.46	
3067.00	7.410	177.390	3047.98	-303.15	-303.26	30.32	0.63	
3161.00	6.090	174.590	3141.33	-314.17	-314.28	31.06	1.45	
3256.00	4.630	167.190	3235.91	-322.92	-323.04	32.39	1.70	
3350.00	6.680	177.180	3329.45	-332.07	-332.20	33.50	2.41	
3445.00	8.330	168.630	3423.64	-344.33	-344.46	35.13	2.09	
3539.00	8.070	166.560	3516.68	-357.42	-357.56	38.00	0.42	
3633.00	7.430	186.050	3609.83	-369.88	-370.02	38.90	2.86	
3728.00	7.420	188.490	3704.04	-382.06	-382.20	37.34	0.33	
3822.00	7.490	187.210	3797.24	-394.14	-394.28	35.68	0.19	
3916.00	7.420	185.730	3890.45	-406.27	-406.39	34.30	0.22	
4010.00	7.100	184.340	3983.69	-418.10	-418.23	33.26	0.39	
4105.00	6.850	183.740	4077.99	-429.61	-429.73	32.45	0.27	
4199.00	6.370	184.520	4171.37	-440.41	-440.53	31.67	0.52	
4294.00	5.790	183.770	4265.83	-450.45	-450.56	30.94	0.62	
4388.00	5.030	183.200	4359.41	-459.29	-459.41	30.40	0.81	
4482.00	4.390	180.600	4453.09	-467.01	-467.12	30.13	0.72	
4576.00	5.900	179.640	4546.71	-475.44	-475.55	30.12	1.61	
4670.00	4.850	174.510	4640.30	-484.22	-484.34	30.53	1.23	
4764.00	3.490	175.430	4734.05	-491.03	-491.14	31.14	1.45	
4858.00	6.330	175.240	4827.69	-499.04	-499.16	31.80	3.02	
4952.00	2.520	157.270	4921.40	-506.11	-506.23	33.03	4.26	
5046.00	0.590	175.320	5015.36	-508.50	-508.62	33.87	2.09	
5081.00	0.590	190.350	5050.36	-508.85	-508.98	33.85	0.44	
5175.00	4.990	350.630	5144.25	-505.30	-505.42	33.09	5.90	
5269.00	14.010	349.620	5236.87	-490.05	-490.16	30.37	9.60	
5363.00	19.070	355.620	5326.95	-463.54	-463.64	27.15	5.67	
5457.00	25.910	354.880	5413.75	-427.74	-427.83	24.14	7.28	



Actual Wellpath Report

HORSETAIL #07H-0615 AWP

Page 4 of 9



REFERENCE WELLPATH IDENTIFICATION

Operator	WHITING OIL & GAS CORPORATION	Slot	SLOT#21 HORSETAIL #07H-0615 (2630'FSL & 540'FEL SEC 7)
Area	COLORADO	Well	HORSETAIL #07H-0615
Field	WELD COUNTY	Wellbore	HORSETAIL #07H-0615 AWB
Facility	SEC.07-T10N-R57W		

WELLPATH DATA (155 stations) † = interpolated/extrapolated station

MD [ft]	Inclination [°]	Azimuth [°]	TVD [ft]	Vert Sect [ft]	North [ft]	East [ft]	DLS [°/100ft]	Comments
5551.00	35.000	357.300	5494.70	-380.27	-380.35	21.03	9.76	
5645.00	47.020	359.320	5565.51	-318.73	-318.81	19.35	12.86	
5692.00	52.270	359.440	5595.93	-282.93	-283.00	18.96	11.17	
5738.00	52.360	358.700	5624.05	-246.54	-246.61	18.37	1.29	
5785.00	52.180	358.040	5652.81	-209.39	-209.45	17.31	1.17	
5833.00	52.440	0.020	5682.16	-171.41	-171.47	16.67	3.31	
5880.00	56.180	358.720	5709.58	-133.25	-133.31	16.24	8.27	
5927.00	59.950	357.920	5734.43	-93.40	-93.45	15.07	8.15	
5974.00	64.530	359.310	5756.32	-51.83	-51.88	14.07	10.09	
6022.00	66.140	1.270	5776.35	-8.22	-8.27	14.30	5.00	
6069.00	67.970	0.800	5794.67	35.06	35.00	15.08	4.00	
6115.00	71.940	358.880	5810.44	78.26	78.21	14.95	9.48	
6162.00	77.280	358.120	5822.91	123.54	123.49	13.76	11.47	
6169.00†	77.897	358.057	5824.41	130.37	130.32	13.53	8.85	CROSSES 100' SETBACK (2561'FNL & 527'FEL SEC 7)
6172.00†	78.161	358.030	5825.03	133.30	133.25	13.43	8.85	BOTTOM MARKER JOINT (2558'FNL & 527'FEL SEC 7)
6209.00	81.420	357.700	5831.59	169.68	169.64	12.07	8.85	
6256.00	85.910	0.130	5836.78	216.37	216.33	11.19	10.85	
6302.00	89.520	1.820	5838.61	262.32	262.27	11.97	8.66	
6397.00	91.390	2.090	5837.86	357.26	357.21	15.22	1.99	
6490.00	91.090	1.830	5835.84	450.20	450.14	18.40	0.43	
6584.00	88.840	2.400	5835.90	544.14	544.06	21.86	2.47	
6679.00	89.760	2.260	5837.06	639.07	638.98	25.73	0.98	
6773.00	91.270	1.520	5836.22	733.02	732.92	28.83	1.79	
6867.00	92.580	1.750	5833.06	826.93	826.83	31.51	1.41	
6961.00	90.280	1.180	5830.71	920.88	920.76	33.91	2.52	
7055.00	89.360	0.700	5831.01	1014.87	1014.75	35.45	1.10	
7149.00	89.790	0.610	5831.71	1108.86	1108.74	36.53	0.47	
7244.00	90.200	0.380	5831.71	1203.86	1203.73	37.35	0.49	
7338.00	90.380	359.450	5831.24	1297.86	1297.73	37.21	1.01	
7432.00	92.010	359.330	5829.28	1391.82	1391.70	36.21	1.74	



Actual Wellpath Report

HORSETAIL #07H-0615 AWP
Page 5 of 9



REFERENCE WELLPATH IDENTIFICATION

Operator	WHITING OIL & GAS CORPORATION	Slot	SLOT#21 HORSETAIL #07H-0615 (2630'FSL & 540'FEL SEC 7)
Area	COLORADO	Well	HORSETAIL #07H-0615
Field	WELD COUNTY	Wellbore	HORSETAIL #07H-0615 AWB
Facility	SEC.07-T10N-R57W		

WELLPATH DATA (155 stations)

MD [ft]	Inclination [°]	Azimuth [°]	TVD [ft]	Vert Sect [ft]	North [ft]	East [ft]	DLS [°/100ft]	Comments
7526.00	93.960	358.230	5824.38	1485.66	1485.55	34.21	2.38	
7621.00	92.010	358.570	5819.44	1580.48	1580.38	31.56	2.08	
7715.00	89.640	357.480	5818.08	1674.39	1674.30	28.32	2.78	
7809.00	89.800	357.690	5818.54	1768.29	1768.22	24.36	0.28	
7903.00	91.210	357.650	5817.71	1862.20	1862.13	20.54	1.50	
7997.00	89.240	359.210	5817.34	1956.14	1956.09	17.96	2.67	
8092.00	89.640	359.290	5818.27	2051.12	2051.08	16.72	0.43	
8185.00	90.470	0.400	5818.18	2144.12	2144.07	16.47	1.49	
8279.00	90.620	359.460	5817.29	2238.11	2238.07	16.35	1.01	
8374.00	90.960	359.340	5815.98	2333.10	2333.05	15.36	0.38	
8468.00	91.980	360.000	5813.57	2427.06	2427.02	14.82	1.29	
8562.00	92.750	358.600	5809.69	2520.96	2520.93	13.67	1.70	
8657.00	92.510	358.250	5805.33	2615.82	2615.79	11.06	0.45	
8752.00	89.240	359.040	5803.88	2710.76	2710.74	8.82	3.54	
8845.00	90.600	1.730	5804.01	2803.75	2803.73	9.44	3.24	
8940.00	91.150	1.670	5802.56	2898.70	2898.68	12.26	0.58	
9031.00	92.260	0.790	5799.85	2989.65	2989.61	14.21	1.56	
9123.00	93.250	0.410	5795.43	3081.54	3081.50	15.17	1.15	
9214.00	91.520	2.120	5791.64	3172.43	3172.39	17.18	2.67	
9305.00	89.830	1.400	5790.57	3263.39	3263.34	19.98	2.02	
9397.00	90.940	1.160	5789.95	3355.37	3355.31	22.03	1.23	
9489.00	91.800	0.510	5787.75	3447.34	3447.28	23.37	1.17	
9580.00	89.460	1.190	5786.75	3538.32	3538.25	24.72	2.68	
9671.00	89.770	0.930	5787.36	3629.31	3629.24	26.41	0.44	
9761.00	90.600	0.880	5787.07	3719.30	3719.22	27.83	0.92	
9854.00	88.170	1.550	5788.07	3812.27	3812.19	29.80	2.71	
9945.00	87.800	1.010	5791.27	3903.20	3903.11	31.83	0.72	
10036.00	88.200	0.480	5794.45	3994.14	3994.05	33.01	0.73	
10127.00	89.090	0.470	5796.60	4085.11	4085.02	33.77	0.98	
10218.00	90.480	0.500	5796.94	4176.11	4176.01	34.54	1.53	



Actual Wellpath Report

HORSETAIL #07H-0615 AWP
Page 6 of 9



REFERENCE WELLPATH IDENTIFICATION

Operator	WHITING OIL & GAS CORPORATION	Slot	SLOT#21 HORSETAIL #07H-0615 (2630'FSL & 540'FEL SEC 7)
Area	COLORADO	Well	HORSETAIL #07H-0615
Field	WELD COUNTY	Wellbore	HORSETAIL #07H-0615 AWB
Facility	SEC.07-T10N-R57W		

WELLPATH DATA (155 stations)

MD [ft]	Inclination [°]	Azimuth [°]	TVD [ft]	Vert Sect [ft]	North [ft]	East [ft]	DLS [°/100ft]	Comments
10310.00	88.760	1.080	5797.55	4268.10	4268.00	35.81	1.97	
10402.00	89.250	0.800	5799.15	4360.08	4359.97	37.31	0.61	
10494.00	89.930	0.260	5799.81	4452.07	4451.96	38.17	0.94	
10585.00	86.850	0.030	5802.36	4543.02	4542.91	38.40	3.39	
10677.00	86.970	359.430	5807.32	4634.89	4634.78	37.96	0.66	
10768.00	87.280	358.950	5811.89	4725.76	4725.66	36.68	0.63	
10859.00	88.080	357.980	5815.57	4816.64	4816.55	34.24	1.38	
10954.00	90.330	357.800	5816.89	4911.55	4911.47	30.74	2.38	
11047.00	91.650	357.440	5815.28	5004.44	5004.37	26.88	1.47	
11142.00	91.620	358.780	5812.57	5099.33	5099.28	23.75	1.41	
11236.00	89.650	0.240	5811.53	5193.31	5193.26	22.95	2.61	
11330.00	89.800	359.440	5811.98	5287.31	5287.26	22.69	0.87	
11424.00	89.710	357.550	5812.38	5381.26	5381.22	20.22	2.01	
11519.00	89.370	0.710	5813.14	5476.23	5476.20	18.77	3.35	
11613.00	89.680	2.810	5813.92	5570.18	5570.14	21.66	2.26	
11707.00	88.420	3.510	5815.48	5664.04	5663.98	26.84	1.53	
11802.00	88.570	2.860	5817.98	5758.88	5758.80	32.12	0.70	
11895.00	89.530	2.900	5819.52	5851.77	5851.67	36.79	1.03	
11989.00	90.880	3.280	5819.18	5945.65	5945.53	41.86	1.49	
12083.00	88.890	0.870	5819.37	6039.58	6039.46	45.26	3.32	
12178.00	89.190	358.840	5820.96	6134.56	6134.44	45.02	2.16	
12366.00	91.850	358.080	5819.26	6322.45	6322.35	39.97	1.47	
12461.00	89.740	359.250	5817.94	6417.40	6417.31	37.76	2.54	
12555.00	87.990	358.900	5819.80	6511.36	6511.27	36.24	1.90	
12650.00	88.360	358.710	5822.83	6606.28	6606.20	34.26	0.44	
12744.00	88.510	358.410	5825.39	6700.21	6700.14	31.90	0.36	
12838.00	89.470	358.630	5827.05	6794.15	6794.09	29.47	1.05	
12933.00	90.510	359.020	5827.07	6889.12	6889.07	27.52	1.17	
13027.00	91.100	359.040	5825.75	6983.09	6983.05	25.93	0.63	
13121.00	89.530	358.740	5825.23	7077.06	7077.02	24.11	1.70	



Actual Wellpath Report

HORSETAIL #07H-0615 AWP

Page 7 of 9



REFERENCE WELLPATH IDENTIFICATION

Operator	WHITING OIL & GAS CORPORATION	Slot	SLOT#21 HORSETAIL #07H-0615 (2630'FSL & 540'FEL SEC 7)
Area	COLORADO	Well	HORSETAIL #07H-0615
Field	WELD COUNTY	Wellbore	HORSETAIL #07H-0615 AWB
Facility	SEC.07-T10N-R57W		

WELLPATH DATA (155 stations)

MD [ft]	Inclination [°]	Azimuth [°]	TVD [ft]	Vert Sect [ft]	North [ft]	East [ft]	DLS [°/100ft]	Comments
13216.00	90.270	358.650	5825.40	7172.03	7172.00	21.95	0.78	
13310.00	90.510	357.930	5824.76	7265.97	7265.95	19.14	0.81	
13404.00	91.220	357.550	5823.34	7359.88	7359.87	15.44	0.86	
13462.00	91.710	357.240	5821.85	7417.79	7417.79	12.80	1.00	LAST BHI MWD (664'FNL & 509'FEL SEC 6)
13510.00	91.710	357.240	5820.42	7465.70	7465.71	10.49	0.00	PROJ TO BIT (556'FNL & 511'FEL SEC 6)

HOLE & CASING SECTIONS - Ref Wellbore: HORSETAIL #07H-0615 AWB Ref Wellpath: HORSETAIL #07H-0615 AWP

String/Diameter	Start MD [ft]	End MD [ft]	Interval [ft]	Start TVD [ft]	End TVD [ft]	Start N/S [ft]	Start E/W [ft]	End N/S [ft]	End E/W [ft]
16in Conductor	21.00	101.00	80.00	21.00	101.00	0.00	0.00	0.72	-0.07
13.5in Open Hole	21.00	2083.00	2062.00	21.00	2071.71	0.00	0.00	-183.27	10.17
9.625in Casing Surface	21.00	2072.00	2051.00	21.00	2060.78	0.00	0.00	-182.01	10.06
8.5in Open Hole	2083.00	13510.00	11427.00	2071.71	5820.42	-183.27	10.17	7465.71	10.49
5.5in Casing Production	21.00	13510.00	13489.00	21.00	5820.42	0.00	0.00	7465.71	10.49



Actual Wellpath Report

HORSETAIL #07H-0615 AWP

Page 8 of 9



REFERENCE WELLPATH IDENTIFICATION			
Operator	WHITING OIL & GAS CORPORATION	Slot	SLOT#21 HORSETAIL #07H-0615 (2630'FSL & 540'FEL SEC 7)
Area	COLORADO	Well	HORSETAIL #07H-0615
Field	WELD COUNTY	Wellbore	HORSETAIL #07H-0615 AWB
Facility	SEC.07-T10N-R57W		

TARGETS								
Name	TVD [ft]	North [ft]	East [ft]	Grid East [US ft]	Grid North [US ft]	Latitude	Longitude	Shape
SEC.06-T10N-R57W	13.00	75.02	-2532.06	3471270.16	1558347.59	40°51'13.010"N	103°47'46.990"W	polygon
SEC.07-T10N-R57W	13.00	75.02	-2532.06	3471270.16	1558347.59	40°51'13.010"N	103°47'46.990"W	polygon
HORSETAIL #07H-0615 BHL REV-1 (NIO B, 600'FNL & 495'FEL SEC 6)	5837.00	7421.45	26.89	3473686.76	1565742.15	40°52'25.600"N	103°47'13.690"W	point
HORSETAIL #07H-0615 BHL REV-2 (NIO B, 600'FNL & 495'FEL SEC 6)	5840.00	7421.45	26.89	3473686.76	1565742.15	40°52'25.600"N	103°47'13.690"W	point
HORSETAIL FED #07F NORTH HARDLINES 600'N, 100'S 1/2 SECTION, 300' E SEC 6, 100'W	5853.00	75.02	-2532.06	3471270.16	1558347.59	40°51'13.010"N	103°47'46.990"W	polygon

WELLPATH COMPOSITION - Ref Wellbore: HORSETAIL #07H-0615 AWB Ref Wellpath: HORSETAIL #07H-0615 AWP			
Start MD [ft]	End MD [ft]	Positional Uncertainty Model	Log Name/Comment
21.00	2029.00	Custom BHI NaviTrak (IFR1, Standard Rotating, SAG) (Rockies 0.03Gt model)	BHI/INTEQ NAVITRAK MWD ROCKIES GT, SURCON IFR SAG 13 1/2"<239-2029>
2029.00	13462.00	Custom BHI NaviTrak (IFR1, Standard Rotating, SAG) (Rockies 0.03Gt model)	BHI/INTEQ NAVITRAK MWD ROCKIES GT, SURCON IFR SAG 8 1/2"<2125-13462>
13462.00	13510.00	Blind Drilling (std)	Projection to bit



Actual Wellpath Report

HORSETAIL #07H-0615 AWP

Page 9 of 9



REFERENCE WELLPATH IDENTIFICATION			
Operator	WHITING OIL & GAS CORPORATION	Slot	SLOT#21 HORSETAIL #07H-0615 (2630'FSL & 540'FEL SEC 7)
Area	COLORADO	Well	HORSETAIL #07H-0615
Field	WELD COUNTY	Wellbore	HORSETAIL #07H-0615 AWB
Facility	SEC.07-T10N-R57W		

WELLPATH COMMENTS				
MD [ft]	Inclination [°]	Azimuth [°]	TVD [ft]	Comment
6169.00	77.897	358.057	5824.41	CROSSES 100' SETBACK (2561'FNL & 527'FEL SEC 7)
6172.00	78.161	358.030	5825.03	BOTTOM MARKER JOINT (2558'FNL & 527'FEL SEC 7)
13462.00	91.710	357.240	5821.85	LAST BHI MWD (664'FNL & 509'FEL SEC 6)
13510.00	91.710	357.240	5820.42	PROJ TO BIT (556'FNL & 511'FEL SEC 6)