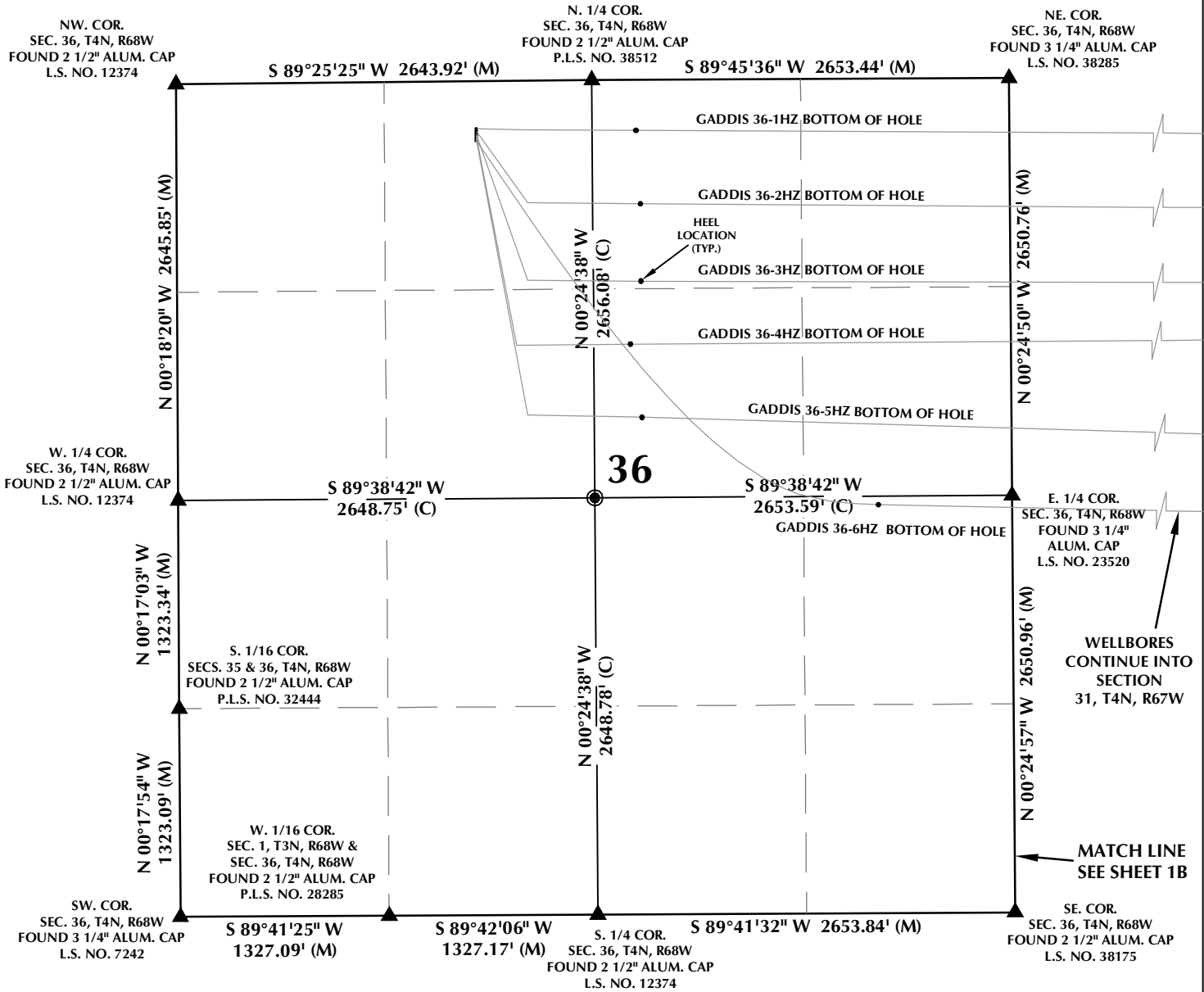


MULTI-WELL PLAN SECTION 36, T4N, R68W



WELL NOTES:

GADDIS 36-1HZ

SURFACE: 302' FNL, 1906' FWL, SEC. 36, T4N, R68W
BOTTOM HOLE: 225' FNL, 480' FEL, SEC. 32, T4N, R67W

GADDIS 36-2HZ

SURFACE: 317' FNL, 1906' FWL, SEC. 36, T4N, R68W
BOTTOM HOLE: 712' FNL, 479' FEL, SEC. 32, T4N, R67W

GADDIS 36-3HZ

SURFACE: 332' FNL, 1906' FWL, SEC. 36, T4N, R68W
BOTTOM HOLE: 1146' FNL, 479' FEL, SEC. 32, T4N, R67W

GADDIS 36-4HZ

SURFACE: 347' FNL, 1906' FWL, SEC. 36, T4N, R68W
BOTTOM HOLE: 1438' FNL, 481' FEL, SEC. 32, T4N, R67W

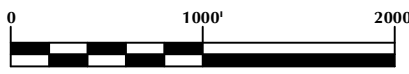
GADDIS 36-5HZ

SURFACE: 362' FNL, 1906' FWL, SEC. 36, T4N, R68W
BOTTOM HOLE: 2347' FNL, 481' FEL, SEC. 32, T4N, R67W

GADDIS 36-6HZ

SURFACE: 377' FNL, 1906' FWL, SEC. 36, T4N, R68W
BOTTOM HOLE: 2488' FSL, 482' FEL, SEC. 32, T4N, R67W

GRID



SCALE: 1" = 1000'

NOTES:

- ▲ INDICATES SECTION CORNER.
- INDICATES CALCULATED CORNER.
- BASIS OF BEARING DERIVED FROM COLORADO COORDINATE SYSTEM OF 1983 NORTH ZONE.
- ALL MEASURED DISTANCES ARE GRID.
COMBINED SCALE FACTOR: .99971900 CALCULATED FROM THE N. 1/4 CORNER OF SECTION 36, T4N, R68W.
WELL FOOTAGES ARE MEASURED AT RIGHT ANGLES TO THE SECTION LINES.

WELL PAD - GADDIS 3-36HZ

MULTI-WELL PLAN
GADDIS 36-1HZ, GADDIS 36-2HZ,
GADDIS 36-3HZ, GADDIS 36-4HZ,
GADDIS 36-5HZ & GADDIS 36-6HZ
LOCATED IN SECTION 36
T4N, R68W, 6TH P.M. &
SECTIONS 31 & 32, T4N, R67W, 6TH P.M.
WELD COUNTY, COLORADO

**Kerr-McGee Oil &
Gas Onshore L.P.**
1099 18th Street
Denver, Colorado 80202



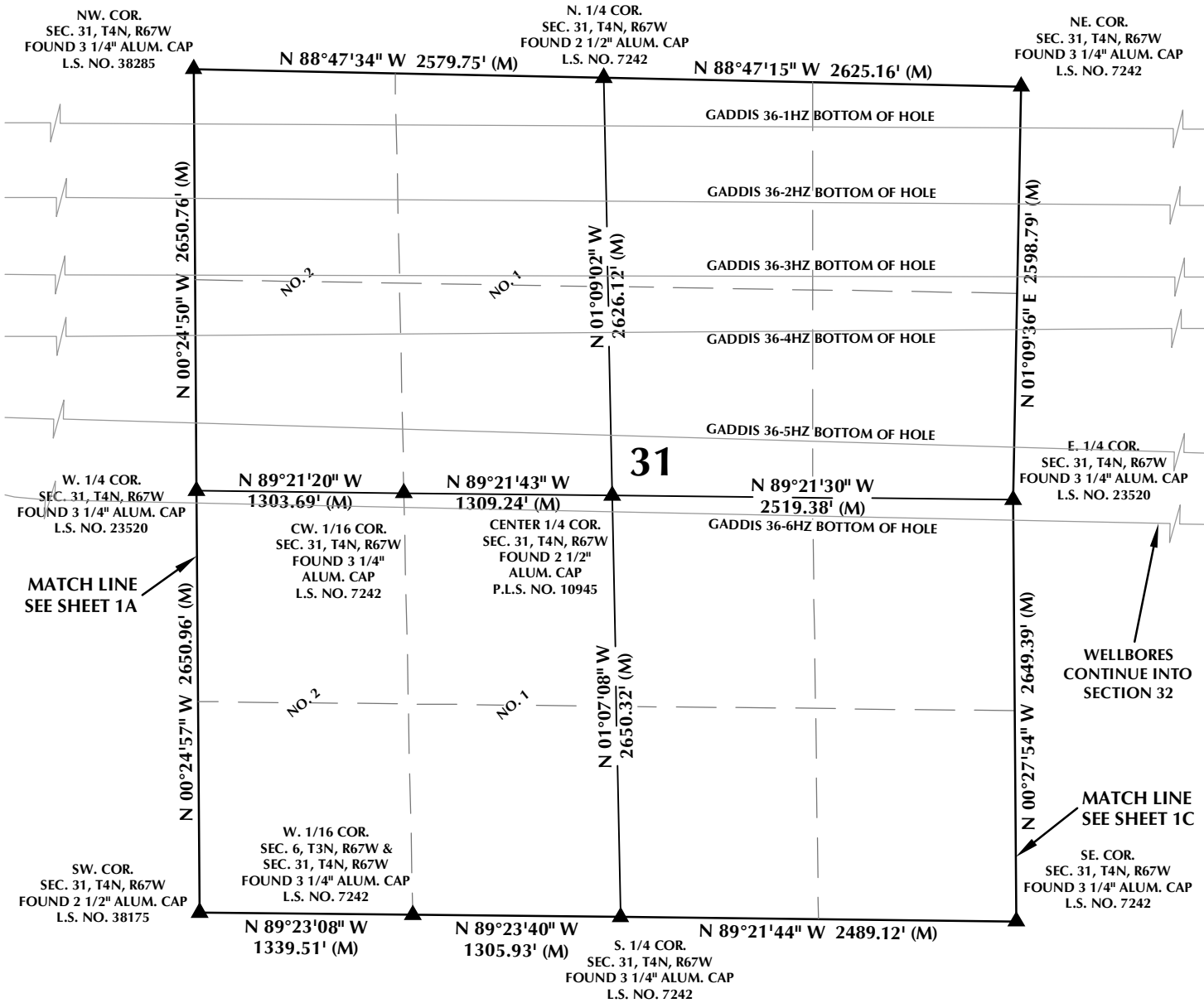
CONSULTING, LLC

SHERIDAN OFFICE
1095 Saberton Avenue
Sheridan, Wyoming 82801
Phone 307-674-0609

LOVELAND OFFICE
6706 North Franklin Avenue
Loveland, Colorado 80538
Phone 970-776-4331

DRAFTED BY: LMO	CHECKED BY: RKF	SHEET NO: 1A
DATE DRAFTED: 5/6/2020	DATE SURVEYED: 3/10/2020	1A OF 1
REVISED:	FILE NAME: 19-107	

MULTI-WELL PLAN SECTION 31, T4N, R67W



WELL NOTES:

GADDIS 36-1HZ
SURFACE: 302' FNL, 1906' FWL, SEC. 36, T4N, R68W
BOTTOM HOLE: 225' FNL, 480' FEL, SEC. 32, T4N, R67W

GADDIS 36-2HZ
SURFACE: 317' FNL, 1906' FWL, SEC. 36, T4N, R68W
BOTTOM HOLE: 712' FNL, 479' FEL, SEC. 32, T4N, R67W

GADDIS 36-3HZ
SURFACE: 332' FNL, 1906' FWL, SEC. 36, T4N, R68W
BOTTOM HOLE: 1146' FNL, 479' FEL, SEC. 32, T4N, R67W

GADDIS 36-4HZ
SURFACE: 347' FNL, 1906' FWL, SEC. 36, T4N, R68W
BOTTOM HOLE: 1438' FNL, 481' FEL, SEC. 32, T4N, R67W

GADDIS 36-5HZ
SURFACE: 362' FNL, 1906' FWL, SEC. 36, T4N, R68W
BOTTOM HOLE: 2347' FNL, 481' FEL, SEC. 32, T4N, R67W

GADDIS 36-6HZ
SURFACE: 377' FNL, 1906' FWL, SEC. 36, T4N, R68W
BOTTOM HOLE: 2488' FNL, 482' FEL, SEC. 32, T4N, R67W

NOTES:

- ▲ INDICATES SECTION CORNER.
- INDICATES CALCULATED CORNER.
- BASIS OF BEARING DERIVED FROM COLORADO COORDINATE SYSTEM OF 1983 NORTH ZONE.
- ALL MEASURED DISTANCES ARE GRID.
- COMBINED SCALE FACTOR: .99971900 CALCULATED FROM THE N. 1/4 CORNER OF SECTION 36, T4N, R68W.
- WELL FOOTAGES ARE MEASURED AT RIGHT ANGLES TO THE SECTION LINES.
- NO. 1 & NO. 2 AS SHOWN HEREON ARE GOVERNMENT LOTS 1 & 2 PER THE ORIGINAL GLO SURVEY.

WELL PAD - GADDIS 3-36HZ

MULTI-WELL PLAN
GADDIS 36-1HZ, GADDIS 36-2HZ,
GADDIS 36-3HZ, GADDIS 36-4HZ,
GADDIS 36-5HZ & GADDIS 36-6HZ
LOCATED IN SECTION 36
T4N, R68W, 6TH P.M. &
SECTIONS 31 & 32, T4N, R67W, 6TH P.M.
WELD COUNTY, COLORADO

**Kerr-McGee Oil &
Gas Onshore L.P.**
1099 18th Street
Denver, Colorado 80202



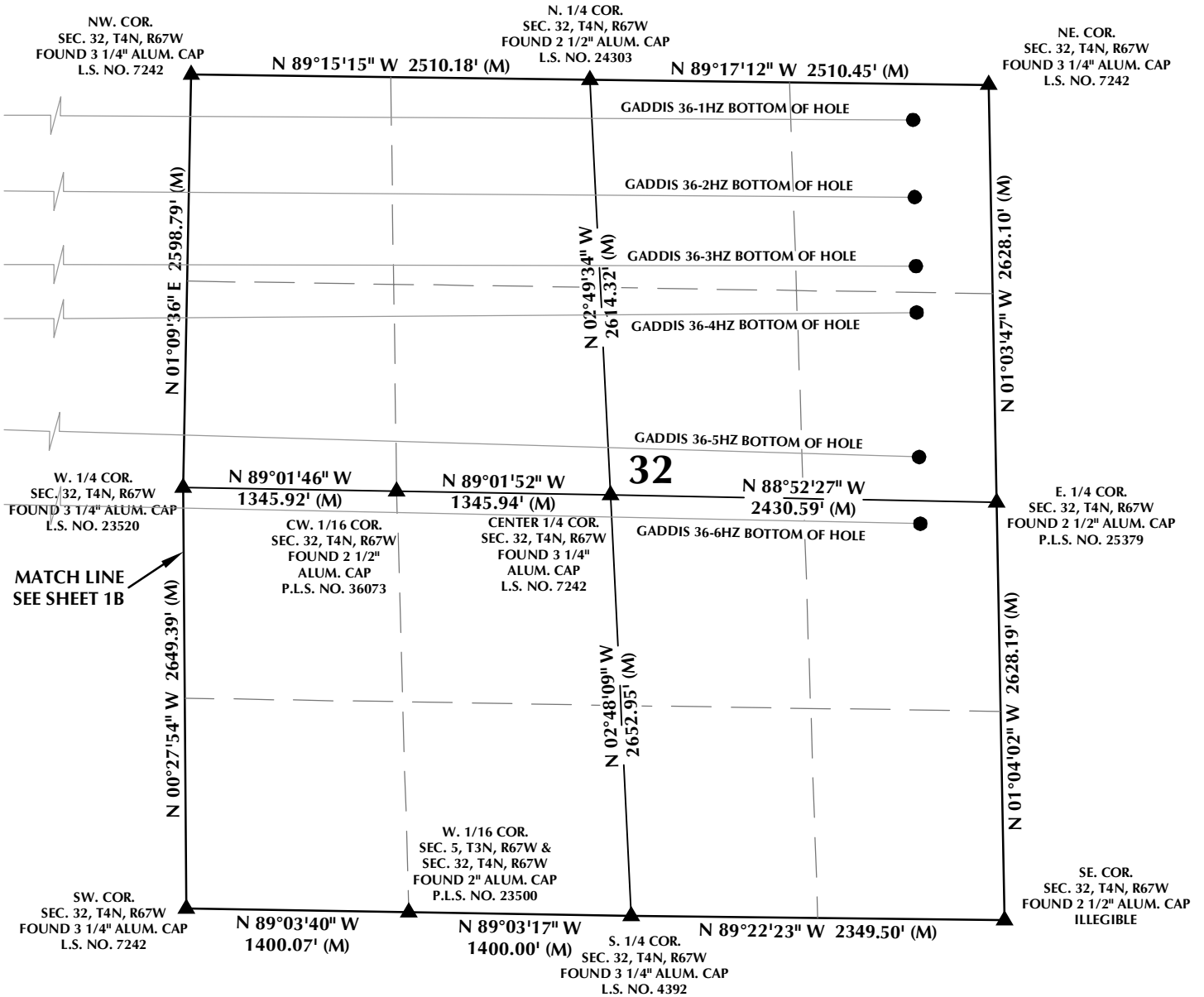
CONSULTING, LLC

SHERIDAN OFFICE
1095 Saberton Avenue
Sheridan, Wyoming 82801
Phone 307-674-0609

LOVELAND OFFICE
6706 North Franklin Avenue
Loveland, Colorado 80538
Phone 970-776-4331

DRAFTED BY:	LMO	CHECKED BY:	RKF	SHEET NO:
DATE DRAFTED:	5/6/2020	DATE SURVEYED:	3/10/2020	1B
REVISED:		FILE NAME:	19-107	1B OF 1

MULTI-WELL PLAN SECTION 32, T4N, R67W



WELL NOTES:

GADDIS 36-1HZ
 SURFACE: 302' FNL, 1906' FWL, SEC. 36, T4N, R68W
 BOTTOM HOLE: 225' FNL, 480' FEL, SEC. 32, T4N, R67W

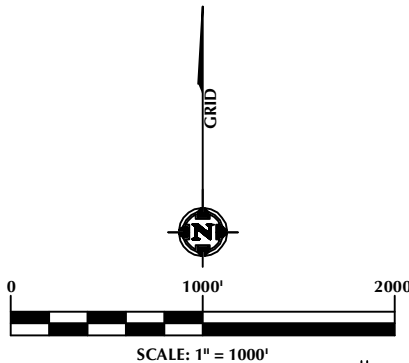
GADDIS 36-2HZ
 SURFACE: 317' FNL, 1906' FWL, SEC. 36, T4N, R68W
 BOTTOM HOLE: 712' FNL, 479' FEL, SEC. 32, T4N, R67W

GADDIS 36-3HZ
 SURFACE: 332' FNL, 1906' FWL, SEC. 36, T4N, R68W
 BOTTOM HOLE: 1146' FNL, 479' FEL, SEC. 32, T4N, R67W

GADDIS 36-4HZ
 SURFACE: 347' FNL, 1906' FWL, SEC. 36, T4N, R68W
 BOTTOM HOLE: 1438' FNL, 481' FEL, SEC. 32, T4N, R67W

GADDIS 36-5HZ
 SURFACE: 362' FNL, 1906' FWL, SEC. 36, T4N, R68W
 BOTTOM HOLE: 2347' FNL, 481' FEL, SEC. 32, T4N, R67W

GADDIS 36-6HZ
 SURFACE: 377' FNL, 1906' FWL, SEC. 36, T4N, R68W
 BOTTOM HOLE: 2488' FNL, 482' FEL, SEC. 32, T4N, R67W



NOTES:

- ▲ INDICATES SECTION CORNER.
- INDICATES CALCULATED CORNER.
- BASIS OF BEARING DERIVED FROM COLORADO COORDINATE SYSTEM OF 1983 NORTH ZONE.
- ALL MEASURED DISTANCES ARE GRID.
 COMBINED SCALE FACTOR: .99971900 CALCULATED FROM THE N. 1/4 CORNER OF SECTION 36, T4N, R68W.
 WELL FOOTAGES ARE MEASURED AT RIGHT ANGLES TO THE SECTION LINES.

WELL PAD - GADDIS 3-36HZ

MULTI-WELL PLAN
 GADDIS 36-1HZ, GADDIS 36-2HZ,
 GADDIS 36-3HZ, GADDIS 36-4HZ,
 GADDIS 36-5HZ & GADDIS 36-6HZ
 LOCATED IN SECTION 36
 T4N, R68W, 6TH P.M. &
 SECTIONS 31 & 32, T4N, R67W, 6TH P.M.
 WELD COUNTY, COLORADO

**Kerr-McGee Oil &
 Gas Onshore L.P.**
 1099 18th Street
 Denver, Colorado 80202



CONSULTING, LLC

SHERIDAN OFFICE
 1095 Saberton Avenue
 Sheridan, Wyoming 82801
 Phone 307-674-0609

LOVELAND OFFICE
 6706 North Franklin Avenue
 Loveland, Colorado 80538
 Phone 970-776-4331

DRAFTED BY: LMO	CHECKED BY: RKF	SHEET NO: 1C
DATE DRAFTED: 5/6/2020	DATE SURVEYED: 3/10/2020	1C OF 1
REVISED:	FILE NAME: 19-107	