



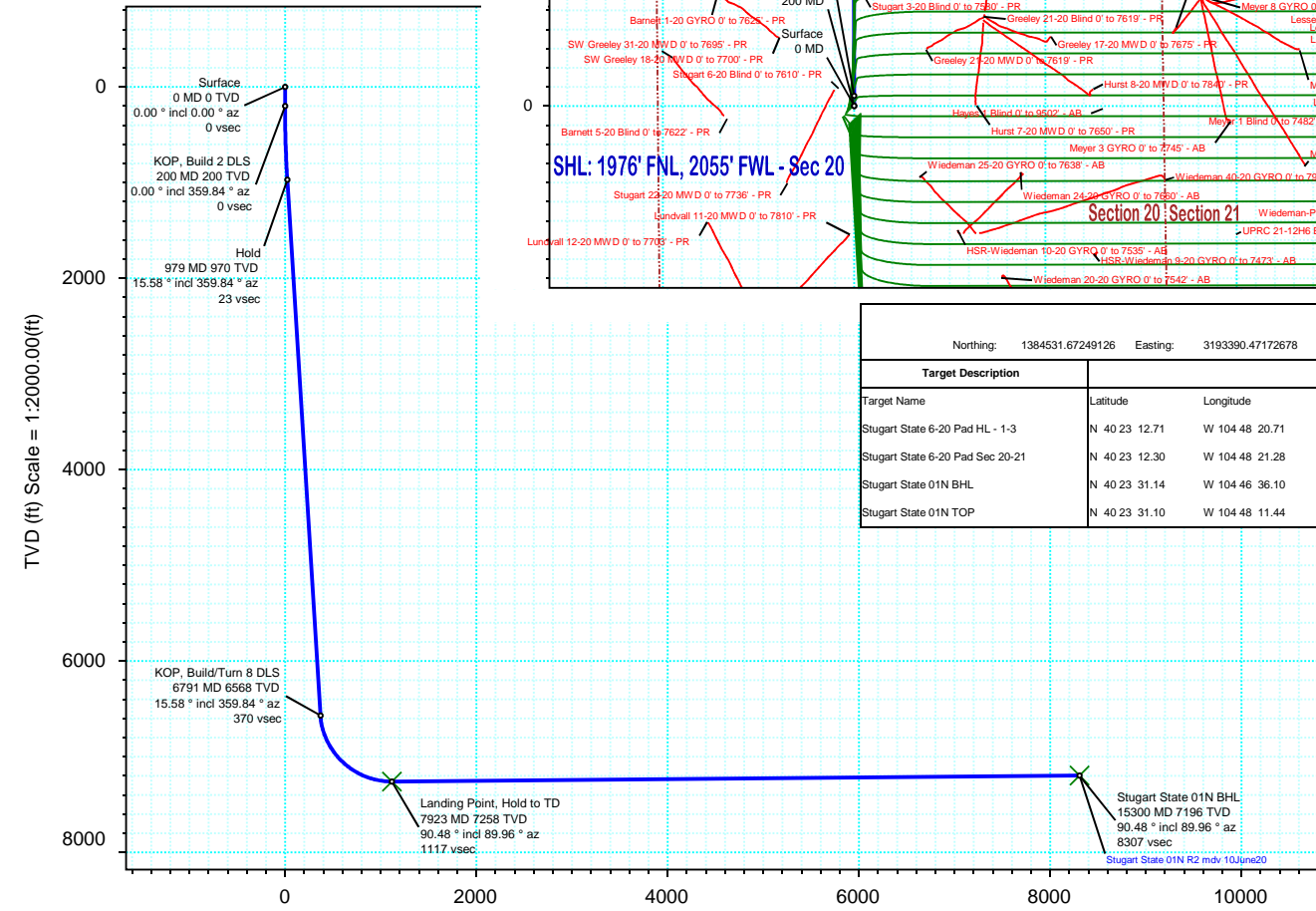
Borehole: Original Hole	Well: Stugart State 01N	Field: CO, Weld County (NAD 83 NZ) - SRC	Structure: PDC Energy 20-05N-66W (Stugart State 6-20 Pad)
-----------------------------------	-----------------------------------	--	---

Gravity & Magnetic Parameters		Surface Location NAD83 Colorado State Plane, Northern Zone, US Feet		Miscellaneous	
Model: HDGM 2020	Dip: 66.728°	Date: 17-Jun-2020	Lat: N 40 23 12.71	Northing: 1384531.67ftUS	Grid Conv: 0.4486°
MagDec: 8.129°	FS: 52099.711nT	Gravity FS: 999.013mgn (9.80665 Based)	Lon: W 104 48 20.71	Easting: 3193390.47ftUS	Scale Fact: 0.99995966
			Slot: Stugart State 01N	TVD Ref: KB 4ft(4948ft above MSL)	Plan: Stugart State 01N R2 mdv 10June20

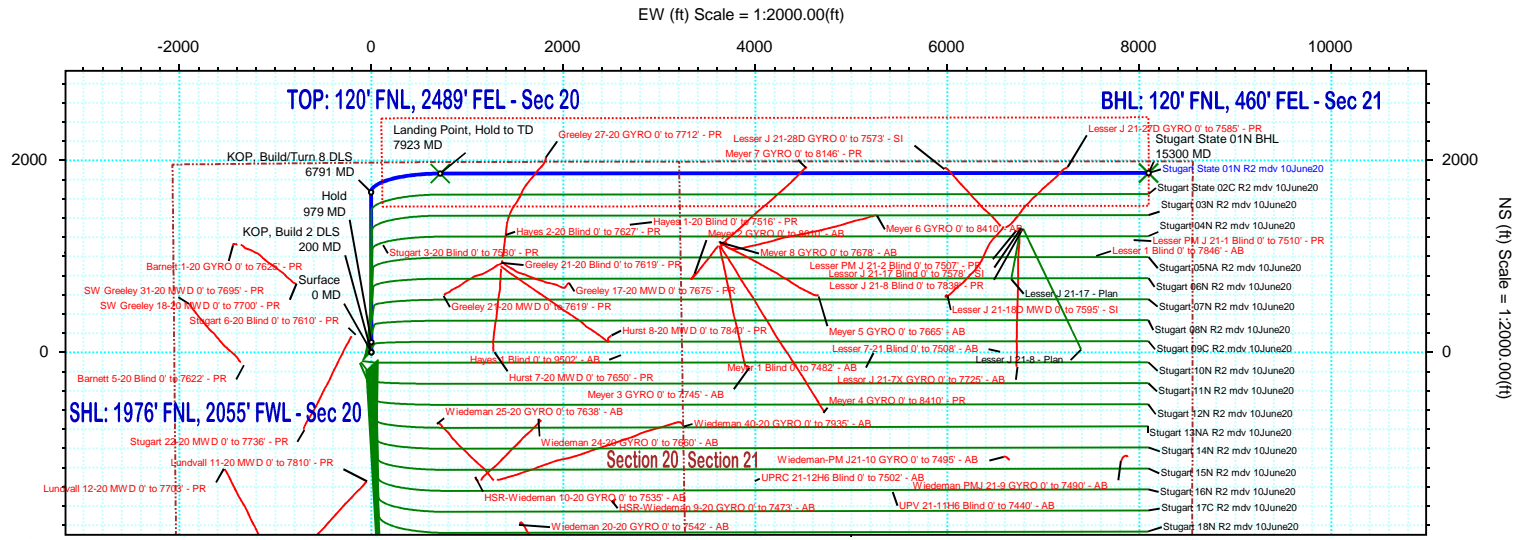
Proposal



True North
Tot Corr (M->T 8.129°)
Mag Dec (8.129°)
Grid Conv (0.449°)



Vertical Section (ft) Azim = 77.01° Scale = 1:2000.00(ft) Origin = 0N/-S, 0E/-W



Surface Location								
Northing: 1384531.67249126		Easting: 3193390.47172678		Latitude: N 40 23 12.71		Longitude: W 104 48 20.71		
VSec Azimuth: 77.01								
Target Description	Grid Coord		Local Coord					
Target Name	Latitude	Longitude	Northing	Easting	TVD	VSec	N(+)/S(-)	E(+)/W(-)
Stugart State 6-20 Pad HL - 1-3	N 40 23 12.71	W 104 48 20.71	1384531.67	3193390.47	4948.00	0.00	0.00	0.00
Stugart State 6-20 Pad Sec 20-21	N 40 23 12.30	W 104 48 21.28	1384490.53	3193346.78	4948.00	-52.06	-40.80	-44.02
Stugart State 01N BHL	N 40 23 31.14	W 104 46 36.10	1386461.77	3201469.78	7196.00	8307.00	1866.87	8094.51
Stugart State 01N TOP	N 40 23 31.10	W 104 48 11.44	1386398.46	3194093.05	7258.00	1117.16	1861.31	717.20

Critical Points								
Critical Point	MD	INCL	AZIM	TVD	VSEC	N(+)/S(-)	E(+)/W(-)	DLS
Surface	0.00	0.00	0.00	0.00	0.00	0.00	0.00	0.00
KOP, Build 2 DLS	200.00	0.00	359.84	200.00	0.00	0.00	0.00	0.00
Hold	979.16	15.58	359.84	969.59	23.38	105.31	-0.29	2.00
KOP, Build/Turn 8 DLS	6791.44	15.58	359.84	6568.21	370.04	1666.70	-4.64	0.00
Landing Point, Hold to TD	7922.62	90.48	89.96	7258.00	1117.16	1861.31	717.20	8.00
Stugart State 01N BHL	15300.20	90.48	89.96	7196.00	8307.00	1866.87	8094.51	0.00

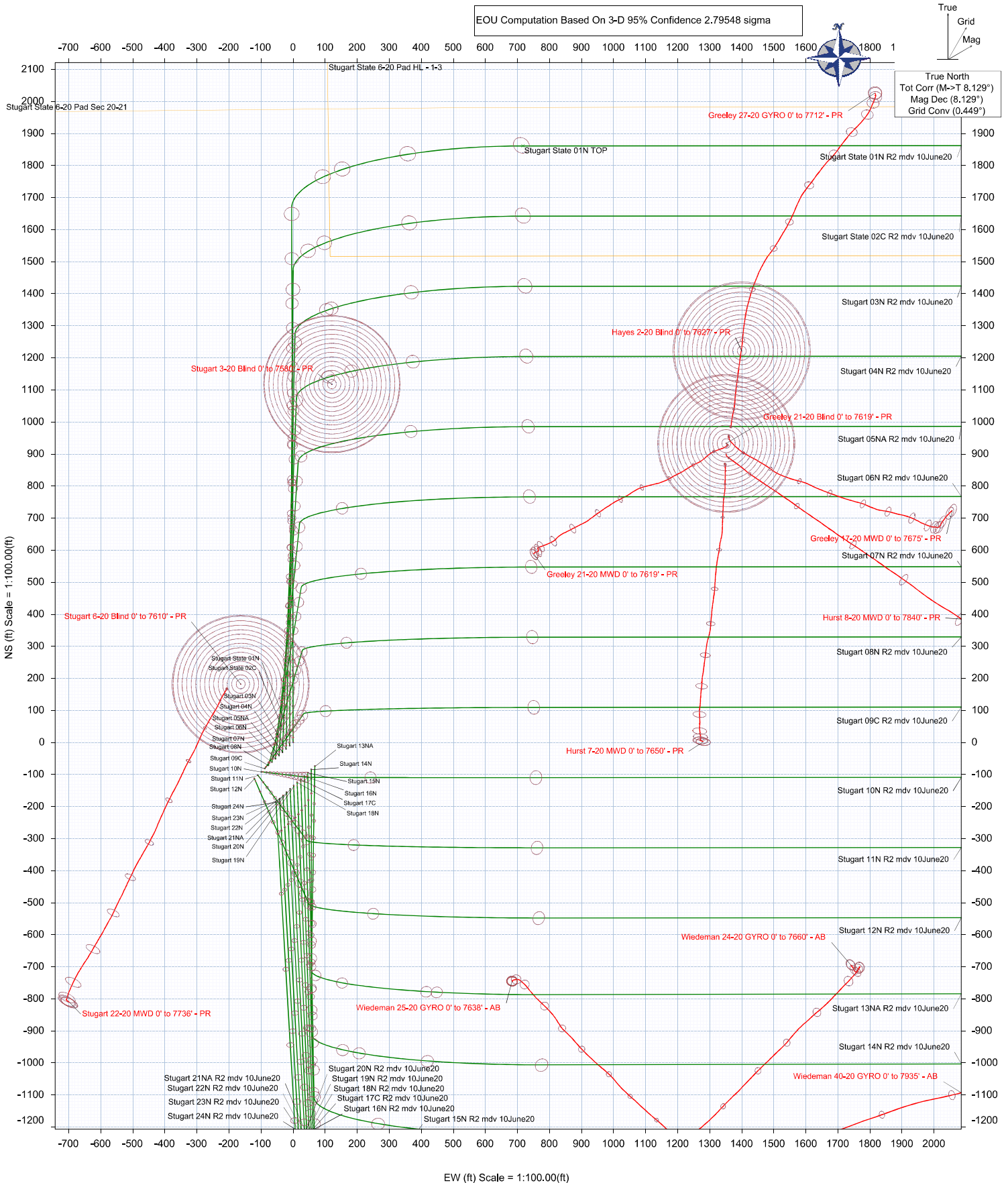
NS (ft) Scale = 1:2000.00(ft)



Borehole: Original Hole	Well: Stugart State 01N	Field: CO, Weld County (NAD 83 NZ) - SRC	Structure: PDC Energy 20-05N-66W (Stugart State 6-20 Pad)
-----------------------------------	-----------------------------------	--	---

Gravity & Magnetic Parameters Model: HDGM 2020 Dip: 66.728° Date: 17-Jun-2020 MagDec: 8.129° FS: 52099.711nT Gravity FS: 999.013mgn (9.80665 Based)	Surface Location NAD83 Colorado State Plane, Northern Zone, US Feet Lat: N 40 23 12.71 Northing: 1384531.67HUS Grid Conv: 0.4486° Lon: W 104 48 20.71 Easting: 3193390.47HUS Scale Fact: 0.99995966	Miscellaneous Stugart State Slot: 01N Plan: Stugart State 01N R2 mdv 10June20 TVD Ref: KB 4ft(4948ft above MSL)
--	--	--

EOU Computation Based On 3-D 95% Confidence 2.79548 sigma





PDC Energy

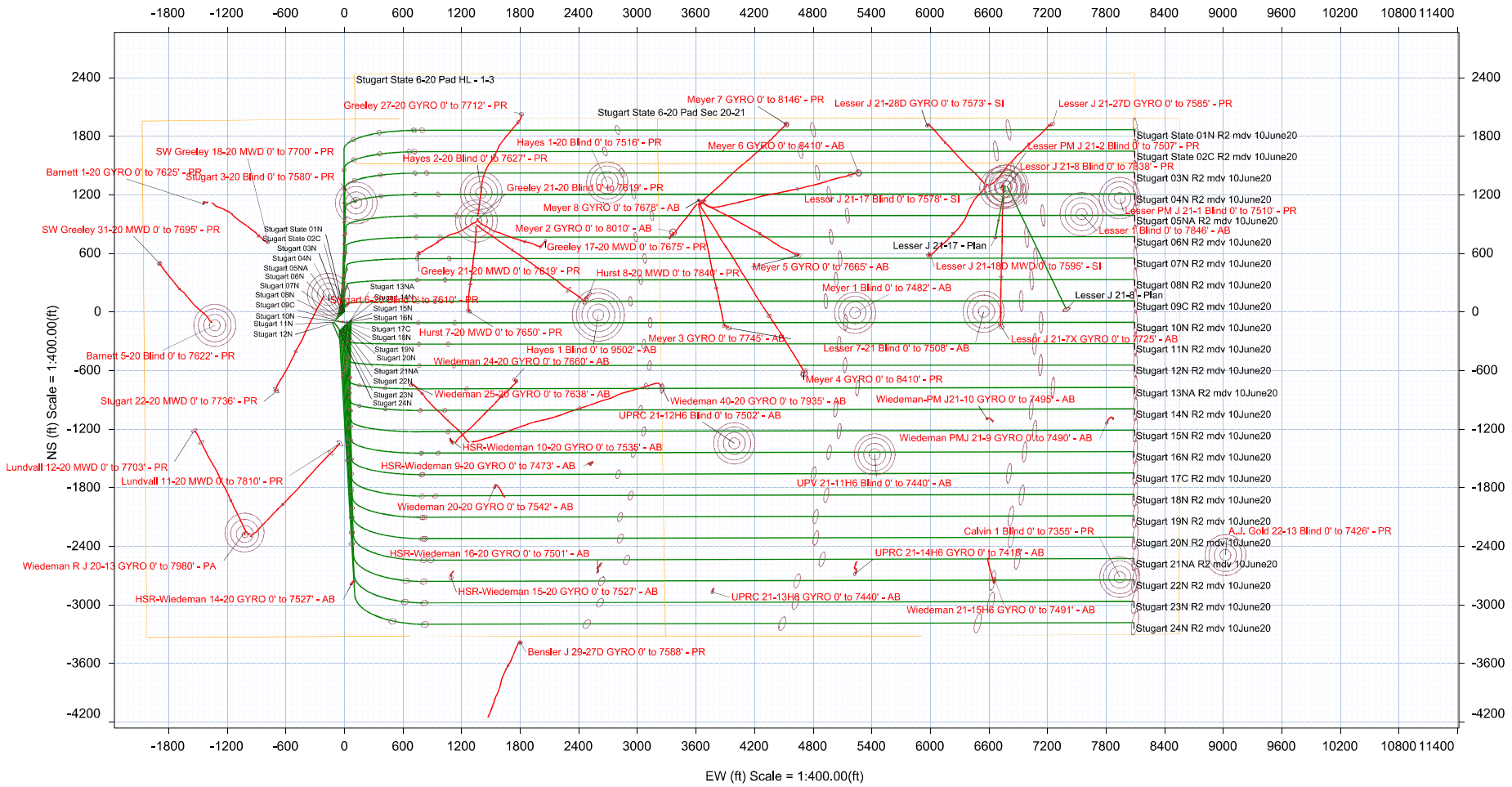


True North
 Tot Corr (M→T 8.129°)
 Mag Dec (8.129°)
 Grid Conv (0.449")

Borehole:	Well:	Field:	Structure:
Original Hole	Stugart State 01N	CO, Weld County (NAD 83 NZ) - SRC	PDC Energy 20-05N-66W (Stugart State 6-20 Pad)

Gravity & Magnetic Parameters		Surface Location		NAD83 Colorado State Plane, Northern Zone, US Feet		Miscellaneous	
Model: HDGM 2020	Dip: 66.728°	Date: 17-Jun-2020	Lat: N 40 23 12.71	Northing: 1384531.67RUS	Grid Conv: 0.4486"	Slot: Stugart State 01N	TVD Ref: KB 4ft(4948ft above MSL)
MagDec: 8.129°	FS: 52099.711nT	Gravity FS: 999.013mgN (8.80665 Based)	Lon: W 104 48 20.71	Easting: 3193390.47RUS	Scale Fact: 0.99995966	Plan: Stugart State 01N R2 mdv 10June20	

EOU Computation Based On 3-D 95% Confidence 2.79548 sigma



Stugart State 01N R2 mdv 10June20 Proposal Geodetic Report

(Def Plan)

Report Date: June 17, 2020 - 11:47 AM
Client: PDC Energy
Field: CO, Weld County (NAD 83 NZ) - SRC
Structure / Slot: PDC Energy 20-05N-66W (Stugart State 6-20 Pad) / Stugart State 01N
Well: Stugart State 01N
Borehole: Original Hole
UWI / API#: Unknown / Unknown
Survey Name: Stugart State 01N R2 mdv 10June20
Survey Date: September 25, 2019
Tort / AHD / DDI / ERD Ratio: 106.078 ° / 9824.497 ft / 6.342 / 1.354
Coordinate Reference System: NAD83 Colorado State Plane, Northern Zone, US Feet
Location Lat / Long: N 40° 23' 12.70680", W 104° 48' 20.71080"
Location Grid N/E Y/X: N 1384531.672 ftUS, E 3193390.472 ftUS
CRS Grid Convergence Angle: 0.4486 °
Grid Scale Factor: 0.99995966
Version / Patch: 2.10.811.0

Survey / DLS Computation: Minimum Curvature / Lubinski
Vertical Section Azimuth: 77.013 ° (True North)
Vertical Section Origin: 0.000 ft, 0.000 ft
TVD Reference Datum: KB 4ft
TVD Reference Elevation: 4948.000 ft above MSL
Seabed / Ground Elevation: 4944.000 ft above MSL
Magnetic Declination: 8.129 °
Total Gravity Field Strength: 999.0133mgn (9.80665 Based)
Gravity Model: GARM
Total Magnetic Field Strength: 52099.711 nT
Magnetic Dip Angle: 66.728 °
Declination Date: June 17, 2020
Magnetic Declination Model: HDGM 2020
North Reference: True North
Grid Convergence Used: 0.0000 °
Total Corr Mag North->True North: 8.1292 °
Local Coord Referenced To: Well Head

Comments	MD (ft)	Incl (°)	Azim True (°)	TVD (ft)	VSEC (ft)	NS (ft)	EW (ft)	DLS (°/100ft)	Northing (ftUS)	Easting (ftUS)	Latitude (°)	Longitude (°)
Surface	0.00	0.00	0.00	0.00	0.00	0.00	0.00	N/A	1384531.67	3193390.47	40.386863	-104.805753
KOP, Build 2 DLS	100.00	0.00	359.84	100.00	0.00	0.00	0.00	0.00	1384531.67	3193390.47	40.386863	-104.805753
	200.00	0.00	359.84	200.00	0.00	0.00	0.00	0.00	1384531.67	3193390.47	40.386863	-104.805753
	300.00	2.00	359.84	299.98	0.39	1.75	0.00	2.00	1384533.42	3193390.45	40.386868	-104.805753
	400.00	4.00	359.84	399.84	1.55	6.98	-0.02	2.00	1384538.65	3193390.40	40.386882	-104.805753
	500.00	6.00	359.84	499.45	3.48	15.69	-0.04	2.00	1384547.36	3193390.31	40.386906	-104.805753
	600.00	8.00	359.84	598.70	6.19	27.88	-0.08	2.00	1384559.55	3193390.18	40.386940	-104.805753
	700.00	10.00	359.84	697.47	9.66	43.52	-0.12	2.00	1384575.19	3193390.01	40.386982	-104.805753
	800.00	12.00	359.84	795.62	13.90	62.60	-0.17	2.00	1384594.27	3193389.81	40.387035	-104.805754
	900.00	14.00	359.84	893.06	18.89	85.10	-0.24	2.00	1384616.76	3193389.57	40.387097	-104.805754
Hold	979.16	15.58	359.84	969.59	23.38	105.31	-0.29	2.00	1384636.97	3193389.35	40.387152	-104.805754
	1000.00	15.58	359.84	989.66	24.62	110.90	-0.31	0.00	1384642.57	3193389.29	40.387167	-104.805754
	1100.00	15.58	359.84	1085.99	30.59	137.77	-0.38	0.00	1384669.43	3193389.01	40.387241	-104.805754
	1200.00	15.58	359.84	1182.31	36.55	164.63	-0.46	0.00	1384696.29	3193388.72	40.387315	-104.805755
	1300.00	15.58	359.84	1278.64	42.52	191.49	-0.53	0.00	1384723.15	3193388.44	40.387389	-104.805755
	1400.00	15.58	359.84	1374.96	48.48	218.36	-0.61	0.00	1384750.01	3193388.15	40.387462	-104.805755
	1500.00	15.58	359.84	1471.28	54.44	245.22	-0.68	0.00	1384776.87	3193387.87	40.387536	-104.805755
	1600.00	15.58	359.84	1567.61	60.41	272.09	-0.76	0.00	1384803.73	3193387.58	40.387610	-104.805756
	1700.00	15.58	359.84	1663.93	66.37	298.95	-0.83	0.00	1384830.59	3193387.30	40.387684	-104.805756
	1800.00	15.58	359.84	1760.26	72.34	325.81	-0.91	0.00	1384857.45	3193387.01	40.387757	-104.805756
	1900.00	15.58	359.84	1856.58	78.30	352.68	-0.98	0.00	1384884.32	3193386.73	40.387831	-104.805757
	2000.00	15.58	359.84	1952.90	84.27	379.54	-1.06	0.00	1384911.18	3193386.44	40.387905	-104.805757
	2100.00	15.58	359.84	2049.23	90.23	406.40	-1.13	0.00	1384938.04	3193386.16	40.387979	-104.805757
	2200.00	15.58	359.84	2145.55	96.19	433.27	-1.21	0.00	1384964.90	3193385.87	40.388052	-104.805757
	2300.00	15.58	359.84	2241.88	102.16	460.13	-1.28	0.00	1384991.76	3193385.59	40.388126	-104.805758
	2400.00	15.58	359.84	2338.20	108.12	487.00	-1.36	0.00	1385018.62	3193385.30	40.388200	-104.805758
	2500.00	15.58	359.84	2434.53	114.09	513.86	-1.43	0.00	1385045.48	3193385.02	40.388273	-104.805758
	2600.00	15.58	359.84	2530.85	120.05	540.72	-1.51	0.00	1385072.34	3193384.73	40.388347	-104.805758
	2700.00	15.58	359.84	2627.17	126.01	567.59	-1.58	0.00	1385099.20	3193384.45	40.388421	-104.805759
	2800.00	15.58	359.84	2723.50	131.98	594.45	-1.66	0.00	1385126.07	3193384.16	40.388495	-104.805759
	2900.00	15.58	359.84	2819.82	137.94	621.31	-1.73	0.00	1385152.93	3193383.88	40.388568	-104.805759
	3000.00	15.58	359.84	2916.15	143.91	648.18	-1.81	0.00	1385179.79	3193383.59	40.388642	-104.805759
	3100.00	15.58	359.84	3012.47	149.87	675.04	-1.88	0.00	1385206.65	3193383.31	40.388716	-104.805760
	3200.00	15.58	359.84	3108.79	155.84	701.90	-1.96	0.00	1385233.51	3193383.02	40.388790	-104.805760
	3300.00	15.58	359.84	3205.12	161.80	728.77	-2.03	0.00	1385260.37	3193382.74	40.388863	-104.805760
	3400.00	15.58	359.84	3301.44	167.76	755.63	-2.11	0.00	1385287.23	3193382.45	40.388937	-104.805761
	3500.00	15.58	359.84	3397.77	173.73	782.50	-2.18	0.00	1385314.09	3193382.17	40.389011	-104.805761
	3600.00	15.58	359.84	3494.09	179.69	809.36	-2.26	0.00	1385340.96	3193381.88	40.389085	-104.805761
	3700.00	15.58	359.84	3590.41	185.66	836.22	-2.33	0.00	1385367.82	3193381.60	40.389158	-104.805761
	3800.00	15.58	359.84	3686.74	191.62	863.09	-2.40	0.00	1385394.68	3193381.31	40.389232	-104.805762
	3900.00	15.58	359.84	3783.06	197.59	889.95	-2.48	0.00	1385421.54	3193381.02	40.389306	-104.805762
	4000.00	15.58	359.84	3879.39	203.55	916.81	-2.55	0.00	1385448.40	3193380.74	40.389380	-104.805762
	4100.00	15.58	359.84	3975.71	209.51	943.68	-2.63	0.00	1385475.26	3193380.45	40.389453	-104.805762
	4200.00	15.58	359.84	4072.04	215.48	970.54	-2.70	0.00	1385502.12	3193380.17	40.389527	-104.805763
	4300.00	15.58	359.84	4168.36	221.44	997.41	-2.78	0.00	1385528.98	3193379.88	40.389601	-104.805763
	4400.00	15.58	359.84	4264.68	227.41	1024.27	-2.85	0.00	1385555.84	3193379.60	40.389675	-104.805763
	4500.00	15.58	359.84	4361.01	233.37	1051.13	-2.93	0.00	1385582.71	3193379.31	40.389748	-104.805764
	4600.00	15.58	359.84	4457.33	239.34	1078.00	-3.00	0.00	1385609.57	3193379.03	40.389822	-104.805764
	4700.00	15.58	359.84	4553.66	245.30	1104.86	-3.08	0.00	1385636.43	3193378.74	40.389896	-104.805764
	4800.00	15.58	359.84	4649.98	251.26	1131.72	-3.15	0.00	1385663.29	3193378.46	40.389969	-104.805764
	4900.00	15.58	359.84	4746.30	257.23	1158.59	-3.23	0.00	1385690.15	3193378.17	40.390043	-104.805765
	5000.00	15.58	359.84	4842.63	263.19	1185.45	-3.30	0.00	1385717.01	3193377.89	40.390117	-104.805765
	5100.00	15.58	359.84	4938.95	269.16	1212.31	-3.38	0.00	1385743.87	3193377.60	40.390191	-104.805765
	5200.00	15.58	359.84	5035.28	275.12	1239.18	-3.45	0.00	1385770.73	3193377.32	40.390264	-104.805765
	5300.00	15.58	359.84	5131.60	281.09	1266.04	-3.53	0.00	1385797.59	3193377.03	40.390338	-104.805766
	5400.00	15.58	359.84	5227.92	287.05	1292.91	-3.60	0.00	1385824.45	3193376.75	40.390412	-104.805766
	5500.00	15.58	359.84	5324.25	293.01	1319.77	-3.68	0.00	1385851.32	3193376.46	40.390486	-104.805766
	5600.00	15.58	359.84	5420.57	298.98	1346.63	-3.75	0.00	1385878.18	3193376.18	40.390559	-104.805766
	5700.00	15.58	359.84	5516.90	304.94	1373.50	-3.83	0.00	1385905.04	3193375.89	40.390633	-104.805767
	5800.00	15.58	359.84	5613.22	310.91	1400.36	-3.90	0.00	1385931.90	3193375.61	40.390707	-104.805767
	5900.00	15.58	359.84	5709.55	316.87	1427.22	-3.98	0.00	1385958.76	3193375.32	40.390781	-104.805767
	6000.00	15.58	359.84	5805.87	322.84	1454.09	-4.05	0.00	1385985.62	3193375.04	40.390854	-104.805768
	6100.00	15.58	359.84	5902.19	328.80	1480.95	-4.13	0.00	1386012.48	3193374.75	40.390928	-104.805768
	6200.00	15.58	359.84	5998.52	334.76	1507.82	-4.20	0.00	1386039.34	3193374.47	40.391002	-104.805768
	6300.00	15.58	359.84	6094.84	340.73	1534.68	-4.28	0.00	1386066.21	3193374.18	40.391076	-104.805768
	6400.00	15.58	359.84	6191.17	346.69	1561.54	-4.35	0.00	1386093.07	3193373.90	40.391149	-104.805769
	6500.00	15.58	359.84	6287.49	352.66	1588.41	-4.43	0.00	13861			

Comments	MD (ft)	Incl (°)	Azim True (°)	TVD (ft)	VSEC (ft)	NS (ft)	EW (ft)	DLS (°/100ft)	Northing (ftUS)	Easting (ftUS)	Latitude (°)	Longitude (°)
	7300.00	43.08	72.47	7017.93	566.68	1792.65	168.11	8.00	1386325.51	3193544.53	40.391784	-104.805150
	7400.00	50.52	76.54	7086.35	639.43	1811.95	238.32	8.00	1386345.36	3193614.59	40.391837	-104.804897
	7500.00	58.06	79.81	7144.69	720.53	1828.47	317.74	8.00	1386362.50	3193693.87	40.391882	-104.804612
	7600.00	65.68	82.58	7191.80	808.40	1841.88	404.83	8.00	1386376.59	3193780.85	40.391919	-104.804300
	7700.00	73.35	85.04	7226.78	901.34	1851.92	497.88	8.00	1386387.36	3193873.82	40.391946	-104.803966
	7800.00	81.04	87.30	7248.94	997.52	1858.40	595.10	8.00	1386394.60	3193970.98	40.391964	-104.803617
	7900.00	88.74	89.47	7257.85	1095.09	1861.19	694.58	8.00	1386398.17	3194070.43	40.391972	-104.803259
Landing Point, Hold to TD	7922.62	90.48	89.96	7258.00	1117.16	1861.31	717.20	8.00	1386398.46	3194093.05	40.391972	-104.803178
	8000.00	90.48	89.96	7257.35	1192.56	1861.37	794.58	0.00	1386399.12	3194170.42	40.391972	-104.802901
	8100.00	90.48	89.96	7256.51	1290.02	1861.44	894.57	0.00	1386399.98	3194270.41	40.391972	-104.802542
	8200.00	90.48	89.96	7255.67	1387.47	1861.52	994.57	0.00	1386400.84	3194370.39	40.391973	-104.802183
	8300.00	90.48	89.96	7254.83	1484.93	1861.59	1094.56	0.00	1386401.70	3194470.38	40.391973	-104.801824
	8400.00	90.48	89.96	7253.99	1582.38	1861.67	1194.56	0.00	1386402.56	3194570.37	40.391973	-104.801465
	8500.00	90.48	89.96	7253.15	1679.84	1861.74	1294.56	0.00	1386403.41	3194670.36	40.391973	-104.801106
	8600.00	90.48	89.96	7252.31	1777.30	1861.82	1394.55	0.00	1386404.27	3194770.35	40.391973	-104.800747
	8700.00	90.48	89.96	7251.47	1874.75	1861.89	1494.55	0.00	1386405.13	3194870.34	40.391974	-104.800388
	8800.00	90.48	89.96	7250.63	1972.21	1861.97	1594.55	0.00	1386405.99	3194970.33	40.391974	-104.800029
	8900.00	90.48	89.96	7249.79	2069.66	1862.04	1694.54	0.00	1386406.85	3195070.31	40.391974	-104.799670
	9000.00	90.48	89.96	7248.95	2167.12	1862.12	1794.54	0.00	1386407.71	3195170.30	40.391974	-104.799311
	9100.00	90.48	89.96	7248.11	2264.57	1862.19	1894.54	0.00	1386408.56	3195270.29	40.391974	-104.798952
	9200.00	90.48	89.96	7247.27	2362.03	1862.27	1994.53	0.00	1386409.42	3195370.28	40.391975	-104.798593
	9300.00	90.48	89.96	7246.42	2459.48	1862.35	2094.53	0.00	1386410.28	3195470.27	40.391975	-104.798234
	9400.00	90.48	89.96	7245.58	2556.94	1862.42	2194.53	0.00	1386411.14	3195570.26	40.391975	-104.797875
	9500.00	90.48	89.96	7244.74	2654.39	1862.50	2294.52	0.00	1386412.00	3195670.24	40.391975	-104.797516
	9600.00	90.48	89.96	7243.90	2751.85	1862.57	2394.52	0.00	1386412.85	3195770.23	40.391975	-104.797157
	9700.00	90.48	89.96	7243.06	2849.31	1862.65	2494.51	0.00	1386413.71	3195870.22	40.391975	-104.796798
	9800.00	90.48	89.96	7242.22	2946.76	1862.72	2594.51	0.00	1386414.57	3195970.21	40.391976	-104.796439
	9900.00	90.48	89.96	7241.38	3044.22	1862.80	2694.51	0.00	1386415.43	3196070.20	40.391976	-104.796080
	10000.00	90.48	89.96	7240.54	3141.67	1862.87	2794.50	0.00	1386416.29	3196170.19	40.391976	-104.795721
	10100.00	90.48	89.96	7239.70	3239.13	1862.95	2894.50	0.00	1386417.15	3196270.18	40.391976	-104.795362
	10200.00	90.48	89.96	7238.86	3336.58	1863.02	2994.50	0.00	1386418.00	3196370.16	40.391976	-104.795003
	10300.00	90.48	89.96	7238.02	3434.04	1863.10	3094.49	0.00	1386418.86	3196470.15	40.391976	-104.794644
	10400.00	90.48	89.96	7237.18	3531.49	1863.17	3194.49	0.00	1386419.72	3196570.14	40.391977	-104.794285
	10500.00	90.48	89.96	7236.34	3628.95	1863.25	3294.49	0.00	1386420.58	3196670.13	40.391977	-104.793926
	10600.00	90.48	89.96	7235.50	3726.41	1863.33	3394.48	0.00	1386421.44	3196770.12	40.391977	-104.793567
	10700.00	90.48	89.96	7234.66	3823.86	1863.40	3494.48	0.00	1386422.29	3196870.11	40.391977	-104.793208
	10800.00	90.48	89.96	7233.82	3921.32	1863.48	3594.48	0.00	1386423.15	3196970.10	40.391977	-104.792849
	10900.00	90.48	89.96	7232.98	4018.77	1863.55	3694.47	0.00	1386424.01	3197070.08	40.391978	-104.792490
	11000.00	90.48	89.96	7232.14	4116.23	1863.63	3794.47	0.00	1386424.87	3197170.07	40.391978	-104.792131
	11100.00	90.48	89.96	7231.30	4213.68	1863.70	3894.46	0.00	1386425.73	3197270.06	40.391978	-104.791772
	11200.00	90.48	89.96	7230.46	4311.14	1863.78	3994.46	0.00	1386426.59	3197370.05	40.391978	-104.791413
	11300.00	90.48	89.96	7229.62	4408.59	1863.85	4094.46	0.00	1386427.44	3197470.04	40.391978	-104.791054
	11400.00	90.48	89.96	7228.78	4506.05	1863.93	4194.45	0.00	1386428.30	3197570.03	40.391978	-104.790695
	11500.00	90.48	89.96	7227.94	4603.50	1864.00	4294.45	0.00	1386429.16	3197670.02	40.391978	-104.790336
	11600.00	90.48	89.96	7227.10	4700.96	1864.08	4394.45	0.00	1386430.02	3197770.00	40.391979	-104.789977
	11700.00	90.48	89.96	7226.26	4798.42	1864.15	4494.44	0.00	1386430.88	3197869.99	40.391979	-104.789618
	11800.00	90.48	89.96	7225.42	4895.87	1864.23	4594.44	0.00	1386431.73	3197969.98	40.391979	-104.789259
	11900.00	90.48	89.96	7224.57	4993.33	1864.31	4694.44	0.00	1386432.59	3198069.97	40.391979	-104.788900
	12000.00	90.48	89.96	7223.73	5090.78	1864.38	4794.43	0.00	1386433.45	3198169.96	40.391979	-104.788541
	12100.00	90.48	89.96	7222.89	5188.24	1864.46	4894.43	0.00	1386434.31	3198269.95	40.391979	-104.788182
	12200.00	90.48	89.96	7222.05	5285.69	1864.53	4994.43	0.00	1386435.17	3198369.94	40.391980	-104.787823
	12300.00	90.48	89.96	7221.21	5383.15	1864.61	5094.42	0.00	1386436.03	3198469.92	40.391980	-104.787464
	12400.00	90.48	89.96	7220.37	5480.60	1864.68	5194.42	0.00	1386436.88	3198569.91	40.391980	-104.787105
	12500.00	90.48	89.96	7219.53	5578.06	1864.76	5294.41	0.00	1386437.74	3198669.90	40.391980	-104.786746
	12600.00	90.48	89.96	7218.69	5675.51	1864.83	5394.41	0.00	1386438.60	3198769.89	40.391980	-104.786387
	12700.00	90.48	89.96	7217.85	5772.97	1864.91	5494.41	0.00	1386439.46	3198869.88	40.391980	-104.786028
	12800.00	90.48	89.96	7217.01	5870.43	1864.98	5594.40	0.00	1386440.32	3198969.87	40.391980	-104.785669
	12900.00	90.48	89.96	7216.17	5967.88	1865.06	5694.40	0.00	1386441.18	3199069.86	40.391981	-104.785310
	13000.00	90.48	89.96	7215.33	6065.34	1865.13	5794.40	0.00	1386442.03	3199169.84	40.391981	-104.784951
	13100.00	90.48	89.96	7214.49	6162.79	1865.21	5894.39	0.00	1386442.89	3199269.83	40.391981	-104.784592
	13200.00	90.48	89.96	7213.65	6260.25	1865.29	5994.39	0.00	1386443.75	3199369.82	40.391981	-104.784233
	13300.00	90.48	89.96	7212.81	6357.70	1865.36	6094.39	0.00	1386444.61	3199469.81	40.391981	-104.783874
	13400.00	90.48	89.96	7211.97	6455.16	1865.44	6194.38	0.00	1386445.47	3199569.80	40.391981	-104.783515
	13500.00	90.48	89.96	7211.13	6552.61	1865.51	6294.38	0.00	1386446.32	3199669.79	40.391981	-104.783156
	13600.00	90.48	89.96	7210.29	6650.07	1865.59	6394.38	0.00	1386447.18	3199769.78	40.391982	-104.782797
	13700.00	90.48	89.96	7209.45	6747.52	1865.66	6494.37	0.00	1386448.04	3199869.77	40.391982	-104.782438
	13800.00	90.48	89.96	7208.61	6844.98	1865.74	6594.37	0.00	1386448.90	3199969.75	40.391982	-104.782079
	13900.00	90.48	89.96	7207.77	6942.44	1865.81	6694.37	0.00	1386449.76	3200069.74	40.391982	-104.781720
	14000.00	90.48	89.96	7206.93	7039.89	1865.89	6794.36	0.00	1386450.62	3200169.73	40.391982	-104.781362
	14100.00	90.48	89.96	7206.09	7137.35	1865.96	6894.36	0.00	1386451.47	3200269.72	40.391982	-104.781003
	14200.00	90.48	89.96	7205.25	7234.80	1866.04	6994.35	0.00	1386452.33	3200369.71	40.391982	-104.780644
	14300.00	90.48	89.96	7204.41	7332.26	1866.11	7094.35	0.00	1386453.19	3200469.70	40.391983	-104.780285
	14400.00	90.48	89.96	7203.57	7429.71	1866.19	7194.35	0.00	1386454.05	3200569.69	40.391983	-104.779926
	14500.00	90.48	89.96	7202.72	7527.17	1866.26	7294.34	0.00	1386454.91	3200669.67	40.391983	-104.779567
	14600.00	90.48	89.96	7201.88	7624.62	1866.34	7394.34	0.00	1386455.76	3200769.66	40.391983	-104.779208
	14700.00	90.48	89.96	7201.04	7722.08	1866.42	7494.34	0.00	1386456.62	3200869.65	40.391983	-104.778849
	14800.00	90.48	89.96	7200.20	7819.54	1866.49	7594.33	0.00	1386457.48	3200969.64	40.391983	-104.778490
	14900.00	90.48	89.96	7199.36	7916.99	1866.57	769					

Stugart State 01N R2 mdv 10June20 Anti-Collision Summary Report

Analysis Date-24hr Time: June 17, 2020 - 11:53
Client: PDC Energy
Field: CO, Weld County (NAD 83 NZ) - SRC
Structure: PDC Energy 20-05N-66W (Stugart State 6-20 Pad)
Slot: Stugart State 01N
Well: Stugart State 01N
Borehole: Original Hole
Scan MD Range: 0.00ft - 15300.20ft

Analysis Method: 3D Least Distance
Reference Trajectory: Stugart State 01N R2 mdv 10June20 (Def Plan)
Depth Interval: Every 10.00 Measured Depth (ft)
Rule Set: D&M AntiCollision Standard S002 v5.1/5.2
Min Pts: All local minima indicated.
Version / Patch: 2.10.811.0
Database \ Project: localhost\drilling-project1

Trajectory Error Model: ICSWSA0 3-D 95.000% Confidence 2.7955 sigma

Offset Trajectories Summary

Offset Selection Criteria

Wellhead distance scan: Not performed!
 Selection filters: Definitive Surveys - Definitive Plans - Definitive surveys exclude definitive plans
 - All Non-Def Surveys when no Def-Survey is set in a borehole - All Non-Def Plans when no Def-Plan is set in a borehole

Offset Trajectory	Separation			Allow Dev. (ft)	Sep. Fact.	Controlling Rule	Reference Trajectory		Risk Level			Alert	Status
	Ct-Ct (ft)	MAS (ft)	EOU (ft)				MD (ft)	TVD (ft)	Alert	Minor	Major		

Results highlighted: Sep-Factor separation <= 1.50 ft

Lesser J 21-28D GYRO 0' to 7573' - St (Def Survey)												
6687.63	32.81	6685.81	6654.82	N/A	MAS = 10.00 (m)	0.00	0.00					Fail Major
6687.59	32.81	6685.73	6654.78	155054.88	MAS = 10.00 (m)	4.00	4.00					Surface
188.58	64.97	142.65	123.61	4.75	OSF1.50	12990.00	7215.41	OSF<5.00				MinPt-O-SF
85.22	92.63	20.87	-7.41	1.37	OSF1.50	13100.00	7214.49					Enter Alert
69.68	108.76	-6.33	-40.08	0.91	OSF1.50	13120.00	7214.32		OSF<1.50			Enter Minor
43.05	166.34	-69.16	-123.25	0.34	OSF1.50	13170.00	7213.90			OSF<1.00		Enter Major
43.37	166.79	-68.65	-123.42	0.37	OSF1.50	13180.00	7213.82					MinPts
70.83	118.91	-8.98	-48.08	0.89	OSF1.50	13230.00	7213.40			OSF>1.00		MinPt-O-ADP
96.43	98.39	30.30	-1.96	1.47	OSF1.50	13260.00	7213.15					Exit Major
220.57	69.91	173.43	150.66	4.81	OSF1.50	13390.00	7212.05	OSF>5.00		OSF>1.50		Exit Minor
2126.96	57.36	2088.19	2069.60	57.18	OSF1.50	15300.20	7196.00					Exit Alert
												TD

Lesser J 21-27D GYRO 0' to 7585' - PR (Def Survey)												
6733.43	32.81	6731.61	6700.62	N/A	MAS = 10.00 (m)	0.00	0.00					Fail Major
6733.39	32.81	6731.53	6700.58	168192.43	MAS = 10.00 (m)	4.00	4.00					Surface
6700.21	32.81	6731.13	6700.28	45843.00	MAS = 10.00 (m)	70.00	70.00					MinPt-O-SF
6700.42	32.81	6689.39	6667.40	743.51	MAS = 10.00 (m)	1570.00	1538.71					MinPts
7235.63	32.81	6689.17	6667.61	709.56	MAS = 10.00 (m)	1630.00	1596.51					MINPT-O-EOU
223.07	54.15	7198.99	7181.47	206.50	OSF1.50	6720.00	6499.40					MinPt-CtCt
102.28	75.38	169.98	147.70	4.81	OSF1.50	14230.00	7204.99	OSF<5.00				Enter Alert
86.10	115.85	22.29	-13.57	1.31	OSF1.50	14360.00	7203.90		OSF<1.50			Enter Minor
55.36	132.97	-5.20	-46.87	0.94	OSF1.50	14380.00	7203.73			OSF<1.00		Enter Major
58.13	199.36	-78.89	-144.00	0.33	OSF1.50	14440.00	7203.23					MinPt-O-SF
91.97	201.10	-79.86	-146.97	0.40	OSF1.50	14450.00	7203.14					MinPts
108.65	137.98	-0.55	-48.01	0.99	OSF1.50	14520.00	7202.56			OSF>1.00		Exit Major
259.53	123.14	26.02	-14.49	1.32	OSF1.50	14540.00	7202.39	OSF>5.00		OSF>1.50		Exit Minor
855.38	79.78	205.81	179.75	4.95	OSF1.50	14700.00	7201.04					Exit Alert
	64.75	811.68	790.63	20.28	OSF1.50	15300.20	7196.00					TD

Meyer 7 GYRO 0' to 8146' - PR (Def Survey)												
3858.12	32.81	3856.31	3825.31	N/A	MAS = 10.00 (m)	0.00	0.00					Fail Major
3858.10	32.81	3856.26	3825.25	166192.14	MAS = 10.00 (m)	4.00	4.00					Surface
3843.87	32.81	3836.95	3811.06	752.08	MAS = 10.00 (m)	1020.00	1008.93					MinPt-O-SF
3843.99	32.81	3836.81	3811.18	715.93	MAS = 10.00 (m)	1060.00	1047.46					MinPts
454.165	53.91	4505.18	4487.74	130.19	OSF1.50	6800.00	6576.46					MINPT-O-EOU
193.74	62.86	149.73	130.88	4.97	OSF1.50	11550.00	7227.52	OSF<5.00				Enter Alert
89.45	95.77	23.59	-6.32	1.39	OSF1.50	11670.00	7226.51		OSF<1.50			Enter Minor
71.53	116.96	-8.20	-45.43	0.89	OSF1.50	11700.00	7226.26			OSF<1.00		Enter Major
63.51	133.99	-27.02	-70.48	0.69	OSF1.50	11730.00	7226.00					MinPts
63.81	135.23	-27.31	-71.42	0.69	OSF1.50	11740.00	7225.92					MinPts
78.90	120.66	-2.07	-41.76	0.97	OSF1.50	11780.00	7225.58			OSF>1.00		Exit Major
99.70	105.44	28.88	-5.73	1.42	OSF1.50	11810.00	7225.33					Exit Minor
235.61	72.86	186.51	162.76	4.93	OSF1.50	11960.00	7224.07	OSF>5.00		OSF>1.50		Exit Alert
3567.39	57.45	3528.55	3509.93	95.77	OSF1.50	15300.20	7196.00					TD

Stugart 3-20 Blind 0' to 7580' - PR (Def Survey)												
1124.56	32.81	1122.69	1091.75	21277.74	MAS = 10.00 (m)	0.00	0.00					Fail Major
1124.56	32.81	1122.59	1091.75	7116.18	MAS = 10.00 (m)	4.00	4.00					Surface
540.32	163.71	430.56	376.61	4.99	OSF1.50	2790.00	2713.87	OSF<5.00				WRP
233.67	233.85	77.09	-0.17	1.50	OSF1.50	4010.00	3889.02		OSF<1.50			Enter Alert
167.07	251.71	-1.41	-84.64	0.99	OSF1.50	4330.00	4197.26			OSF<1.00		Enter Minor
123.73	274.48	-59.79	-150.75	0.67	OSF1.50	4750.00	4601.82					Enter Major
124.25	276.81	-60.83	-152.56	0.67	OSF1.50	4790.00	4640.35					MinPt-CtCt
125.24	278.56	-61.01	-153.34	0.67	OSF1.50	4820.00	4669.24					MINPT-O-EOU
126.74	280.36	-60.71	-153.62	0.67	OSF1.50	4850.00	4698.14					MINPT-O-ADP
207.94	311.83	-0.48	-103.89	1.00	OSF1.50	5370.00	5199.03			OSF>1.00		Exit Major
345.82	345.97	114.64	-0.15	1.50	OSF1.50	5950.00	5757.71					Exit Minor
1440.73	434.09	1150.80	1006.64	4.99	OSF1.50	8560.00	7252.64	OSF>5.00				Exit Alert
8008.98	429.91	7721.83	7579.06	28.04	OSF1.50	15300.20	7196.00					TD

Stugart State 02C R2 mdv 10June20 (Def Plan)												
14.90	12.11	13.92	2.79	N/A	MAS = 3.69 (m)	0.00	0.00	CtCt<=15m<15.00				Fail Minor
14.90	12.11	13.92	2.79	N/A	MAS = 3.69 (m)	4.00	4.00					Enter Alert
14.90	12.11	12.99	2.79	14.97	MAS = 3.69 (m)	200.00	200.00					WRP
15.01	12.11	12.91	2.90	12.54	MAS = 3.69 (m)	230.00	230.00					MinPts
25.18	12.11	18.09	13.07	3.99	MAS = 3.69 (m)	970.00	960.76					MINPT-O-EOU
33.08	12.92	24.13	20.16	4.03	OSF1.50	1210.00	1191.94					MinPt-O-SF
66.85	20.78	52.67	46.07	4.99	OSF1.50	2180.00	2126.29	OSF<5.00				Exit Alert
232.04	63.66	189.27	168.36	5.53	OSF1.50	6800.00	6576.46					MinPt-O-SF
290.66	87.99	231.67	202.67	4.99	OSF1.50	8490.00	7253.23	OSF<5.00				Enter Alert
291.19	291.29	96.67	-0.10	1.50	OSF1.50	14670.00	7201.30		OSF<1.50			Enter Minor
291.25	312.94	82.30	-21.69	1.40	OSF1.50	15300.00	7196.00					MinPts
291.25	312.94	82.30	-21.69	1.40	OSF1.50	15300.20	7196.00					TD

Stugart 03N R2 mdv 10June20 (Def Plan)												
												Warning Alert

Offset Trajectory	Separation			Allow Dev. (ft)	Sep. Fact.	Controlling Rule	Reference Trajectory		Risk Level			Alert	Status
	Ct-Ct (ft)	MAS (ft)	EOU (ft)				MD (ft)	TVD (ft)	Alert	Minor	Major		
Stuttgart 04N R2 mdv 10June20 (Def Plan)	30.01	24.20	29.02	5.81	N/A	MAS = 7.38 (m)	0.00	0.00	CtCt<=15m<15.00			Enter Alert	
	30.01	24.20	29.02	5.81	N/A	MAS = 7.38 (m)	4.00	4.00				WRP	
	30.01	24.20	28.09	5.81	31.21	MAS = 7.38 (m)	200.00	200.00				MinPts	
	30.12	24.20	28.01	5.92	26.04	MAS = 7.38 (m)	230.00	230.00	CtCt<=15m>15.00			MINPT-O-EOU	
	40.53	24.20	33.40	16.33	6.43	MAS = 7.38 (m)	970.00	960.76				MinPt-O-SF	
	49.09	24.20	40.75	24.89	6.54	MAS = 7.38 (m)	1130.00	1114.88				Exit Alert	
	395.67	62.22	353.86	333.44	9.67	OSF1.50	6770.00	6547.57	OSF<5.00			MinPt-O-SF	
	442.81	71.77	394.64	371.04	9.36	OSF1.50	7930.00	7257.94				MinPt-CtCt	
	443.28	133.70	353.82	309.58	5.00	OSF1.50	10230.00	7238.61				Enter Alert	
	444.39	313.81	234.86	130.58	2.13	OSF1.50	15300.00	7196.00				MinPts	
444.39	313.80	234.86	130.59	2.13	OSF1.50	15300.20	7196.00	TD					
Stuttgart 04N R2 mdv 10June20 (Def Plan)												Warning Alert	
45.12	32.81	44.13	12.31	N/A	MAS = 10.00 (m)	0.00	0.00	CtCt<=15m<15.00				Enter Alert	
45.12	32.81	44.13	12.31	N/A	MAS = 10.00 (m)	4.00	4.00					WRP	
45.12	32.81	43.20	12.31	47.45	MAS = 10.00 (m)	200.00	200.00					MinPts	
45.22	32.81	43.12	12.41	39.54	MAS = 10.00 (m)	230.00	230.00	CtCt<=15m>15.00				MINPT-O-EOU	
49.16	32.81	44.54	16.36	13.24	MAS = 10.00 (m)	620.00	618.50					Exit Alert	
57.51	32.81	50.45	24.70	9.30	MAS = 10.00 (m)	960.00	951.12					MinPt-O-SF	
567.81	59.98	527.49	507.83	14.41	OSF1.50	6670.00	6451.24	OSF<5.00				MinPt-O-SF	
657.02	197.84	524.80	459.18	5.00	OSF1.50	12290.00	7221.30					Enter Alert	
657.02	226.93	505.41	430.09	4.36	OSF1.50	13100.00	7214.49					MinPt-CtCt	
657.03	307.20	451.91	349.83	3.21	OSF1.50	15300.00	7196.00					MinPts	
657.03	307.20	451.91	349.84	3.21	OSF1.50	15300.20	7196.00					TD	
Stuttgart 05N R2 mdv 10June20 (Def Plan)												Warning Alert	
60.02	32.81	59.03	27.21	N/A	MAS = 10.00 (m)	0.00	0.00	CtCt<=15m<15.00				Surface	
60.02	32.81	59.03	27.21	26572.55	MAS = 10.00 (m)	4.00	4.00					WRP	
60.02	32.81	58.10	27.21	63.26	MAS = 10.00 (m)	200.00	200.00					MinPts	
60.12	32.81	58.02	27.32	52.71	MAS = 10.00 (m)	230.00	230.00	CtCt<=15m>15.00				MINPT-O-EOU	
63.78	32.81	58.67	30.97	15.23	MAS = 10.00 (m)	690.00	687.61					MINPT-O-EOU	
76.36	32.81	69.31	43.56	12.43	MAS = 10.00 (m)	960.00	951.12					MinPt-O-SF	
721.26	57.16	682.82	664.00	19.23	OSF1.50	6500.00	6287.49	OSF<5.00				MinPt-O-SF	
886.97	266.85	708.74	620.12	5.00	OSF1.50	14420.00	7203.40					Enter Alert	
886.53	299.03	686.85	587.50	4.46	OSF1.50	15300.00	7196.00					MinPts	
886.53	299.03	686.85	587.50	4.46	OSF1.50	15300.20	7196.00					TD	
Greeley 27-20 GYRO 0' to 7712' - PR (Def Survey)												Warning Alert	
1682.48	32.81	1680.67	1649.67	N/A	MAS = 10.00 (m)	0.00	0.00	CtCt<=15m<15.00				Surface	
1682.45	32.81	1680.60	1649.64	49393.98	MAS = 10.00 (m)	4.00	4.00					MinPt-O-SF	
1682.10	32.81	1679.57	1649.29	2346.27	MAS = 10.00 (m)	190.00	190.00					MinPts	
1554.15	32.81	1540.75	1521.35	131.56	MAS = 10.00 (m)	2230.00	2174.45	CtCt<=15m>15.00				MinPts	
1554.21	32.81	1540.71	1521.40	130.57	MAS = 10.00 (m)	2260.00	2203.35					MINPT-O-EOU	
212.76	66.85	166.86	145.91	4.98	OSF1.50	8880.00	7249.95					Enter Alert	
157.21	77.30	104.61	79.91	3.12	OSF1.50	9020.00	7248.78	OSF<5.00				MinPt-CtCt	
157.31	77.69	104.49	79.62	3.10	OSF1.50	9030.00	7248.69					MinPts	
236.39	72.21	187.72	164.18	4.99	OSF1.50	9200.00	7247.27					OSF<5.00	
6278.55	61.54	6236.99	6217.01	157.10	OSF1.50	15300.20	7196.00					TD	
Stuttgart 6-20 Blind 0' to 7610' - PR (Def Survey)												Warning Alert	
245.31	32.81	243.50	212.50	N/A	MAS = 10.00 (m)	0.00	0.00	CtCt<=15m<15.00				Surface	
245.13	32.81	243.16	212.32	1489.64	MAS = 10.00 (m)	4.00	4.00					MinPt-O-SF	
181.73	56.24	143.63	125.49	4.96	OSF1.50	970.00	960.76					Enter Alert	
163.30	73.31	113.82	89.98	3.39	OSF1.50	1270.00	1249.74	OSF<5.00				MinPt-CtCt	
165.20	78.61	112.19	86.59	3.19	OSF1.50	1360.00	1336.43					MINPT-O-EOU	
167.76	81.59	112.76	86.17	3.12	OSF1.50	1410.00	1384.59					MinPt-O-ADP	
183.68	91.81	121.87	91.87	3.03	OSF1.50	1580.00	1548.34	OSF<5.00				MinPt-O-SF	
823.10	248.06	657.19	575.04	5.00	OSF1.50	4270.00	4139.46					Exit Alert	
8428.40	430.05	8141.17	7998.35	29.50	OSF1.50	15300.20	7196.00					TD	
Meyer 6 GYRO 0' to 8410' - AB (Def Survey)												Warning Alert	
3841.82	32.81	3840.01	3809.01	N/A	MAS = 10.00 (m)	0.00	0.00	CtCt<=15m<15.00				Surface	
3841.80	32.81	3839.96	3808.99	162483.17	MAS = 10.00 (m)	4.00	4.00					MinPt-O-SF	
3841.53	32.81	3839.18	3808.72	7217.50	MAS = 10.00 (m)	150.00	150.00					MinPts	
3841.99	32.81	3839.02	3809.18	3306.88	MAS = 10.00 (m)	280.00	279.99	CtCt<=15m>15.00				MINPT-O-EOU	
3841.59	32.81	3834.67	3808.79	751.41	MAS = 10.00 (m)	970.00	960.76					MinPts	
3841.76	32.81	3834.51	3808.95	705.95	MAS = 10.00 (m)	1020.00	1008.93					MINPT-O-EOU	
5254.28	55.84	5216.51	5198.43	145.26	OSF1.50	6840.00	6614.96	OSF<5.00				MinPts	
479.20	145.90	381.30	333.31	4.97	OSF1.50	12270.00	7221.47					Enter Alert	
435.85	156.03	331.30	279.82	4.22	OSF1.50	12460.00	7219.87					MinPt-O-SF	
435.76	155.97	331.23	279.76	4.22	OSF1.50	12470.00	7219.78	OSF<5.00				MinPts	
471.69	144.54	374.79	327.15	4.93	OSF1.50	12650.00	7218.27					Exit Alert	
2864.13	63.19	2821.46	2800.93	69.72	OSF1.50	15300.20	7196.00					TD	
Hayes 1-20 Blind 0' to 7516' - PR (Def Survey)												Warning Alert	
3000.47	32.81	2998.66	2967.66	N/A	MAS = 10.00 (m)	0.00	0.00	CtCt<=15m<15.00				Surface	
3000.46	32.81	2998.64	2967.65	598770.79	MAS = 10.00 (m)	4.00	4.00					WRP	
2694.59	317.25	2482.55	2377.34	12.80	OSF1.50	5500.00	5324.25					MinPt-CtCt	
1439.26	434.28	1148.93	1004.98	4.99	OSF1.50	8560.00	7252.64	OSF<5.00				Enter Alert	
535.48	440.16	241.51	95.32	1.83	OSF1.50	9900.00	7241.38					MinPts	
1437.42	432.52	1148.54	1004.90	5.00	OSF1.50	11230.00	7230.21					Exit Alert	
5430.48	429.38	5143.69	5001.10	19.04	OSF1.50	15300.20	7196.00					TD	
Lessor J 21-17 Blind 0' to 7578' - SI (Def Survey)												Warning Alert	
6889.36	32.81	6887.55	6856.55	N/A	MAS = 10.00 (m)	0.00	0.00	CtCt<=15m<15.00				Surface	
6889.32	32.81	6887.46	6856.51	156005.02	MAS = 10.00 (m)	4.00	4.00					MinPt-O-SF	
6770.12	303.65	6567.15	6466.46	33.61	OSF1.50	5330.00	5160.50					MinPt-CtCt	
1440.45	437.00	1147.14	1003.46	4.99	OSF1.50	12650.00	7218.27	OSF<5.00				Enter Alert	
572.73	464.05	262.83	108.68	1.85	OSF1.50	13970.00	7207.18					MinPts	
1428.09	432.09	1139.49	995.99	4.97	OSF1.50	15280.00	7196.17					OSF<5.00	
1446.61	431.92	1158.13	1014.69	5.04	OSF1.50	15300.20	7196.00					TD	
Lessor J 21-8 Blind 0' to 7838' - PR (Def Survey)												Warning Alert	
6905.45	32.81	6903.63	6872.64	N/A	MAS = 10.00 (m)	0.00	0.00	CtCt<=15m<15.00				Surface	
6905.41	32.81	6903.55	6872.60	156734.47	MAS = 10.00 (m)	4.00	4.00					MinPt-O-SF	
6797.92	301.92	6586.11	6486.01	33.90	OSF1.50	5300.00	5131.60					MinPt-CtCt	
1441.52	437.14	1148.12	1004.39	4.99	OSF1.50	12670.00	7218.10	OSF<5.00				Enter Alert	
580.39	464.24	270.37	116.17	1.88	OSF1.50	13990.00	7207.01					MinPts	
1433.34	432.27	1144.63	1001.07	4.99	OSF1.50	15300.20	7196.00					TD	

Offset Trajectory	Separation			Allow Dev. (ft)	Sep. Fact.	Controlling Rule	Reference Trajectory		Risk Level			Alert	Status
	Ct-Ct (ft)	MAS (ft)	EOU (ft)				MD (ft)	TVD (ft)	Alert	Minor	Major		
Lesser PM J 21-2 Blind 0' to 7507' - PR (Def Survey)													
	6836.19	32.81	6834.38	6803.38	N/A	MAS = 10.00 (m)	0.00	0.00					Warning Alert
	6836.15	32.81	6834.30	6803.34	164035.84	MAS = 10.00 (m)	4.00	4.00					Surface
	6720.47	298.70	6520.80	6421.77	33.92	OSF1.50	5240.00	5073.81					MinPt-O-SF
	1441.28	437.48	1147.68	1003.80	4.99	OSF1.50	12610.00	7218.61			OSF<5.00		MinPt-CiCt
	596.39	463.80	286.65	132.59	1.93	OSF1.50	13920.00	7207.60					Enter Alert
	1437.37	432.82	1148.29	1004.55	4.99	OSF1.50	15230.00	7196.59			OSF>5.00		MinPts
	1501.52	432.22	1212.84	1069.30	5.22	OSF1.50	15300.20	7196.00					Exit Alert
													TD
Hayes 2-20 Blind 0' to 7627' - PR (Def Survey)													
	1857.66	32.81	1855.85	1824.85	N/A	MAS = 10.00 (m)	0.00	0.00					Warning Alert
	1857.65	32.81	1855.83	1824.84	198798.98	MAS = 10.00 (m)	4.00	4.00					Surface
	1402.90	295.27	1205.52	1107.63	7.16	OSF1.50	5120.00	4958.22					WRP
	1417.68	339.23	1190.99	1078.45	6.29	OSF1.50	5880.00	5690.28					MinPt-CiCt
	1436.51	361.83	1194.76	1074.68	5.97	OSF1.50	6270.00	6065.94					MINPT-O-EOU
	1381.42	416.79	1103.03	964.63	4.99	OSF1.50	7250.00	6980.34			OSF<5.00		MinPt-O-ADP
	640.26	436.70	348.60	203.57	2.20	OSF1.50	8600.00	7252.31					Enter Alert
	640.27	436.70	348.60	203.57	2.20	OSF1.50	8610.00	7252.22					MinPts
	1436.11	432.96	1146.93	1003.15	4.99	OSF1.50	9890.00	7241.47			OSF>5.00		MinPt-O-SF
	6726.04	429.34	6439.28	6296.70	23.58	OSF1.50	15300.20	7196.00					Exit Alert
													TD
Lesser PM J 21-1 Blind 0' to 7510' - PR (Def Survey)													
	8026.18	32.81	8024.37	7993.37	N/A	MAS = 10.00 (m)	0.00	0.00					Warning Alert
	8026.15	32.81	8024.30	7993.34	206296.53	MAS = 10.00 (m)	4.00	4.00					Surface
	7943.68	275.82	7759.24	7667.84	43.44	OSF1.50	4850.00	4698.14					MinPt-O-SF
	1454.49	442.25	1157.46	1012.24	4.99	OSF1.50	13870.00	7208.02			OSF<5.00		MinPt-CiCt
	698.96	476.19	380.97	222.78	2.20	OSF1.50	15150.00	7197.26					Enter Alert
	715.84	474.33	399.09	241.52	2.27	OSF1.50	15300.20	7196.00					MinPts
													TD
Lesser 1 Blind 0' to 7846' - AB (Def Survey)													
	7616.17	32.81	7614.36	7583.36	N/A	MAS = 10.00 (m)	0.00	0.00					Warning Alert
	7616.13	32.81	7614.27	7583.32	172626.93	MAS = 10.00 (m)	4.00	4.00					Surface
	7552.19	240.30	7391.42	7311.85	47.45	OSF1.50	4240.00	4110.57					MinPt-O-SF
	1465.47	444.59	1167.19	1020.88	4.99	OSF1.50	13570.00	7210.54			OSF<5.00		MinPt-CiCt
	863.09	471.61	548.15	391.48	2.75	OSF1.50	14750.00	7200.62					Enter Alert
	863.10	471.65	548.13	391.45	2.75	OSF1.50	14760.00	7200.54					MinPt-CiCt
	1021.17	460.48	713.65	560.69	3.33	OSF1.50	15300.20	7196.00					MinPts
													TD
Greeley 21-20 Blind 0' to 7619' - PR (Def Survey)													
	1642.01	32.81	1640.20	1609.20	N/A	MAS = 10.00 (m)	0.00	0.00					Warning Alert
	1641.97	32.81	1640.12	1609.16	42373.95	MAS = 10.00 (m)	4.00	4.00					Surface
	1353.64	232.90	1197.84	1120.74	8.77	OSF1.50	4050.00	3927.55					MinPt-O-SF
	1367.91	275.07	1183.99	1092.84	7.49	OSF1.50	4780.00	4630.72					MinPt-CiCt
	1386.30	297.08	1187.72	1089.22	7.03	OSF1.50	5160.00	4996.75					MINPT-O-EOU
	1408.29	423.85	1125.19	984.45	5.00	OSF1.50	7420.00	7098.86			OSF<5.00		MinPt-O-ADP
	928.76	436.03	637.54	492.73	3.20	OSF1.50	8560.00	7252.64					Enter Alert
	1435.20	433.80	1145.46	1001.40	4.98	OSF1.50	9650.00	7243.48			OSF>5.00		MinPts
	6807.82	428.99	6521.29	6378.83	23.89	OSF1.50	15300.20	7196.00					Exit Alert
													TD
Stugart 06N R2 mdv 10June20 (Def Plan)													
	75.13	32.81	74.14	42.32	N/A	MAS = 10.00 (m)	0.00	0.00					Pass
	75.13	32.81	74.14	42.32	33372.45	MAS = 10.00 (m)	4.00	4.00					Surface
	75.13	32.81	73.21	42.32	79.45	MAS = 10.00 (m)	200.00	200.00					WRP
	75.23	32.81	73.13	42.42	66.17	MAS = 10.00 (m)	230.00	230.00					MinPts
	77.84	32.81	73.35	45.03	21.89	MAS = 10.00 (m)	600.00	598.70					MINPT-O-EOU
	98.73	32.81	91.78	65.99	16.39	MAS = 10.00 (m)	950.00	941.46					MINPT-O-EOU
	967.41	58.14	928.32	909.27	25.36	OSF1.50	6700.00	6480.14					MinPt-O-SF
	1095.76	66.56	1051.05	1029.19	25.04	OSF1.50	7940.00	7257.85					MinPt-O-SF
	1096.74	308.93	890.46	787.82	5.34	OSF1.50	15300.20	7196.00					MinPt-CiCt
													MinPts
Stugart 07N R2 mdv 10June20 (Def Plan)													
	90.03	32.81	89.04	57.22	N/A	MAS = 10.00 (m)	0.00	0.00					Pass
	90.03	32.81	89.04	57.22	40080.35	MAS = 10.00 (m)	4.00	4.00					Surface
	90.03	32.81	88.11	57.22	95.42	MAS = 10.00 (m)	200.00	200.00					WRP
	90.13	32.81	88.03	57.33	79.45	MAS = 10.00 (m)	230.00	230.00					MinPts
	91.94	32.81	87.97	59.13	30.50	MAS = 10.00 (m)	520.00	519.33					MINPT-O-EOU
	122.58	32.81	115.66	89.77	20.49	MAS = 10.00 (m)	950.00	941.46					MINPT-O-EOU
	1149.15	56.75	1110.99	1092.40	30.88	OSF1.50	6650.00	6431.98					MinPt-O-SF
	1314.06	306.45	1109.43	1007.61	6.45	OSF1.50	15290.00	7196.00					MinPt-O-SF
	1314.06	306.75	1109.23	1007.31	6.44	OSF1.50	15300.20	7196.00					MinPt-CiCt
													MinPts
Stugart 13NA R2 mdv 10June20 (Def Plan)													
	99.99	32.81	99.01	67.18	N/A	MAS = 10.00 (m)	0.00	0.00					Pass
	99.99	32.81	99.01	67.18	N/A	MAS = 10.00 (m)	4.00	4.00					Surface
	99.99	32.81	98.08	67.18	106.46	MAS = 10.00 (m)	200.00	200.00					WRP
	100.04	32.81	98.00	67.23	93.81	MAS = 10.00 (m)	220.00	220.00					MinPts
	207.62	32.81	202.36	174.81	48.29	MAS = 10.00 (m)	860.00	854.18					MINPT-O-EOU
	2387.58	54.84	2350.70	2332.75	66.48	OSF1.50	6791.44	6568.21					MinPt-O-SF
	2641.40	303.73	2438.59	2337.67	13.08	OSF1.50	15300.00	7196.00					MinPt-O-SF
	2641.40	303.73	2438.58	2337.67	13.08	OSF1.50	15300.20	7196.00					MinPt-CiCt
													MinPts
Stugart 14N R2 mdv 10June20 (Def Plan)													
	101.25	32.81	100.26	68.44	N/A	MAS = 10.00 (m)	0.00	0.00					Pass
	101.25	32.81	100.26	68.44	N/A	MAS = 10.00 (m)	4.00	4.00					Surface
	101.25	32.81	99.33	68.44	107.81	MAS = 10.00 (m)	200.00	200.00					WRP
	101.30	32.81	99.26	68.49	94.99	MAS = 10.00 (m)	220.00	220.00					MinPts
	194.22	32.81	189.44	161.41	50.89	MAS = 10.00 (m)	780.00	776.05					MINPT-O-EOU
	2555.27	54.79	2518.42	2500.48	71.21	OSF1.50	6791.44	6568.21					MinPt-O-SF
	2858.25	304.94	2654.63	2553.32	14.10	OSF1.50	15290.00	7196.00					MinPt-O-SF
	2858.26	305.13	2654.51	2553.12	14.09	OSF1.50	15300.20	7196.00					MinPt-CiCt
													MinPts
Stugart 15N R2 mdv 10June20 (Def Plan)													
	104.51	32.81	103.52	71.70	N/A	MAS = 10.00 (m)	0.00	0.00					Pass
	104.51	32.81	103.52	71.70	N/A	MAS = 10.00 (m)	4.00	4.00					Surface
	104.51	32.81	102.59	71.70	111.32	MAS = 10.00 (m)	200.00	200.00					WRP
	104.57	32.81	102.53	71.76	98.07	MAS = 10.00 (m)	220.00	220.00					MinPts
													MINPT-O-EOU

Offset Trajectory	Separation				Sep. Fact.	Controlling Rule	Reference Trajectory		Risk Level			Alert	Status
	Ct-Ct (ft)	MAS (ft)	EOU (ft)	Allow Dev. (ft)			MD (ft)	TVD (ft)	Alert	Minor	Major		
	193.00	32.81	188.38	160.19	52.78	MAS = 10.00 (m)	750.00	746.63				MinPt-O-SF	
	2745.95	54.80	2709.08	2691.15	76.51	OSF1.50	6791.44	6568.21				MinPt-O-SF	
	3076.97	304.91	2873.37	2772.06	15.16	OSF1.50	15290.00	7196.09				MinPt-CiCt	
	3076.97	305.10	2873.25	2771.69	15.17	OSF1.50	15300.20	7196.00				MinPts	
Stugart 08N R2 mdv 10June20 (Def Plan)													
	105.13	32.81	104.15	72.33	N/A	MAS = 10.00 (m)	0.00	0.00				Surface	
	105.13	32.81	104.15	72.33	46880.25	MAS = 10.00 (m)	4.00	4.00				WRP	
	105.13	32.81	103.22	72.33	111.61	MAS = 10.00 (m)	200.00	200.00				MinPts	
	105.24	32.81	103.13	72.43	92.92	MAS = 10.00 (m)	230.00	230.00				MINPT-O-EOU	
	106.47	32.81	103.03	73.66	42.94	MAS = 10.00 (m)	440.00	439.72				MINPT-O-EOU	
	151.35	32.81	144.40	118.54	25.20	MAS = 10.00 (m)	960.00	951.12				MinPt-O-SF	
	1367.94	56.88	1329.69	1311.05	36.68	OSF1.50	6740.00	6518.67				MinPt-O-SF	
	1533.43	65.86	1489.19	1467.57	35.43	OSF1.50	7950.00	7257.77				MinPt-CiCt	
	1533.79	308.39	1327.86	1225.40	7.48	OSF1.50	15300.20	7196.00				MinPts	
Stugart 16N R2 mdv 10June20 (Def Plan)													
	109.86	32.81	108.87	77.05	N/A	MAS = 10.00 (m)	0.00	0.00				Surface	
	109.86	32.81	108.87	77.05	N/A	MAS = 10.00 (m)	4.00	4.00				WRP	
	109.86	32.81	107.94	77.05	117.07	MAS = 10.00 (m)	200.00	200.00				MinPts	
	109.92	32.81	107.88	77.12	103.13	MAS = 10.00 (m)	220.00	220.00				MINPT-O-EOU	
	204.07	32.81	199.39	171.27	54.81	MAS = 10.00 (m)	760.00	756.44				MinPt-O-SF	
	2913.06	54.85	2876.16	2858.21	81.09	OSF1.50	6791.44	6568.21				MinPt-O-SF	
	3296.97	305.29	3093.11	2991.68	16.25	OSF1.50	15290.00	7196.09				MinPt-CiCt	
	3296.97	305.48	3092.99	2991.50	16.24	OSF1.50	15300.20	7196.00				MinPts	
Stugart 17C R2 mdv 10June20 (Def Plan)													
	116.82	32.81	115.83	84.01	N/A	MAS = 10.00 (m)	0.00	0.00				Surface	
	116.82	32.81	115.83	84.01	52139.69	MAS = 10.00 (m)	4.00	4.00				WRP	
	116.82	32.81	114.90	84.01	124.14	MAS = 10.00 (m)	200.00	200.00				MinPts	
	116.89	32.81	114.84	84.08	109.39	MAS = 10.00 (m)	220.00	220.00				MINPT-O-EOU	
	219.73	32.81	214.91	186.92	57.06	MAS = 10.00 (m)	780.00	776.05				MinPt-O-SF	
	3067.41	54.99	3030.43	3012.43	85.18	OSF1.50	6800.00	6576.46				MinPt-O-SF	
	3472.66	60.50	3432.00	3412.16	87.50	OSF1.50	7960.00	7257.69				MinPt-O-SF	
	3489.20	60.74	3448.38	3428.46	87.56	OSF1.50	8040.00	7257.01				MinPt-O-SF	
	3512.33	61.12	3471.26	3451.21	87.58	OSF1.50	8140.00	7256.17				MinPt-O-SF	
	3520.32	305.72	3316.17	3214.60	17.32	OSF1.50	15290.00	7196.09				MinPt-CiCt	
	3520.33	305.91	3316.06	3214.42	17.31	OSF1.50	15300.20	7196.00				MinPts	
Stugart 09C R2 mdv 10June20 (Def Plan)													
	119.99	32.81	119.01	87.19	N/A	MAS = 10.00 (m)	0.00	0.00				Surface	
	119.99	32.81	119.01	87.19	53569.02	MAS = 10.00 (m)	4.00	4.00				WRP	
	119.99	32.81	118.08	87.19	127.54	MAS = 10.00 (m)	200.00	200.00				MinPts	
	120.10	32.81	117.99	87.29	106.16	MAS = 10.00 (m)	230.00	230.00				MINPT-O-EOU	
	120.93	32.81	118.03	88.12	62.52	MAS = 10.00 (m)	360.00	359.92				MINPT-O-EOU	
	188.97	32.81	181.82	156.17	30.49	MAS = 10.00 (m)	1000.00	989.66				MinPt-O-SF	
	1580.39	56.73	1542.24	1523.66	42.50	OSF1.50	6791.44	6568.21				MinPt-O-SF	
	1759.92	311.52	1551.91	1448.40	8.59	OSF1.50	15300.20	7196.00				MinPts	
Stugart 18N R2 mdv 10June20 (Def Plan)													
	124.86	32.81	123.88	92.05	N/A	MAS = 10.00 (m)	0.00	0.00				Surface	
	124.86	32.81	123.87	92.05	55759.69	MAS = 10.00 (m)	4.00	4.00				WRP	
	124.86	32.81	122.94	92.05	132.75	MAS = 10.00 (m)	200.00	200.00				MinPts	
	124.93	32.81	122.88	92.12	116.97	MAS = 10.00 (m)	220.00	220.00				MINPT-O-EOU	
	235.81	32.81	230.87	203.01	59.39	MAS = 10.00 (m)	800.00	795.62				MinPt-O-SF	
	3265.30	55.07	3228.26	3210.23	90.54	OSF1.50	6800.00	6576.46				MinPt-O-SF	
	3690.77	60.48	3650.12	3630.29	93.02	OSF1.50	7970.00	7257.60				MinPt-O-SF	
	3706.45	60.72	3665.65	3645.74	93.05	OSF1.50	8050.00	7256.93				MinPt-O-SF	
	3733.07	61.16	3691.97	3671.91	93.03	OSF1.50	8170.00	7255.92				MinPt-O-SF	
	3733.94	305.49	3529.96	3428.45	18.39	OSF1.50	15290.00	7196.09				MinPt-CiCt	
	3733.95	305.68	3529.84	3428.27	18.38	OSF1.50	15300.20	7196.00				MinPts	
Stugart 19N R2 mdv 10June20 (Def Plan)													
	134.44	32.81	133.46	101.63	N/A	MAS = 10.00 (m)	0.00	0.00				Surface	
	134.44	32.81	133.45	101.63	60071.96	MAS = 10.00 (m)	4.00	4.00				WRP	
	134.44	32.81	132.52	101.63	143.02	MAS = 10.00 (m)	200.00	200.00				MinPts	
	134.51	32.81	132.47	101.70	126.01	MAS = 10.00 (m)	220.00	220.00				MINPT-O-EOU	
	253.08	32.81	248.01	220.27	61.79	MAS = 10.00 (m)	820.00	815.17				MinPt-O-SF	
	3412.61	55.10	3375.55	3357.51	94.59	OSF1.50	6800.00	6576.46				MinPt-O-SF	
	3852.25	60.43	3811.63	3791.82	97.18	OSF1.50	7970.00	7257.60				MinPt-O-SF	
	3869.21	60.68	3828.42	3808.52	97.19	OSF1.50	8060.00	7256.85				MinPt-O-SF	
	3897.24	61.15	3856.15	3836.09	97.14	OSF1.50	8190.00	7255.75				MinPt-O-SF	
	3953.47	305.85	3749.23	3647.61	19.45	OSF1.50	15290.00	7196.09				MinPt-CiCt	
	3953.47	306.04	3749.12	3647.43	19.43	OSF1.50	15300.20	7196.00				MinPts	
Stugart 10N R2 mdv 10June20 (Def Plan)													
	134.90	32.81	133.91	102.09	N/A	MAS = 10.00 (m)	0.00	0.00				Surface	
	134.90	32.81	133.91	102.09	60276.77	MAS = 10.00 (m)	4.00	4.00				WRP	
	134.90	32.81	132.98	102.09	143.51	MAS = 10.00 (m)	200.00	200.00				MinPts	
	135.00	32.81	132.90	102.19	119.44	MAS = 10.00 (m)	230.00	230.00				MINPT-O-EOU	
	391.97	32.81	380.76	359.16	38.26	MAS = 10.00 (m)	1670.00	1635.04				MinPt-O-SF	
	405.14	32.81	393.60	372.34	38.26	MAS = 10.00 (m)	1720.00	1683.20				MinPt-O-SF	
	1775.76	55.94	1738.14	1719.82	48.44	OSF1.50	6791.44	6568.21				MinPt-O-SF	
	1971.08	309.91	1764.15	1661.17	9.57	OSF1.50	15290.00	7196.09				MinPt-CiCt	
	1971.09	310.21	1763.95	1660.88	9.56	OSF1.50	15300.20	7196.00				MinPts	
Stugart 20N R2 mdv 10June20 (Def Plan)													
	144.94	32.81	143.96	112.13	N/A	MAS = 10.00 (m)	0.00	0.00				Surface	
	144.94	32.81	143.95	112.13	64798.30	MAS = 10.00 (m)	4.00	4.00				WRP	
	144.94	32.81	143.02	112.13	154.27	MAS = 10.00 (m)	200.00	200.00				MinPts	
	145.01	32.81	142.97	112.20	135.92	MAS = 10.00 (m)	220.00	220.00				MINPT-O-EOU	
	279.13	32.81	273.82	246.33	64.21	MAS = 10.00 (m)	860.00	854.18				MinPt-O-SF	
	3579.24	55.09	3542.19	3524.15	99.21	OSF1.50	6800.00	6576.46				MinPt-O-SF	
	4035.94	60.33	3995.39	3975.61	101.99	OSF1.50	7970.00	7257.60				MinPt-O-SF	
	4053.98	60.59	4013.26	3993.39	102.00	OSF1.50	8070.00	7256.76				MinPt-O-SF	
	4171.97	306.04	3967.61	3865.92	20.51	OSF1.50	15290.00	7196.09				MinPt-CiCt	
	4171.97	306.24	3967.49	3865.74	20.50	OSF1.50	15300.20	7196.00				MinPts	

Offset Trajectory	Separation			Allow Dev. (ft)	Sep. Fact.	Controlling Rule	Reference Trajectory		Risk Level			Alert	Status
	Ct-Ct (ft)	MAS (ft)	EOU (ft)				MD (ft)	TVD (ft)	Alert	Minor	Major		
Stugart 11N R2 mdv 10June20 (Def Plan)													Pass
	150.00	32.81	149.02	117.19	N/A	MAS = 10.00 (m)	0.00	0.00					Surface
	150.00	32.81	149.02	117.19	67076.75	MAS = 10.00 (m)	4.00	4.00					WRP
	150.00	32.81	148.00	117.19	159.70	MAS = 10.00 (m)	200.00	200.00					MinPts
	150.11	32.81	148.00	117.30	132.91	MAS = 10.00 (m)	230.00	230.00					MINPT-O-EOU
	480.34	32.81	468.68	447.59	44.89	MAS = 10.00 (m)	1800.00	1760.26					MinPt-O-SF
	1971.99	55.39	1934.73	1916.60	54.34	OSF1.50	6791.44	6568.21					MinPt-O-SF
	2190.71	308.81	1964.51	1881.90	10.67	OSF1.50	15300.20	7196.00					MinPts
Stugart 21NA R2 mdv 10June20 (Def Plan)													Pass
	156.16	32.81	155.18	123.35	N/A	MAS = 10.00 (m)	0.00	0.00					Surface
	156.16	32.81	155.18	123.35	69848.99	MAS = 10.00 (m)	4.00	4.00					WRP
	156.23	32.81	154.24	123.35	166.30	MAS = 10.00 (m)	200.00	200.00					MinPts
	156.23	32.81	154.19	123.42	146.51	MAS = 10.00 (m)	220.00	220.00					MINPT-O-EOU
	302.12	32.81	296.61	269.31	66.61	MAS = 10.00 (m)	890.00	883.35					MinPt-O-SF
	3757.64	54.97	3720.67	3702.67	104.38	OSF1.50	6800.00	6576.46					MinPt-O-SF
	4233.29	60.12	4192.88	4173.17	107.36	OSF1.50	7970.00	7257.60					MinPt-O-SF
	4252.22	60.38	4211.64	4191.84	107.36	OSF1.50	8080.00	7256.68					MinPt-O-SF
	4392.44	306.18	4187.99	4086.25	21.58	OSF1.50	15290.00	7196.09					MinPt-CiCt
	4392.45	306.38	4187.87	4086.07	21.57	OSF1.50	15300.20	7196.00					MinPts
Stugart 12N R2 mdv 10June20 (Def Plan)													Pass
	164.91	32.81	163.92	132.10	N/A	MAS = 10.00 (m)	0.00	0.00					Surface
	164.91	32.81	163.92	132.10	73784.55	MAS = 10.00 (m)	4.00	4.00					WRP
	164.91	32.81	162.99	132.10	175.67	MAS = 10.00 (m)	200.00	200.00					MinPts
	165.01	32.81	162.91	132.20	146.19	MAS = 10.00 (m)	230.00	230.00					MINPT-O-EOU
	532.65	32.81	521.06	499.84	50.19	MAS = 10.00 (m)	1800.00	1760.26					MinPt-O-SF
	2169.69	55.08	2132.64	2114.60	60.13	OSF1.50	6791.44	6568.21					MinPt-O-SF
	2409.13	306.80	2204.27	2102.33	11.81	OSF1.50	15290.00	7196.09					MinPt-CiCt
	2409.13	307.08	2204.08	2102.08	11.80	OSF1.50	15300.20	7196.00					MinPts
Stugart 22N R2 mdv 10June20 (Def Plan)													Pass
	168.01	32.81	167.02	135.20	N/A	MAS = 10.00 (m)	0.00	0.00					Surface
	168.01	32.81	167.02	135.20	75181.29	MAS = 10.00 (m)	4.00	4.00					WRP
	168.01	32.81	166.09	135.20	178.99	MAS = 10.00 (m)	200.00	200.00					MinPts
	168.08	32.81	166.03	135.27	157.70	MAS = 10.00 (m)	220.00	220.00					MINPT-O-EOU
	330.35	32.81	324.59	297.54	68.97	MAS = 10.00 (m)	930.00	922.13					MinPt-O-SF
	362.99	32.81	356.77	330.18	69.17	MAS = 10.00 (m)	1000.00	989.66					MinPt-O-SF
	3848.65	54.84	3811.75	3793.80	107.16	OSF1.50	6800.00	6576.46					MinPt-O-SF
	4334.98	59.94	4294.69	4275.03	110.26	OSF1.50	7970.00	7257.60					MinPt-O-SF
	4351.78	60.17	4311.34	4291.61	110.26	OSF1.50	8070.00	7256.76					MinPt-O-SF
	4610.39	306.76	4405.55	4303.62	22.61	OSF1.50	15290.00	7196.09					MinPt-CiCt
	4610.40	306.96	4405.43	4303.44	22.60	OSF1.50	15300.20	7196.00					MinPts
Stugart 23N R2 mdv 10June20 (Def Plan)													Pass
	180.28	32.81	179.29	147.47	N/A	MAS = 10.00 (m)	0.00	0.00					Surface
	180.28	32.81	179.29	147.47	80703.71	MAS = 10.00 (m)	4.00	4.00					WRP
	180.28	32.81	178.36	147.47	192.14	MAS = 10.00 (m)	200.00	200.00					MinPts
	180.34	32.81	178.30	147.54	169.28	MAS = 10.00 (m)	220.00	220.00					MINPT-O-EOU
	350.34	32.81	344.46	317.53	71.29	MAS = 10.00 (m)	950.00	941.46					MinPt-O-SF
	373.81	32.81	367.59	341.00	71.29	MAS = 10.00 (m)	1000.00	989.66					MinPt-O-SF
	3994.81	54.54	3958.12	3940.27	111.85	OSF1.50	6800.00	6576.46					MinPt-O-SF
	4496.76	59.55	4456.74	4437.22	115.16	OSF1.50	7960.00	7257.69					MinPt-O-SF
	4516.19	59.80	4476.00	4456.39	115.16	OSF1.50	8080.00	7256.68					MinPt-O-SF
	4829.02	307.10	4623.96	4521.92	23.66	OSF1.50	15290.00	7196.09					MinPt-CiCt
	4829.03	307.30	4623.84	4521.73	23.64	OSF1.50	15300.20	7196.00					MinPts
Stugart 24N R2 mdv 10June20 (Def Plan)													Pass
	192.99	32.81	192.01	160.19	N/A	MAS = 10.00 (m)	0.00	0.00					Surface
	192.99	32.81	192.01	160.19	86427.95	MAS = 10.00 (m)	4.00	4.00					WRP
	192.99	32.81	191.08	160.19	205.77	MAS = 10.00 (m)	200.00	200.00					MinPts
	193.06	32.81	191.02	160.25	181.28	MAS = 10.00 (m)	220.00	220.00					MINPT-O-EOU
	384.92	32.81	378.71	352.11	73.44	MAS = 10.00 (m)	1000.00	989.66					MinPt-O-SF
	4102.52	54.21	4066.05	4048.31	115.59	OSF1.50	6800.00	6576.46					MinPt-O-SF
	4617.76	59.16	4577.99	4558.60	119.05	OSF1.50	7960.00	7257.69					MinPt-O-SF
	4636.74	59.39	4596.82	4577.35	119.05	OSF1.50	8080.00	7256.68					MinPt-O-SF
	5048.62	307.45	4843.33	4741.17	24.71	OSF1.50	15290.00	7196.09					MinPt-CiCt
	5048.63	307.65	4843.21	4740.99	24.69	OSF1.50	15300.20	7196.00					MinPts
Stugart 22-20 MWD 0' to 7736' - PR (Def Survey)													Pass
	266.33	32.81	264.52	233.52	N/A	MAS = 10.00 (m)	0.00	0.00					Surface
	266.33	32.81	264.52	233.52	N/A	MAS = 10.00 (m)	4.00	4.00					WRP
	209.80	32.81	201.50	176.99	32.09	MAS = 10.00 (m)	1140.00	1124.52					MinPts
	209.81	32.81	201.48	177.01	31.89	MAS = 10.00 (m)	1150.00	1134.15					MINPT-O-EOU
	225.69	32.81	216.26	192.88	29.33	MAS = 10.00 (m)	1370.00	1346.06					MinPt-O-SF
	1062.13	32.81	1047.29	1029.32	80.13	MAS = 10.00 (m)	3410.00	3311.07					MinPt-O-SF
	1232.78	32.81	1216.33	1199.98	82.91	MAS = 10.00 (m)	3740.00	3628.94					MinPt-O-SF
	1341.55	32.81	1323.83	1308.74	83.16	MAS = 10.00 (m)	3960.00	3840.86					MinPt-O-SF
	1379.13	32.81	1360.92	1346.32	82.96	MAS = 10.00 (m)	4040.00	3917.92					MinPt-O-SF
	1466.88	32.81	1447.74	1434.08	83.54	MAS = 10.00 (m)	4230.00	4100.93					MinPt-O-SF
	1754.67	32.82	1732.26	1721.85	84.25	OSF1.50	4820.00	4669.24					MinPt-O-SF
	2025.49	36.98	2000.30	1988.50	85.81	OSF1.50	5390.00	5218.29					MinPt-O-SF
	2120.81	38.61	2094.53	2082.20	85.89	OSF1.50	5590.00	5410.94					MinPt-O-SF
	2243.74	40.40	2216.27	2203.34	86.70	OSF1.50	5840.00	5651.75					MinPt-O-SF
	2352.19	43.43	2322.71	2308.76	84.30	OSF1.50	6070.00	5873.30					MinPt-O-SF
	2571.58	51.19	2536.91	2520.38	77.74	OSF1.50	6800.00	6576.46					MinPt-O-SF
	9195.01	71.28	9146.95	9123.73	197.92	OSF1.50	15300.20	7196.00					TD
Meyer 8 GYRO 0' to 7678' - AB (Def Survey)													Pass
	3873.09	32.81	3871.28	3840.29	N/A	MAS = 10.00 (m)	0.00	0.00					Surface
	3873.07	32.81	3871.24	3840.26	165140.07	MAS = 10.00 (m)	4.00	4.00					MinPt-O-SF
	3659.74	34.07	3636.49	3625.67	169.03	OSF1.50	4590.00	4447.70					MinPt-CiCt
	3659.77	34.15	3636.47	3625.62	168.63	OSF1.50	4610.00	4466.96					MINPT-O-EOU
	3659.83	34.22	3636.48	3625.61	168.24	OSF1.50	4630.00	4486.23					MinPt-O-ADP
	3659.39	37.87	3633.61	3621.52	151.31	OSF1.50	5270.00	5102.70					MinPt-CiCt
	3659.62	38.56	3633.39	3621.07	148.50	OSF1.50	5380.00	5189.40					MINPT-O-EOU
	3660.30	39.40	3633.49	3620.89	145.20	OSF1.50	5470.00	5295.35					MinPt-O-ADP
	3664.29	42.09	3635.68	3622.19	135.69	OSF1.50	5850.00	5661.38					MinPt-O-ADP
	3662.89	46.89	3631.09	3615.99	121.27	OSF1.50	6490.00	6277.86					MinPt-CiCt

Offset Trajectory	Separation			Allow Dev. (ft)	Sep. Fact.	Controlling Rule	Reference Trajectory		Risk Level			Alert	Status
	Ct-Ct (ft)	MAS (ft)	EOU (ft)				MD (ft)	TVD (ft)	Alert	Minor	Major		
Greeley 21-20 MWD 0' to 7619' - PR (Def Survey)													
	3652.97	47.14	3631.01	3615.83	120.60	OSF1.50	6530.00	6316.39				MINPT-O-EOU	
	3663.14	47.34	3631.05	3615.80	120.10	OSF1.50	6560.00	6345.28				MinPt-O-ADP	
	715.95	105.85	644.85	610.10	10.28	OSF1.50	10830.00	7233.57				MinPts	
	716.29	105.99	645.09	610.30	10.27	OSF1.50	10850.00	7233.40				MinPt-O-SF	
	4529.11	54.42	4492.30	4474.69	128.57	OSF1.50	15300.20	7196.00				TD	
SW Greeley 18-20 MWD 0' to 7700' - PR (Def Survey)													
	1642.86	32.81	1641.05	1610.05	N/A	MAS = 10.00 (m)	0.00	0.00				Surface	Pass
	1642.85	32.81	1641.04	1610.05	N/A	MAS = 10.00 (m)	4.00	4.00				WRP	
	965.90	32.81	944.89	933.05	49.70	MAS = 10.00 (m)	4480.00	4341.74				MinPts	
	965.97	32.81	944.81	933.16	49.32	MAS = 10.00 (m)	4510.00	4370.64				MINPT-O-EOU	
	1101.72	40.80	1073.98	1060.91	42.10	OSF1.50	5780.00	5593.96				MinPt-O-SF	
	1125.41	41.72	1097.06	1083.69	42.02	OSF1.50	5910.00	5719.18				MinPt-O-SF	
	1180.75	43.35	1151.31	1137.39	42.37	OSF1.50	6170.00	5969.62				MinPt-O-SF	
	1216.60	44.61	1186.32	1171.99	42.38	OSF1.50	6330.00	6123.74				MinPt-O-SF	
	1238.74	45.38	1207.95	1193.35	42.39	OSF1.50	6430.00	6220.06				MinPt-O-SF	
	1267.32	46.41	1235.85	1220.91	42.37	OSF1.50	6560.00	6345.28				MinPt-O-SF	
	1304.70	47.74	1272.34	1256.96	42.37	OSF1.50	6730.00	6509.04				MinPt-O-SF	
	1343.83	48.72	1310.81	1295.11	42.73	OSF1.50	6960.00	6729.08				MinPt-O-SF	
	1272.10	54.24	1235.41	1217.85	36.21	OSF1.50	7960.00	7257.69				MinPts	
	1285.37	55.42	1247.89	1229.95	35.78	OSF1.50	8140.00	7256.17				MinPt-O-SF	
	7450.37	49.98	7416.51	7400.38	230.95	OSF1.50	15300.20	7196.00				TD	
SW Greeley 18-20 MWD 0' to 7700' - PR (Def Survey)													
	1760.96	32.81	1759.07	1728.15	24545.27	MAS = 10.00 (m)	0.00	0.00				Surface	Pass
	1760.96	32.81	1759.06	1728.15	21837.57	MAS = 10.00 (m)	4.00	4.00				WRP	
	1391.49	32.81	1377.86	1358.69	116.72	MAS = 10.00 (m)	2800.00	2723.50				MinPt-O-SF	
	1036.21	33.76	1013.17	1002.45	48.26	OSF1.50	5110.00	4948.58				MinPt-CiCt	
	1036.29	34.04	1013.06	1002.25	47.85	OSF1.50	5140.00	4977.48				MINPT-O-EOU	
	1036.52	34.33	1013.10	1002.19	47.44	OSF1.50	5170.00	5006.38				MinPt-O-ADP	
	1170.01	45.39	1139.21	1124.62	40.03	OSF1.50	6430.00	6220.06				MinPt-O-SF	
	1175.38	45.59	1144.46	1129.79	40.03	OSF1.50	6460.00	6248.96				MinPt-O-SF	
	1242.77	48.85	1209.67	1193.92	39.40	OSF1.50	6800.00	6576.46				MinPt-O-SF	
	8954.70	50.87	8920.26	8903.84	272.62	OSF1.50	15300.20	7196.00				TD	
Meyer 2 GYRO 0' to 8010' - AB (Def Survey)													
	3779.80	32.81	3777.99	3746.99	N/A	MAS = 10.00 (m)	0.00	0.00				Surface	Pass
	3779.78	32.81	3777.94	3746.97	165556.03	MAS = 10.00 (m)	4.00	4.00				MinPt-O-SF	
	3347.97	33.16	3325.32	3314.81	159.24	OSF1.50	4380.00	4245.42				MinPt-CiCt	
	3347.97	33.16	3325.32	3314.81	159.24	OSF1.50	4410.00	4274.32				MINPT-O-EOU	
	3348.01	33.21	3325.33	3314.80	158.99	OSF1.50	4420.00	4283.95				MinPt-O-ADP	
	3461.04	45.15	3430.40	3415.89	119.16	OSF1.50	6800.00	6576.46				MinPt-O-SF	
	1073.20	102.18	1004.54	971.02	15.98	OSF1.50	10550.00	7235.92				MinPt-CiCt	
	1073.20	102.33	1004.45	970.87	15.96	OSF1.50	10560.00	7235.84				MINPT-O-EOU	
	1073.30	102.47	1004.45	970.83	15.94	OSF1.50	10570.00	7235.75				MinPt-O-ADP	
	1077.43	103.35	1007.99	974.08	15.84	OSF1.50	10650.00	7235.08				MinPt-O-SF	
	4864.97	59.79	4824.58	4805.18	125.37	OSF1.50	15300.20	7196.00				TD	
Lesser J 21-17 - Plan (Def Plan)													
	6887.11	32.81	6885.30	6854.30	N/A	MAS = 10.00 (m)	0.00	0.00				Surface	Pass
	6887.08	32.81	6885.23	6854.27	197085.51	MAS = 10.00 (m)	4.00	4.00				MinPt-O-SF	
	6853.67	32.81	6843.62	6821.06	812.59	MAS = 10.00 (m)	1300.00	1278.64				MinPt-O-SF	
	6689.19	39.27	6662.47	6649.92	266.30	OSF1.50	5060.00	4900.42				MinPt-CiCt	
	6689.37	40.35	6661.94	6649.02	258.91	OSF1.50	5180.00	5016.01				MinPts	
	6731.45	46.23	6700.10	6685.23	226.23	OSF1.50	6800.00	6576.46				MinPt-O-SF	
	1104.17	182.32	982.09	921.85	9.15	OSF1.50	13870.00	7208.02				MinPt-CiCt	
	1104.22	182.45	982.05	921.77	9.15	OSF1.50	13880.00	7207.94				MinPts	
	1105.30	182.84	982.87	922.46	9.13	OSF1.50	13920.00	7207.60				MinPt-O-SF	
	1806.63	129.02	1720.08	1677.61	21.25	OSF1.50	15300.20	7196.00				TD	
Greeley 17-20 MWD 0' to 7675' - PR (Def Survey)													
	1662.30	32.81	1660.48	1629.49	N/A	MAS = 10.00 (m)	0.00	0.00				Surface	Pass
	1662.29	32.81	1660.48	1629.48	N/A	MAS = 10.00 (m)	4.00	4.00				WRP	
	1538.71	32.81	1526.92	1505.76	156.52	MAS = 10.00 (m)	1690.00	1654.30				MinPts	
	1546.26	32.81	1533.43	1513.45	137.66	MAS = 10.00 (m)	1960.00	1914.37				MINPT-O-EOU	
	2252.96	45.89	2221.83	2207.07	76.28	OSF1.50	6800.00	6576.46				MinPt-O-SF	
	1160.63	76.07	1109.38	1084.56	23.35	OSF1.50	9240.00	7246.93				MinPt-CiCt	
	1160.67	76.22	1109.32	1084.45	23.30	OSF1.50	9250.00	7246.84				MINPT-O-EOU	
	1160.80	76.37	1109.35	1084.43	23.26	OSF1.50	9280.00	7246.76				MinPt-O-ADP	
	1172.99	78.13	1120.37	1094.66	22.94	OSF1.50	9410.00	7245.50				MinPt-O-SF	
	6159.18	58.97	6119.33	6100.21	161.00	OSF1.50	15300.20	7196.00				TD	
Lesser J 21-18D MWD 0' to 7595' - SI (Def Survey)													
	6710.44	32.81	6708.63	6677.63	N/A	MAS = 10.00 (m)	0.00	0.00				Surface	Pass
	6710.41	32.81	6708.56	6677.60	100298.62	MAS = 10.00 (m)	4.00	4.00				MinPt-O-SF	
	6043.12	32.81	6014.24	6000.90	53921.17	MAS = 10.00 (m)	60.00	60.00				MinPts	
	6043.16	42.22	6014.33	6000.90	224.95	OSF1.50	5550.00	5372.41				MinPt-CiCt	
	6043.24	42.37	6014.27	6000.79	224.11	OSF1.50	5580.00	5401.31				MINPT-O-EOU	
	1270.76	42.46	6014.28	6000.77	223.56	OSF1.50	5600.00	5420.57				MinPt-O-ADP	
	1270.83	166.36	1159.31	1104.39	11.55	OSF1.50	13200.00	7213.65				MinPt-CiCt	
	1272.95	166.51	1159.29	1104.33	11.55	OSF1.50	13210.00	7213.57				MinPts	
	2458.52	167.18	1160.96	1105.77	11.52	OSF1.50	13270.00	7213.06				MinPt-O-SF	
	2458.52	111.69	2383.53	2346.83	33.48	OSF1.50	15300.20	7196.00				TD	
Meyer 5 GYRO 0' to 7665' - AB (Def Survey)													
	3826.32	32.81	3824.50	3793.51	N/A	MAS = 10.00 (m)	0.00	0.00				Surface	Pass
	3826.29	32.81	3824.46	3793.48	161174.12	MAS = 10.00 (m)	4.00	4.00				MinPt-O-SF	
	3783.52	32.81	3824.37	3793.43	64313.74	MAS = 10.00 (m)	30.00	30.00				MinPts	
	3783.68	32.81	3773.46	3750.71	458.44	MAS = 10.00 (m)	1440.00	1413.49				MinPts	
	4744.37	32.81	3773.25	3750.87	439.28	MAS = 10.00 (m)	1490.00	1461.65				MINPT-O-EOU	
	1273.41	51.96	4709.19	4692.40	141.26	OSF1.50	6450.00	6239.33				MinPts	
	1273.47	134.92	1182.93	1138.50	14.31	OSF1.50	11880.00	7224.91				MinPt-CiCt	
	1273.62	135.07	1182.89	1138.40	14.29	OSF1.50	11870.00	7224.83				MINPT-O-EOU	
	1277.56	135.22	1182.94	1138.40	14.28	OSF1.50	11880.00	7224.74				MinPt-O-ADP	
	3670.90	136.14	1186.27	1141.42	14.23	OSF1.50	11960.00	7224.07				MinPt-O-SF	
	3670.90	85.99	3613.03	3584.90	65.22	OSF1.50	15300.20	7196.00				TD	
Hurst 7-20 MWD 0' to 7650' - PR (Def Survey)													
													Pass

Offset Trajectory	Separation			Allow Dev. (ft)	Sep. Fact.	Controlling Rule	Reference Trajectory		Risk Level			Alert	Status
	Ct-Ct (ft)	MAS (ft)	EOU (ft)				MD (ft)	TVD (ft)	Alert	Minor	Major		
	1603.13	32.81	1601.32	1570.32	N/A	MAS = 10.00 (m)	0.00	0.00				Surface	
	1603.09	32.81	1601.24	1570.26	41647.09	MAS = 10.00 (m)	4.00	4.00				MinPt-O-SF	
	1323.29	32.81	1308.57	1290.47	100.90	MAS = 10.00 (m)	2840.00	2762.03				MinPts	
	1323.31	32.81	1308.53	1290.50	100.36	MAS = 10.00 (m)	2860.00	2781.29				MINPT-O-EOU	
	1562.88	32.81	1540.59	1530.07	75.51	MAS = 10.00 (m)	4650.00	4505.49				MinPt-O-SF	
	1702.67	36.63	1677.71	1666.04	72.85	OSF1.50	5180.00	5016.01				MinPt-O-SF	
	1931.27	43.65	1901.63	1887.61	68.83	OSF1.50	6080.00	5882.93				MinPt-O-SF	
	2092.69	48.94	2059.54	2043.76	66.27	OSF1.50	6791.44	6568.21				MinPt-O-SF	
	2102.42	49.17	2069.11	2053.25	66.25	OSF1.50	6840.00	6614.96				MinPt-O-SF	
	1856.79	60.83	1815.70	1795.96	46.99	OSF1.50	8480.00	7253.32				MinPt-CiCt	
	1856.82	60.95	1815.66	1795.88	46.90	OSF1.50	8490.00	7253.23				MINPT-O-EOU	
	1856.92	61.06	1815.67	1795.89	46.81	OSF1.50	8500.00	7253.15				MinPt-O-ADP	
	1920.86	66.05	1876.29	1854.81	44.67	OSF1.50	8970.00	7249.20				MinPt-O-SF	
	7070.17	66.32	7025.42	7003.85	163.85	OSF1.50	15300.20	7196.00				TD	
Barnett 5-20 Blind 0' to 7622' - PR (Def Survey)													Pass
	1334.84	32.81	1332.32	1302.03	1900.24	MAS = 10.00 (m)	0.00	0.00				Surface	
	1334.84	32.81	1332.24	1302.03	1706.14	MAS = 10.00 (m)	4.00	4.00				WRP	
	1334.84	32.81	1325.58	1302.03	179.33	MAS = 10.00 (m)	200.00	200.00				MinPts	
	1345.88	54.64	1308.85	1291.24	38.16	OSF1.50	900.00	893.06				MINPT-O-EOU	
	1360.94	72.17	1312.23	1288.77	28.98	OSF1.50	1200.00	1182.31				MinPt-O-ADP	
	2270.07	403.50	2000.53	1866.57	8.47	OSF1.50	6820.00	6691.39				MinPt-O-SF	
	9532.83	433.02	9343.61	9199.81	33.49	OSF1.50	15300.20	7196.00				TD	
SW Greeley 31-20 MWD 0' to 7695' - PR (Def Survey)													Pass
	1361.47	32.81	1359.58	1328.66	18818.99	MAS = 10.00 (m)	0.00	0.00				Surface	
	1361.47	32.81	1359.57	1328.66	15142.15	MAS = 10.00 (m)	4.00	4.00				WRP	
	1361.31	32.81	1359.27	1328.50	1105.45	MAS = 10.00 (m)	250.00	250.00				MinPts	
	1362.02	32.81	1357.40	1329.21	483.67	MAS = 10.00 (m)	500.00	499.45				MINPT-O-EOU	
	1453.67	32.81	1441.31	1420.86	135.05	MAS = 10.00 (m)	1900.00	1856.58				MinPt-O-SF	
	1507.70	32.81	1495.16	1474.89	137.71	MAS = 10.00 (m)	2290.00	2232.24				MinPt-O-SF	
	2222.78	49.07	2189.53	2173.71	70.19	OSF1.50	6800.00	6576.46				MinPt-O-SF	
	10085.76	51.24	10051.06	10034.52	304.74	OSF1.50	15300.20	7196.00				TD	
Barnett 1-20 GYRO 0' to 7625' - PR (Def Survey)													Pass
	1796.74	32.81	1794.84	1763.93	20838.31	MAS = 10.00 (m)	0.00	0.00				MinPts	
	1796.75	32.81	1794.84	1763.94	18510.87	MAS = 10.00 (m)	4.00	4.00				WRP	
	1796.86	32.81	1794.80	1764.05	7422.68	MAS = 10.00 (m)	50.00	50.00				MINPT-O-EOU	
	1440.45	32.81	1418.07	1407.65	69.23	MAS = 10.00 (m)	4640.00	4495.86				MinPt-CiCt	
	1440.74	33.59	1417.81	1407.15	67.49	OSF1.50	4750.00	4601.82				MINPT-O-EOU	
	1441.18	34.12	1417.90	1407.06	66.41	OSF1.50	4820.00	4669.24				MinPt-O-ADP	
	1441.50	34.91	1417.69	1406.59	64.84	OSF1.50	5060.00	4900.42				MinPt-CiCt	
	1441.52	34.97	1417.67	1406.55	64.73	OSF1.50	5080.00	4919.69				MINPT-O-EOU	
	1441.55	35.00	1417.68	1406.54	64.67	OSF1.50	5090.00	4929.32				MinPt-O-ADP	
	1543.70	45.40	1512.90	1498.30	52.81	OSF1.50	6800.00	6576.46				MinPt-O-SF	
	9568.22	46.36	9536.78	9521.86	320.62	OSF1.50	15300.20	7196.00				TD	
Hurst 8-20 MWD 0' to 7840' - PR (Def Survey)													Pass
	1623.16	32.81	1621.35	1590.36	N/A	MAS = 10.00 (m)	0.00	0.00				Surface	
	1623.13	32.81	1621.28	1590.32	43982.39	MAS = 10.00 (m)	4.00	4.00				MinPt-O-SF	
	1584.17	32.81	1575.01	1551.32	215.59	MAS = 10.00 (m)	1220.00	1201.58				MinPts	
	1584.26	32.81	1574.96	1551.45	211.41	MAS = 10.00 (m)	1240.00	1220.84				MINPT-O-EOU	
	1690.10	32.81	1675.38	1657.29	128.73	MAS = 10.00 (m)	2090.00	2039.60				MinPt-O-SF	
	1780.90	32.81	1765.19	1748.09	126.12	MAS = 10.00 (m)	2450.00	2386.36				MinPt-O-SF	
	2120.78	32.81	2101.06	2087.97	116.98	MAS = 10.00 (m)	3530.00	3426.66				MinPt-O-SF	
	2333.26	32.81	2311.11	2300.45	113.48	MAS = 10.00 (m)	4040.00	3917.92				MinPt-O-SF	
	2397.61	34.57	2374.03	2363.04	109.02	OSF1.50	4210.00	4081.67				MinPt-O-SF	
	2459.61	36.03	2435.05	2423.58	107.10	OSF1.50	4390.00	4255.05				MinPt-O-SF	
	2501.69	36.56	2476.78	2465.13	107.27	OSF1.50	4510.00	4370.64				MinPt-O-SF	
	2534.46	37.62	2508.84	2496.84	105.49	OSF1.50	4600.00	4457.33				MinPt-O-SF	
	2712.19	42.46	2683.35	2669.74	99.53	OSF1.50	5150.00	4987.11				MinPt-O-SF	
	2908.60	50.68	2874.28	2857.93	88.86	OSF1.50	6800.00	6576.46				MinPt-O-SF	
	1705.53	90.81	1644.45	1614.71	28.65	OSF1.50	9680.00	7243.23				MinPt-CiCt	
	1705.62	91.21	1644.29	1614.42	28.53	OSF1.50	9700.00	7243.06				MINPT-O-EOU	
	1705.76	91.40	1644.29	1614.36	28.47	OSF1.50	9710.00	7242.98				MinPt-O-ADP	
	1746.78	96.85	1681.68	1649.93	27.49	OSF1.50	10060.00	7240.04				MinPt-O-SF	
	5858.32	80.94	5803.83	5777.38	110.74	OSF1.50	15300.20	7196.00				TD	
HSR-Wiedeman 10-20 GYRO 0' to 7535' - AB (Def Survey)													Pass
	1734.61	32.81	1732.79	1701.80	N/A	MAS = 10.00 (m)	0.00	0.00				Surface	
	1734.51	32.81	1732.59	1701.70	16550.59	MAS = 10.00 (m)	4.00	4.00				MinPt-O-SF	
	1733.62	32.81	1730.90	1700.81	1900.99	MAS = 10.00 (m)	220.00	220.00				MinPts	
	1733.70	32.81	1730.86	1700.89	1697.62	MAS = 10.00 (m)	240.00	240.00				MINPT-O-EOU	
	2021.00	32.81	2009.69	1988.19	208.23	MAS = 10.00 (m)	1900.00	1856.58				MinPt-O-SF	
	3188.43	45.28	3157.71	3143.16	109.46	OSF1.50	6800.00	6576.46				MinPt-O-SF	
	3166.40	56.28	3128.35	3110.12	86.82	OSF1.50	8290.00	7254.91				MinPt-CiCt	
	3166.48	56.53	3128.26	3109.95	86.43	OSF1.50	8310.00	7254.74				MINPT-O-EOU	
	3166.69	56.78	3128.30	3109.91	86.04	OSF1.50	8330.00	7254.58				MinPt-O-ADP	
	3530.86	74.60	3480.59	3456.26	72.62	OSF1.50	9850.00	7241.80				MinPt-O-SF	
	7693.71	88.09	7634.45	7605.62	133.41	OSF1.50	15300.20	7196.00				TD	
Wiedeman 24-20 GYRO 0' to 7660' - AB (Def Survey)													Pass
	1758.27	32.81	1756.45	1725.46	N/A	MAS = 10.00 (m)	0.00	0.00				Surface	
	1758.17	32.81	1756.26	1725.36	17441.55	MAS = 10.00 (m)	4.00	4.00				MinPt-O-SF	
	1756.52	32.81	1753.47	1723.71	1417.81	MAS = 10.00 (m)	240.00	240.00				MinPts	
	1756.62	32.81	1753.38	1723.81	1226.89	MAS = 10.00 (m)	270.00	269.99				MINPT-O-EOU	
	2972.33	53.78	2935.94	2918.55	85.40	OSF1.50	6800.00	6576.46				MinPt-O-SF	
	2969.77	72.39	2920.97	2497.38	54.42	OSF1.50	8950.00	7249.37				MinPt-CiCt	
	2569.90	72.78	2520.88	2497.12	54.13	OSF1.50	8980.00	7249.11				MINPT-O-EOU	
	2570.02	72.91	2520.89	2497.12	54.03	OSF1.50	8990.00	7249.03				MinPt-O-ADP	
	2887.31	81.23	2832.61	2806.07	50.59	OSF1.50	9740.00	7242.73				MinPt-O-SF	
	6845.28	83.58	6789.03	6761.70	125.23	OSF1.50	15300.20	7196.00				TD	
Wiedeman 25-20 GYRO 0' to 7638' - AB (Def Survey)													Pass
	1844.47	32.81	1842.65	1811.66	N/A	MAS = 10.00 (m)	0.00	0.00				Surface	
	1844.38	32.81	1842.47	1811.57	19699.91	MAS = 10.00 (m)	4.00	4.00				MinPt-O-SF	
	1843.33	32.81	1840.46	1810.52	1786.90	MAS = 10.00 (m)	230.00	230.00				MinPts	

Offset Trajectory	Separation				Sep. Fact.	Controlling Rule	Reference Trajectory		Risk Level			Alert	Status
	Ct-Ct (ft)	MAS (ft)	EOU (ft)	Allow Dev. (ft)			MD (ft)	TVD (ft)	Alert	Minor	Major		
	1818.17	32.81	1800.82	1785.38	115.43	MAS = 10.00 (m)	0.00	2588.64				MinPts	
	1818.19	32.81	1800.79	1785.38	115.01	MAS = 10.00 (m)	0.00	2680.00				MinPt-O-SF	
	2260.97	47.64	2228.67	2213.39	73.62	OSF1.50	5850.00	5661.38				MinPt-O-SF	
	2504.87	53.21	2468.86	2451.66	72.76	OSF1.50	6791.44	6568.21				MinPt-O-SF	
	2779.94	65.90	2735.47	2714.04	64.82	OSF1.50	8870.00	7250.04				MinPt-O-SF	
	2794.28	66.23	2749.59	2728.05	64.82	OSF1.50	8910.00	7249.70				MinPt-O-SF	
	7852.67	79.30	7799.26	7773.36	151.56	OSF1.50	15300.20	7196.00				TD	
Lesser J 21-8 - Plan (Def Plan)													Pass
	6909.35	32.81	6907.54	6876.54	N/A	MAS = 10.00 (m)	0.00	0.00				Surface	
	6909.32	32.81	6907.47	6876.51	198360.69	MAS = 10.00 (m)	4.00	4.00				MinPt-O-SF	
	6856.62	32.81	6842.66	6823.81	555.44	MAS = 10.00 (m)	1900.00	1856.58				MinPt-O-SF	
	6855.54	32.81	6841.67	6822.73	559.49	MAS = 10.00 (m)	2050.00	2001.07				MINPT-O-EOU	
	6855.53	32.81	6841.67	6822.73	559.68	MAS = 10.00 (m)	2060.00	2010.70				MinPts	
	7548.11	56.80	7509.70	7491.30	205.07	OSF1.50	6280.00	6075.58				MinPts	
	1837.92	203.39	1701.79	1634.53	13.65	OSF1.50	14600.00	7201.88				MinPt-CiCt	
	1838.05	203.77	1701.67	1634.28	13.63	OSF1.50	14620.00	7201.72				MINPT-O-EOU	
	1838.20	203.96	1701.70	1634.25	13.61	OSF1.50	14630.00	7201.63				MinPt-O-ADP	
	1846.00	205.95	1708.17	1640.05	13.54	OSF1.50	14770.00	7200.46				MinPt-O-SF	
	1967.69	204.19	1831.04	1763.51	14.56	OSF1.50	15300.20	7196.00				TD	
Lesser 7-21 Blind 0' to 7508' - AB (Def Survey)													Pass
	6547.60	32.81	6545.78	6514.79	N/A	MAS = 10.00 (m)	0.00	0.00				Surface	
	6547.54	32.81	6545.66	6514.73	97328.21	MAS = 10.00 (m)	4.00	4.00				MinPt-O-SF	
	6546.82	32.81	6542.92	6514.01	3138.40	MAS = 10.00 (m)	200.00	200.00				MinPts	
	6814.84	228.66	6481.91	6386.25	43.70	OSF1.50	4060.00	3937.18				MINPT-O-EOU	
	6704.01	335.49	6479.81	6368.51	30.11	OSF1.50	5910.00	5718.18				MinPt-O-ADP	
	1860.83	460.29	1553.43	1400.54	6.08	OSF1.50	13750.00	7209.03				MinPt-CiCt	
	1860.85	460.36	1553.41	1400.49	6.08	OSF1.50	13760.00	7208.94				MinPts	
	1861.47	460.60	1553.87	1400.87	6.08	OSF1.50	13800.00	7208.61				MinPt-O-SF	
	2421.24	452.55	2119.00	1968.68	8.05	OSF1.50	15300.20	7196.00				TD	
Wiedeman 40-20 GYRO 0' to 7935' - AB (Def Survey)													Pass
	1864.28	32.81	1862.46	1831.47	N/A	MAS = 10.00 (m)	0.00	0.00				Surface	
	1864.19	32.81	1862.28	1831.38	19119.26	MAS = 10.00 (m)	4.00	4.00				MinPt-O-SF	
	1861.93	32.81	1858.85	1829.12	1464.39	MAS = 10.00 (m)	250.00	250.00				MinPts	
	1861.96	32.81	1858.82	1829.15	1409.34	MAS = 10.00 (m)	260.00	260.00				MINPT-O-EOU	
	3868.29	66.64	3823.33	3801.66	89.19	OSF1.50	6240.00	6037.05				MinPt-O-ADP	
	2627.97	117.08	2549.38	2510.89	34.12	OSF1.50	10450.00	7236.76				MinPt-CiCt	
	2628.07	117.33	2549.32	2510.74	34.04	OSF1.50	10470.00	7236.59				MINPT-O-EOU	
	2628.18	117.46	2549.34	2510.73	34.01	OSF1.50	10480.00	7236.51				MinPt-O-ADP	
	2668.54	121.82	2586.79	2546.72	33.28	OSF1.50	10910.00	7232.89				MinPt-O-SF	
	5518.96	108.87	5445.85	5410.09	77.15	OSF1.50	15300.20	7196.00				TD	
Meyer 1 Blind 0' to 7482' - AB (Def Survey)													Pass
	5229.80	32.81	5227.99	5196.99	N/A	MAS = 10.00 (m)	0.00	0.00				Surface	
	5229.74	32.81	5227.86	5196.93	77212.89	MAS = 10.00 (m)	4.00	4.00				MinPt-O-SF	
	5229.16	32.81	5224.53	5196.35	1858.75	MAS = 10.00 (m)	200.00	200.00				MinPts	
	5283.35	187.08	5158.10	5086.27	42.71	OSF1.50	3320.00	3224.38				MINPT-O-EOU	
	5354.65	272.49	5172.44	5082.16	29.64	OSF1.50	4800.00	4649.98				MinPt-O-ADP	
	1871.08	450.15	1570.45	1420.95	6.25	OSF1.50	12430.00	7220.12				MinPt-CiCt	
	1871.09	450.20	1570.42	1420.89	6.25	OSF1.50	12440.00	7220.04				MinPts	
	1871.44	450.36	1570.66	1421.08	6.25	OSF1.50	12470.00	7219.78				MinPt-O-SF	
	3423.35	438.37	3130.57	2984.98	11.75	OSF1.50	15300.20	7196.00				TD	
Hayes 1 Blind 0' to 9502' - AB (Def Survey)													Pass
	2601.14	32.81	2599.33	2568.33	N/A	MAS = 10.00 (m)	0.00	0.00				Surface	
	2601.05	32.81	2599.14	2568.24	25676.82	MAS = 10.00 (m)	4.00	4.00				MinPt-O-SF	
	2600.40	32.81	2595.00	2567.59	723.80	MAS = 10.00 (m)	200.00	200.00				MinPts	
	2624.96	100.79	2557.16	2524.17	39.75	OSF1.50	1790.00	1750.62				MINPT-O-EOU	
	2627.22	104.05	2557.32	2523.17	38.45	OSF1.50	1850.00	1808.42				MINPT-O-EOU	
	2661.81	145.23	2564.45	2516.58	27.78	OSF1.50	2570.00	2501.95				MinPt-O-ADP	
	1892.47	436.61	1600.86	1455.86	6.52	OSF1.50	9800.00	7242.22				MinPt-CiCt	
	1892.47	436.63	1600.85	1455.84	6.52	OSF1.50	9810.00	7242.14				MinPts	
	1892.64	436.69	1600.98	1455.95	6.52	OSF1.50	9830.00	7241.97				MinPt-O-SF	
	5812.42	430.04	5525.19	5382.38	20.34	OSF1.50	15300.20	7196.00				TD	
Lesser J 21-7X GYRO 0' to 7725' - AB (Def Survey)													Pass
	6867.62	32.81	6865.80	6834.81	N/A	MAS = 10.00 (m)	0.00	0.00				Surface	
	6867.58	32.81	6865.72	6834.77	155021.61	MAS = 10.00 (m)	4.00	4.00				MinPt-O-SF	
	6867.25	32.81	6865.29	6834.44	46822.03	MAS = 10.00 (m)	70.00	70.00				MinPts	
	6867.38	32.81	6865.22	6834.58	19293.63	MAS = 10.00 (m)	130.00	130.00				MINPT-O-EOU	
	6730.62	36.08	6706.03	6694.54	292.76	OSF1.50	3450.00	3349.60				MinPt-CiCt	
	6730.75	36.53	6705.88	6694.22	288.96	OSF1.50	3510.00	3407.40				MINPT-O-EOU	
	6730.86	36.67	6705.88	6694.19	287.83	OSF1.50	3530.00	3426.66				MinPt-O-ADP	
	6796.22	50.48	6762.04	6745.75	208.54	OSF1.50	4900.00	4746.30				MinPt-O-ADP	
	6854.94	57.61	6816.00	6797.33	183.56	OSF1.50	5480.00	5304.98				MinPts	
	2003.50	185.80	1879.10	1817.70	16.30	OSF1.50	13910.00	7207.68				MinPt-CiCt	
	2003.60	186.16	1878.96	1817.44	16.27	OSF1.50	13930.00	7207.51				MINPT-O-EOU	
	2003.73	186.34	1878.97	1817.38	16.26	OSF1.50	13940.00	7207.43				MinPt-O-ADP	
	2014.47	188.80	1888.07	1825.67	16.13	OSF1.50	14120.00	7205.92				MinPt-O-SF	
	2438.52	178.03	2319.30	2260.49	20.72	OSF1.50	15300.20	7196.00				TD	
Meyer 3 GYRO 0' to 7745' - AB (Def Survey)													Pass
	3795.67	32.81	3793.86	3762.87	N/A	MAS = 10.00 (m)	0.00	0.00				Surface	
	3795.65	32.81	3793.82	3762.84	166950.07	MAS = 10.00 (m)	4.00	4.00				MinPt-O-SF	
	3795.31	32.81	3792.94	3762.50	6778.88	MAS = 10.00 (m)	160.00	160.00				MinPts	
	3709.31	32.81	3693.87	3676.50	268.05	MAS = 10.00 (m)	2220.00	2164.82				MinPts	
	3709.43	32.81	3693.82	3676.62	264.74	MAS = 10.00 (m)	2270.00	2212.98				MINPT-O-EOU	
	4173.66	53.71	4137.32	4119.95	120.10	OSF1.50	5650.00	5468.74				MinPt-O-ADP	
	2011.30	117.53	1932.41	1893.77	26.00	OSF1.50	11120.00	7231.13				MinPt-CiCt	
	2011.49	118.07	1932.25	1893.43	25.89	OSF1.50	11150.00	7230.88				MINPT-O-EOU	
	2011.65	118.24	1932.29	1893.41	25.85	OSF1.50	11160.00	7230.79				MinPt-O-ADP	
	2041.11	122.51	1958.90	1918.60	25.30	OSF1.50	11470.00	7228.19				MinPt-O-SF	
	4635.63	103.20	4566.29	4532.43	68.42	OSF1.50	15300.20	7196.00				TD	
Lundvall 12-20 MWD 0' to 7703' - PR (Def Survey)													Pass
	2472.91	32.81	2471.10	2440.10	N/A	MAS = 10.00 (m)	0.00	0.00				Surface	
	2472.89	32.81	2471.07	2440.08	156156.66	MAS = 10.00 (m)	4.00	4.00				MinPt-O-SF	

Offset Trajectory	Separation			Allow Dev. (ft)	Sep. Fact.	Controlling Rule	Reference Trajectory		Risk Level			Alert	Status
	Ct-Ct (ft)	MAS (ft)	EOU (ft)				MD (ft)	TVD (ft)	Alert	Minor	Major		
	2472.61	32.81	2459.81	2439.80	2508.97	MAS = 10.00 (m)	210.00	210.00				MinPts	
	2472.68	32.81	2469.76	2439.87	2219.38	MAS = 10.00 (m)	230.00	230.00				MINPT-O-EOU	
	2801.12	32.81	2789.70	2768.31	285.29	MAS = 10.00 (m)	1900.00	1856.58				MinPts	
	2990.25	32.81	2970.72	2957.44	166.69	MAS = 10.00 (m)	3540.00	3436.30				MinPts	
	2990.33	32.81	2970.66	2957.52	165.45	MAS = 10.00 (m)	3570.00	3465.19				MINPT-O-EOU	
	3007.00	34.01	2983.79	2972.99	139.10	OSF1.50	4120.00	3994.98				MinPt-CtCt	
	3007.08	34.21	2983.73	2972.87	138.26	OSF1.50	4150.00	4023.87				MINPT-O-EOU	
	3007.14	34.28	2983.76	2972.86	137.98	OSF1.50	4160.00	4033.51				MinPt-O-ADP	
	3268.67	55.75	3230.97	3212.92	90.60	OSF1.50	6800.00	6576.46				MinPt-O-SF	
	10110.16	76.35	10058.72	10033.80	202.85	OSF1.50	15300.20	7196.00				TD	
Meyer 4 GYRO 0' to 8410' - PR (Def Survey)													Pass
	3808.94	32.81	3807.13	3776.14	N/A	MAS = 10.00 (m)	0.00	0.00				Surface	
	3808.92	32.81	3807.09	3776.11	162890.03	MAS = 10.00 (m)	4.00	4.00				MinPt-O-SF	
	3792.29	32.81	3784.70	3759.49	655.41	MAS = 10.00 (m)	1030.00	1018.56				MinPts	
	3792.46	32.81	3784.52	3759.65	618.67	MAS = 10.00 (m)	1080.00	1066.72				MINPT-O-EOU	
	4891.91	47.90	4859.44	4844.01	158.44	OSF1.50	5670.00	5488.00				MinPt-O-SF	
	5190.71	63.76	5147.67	5126.95	125.22	OSF1.50	6350.00	6143.00				MinPts	
	5244.85	65.88	5200.39	5178.97	122.37	OSF1.50	6800.00	6576.46				MinPt-O-SF	
	2489.97	142.66	2394.33	2347.31	26.46	OSF1.50	11910.00	7224.49				MinPt-CtCt	
	2490.23	143.56	2393.99	2346.68	26.30	OSF1.50	11950.00	7224.15				MINPT-O-EOU	
	2490.60	143.99	2394.07	2346.61	26.22	OSF1.50	11970.00	7223.99				MinPt-O-ADP	
	2547.08	152.18	2445.09	2394.90	25.36	OSF1.50	12450.00	7219.95				MinPt-O-SF	
	4203.15	142.34	4107.72	4060.81	44.78	OSF1.50	15300.20	7196.00				TD	
Lundval 11-20 MWD 0' to 7810' - PR (Def Survey)													Pass
	2491.40	32.81	2489.59	2458.59	N/A	MAS = 10.00 (m)	0.00	0.00				Surface	
	2491.38	32.81	2489.55	2458.57	155612.81	MAS = 10.00 (m)	4.00	4.00				MinPt-O-SF	
	2491.29	32.81	2488.56	2458.47	2747.22	MAS = 10.00 (m)	200.00	200.00				MinPts	
	2491.33	32.81	2488.48	2458.52	2409.42	MAS = 10.00 (m)	220.00	220.00				MINPT-O-EOU	
	2593.62	32.81	2585.67	2560.81	422.69	MAS = 10.00 (m)	1010.00	999.30				MinPt-O-SF	
	2807.33	32.81	2795.24	2774.52	267.65	MAS = 10.00 (m)	2030.00	1981.80				MinPt-O-SF	
	2834.44	32.81	2822.25	2801.63	267.79	MAS = 10.00 (m)	2150.00	2097.39				MinPt-O-SF	
	2784.81	41.93	2756.32	2742.87	103.52	OSF1.50	4850.00	4698.14				MinPt-CtCt	
	2784.87	42.10	2756.27	2742.77	103.09	OSF1.50	4870.00	4717.41				MINPT-O-EOU	
	2784.94	42.18	2756.28	2742.76	102.89	OSF1.50	4880.00	4727.04				MinPt-O-ADP	
	2788.91	44.22	2758.89	2744.68	98.11	OSF1.50	5060.00	4900.42				MinPt-O-ADP	
	3018.15	56.94	2979.65	2961.21	81.77	OSF1.50	6791.44	6568.21				MinPt-O-SF	
	3303.93	59.79	3263.54	3244.15	85.14	OSF1.50	7960.00	7257.69				MinPt-O-SF	
	3316.45	59.93	3275.96	3256.51	85.25	OSF1.50	8010.00	7257.27				MinPt-O-SF	
	8751.42	84.77	8694.38	8666.65	157.82	OSF1.50	15300.20	7196.00				TD	
Wiedeman 20-20 GYRO 0' to 7542' - AB (Def Survey)													Pass
	2511.95	32.81	2510.13	2479.14	N/A	MAS = 10.00 (m)	0.00	0.00				Surface	
	2511.86	32.81	2509.95	2479.05	25719.17	MAS = 10.00 (m)	4.00	4.00				MinPt-O-SF	
	2499.03	32.81	2492.48	2466.22	526.70	MAS = 10.00 (m)	630.00	628.39				MinPts	
	2499.05	32.81	2492.45	2466.24	521.94	MAS = 10.00 (m)	640.00	638.27				MINPT-O-EOU	
	3797.63	45.22	3767.15	3752.61	430.58	OSF1.50	6800.00	6576.46				MinPt-O-SF	
	3819.31	45.44	3788.48	3773.87	430.62	OSF1.50	6900.00	6672.39				MinPt-O-SF	
	3665.31	62.78	3622.92	3602.53	89.84	OSF1.50	8740.00	7251.13				MinPt-CtCt	
	3665.50	63.41	3622.70	3602.10	88.93	OSF1.50	8780.00	7250.79				MINPT-O-EOU	
	3665.76	63.72	3622.75	3602.05	88.49	OSF1.50	8800.00	7250.63				MinPt-O-ADP	
	4136.60	89.37	4076.49	4047.23	70.67	OSF1.50	10660.00	7235.00				MinPt-O-SF	
	7512.14	104.39	7442.01	7407.74	109.60	OSF1.50	15300.20	7196.00				TD	
Wiedeman R J 20-13 GYRO 0' to 7980' - PA (Def Survey)													Pass
	2502.18	32.81	2500.36	2469.37	N/A	MAS = 10.00 (m)	0.00	0.00				Surface	
	2502.15	32.81	2500.32	2469.35	125284.00	MAS = 10.00 (m)	4.00	4.00				MinPt-O-SF	
	2501.90	32.81	2499.30	2469.09	3200.94	MAS = 10.00 (m)	210.00	210.00				MinPts	
	2501.92	32.81	2499.28	2469.11	2999.09	MAS = 10.00 (m)	220.00	220.00				MINPT-O-EOU	
	4291.15	373.20	4041.82	3917.96	17.32	OSF1.50	7470.00	7128.32				MinPt-O-SF	
	10007.58	385.47	9750.07	9622.11	39.10	OSF1.50	15300.20	7196.00				TD	
HSR-Wiedeman 14-20 GYRO 0' to 7527' - AB (Def Survey)													Pass
	2762.70	32.81	2760.88	2729.89	N/A	MAS = 10.00 (m)	0.00	0.00				Surface	
	2762.67	32.81	2760.82	2729.86	87371.00	MAS = 10.00 (m)	4.00	4.00				MinPt-O-SF	
	2762.38	32.81	2759.76	2729.57	3439.83	MAS = 10.00 (m)	200.00	200.00				MinPts	
	2762.44	32.81	2759.72	2729.63	3063.67	MAS = 10.00 (m)	220.00	220.00				MINPT-O-EOU	
	3259.63	32.81	3247.60	3226.83	312.24	MAS = 10.00 (m)	2400.00	2338.20				MinPt-O-SF	
	5980.17	85.25	5922.80	5894.92	107.22	OSF1.50	11040.00	7231.80				MinPt-O-SF	
	9274.65	106.79	9202.92	9167.86	132.24	OSF1.50	15300.20	7196.00				TD	
HSR-Wiedeman 15-20 GYRO 0' to 7527' - AB (Def Survey)													Pass
	2877.58	32.81	2875.77	2844.78	N/A	MAS = 10.00 (m)	0.00	0.00				Surface	
	2877.52	32.81	2875.64	2844.71	41951.59	MAS = 10.00 (m)	4.00	4.00				MinPt-O-SF	
	2877.19	32.81	2875.28	2844.39	28103.01	MAS = 10.00 (m)	50.00	50.00				MinPts	
	2877.22	32.81	2875.25	2844.41	18782.92	MAS = 10.00 (m)	70.00	70.00				MINPT-O-EOU	
	3206.79	32.81	3195.83	3173.98	342.41	MAS = 10.00 (m)	1900.00	1856.58				MinPt-O-SF	
	4570.83	57.28	4532.11	4513.55	123.10	OSF1.50	8300.00	7254.83				MinPt-CtCt	
	4570.95	57.66	4531.99	4513.29	122.28	OSF1.50	8330.00	7254.58				MINPT-O-EOU	
	4571.14	57.90	4532.00	4513.23	121.75	OSF1.50	8350.00	7254.41				MinPt-O-ADP	
	5447.31	95.57	5383.06	5351.74	86.93	OSF1.50	11260.00	7229.95				MinPt-O-SF	
	8362.79	115.00	8285.58	8247.78	110.60	OSF1.50	15300.20	7196.00				TD	
Wiedeman-PM J21-10 GYRO 0' to 7495' - AB (Def Survey)													Pass
	6730.74	32.81	6728.92	6697.93	N/A	MAS = 10.00 (m)	0.00	0.00				Surface	
	6730.67	32.81	6728.77	6697.85	86003.45	MAS = 10.00 (m)	4.00	4.00				MinPt-O-SF	
	6729.67	32.81	6727.55	6696.86	22267.33	MAS = 10.00 (m)	120.00	120.00				MinPts	
	6729.89	32.81	6727.14	6697.08	7207.97	MAS = 10.00 (m)	250.00	250.00				MINPT-O-EOU	
	6814.91	32.81	6802.32	6782.10	620.36	MAS = 10.00 (m)	2100.00	2049.23				MinPt-O-SF	
	6824.47	32.81	6811.85	6791.66	619.70	MAS = 10.00 (m)	2290.00	2232.24				MinPt-O-SF	
	6841.55	32.81	6828.55	6808.74	600.50	MAS = 10.00 (m)	2640.00	2569.38				MinPt-O-SF	
	6954.88	32.81	6936.48	6922.07	414.15	MAS = 10.00 (m)	4330.00	4197.26				MINPT-O-EOU	
	6954.95	32.81	6935.81	6922.14	396.70	MAS = 10.00 (m)	4470.00	4332.11				MinPts	
	6955.02	32.81	6935.77	6922.21	394.15	MAS = 10.00 (m)	4500.00	4361.01				MINPT-O-EOU	
	2965.79	180.39	2844.99	2785.40	24.87	OSF1.50	13780.00	7208.78				MinPt-CtCt	

Offset Trajectory	Separation			Allow Dev. (ft)	Sep. Fact.	Controlling Rule	Reference Trajectory		Risk Level			Alert	Status
	Ct-Ct (ft)	MAS (ft)	EOU (ft)				MD (ft)	TVD (ft)	Alert	Minor	Major		

2966.07	181.22	2844.72	2794.85	24.76	OSF1.50	13820.00	7208.44					MINPT-O-EOU	
2966.41	181.62	2844.79	2784.78	24.70	OSF1.50	13840.00	7208.27					MinPt-O-ADP	
3009.41	188.55	2883.18	2820.86	24.13	OSF1.50	14290.00	7204.49					MinPt-O-SF	
3332.83	189.82	3205.75	3143.01	26.55	OSF1.50	15300.20	7196.00					TD	

HSR-Wiedeman 9-20 GYRO 0' to 7473' - AB (Def Survey)													
2975.30	32.81	2973.49	2942.49	N/A	MAS = 10.00 (m)	0.00	0.00						Pass
2975.20	32.81	2973.28	2942.36	26694.39	MAS = 10.00 (m)	4.00	4.00						Surface
2973.10	32.81	2970.32	2940.30	3068.93	MAS = 10.00 (m)	240.00	240.00						MinPt-O-SF
2973.16	32.81	2970.28	2940.35	2784.07	MAS = 10.00 (m)	260.00	260.00						MinPts
3421.24	83.48	3365.05	3337.75	62.65	OSF1.50	9710.00	7242.98						MINPT-O-EOU
3421.46	84.24	3364.77	3337.22	62.08	OSF1.50	9750.00	7242.64						MinPt-CtCt
3421.75	84.62	3364.80	3337.13	61.80	OSF1.50	9770.00	7242.47						MINPT-O-EOU
3681.00	103.90	3611.21	3577.11	53.93	OSF1.50	11070.00	7231.55						MinPt-O-ADP
6549.56	111.33	6474.81	6438.24	89.52	OSF1.50	15300.20	7196.00						TD

Wiedeman PMJ 21-9 GYRO 0' to 7490' - AB (Def Survey)													
7951.79	32.81	7949.97	7918.98	N/A	MAS = 10.00 (m)	0.00	0.00						Pass
7951.73	32.81	7949.84	7918.92	116042.58	MAS = 10.00 (m)	4.00	4.00						Surface
7950.69	32.81	7947.97	7917.89	8759.70	MAS = 10.00 (m)	240.00	240.00						MinPt-O-SF
7950.87	32.81	7947.74	7918.06	6033.42	MAS = 10.00 (m)	320.00	319.96						MinPts
2984.89	209.74	2844.53	2775.15	21.50	OSF1.50	15020.00	7198.35						MINPT-O-EOU
2985.14	210.58	2844.22	2774.56	21.42	OSF1.50	15060.00	7198.02						MinPt-CtCt
2985.47	210.98	2844.28	2774.49	21.38	OSF1.50	15080.00	7197.85						MINPT-O-EOU
2997.87	214.80	2854.14	2783.07	21.09	OSF1.50	15300.20	7196.00						MinPt-O-ADP

UPRC 21-12H6 Blind 0' to 7502' - AB (Def Survey)													
4213.48	32.81	4211.67	4180.67	N/A	MAS = 10.00 (m)	0.00	0.00						Pass
4213.40	32.81	4211.49	4180.59	45452.10	MAS = 10.00 (m)	4.00	4.00						Surface
4212.52	32.81	4208.12	4179.71	1631.67	MAS = 10.00 (m)	200.00	200.00						MinPt-O-SF
4219.43	32.81	4201.03	4186.63	254.22	MAS = 10.00 (m)	550.00	549.13						MinPts
4227.89	36.81	4202.75	4191.09	181.14	OSF1.50	720.00	717.15						MINPT-O-EOU
3207.40	441.49	2912.54	2765.91	10.93	OSF1.50	11200.00	7230.47						MinPt-O-ADP
3207.43	441.54	2912.54	2765.89	10.93	OSF1.50	11210.00	7230.37						MinPt-CtCt
3209.09	441.96	2913.92	2767.13	10.93	OSF1.50	11300.00	7229.62						MinPts
5209.01	442.04	4913.78	4766.97	17.73	OSF1.50	15300.20	7196.00						MINPT-O-EOU

UPV 21-11H6 Blind 0' to 7440' - AB (Def Survey)													
5623.07	32.81	5621.26	5590.26	N/A	MAS = 10.00 (m)	0.00	0.00						Pass
5622.99	32.81	5621.09	5590.19	63876.85	MAS = 10.00 (m)	4.00	4.00						Surface
5621.94	32.81	5618.23	5589.13	2973.04	MAS = 10.00 (m)	200.00	200.00						MinPt-O-SF
5630.45	32.81	5609.83	5597.64	299.20	MAS = 10.00 (m)	630.00	628.39						MinPts
5639.80	41.28	5611.67	5598.52	214.28	OSF1.50	820.00	815.17						MINPT-O-EOU
3321.19	449.94	3020.65	2871.21	11.11	OSF1.50	12630.00	7218.44						MinPt-O-ADP
3324.39	450.07	3020.60	2871.11	11.10	OSF1.50	12650.00	7218.27						MinPt-CtCt
4259.43	450.90	3023.26	2873.49	11.09	OSF1.50	12780.00	7217.18						MinPts
	452.81	3957.02	3806.62	14.15	OSF1.50	15300.20	7196.00						MINPT-O-SF

HSR-Wiedeman 16-20 GYRO 0' to 7501' - AB (Def Survey)													
3678.88	32.81	3677.07	3646.07	N/A	MAS = 10.00 (m)	0.00	0.00						Pass
3678.86	32.81	3677.02	3646.05	156831.53	MAS = 10.00 (m)	4.00	4.00						Surface
3678.43	32.81	3675.73	3645.62	4181.91	MAS = 10.00 (m)	210.00	210.00						MinPt-O-SF
3678.48	32.81	3675.69	3645.68	3728.63	MAS = 10.00 (m)	230.00	230.00						MinPts
3990.39	32.81	3978.47	3957.58	386.69	MAS = 10.00 (m)	2180.00	2126.29						MINPT-O-EOU
4521.63	85.59	4464.06	4436.06	80.72	OSF1.50	9800.00	7242.22						MinPt-O-SF
4522.09	86.78	4463.89	4435.30	79.60	OSF1.50	9860.00	7241.72						MinPt-CtCt
4522.60	87.38	4463.82	4435.22	79.06	OSF1.50	9890.00	7241.47						MINPT-O-EOU
5025.02	120.02	4944.47	4905.00	63.63	OSF1.50	11990.00	7223.82						MinPt-O-ADP
7120.99	134.86	7030.54	6986.12	80.14	OSF1.50	15300.20	7196.00						MinPt-O-SF

Bensler J 29-27D GYRO 0' to 7588' - PR (Def Survey)													
4402.99	32.81	4401.18	4370.18	N/A	MAS = 10.00 (m)	0.00	0.00						Pass
4402.93	32.81	4401.06	4370.12	71142.43	MAS = 10.00 (m)	4.00	4.00						Surface
4400.28	32.81	4397.45	4367.46	4290.36	MAS = 10.00 (m)	230.00	230.00						MinPt-O-SF
4400.33	32.81	4397.39	4367.53	3882.12	MAS = 10.00 (m)	250.00	250.00						MinPts
4521.48	32.81	4511.57	4488.67	558.33	MAS = 10.00 (m)	1090.00	1076.36						MINPT-O-EOU
5213.84	50.90	5179.37	5162.94	158.61	OSF1.50	6200.00	5998.52						MinPt-O-SF
5371.33	53.40	5335.19	5317.93	156.52	OSF1.50	6800.00	6576.46						MinPt-O-SF
5251.36	72.87	5201.91	5178.16	110.49	OSF1.50	9010.00	7248.86						MinPt-CtCt
5251.36	73.86	5201.59	5177.50	108.98	OSF1.50	9070.00	7248.36						MINPT-O-EOU
5251.79	74.35	5201.68	5177.43	108.25	OSF1.50	9100.00	7248.11						MinPt-O-ADP
6154.11	120.21	6073.43	6033.90	77.81	OSF1.50	12220.00	7221.89						MinPt-O-SF
8193.37	138.78	8100.31	8054.58	89.57	OSF1.50	15300.20	7196.00						TD

A.J. Gold 22-13 Blind 0' to 7426' - PR (Def Survey)													
9360.20	32.81	9358.39	9327.39	N/A	MAS = 10.00 (m)	0.00	0.00						Pass
9360.13	32.81	9358.24	9327.32	119107.61	MAS = 10.00 (m)	4.00	4.00						Surface
9358.73	32.81	9355.96	9325.92	9790.51	MAS = 10.00 (m)	200.00	200.00						MinPt-O-SF
9367.03	32.81	9348.88	9334.22	573.32	MAS = 10.00 (m)	620.00	618.50						MinPts
9376.89	38.15	9350.85	9338.74	386.96	OSF1.50	820.00	815.17						MINPT-O-EOU
4452.24	472.06	4137.00	3980.18	14.19	OSF1.50	15300.20	7196.00						MinPt-O-ADP

UPRC 21-14H6 GYRO 0' to 7418' - AB (Def Survey)													
5839.59	32.81	5837.77	5806.78	N/A	MAS = 10.00 (m)	0.00	0.00						Pass
5839.50	32.81	5837.59	5806.69	61050.09	MAS = 10.00 (m)	4.00	4.00						Surface
5838.18	32.81	5835.61	5805.34	7971.70	MAS = 10.00 (m)	210.00	210.00						MinPt-O-SF
5838.22	32.81	5835.53	5805.42	6634.53	MAS = 10.00 (m)	240.00	240.00						MinPts
6004.63	32.81	5992.56	5971.82	574.09	MAS = 10.00 (m)	1900.00	1856.58						MINPT-O-EOU
6035.18	32.81	6023.06	6002.37	573.86	MAS = 10.00 (m)	2110.00	2058.86						MinPt-O-SF
4538.36	148.28	4438.97	4390.08	46.39	OSF1.50	12440.00	7220.04						MinPt-CtCt
4538.77	149.57	4438.52	4389.20	46.00	OSF1.50	12500.00	7219.53						MINPT-O-EOU
4539.27	150.21	4438.60	4389.06	45.80	OSF1.50	12530.00	7219.28						MinPt-O-ADP
4761.38	171.91	4646.24	4589.47	41.92	OSF1.50	13880.00	7207.94						MinPt-O-SF
5364.25	180.44	5243.42	5183.81	44.98	OSF1.50	15300.20	7196.00						TD

Calvin 1 Blind 0' to 7355' - PR (Def Survey)													
													Pass

Offset Trajectory	Separation			Allow Dev. (ft)	Sep. Fact.	Controlling Rule	Reference Trajectory		Risk Level			Alert	Status
	Ct-Ct (ft)	MAS (ft)	EOU (ft)				MD (ft)	TVD (ft)	Alert	Minor	Major		
8393.44	32.81	8391.63	8360.63	N/A	MAS = 10.00 (m)	0.00	0.00					Surface	
8393.37	32.81	8391.48	8360.56	105344.01	MAS = 10.00 (m)	4.00	4.00					MinPt-O-SF	
8392.08	32.81	8389.06	8359.27	6982.34	MAS = 10.00 (m)	200.00	200.00					MinPts	
8399.06	32.81	8363.07	8366.25	592.14	MAS = 10.00 (m)	550.00	549.13					MINPT-O-EOU	
4880.69	471.94	4265.52	4108.74	14.60	OSF1.50	15140.00	7197.35					MinPt-CtCt	
4580.76	472.24	4265.40	4108.52	14.59	OSF1.50	15170.00	7197.09					MINPT-O-EOU	
4580.92	472.43	4265.43	4108.48	14.59	OSF1.50	15190.00	7196.93					MinPt-O-ADP	
4583.37	473.49	4267.18	4109.88	14.58	OSF1.50	15300.20	7196.00					MinPt-O-SF	

Wiedeman 21-15H6 GYRO 0' to 7491' - AB (Def Survey) Pass

7066.99	32.81	7065.18	7034.18	N/A	MAS = 10.00 (m)	0.00	0.00					Surface
7066.91	32.81	7065.01	7034.10	80279.02	MAS = 10.00 (m)	4.00	4.00					MinPt-O-SF
7065.53	32.81	7062.98	7032.72	9567.01	MAS = 10.00 (m)	210.00	210.00					MinPts
7065.60	32.81	7062.86	7032.80	7607.27	MAS = 10.00 (m)	250.00	250.00					MINPT-O-EOU
7198.54	32.81	7186.51	7165.73	689.94	MAS = 10.00 (m)	1900.00	1856.58					MinPt-O-SF
7849.27	36.58	7824.37	7812.72	336.84	OSF1.50	5700.00	5516.90					MinPts
4607.82	183.13	4485.19	4424.69	38.06	OSF1.50	13860.00	7208.10					MinPt-CtCt
4608.39	184.71	4484.71	4423.68	37.74	OSF1.50	13930.00	7207.51					MINPT-O-EOU
4608.96	185.38	4484.84	4423.58	37.61	OSF1.50	13960.00	7207.26					MinPt-O-ADP
4780.35	205.03	4643.13	4575.32	35.24	OSF1.50	15130.00	7197.43					MinPt-O-SF
4828.45	206.83	4690.03	4621.62	35.28	OSF1.50	15300.20	7196.00					TD

UPRC 21-13H6 GYRO 0' to 7440' - AB (Def Survey) Pass

4720.96	32.81	4719.15	4688.16	N/A	MAS = 10.00 (m)	0.00	0.00					Surface
4720.88	32.81	4718.97	4688.07	49111.99	MAS = 10.00 (m)	4.00	4.00					MinPt-O-SF
4719.77	32.81	4717.70	4686.97	18298.32	MAS = 10.00 (m)	110.00	110.00					MinPts
4719.89	32.81	4717.34	4687.06	6434.66	MAS = 10.00 (m)	210.00	210.00					MINPT-O-EOU
5061.77	32.81	5048.76	5028.96	443.94	MAS = 10.00 (m)	2540.00	2473.05					MinPt-O-SF
5072.07	32.81	5059.02	5039.26	442.85	MAS = 10.00 (m)	2600.00	2530.85					MinPt-O-SF
4728.24	112.33	4652.82	4615.91	64.03	OSF1.50	10970.00	7232.39					MinPt-CtCt
4728.74	113.81	4652.33	4614.93	63.19	OSF1.50	11040.00	7231.80					MINPT-O-EOU
4729.27	114.44	4652.44	4614.83	62.85	OSF1.50	11070.00	7231.55					MinPt-O-EOU
5117.81	144.32	5021.07	4973.50	53.77	OSF1.50	12930.00	7215.92					MinPt-O-ADP
6410.36	156.83	6305.27	6253.53	61.93	OSF1.50	15300.20	7196.00					TD