



PDC Energy

Schlumberger

Rev 2

Borehole:	Well:	Field:	Structure:
Original Hole	Stugart 20N	CO, Weld County (NAD 83 NZ) - SRC	PDC Energy 20-05N-66W (Stugart State 6-20 Pad)

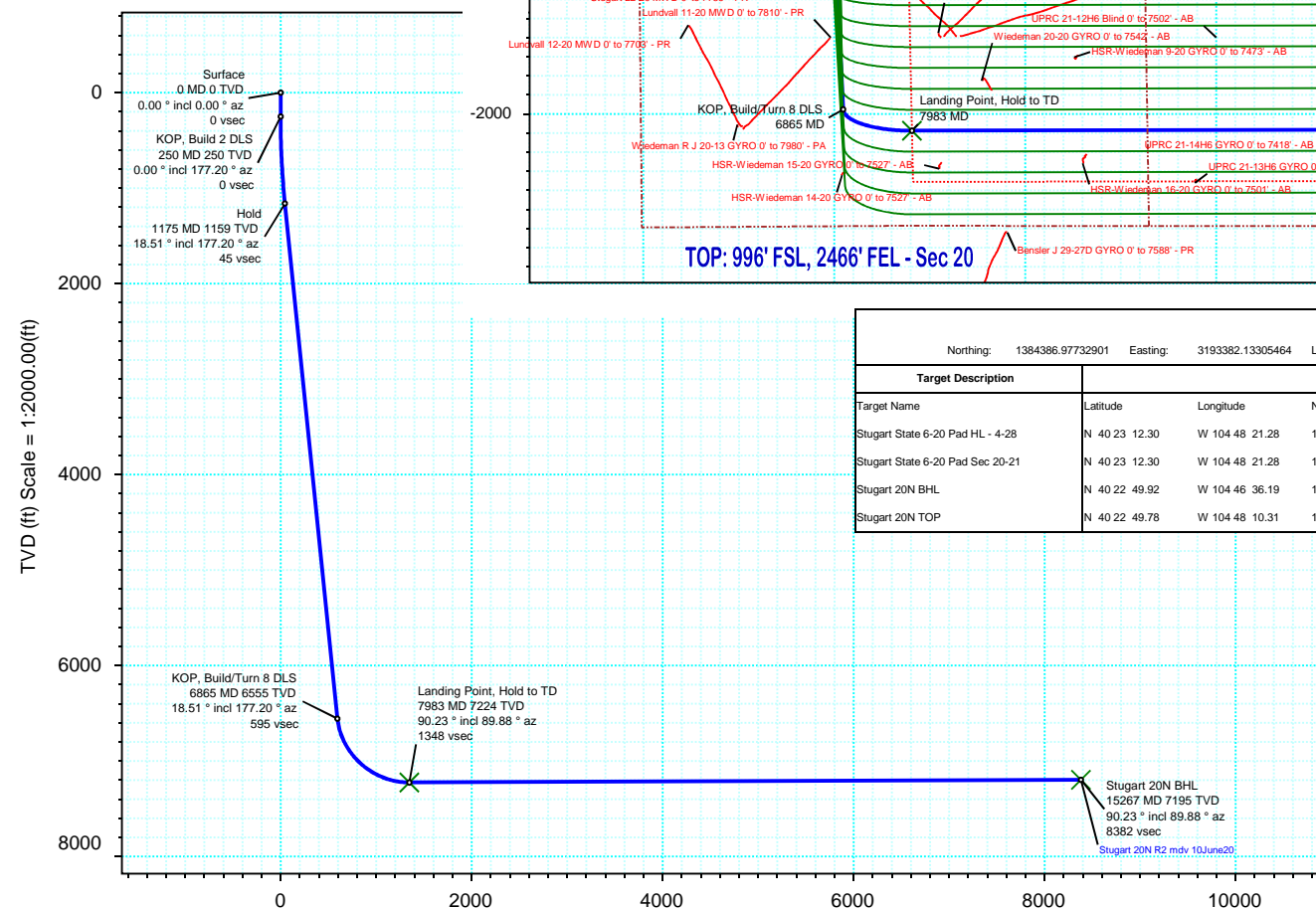
Gravity & Magnetic Parameters		Surface Location NAD83 Colorado State Plane, Northern Zone, US Feet			Miscellaneous	
Model:	HDGM 2020	Dip:	66.728°	Date:	17-Jun-2020	Lat: N 40 23 11.28
MagDec:	8.13°	FS:	52099.551nT	Gravity FS:	999.013mgN (9.80665 Based)	Northing: 1384386.98ftUS
		Lon: W 104 48 20.83		Easting: 3193382.13ftUS		Grid Conv: 0.4486°
				Scale Fact: 0.99995964		Slot: Stugart 20N
						TVD Ref: KB 4ft(4949ft above MSL)
						Plan: Stugart 20N R2 mdy 10June20

Proposal

EW (ft) Scale = 1:2000.00(ft)



True North  
Tot Corr (M->T 8.130°)  
Mag Dec (8.130°)  
Grid Conv (0.449°)



Vertical Section (ft) Azim = 104.94° Scale = 1:2000.00(ft) Origin = 0N/-S, 0E/-W

Surface Location														
Northing:		1384386.97732901	Easting:		3193382.13305464	Latitude:		N 40 23 11.28	Longitude:		W 104 48 20.83	VSec Azimuth:		104.94
Target Description		Grid Coord								Local Coord				
Target Name		Latitude	Longitude	Northing	Easting	TVD	VSec	N(+)/S(-)		E(+)/W(-)				
Stugart State 6-20 Pad HL - 4-28		N 40 23 12.30	W 104 48 21.28	1384490.53	3193346.78	4949.00	-60.14	103.83		-34.54				
Stugart State 6-20 Pad Sec 20-21		N 40 23 12.30	W 104 48 21.28	1384490.53	3193346.78	4949.00	-60.14	103.83		-34.54				
Stugart 20N BHL		N 40 22 49.92	W 104 46 36.19	1382290.07	3201497.04	7195.00	8381.81	-2160.47		8098.59				
Stugart 20N TOP		N 40 22 49.78	W 104 48 10.31	1382218.21	3194213.80	7224.00	1347.87	-2175.30		814.70				

Critical Points							
Critical Point	MD	INCL	AZIM	TVD	VSEC	N(+)/S(-)	E(+)/W(-) DLS
Surface	0.00	0.00	0.00	0.00	0.00	0.00	0.00
KOP, Build 2 DLS	250.00	0.00	177.20	250.00	0.00	0.00	0.00
Hold	1175.44	18.51	177.20	1159.43	45.14	-148.01	7.23 2.00
KOP, Build/Turn 8 DLS	6865.48	18.51	177.20	6555.15	595.38	-1952.16	95.42 0.00
Landing Point, Hold to TD	7982.55	90.23	89.88	7224.00	1347.87	-2175.30	814.70 8.00
Stugart 20N BHL	15266.50	90.23	89.88	7195.00	8381.81	-2160.47	8098.59 0.00

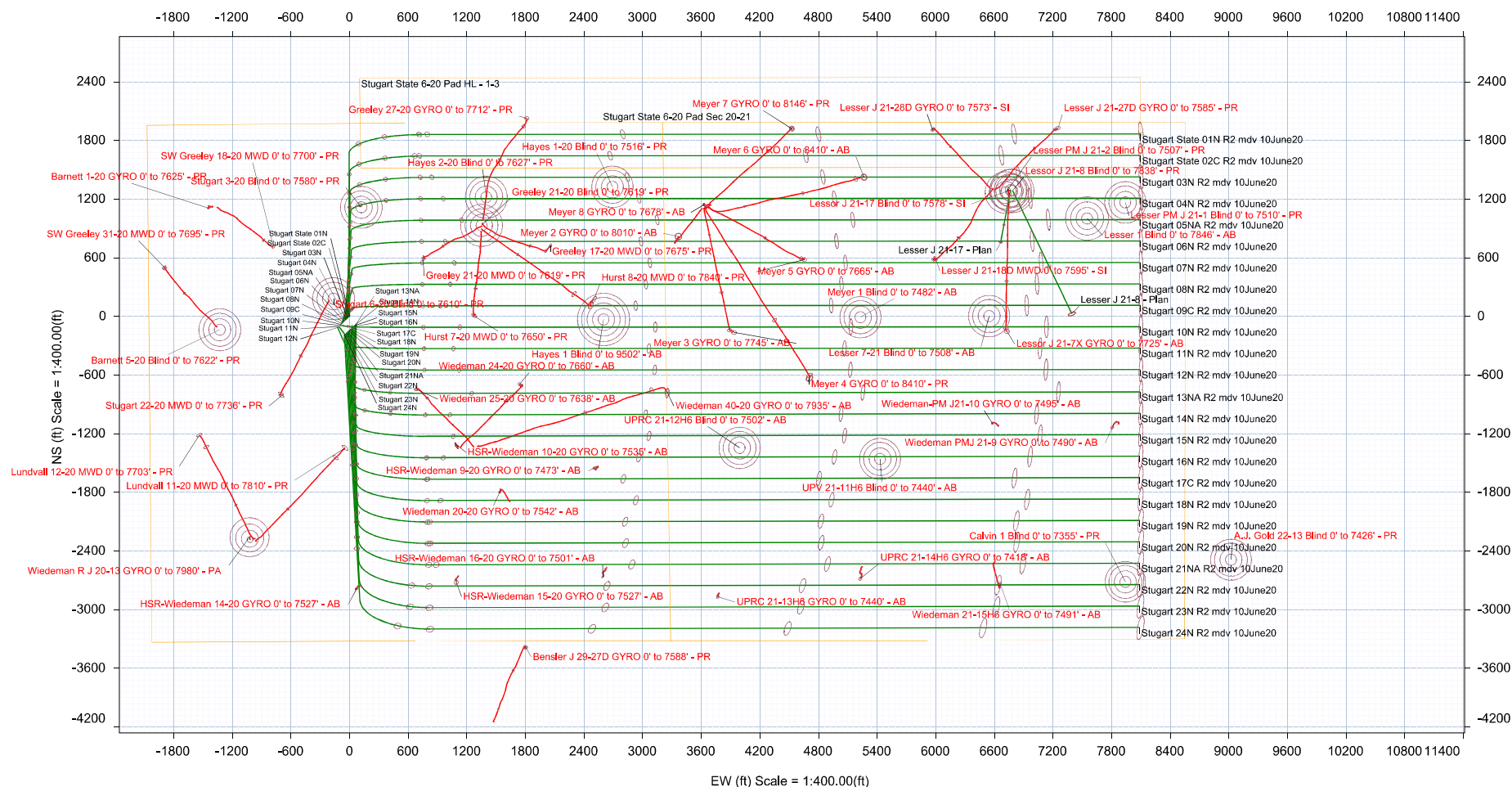




True North  
Tot Corr (M->T 8.129°)  
Mag Dec (8.129°)  
Grid Conv (0.449°)

Borehole:		Well:		Field:		Structure:	
Original Hole		Stugart State 01N		CO, Weld County (NAD 83 NZ) - SRC		PDC Energy 20-05N-66W (Stugart State 6-20 Pad)	
Gravity & Magnetic Parameters				Surface Location		Miscellaneous	
Mode:	HDMG 2020	Dip:	66.728°	Date:	17-Jun-2020	Lat:	N 40 23 12.71
MagDec:	8.129°	FS:	52099.711nT	Gravity FS:	999.013man (9.80665 Based)	Northing:	1384531.677HUS
						Grid Conv:	0.4486°
						Scale Fact:	0.99995966
						Lon:	W 104 48 20.71
						Easting:	3193390.477HUS
						Plan:	Stugart State 01N R2 mdy 10June20
						Slot:	Stugart State 01N TVD Ref: KB 4ft(4048ft above MSL)

EOU Computation Based On 3-D 95% Confidence 2.79548 sigma



## Stugart 20N R2 mdv 10June20 Proposal Geodetic Report

(Def Plan)

**Report Date:** June 19, 2020 - 11:06 AM  
**Client:** PDC Energy  
**Field:** CO, Weld County (NAD 83 NZ) - SRC  
**Structure / Slot:** PDC Energy 20-05N-66W (Stugart State 6-20 Pad) / Stugart 20N  
**Well:** Stugart 20N  
**Borehole:** Original Hole  
**UWI / API#:** Unknown / Unknown  
**Survey Name:** Stugart 20N R2 mdv 10June20  
**Survey Date:** September 25, 2019  
**Tort / AHD / DDI / ERD Ratio:** 107.874 ° / 10029.494 ft / 6.359 / 1.388  
**Coordinate Reference System:** NAD83 Colorado State Plane, Northern Zone, US Feet  
**Location Lat / Long:** N 40° 23' 11.27760", W 104° 48' 20.83320"  
**Location Grid N/E Y/X:** N 1384386.977 ftUS, E 3193382.133 ftUS  
**CRS Grid Convergence Angle:** 0.4486 °  
**Grid Scale Factor:** 0.99995964  
**Version / Patch:** 2.10.811.0

**Survey / DLS Computation:** Minimum Curvature / Lubinski  
**Vertical Section Azimuth:** 104.937 ° (True North)  
**Vertical Section Origin:** 0.000 ft, 0.000 ft  
**TVD Reference Datum:** KB 4ft  
**TVD Reference Elevation:** 4949.000 ft above MSL  
**Seabed / Ground Elevation:** 4945.000 ft above MSL  
**Magnetic Declination:** 8.130 °  
**Total Gravity Field Strength:** 999.0131mgn (9.80665 Based)  
**Gravity Model:** GARM  
**Total Magnetic Field Strength:** 52099.551 nT  
**Magnetic Dip Angle:** 66.728 °  
**Declination Date:** June 17, 2020  
**Magnetic Declination Model:** HDGM 2020  
**North Reference:** True North  
**Grid Convergence Used:** 0.0000 °  
**Total Corr Mag North->True North:** 8.1295 °  
**Local Coord Referenced To:** Well Head

Comments	MD (ft)	Incl (°)	Azim True (°)	TVD (ft)	VSEC (ft)	NS (ft)	EW (ft)	DLS (°/100ft)	Northing (ftUS)	Easting (ftUS)	Latitude (°)	Longitude (°)
Surface	0.00	0.00	0.00	0.00	0.00	0.00	0.00	N/A	1384386.98	3193382.13	40.386466	-104.805787
	100.00	0.00	177.20	100.00	0.00	0.00	0.00	0.00	1384386.98	3193382.13	40.386466	-104.805787
	200.00	0.00	177.20	200.00	0.00	0.00	0.00	0.00	1384386.98	3193382.13	40.386466	-104.805787
KOP, Build 2 DLS	250.00	0.00	177.20	250.00	0.00	0.00	0.00	0.00	1384386.98	3193382.13	40.386466	-104.805787
	300.00	1.00	177.20	300.00	0.13	-0.44	0.02	2.00	1384386.54	3193382.16	40.386465	-104.805787
	400.00	3.00	177.20	399.93	1.20	-3.92	0.19	2.00	1384383.06	3193382.36	40.386455	-104.805786
	500.00	5.00	177.20	499.68	3.32	-10.89	0.53	2.00	1384376.09	3193382.75	40.386436	-104.805785
	600.00	7.00	177.20	599.13	6.50	-21.33	1.04	2.00	1384365.66	3193383.34	40.386407	-104.805783
	700.00	9.00	177.20	698.15	10.74	-35.23	1.72	2.00	1384351.77	3193384.13	40.386369	-104.805781
	800.00	11.00	177.20	796.63	16.03	-52.57	2.57	2.00	1384334.43	3193385.11	40.386322	-104.805778
	900.00	13.00	177.20	894.44	22.37	-73.34	3.58	2.00	1384313.67	3193386.29	40.386265	-104.805774
	1000.00	15.00	177.20	991.46	29.74	-97.50	4.77	2.00	1384289.52	3193387.66	40.386198	-104.805770
	1100.00	17.00	177.20	1087.58	38.13	-125.03	6.11	2.00	1384262.01	3193389.22	40.386123	-104.805765
	1175.44	18.51	177.20	1159.43	45.14	-148.01	7.23	2.00	1384239.04	3193390.53	40.386060	-104.805761
	1200.00	18.51	177.20	1182.72	47.51	-155.79	7.62	0.00	1384231.26	3193390.97	40.386038	-104.805760
	1300.00	18.51	177.20	1277.55	57.18	-187.50	9.17	0.00	1384199.56	3193392.77	40.385951	-104.805754
	1400.00	18.51	177.20	1372.37	66.85	-219.21	10.72	0.00	1384167.87	3193394.56	40.385864	-104.805749
	1500.00	18.51	177.20	1467.20	76.53	-250.91	12.26	0.00	1384136.18	3193396.36	40.385777	-104.805743
	1600.00	18.51	177.20	1562.03	86.20	-282.62	13.81	0.00	1384104.49	3193398.16	40.385690	-104.805737
	1700.00	18.51	177.20	1656.86	95.87	-314.33	15.36	0.00	1384072.79	3193399.96	40.385603	-104.805732
	1800.00	18.51	177.20	1751.68	105.54	-346.04	16.91	0.00	1384041.10	3193401.76	40.385516	-104.805726
	1900.00	18.51	177.20	1846.51	115.21	-377.74	18.46	0.00	1384009.41	3193403.55	40.385429	-104.805721
	2000.00	18.51	177.20	1941.34	124.88	-409.45	20.01	0.00	1383977.71	3193405.35	40.385342	-104.805715
	2100.00	18.51	177.20	2036.16	134.55	-441.16	21.56	0.00	1383946.02	3193407.15	40.385255	-104.805710
	2200.00	18.51	177.20	2130.99	144.22	-472.86	23.11	0.00	1383914.33	3193408.95	40.385168	-104.805704
	2300.00	18.51	177.20	2225.82	153.89	-504.57	24.66	0.00	1383882.64	3193410.75	40.385081	-104.805698
	2400.00	18.51	177.20	2320.65	163.56	-536.28	26.21	0.00	1383850.94	3193412.54	40.384994	-104.805693
	2500.00	18.51	177.20	2415.47	173.23	-567.99	27.76	0.00	1383819.25	3193414.34	40.384907	-104.805687
	2600.00	18.51	177.20	2510.30	182.90	-599.69	29.31	0.00	1383787.56	3193416.14	40.384820	-104.805682
	2700.00	18.51	177.20	2605.13	192.57	-631.40	30.86	0.00	1383755.86	3193417.94	40.384733	-104.805676
	2800.00	18.51	177.20	2699.96	202.24	-663.11	32.41	0.00	1383724.17	3193419.74	40.384646	-104.805671
	2900.00	18.51	177.20	2794.78	211.91	-694.82	33.96	0.00	1383692.48	3193421.53	40.384559	-104.805665
	3000.00	18.51	177.20	2889.61	221.58	-726.52	35.51	0.00	1383660.79	3193423.33	40.384472	-104.805660
	3100.00	18.51	177.20	2984.44	231.25	-758.23	37.06	0.00	1383629.09	3193425.13	40.384385	-104.805654
	3200.00	18.51	177.20	3079.27	240.92	-789.94	38.61	0.00	1383597.40	3193426.93	40.384298	-104.805648
	3300.00	18.51	177.20	3174.09	250.59	-821.64	40.16	0.00	1383565.71	3193428.73	40.384211	-104.805643
	3400.00	18.51	177.20	3268.92	260.26	-853.35	41.71	0.00	1383534.01	3193430.52	40.384124	-104.805637
	3500.00	18.51	177.20	3363.75	269.93	-885.06	43.26	0.00	1383502.32	3193432.32	40.384037	-104.805632
	3600.00	18.51	177.20	3458.58	279.60	-916.77	44.81	0.00	1383470.63	3193434.12	40.383950	-104.805626
	3700.00	18.51	177.20	3553.40	289.27	-948.47	46.36	0.00	1383438.94	3193435.92	40.383863	-104.805621
	3800.00	18.51	177.20	3648.23	298.94	-980.18	47.91	0.00	1383407.24	3193437.71	40.383775	-104.805615
	3900.00	18.51	177.20	3743.06	308.61	-1011.89	49.46	0.00	1383375.55	3193439.51	40.383688	-104.805609
	4000.00	18.51	177.20	3837.89	318.28	-1043.60	51.01	0.00	1383343.86	3193441.31	40.383601	-104.805604
	4100.00	18.51	177.20	3932.71	327.95	-1075.30	52.56	0.00	1383312.16	3193443.11	40.383514	-104.805598
	4200.00	18.51	177.20	4027.54	337.62	-1107.01	54.11	0.00	1383280.47	3193444.91	40.383427	-104.805593
	4300.00	18.51	177.20	4122.37	347.29	-1138.72	55.66	0.00	1383248.78	3193446.70	40.383340	-104.805587
	4400.00	18.51	177.20	4217.20	356.96	-1170.42	57.21	0.00	1383217.09	3193448.50	40.383253	-104.805582
	4500.00	18.51	177.20	4312.02	366.63	-1202.13	58.76	0.00	1383185.39	3193450.30	40.383166	-104.805576
	4600.00	18.51	177.20	4406.85	376.30	-1233.84	60.31	0.00	1383153.70	3193452.10	40.383079	-104.805571
	4700.00	18.51	177.20	4501.68	385.97	-1265.55	61.86	0.00	1383122.01	3193453.90	40.382992	-104.805565
	4800.00	18.51	177.20	4596.51	395.64	-1297.25	63.41	0.00	1383090.32	3193455.69	40.382905	-104.805559
	4900.00	18.51	177.20	4691.33	405.31	-1328.96	64.96	0.00	1383058.62	3193457.49	40.382818	-104.805554
	5000.00	18.51	177.20	4786.16	414.98	-1360.67	66.51	0.00	1383026.93	3193459.29	40.382731	-104.805548
	5100.00	18.51	177.20	4880.99	424.65	-1392.37	68.06	0.00	1382995.24	3193461.09	40.382644	-104.805543
	5200.00	18.51	177.20	4975.82	434.33	-1424.08	69.61	0.00	1382963.54	3193462.89	40.382557	-104.805537
	5300.00	18.51	177.20	5070.64	444.00	-1455.79	71.16	0.00	1382931.85	3193464.68	40.382470	-104.805532
	5400.00	18.51	177.20	5165.47	453.67	-1487.50	72.71	0.00	1382900.16	3193466.48	40.382383	-104.805526
	5500.00	18.51	177.20	5260.30	463.34	-1519.20	74.26	0.00	1382868.47	3193468.28	40.382296	-104.805520
	5600.00	18.51	177.20	5355.13	473.01	-1550.91	75.81	0.00	1382836.77	3193470.08	40.382209	-104.805515
	5700.00	18.51	177.20	5449.95	482.68	-1582.62	77.36	0.00	1382805.08	3193471.88	40.382122	-104.805509
	5800.00	18.51	177.20	5544.78	492.35	-1614.33	78.91	0.00	1382773.39	3193473.67	40.382035	-104.805504
	5900.00	18.51	177.20	5639.61	502.02	-1646.03	80.46	0.00	1382741.69	3193475.47	40.381948	-104.805498
	6000.00	18.51	177.20	5734.44	511.69	-1677.74	82.01	0.00	1382710.00	3193477.27	40.381861	-104.805493
	6100.00	18.51	177.20	5829.26	521.36	-1709.45	83.56	0.00	1382678.31	3193479.07	40.381774	-104.805487
	6200.00	18.51	177.20	5924.09	531.03	-1741.15	85.11	0.00	1382646.62	3193480.87	40.381687	-104.805482
	6300.00	18.51	177.20	6018.92	540.70	-1772.86	86.66	0.00	1382614.92	3193482.66	40.381600	-104.805476
	6400.00	18.51	177.20	6113.75	550.37	-1804.57	88.21	0.00	1382583.23	3193484.46	40.381513	-104.805470
	6500.00	18.51	177.20	6208.57	560.04	-1836.28	89.76	0.00	1382551.54	3193486.26	40.381426	-104.805465
	6600.00	18.51	177.20	6303.40	569.71	-1867.98	91.31	0.00	1382519.84	3193488.06	40.381339	-104.805459
	6700.00	18.51	177.20	6398.23	579.38	-1899.69	92.86	0.00	1382488.15	3193489.86	40.381252	-104.805454
	6800.00	18.51	177.20	6493.06	589.05	-1931.40	94.41	0.00	1382456.46	3193491.65	40.381164	-104.805448
KOP, Build/Turn 8 DLS	6865.48	18.51	177.20	6555.15	595.38	-1952.16	95.42	0.00	1382435.71	3193492.83	40.381107	-104.805444
	6900.00	18.83	168.63	6587.86	599.52	-1963.10	96.79	8.00	1382424.78	3193494.28	40.381077	-104.805440
	7000.00	21.74	146.96	6681.78	620.46	-1994.49	110.09	8.00	138231			

Comments	MD (ft)	Incl (°)	Azim True (°)	TVD (ft)	VSEC (ft)	NS (ft)	EW (ft)	DLS (°/100ft)	Northing (ftUS)	Easting (ftUS)	Latitude (°)	Longitude (°)
	7300.00	39.58	113.82	6940.52	758.17	-2080.93	229.55	8.00	1382308.00	3193627.96	40.380754	-104.804963
	7400.00	46.66	108.36	7013.50	826.05	-2105.28	293.31	8.00	1382284.14	3193691.90	40.380687	-104.804734
	7500.00	53.94	104.05	7077.35	902.89	-2126.58	367.16	8.00	1382263.42	3193765.91	40.380629	-104.804469
	7600.00	61.35	100.48	7130.84	987.19	-2144.41	449.65	8.00	1382246.24	3193848.54	40.380580	-104.804173
	7700.00	68.85	97.39	7172.92	1077.31	-2158.42	539.19	8.00	1382232.94	3193938.18	40.380541	-104.803852
	7800.00	76.39	94.60	7202.77	1171.50	-2168.33	634.02	8.00	1382223.77	3194033.08	40.380514	-104.803511
	7900.00	83.97	91.99	7219.82	1267.92	-2173.96	732.32	8.00	1382218.91	3194131.41	40.380499	-104.803158
Landing Point, Hold to TD	7982.55	90.23	89.88	7224.00	1347.87	-2175.30	814.70	8.00	1382218.21	3194213.80	40.380495	-104.802863
	8000.00	90.23	89.88	7223.93	1364.72	-2175.27	832.15	0.00	1382218.38	3194231.25	40.380495	-104.802800
	8100.00	90.23	89.88	7223.53	1461.29	-2175.06	932.15	0.00	1382219.37	3194331.24	40.380496	-104.802441
	8200.00	90.23	89.88	7223.13	1557.86	-2174.86	1032.15	0.00	1382220.36	3194431.23	40.380496	-104.802082
	8300.00	90.23	89.88	7222.74	1654.43	-2174.66	1132.15	0.00	1382221.34	3194531.22	40.380497	-104.801723
	8400.00	90.23	89.88	7222.34	1750.99	-2174.45	1232.15	0.00	1382222.33	3194631.21	40.380497	-104.801364
	8500.00	90.23	89.88	7221.94	1847.56	-2174.25	1332.15	0.00	1382223.32	3194731.20	40.380498	-104.801005
	8600.00	90.23	89.88	7221.54	1944.13	-2174.05	1432.15	0.00	1382224.30	3194831.19	40.380498	-104.800647
	8700.00	90.23	89.88	7221.14	2040.70	-2173.84	1532.15	0.00	1382225.29	3194931.19	40.380499	-104.800288
	8800.00	90.23	89.88	7220.75	2137.26	-2173.64	1632.15	0.00	1382226.28	3195031.18	40.380499	-104.799929
	8900.00	90.23	89.88	7220.35	2233.83	-2173.43	1732.14	0.00	1382227.26	3195131.17	40.380500	-104.799570
	9000.00	90.23	89.88	7219.95	2330.40	-2173.23	1832.14	0.00	1382228.25	3195231.16	40.380500	-104.799211
	9100.00	90.23	89.88	7219.55	2426.97	-2173.03	1932.14	0.00	1382229.23	3195331.15	40.380501	-104.798852
	9200.00	90.23	89.88	7219.15	2523.53	-2172.82	2032.14	0.00	1382230.22	3195431.14	40.380502	-104.798493
	9300.00	90.23	89.88	7218.75	2620.10	-2172.62	2132.14	0.00	1382231.21	3195531.13	40.380502	-104.798134
	9400.00	90.23	89.88	7218.36	2716.67	-2172.42	2232.14	0.00	1382232.19	3195631.12	40.380503	-104.797775
	9500.00	90.23	89.88	7217.96	2813.24	-2172.21	2332.14	0.00	1382233.18	3195731.11	40.380503	-104.797416
	9600.00	90.23	89.88	7217.56	2909.80	-2172.01	2432.14	0.00	1382234.17	3195831.10	40.380504	-104.797057
	9700.00	90.23	89.88	7217.16	3006.37	-2171.80	2532.14	0.00	1382235.15	3195931.09	40.380504	-104.796698
	9800.00	90.23	89.88	7216.76	3102.94	-2171.60	2632.14	0.00	1382236.14	3196031.08	40.380505	-104.796339
	9900.00	90.23	89.88	7216.37	3199.51	-2171.40	2732.13	0.00	1382237.13	3196131.07	40.380505	-104.795980
	10000.00	90.23	89.88	7215.97	3296.07	-2171.19	2832.13	0.00	1382238.11	3196231.06	40.380506	-104.795621
	10100.00	90.23	89.88	7215.57	3392.64	-2170.99	2932.13	0.00	1382239.10	3196331.05	40.380506	-104.795262
	10200.00	90.23	89.88	7215.17	3489.21	-2170.79	3032.13	0.00	1382240.09	3196431.04	40.380507	-104.794904
	10300.00	90.23	89.88	7214.77	3585.78	-2170.58	3132.13	0.00	1382241.07	3196531.03	40.380507	-104.794545
	10400.00	90.23	89.88	7214.38	3682.35	-2170.38	3232.13	0.00	1382242.06	3196631.02	40.380508	-104.794186
	10500.00	90.23	89.88	7213.98	3778.91	-2170.18	3332.13	0.00	1382243.05	3196731.01	40.380508	-104.793827
	10600.00	90.23	89.88	7213.58	3875.48	-2169.97	3432.13	0.00	1382244.03	3196831.00	40.380509	-104.793468
	10700.00	90.23	89.88	7213.18	3972.05	-2169.77	3532.13	0.00	1382245.02	3196930.99	40.380509	-104.793109
	10800.00	90.23	89.88	7212.78	4068.62	-2169.56	3632.13	0.00	1382246.00	3197030.98	40.380510	-104.792750
	10900.00	90.23	89.88	7212.38	4165.18	-2169.36	3732.12	0.00	1382246.99	3197130.97	40.380511	-104.792391
	11000.00	90.23	89.88	7211.99	4261.75	-2169.16	3832.12	0.00	1382247.98	3197230.96	40.380511	-104.792032
	11100.00	90.23	89.88	7211.59	4358.32	-2168.95	3932.12	0.00	1382248.96	3197330.95	40.380512	-104.791673
	11200.00	90.23	89.88	7211.19	4454.89	-2168.75	4032.12	0.00	1382249.95	3197430.94	40.380512	-104.791314
	11300.00	90.23	89.88	7210.79	4551.45	-2168.55	4132.12	0.00	1382250.94	3197530.93	40.380513	-104.790955
	11400.00	90.23	89.88	7210.39	4648.02	-2168.34	4232.12	0.00	1382251.92	3197630.92	40.380513	-104.790596
	11500.00	90.23	89.88	7210.00	4744.59	-2168.14	4332.12	0.00	1382252.91	3197730.91	40.380514	-104.790237
	11600.00	90.23	89.88	7209.60	4841.16	-2167.94	4432.12	0.00	1382253.90	3197830.90	40.380514	-104.789878
	11700.00	90.23	89.88	7209.20	4937.72	-2167.73	4532.12	0.00	1382254.88	3197930.89	40.380515	-104.789519
	11800.00	90.23	89.88	7208.80	5034.29	-2167.53	4632.12	0.00	1382255.87	3198030.88	40.380515	-104.789161
	11900.00	90.23	89.88	7208.40	5130.86	-2167.32	4732.11	0.00	1382256.86	3198130.87	40.380516	-104.788802
	12000.00	90.23	89.88	7208.01	5227.43	-2167.12	4832.11	0.00	1382257.84	3198230.86	40.380516	-104.788443
	12100.00	90.23	89.88	7207.61	5323.99	-2166.92	4932.11	0.00	1382258.83	3198330.85	40.380517	-104.788084
	12200.00	90.23	89.88	7207.21	5420.56	-2166.71	5032.11	0.00	1382259.82	3198430.84	40.380517	-104.787725
	12300.00	90.23	89.88	7206.81	5517.13	-2166.51	5132.11	0.00	1382260.80	3198530.83	40.380518	-104.787366
	12400.00	90.23	89.88	7206.41	5613.70	-2166.31	5232.11	0.00	1382261.79	3198630.82	40.380518	-104.787007
	12500.00	90.23	89.88	7206.01	5710.26	-2166.10	5332.11	0.00	1382262.77	3198730.81	40.380519	-104.786648
	12600.00	90.23	89.88	7205.62	5806.83	-2165.90	5432.11	0.00	1382263.76	3198830.80	40.380519	-104.786289
	12700.00	90.23	89.88	7205.22	5903.40	-2165.69	5532.11	0.00	1382264.75	3198930.79	40.380520	-104.785930
	12800.00	90.23	89.88	7204.82	5999.97	-2165.49	5632.11	0.00	1382265.73	3199030.78	40.380520	-104.785571
	12900.00	90.23	89.88	7204.42	6096.53	-2165.29	5732.10	0.00	1382266.72	3199130.77	40.380521	-104.785212
	13000.00	90.23	89.88	7204.02	6193.10	-2165.08	5832.10	0.00	1382267.71	3199230.76	40.380521	-104.784854
	13100.00	90.23	89.88	7203.63	6289.67	-2164.88	5932.10	0.00	1382268.69	3199330.75	40.380522	-104.784495
	13200.00	90.23	89.88	7203.23	6386.24	-2164.68	6032.10	0.00	1382269.68	3199430.74	40.380522	-104.784136
	13300.00	90.23	89.88	7202.83	6482.80	-2164.47	6132.10	0.00	1382270.67	3199530.73	40.380523	-104.783777
	13400.00	90.23	89.88	7202.43	6579.37	-2164.27	6232.10	0.00	1382271.65	3199630.72	40.380523	-104.783418
	13500.00	90.23	89.88	7202.03	6675.94	-2164.07	6332.10	0.00	1382272.64	3199730.71	40.380524	-104.783059
	13600.00	90.23	89.88	7201.63	6772.51	-2163.86	6432.10	0.00	1382273.63	3199830.70	40.380524	-104.782700
	13700.00	90.23	89.88	7201.24	6869.07	-2163.66	6532.10	0.00	1382274.61	3199930.69	40.380525	-104.782341
	13800.00	90.23	89.88	7200.84	6965.64	-2163.45	6632.10	0.00	1382275.60	3200030.68	40.380525	-104.781982
	13900.00	90.23	89.88	7200.44	7062.21	-2163.25	6732.09	0.00	1382276.59	3200130.67	40.380526	-104.781623
	14000.00	90.23	89.88	7200.04	7158.78	-2163.05	6832.09	0.00	1382277.57	3200230.66	40.380526	-104.781264
	14100.00	90.23	89.88	7199.64	7255.34	-2162.84	6932.09	0.00	1382278.56	3200330.65	40.380527	-104.780905
	14200.00	90.23	89.88	7199.25	7351.91	-2162.64	7032.09	0.00	1382279.55	3200430.64	40.380527	-104.780546
	14300.00	90.23	89.88	7198.85	7448.48	-2162.44	7132.09	0.00	1382280.53	3200530.63	40.380527	-104.780187
	14400.00	90.23	89.88	7198.45	7545.05	-2162.23	7232.09	0.00	1382281.52	3200630.62	40.380528	-104.779828
	14500.00	90.23	89.88	7198.05	7641.61	-2162.03	7332.09	0.00	1382282.50	3200730.61	40.380528	-104.779470
	14600.00	90.23	89.88	7197.65	7738.18	-2161.82	7432.09	0.00	1382283.49	3200830.60	40.380529	-104.779111
	14700.00	90.23	89.88	7197.25	7834.75	-2161.62	7532.09	0.00	1382284.48	3200930.59	40.380529	-104.778752
	14800.00	90.23	89.88	7196.86	7931.32	-2161.42	7632.09	0.00	1382285.46	3201030.58	40.380530	-104.778393
	14900.00	90.23	89.88	7196.46	8027.88	-2161.21	7					

## Stugart 20N R2 mdv 10June20 Anti-Collision Summary Report

**Analysis Date-24hr Time:** June 19, 2020 - 11:07  
**Client:** PDC Energy  
**Field:** CO, Weld County (NAD 83 NZ) - SRC  
**Structure:** PDC Energy 20-05N-66W (Stugart State 6-20 Pad)  
**Slot:** Stugart 20N  
**Well:** Stugart 20N  
**Borehole:** Original Hole  
**Scan MD Range:** 0.00ft ~ 15266.50ft

**Analysis Method:** 3D Least Distance  
**Reference Trajectory:** Stugart 20N R2 mdv 10June20 (Def Plan)  
**Depth Interval:** Every 10.00 Measured Depth (ft)  
**Rule Set:** D&M AntiCollision Standard S002 v5.1/5.2  
**Min Pts:** All local minima indicated.  
**Version / Patch:** 2.10.811.0  
**Database \ Project:** localhost\drilling-project1

**Trajectory Error Model:** ISCWSA0 3-D 95.000% Confidence 2.7955 sigma

### Offset Trajectories Summary

#### Offset Selection Criteria

Wellhead distance scan: Not performed!  
 Selection filters: Definitive Surveys - Definitive Plans - Definitive surveys exclude definitive plans  
 - All Non-Def Surveys when no Def-Survey is set in a borehole - All Non-Def Plans when no Def-Plan is set in a borehole

Offset Trajectory	Separation			Allow Dev. (ft)	Sep. Fact.	Controlling Rule	Reference Trajectory		Risk Level			Alert	Status
	Ct-Ct (ft)	MAS (ft)	EOU (ft)				MD (ft)	TVD (ft)	Alert	Minor	Major		

Results highlighted: Sep-Factor separation <= 1.50 ft

#### Stugart 21NA R2 mdv 10June20 (Def Plan)

Fail Minor

14.90	12.11	13.92	2.79	N/A	MAS = 3.69 (m)	0.00	0.00	CtCt<=15m<15.00				Enter Alert	
14.90	12.11	13.92	2.79	N/A	MAS = 3.69 (m)	4.00	4.00					WRP	
14.90	12.11	12.67	2.79	11.19	MAS = 3.69 (m)	290.00	290.00					MinPt-O-SF	
14.90	12.11	12.67	2.79	11.18	MAS = 3.69 (m)	300.00	300.00					MINPT-O-EQU	
14.13	12.11	7.14	2.01	2.19	MAS = 3.69 (m)	1180.00	1163.75					MinPts	
14.28	12.11	6.89	2.17	2.08	MAS = 3.69 (m)	1220.00	1201.68					MINPT-O-EQU	
14.65	12.11	6.99	2.54	2.05	MAS = 3.69 (m)	1250.00	1230.13					MinPt-O-SF	
79.59	24.58	62.88	55.01	5.00	OSF1.50	3050.00	2937.03	OSF>5.00				Exit Alert	
142.14	43.34	112.92	98.80	5.00	OSF1.50	4680.00	4482.71	OSF<5.00				Enter Alert	
224.54	71.30	176.68	153.24	4.77	OSF1.50	6820.00	6512.02					MinPt-O-SF	
248.52	248.61	82.45	-0.09	1.50	OSF1.50	13310.00	7202.79			OSF<1.50		Enter Minor	
245.54	316.53	34.19	-70.99	1.16	OSF1.50	15266.50	7195.00					MinPts	

#### Stugart 19N R2 mdv 10June20 (Def Plan)

Fail Minor

15.11	12.28	14.12	2.83	N/A	MAS = 3.74 (m)	0.00	0.00	CtCt<=15m<15.00				Enter Alert	
15.11	12.28	14.12	2.83	N/A	MAS = 3.74 (m)	4.00	4.00					WRP	
15.11	12.28	12.88	2.83	11.34	MAS = 3.74 (m)	290.00	290.00					MinPt-O-SF	
15.10	12.28	12.88	2.83	11.35	MAS = 3.74 (m)	300.00	300.00					MINPT-O-EQU	
14.52	12.28	8.52	2.24	2.70	MAS = 3.74 (m)	1080.00	1068.44					MinPts	
14.68	12.28	8.30	2.41	2.54	MAS = 3.74 (m)	1120.00	1106.69					MINPT-O-EQU	
15.43	12.28	8.61	3.15	2.49	MAS = 3.74 (m)	1170.00	1154.27					MinPt-O-SF	
204.45	68.33	158.56	136.11	4.53	OSF1.50	6865.48	6555.15					MinPt-O-SF	
228.65	228.70	75.86	-0.05	1.50	OSF1.50	12890.00	7204.46	OSF<1.50				Enter Minor	
228.75	313.11	19.69	-84.36	1.09	OSF1.50	15266.50	7195.00					MinPts	

#### Calvin 1 Blind 0' to 7355' - PR (Def Survey)

Fail Minor

8356.83	32.81	8355.01	8324.02	N/A	MAS = 10.00 (m)	0.00	0.00					Surface	
8356.75	32.81	8354.86	8323.96	103722.57	MAS = 10.00 (m)	4.00	4.00					MinPt-O-SF	
1408.23	430.23	1118.54	978.01	4.98	OSF1.50	13770.00	7200.96	OSF<5.00				Enter Alert	
458.29	461.89	147.98	-3.60	1.49	OSF1.50	14910.00	7196.42			OSF<1.50		Enter Minor	
408.54	473.11	91.86	-64.59	1.29	OSF1.50	15120.00	7195.58					MinPts	
434.79	469.26	121.41	-34.47	1.39	OSF1.50	15266.50	7195.00					TD	

#### Stugart 22N R2 mdv 10June20 (Def Plan)

Warning Alert

30.01	24.20	29.02	5.81	N/A	MAS = 7.38 (m)	0.00	0.00	CtCt<=15m<15.00				Enter Alert	
30.01	24.20	29.02	5.81	N/A	MAS = 7.38 (m)	4.00	4.00					WRP	
30.01	24.20	27.78	5.81	23.31	MAS = 7.38 (m)	290.00	290.00					MinPt-O-SF	
30.01	24.20	27.78	5.81	23.31	MAS = 7.38 (m)	300.00	300.00					MINPT-O-EQU	
28.75	24.20	21.66	4.65	4.54	MAS = 7.38 (m)	1190.00	1173.24					MinPts	
28.95	24.20	21.44	4.75	4.28	MAS = 7.38 (m)	1230.00	1211.17					MINPT-O-EQU	
31.14	24.20	22.69	6.94	4.04	MAS = 7.38 (m)	1330.00	1305.99					MinPt-O-SF	
60.00	24.20	47.21	35.80	5.00	MAS = 7.38 (m)	1920.00	1865.48	OSF>5.00				Exit Alert	
343.49	72.84	294.61	270.65	7.19	OSF1.50	6865.48	6555.15					MinPt-O-SF	
442.23	133.56	352.86	308.67	4.99	OSF1.50	10600.00	7213.58	OSF<5.00				Enter Alert	
442.40	297.45	243.79	144.95	2.23	OSF1.50	15266.50	7195.00					MinPts	

#### Stugart 18N R2 mdv 10June20 (Def Plan)

Warning Alert

30.01	24.20	29.02	5.81	N/A	MAS = 7.38 (m)	0.00	0.00	CtCt<=15m<15.00				Enter Alert	
30.01	24.20	29.02	5.81	N/A	MAS = 7.38 (m)	4.00	4.00					WRP	
30.01	24.20	27.78	5.81	23.31	MAS = 7.38 (m)	290.00	290.00					MinPt-O-SF	
30.00	24.20	27.78	5.80	23.33	MAS = 7.38 (m)	300.00	300.00					MINPT-O-EQU	
28.97	24.20	23.75	4.77	6.61	MAS = 7.38 (m)	1000.00	991.46					MinPts	
29.12	24.20	23.53	4.92	6.10	MAS = 7.38 (m)	1040.00	1030.03					MINPT-O-EQU	
32.37	24.20	25.66	8.17	5.47	MAS = 7.38 (m)	1170.00	1154.27					MinPt-O-SF	
48.76	24.20	39.52	24.56	5.79	MAS = 7.38 (m)	1490.00	1457.72	CtCt<=15m>15.00				Exit Alert	
373.72	65.65	329.62	308.07	8.65	OSF1.50	6760.00	6455.12					MinPt-O-SF	
438.10	132.22	349.62	305.88	5.00	OSF1.50	10390.00	7214.42	OSF<5.00				Enter Alert	
438.17	304.93	234.55	133.24	2.16	OSF1.50	15266.50	7195.00					MinPts	

#### Stugart 23N R2 mdv 10June20 (Def Plan)

Warning Alert

44.91	32.81	43.93	12.10	N/A	MAS = 10.00 (m)	0.00	0.00	CtCt<=15m<15.00				Enter Alert	
44.91	32.81	43.93	12.10	N/A	MAS = 10.00 (m)	4.00	4.00					WRP	
44.91	32.81	42.68	12.10	35.28	MAS = 10.00 (m)	290.00	290.00					MinPt-O-SF	
44.91	32.81	42.68	12.10	35.28	MAS = 10.00 (m)	300.00	300.00					MINPT-O-EQU	
43.05	32.81	35.97	10.25	6.90	MAS = 10.00 (m)	1190.00	1173.24					MinPts	
43.29	32.81	35.69	10.49	6.39	MAS = 10.00 (m)	1240.00	1220.65					MINPT-O-EQU	
47.65	32.81	38.62	14.84	5.80	MAS = 10.00 (m)	1390.00	1362.89					MinPt-O-SF	
48.70	32.81	39.51	15.89	5.81	MAS = 10.00 (m)	1410.00	1381.86	CtCt<=15m>15.00				Exit Alert	
538.82	74.49	488.84	464.34	10.99	OSF1.50	6865.48	6555.15					MinPt-O-SF	
657.06	163.68	547.61	493.38	6.05	OSF1.50	11250.00	7210.99					MinPt-CtCt	
657.06	198.02	524.72	459.04	4.99	OSF1.50	12260.00	7206.97	OSF<5.00				Enter Alert	
657.10	305.00	453.44	352.10	3.24	OSF1.50	15266.50	7195.00					MinPts	

#### Stugart 17C R2 mdv 10June20 (Def Plan)

Warning Alert

Offset Trajectory	Separation			Allow Dev. (ft)	Sep. Fact.	Controlling Rule	Reference Trajectory		Risk Level			Alert	Status
	Ct-Ct (ft)	MAS (ft)	EOU (ft)				MD (ft)	TVD (ft)	Alert	Minor	Major		
Stugart 24N R2 mdv 10June20 (Def Plan)	44.87	32.81	43.89	12.06	N/A	MAS = 10.00 (m)	0.00	0.00	CtCt<=15m<15.00			Enter Alert	
	44.87	32.81	43.89	12.06	N/A	MAS = 10.00 (m)	4.00	4.00				WRP	
	44.86	32.81	42.64	12.06	35.24	MAS = 10.00 (m)	290.00	290.00				MinPt-O-SF	
	44.86	32.81	42.63	12.05	35.29	MAS = 10.00 (m)	300.00	300.00				MINPT-O-EOU	
	43.65	32.81	39.34	10.84	12.83	MAS = 10.00 (m)	900.00	894.44				MinPts	
	43.84	32.81	39.17	11.03	11.65	MAS = 10.00 (m)	940.00	933.35				MINPT-O-EOU	
	49.11	32.81	43.02	16.30	9.42	MAS = 10.00 (m)	1110.00	1097.14	CtCt<=15m>15.00			Exit Alert	
	52.28	32.81	45.79	19.47	9.31	MAS = 10.00 (m)	1160.00	1144.77				MinPt-O-SF	
	611.19	65.23	567.37	545.96	14.25	OSF1.50	6865.48	6555.15				MinPt-O-SF	
	684.68	206.32	546.80	478.36	4.99	OSF1.50	12310.00	7206.77	OSF<5.00			Enter Alert	
685.95	311.38	478.03	374.57	3.31	OSF1.50	15266.50	7195.00				MinPts		
Warning Alert													
Stugart 24N R2 mdv 10June20 (Def Plan)	60.02	32.81	59.03	27.21	N/A	MAS = 10.00 (m)	0.00	0.00				Surface	
	60.02	32.81	59.03	27.21	N/A	MAS = 10.00 (m)	4.00	4.00				WRP	
	60.01	32.81	57.78	27.21	47.41	MAS = 10.00 (m)	290.00	290.00				MinPt-O-SF	
	60.01	32.81	57.78	27.20	47.41	MAS = 10.00 (m)	300.00	300.00				MINPT-O-EOU	
	57.60	32.81	50.42	24.79	9.14	MAS = 10.00 (m)	1200.00	1182.72				MinPts	
	57.89	32.81	50.18	25.08	8.47	MAS = 10.00 (m)	1250.00	1230.13				MINPT-O-EOU	
	65.15	32.81	55.54	32.34	7.44	MAS = 10.00 (m)	1450.00	1419.79				MinPt-O-SF	
	686.59	75.69	635.80	610.90	13.77	OSF1.50	6865.48	6555.15				MinPt-O-SF	
	879.33	264.60	702.60	614.73	5.00	OSF1.50	14260.00	7199.01	OSF<5.00			Enter Alert	
	879.62	300.82	678.75	578.80	4.40	OSF1.50	15266.50	7195.00				MinPts	
Warning Alert													
Stugart 16N R2 mdv 10June20 (Def Plan)	59.99	32.81	59.00	27.18	N/A	MAS = 10.00 (m)	0.00	0.00				Surface	
	59.98	32.81	58.99	27.17	N/A	MAS = 10.00 (m)	4.00	4.00				WRP	
	59.98	32.81	57.75	27.17	47.54	MAS = 10.00 (m)	250.00	250.00				MinPts	
	59.98	32.81	57.75	27.17	47.41	MAS = 10.00 (m)	260.00	260.00				MINPT-O-EOU	
	59.98	32.81	57.75	27.17	47.38	MAS = 10.00 (m)	290.00	290.00				MinPt-O-SF	
	59.98	32.81	57.75	27.17	47.39	MAS = 10.00 (m)	300.00	300.00				MINPT-O-EOU	
	58.75	32.81	55.12	25.94	21.90	MAS = 10.00 (m)	820.00	816.25				MinPts	
	58.88	32.81	54.93	26.07	19.49	MAS = 10.00 (m)	860.00	855.40				MINPT-O-EOU	
	79.40	32.81	72.54	46.59	13.36	MAS = 10.00 (m)	1220.00	1201.68				MinPt-O-SF	
	771.34	62.98	729.03	708.37	18.64	OSF1.50	6780.00	6474.09				MinPt-O-SF	
879.96	264.91	703.02	615.05	5.00	OSF1.50	14120.00	7199.56	OSF<5.00			Enter Alert		
880.28	306.72	675.46	573.55	4.31	OSF1.50	15266.50	7195.00				MinPts		
Warning Alert													
UPRC 21-14H6 GYRO 0' to 7418' - AB (Def Survey)	5786.41	32.81	5784.60	5753.61	N/A	MAS = 10.00 (m)	0.00	0.00				Surface	
	5786.33	32.81	5784.42	5753.52	59459.75	MAS = 10.00 (m)	4.00	4.00				MinPt-O-SF	
	5784.69	32.81	5781.91	5751.88	5956.68	MAS = 10.00 (m)	300.00	300.00				MinPt-O-SF	
	5593.55	32.81	5581.65	5560.74	546.38	MAS = 10.00 (m)	2110.00	2045.65				MinPt-O-SF	
	406.00	127.89	318.78	278.10	4.92	OSF1.50	12230.00	7207.09	OSF<5.00			Enter Alert	
	363.43	149.95	262.22	213.48	3.69	OSF1.50	12410.00	7206.37				MinPt-CtCt	
	363.54	150.43	262.06	213.11	3.68	OSF1.50	12420.00	7206.33				MinPts	
	364.58	151.08	262.77	213.50	3.67	OSF1.50	12440.00	7206.25				MinPt-O-SF	
	452.06	136.79	360.33	315.26	5.00	OSF1.50	12680.00	7205.30	OSF>5.00			Exit Alert	
	2877.42	66.25	2832.71	2811.16	66.72	OSF1.50	15266.50	7195.00				TD	
Warning Alert													
Wiedeman 21-15H6 GYRO 0' to 7491' - AB (Def Survey)	7025.91	32.81	7024.10	6993.11	N/A	MAS = 10.00 (m)	0.00	0.00				Surface	
	7025.83	32.81	7023.93	6993.03	78773.38	MAS = 10.00 (m)	4.00	4.00				MinPt-O-SF	
	7024.12	32.81	7021.37	6991.31	7469.81	MAS = 10.00 (m)	300.00	300.00				MinPt-O-SF	
	6667.32	32.81	6646.51	6634.51	347.72	MAS = 10.00 (m)	4530.00	4340.47				MinPts	
	6667.39	32.81	6646.39	6634.58	344.06	MAS = 10.00 (m)	4570.00	4378.40				MINPT-O-EOU	
	490.24	153.73	385.53	336.51	4.93	OSF1.50	13610.00	7201.60	OSF<5.00			Enter Alert	
	437.30	180.55	315.59	256.75	3.68	OSF1.50	13830.00	7200.72				MinPt-CtCt	
	437.38	180.98	315.43	256.39	3.67	OSF1.50	13840.00	7200.68				MINPT-O-EOU	
	437.68	181.33	315.56	256.35	3.66	OSF1.50	13850.00	7200.64				MinPt-O-ADP	
	438.22	181.59	315.97	256.62	3.66	OSF1.50	13860.00	7200.60				MinPt-O-SF	
535.10	164.04	425.20	371.05	4.93	OSF1.50	14140.00	7199.49	OSF>5.00			Exit Alert		
1500.03	92.56	1437.79	1407.47	24.71	OSF1.50	15266.50	7195.00				TD		
Warning Alert													
UPV 21-11H6 Blind 0' to 7440' - AB (Def Survey)	5596.59	32.81	5594.78	5563.78	N/A	MAS = 10.00 (m)	0.00	0.00				Surface	
	5596.51	32.81	5594.61	5563.70	62701.17	MAS = 10.00 (m)	4.00	4.00				MinPt-O-SF	
	5368.99	317.30	5156.93	5051.70	25.50	OSF1.50	5670.00	5421.51				MinPt-CtCt	
	1431.87	434.44	1140.96	997.43	4.97	OSF1.50	11460.00	7210.16	OSF<5.00			Enter Alert	
	854.23	448.54	554.67	405.69	2.86	OSF1.50	12610.00	7205.58				MinPts	
	1441.27	433.64	1151.64	1007.63	5.00	OSF1.50	13770.00	7200.96				Exit Alert	
2791.26	426.56	2506.35	2364.70	9.85	OSF1.50	15266.50	7195.00			TD			
Warning Alert													
A.J. Gold 22-13 Blind 0' to 7426' - PR (Def Survey)	9331.99	32.81	9330.18	9299.18	N/A	MAS = 10.00 (m)	0.00	0.00				Surface	
	9331.92	32.81	9330.03	9299.11	117664.28	MAS = 10.00 (m)	4.00	4.00				MinPt-O-SF	
	1401.25	428.61	1112.34	972.64	4.98	OSF1.50	14810.00	7196.82	OSF<5.00			Enter Alert	
	950.63	429.65	660.86	520.98	3.36	OSF1.50	15266.50	7195.00				MinPts	
Warning Alert													
UPRC 21-12H6 Blind 0' to 7502' - AB (Def Survey)	4178.70	32.81	4176.89	4145.90	N/A	MAS = 10.00 (m)	0.00	0.00				Surface	
	4178.62	32.81	4176.71	4145.81	44190.88	MAS = 10.00 (m)	4.00	4.00				MinPt-O-SF	
	3938.65	286.13	3747.36	3652.52	20.76	OSF1.50	5100.00	4880.99				MinPt-CtCt	
	3967.46	371.81	3719.06	3595.65	16.07	OSF1.50	6600.00	6303.40				MINPT-O-EOU	
	1430.68	432.17	1141.77	998.51	4.99	OSF1.50	10120.00	7215.49	OSF<5.00			Enter Alert	
	969.82	439.87	676.04	529.95	3.31	OSF1.50	11170.00	7211.31				MinPts	
	969.86	439.89	676.06	529.96	3.31	OSF1.50	11180.00	7211.27				MinPt-O-SF	
	1435.37	433.29	1145.98	1002.08	4.98	OSF1.50	12230.00	7207.09	OSF>5.00			Exit Alert	
4207.94	426.30	3923.20	3781.63	14.86	OSF1.50	15266.50	7195.00				TD		
Warning Alert													
Wiedeman R J 20-13 GYRO 0' to 7980' - PA (Def Survey)	2366.76	32.81	2364.95	2333.95	N/A	MAS = 10.00 (m)	0.00	0.00				Surface	
	2366.74	32.81	2364.90	2333.93	102745.21	MAS = 10.00 (m)	4.00	4.00				MinPt-O-SF	
	2365.77	32.81	2362.91	2332.97	2253.03	MAS = 10.00 (m)	300.00	300.00				MinPt-O-SF	
	1121.44	337.85	895.60	783.59	5.00	OSF1.50	6830.00	6521.50	OSF<5.00			Enter Alert	
	1119.92	341.27	891.81	778.65	4.94	OSF1.50	6890.00	6578.39				MinPt-CtCt	
	1120.31	342.40	891.45	777.91	4.93	OSF1.50	6910.00	6597.32				MINPT-O-EOU	
	1120.72	342.96	891.49	777.76	4.92	OSF1.50	6920.00	6606.77				MinPt-O-ADP	

Offset Trajectory	Separation			Allow Dev. (ft)	Sep. Fact.	Controlling Rule	Reference Trajectory		Risk Level			Alert	Status
	Ct-Ct (ft)	MAS (ft)	EOU (ft)				MD (ft)	TVD (ft)	Alert	Minor	Major		
	1131.10	347.94	898.58	783.16	4.89	OSF1.50	7010.00	6891.05				MinPt-O-SF	
	1187.00	357.48	948.15	829.52	5.00	OSF1.50	7190.00	6851.41	OSF>5.00			Exit Alert	
	9111.52	378.05	8858.96	8733.48	36.30	OSF1.50	15266.50	7195.00				TD	
Stugart 15N R2 mdv 10June20 (Def Plan)													Pass
	74.89	32.81	73.90	42.08	N/A	MAS = 10.00 (m)	0.00	0.00				Surface	
	74.88	32.81	73.89	42.07	N/A	MAS = 10.00 (m)	4.00	4.00				WRP	
	74.88	32.81	72.65	42.07	59.54	MAS = 10.00 (m)	250.00	250.00				MinPts	
	74.88	32.81	72.65	42.07	59.38	MAS = 10.00 (m)	260.00	260.00				MINPT-O-EOU	
	74.88	32.81	72.65	42.07	59.35	MAS = 10.00 (m)	290.00	290.00				MinPt-O-SF	
	74.88	32.81	72.65	42.07	59.35	MAS = 10.00 (m)	300.00	300.00				MINPT-O-EOU	
	73.62	32.81	70.65	40.82	36.52	MAS = 10.00 (m)	740.00	737.61				MinPts	
	73.77	32.81	70.49	40.96	31.66	MAS = 10.00 (m)	780.00	776.98				MINPT-O-EOU	
	112.30	32.81	105.11	79.50	17.93	MAS = 10.00 (m)	1280.00	1258.58				MinPt-O-SF	
	120.47	32.81	112.81	87.66	17.92	MAS = 10.00 (m)	1340.00	1315.48				MinPt-O-SF	
	142.94	32.81	134.08	110.13	18.02	MAS = 10.00 (m)	1500.00	1467.20				MinPt-O-SF	
	936.80	60.45	896.17	876.35	23.61	OSF1.50	6660.00	6360.30				MinPt-O-SF	
	1095.10	100.33	1027.89	994.77	16.52	OSF1.50	9460.00	7218.12				MinPt-CICt	
	1095.37	303.98	892.38	791.37	6.42	OSF1.50	15266.50	7195.00				MinPts	
Stugart 14N R2 mdv 10June20 (Def Plan)													Pass
	89.99	32.81	89.01	57.18	N/A	MAS = 10.00 (m)	0.00	0.00				Surface	
	89.99	32.81	89.00	57.18	N/A	MAS = 10.00 (m)	4.00	4.00				WRP	
	89.99	32.81	87.76	57.18	71.72	MAS = 10.00 (m)	250.00	250.00				MinPts	
	89.98	32.81	87.75	57.17	71.49	MAS = 10.00 (m)	290.00	290.00				MinPt-O-SF	
	89.98	32.81	87.75	57.17	71.49	MAS = 10.00 (m)	300.00	300.00				MINPT-O-EOU	
	88.73	32.81	86.37	55.92	63.87	MAS = 10.00 (m)	660.00	658.60				MinPts	
	88.86	32.81	86.29	56.05	55.40	MAS = 10.00 (m)	690.00	688.27				MINPT-O-EOU	
	161.34	32.81	153.47	128.53	23.28	MAS = 10.00 (m)	1390.00	1362.89				MinPt-O-SF	
	166.47	32.81	158.37	133.66	23.27	MAS = 10.00 (m)	1420.00	1391.34				MinPt-O-SF	
	182.03	32.81	173.26	149.23	23.25	MAS = 10.00 (m)	1510.00	1476.68				MinPt-O-SF	
	1163.11	60.60	1122.38	1102.51	29.24	OSF1.50	6790.00	6483.57				MinPt-O-SF	
	1315.01	304.29	1111.82	1010.72	6.60	OSF1.50	15266.50	7195.00				MinPts	
Stugart 08N R2 mdv 10June20 (Def Plan)													Pass
	99.72	32.81	98.74	66.91	N/A	MAS = 10.00 (m)	0.00	0.00				Surface	
	99.72	32.81	98.74	66.91	N/A	MAS = 10.00 (m)	4.00	4.00				WRP	
	99.72	32.81	97.49	66.91	79.36	MAS = 10.00 (m)	250.00	250.00				MinPts	
	99.75	32.81	97.49	66.94	77.46	MAS = 10.00 (m)	260.00	260.00				MINPT-O-EOU	
	202.38	32.81	196.65	169.57	42.51	MAS = 10.00 (m)	950.00	943.06				MinPt-O-SF	
	2378.79	57.44	2340.17	2321.35	63.18	OSF1.50	6865.48	6555.15				MinPt-O-SF	
	2639.38	305.75	2435.20	2333.61	12.99	OSF1.50	15266.50	7195.00				MinPts	
Stugart 07N R2 mdv 10June20 (Def Plan)													Pass
	100.79	32.81	99.80	67.98	N/A	MAS = 10.00 (m)	0.00	0.00				Surface	
	100.79	32.81	99.80	67.98	N/A	MAS = 10.00 (m)	4.00	4.00				WRP	
	100.79	32.81	98.56	67.98	80.22	MAS = 10.00 (m)	250.00	250.00				MinPts	
	100.81	32.81	98.56	68.01	78.28	MAS = 10.00 (m)	260.00	260.00				MINPT-O-EOU	
	214.53	32.81	208.97	181.72	46.69	MAS = 10.00 (m)	920.00	913.91				MinPt-O-SF	
	2573.75	57.11	2535.35	2516.64	68.75	OSF1.50	6865.48	6555.15				MinPt-O-SF	
	2857.91	305.05	2654.22	2552.86	14.05	OSF1.50	15266.50	7195.00				MinPts	
Stugart 09C R2 mdv 10June20 (Def Plan)													Pass
	101.16	32.81	100.18	68.35	N/A	MAS = 10.00 (m)	0.00	0.00				Surface	
	101.16	32.81	100.18	68.35	N/A	MAS = 10.00 (m)	4.00	4.00				WRP	
	101.16	32.81	98.93	68.35	80.52	MAS = 10.00 (m)	250.00	250.00				MinPts	
	101.17	32.81	98.92	68.37	78.68	MAS = 10.00 (m)	260.00	260.00				MINPT-O-EOU	
	190.12	32.81	184.23	157.31	38.58	MAS = 10.00 (m)	990.00	981.80				MinPt-O-SF	
	2182.53	57.83	2143.65	2124.71	57.57	OSF1.50	6865.48	6555.15				MinPt-O-SF	
	2425.72	307.81	2220.18	2117.91	11.85	OSF1.50	15266.50	7195.00				MinPts	
Stugart 13NA R2 mdv 10June20 (Def Plan)													Pass
	104.89	32.81	103.91	72.08	N/A	MAS = 10.00 (m)	0.00	0.00				Surface	
	104.89	32.81	103.90	72.08	N/A	MAS = 10.00 (m)	4.00	4.00				WRP	
	104.89	32.81	102.66	72.08	83.72	MAS = 10.00 (m)	250.00	250.00				MinPts	
	104.88	32.81	102.65	72.07	83.44	MAS = 10.00 (m)	290.00	290.00				MinPt-O-SF	
	104.87	32.81	102.64	72.06	83.49	MAS = 10.00 (m)	300.00	300.00				MINPT-O-EOU	
	103.82	32.81	102.02	71.01	126.34	MAS = 10.00 (m)	580.00	579.27				MinPts	
	103.93	32.81	101.94	71.12	102.69	MAS = 10.00 (m)	610.00	609.05				MINPT-O-EOU	
	277.30	32.81	266.49	244.49	28.12	MAS = 10.00 (m)	1800.00	1751.68				MinPt-O-SF	
	1282.99	56.76	1244.82	1226.22	34.48	OSF1.50	6520.00	6227.54				MinPt-O-SF	
	1637.35	300.16	1336.91	1237.18	7.70	OSF1.50	15266.50	7195.00				MinPts	
Stugart 10N R2 mdv 10June20 (Def Plan)													Pass
	104.29	32.81	103.30	71.48	N/A	MAS = 10.00 (m)	0.00	0.00				Surface	
	104.29	32.81	103.30	71.48	N/A	MAS = 10.00 (m)	4.00	4.00				WRP	
	104.11	32.81	101.81	71.31	78.01	MAS = 10.00 (m)	300.00	300.00				MinPt-O-SF	
	103.85	32.81	101.64	71.04	84.05	MAS = 10.00 (m)	350.00	349.98				MinPts	
	200.50	32.81	194.25	167.69	37.92	MAS = 10.00 (m)	1130.00	1116.23				MinPt-O-SF	
	1999.65	58.44	1960.36	1941.21	62.18	OSF1.50	6900.00	6587.86				MinPt-O-SF	
	2200.89	308.48	1994.90	1892.40	10.73	OSF1.50	15266.50	7195.00				MinPts	
Stugart 06N R2 mdv 10June20 (Def Plan)													Pass
	104.18	32.81	103.20	71.37	N/A	MAS = 10.00 (m)	0.00	0.00				Surface	
	104.18	32.81	103.20	71.37	N/A	MAS = 10.00 (m)	4.00	4.00				WRP	
	104.18	32.81	101.95	71.37	82.94	MAS = 10.00 (m)	250.00	250.00				MinPts	
	104.21	32.81	101.95	71.40	80.94	MAS = 10.00 (m)	260.00	260.00				MINPT-O-EOU	
	216.18	32.81	210.91	183.37	50.26	MAS = 10.00 (m)	870.00	865.17				MinPt-O-SF	
	2755.39	56.88	2717.15	2698.51	73.92	OSF1.50	6865.48	6555.15				MinPt-O-SF	
	3077.57	305.17	2873.79	2772.40	15.17	OSF1.50	15266.50	7195.00				MinPts	
Stugart 11N R2 mdv 10June20 (Def Plan)													Pass
	109.63	32.81	108.64	76.82	N/A	MAS = 10.00 (m)	0.00	0.00				Surface	
	109.63	32.81	108.64	76.82	N/A	MAS = 10.00 (m)	4.00	4.00				WRP	
	109.43	32.81	107.18	76.62	86.06	MAS = 10.00 (m)	300.00	300.00				MinPt-O-SF	
	107.63	32.81	105.92	74.83	145.70	MAS = 10.00 (m)	460.00	459.81				MINPT-O-EOU	
	107.63	32.81	105.92	74.82	147.49	MAS = 10.00 (m)	470.00	469.78				MinPts	
	198.65	32.81	192.11	165.84	35.58	MAS = 10.00 (m)	1230.00	1211.17				MinPt-O-SF	

Offset Trajectory	Separation			Allow Dev. (ft)	Sep. Fact.	Controlling Rule	Reference Trajectory		Risk Level			Alert	Status					
	Ct-Ct (ft)	MAS (ft)	EOU (ft)				MD (ft)	TVD (ft)	Alert	Minor	Major							
	1790.97	58.54	1751.62	1732.43	46.68	OSF1.50	6865.48	6555.15				MinPt-O-SF						
	1982.61	307.23	1777.47	1675.38	9.71	OSF1.50	15266.50	7195.00				MinPts						
	Stugart 05NA R2 mdv 10June20 (Def Plan)																	
	109.42	32.81	108.44	76.62	N/A	MAS = 10.00 (m)	0.00	0.00				Surface	Pass					
	109.42	32.81	108.44	76.62	N/A	MAS = 10.00 (m)	4.00	4.00				WRP						
	109.42	32.81	107.20	76.62	87.16	MAS = 10.00 (m)	250.00	250.00				MinPts						
	203.89	32.81	199.11	171.08	53.42	MAS = 10.00 (m)	790.00	786.81				MinPt-O-SF						
	2962.59	56.68	2924.48	2905.91	79.77	OSF1.50	6865.48	6555.15				MinPt-O-SF						
	3298.65	304.58	3095.27	2994.08	16.29	OSF1.50	15266.50	7195.00				MinPts						
	Stugart 12N R2 mdv 10June20 (Def Plan)																	
		116.42	32.81	115.44	83.61	N/A	MAS = 10.00 (m)	0.00				0.00					Surface	Pass
116.42		32.81	115.44	83.61	N/A	MAS = 10.00 (m)	4.00	4.00	WRP									
116.33		32.81	114.10	83.52	92.22	MAS = 10.00 (m)	290.00	290.00	MinPt-O-SF									
112.43		32.81	110.41	79.62	107.94	MAS = 10.00 (m)	600.00	599.13	MinPts									
112.55		32.81	110.27	79.75	85.91	MAS = 10.00 (m)	640.00	638.80	MINPT-O-EOU									
195.62		32.81	188.24	162.81	30.42	MAS = 10.00 (m)	1340.00	1315.48	MinPt-O-SF									
1568.70		58.46	1529.40	1510.24	40.92	OSF1.50	6790.00	6483.57	MinPt-O-SF									
1762.90		305.25	1559.07	1457.64	8.69	OSF1.50	15266.50	7195.00	MinPts									
Stugart 04N R2 mdv 10June20 (Def Plan)																		
		116.47	32.81	115.48	83.66	N/A	MAS = 10.00 (m)	0.00	0.00				Surface				Pass	
	116.46	32.81	115.48	83.65	N/A	MAS = 10.00 (m)	4.00	4.00	WRP									
	116.46	32.81	114.24	83.65	93.05	MAS = 10.00 (m)	250.00	250.00	MinPts									
	116.49	32.81	114.24	83.68	90.79	MAS = 10.00 (m)	260.00	260.00	MINPT-O-EOU									
	213.10	32.81	208.31	180.29	55.79	MAS = 10.00 (m)	790.00	786.81	MinPt-O-SF									
	3138.48	56.85	3100.25	3081.63	84.24	OSF1.50	6900.00	6587.86	MinPt-O-SF									
	3523.34	67.66	3477.90	3455.67	79.24	OSF1.50	7910.00	7220.81	MinPts									
	3514.94	305.20	3311.15	3209.74	17.33	OSF1.50	15266.50	7195.00	MinPts									
	Stugart 03N R2 mdv 10June20 (Def Plan)																	
		124.87	32.81	123.88	92.06	N/A	MAS = 10.00 (m)	0.00	0.00							Surface		Pass
124.86		32.81	123.88	92.05	N/A	MAS = 10.00 (m)	4.00	4.00	WRP									
124.86		32.81	122.64	92.05	99.82	MAS = 10.00 (m)	250.00	250.00	MinPts									
124.89		32.81	122.64	92.08	97.40	MAS = 10.00 (m)	260.00	260.00	MINPT-O-EOU									
229.42		32.81	224.51	196.61	58.21	MAS = 10.00 (m)	810.00	806.44	MinPt-O-SF									
3299.75		56.74	3261.59	3243.01	88.74	OSF1.50	6900.00	6587.86	MinPt-O-SF									
3734.74		305.52	3530.74	3429.23	18.39	OSF1.50	15266.50	7195.00	MinPts									
Stugart State 02C R2 mdv 10June20 (Def Plan)																		
	134.44	32.81	133.46	101.63	N/A	MAS = 10.00 (m)	0.00	0.00				Surface	Pass					
	134.44	32.81	133.45	101.63	N/A	MAS = 10.00 (m)	4.00	4.00				WRP						
	134.44	32.81	132.21	101.63	107.53	MAS = 10.00 (m)	250.00	250.00				MinPts						
	134.47	32.81	132.21	101.66	104.94	MAS = 10.00 (m)	260.00	260.00				MINPT-O-EOU						
	250.32	32.81	245.23	217.51	60.72	MAS = 10.00 (m)	840.00	835.84				MinPt-O-SF						
	3443.50	56.64	3405.41	3386.85	92.78	OSF1.50	6900.00	6587.86				MinPt-O-SF						
	3935.01	61.04	3893.99	3873.97	98.25	OSF1.50	8210.00	7223.09				MinPt-O-SF						
	3965.02	61.46	3923.72	3903.56	98.33	OSF1.50	8320.00	7222.66				MinPt-O-SF						
	3957.72	305.79	3753.53	3651.93	19.47	OSF1.50	15266.50	7195.00				MinPts						
	Stugart State 01N R2 mdv 10June20 (Def Plan)																	
	144.94	32.81	143.96	112.14	N/A	MAS = 10.00 (m)	0.00	0.00				Surface	Pass					
	144.94	32.81	143.96	112.13	N/A	MAS = 10.00 (m)	4.00	4.00				WRP						
	144.94	32.81	143.03	112.13	155.32	MAS = 10.00 (m)	200.00	200.00				MinPts						
	145.00	32.81	142.97	112.19	137.02	MAS = 10.00 (m)	220.00	220.00				MINPT-O-EOU						
	286.51	32.81	281.14	253.70	65.14	MAS = 10.00 (m)	880.00	874.93				MinPt-O-SF						
	3641.83	56.52	3603.83	3585.32	98.35	OSF1.50	6900.00	6587.86				MinPt-O-SF						
	4149.53	60.74	4108.71	4088.79	104.15	OSF1.50	8220.00	7223.05				MinPt-O-SF						
	4171.97	306.08	3967.59	3865.89	20.51	OSF1.50	15266.50	7195.00				MinPts						
	Lundvall 11-20 MWD 0' to 7810' - PR (Def Survey)																	
		2354.59	32.81	2352.77	2321.78	N/A	MAS = 10.00 (m)	0.00				0.00					Surface	Pass
2354.57		32.81	2352.73	2321.76	124773.78	MAS = 10.00 (m)	4.00	4.00	MinPt-O-SF									
2260.54		32.81	2253.72	2227.73	452.49	MAS = 10.00 (m)	1020.00	1010.76	MinPt-O-SF									
1382.78		32.81	1367.52	1349.97	104.58	MAS = 10.00 (m)	3340.00	3212.03	MinPt-O-SF									
340.18		48.86	307.08	291.32	10.75	OSF1.50	5560.00	5317.20	MinPt-CtCt									
340.25		49.05	307.01	291.20	10.71	OSF1.50	5570.00	5326.68	MINPT-O-EOU									
340.42		49.24	307.05	291.17	10.67	OSF1.50	5580.00	5336.16	MinPt-O-ADP									
344.50		50.36	310.39	294.14	10.55	OSF1.50	5650.00	5402.54	MinPt-O-SF									
8192.29		61.98	8150.44	8130.32	203.50	OSF1.50	15266.50	7195.00	TD									
HSR-Wiedeman 16-20 GYRO 0' to 7501' - AB (Def Survey)																		
	3586.50	32.81	3584.69	3553.69	N/A	MAS = 10.00 (m)	0.00	0.00				Surface	Pass					
	3586.48	32.81	3584.64	3553.67	141599.51	MAS = 10.00 (m)	4.00	4.00				MinPt-O-SF						
	3585.52	32.81	3582.52	3552.71	3011.22	MAS = 10.00 (m)	300.00	300.00				MinPt-O-SF						
	342.63	86.55	283.65	256.08	6.14	OSF1.50	9770.00	7216.88				MinPt-CtCt						
	342.71	87.09	283.40	255.62	6.10	OSF1.50	9780.00	7216.84				MINPT-O-EOU						
	343.09	87.59	283.47	255.49	6.07	OSF1.50	9790.00	7216.80				MinPt-O-ADP						
	345.95	88.80	285.61	257.15	6.02	OSF1.50	9820.00	7216.68				MinPt-O-SF						
	5504.24	60.37	5463.46	5443.88	140.46	OSF1.50	15266.50	7195.00				TD						
Stugart 6-20 Blind 0' to 7610' - PR (Def Survey)																		
	361.66	32.81	359.85	328.85	N/A	MAS = 10.00 (m)	0.00	0.00				Surface	Pass					
	361.53	32.81	359.59	328.72	2917.23	MAS = 10.00 (m)	4.00	4.00				MinPt-O-SF						
	361.40	32.81	351.14	328.59	42.57	MAS = 10.00 (m)	250.00	250.00				MinPts						
	363.72	32.81	348.63	330.91	27.26	MAS = 10.00 (m)	370.00	369.96				MINPT-O-EOU						
	2323.10	398.98	2056.58	1924.12	8.76	OSF1.50	6960.00	6644.43				MinPt-O-SF						
	8619.57	432.08	8330.99	8187.49	30.03	OSF1.50	15266.50	7195.00				TD						
Stugart 22-20 MWD 0' to 7736' - PR (Def Survey)																		
	369.60	32.81	367.79	336.79	N/A	MAS = 10.00 (m)	0.00	0.00				Surface	Pass					
	369.60	32.81	367.79	336.79	N/A	MAS = 10.00 (m)	4.00	4.00				WRP						
	369.60	32.81	366.69	336.79	335.73	MAS = 10.00 (m)	250.00	250.00				MinPts						
	369.62	32.81	366.68	336.81	327.60	MAS = 10.00 (m)	260.00	260.00				MINPT-O-EOU						
	449.97	32.81	443.60	417.17	98.31	MAS = 10.00 (m)	970.00	962.44				MinPt-O-SF						
	653.81	32.81	643.32	621.00	73.41	MAS = 10.00 (m)	1930.00	1874.96				MinPt-O-SF						

Offset Trajectory	Separation			Allow Dev. (ft)	Sep. Fact.	Controlling Rule	Reference Trajectory		Risk Level			Alert	Status
	Ct-Ct (ft)	MAS (ft)	EOU (ft)				MD (ft)	TVD (ft)	Alert	Minor	Major		
	666.77	32.81	656.11	633.96	73.49	MAS = 10.00 (m)	2010.00	1950.82				MinPt-O-SF	
	1251.30	48.30	1218.57	1203.00	46.14	OSF1.50	5780.00	5625.82				MinPt-O-SF	
	1269.75	48.98	1236.56	1220.77	40.19	OSF1.50	5870.00	5611.16				MinPt-O-SF	
	8918.46	61.54	8876.90	8856.92	223.16	OSF1.50	15266.50	7195.00				TD	
HSR-Wiedeman 15-20 GYRO 0' to 7527' - AB (Def Survey)													
	2748.78	32.81	2746.97	2715.97	N/A	MAS = 10.00 (m)	0.00	0.00				Surface	Pass
	2749.71	32.81	2746.83	2715.91	37417.57	MAS = 10.00 (m)	4.00	4.00				MinPt-O-SF	
	2748.35	32.81	2746.44	2715.55	26863.59	MAS = 10.00 (m)	50.00	50.00				MinPts	
	2748.40	32.81	2746.41	2715.60	15263.74	MAS = 10.00 (m)	80.00	80.00				MINPT-O-EOU	
	2749.08	32.81	2745.98	2716.27	2138.95	MAS = 10.00 (m)	390.00	389.94				MinPt-O-SF	
	2745.68	32.81	2742.51	2712.87	2035.41	MAS = 10.00 (m)	460.00	459.81				MinPt-O-SF	
	390.46	61.89	347.97	328.58	9.97	OSF1.50	8270.00	7222.86				MinPts	
	390.59	62.09	347.98	328.61	9.94	OSF1.50	8280.00	7222.82				MinPt-O-ADP	
	393.67	62.83	350.61	330.84	9.87	OSF1.50	8320.00	7222.66				MinPt-O-SF	
	7007.34	58.94	6967.51	6948.40	183.29	OSF1.50	15266.50	7195.00				TD	
Wiedeman 20-20 GYRO 0' to 7542' - AB (Def Survey)													
	2411.21	32.81	2409.39	2378.40	N/A	MAS = 10.00 (m)	0.00	0.00				Surface	Pass
	2411.11	32.81	2409.20	2378.30	23265.91	MAS = 10.00 (m)	4.00	4.00				MinPt-O-SF	
	1470.39	46.89	1438.60	1423.50	48.65	OSF1.50	6300.00	6018.92				MinPt-CtCt	
	1470.75	47.92	1438.27	1422.83	47.58	OSF1.50	6420.00	6132.71				MINPT-O-EOU	
	1470.89	48.09	1438.30	1422.80	47.41	OSF1.50	6440.00	6151.68				MinPt-O-ADP	
	514.11	61.59	472.52	452.52	12.82	OSF1.50	8720.00	7221.06				MinPts	
	6567.68	52.49	6532.15	6515.19	193.57	OSF1.50	15266.50	7195.00				TD	
UPRC 21-13H6 GYRO 0' to 7440' - AB (Def Survey)													
	4643.64	32.81	4641.83	4610.84	N/A	MAS = 10.00 (m)	0.00	0.00				Surface	Pass
	4643.55	32.81	4641.64	4610.74	46096.60	MAS = 10.00 (m)	4.00	4.00				MinPt-O-SF	
	4642.41	32.81	4640.34	4609.60	18002.13	MAS = 10.00 (m)	110.00	110.00				MinPts	
	4642.61	32.81	4639.87	4609.80	4990.65	MAS = 10.00 (m)	250.00	250.00				MINPT-O-EOU	
	4642.48	32.81	4639.70	4609.68	4760.17	MAS = 10.00 (m)	300.00	300.00				MinPt-O-SF	
	550.79	113.56	473.73	437.14	7.47	OSF1.50	10950.00	7212.19				MinPt-CtCt	
	550.88	113.96	473.67	436.92	7.44	OSF1.50	10960.00	7212.15				MINPT-O-EOU	
	551.23	114.32	473.80	436.91	7.42	OSF1.50	10970.00	7212.11				MinPt-O-ADP	
	555.71	115.68	477.51	440.03	7.37	OSF1.50	11020.00	7211.91				MinPt-O-SF	
	4355.96	66.97	4310.77	4288.98	99.92	OSF1.50	15266.50	7195.00				TD	
HSR-Wiedeman 14-20 GYRO 0' to 7527' - AB (Def Survey)													
	2618.62	32.81	2616.81	2585.81	N/A	MAS = 10.00 (m)	0.00	0.00				Surface	Pass
	2618.59	32.81	2616.74	2585.78	74612.52	MAS = 10.00 (m)	4.00	4.00				MinPt-O-SF	
	2617.79	32.81	2614.87	2584.99	2362.47	MAS = 10.00 (m)	300.00	300.00				MinPt-O-SF	
	2085.51	32.81	2074.36	2052.70	223.36	MAS = 10.00 (m)	2420.00	2339.61				MinPt-O-SF	
	573.37	52.38	537.27	520.96	17.49	OSF1.50	7380.00	6999.59				MinPts	
	574.27	52.41	538.17	521.86	17.50	OSF1.50	7410.00	7020.32				MinPt-O-SF	
	8033.75	60.04	7993.19	7973.71	206.17	OSF1.50	15266.50	7195.00				TD	
HSR-Wiedeman 9-20 GYRO 0' to 7473' - AB (Def Survey)													
	2911.87	32.81	2910.06	2879.07	N/A	MAS = 10.00 (m)	0.00	0.00				Surface	Pass
	2911.77	32.81	2909.84	2878.96	25222.41	MAS = 10.00 (m)	4.00	4.00				MinPt-O-SF	
	2908.83	32.81	2905.96	2876.02	2739.24	MAS = 10.00 (m)	300.00	300.00				MinPt-O-SF	
	2463.75	40.27	2436.37	2423.48	95.51	OSF1.50	5620.00	5374.09				MinPt-CtCt	
	2463.94	40.83	2436.18	2423.10	94.16	OSF1.50	5690.00	5440.47				MINPT-O-EOU	
	2464.15	41.07	2436.23	2423.07	93.59	OSF1.50	5720.00	5468.92				MinPt-O-ADP	
	2465.14	42.43	2436.32	2422.71	90.51	OSF1.50	5880.00	5620.64				MINPT-O-EOU	
	2465.54	43.64	2435.91	2421.89	87.91	OSF1.50	6010.00	5743.92				MinPt-CtCt	
	2465.68	44.08	2435.79	2421.60	87.02	OSF1.50	6060.00	5791.33				MINPT-O-EOU	
	2465.89	44.34	2435.80	2421.55	86.50	OSF1.50	6090.00	5819.78				MinPt-O-ADP	
	753.98	79.76	700.27	674.22	14.44	OSF1.50	9690.00	7217.20				MinPts	
	754.00	79.77	700.28	674.23	14.44	OSF1.50	9700.00	7217.16				MinPt-O-SF	
	5621.50	51.74	5586.47	5569.76	168.15	OSF1.50	15266.50	7195.00				TD	
Wiedeman 25-20 GYRO 0' to 7638' - AB (Def Survey)													
	1749.90	32.81	1748.09	1717.09	N/A	MAS = 10.00 (m)	0.00	0.00				Surface	Pass
	1749.81	32.81	1747.89	1717.00	17275.67	MAS = 10.00 (m)	4.00	4.00				MinPt-O-SF	
	828.89	32.81	806.68	796.06	40.18	MAS = 10.00 (m)	3650.00	3505.99				MinPts	
	828.90	32.81	806.65	796.09	40.10	MAS = 10.00 (m)	3660.00	3515.47				MINPT-O-EOU	
	887.58	38.98	861.06	848.60	35.56	OSF1.50	4420.00	4236.16				MinPt-O-SF	
	1608.39	60.49	1567.52	1547.90	40.93	OSF1.50	8170.00	7223.25				MinPt-O-SF	
	7565.37	65.78	7520.98	7499.59	176.80	OSF1.50	15266.50	7195.00				TD	
HSR-Wiedeman 10-20 GYRO 0' to 7535' - AB (Def Survey)													
	1631.76	32.81	1629.95	1598.95	N/A	MAS = 10.00 (m)	0.00	0.00				Surface	Pass
	1631.66	32.81	1629.73	1598.85	14287.81	MAS = 10.00 (m)	4.00	4.00				MinPt-O-SF	
	1630.08	32.81	1627.18	1597.27	1499.35	MAS = 10.00 (m)	300.00	300.00				MinPt-O-SF	
	1052.56	32.81	1031.37	1019.75	53.67	MAS = 10.00 (m)	4610.00	4416.33				MinPts	
	1052.61	32.81	1031.33	1019.80	53.42	MAS = 10.00 (m)	4630.00	4435.30				MINPT-O-EOU	
	1263.21	47.97	1230.70	1215.24	40.81	OSF1.50	6865.48	6555.15				MinPt-O-SF	
	1010.81	54.23	974.13	956.59	28.77	OSF1.50	8270.00	7222.86				MinPts	
	1017.20	54.97	980.02	962.24	28.55	OSF1.50	8380.00	7222.42				MinPt-O-SF	
	7072.59	50.92	7038.11	7021.67	215.09	OSF1.50	15266.50	7195.00				TD	
Bensler J 29-27D GYRO 0' to 7588' - PR (Def Survey)													
	4270.25	32.81	4268.44	4237.44	N/A	MAS = 10.00 (m)	0.00	0.00				Surface	Pass
	4270.19	32.81	4268.31	4237.38	65819.57	MAS = 10.00 (m)	4.00	4.00				MinPt-O-SF	
	4266.26	32.81	4263.22	4233.46	9470.10	MAS = 10.00 (m)	300.00	300.00				MinPt-O-SF	
	1071.03	74.57	1019.97	996.46	22.69	OSF1.50	8880.00	7220.03				MinPt-CtCt	
	1071.14	75.03	1019.79	996.11	22.54	OSF1.50	9000.00	7219.95				MINPT-O-EOU	
	1071.33	75.26	1019.63	996.07	22.46	OSF1.50	9010.00	7219.91				MinPt-O-ADP	
	1111.13	80.68	1056.23	1030.46	21.49	OSF1.50	9280.00	7218.83				MinPt-O-SF	
	6372.99	79.24	6319.63	6293.75	123.10	OSF1.50	15266.50	7195.00				TD	
Wiedeman PMJ 21-9 GYRO 0' to 7490' - AB (Def Survey)													
	7942.63	32.81	7940.82	7909.82	N/A	MAS = 10.00 (m)	0.00	0.00				Surface	Pass

Offset Trajectory	Separation			Allow Dev. (ft)	Sep. Fact.	Controlling Rule	Reference Trajectory		Risk Level			Alert	Status
	Ct-Ct (ft)	MAS (ft)	EOU (ft)				MD (ft)	TVD (ft)	Alert	Minor	Major		
	7942.57	32.81	7940.69	7909.76	114918.69	MAS = 10.00 (m)	4.00	4.00				MinPt-O-SF	
	7941.30	32.81	7938.46	7908.49	7753.35	MAS = 10.00 (m)	300.00	300.00				MinPt-O-SF	
	7805.70	35.37	7781.59	7770.33	346.73	OSF1.50	4980.00	4776.68				MinPt-CtCt	
	7805.84	35.81	7781.43	7770.02	342.20	OSF1.50	5050.00	4833.58				MINPT-O-EOU	
	7806.01	36.03	7781.46	7769.95	340.06	OSF1.50	5080.00	4862.02				MinPt-O-ADP	
	7807.07	37.32	7781.66	7769.76	327.86	OSF1.50	5270.00	5042.20				MINPT-O-EOU	
	7807.31	37.60	7781.71	7769.71	325.24	OSF1.50	5310.00	5080.13				MinPt-O-ADP	
	7809.73	43.67	7780.08	7766.06	278.40	OSF1.50	6060.00	5791.33				MinPt-CtCt	
	7799.08	49.88	7765.29	7749.20	242.30	OSF1.50	6730.00	6426.68				MinPt-CtCt	
	7799.27	50.45	7765.11	7748.83	239.48	OSF1.50	6800.00	6493.06				MINPT-O-EOU	
	7799.53	50.77	7765.15	7748.76	237.90	OSF1.50	6840.00	6530.99				MinPt-O-ADP	
	1183.64	210.31	1042.90	973.34	8.50	OSF1.50	14990.00	7196.10				MinPt-CtCt	
	1183.66	210.42	1042.85	973.24	8.49	OSF1.50	15000.00	7196.06				MinPts	
	1184.22	210.67	1043.24	973.55	8.48	OSF1.50	15030.00	7195.94				MinPt-O-SF	
	1214.84	208.38	1075.38	1006.46	8.80	OSF1.50	15266.50	7195.00				TD	
Wiedeman-PM J21-10 GYRO 0' to 7495' - AB (Def Survey)													Pass
	6717.45	32.81	6715.64	6684.64	N/A	MAS = 10.00 (m)	0.00	0.00				Surface	
	6717.38	32.81	6715.49	6684.57	84932.07	MAS = 10.00 (m)	4.00	4.00				MinPt-O-SF	
	6716.50	32.81	6714.25	6683.55	22223.24	MAS = 10.00 (m)	120.00	120.00				MinPts	
	6716.56	32.81	6713.79	6683.69	7200.68	MAS = 10.00 (m)	250.00	250.00				MINPT-O-EOU	
	6649.72	32.81	6637.13	6616.91	605.75	MAS = 10.00 (m)	300.00	300.00				MinPts	
	6622.51	32.81	6609.18	6589.71	566.20	MAS = 10.00 (m)	2690.00	2595.65				MinPt-O-SF	
	6581.05	32.81	6563.05	6548.25	401.50	MAS = 10.00 (m)	4000.00	3837.89				MinPts	
	6581.17	32.81	6562.95	6548.36	395.97	MAS = 10.00 (m)	4050.00	3885.30				MINPT-O-EOU	
	6581.30	32.81	6561.82	6548.49	368.27	MAS = 10.00 (m)	4330.00	4150.82				MinPts	
	6542.14	35.94	6517.55	6506.11	285.81	OSF1.50	5320.00	5089.61				MinPt-CtCt	
	6542.33	36.24	6517.45	6505.90	283.28	OSF1.50	5360.00	5127.54				MINPT-O-EOU	
	6542.33	36.47	6517.48	6505.86	281.41	OSF1.50	5390.00	5155.99				MinPt-O-ADP	
	1207.60	177.53	1088.71	1030.07	10.28	OSF1.50	13760.00	7201.00				MinPt-CtCt	
	1207.67	177.65	1088.70	1030.02	10.28	OSF1.50	13770.00	7200.96				MinPts	
	1208.75	178.00	1089.55	1030.75	10.27	OSF1.50	13810.00	7200.80				MinPt-O-SF	
	1932.89	128.78	1846.50	1804.11	22.78	OSF1.50	15266.50	7195.00				TD	
Stugart 3-20 Blind 0' to 7580' - PR (Def Survey)													Pass
	1269.39	32.81	1267.55	1236.58	47796.70	MAS = 10.00 (m)	0.00	0.00				Surface	
	1269.39	32.81	1267.44	1236.58	9635.66	MAS = 10.00 (m)	4.00	4.00				WRP	
	1269.39	32.81	1258.33	1236.58	137.15	MAS = 10.00 (m)	250.00	250.00				MinPts	
	1271.87	32.81	1255.98	1239.06	90.19	MAS = 10.00 (m)	370.00	369.96				MINPT-O-EOU	
	3417.25	428.31	3131.18	2988.94	12.01	OSF1.50	7580.00	7121.03				MinPt-O-SF	
	8672.66	436.08	8381.40	8236.58	29.94	OSF1.50	15266.50	7195.00				TD	
Barnett 5-20 Blind 0' to 7622' - PR (Def Survey)													Pass
	1318.54	32.81	1316.05	1285.73	1939.37	MAS = 10.00 (m)	0.00	0.00				Surface	
	1318.54	32.81	1315.97	1285.73	1736.08	MAS = 10.00 (m)	4.00	4.00				WRP	
	1318.54	32.81	1307.35	1285.73	140.37	MAS = 10.00 (m)	250.00	250.00				MinPts	
	1329.39	63.16	1286.69	1266.23	32.46	OSF1.50	1050.00	1039.64				MINPT-O-EOU	
	1338.63	74.14	1288.59	1264.48	27.72	OSF1.50	1240.00	1220.65				MinPt-O-ADP	
	2446.86	401.14	2178.90	2045.72	9.18	OSF1.50	6960.00	6644.43				MinPt-O-SF	
	9663.87	433.63	9374.25	9230.24	33.55	OSF1.50	15266.50	7195.00				TD	
Lundvall 12-20 MWD 0' to 7703' - PR (Def Survey)													Pass
	2336.58	32.81	2334.77	2303.77	N/A	MAS = 10.00 (m)	0.00	0.00				Surface	
	2336.56	32.81	2334.73	2303.75	124915.44	MAS = 10.00 (m)	4.00	4.00				MinPt-O-SF	
	1344.25	37.08	1318.97	1307.17	56.91	OSF1.50	4700.00	4501.68				MinPt-CtCt	
	1344.33	37.28	1318.92	1307.05	56.56	OSF1.50	4720.00	4520.64				MINPT-O-EOU	
	1344.42	37.38	1318.94	1307.04	56.40	OSF1.50	4730.00	4530.13				MinPt-O-ADP	
	1419.84	43.50	1390.30	1376.34	50.78	OSF1.50	5470.00	5231.85				MinPt-O-SF	
	1467.15	44.94	1436.66	1422.21	50.72	OSF1.50	5670.00	5421.51				MinPt-O-SF	
	1490.97	45.95	1459.81	1445.02	50.38	OSF1.50	5760.00	5506.85				MinPt-O-SF	
	1639.95	50.34	1605.85	1589.61	50.42	OSF1.50	6260.00	5980.99				MinPt-O-SF	
	1757.17	53.45	1721.00	1703.72	50.79	OSF1.50	6630.00	6331.85				MinPt-O-SF	
	1792.64	54.64	1755.68	1738.00	50.66	OSF1.50	6750.00	6445.64				MinPt-O-SF	
	1831.52	55.79	1793.79	1775.72	50.65	OSF1.50	6890.00	6578.39				MinPt-O-SF	
	9684.96	59.65	9644.66	9625.31	250.24	OSF1.50	15266.50	7195.00				TD	
SW Greeley 31-20 MWD 0' to 7695' - PR (Def Survey)													Pass
	1349.04	32.81	1347.15	1316.23	17105.90	MAS = 10.00 (m)	0.00	0.00				Surface	
	1349.04	32.81	1347.14	1316.23	15356.89	MAS = 10.00 (m)	4.00	4.00				WRP	
	1348.74	32.81	1345.51	1315.93	952.54	MAS = 10.00 (m)	320.00	319.99				MinPts	
	1349.07	32.81	1345.31	1316.26	690.26	MAS = 10.00 (m)	490.00	489.72				MINPT-O-EOU	
	1349.21	32.81	1345.31	1316.40	643.32	MAS = 10.00 (m)	520.00	519.60				MINPT-O-EOU	
	1470.32	32.81	1458.44	1437.51	143.00	MAS = 10.00 (m)	1900.00	1846.51				MinPt-O-SF	
	1976.69	32.81	1961.81	1943.88	148.76	MAS = 10.00 (m)	3460.00	3325.82				MinPt-O-SF	
	3293.44	52.16	3258.13	3241.28	97.66	OSF1.50	6930.00	6616.21				MinPt-O-SF	
	3341.42	52.88	3305.63	3288.54	97.71	OSF1.50	7060.00	6736.97				MinPt-O-SF	
	10376.02	68.18	10330.03	10307.84	233.75	OSF1.50	15266.50	7195.00				TD	
Wiedeman 24-20 GYRO 0' to 7660' - AB (Def Survey)													Pass
	1657.62	32.81	1655.80	1624.81	N/A	MAS = 10.00 (m)	0.00	0.00				Surface	
	1657.51	32.81	1655.59	1624.71	15113.13	MAS = 10.00 (m)	4.00	4.00				MinPt-O-SF	
	1365.38	32.81	1350.61	1332.67	103.58	MAS = 10.00 (m)	2540.00	2453.41				MinPts	
	1365.42	32.81	1350.55	1332.61	102.77	MAS = 10.00 (m)	2560.00	2472.37				MINPT-O-EOU	
	1652.78	35.46	1628.60	1617.31	73.18	OSF1.50	4430.00	4245.64				MinPt-O-SF	
	1667.73	35.78	1643.34	1631.95	73.14	OSF1.50	4480.00	4293.06				MinPt-O-SF	
	2168.99	52.31	2133.58	2116.68	64.12	OSF1.50	6865.48	6555.15				MinPt-O-SF	
	2174.57	52.45	2139.07	2122.12	64.11	OSF1.50	6900.00	6587.86				MinPt-O-SF	
	1607.49	70.06	1560.25	1537.43	35.19	OSF1.50	8930.00	7220.23				MinPt-CtCt	
	1607.56	70.32	1560.14	1537.24	35.05	OSF1.50	8950.00	7220.15				MINPT-O-EOU	
	1607.69	70.46	1560.19	1537.24	34.99	OSF1.50	8960.00	7220.11				MinPt-O-ADP	
	1640.20	73.81	1590.46	1566.39	34.04	OSF1.50	9260.00	7218.91				MinPt-O-SF	
	6532.98	66.35	6488.21	6466.63	151.30	OSF1.50	15266.50	7195.00				TD	
Wiedeman 40-20 GYRO 0' to 7935' - AB (Def Survey)													Pass
	1771.11	32.81	1769.30	1738.30	N/A	MAS = 10.00 (m)	0.00	0.00				Surface	
	1771.02	32.81	1769.10	1738.21	16834.19	MAS = 10.00 (m)	4.00	4.00				MinPt-O-SF	
	1767.55	32.81	1764.37	1734.75	1266.05	MAS = 10.00 (m)	300.00	300.00				MinPt-O-SF	
	1680.67	32.81	1668.78	1647.87	165.67	MAS = 10.00 (m)	1760.00	1713.75				MinPts	

Offset Trajectory	Separation			Allow Dev. (ft)	Sep. Fact.	Controlling Rule	Reference Trajectory		Risk Level			Alert	Status
	Ct-Ct (ft)	MAS (ft)	EOU (ft)				MD (ft)	TVD (ft)	Alert	Minor	Major		
	1680.77	32.81	1668.56	1647.97	161.40	MAS = 10.00 (m)	1790.00	1742.20				MINPT-O-EOU	
	2075.03	32.81	2054.88	2042.22	111.79	MAS = 10.00 (m)	3780.00	3629.27				MinPt-O-SF	
	2251.74	32.81	2229.66	2218.93	109.85	MAS = 10.00 (m)	4220.00	4046.51				MinPt-O-SF	
	2431.91	34.83	2408.15	2397.08	109.73	OSF1.50	4630.00	4435.30				MinPt-O-SF	
	2631.51	39.06	2604.93	2592.45	105.33	OSF1.50	5080.00	4862.02				MinPt-O-SF	
	3207.34	50.30	3173.28	3157.05	98.75	OSF1.50	6350.00	6066.33				MinPt-O-SF	
	3415.31	61.38	3373.86	3353.93	85.66	OSF1.50	6930.00	6616.21				MinPt-O-ADP	
	1546.78	118.86	1467.01	1427.92	19.77	OSF1.50	10430.00	7214.26				MinPt-CtCt	
	1546.95	119.22	1466.93	1427.73	19.71	OSF1.50	10450.00	7214.18				MinPts	
	1561.35	121.90	1479.55	1439.45	19.45	OSF1.50	10640.00	7213.42				MinPt-O-SF	
	5078.71	90.72	5017.69	4987.99	85.46	OSF1.50	15266.50	7195.00				TD	
Meyer 4 GYRO 0' to 8410' - PR (Def Survey)													Pass
	3862.77	32.81	3860.95	3829.96	N/A	MAS = 10.00 (m)	0.00	0.00				Surface	
	3862.74	32.81	3860.91	3829.93	159395.57	MAS = 10.00 (m)	4.00	4.00				MinPt-O-SF	
	3859.91	32.81	3856.61	3827.10	2600.56	MAS = 10.00 (m)	300.00	300.00				MinPt-O-SF	
	3859.79	32.81	3856.49	3826.98	2594.68	MAS = 10.00 (m)	340.00	339.99				MinPts	
	1686.38	141.20	1591.69	1545.16	18.10	OSF1.50	11890.00	7208.44				MinPt-CtCt	
	1686.39	141.28	1591.67	1545.11	18.09	OSF1.50	11900.00	7208.40				MinPts	
	1689.28	141.87	1594.17	1547.41	18.05	OSF1.50	11990.00	7208.04				MinPt-O-SF	
	3773.45	105.96	3702.27	3667.48	54.21	OSF1.50	15266.50	7195.00				TD	
Hurst 7-20 MWD 0' to 7650' - PR (Def Survey)													Pass
	1693.53	32.81	1691.71	1660.72	N/A	MAS = 10.00 (m)	0.00	0.00				Surface	
	1693.49	32.81	1691.63	1660.68	43193.94	MAS = 10.00 (m)	4.00	4.00				MinPt-O-SF	
	1693.42	32.81	1690.42	1660.61	1414.99	MAS = 10.00 (m)	250.00	250.00				MinPts	
	1693.46	32.81	1690.39	1660.65	1345.26	MAS = 10.00 (m)	270.00	270.00				MINPT-O-EOU	
	1745.23	32.81	1739.01	1712.42	395.48	MAS = 10.00 (m)	970.00	962.44				MinPt-O-SF	
	1754.45	32.81	1748.26	1721.64	400.66	MAS = 10.00 (m)	1040.00	1030.03				MinPt-O-SF	
	2413.25	52.20	2377.92	2361.05	71.50	OSF1.50	6865.48	6555.15				MinPt-O-SF	
	2465.56	52.85	2429.79	2412.71	72.12	OSF1.50	7190.00	6851.41				MinPt-O-SF	
	2324.04	61.21	2282.70	2262.83	58.45	OSF1.50	8460.00	7222.10				MinPt-CtCt	
	2324.08	61.32	2282.67	2262.76	58.33	OSF1.50	8470.00	7222.06				MINPT-O-EOU	
	2324.17	61.44	2282.67	2262.73	58.23	OSF1.50	8480.00	7222.02				MinPt-O-ADP	
	2459.21	69.92	2412.06	2389.29	53.96	OSF1.50	9260.00	7218.91				MinPt-O-SF	
	7195.72	77.29	7143.66	7118.43	142.58	OSF1.50	15266.50	7195.00				TD	
Hurst 8-20 MWD 0' to 7840' - PR (Def Survey)													Pass
	1715.11	32.81	1713.30	1682.30	N/A	MAS = 10.00 (m)	0.00	0.00				Surface	
	1715.07	32.81	1713.22	1682.26	45646.09	MAS = 10.00 (m)	4.00	4.00				MinPt-O-SF	
	1713.20	32.81	1710.23	1680.39	1478.06	MAS = 10.00 (m)	280.00	280.00				MinPts	
	1713.20	32.81	1710.22	1680.39	1460.80	MAS = 10.00 (m)	290.00	290.00				MINPT-O-EOU	
	1713.23	32.81	1710.23	1680.42	1443.73	MAS = 10.00 (m)	300.00	300.00				MinPt-O-SF	
	1713.45	32.81	1710.45	1680.64	1443.70	MAS = 10.00 (m)	330.00	329.99				MinPt-O-SF	
	3262.42	65.96	3217.91	3196.46	76.01	OSF1.50	6890.00	6578.39				MinPt-O-SF	
	2470.11	87.71	2411.10	2382.40	43.00	OSF1.50	9650.00	7217.36				MinPt-CtCt	
	2470.16	87.94	2410.99	2382.21	42.89	OSF1.50	9670.00	7217.28				MINPT-O-EOU	
	2470.25	88.06	2411.00	2382.18	42.83	OSF1.50	9680.00	7217.24				MinPt-O-ADP	
	2534.19	93.50	2471.32	2440.68	41.34	OSF1.50	10220.00	7215.09				MinPt-O-SF	
	6126.33	93.91	6063.20	6032.43	99.53	OSF1.50	15266.50	7195.00				TD	
Greeley 21-20 Blind 0' to 7619' - PR (Def Survey)													Pass
	1735.72	32.81	1733.91	1702.91	N/A	MAS = 10.00 (m)	0.00	0.00				Surface	
	1735.68	32.81	1733.83	1702.88	44194.78	MAS = 10.00 (m)	4.00	4.00				MinPt-O-SF	
	1735.62	32.81	1726.06	1702.81	223.83	MAS = 10.00 (m)	250.00	250.00				MinPts	
	1739.69	32.81	1722.18	1706.88	110.69	MAS = 10.00 (m)	450.00	449.84				MINPT-O-EOU	
	3251.86	434.12	2961.91	2817.74	11.27	OSF1.50	8530.00	7221.82				MinPt-CtCt	
	3251.86	434.13	2961.90	2817.73	11.27	OSF1.50	8540.00	7221.78				MinPts	
	3252.04	434.17	2962.06	2817.87	11.27	OSF1.50	8570.00	7221.66				MinPt-O-SF	
	7475.77	436.36	7184.33	7039.41	25.79	OSF1.50	15266.50	7195.00				TD	
Greeley 21-20 MWD 0' to 7619' - PR (Def Survey)													Pass
	1736.20	32.81	1734.39	1703.40	N/A	MAS = 10.00 (m)	0.00	0.00				Surface	
	1736.20	32.81	1734.38	1703.39	663314.26	MAS = 10.00 (m)	4.00	4.00				WRP	
	1736.20	32.81	1733.31	1703.39	1609.48	MAS = 10.00 (m)	250.00	250.00				MinPts	
	1736.21	32.81	1733.29	1703.40	1571.09	MAS = 10.00 (m)	260.00	260.00				MINPT-O-EOU	
	1791.29	32.81	1785.35	1758.49	433.18	MAS = 10.00 (m)	990.00	981.80				MinPt-O-SF	
	1862.42	32.81	1851.05	1829.61	190.55	MAS = 10.00 (m)	1900.00	1846.51				MinPt-O-SF	
	2787.49	51.43	2752.67	2736.06	83.87	OSF1.50	6900.00	6587.86				MinPt-O-SF	
	2836.79	52.15	2801.49	2784.64	84.14	OSF1.50	7100.00	6773.03				MinPt-O-SF	
	2867.17	52.84	2831.41	2814.33	83.89	OSF1.50	7280.00	6924.96				MinPt-O-SF	
	3188.98	67.56	3143.40	3121.41	72.49	OSF1.50	9240.00	7218.99				MinPt-O-SF	
	7887.64	80.39	7833.51	7807.25	150.14	OSF1.50	15266.50	7195.00				TD	
Greeley 17-20 MWD 0' to 7675' - PR (Def Survey)													Pass
	1756.94	32.81	1755.13	1724.13	N/A	MAS = 10.00 (m)	0.00	0.00				Surface	
	1756.94	32.81	1755.12	1724.13	679263.01	MAS = 10.00 (m)	4.00	4.00				WRP	
	1756.93	32.81	1754.04	1724.13	1628.36	MAS = 10.00 (m)	250.00	250.00				MinPts	
	1756.94	32.81	1754.03	1724.14	1589.50	MAS = 10.00 (m)	260.00	260.00				MINPT-O-EOU	
	1798.32	32.81	1792.55	1765.51	454.51	MAS = 10.00 (m)	880.00	874.93				MinPt-O-SF	
	2011.86	32.81	2000.20	1979.06	199.85	MAS = 10.00 (m)	1900.00	1846.51				MinPt-O-SF	
	2052.58	32.81	2040.78	2019.77	201.12	MAS = 10.00 (m)	2060.00	1998.23				MinPt-O-SF	
	3384.44	53.11	3348.50	3331.34	98.52	OSF1.50	6900.00	6587.86				MinPt-O-SF	
	3398.81	53.35	3362.71	3345.46	98.48	OSF1.50	6970.00	6653.80				MinPt-O-SF	
	3012.84	71.91	2964.37	2940.93	64.25	OSF1.50	9210.00	7219.11				MinPt-CtCt	
	3012.98	72.36	2964.20	2940.62	63.84	OSF1.50	9240.00	7218.99				MINPT-O-EOU	
	3013.24	72.66	2964.26	2940.58	63.58	OSF1.50	9260.00	7218.91				MinPt-O-ADP	
	3234.87	87.20	3176.21	3147.69	56.66	OSF1.50	10390.00	7214.42				MinPt-O-SF	
	6760.39	95.93	6695.90	6664.46	107.48	OSF1.50	15266.50	7195.00				TD	
Greeley 27-20 GYRO 0' to 7712' - PR (Def Survey)													Pass
	1778.45	32.81	1776.64	1745.64	N/A	MAS = 10.00 (m)	0.00	0.00				Surface	
	1778.41	32.81	1776.57	1745.61	51137.59	MAS = 10.00 (m)	4.00	4.00				MinPt-O-SF	
	1778.02	32.81	1775.48	1745.21	2459.97	MAS = 10.00 (m)	190.00	190.00				MinPts	
	1778.07	32.81	1775.29	1745.26	1832.68	MAS = 10.00 (m)	250.00	250.00				MinPts	
	2100.13	32.81	2089.10	2067.32	222.50	MAS = 10.00 (m)	1900.00	1846.51				MinPt-O-SF	
	4335.33	73.71	4285.65	4261.61	90.15								

Offset Trajectory	Separation			Allow Dev. (ft)	Sep. Fact.	Controlling Rule	Reference Trajectory		Risk Level			Alert	Status
	Ct-Ct (ft)	MAS (ft)	EOU (ft)				MD (ft)	TVD (ft)	Alert	Minor	Major		
	7616.77	122.95	7534.27	7493.82	94.13	OSF1.50	15266.50	7195.00				TD	
SW Greeley 18-20 MWD 0' to 7700' - PR (Def Survey)													Pass
	1849.14	32.81	1847.25	1816.33	26600.17	MAS = 10.00 (m)	0.00	0.00				Surface	
	1849.14	32.81	1847.24	1816.33	23582.57	MAS = 10.00 (m)	4.00	4.00				WRP	
	1849.14	32.81	1846.11	1816.33	1521.95	MAS = 10.00 (m)	250.00	250.00				MinPts	
	1849.15	32.81	1846.09	1816.34	1483.90	MAS = 10.00 (m)	260.00	260.00				MINPT-O-EOU	
	2098.99	32.81	2088.11	2066.18	226.24	MAS = 10.00 (m)	1900.00	1846.51				MinPt-O-SF	
	2970.71	52.57	2935.13	2918.14	87.38	OSF1.50	6900.00	6587.86				MinPt-O-SF	
	9374.10	75.92	9322.95	9298.18	189.18	OSF1.50	15266.50	7195.00				TD	
Barnett 1-20 GYRO 0' to 7625' - PR (Def Survey)													Pass
	1882.98	32.81	1881.09	1850.18	22580.46	MAS = 10.00 (m)	0.00	0.00				MinPts	
	1882.99	32.81	1881.08	1850.18	19988.69	MAS = 10.00 (m)	4.00	4.00				WRP	
	1883.10	32.81	1881.05	1850.29	7870.99	MAS = 10.00 (m)	50.00	50.00				MINPT-O-EOU	
	1883.85	32.81	1880.78	1851.04	1490.15	MAS = 10.00 (m)	250.00	250.00				MINPT-O-EOU	
	1883.94	32.81	1880.83	1851.13	1448.58	MAS = 10.00 (m)	270.00	270.00				MinPt-O-SF	
	2174.13	32.81	2163.32	2141.32	235.90	MAS = 10.00 (m)	1900.00	1846.51				MinPt-O-SF	
	3561.52	48.77	3528.47	3512.75	113.22	OSF1.50	6900.00	6587.86				MinPt-O-SF	
	10124.58	76.05	10073.35	10048.54	203.97	OSF1.50	15266.50	7195.00				TD	
Hayes 2-20 Blind 0' to 7627' - PR (Def Survey)													Pass
	1962.60	32.81	1960.79	1929.79	N/A	MAS = 10.00 (m)	0.00	0.00				Surface	
	1962.58	32.81	1960.76	1929.78	175866.61	MAS = 10.00 (m)	4.00	4.00				WRP	
	1962.58	32.81	1952.50	1929.77	237.11	MAS = 10.00 (m)	250.00	250.00				MinPts	
	1965.91	32.81	1949.08	1933.10	130.56	MAS = 10.00 (m)	420.00	419.90				MINPT-O-EOU	
	3540.30	434.80	3249.89	3105.49	12.25	OSF1.50	8580.00	7221.62				MinPt-CtCt	
	3540.30	434.82	3249.89	3105.48	12.25	OSF1.50	8590.00	7221.58				MinPts	
	3540.59	434.88	3250.14	3105.71	12.25	OSF1.50	8630.00	7221.42				MinPt-O-SF	
	7562.30	438.33	7269.54	7123.97	25.97	OSF1.50	15266.50	7195.00				TD	
Meyer 3 GYRO 0' to 7745' - AB (Def Survey)													Pass
	3849.49	32.81	3847.67	3816.68	N/A	MAS = 10.00 (m)	0.00	0.00				Surface	
	3849.46	32.81	3847.63	3816.65	163132.57	MAS = 10.00 (m)	4.00	4.00				MinPt-O-SF	
	3849.09	32.81	3846.66	3816.26	6350.64	MAS = 10.00 (m)	170.00	170.00				MinPts	
	3849.24	32.81	3846.55	3816.43	4418.45	MAS = 10.00 (m)	230.00	230.00				MINPT-O-EOU	
	3849.67	32.81	3846.85	3816.86	3834.21	MAS = 10.00 (m)	300.00	300.00				MinPt-O-SF	
	4288.51	64.72	4244.83	4223.79	101.88	OSF1.50	6900.00	6587.86				MinPt-O-SF	
	2164.25	118.58	2084.66	2045.67	27.73	OSF1.50	11100.00	7211.59				MinPt-CtCt	
	2164.40	119.11	2084.46	2045.29	27.61	OSF1.50	11130.00	7211.47				MINPT-O-EOU	
	2164.54	119.29	2084.48	2045.25	27.57	OSF1.50	11140.00	7211.43				MinPt-O-ADP	
	2203.81	124.57	2120.23	2079.24	26.86	OSF1.50	11520.00	7209.92				MinPt-O-SF	
	4688.60	110.37	4614.48	4578.22	64.64	OSF1.50	15266.50	7195.00				TD	
Lessor J 21-7X GYRO 0' to 7725' - AB (Def Survey)													Pass
	6905.72	32.81	6903.91	6872.91	N/A	MAS = 10.00 (m)	0.00	0.00				Surface	
	6905.68	32.81	6903.82	6872.87	154441.81	MAS = 10.00 (m)	4.00	4.00				MinPt-O-SF	
	6905.35	32.81	6903.39	6872.54	47080.44	MAS = 10.00 (m)	70.00	70.00				MinPts	
	6905.48	32.81	6903.31	6872.67	19420.32	MAS = 10.00 (m)	130.00	130.00				MINPT-O-EOU	
	6907.66	32.81	6904.84	6874.85	6844.92	MAS = 10.00 (m)	320.00	319.99				MinPt-O-SF	
	6818.83	54.80	6781.75	6764.03	192.30	OSF1.50	4730.00	4530.13				MinPt-CtCt	
	6818.99	55.31	6781.59	6763.68	190.46	OSF1.50	4800.00	4596.51				MINPT-O-EOU	
	6818.65	57.78	6779.59	6760.87	182.11	OSF1.50	5050.00	4833.58				MinPt-CtCt	
	6818.77	58.16	6779.45	6760.61	180.84	OSF1.50	5110.00	4890.47				MINPT-O-EOU	
	6818.92	58.34	6779.49	6760.55	180.25	OSF1.50	5140.00	4918.92				MinPt-O-ADP	
	2167.17	186.55	2042.27	1980.63	17.56	OSF1.50	13890.00	7200.48				MinPt-CtCt	
	2167.27	186.91	2042.13	1980.36	17.53	OSF1.50	13910.00	7200.40				MINPT-O-EOU	
	2167.55	187.26	2042.18	1980.30	17.50	OSF1.50	13930.00	7200.32				MinPt-O-ADP	
	2181.61	190.07	2054.36	1991.54	17.35	OSF1.50	14140.00	7199.49				MinPt-O-SF	
	2567.52	183.12	2444.90	2384.40	21.20	OSF1.50	15266.50	7195.00				TD	
Hayes 1 Blind 0' to 9502' - AB (Def Survey)													Pass
	2612.99	32.81	2611.18	2580.18	N/A	MAS = 10.00 (m)	0.00	0.00				Surface	
	2612.90	32.81	2610.98	2580.09	25472.20	MAS = 10.00 (m)	4.00	4.00				MinPt-O-SF	
	2612.20	32.81	2594.19	2579.39	161.13	MAS = 10.00 (m)	520.00	519.60				MinPts	
	2631.86	98.43	2565.64	2533.43	40.83	OSF1.50	1760.00	1713.75				MINPT-O-EOU	
	2633.04	100.17	2565.66	2532.87	40.13	OSF1.50	1790.00	1742.20				MinPt-O-ADP	
	2654.20	124.79	2570.47	2529.41	32.30	OSF1.50	2230.00	2159.44				MinPt-O-ADP	
	2286.54	434.86	1996.10	1851.68	7.91	OSF1.50	9780.00	7216.84				MinPt-CtCt	
	2286.55	434.88	1996.09	1851.68	7.91	OSF1.50	9790.00	7216.80				MinPts	
	2286.85	434.97	1996.33	1851.88	7.91	OSF1.50	9820.00	7216.68				MinPt-O-SF	
	5941.81	431.92	5653.33	5509.89	20.71	OSF1.50	15266.50	7195.00				TD	
Meyer 1 Blind 0' to 7482' - AB (Def Survey)													Pass
	5241.11	32.81	5239.29	5208.30	N/A	MAS = 10.00 (m)	0.00	0.00				Surface	
	5241.05	32.81	5239.16	5208.24	76665.54	MAS = 10.00 (m)	4.00	4.00				MinPt-O-SF	
	5239.13	57.35	5200.29	5181.78	141.44	OSF1.50	1070.00	1058.85				MinPt-CtCt	
	5276.72	170.51	5162.52	5106.21	46.85	OSF1.50	3060.00	2946.51				MINPT-O-EOU	
	5325.59	229.13	5172.31	5096.47	35.10	OSF1.50	4090.00	3923.23				MinPt-O-ADP	
	2304.55	448.73	2004.86	1855.82	7.73	OSF1.50	12410.00	7206.37				MinPt-CtCt	
	2304.57	448.78	2004.84	1855.78	7.72	OSF1.50	12420.00	7206.33				MinPts	
	2305.30	449.05	2005.40	1856.25	7.72	OSF1.50	12470.00	7206.13				MinPt-O-SF	
	3669.27	442.52	3373.72	3226.75	12.48	OSF1.50	15266.50	7195.00				TD	
Lessor 7-21 Blind 0' to 7508' - AB (Def Survey)													Pass
	6558.79	32.81	6556.97	6525.98	N/A	MAS = 10.00 (m)	0.00	0.00				Surface	
	6558.72	32.81	6556.84	6525.92	96664.61	MAS = 10.00 (m)	4.00	4.00				MinPt-O-SF	
	6555.77	66.62	6510.75	6489.14	151.68	OSF1.50	1250.00	1230.13				MinPt-CtCt	
	6603.00	207.46	6464.16	6395.54	48.10	OSF1.50	3730.00	3581.85				MINPT-O-EOU	
	6664.31	281.01	6476.43	6383.30	35.77	OSF1.50	5020.00	4805.13				MinPt-O-ADP	
	2313.11	459.04	2006.55	1854.07	7.58	OSF1.50	13730.00	7201.12				MinPt-CtCt	
	2313.14	459.11	2006.53	1854.03	7.58	OSF1.50	13740.00	7201.08				MinPts	
	2314.21	459.50	2007.34	1854.71	7.58	OSF1.50	13800.00	7200.84				MinPt-O-SF	
	2777.53	456.80	2472.46	2320.73	9.15	OSF1.50	15266.50	7195.00				TD	
Lessor J 21-8 - Plan (Def Plan)													Pass
	6947.02	32.81	6945.20	6914.21	N/A	MAS = 10.00 (m)	0.00	0.00				Surface	
	6946.98	32.81	6945.14	6914.17	198815.91	MAS = 10.00 (m)	4.00	4.00				MinPt-O-SF	

Offset Trajectory	Separation			Allow Dev. (ft)	Sep. Fact.	Controlling Rule	Reference Trajectory		Risk Level			Alert	Status	
	Ct-Ct (ft)	MAS (ft)	EOU (ft)				MD (ft)	TVD (ft)	Alert	Minor	Major			
Meyer 5 GYRO 0' to 7665' - AB (Def Survey)	6946.77	32.81	6943.89	6913.96	6485.39	MAS = 10.00 (m)	250.00	250.00				MinPts		
	6946.84	32.81	6943.82	6914.03	5734.31	MAS = 10.00 (m)	300.00	300.00				MINPT-O-EOU		
	7018.89	32.81	7005.34	6986.08	587.48	MAS = 10.00 (m)	1900.00	1846.51				MinPt-O-SF		
	2334.94	201.36	2200.17	2133.58	17.52	OSF1.50	14580.00	7197.73				MinPt-CiCt		
	2335.07	201.70	2200.07	2133.37	17.49	OSF1.50	14600.00	7197.65				MINPT-O-EOU		
	2335.20	201.87	2200.09	2133.33	17.48	OSF1.50	14610.00	7197.61				MinPt-O-ADP		
	2347.73	204.54	2210.84	2143.19	17.34	OSF1.50	14820.00	7196.78				MinPt-O-SF		
	2435.11	205.47	2297.59	2229.64	17.91	OSF1.50	15266.50	7195.00				TD		
													Pass	
Lesser J 21-18D MWD 0' to 7595' - SI (Def Survey)	3880.18	32.81	3878.37	3847.37	N/A	MAS = 10.00 (m)	0.00	0.00				Surface		
	3880.16	32.81	3878.32	3847.35	157852.34	MAS = 10.00 (m)	4.00	4.00				MinPt-O-SF		
	3880.10	32.81	3878.23	3847.29	65810.96	MAS = 10.00 (m)	30.00	30.00				MinPts		
	3880.55	32.81	3877.70	3847.74	3741.30	MAS = 10.00 (m)	250.00	250.00				MINPT-O-EOU		
	3880.75	32.81	3877.85	3847.95	3550.56	MAS = 10.00 (m)	300.00	300.00				MinPt-O-SF		
	2901.27	135.50	2810.40	2765.77	32.48	OSF1.50	11840.00	7208.64				MinPt-CiCt		
	2901.46	136.06	2810.22	2765.40	32.35	OSF1.50	11870.00	7208.52				MINPT-O-EOU		
	2901.75	136.42	2810.27	2765.34	32.27	OSF1.50	11890.00	7208.44				MinPt-O-ADP		
	2967.43	144.54	2870.54	2822.89	31.12	OSF1.50	12460.00	7206.17				MinPt-O-SF		
	4492.09	139.42	4398.61	4352.67	48.88	OSF1.50	15266.50	7195.00				TD		
													Pass	
	Lesser J 21-17 - Plan (Def Plan)	6749.46	32.81	6747.65	6716.65	N/A	MAS = 10.00 (m)	0.00	0.00				Surface	
		6749.43	32.81	6747.58	6716.62	179144.63	MAS = 10.00 (m)	4.00	4.00				MinPt-O-SF	
6749.19		32.81	6747.26	6716.38	54234.75	MAS = 10.00 (m)	60.00	60.00				MinPts		
6749.36		32.81	6746.59	6716.56	7049.49	MAS = 10.00 (m)	250.00	250.00				MINPT-O-EOU		
6749.54		32.81	6746.69	6716.73	6527.77	MAS = 10.00 (m)	300.00	300.00				MinPt-O-SF		
6323.43		40.41	6295.83	6283.02	246.71	OSF1.50	4970.00	4757.71				MinPt-CiCt		
6323.48		40.60	6295.75	6282.88	245.55	OSF1.50	5000.00	4786.16				MINPT-O-EOU		
6323.58		40.72	6295.77	6282.86	244.77	OSF1.50	5020.00	4805.13				MinPt-O-ADP		
2903.87		164.14	2793.91	2739.74	26.79	OSF1.50	13170.00	7203.35				MinPt-CiCt		
2904.10		164.94	2793.61	2739.16	26.66	OSF1.50	13210.00	7203.19				MINPT-O-EOU		
2904.42		165.33	2793.67	2739.09	26.59	OSF1.50	13230.00	7203.11				MinPt-O-ADP		
2953.03		172.57	2837.45	2780.47	25.90	OSF1.50	13710.00	7201.20				MinPt-O-SF		
3579.30		171.28	3464.58	3408.02	31.63	OSF1.50	15266.50	7195.00				TD		
												Pass		
Hayes 1-20 Blind 0' to 7516' - PR (Def Survey)	6925.01	32.81	6923.19	6892.20	N/A	MAS = 10.00 (m)	0.00	0.00				Surface		
	6924.97	32.81	6923.13	6892.17	195570.69	MAS = 10.00 (m)	4.00	4.00				MinPt-O-SF		
	6924.76	32.81	6921.88	6891.96	6464.38	MAS = 10.00 (m)	250.00	250.00				MinPts		
	6924.83	32.81	6921.81	6892.02	5715.71	MAS = 10.00 (m)	300.00	300.00				MINPT-O-EOU		
	6956.03	32.81	6946.76	6923.22	933.03	MAS = 10.00 (m)	1280.00	1258.58				MinPt-O-SF		
	6958.77	32.81	6946.88	6925.96	690.12	MAS = 10.00 (m)	1790.00	1742.20				MINPT-O-EOU		
	7176.66	51.64	7141.70	7125.02	215.09	OSF1.50	6900.00	6587.86				MinPt-O-SF		
	3069.61	180.35	2948.84	2889.26	25.75	OSF1.50	13850.00	7200.64				MinPt-CiCt		
	3069.88	181.15	2948.58	2888.73	25.63	OSF1.50	13890.00	7200.48				MINPT-O-EOU		
	3070.22	181.54	2948.65	2888.67	25.58	OSF1.50	13910.00	7200.40				MinPt-O-ADP		
	3116.91	188.69	2990.58	2928.22	24.98	OSF1.50	14390.00	7198.49				MinPt-O-SF		
	3381.08	191.35	3252.97	3189.72	26.72	OSF1.50	15266.50	7195.00				TD		
													Pass	
Meyer 2 GYRO 0' to 8010' - AB (Def Survey)	3075.51	32.81	3073.70	3042.70	N/A	MAS = 10.00 (m)	0.00	0.00				Surface		
	3075.50	32.81	3073.68	3042.69	483140.49	MAS = 10.00 (m)	4.00	4.00				WRP		
	3075.50	32.81	3065.70	3042.69	384.93	MAS = 10.00 (m)	250.00	250.00				MinPts		
	3080.65	32.81	3060.54	3047.84	168.29	MAS = 10.00 (m)	510.00	509.64				MINPT-O-EOU		
	3087.13	36.99	3061.86	3050.13	131.55	OSF1.50	640.00	638.80				MinPt-O-ADP		
	3643.42	438.43	3350.60	3204.99	12.51	OSF1.50	9880.00	7216.45				MinPts		
	3643.45	438.47	3350.60	3204.98	12.50	OSF1.50	9890.00	7216.41				MinPt-O-ADP		
	3644.64	438.72	3351.62	3205.92	12.50	OSF1.50	9970.00	7216.09				MinPt-O-SF		
	6506.56	442.84	6210.79	6063.71	22.11	OSF1.50	15266.50	7195.00				TD		
												Pass		
Lesser 1 Blind 0' to 7846' - AB (Def Survey)	3833.60	32.81	3831.79	3800.79	N/A	MAS = 10.00 (m)	0.00	0.00				Surface		
	3833.58	32.81	3831.74	3800.77	161788.84	MAS = 10.00 (m)	4.00	4.00				MinPt-O-SF		
	3832.68	32.81	3829.69	3799.87	3249.85	MAS = 10.00 (m)	280.00	280.00				MinPts		
	3832.70	32.81	3829.66	3799.89	3132.65	MAS = 10.00 (m)	300.00	300.00				MinPts		
	3833.93	32.81	3830.48	3801.12	2336.84	MAS = 10.00 (m)	460.00	459.81				MINPT-O-EOU		
	3838.33	32.84	3815.90	3805.49	184.30	OSF1.50	3600.00	3458.58				MinPt-CiCt		
	3838.42	33.10	3815.82	3805.32	182.75	OSF1.50	3640.00	3496.51				MINPT-O-EOU		
	3838.48	33.17	3815.83	3805.31	182.37	OSF1.50	3650.00	3505.99				MinPt-O-ADP		
	4342.84	52.53	4307.29	4290.31	127.88	OSF1.50	6900.00	6587.86				MinPt-O-SF		
	3101.86	98.54	3035.63	3003.32	47.97	OSF1.50	10530.00	7213.86				MinPt-CiCt		
	3102.10	99.27	3035.39	3002.83	47.62	OSF1.50	10570.00	7213.70				MINPT-O-EOU		
	3102.42	99.64	3035.46	3002.78	47.45	OSF1.50	10590.00	7213.62				MinPt-O-ADP		
	3246.66	112.53	3171.11	3134.14	43.88	OSF1.50	11490.00	7210.04				MinPt-O-SF		
5660.52	114.27	5583.80	5546.25	75.34	OSF1.50	15266.50	7195.00				TD			
												Pass		
Lesser 1 Blind 0' to 7846' - AB (Def Survey)	7645.94	32.81	7644.13	7613.14	N/A	MAS = 10.00 (m)	0.00	0.00				Surface		
	7645.90	32.81	7644.05	7613.10	171659.70	MAS = 10.00 (m)	4.00	4.00				MinPt-O-SF		
	7645.64	32.81	7638.78	7612.73	1545.87	MAS = 10.00 (m)	250.00	250.00				MinPts		
	7662.20	64.01	7618.93	7598.19	184.75	OSF1.50	1180.00	1163.75				MINPT-O-EOU		
	7688.04	99.24	7621.27	7588.80	118.34	OSF1.50	1790.00	1742.20				MinPt-O-ADP		
	7729.71	144.73	7632.69	7584.98	80.99	OSF1.50	2600.00	2510.30				MinPt-O-ADP		
	3309.57	470.47	2995.39	2839.10	10.58	OSF1.50	14730.00	7197.14				MinPt-CiCt		
	3309.61	470.65	2995.31	2838.96	10.58	OSF1.50	14750.00	7197.06				MINPT-O-EOU		
	3309.67	470.73	2995.32	2838.94	10.58	OSF1.50	14760.00	7197.02				MinPt-O-ADP		
	3314.27	471.93	2999.12	2842.34	10.57	OSF1.50	14910.00	7196.42				MinPt-O-SF		
	3352.21	474.07	3035.63	2878.14	10.64	OSF1.50	15266.50	7195.00				TD		
													Pass	
	Meyer 8 GYRO 0' to 7678' - AB (Def Survey)	3927.01	32.81	3925.20	3894.21	N/A	MAS = 10.00 (m)	0.00	0.00				Surface	
3926.99		32.81	3925.15	3894.18	161686.84	MAS = 10.00 (m)	4.00	4.00				MinPt-O-SF		
3925.05		32.81	3921.85	3892.24	2837.78	MAS = 10.00 (m)	300.00	300.00				MinPt-O-SF		
3925.00		32.81	3921.82	3892.3										

Offset Trajectory	Separation			Allow Dev. (ft)	Sep. Fact.	Controlling Rule	Reference Trajectory		Risk Level			Alert	Status
	Ct-Ct (ft)	MAS (ft)	EOU (ft)				MD (ft)	TVD (ft)	Alert	Minor	Major		
	5645.25	128.51	5559.04	5516.74	66.71	OSF1.50	15266.50	7195.00				TD	
Lesser PM J 21-1 Blind 0' to 7510' - PR (Def Survey)													Pass
	8057.85	32.81	8056.04	8025.04	N/A	MAS = 10.00 (m)	0.00	0.00				Surface	
	8057.82	32.81	8055.96	8025.01	204947.73	MAS = 10.00 (m)	4.00	4.00				MinPt-O-SF	
	8057.51	32.81	8050.55	8024.71	1562.91	MAS = 10.00 (m)	250.00	250.00				MinPts	
	8073.19	60.28	8032.40	8012.91	207.07	OSF1.50	1110.00	1097.14				MINPT-O-EOU	
	8104.00	99.55	8037.03	8004.45	124.34	OSF1.50	1790.00	1742.20				MinPt-O-ADP	
	8134.23	131.48	8046.04	8002.75	93.93	OSF1.50	2360.00	2282.72				MinPt-O-ADP	
	3473.20	475.06	3155.96	2998.14	11.00	OSF1.50	15120.00	7195.58				MinPt-CiCt	
	3473.29	475.33	3155.87	2997.96	10.99	OSF1.50	15150.00	7195.46				MINPT-O-EOU	
	3473.38	475.42	3155.80	2997.95	10.99	OSF1.50	15160.00	7195.42				MinPt-O-ADP	
	3476.08	476.33	3157.99	2999.75	10.98	OSF1.50	15266.50	7195.00				MinPt-O-SF	
Lesser PM J 21-2 Blind 0' to 7507' - PR (Def Survey)													Pass
	6873.80	32.81	6871.99	6840.99	N/A	MAS = 10.00 (m)	0.00	0.00				Surface	
	6873.76	32.81	6871.91	6840.95	163243.89	MAS = 10.00 (m)	4.00	4.00				MinPt-O-SF	
	6873.46	32.81	6866.24	6840.66	1270.35	MAS = 10.00 (m)	250.00	250.00				MinPts	
	6886.19	49.59	6852.53	6836.60	216.12	OSF1.50	920.00	913.91				MINPT-O-EOU	
	6902.08	68.18	6856.02	6833.90	155.96	OSF1.50	1240.00	1220.65				MinPt-O-ADP	
	3577.33	462.57	3268.42	3114.77	11.64	OSF1.50	13900.00	7200.44				MinPt-CiCt	
	3577.38	462.73	3268.38	3114.66	11.63	OSF1.50	13920.00	7200.36				MINPT-O-EOU	
	3577.45	462.80	3268.38	3114.64	11.63	OSF1.50	13930.00	7200.32				MinPt-O-ADP	
	3582.83	464.07	3272.91	3118.76	11.62	OSF1.50	14100.00	7199.64				MinPt-O-SF	
	3828.86	468.46	3516.02	3360.40	12.30	OSF1.50	15266.50	7195.00				TD	
Lesser J 21-8 Blind 0' to 7838' - PR (Def Survey)													Pass
	6943.11	32.81	6941.29	6910.30	N/A	MAS = 10.00 (m)	0.00	0.00				Surface	
	6943.06	32.81	6941.21	6910.26	156118.71	MAS = 10.00 (m)	4.00	4.00				MinPt-O-SF	
	6942.73	32.81	6935.65	6909.92	1324.23	MAS = 10.00 (m)	250.00	250.00				MinPts	
	6955.48	49.34	6921.95	6906.14	219.46	OSF1.50	920.00	913.91				MINPT-O-EOU	
	6971.37	67.93	6925.48	6903.44	158.13	OSF1.50	1240.00	1220.65				MinPt-O-ADP	
	3593.25	463.01	3284.04	3130.23	11.68	OSF1.50	13970.00	7200.16				MinPt-CiCt	
	3593.31	463.17	3283.99	3130.13	11.67	OSF1.50	13990.00	7200.08				MINPT-O-EOU	
	3593.38	463.25	3284.01	3130.13	11.67	OSF1.50	14000.00	7200.04				MinPt-O-ADP	
	3598.86	464.53	3288.64	3134.33	11.66	OSF1.50	14170.00	7199.37				MinPt-O-SF	
	3820.31	468.90	3507.17	3351.40	12.26	OSF1.50	15266.50	7195.00				TD	
Lesser J 21-17 Blind 0' to 7578' - SI (Def Survey)													Pass
	6927.24	32.81	6925.43	6894.43	N/A	MAS = 10.00 (m)	0.00	0.00				Surface	
	6927.20	32.81	6925.34	6894.39	155406.06	MAS = 10.00 (m)	4.00	4.00				MinPt-O-SF	
	6926.87	32.81	6919.81	6894.06	1321.03	MAS = 10.00 (m)	250.00	250.00				MinPts	
	6939.35	48.76	6906.24	6890.59	221.68	OSF1.50	910.00	904.18				MINPT-O-EOU	
	6953.46	65.62	6909.11	6887.84	163.42	OSF1.50	1200.00	1182.72				MinPt-O-ADP	
	3600.93	462.82	3291.85	3138.11	11.71	OSF1.50	13950.00	7200.24				MinPt-CiCt	
	3600.98	462.98	3291.79	3138.00	11.70	OSF1.50	13970.00	7200.16				MINPT-O-EOU	
	3601.04	463.06	3291.80	3137.98	11.70	OSF1.50	13980.00	7200.12				MinPt-O-ADP	
	3606.41	464.34	3296.31	3142.07	11.69	OSF1.50	14150.00	7199.45				MinPt-O-SF	
	3833.61	468.77	3520.56	3364.84	12.30	OSF1.50	15266.50	7195.00				TD	
Meyer 6 GYRO 0' to 8410' - AB (Def Survey)													Pass
	3895.68	32.81	3893.87	3862.87	N/A	MAS = 10.00 (m)	0.00	0.00				Surface	
	3895.66	32.81	3893.82	3862.85	159116.39	MAS = 10.00 (m)	4.00	4.00				MinPt-O-SF	
	3895.36	32.81	3893.01	3862.55	7283.86	MAS = 10.00 (m)	150.00	150.00				MinPts	
	3895.50	32.81	3892.85	3862.69	4704.58	MAS = 10.00 (m)	210.00	210.00				MINPT-O-EOU	
	3896.46	32.81	3893.58	3863.65	3638.78	MAS = 10.00 (m)	300.00	300.00				MinPt-O-SF	
	4151.69	32.81	4139.50	4118.88	392.34	MAS = 10.00 (m)	1900.00	1846.51				MinPt-O-SF	
	4190.07	32.81	4177.80	4157.26	392.64	MAS = 10.00 (m)	2030.00	1969.79				MinPt-O-SF	
	6201.57	53.40	6165.44	6148.17	179.55	OSF1.50	6900.00	6587.86				MinPt-O-SF	
	3739.82	154.82	3636.07	3584.99	36.60	OSF1.50	12450.00	7206.21				MinPt-CiCt	
	3740.16	155.83	3635.74	3584.34	36.36	OSF1.50	12500.00	7206.01				MINPT-O-EOU	
	3740.49	156.22	3635.81	3584.27	36.27	OSF1.50	12520.00	7205.93				MinPt-O-ADP	
	3858.82	169.70	3745.16	3689.13	34.42	OSF1.50	13400.00	7202.43				MinPt-O-SF	
	4682.33	174.93	4565.17	4507.40	40.51	OSF1.50	15266.50	7195.00				TD	
Meyer 7 GYRO 0' to 8146' - PR (Def Survey)													Pass
	3912.04	32.81	3910.23	3879.23	N/A	MAS = 10.00 (m)	0.00	0.00				Surface	
	3912.01	32.81	3910.18	3879.21	162624.03	MAS = 10.00 (m)	4.00	4.00				MinPt-O-SF	
	3909.79	32.81	3906.66	3876.98	2969.29	MAS = 10.00 (m)	290.00	290.00				MinPts	
	3909.79	32.81	3906.65	3876.98	2933.40	MAS = 10.00 (m)	300.00	300.00				MinPts	
	4169.86	32.81	4158.09	4137.05	410.10	MAS = 10.00 (m)	1900.00	1846.51				MinPt-O-SF	
	5898.85	55.22	5861.50	5843.63	164.98	OSF1.50	6360.00	6075.81				MinPts	
	5997.81	57.81	5958.74	5940.00	160.02	OSF1.50	6865.48	6555.15				MinPt-O-SF	
	4239.97	131.68	4151.65	4108.29	48.85	OSF1.50	11710.00	7209.16				MinPt-CiCt	
	4240.35	132.98	4151.29	4107.43	48.42	OSF1.50	11770.00	7208.92				MINPT-O-EOU	
	4240.86	133.54	4151.30	4107.32	48.20	OSF1.50	11800.00	7208.80				MinPt-O-ADP	
	4470.39	154.56	4366.81	4315.82	43.82	OSF1.50	13130.00	7203.51				MinPt-O-SF	
	5531.91	163.94	5422.08	5367.96	51.10	OSF1.50	15266.50	7195.00				TD	
Lesser J 21-28D GYRO 0' to 7573' - SI (Def Survey)													Pass
	6726.87	32.81	6725.06	6694.06	N/A	MAS = 10.00 (m)	0.00	0.00				Surface	
	6726.83	32.81	6724.97	6694.02	154448.75	MAS = 10.00 (m)	4.00	4.00				MinPt-O-SF	
	6726.21	32.81	6723.32	6693.41	6215.58	MAS = 10.00 (m)	260.00	260.00				MinPt-O-SF	
	6726.21	32.81	6723.31	6693.40	6224.01	MAS = 10.00 (m)	270.00	270.00				MinPts	
	6714.10	32.81	6699.58	6681.29	519.85	MAS = 10.00 (m)	2110.00	2045.65				MinPts	
	6710.38	32.81	6693.47	6677.58	438.26	MAS = 10.00 (m)	2570.00	2481.85				MinPts	
	6710.41	32.81	6693.44	6677.60	436.76	MAS = 10.00 (m)	2590.00	2500.82				MINPT-O-EOU	
	4217.59	163.89	4107.79	4053.70	38.97	OSF1.50	13150.00	7203.43				MinPt-CiCt	
	4217.96	165.16	4107.32	4052.81	38.67	OSF1.50	13210.00	7203.19				MINPT-O-EOU	
	4218.47	165.78	4107.42	4052.69	38.53	OSF1.50	13240.00	7203.07				MinPt-O-ADP	
	4370.54	182.59	4248.28	4187.95	36.21	OSF1.50	14300.00	7198.85				MinPt-O-SF	
	4717.11	189.16	4590.47	4527.95	37.71	OSF1.50	15266.50	7195.00				TD	
Lesser J 21-27D GYRO 0' to 7585' - PR (Def Survey)													Pass
	6772.23	32.81	6770.41	6739.42	N/A	MAS = 10.00 (m)	0.00	0.00				Surface	
	6772.19	32.81	6770.33	6739.38	157515.37	MAS = 10.00 (m)	4.00	4.00				MinPt-O-SF	
	6771.88	32.81	6769.92	6739.07	46144.42	MAS = 10.00 (m)	70.00	70.00				MinPts	
	6771.93	32.81	6769.05	6739.11	6474.69	MAS = 10.00 (m)	270.00	270.00				MinPts	
	8126.42	54.68	8091.43	8073.74	229.69	OSF1.50	6440.00	6151.68				MinPts	

Offset Trajectory	Separation			Allow Dev. (ft)	Sep. Fact.	Controlling Rule	Reference Trajectory		Risk Level			Alert	Status
	Ct-Ct (ft)	MAS (ft)	EOU (ft)				MD (ft)	TVD (ft)	Alert	Minor	Major		
	4226.97	195.89	4095.85	4031.08	32.62	OSF1.50	14420.00	7198.37					MinPt-CtCt
	4227.34	197.18	4095.35	4030.17	32.41	OSF1.50	14480.00	7198.13					MinPt-O-EOU
	4227.85	197.81	4095.44	4030.04	32.31	OSF1.50	14510.00	7198.01					MinPt-O-ADP
	4310.06	210.57	4169.15	4099.48	30.93	OSF1.50	15266.50	7195.00					MinPt-O-SF