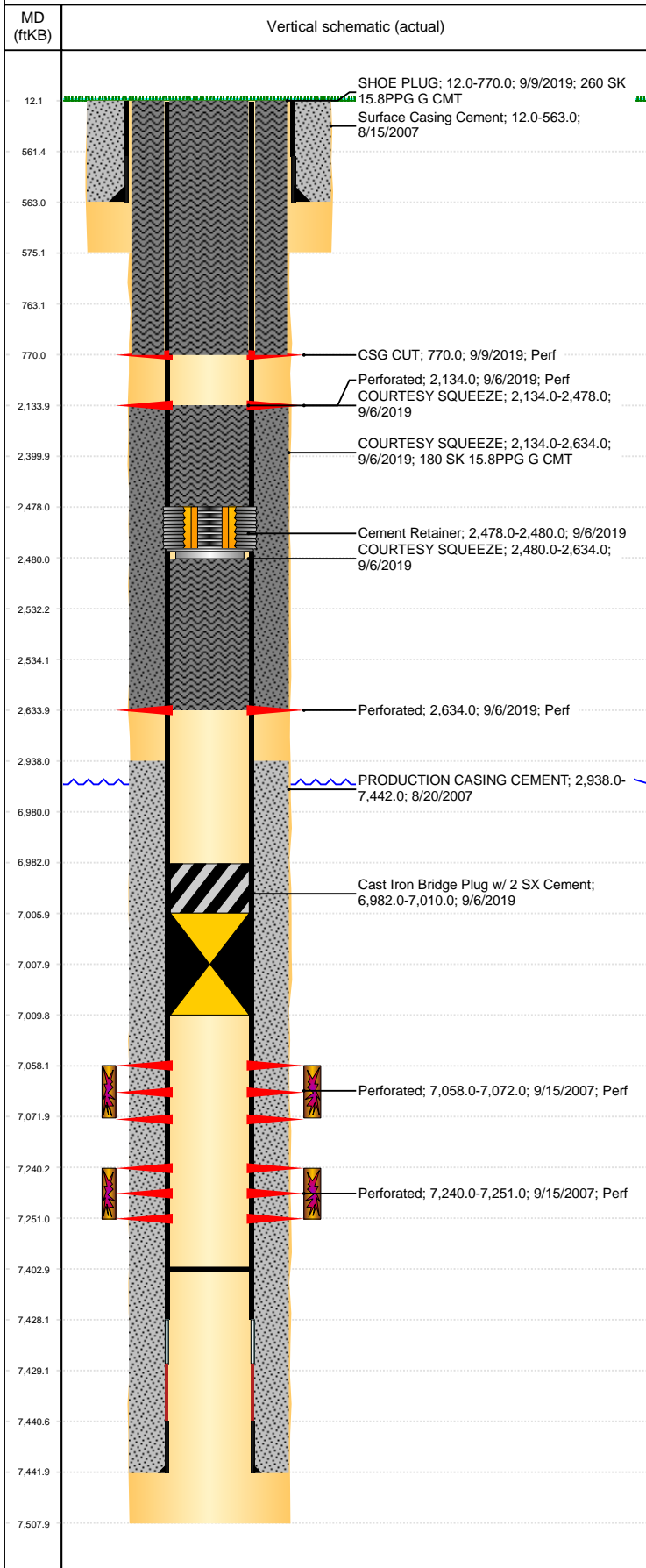


Well Name: MILLER 20-44

VERTICAL, ORIGINAL HOLE, 8/11/2020 9:23:42 AM



Well Header									
API 05-123-26151		Business Unit DJ BASIN			District 15		Well Config VERTICAL		
KB - GL / MSL (ft... 12.00		Spud Date 8/14/2007		P & A Date 4/23/2020		Well Production Status PA			SoRT Yes
Comment									
Surface Location (Congressional)									
Qtr 3 SE	Qtr 4 SE	Section 20	Twnshp 7	Twnsh... N	Range 65	Rng E/... W	Actual Latitude (°) 40.55463000		Actual Longitude (°) -104.67933000
Wellbore Sections									
Section Des			Size (in)			Act Top, MD (ftKB)		Act Btm, MD (ftKB)	
SURFACE			12 1/4			12		575	
PRODUCTION			7 7/8			575		7,508	
Casing Strings									
Csg Des			Run Date		OD (in)	Wt/Len (lb/ft)	Grade	Top, MD (ftKB)	MD (ftKB)
Surface			8/14/2007		8 5/8	24.00	J-55	12.0	563.0
Production			8/19/2007		4 1/2	11.60	M-80	12.0	7,442.0
Cement									
Des					Start Date		Top (ftKB)		Btm (ftKB)
Surface Casing Cement					8/15/2007		12.0		563.0
PRODUCTION CASING CEMENT					8/20/2007		2,938.0		7,442.0
COURTESY SQUEEZE					9/6/2019		2,134.0		2,634.0
COURTESY SQUEEZE					9/6/2019		2,134.0		2,478.0
COURTESY SQUEEZE					9/6/2019		2,480.0		2,634.0
SHOE PLUG					9/9/2019		12.0		770.0
Zone Statuses									
Zone Name		Status Date	Status	Fluid Type	Job			Prod Method	
NIOBRARA		5/3/2016	PR	Water	PLUG AND ABANDON, 9/4/2019 07:00			Flowing	
NIOBRARA		9/6/2019	P&A						
CODELL		2/2/2012	PR						
CODELL		9/6/2019	P&A		PLUG AND ABANDON, 9/4/2019 07:00				
Perforation Data									
Linked Zone			Bnch/Stg	Entered Shot Total	Top (ftKB)		Btm (ftKB)		Date
NIOBRARA, ORIGINAL HOLE CODELL, ORIGINAL HOLE				56 44	770.00		770.00		9/9/2019
					2,134.00		2,134.00		9/6/2019
					2,634.00		2,634.00		9/6/2019
					7,058.00		7,072.00		9/15/2007
					7,240.00		7,251.00		9/15/2007
Stimulation Intervals									
Zone				Start Date		Top (ftKB)		Btm (ftKB)	
NIOBRARA, ORIGINAL HOLE				9/15/2007		7,058.0		7,072.0	
CODELL, ORIGINAL HOLE				9/14/2007		7,240.0		7,251.0	
Other In Hole									
Run Date		Des			Make	OD (in)	Top (ftKB)	Btm (ftKB)	
9/6/2019		Cast Iron Bridge Plug w/ 2 SX Cement				4	6,982.0	7,010.0	
9/6/2019		Cement Retainer				4	2,478.0	2,480.0	
Logs									
Date		Type					Top, MD (ftKB)		Btm, MD (ftKB)
8/19/2007		COMPENSATED DENSITY					3,750.0		7,461.0
8/19/2007		COMPENSATED NEUTRON					3,750.0		7,461.0
8/19/2007		INDUCTION					575.0		7,461.0
9/11/2007		CEMENT BOND					2,800.0		7,400.0
10/10/2018		GYRO					12.0		7,150.0
Plug Back Total Depths									
Date		Type			Com				Depth (ftKB)
9/11/2007		FILL			FROM CBL DEPTH LOGGER				7,400.0
9/26/2007		FILL			MOST RECENT CLEAN OUT				7,403.0