

August 5, 2020

Lindsey Rider  
EHS Lead  
Caerus Oil and Gas  
143 Diamond Avenue  
Parachute, CO 81635

RE: L20 792 Well Pad Final Reclamation Status

Dear Lindsey,

Per your request, WestWater biologists have completed vegetation monitoring for the above referenced reclaimed location. We utilized the Bureau of Land Management's (BLM) Assessment, Inventory, and Monitoring (AIM) strategy for data collection and the resulting data has been entered into the Database for Inventory, Monitoring and Assessment (DIMA). In addition to monitoring the reclaimed area we selected and inventoried a reference site for this location.

Attached you will find the results summary and photos of the reclaim and reference areas. Based on the information we collected this year and our understanding of BLM and Colorado Oil & Gas Conservation Commission (COGCC) final reclamation requirements, this site meets the 80% reference criteria for Final Abandonment Notice.

If there is any additional information we can provide or clarify please contact me.

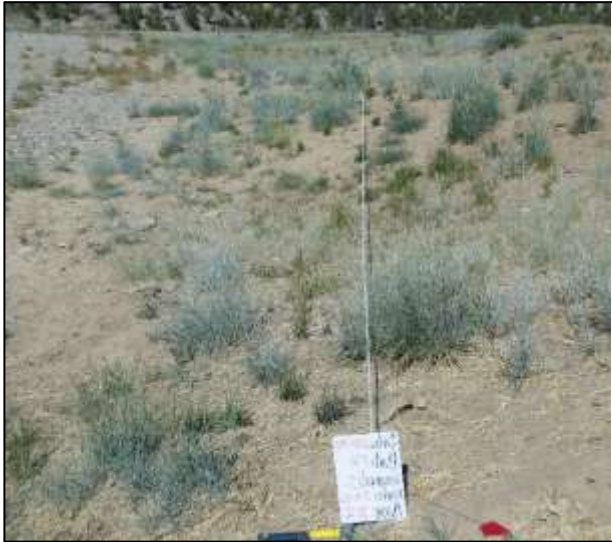
Sincerely,



Environmental Scientist/Project Manager

Percent Cover Summary Table		
	Reference Site	Reclaim Site
<b>% Foliar Cover</b>	18.0	36.0
<b>% Basal Cover</b>	0.0	2.0
<b>% Bare ground</b>	8.0	38.0
<b>% Desirable Foliar Cover</b>	<b>0.0</b>	<b>34.0</b>
<b>% Desirable of Reference Site</b>		N/A
<b>80% Desirable of Reference?</b>	<b>Site meets 80% of Reference Criteria</b>	

\*Percent Foliar Cover represents all points hit along transect of specific species including lower canopy layers; thus in some cases percent foliar cover can exceed 100%.



Reclaim Transect 1



Reclaim Transect 2

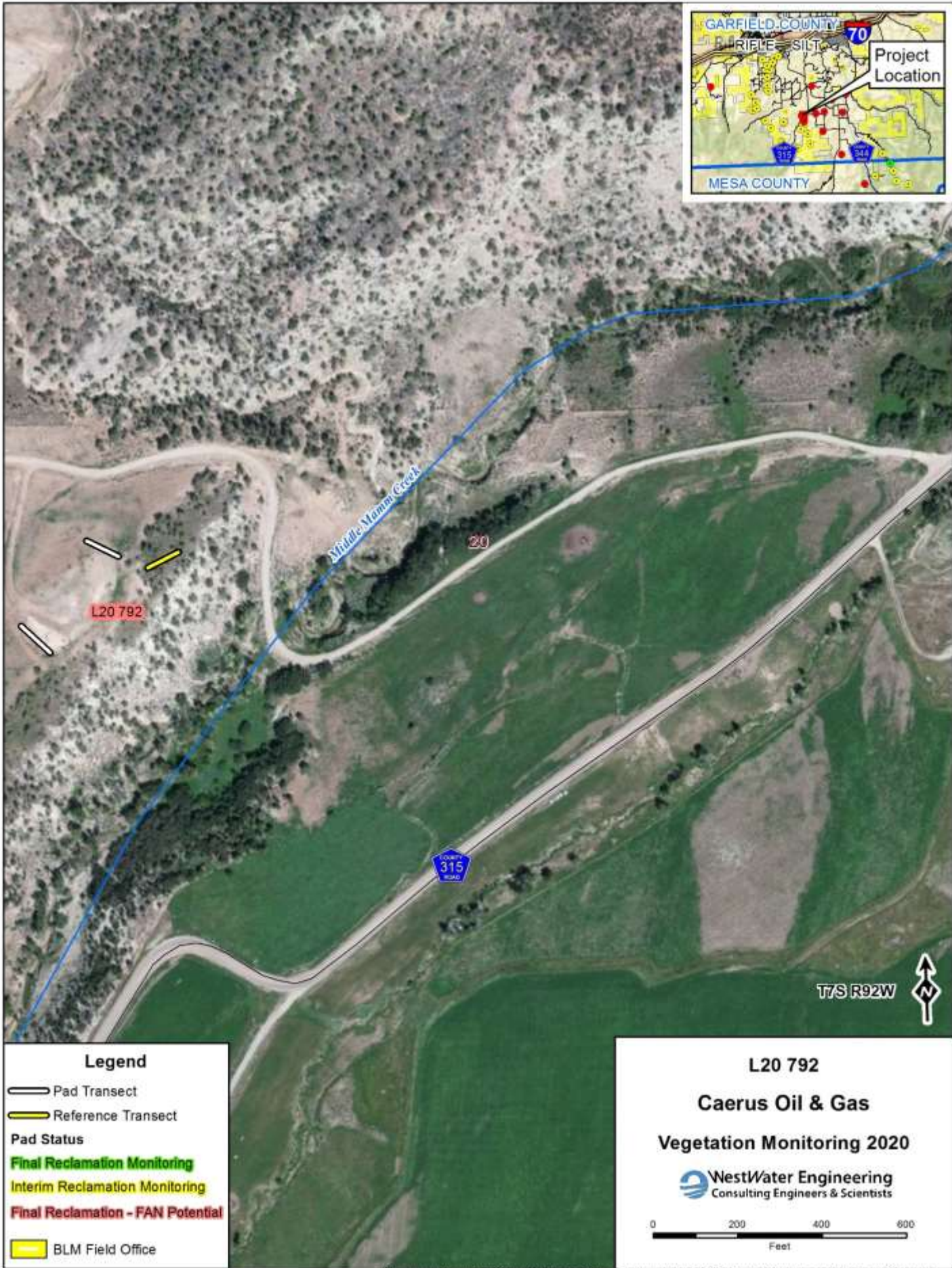


Reference Transect



Final Reclamation Site Percent Foliar Cover by Species			
Caerus Oil and Gas			
Location:	L20 792		
Date:	7/10/2020		
Plot:	Final Reclamation		
Scientific Name	Common Name	Foliar Cover	Basal Cover
Graminoids			
<b>Agropyron cristatum</b>	crested wheatgrass	<b>4.0</b>	<b>1</b>
Bromus arvensis	field brome	1.0	0
<b>Bromus inermis</b>	smooth brome	<b>11.0</b>	<b>0</b>
Bromus tectorum L.	cheatgrass	1.0	0
<b>Pascopyrum smithii</b>	western wheatgrass	<b>11.0</b>	<b>0</b>
<b>Thinopyrum intermedium</b>	intermediate wheatgrass	<b>6.0</b>	<b>1</b>
Grass cover subtotal		34.0	2
Desirable grass cover subtotal		<b>32.0</b>	<b>2</b>
Forbs/Succulents			
Lactuca serriola	prickly lettuce	1.0	0
Forb cover subtotal		1.0	0
Desirable forb cover subtotal		<b>0</b>	<b>0</b>
Shrubs			
<b>Ericameria nauseosa</b>	rubber rabbitbrush	<b>1.0</b>	<b>0</b>
Shrub cover subtotal		1.0	0
Desirable shrub cover subtotal		<b>1.0</b>	<b>0</b>
Trees			
Desirable trees cover subtotal		<b>0</b>	

**Bold = Desirable Species or Semi-desirable Species**

Final Reclamation Site Percent Foliar Cover by Species			
<b>Caerus Oil and Gas</b>			
<b>Location:</b>	L20 792		
<b>Date:</b>	7/10/2020		
<b>Plot:</b>	Reference		
Scientific Name	Common Name	Foliar Cover	Basal Cover
<b>Graminoids</b>			
<b>Bromus tectorum L.</b>	cheatgrass	18.0	0
<b>Grass cover subtotal</b>		18.0	0
<b>Desirable grass cover subtotal</b>		<b>0.0</b>	<b>0</b>
<b>Forbs/Succulents</b>			
<b>Forb cover subtotal</b>			0
<b>Desirable forb cover subtotal</b>			0
<b>Shrubs</b>			
<b>Shrub cover subtotal</b>		0.0	0
<b>Desirable shrub cover subtotal</b>			0
<b>Trees</b>			
<b>Desirable trees cover subtotal</b>			0
<b>Bold = Desirable Species or Semi-desirable Species</b>			



**Legend**

-  Pad Transect
-  Reference Transect
- Pad Status**
-  Final Reclamation Monitoring
-  Interim Reclamation Monitoring
-  Final Reclamation - FAN Potential
-  BLM Field Office

L20 792

**Caerus Oil & Gas**

**Vegetation Monitoring 2020**

 **WestWater Engineering**  
Consulting Engineers & Scientists

