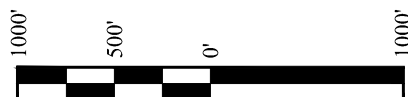
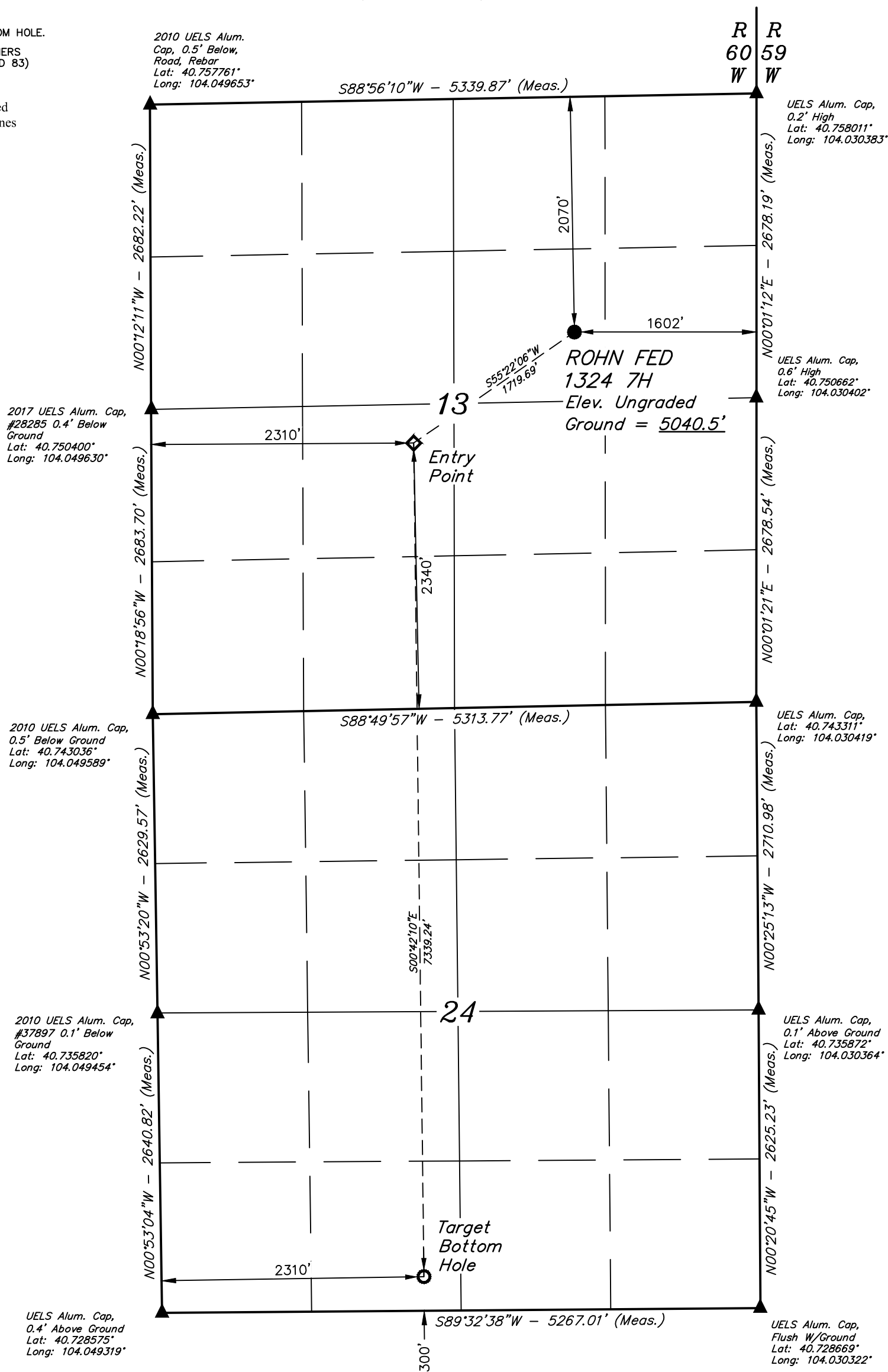


T9N, R60W, 6th P.M.

- NOTE:**
Distances referenced
on plat to section lines
are perpendicular.



PDOP = 1.2

NAD 83 (SURFACE LOCATION)	NAD 83 (ENTRY POINT)	NAD 83 (TARGET BOTTOM HOLE)
LATITUDE = 40°45'08.11" (40.752254)	LATITUDE = 40°44'58.48" (40.749578)	LATITUDE = 40°43'45.98" (40.729440)
LONGITUDE = 104°02'10.25" (104.036179)	LONGITUDE = 104°02'28.64" (104.041290)	LONGITUDE = 104°02'27.61" (104.041002)
NAD 27 (SURFACE LOCATION)	NAD 27 (ENTRY POINT)	NAD 27 (TARGET BOTTOM HOLE)
LATITUDE = 40°45'08.16" (40.752267)	LATITUDE = 40°44'58.53" (40.749591)	LATITUDE = 40°43'46.03" (40.729453)
LONGITUDE = 104°02'08.43" (104.035676)	LONGITUDE = 104°02'26.83" (104.040786)	LONGITUDE = 104°02'25.79" (104.040498)
STATE PLANE NAD 83 (CO. NORTH)	STATE PLANE NAD 83 (CO. NORTH)	STATE PLANE NAD 83 (CO. NORTH)
N: 1520238.69 E: 3405552.36	N: 1519240.44 E: 3404152.58	N: 1511905.75 E: 3404353.07
STATE PLANE NAD 27 (CO. NORTH)	STATE PLANE NAD 27 (CO. NORTH)	STATE PLANE NAD 27 (CO. NORTH)
N: 520236.67 E: 2405702.65	N: 519238.45 E: 2404302.83	N: 511903.89 E: 2404503.43

BASIS OF BEARINGS

BASIS OF BEARINGS IS A G.P.S. OBSERVATION

BASIS OF ELEVATION

SPOT ELEVATION LOCATED AT THE NORTHEAST CORNER OF SECTION 2, T9N, R61W, 6th P.M., TAKEN FROM THE GROVER SOUTH, QUADRANGLE, COLORADO, WELD COUNTY, 7.5 MINUTE QUAD (TOPOGRAPHICAL MAP) PUBLISHED BY THE UNITED STATES DEPARTMENT OF THE INTERIOR, GEOLOGICAL SURVEY. SAID ELEVATION IS MARKED AS BEING 5043 FEET.



UELS, LLC
Corporate Office * 85 South 200 East
Vernal, UT 84078 * (435) 789-1017



CERTIFICATE

THIS IS TO CERTIFY THAT THE ABOVE THAT WAS PREPARED FROM FIELD NOTES OF ACTUAL SURVEYS MADE BY ME OR UNDER MY SUPERVISION AND THAT THE SAME ARE TRUE AND CORRECT TO THE BEST OF MY KNOWLEDGE AND BELIEF.



REGISTERED LAND SURVEYOR
REGISTRATION NO. 28285
STATE OF COLORADO

REV: 4 02-14-20 C.IVIE (NAME CHANGE)

VERDAD RESOURCES LLC

ROHN FED 1324 7H
SW 1/4 NE 1/4, SECTION 13, T9N, R60W, 6th P.M.
WELD COUNTY, COLORADO

SURVEYED BY	GREG WEIMER	01-16-20	SCALE
DRAWN BY	D.J.W.	01-04-18	1" = 1000'

WELL LOCATION PLAT