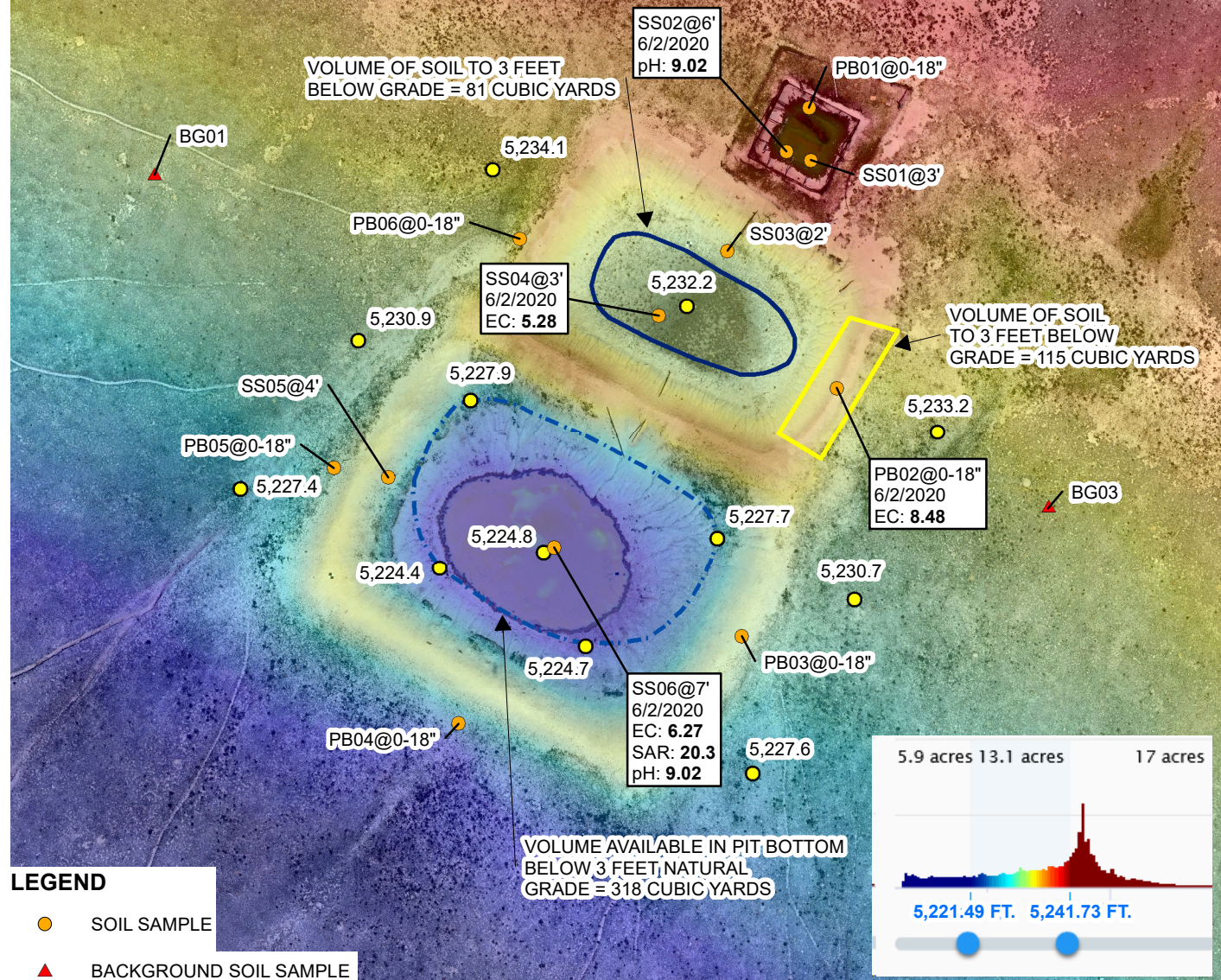


SAMPLE ID @ DEPTH BELOW SURFACE  
 SAMPLE DATE  
 B: BENZENE (mg/kg)  
 T: TOLUENE (mg/kg)  
 E: ETHYLBENZENE (mg/kg)  
 X: TOTAL XYLENES (mg/kg)  
 TPH: TOTAL PETROLEUM HYDROCARBONS (mg/kg)  
 EC: ELECTRICAL CONDUCTIVITY IN MILLIMHOS  
 PER CENTIMETER (MMHOS/CM)  
 SAR: SODIUM ADSORPTION RATIO (UNITLESS)  
 pH: pH (UNITLESS)  
 <: INDICATES RESULT IS LESS THAN THE LABORATORY  
 REPORTING LIMIT  
**BOLD:** INDICATES RESULT EXCEEDS THE  
 APPLICABLE COGCC TABLE 910-1 STANDARD



## LEGEND

- SOIL SAMPLE
- ▲ BACKGROUND SOIL SAMPLE
- GROUND SURFACE ELEVATION

□ NORTH PIT-EAST BERM: APPROXIMATE AREA WITH ABOVE STANDARD EC

□ MIDDLE PIT BOTTOM: APPROXIMATE AREA WITH ABOVE STANDARD EC

□ SOUTHERN PIT: APPROXIMATE LINE OF ELEVATION AT 3 FEET BELOW NATURAL GROUND SURFACE

NOTE: SAMPLE ID PB INDICATES SAMPLE WAS COLLECTED FROM BENEATH THE PIT BERM.

FIGURE 2  
 INORGANIC EXCEEDANCES AND  
 GROUND SURFACE ELEVATIONS  
 COLORADO ENERGY FEDERAL 14-1, 2A, AND 1A  
 NENE SEC 15-T10N-R64W  
 WELD COUNTY, COLORADO  
**HIGHPOINT RESOURCES**

