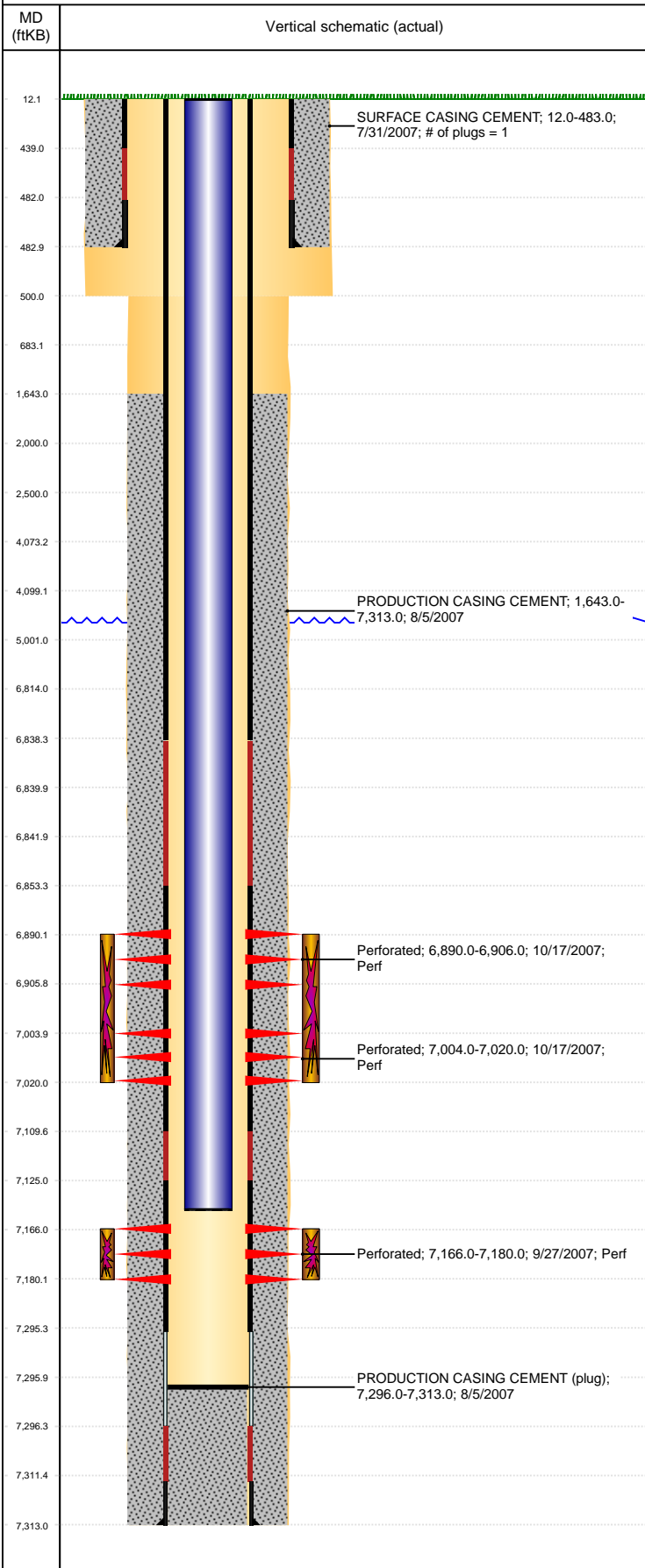


Well Name: ATREYU F35-33

DEVIATED, ORIGINAL HOLE, 8/6/2020 8:37:16 AM



Well Header

API 05-123-25936	Business Unit DJ BASIN	District 15	Well Config DEVIATED
KB - GL / MSL (ft... 12.50	Spud Date 7/30/2007	P & A Date	Well Production Status PR
SoRT No			

Comment
LEASE RC CHANGED FROM 11748603

Surface Location (Congressional)

Qtr 3 NE	Qtr 4 SE	Section 34	Twnshp 5	Twnsh... N	Range 65	Rng E... W	Actual Latitude (°) 40.35236915	Actual Longitude (°) -104.64384419
-------------	-------------	---------------	-------------	---------------	-------------	---------------	------------------------------------	---------------------------------------

Wellbore Sections

Section Des	Size (in)	Act Top, MD (ftKB)	Act Btm, MD (ftKB)
SURFACE	12 1/4	12	500
PRODUCTION	7 7/8	500	7,313

Casing Strings

Csg Des	Run Date	OD (in)	Wt/Len (lb/ft)	Grade	Top, MD (ftKB)	MD (ftKB)
Surface	7/30/2007	8 5/8	24.00	J-55	12.0	483.0
Production	8/5/2007	4 1/2	11.60	M-80	12.0	7,313.0

Cement

Des	Start Date	Top (ftKB)	Btm (ftKB)
SURFACE CASING CEMENT	7/31/2007	12.0	483.0
PRODUCTION CASING CEMENT	8/5/2007	1,643.0	7,313.0

Zone Statuses

Zone Name	Status Date	Status	Fluid Type	Job	Prod Method
CODELL	11/5/2007	PR		DRILLING/COMPLETION - ORIGINAL, 7/30/2007...	
CODELL	1/4/2012	PR		RE-FRAC, 11/4/2011 08:00	
NIOBRARA	11/5/2007	PR		DRILLING/COMPLETION - ORIGINAL, 7/30/2007...	

Perforation Data

Linked Zone	Bnch/Stg	Entered Shot Total	Top (ftKB)	Btm (ftKB)	Date
NIOBRARA, ORIGINAL HOLE		64	6,890.00	6,906.00	10/17/2007
NIOBRARA, ORIGINAL HOLE		64	7,004.00	7,020.00	10/17/2007
CODELL, ORIGINAL HOLE		56	7,166.00	7,180.00	9/27/2007

Stimulation Intervals

Zone	Start Date	Top (ftKB)	Btm (ftKB)
NIOBRARA, ORIGINAL HOLE	10/17/2007	6,890.0	7,020.0
CODELL, ORIGINAL HOLE	11/17/2011	7,166.0	7,180.0
CODELL, ORIGINAL HOLE	10/17/2007	7,166.0	7,180.0

Other In Hole

Run Date	Des	Make	OD (in)	Top (ftKB)	Btm (ftKB)

Logs

Date	Type	Top, MD (ftKB)	Btm, MD (ftKB)
8/4/2007	COMPENSATED DENSITY	483.0	4,535.0
8/4/2007	INDUCTION	483.0	4,555.0
9/11/2007	CBL/CCL/GR	12.5	7,290.0
9/12/2007	PULSED NEUTRON	483.0	7,290.0

Plug Back Total Depths

Date	Type	Com	Depth (ftKB)
9/11/2007	CEMENT PLUG	DEPTH LOGGER	7,295.0
2/26/2008	PLUG REMNANTS	C/O TO 236 JTS W/BURN SHOE	7,296.0