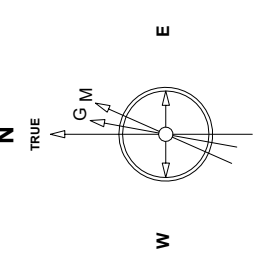


# Great Western Operating Company, LLC

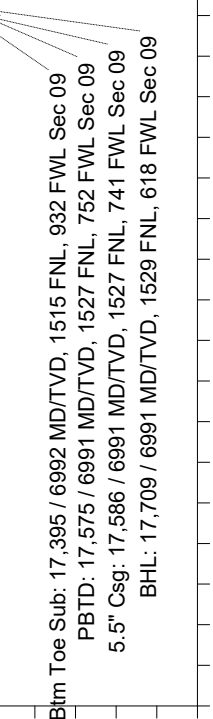
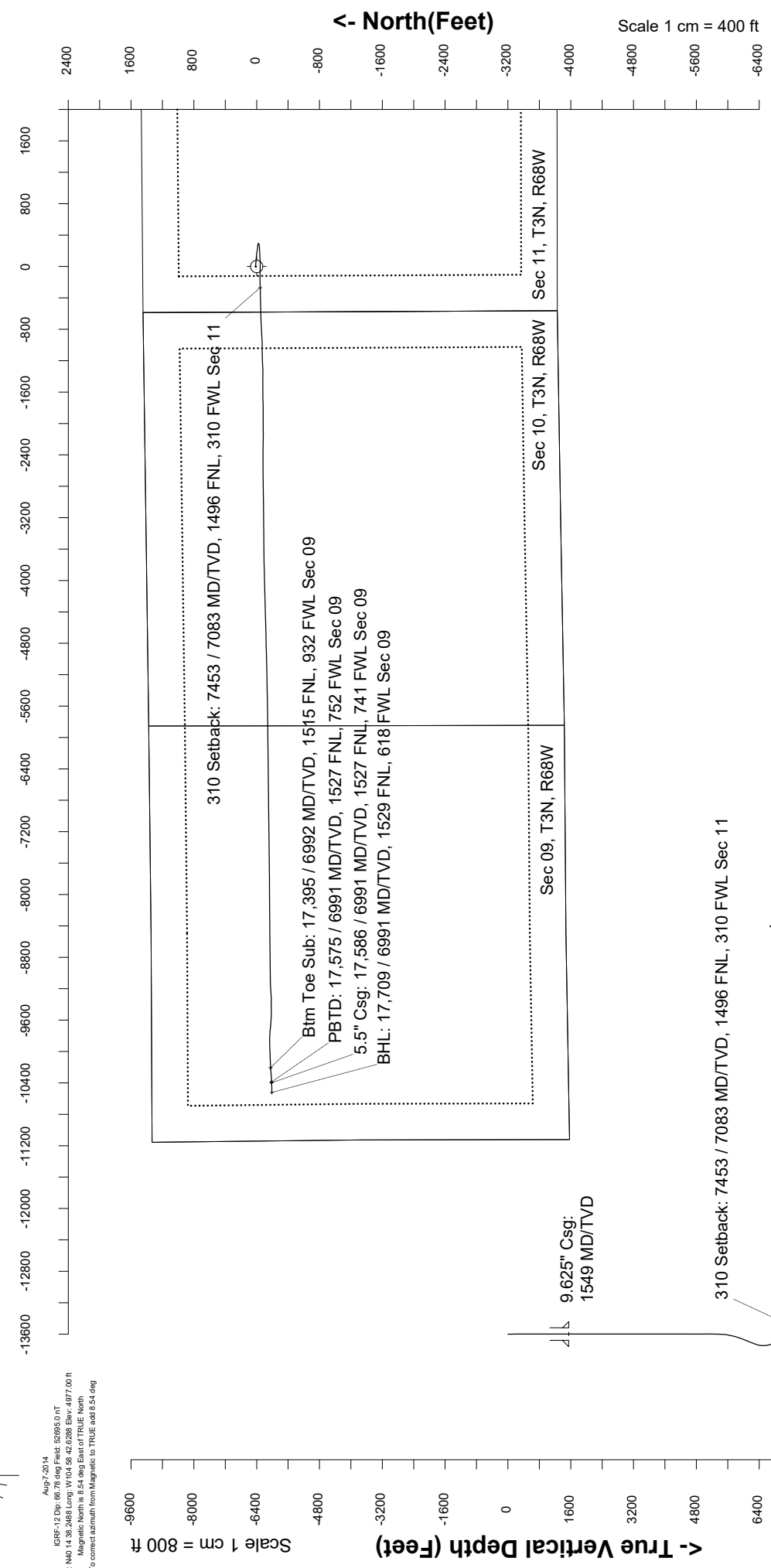
Location	Colorado	Slot	N16 - Postle IC 09-102HNX
Field	Wattenburg	Well	Postle IC 09-102HNX
Installation	Postle West	Wellbore	Postle IC 09-102HNX (AWB)

Created by: rmmount  
 Date plotted: 30-Apr-2020  
 Plot reference is Postle IC 09-102HNX (AWB).  
 Ref wellpath is Postle IC 09-102HNX (AW/PH1).  
 Coordinates are in Feet reference N16 - Postle IC 09-102HNX.  
 True Vertical Depths are reference Rig Datum.  
 Measured Depths are reference Rig Datum.  
 Rig Datum: Actual Datum #1  
 Rig Datum to Mean Sea Level: 4997.00 ft.  
 Plot North is aligned to TRUE North.



Aug 7, 2014  
 IGRF-12.Dat (62.78 deg Field, 52695.0 OT  
 Lat: N0 14.38 2488 Long: W 104.58 42.6288 Elev: 4977.00 ft  
 Magnetic North is 8.54 deg East of TRUE North  
 To correct azimuth from Magnetic to TRUE add 8.54 deg

Scale 1 cm = 400 ft



Vertical Section (Feet) ->  
 Azimuth 268.95 with reference 0.00 N, 0.00 E from N16 - Postle IC 09-102HNX

Great Western Operating Co, LLC  
 Directional Survey Report  
 Wellpath: Postle IC 09-102HNX  
 MDs and TVDs are from Rig Floor 4997.0ft above Mean Sea Level

MD[ft]	Inc[deg]	Azi[deg]	TVD[ft]	North[ft]	East[ft]	DLS [deg/100ft]	Vertical Section[ft]
0.00	0.00	0.00	0.00	0.00	0.00		0.00
14.00	0.00	267.66	14.00	0.00	0.00	0.00	0.00
92.00	0.18	267.66	92.00	-0.01	-0.12	0.00	0.12
180.00	0.13	329.71	180.00	0.08	-0.31	0.00	0.31
272.00	0.22	357.66	272.00	0.34	-0.37	0.00	0.36
364.00	0.18	340.70	364.00	0.66	-0.43	0.00	0.41
454.00	1.27	10.93	453.99	1.77	-0.28	0.00	0.25
544.00	1.63	357.22	543.96	4.03	-0.16	0.00	0.08
634.00	1.01	353.00	633.94	6.09	-0.32	0.00	0.20
724.00	1.27	2.14	723.92	7.88	-0.37	0.00	0.23
813.00	1.27	0.03	812.90	9.85	-0.34	0.00	0.16
903.00	1.49	352.56	902.87	12.00	-0.49	0.00	0.27
993.00	1.36	341.40	992.84	14.18	-0.98	0.00	0.72
1083.00	0.79	334.10	1082.83	15.75	-1.59	0.00	1.30
1173.00	0.35	278.03	1172.82	16.34	-2.14	0.00	1.83
1263.00	0.40	134.42	1262.82	16.16	-2.18	0.00	1.89
1353.00	0.53	144.44	1352.82	15.60	-1.72	0.00	1.43
1443.00	0.44	132.13	1442.82	15.03	-1.22	0.00	0.94
1498.00	0.31	115.61	1497.82	14.83	-0.93	0.00	0.65
1623.00	0.19	187.03	1622.81	14.48	-0.65	0.00	0.38
1712.00	0.04	0.00	1711.81	14.36	-0.67	0.00	0.40
1802.00	0.04	332.14	1801.81	14.42	-0.68	0.00	0.42
1891.00	0.14	346.95	1890.81	14.55	-0.72	0.00	0.45
1981.00	0.19	250.97	1980.81	14.61	-0.89	0.00	0.62
2070.00	0.15	252.97	2069.81	14.53	-1.14	0.00	0.87
2160.00	0.09	128.60	2159.81	14.45	-1.19	0.00	0.93
2249.00	0.17	300.30	2248.81	14.47	-1.25	0.00	0.99
2338.00	0.29	251.30	2337.81	14.47	-1.58	0.00	1.31
2428.00	0.14	62.37	2427.81	14.45	-1.70	0.00	1.43
2517.00	0.64	188.24	2516.81	14.00	-1.67	0.00	1.42
2607.00	0.07	341.97	2606.81	13.56	-1.76	0.00	1.51
2696.00	0.19	258.16	2695.81	13.58	-1.92	0.00	1.67
2786.00	0.22	293.78	2785.81	13.62	-2.23	0.00	1.98
2876.00	0.16	203.24	2875.81	13.57	-2.44	0.00	2.19
2965.00	0.09	320.46	2964.81	13.51	-2.53	0.00	2.28
3055.00	0.20	310.16	3054.81	13.67	-2.69	0.00	2.44
3144.00	0.20	287.06	3143.81	13.82	-2.96	0.00	2.71
3234.00	0.22	303.92	3233.81	13.96	-3.26	0.00	3.00
3323.00	0.58	291.59	3322.80	14.22	-3.82	0.00	3.55
3413.00	0.07	106.80	3412.80	14.37	-4.19	0.00	3.92
3502.00	2.30	81.44	3501.78	14.62	-2.37	0.00	2.10
3592.00	0.30	151.85	3591.75	14.68	-0.47	0.00	0.20
3681.00	0.16	319.50	3680.75	14.57	-0.44	0.00	0.17
3771.00	0.07	343.46	3770.75	14.72	-0.54	0.00	0.27
3860.00	0.14	338.50	3859.75	14.87	-0.59	0.00	0.32
3950.00	0.16	298.36	3949.75	15.03	-0.75	0.00	0.47
4039.00	0.39	234.77	4038.75	14.92	-1.10	0.00	0.83
4129.00	0.03	17.70	4128.75	14.76	-1.35	0.00	1.07
4218.00	0.07	78.79	4217.75	14.80	-1.29	0.00	1.01
4308.00	0.04	315.26	4307.75	14.83	-1.25	0.00	0.98
4398.00	0.07	344.68	4397.75	14.91	-1.29	0.00	1.02
4487.00	0.10	290.53	4486.75	14.99	-1.38	0.00	1.10
4577.00	0.07	313.19	4576.75	15.05	-1.49	0.00	1.21
4666.00	0.09	269.25	4665.75	15.09	-1.60	0.00	1.32
4756.00	0.00	98.07	4755.75	15.09	-1.67	0.00	1.39
4846.00	0.11	302.94	4845.75	15.13	-1.74	0.00	1.46
4935.00	0.12	4.17	4934.75	15.27	-1.81	0.00	1.53
5025.00	0.00	98.07	5024.75	15.37	-1.80	0.00	1.52
5114.00	0.07	317.99	5113.75	15.41	-1.84	0.00	1.55
5204.00	0.04	56.43	5203.75	15.47	-1.85	0.00	1.56
5293.00	0.19	30.21	5292.75	15.61	-1.75	0.00	1.46
5383.00	2.87	96.49	5382.71	15.48	0.57	0.00	-0.85
5472.00	4.24	98.50	5471.54	14.75	6.03	0.00	-6.30
5562.00	7.63	92.18	5561.04	14.03	15.30	0.00	-15.55
5652.00	13.69	95.05	5649.45	12.86	31.89	0.00	-32.12

MD[ft]	Inc[deg]	Azi[deg]	TVD[ft]	North[ft]	East[ft]	DLS [deg/100ft]	Vertical Section[ft]
5741.00	13.98	96.09	5735.87	10.79	53.07	0.00	-53.26
5831.00	15.02	96.50	5823.00	8.32	75.47	0.00	-75.61
5921.00	17.86	95.09	5909.31	5.77	100.81	0.00	-100.90
6010.00	19.93	96.25	5993.51	2.91	129.49	0.00	-129.52
6100.00	23.99	96.92	6076.96	-0.96	162.91	0.00	-162.87
6190.00	24.20	96.68	6159.12	-5.31	199.39	0.00	-199.26
6279.00	23.94	97.11	6240.38	-9.67	235.43	0.00	-235.21
6369.00	17.74	95.41	6324.45	-13.23	267.23	0.00	-266.94
6458.00	9.67	104.88	6410.86	-16.43	287.99	0.00	-287.64
6548.00	4.15	170.42	6500.28	-21.59	295.85	0.00	-295.41
6637.00	8.89	244.38	6588.80	-27.75	290.18	0.00	-289.62
6727.00	16.77	265.17	6676.52	-31.86	270.93	0.00	-270.30
6816.00	24.63	263.19	6759.71	-35.15	239.67	0.00	-238.99
6906.00	34.02	269.80	6838.11	-37.47	195.76	0.00	-195.04
6995.00	43.36	266.07	6907.51	-39.65	140.26	0.00	-139.50
7085.00	53.34	267.12	6967.25	-43.59	73.21	0.00	-72.40
7174.00	63.68	270.58	7013.69	-44.99	-2.55	0.00	3.38
7264.00	71.39	271.94	7048.05	-43.13	-85.63	0.00	86.41
7353.00	79.22	269.10	7070.62	-42.39	-171.64	0.00	172.39
7442.00	85.81	267.54	7082.20	-44.98	-259.80	0.00	260.58
7487.00	90.06	268.62	7083.83	-46.49	-304.73	0.00	305.53
7532.00	89.63	270.45	7083.95	-46.86	-349.73	0.00	350.53
7621.00	89.66	268.03	7084.50	-48.04	-438.71	0.00	439.52
7711.00	89.38	268.45	7085.25	-50.80	-528.66	0.00	529.51
7801.00	89.41	268.60	7086.20	-53.12	-618.63	0.00	619.50
7890.00	89.72	268.26	7086.88	-55.55	-707.59	0.00	708.49
7979.00	89.63	266.02	7087.38	-60.00	-796.48	0.00	797.44
8069.00	90.40	266.68	7087.36	-65.72	-886.29	0.00	887.35
8158.00	89.75	268.34	7087.24	-69.59	-975.20	0.00	976.32
8248.00	89.48	270.27	7087.85	-70.68	-1065.19	0.00	1066.31
8338.00	88.83	268.54	7089.18	-71.62	-1155.17	0.00	1156.29
8427.00	89.14	266.37	7090.75	-75.57	-1244.07	0.00	1245.24
8516.00	88.98	269.11	7092.21	-79.08	-1332.98	0.00	1334.20
8606.00	89.20	271.30	7093.64	-78.76	-1422.96	0.00	1424.17
8696.00	88.92	269.46	7095.12	-78.16	-1512.94	0.00	1514.12
8785.00	89.45	269.86	7096.39	-78.69	-1601.93	0.00	1603.10
8875.00	88.92	268.34	7097.67	-80.10	-1691.91	0.00	1693.09
8964.00	89.23	268.71	7099.10	-82.39	-1780.86	0.00	1782.08
9054.00	89.20	270.74	7100.34	-82.82	-1870.85	0.00	1872.06
9143.00	88.89	269.39	7101.82	-82.72	-1959.84	0.00	1961.02
9233.00	89.17	269.73	7103.34	-83.41	-2049.82	0.00	2051.01
9322.00	89.78	269.78	7104.16	-83.79	-2138.81	0.00	2139.99
9411.00	90.28	270.64	7104.11	-83.47	-2227.81	0.00	2228.97
9501.00	89.78	269.87	7104.06	-83.07	-2317.81	0.00	2318.95
9591.00	89.78	271.69	7104.41	-81.84	-2407.80	0.00	2408.90
9680.00	89.94	270.30	7104.63	-80.30	-2496.78	0.00	2497.84
9770.00	89.14	269.01	7105.35	-80.84	-2586.78	0.00	2587.82
9860.00	90.34	270.27	7105.76	-81.40	-2676.77	0.00	2677.81
9949.00	89.94	268.06	7105.54	-82.70	-2765.75	0.00	2766.81
10039.00	90.40	269.54	7105.27	-84.58	-2855.73	0.00	2856.80
10128.00	90.65	269.64	7104.46	-85.22	-2944.72	0.00	2945.79
10218.00	90.43	269.39	7103.61	-85.98	-3034.72	0.00	3035.79
10307.00	90.52	268.18	7102.87	-87.87	-3123.69	0.00	3124.78
10397.00	90.25	271.01	7102.27	-88.51	-3213.68	0.00	3214.76
10486.00	89.78	269.00	7102.24	-88.50	-3302.67	0.00	3303.74
10576.00	89.91	269.28	7102.49	-89.85	-3392.66	0.00	3393.74
10665.00	89.88	268.95	7102.65	-91.22	-3481.65	0.00	3482.74
10755.00	89.82	269.25	7102.89	-92.64	-3571.64	0.00	3572.74
10845.00	90.25	269.77	7102.83	-93.41	-3661.64	0.00	3662.74
10934.00	90.43	269.82	7102.30	-93.73	-3750.64	0.00	3751.72
11024.00	89.91	268.98	7102.04	-94.67	-3840.63	0.00	3841.72
11114.00	90.46	268.24	7101.75	-96.85	-3930.60	0.00	3931.72
11203.00	90.43	268.33	7101.05	-99.51	-4019.56	0.00	4020.71
11293.00	90.22	268.21	7100.54	-102.23	-4109.52	0.00	4110.70
11383.00	90.37	268.28	7100.08	-104.99	-4199.47	0.00	4200.69
11472.00	90.37	268.28	7099.51	-107.66	-4288.43	0.00	4289.68
11562.00	90.34	268.52	7098.95	-110.17	-4378.39	0.00	4379.68
11652.00	90.46	268.64	7098.32	-112.40	-4468.36	0.00	4469.67
11741.00	90.52	268.62	7097.56	-114.53	-4557.34	0.00	4558.67
11831.00	90.46	268.67	7096.79	-116.66	-4647.31	0.00	4648.67
11921.00	90.43	268.58	7096.09	-118.82	-4737.28	0.00	4738.66
12010.00	90.46	268.57	7095.40	-121.03	-4826.25	0.00	4827.66

MD[ft]	Inc[deg]	Azi[deg]	TVD[ft]	North[ft]	East[ft]	DLS [deg/100ft]	Vertical Section[ft]
12100.00	90.43	268.59	7094.70	-123.26	-4916.22	0.00	4917.65
12189.00	90.46	268.54	7094.01	-125.49	-5005.19	0.00	5006.65
12279.00	91.14	268.61	7092.75	-127.73	-5095.15	0.00	5096.64
12368.00	91.11	268.80	7091.00	-129.74	-5184.11	0.00	5185.62
12457.00	91.26	268.63	7089.16	-131.73	-5273.07	0.00	5274.60
12547.00	91.45	269.00	7087.04	-133.60	-5363.02	0.00	5364.57
12636.00	91.29	268.73	7084.91	-135.36	-5451.98	0.00	5453.55
12726.00	91.35	269.08	7082.83	-137.08	-5541.94	0.00	5543.52
12816.00	91.35	269.18	7080.71	-138.44	-5631.90	0.00	5633.50
12905.00	91.66	271.42	7078.38	-137.98	-5720.87	0.00	5722.44
12995.00	90.83	267.57	7076.42	-138.77	-5810.82	0.00	5812.39
13084.00	91.38	269.82	7074.70	-140.80	-5899.78	0.00	5901.37
13174.00	91.48	269.07	7072.46	-141.67	-5989.75	0.00	5991.34
13263.00	91.02	268.18	7070.52	-143.80	-6078.70	0.00	6080.31
13352.00	91.60	269.43	7068.48	-145.66	-6167.65	0.00	6169.29
13442.00	92.06	269.14	7065.61	-146.78	-6257.60	0.00	6259.24
13532.00	92.40	269.76	7062.11	-147.65	-6347.53	0.00	6349.17
13621.00	92.37	269.78	7058.40	-148.00	-6436.45	0.00	6438.08
13711.00	92.40	269.56	7054.66	-148.52	-6526.37	0.00	6528.00
13800.00	91.57	269.60	7051.57	-149.17	-6615.31	0.00	6616.94
13890.00	91.42	269.44	7049.23	-149.93	-6705.28	0.00	6706.90
13979.00	90.83	269.25	7047.48	-150.94	-6794.26	0.00	6795.88
14069.00	91.29	269.77	7045.81	-151.71	-6884.24	0.00	6885.86
14158.00	90.25	269.51	7044.62	-152.27	-6973.23	0.00	6974.85
14248.00	90.09	269.41	7044.35	-153.12	-7063.22	0.00	7064.84
14337.00	90.09	269.25	7044.21	-154.16	-7152.22	0.00	7153.84
14427.00	90.98	267.94	7043.37	-156.37	-7242.18	0.00	7243.83
14517.00	91.20	269.26	7041.66	-158.57	-7332.14	0.00	7333.81
14606.00	91.29	269.44	7039.72	-159.58	-7421.11	0.00	7422.79
14696.00	91.05	268.88	7037.89	-160.89	-7511.08	0.00	7512.77
14786.00	91.08	270.06	7036.21	-161.73	-7601.06	0.00	7602.75
14875.00	91.08	269.59	7034.54	-162.00	-7690.04	0.00	7691.72
14965.00	91.17	269.65	7032.77	-162.60	-7780.02	0.00	7781.70
15055.00	91.17	269.73	7030.93	-163.08	-7870.00	0.00	7871.67
15144.00	91.14	269.73	7029.14	-163.50	-7958.98	0.00	7960.65
15234.00	91.23	269.54	7027.28	-164.08	-8048.96	0.00	8050.62
15324.00	91.05	269.35	7025.49	-164.95	-8138.94	0.00	8140.60
15413.00	91.14	269.73	7023.78	-165.66	-8227.92	0.00	8229.58
15503.00	91.14	269.57	7021.99	-166.21	-8317.90	0.00	8319.55
15593.00	91.11	269.58	7020.23	-166.88	-8407.88	0.00	8409.53
15682.00	91.26	269.39	7018.39	-167.68	-8496.86	0.00	8498.51
15772.00	90.77	269.46	7016.79	-168.58	-8586.84	0.00	8588.49
15862.00	90.77	269.38	7015.58	-169.49	-8676.83	0.00	8678.48
15951.00	90.77	269.59	7014.39	-170.29	-8765.82	0.00	8767.47
16041.00	90.99	269.46	7013.00	-171.04	-8855.80	0.00	8857.45
16131.00	90.89	269.53	7011.53	-171.83	-8945.79	0.00	8947.43
16221.00	91.29	269.20	7009.82	-172.83	-9035.76	0.00	9037.42
16310.00	91.88	268.65	7007.35	-174.50	-9124.71	0.00	9126.38
16399.00	90.52	264.96	7005.49	-179.46	-9213.54	0.00	9215.28
16489.00	90.80	267.83	7004.45	-185.11	-9303.35	0.00	9305.18
16578.00	90.40	271.45	7003.52	-185.67	-9392.32	0.00	9394.15
16668.00	90.31	267.73	7002.96	-186.32	-9482.30	0.00	9484.13
16757.00	90.40	273.20	7002.41	-185.60	-9571.27	0.00	9573.06
16846.00	91.54	276.21	7000.90	-178.30	-9659.94	0.00	9661.59
16936.00	91.14	275.67	6998.80	-168.99	-9749.43	0.00	9750.89
17026.00	91.11	269.80	6997.03	-164.69	-9839.27	0.00	9840.64
17115.00	91.05	267.90	6995.35	-166.48	-9928.24	0.00	9929.62
17205.00	91.08	268.70	6993.68	-169.15	-10018.18	0.00	10019.60
17294.00	90.46	267.54	6992.48	-172.07	-10107.12	0.00	10108.58
17384.00	90.34	265.95	6991.86	-177.18	-10196.97	0.00	10198.51
17473.00	90.28	265.17	6991.37	-184.07	-10285.70	0.00	10287.35
17562.00	90.25	267.63	6990.96	-189.66	-10374.52	0.00	10376.25
17652.00	90.12	268.93	6990.67	-192.36	-10464.48	0.00	10466.24
17709.00	90.12	268.93	6990.55	-193.42	-10521.47	0.00	10523.24