



Lat40°, Inc. 6250 W. 10th Street, Unit 2, Greeley, CO 970-515-5294

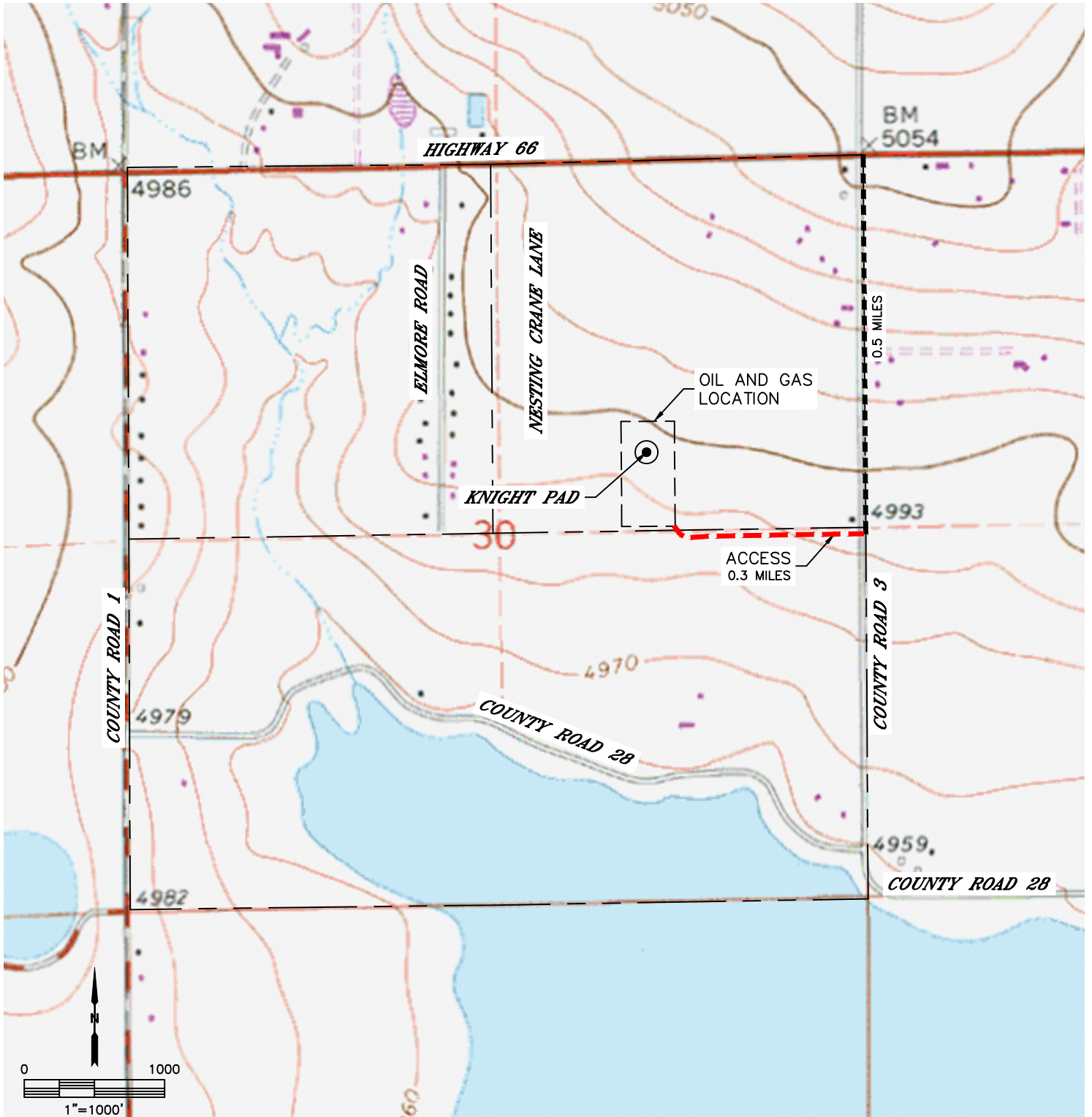
# ACCESS ROAD MAP

**KNIGHT PAD**

SECTION: 30  
TOWNSHIP: 3N  
RANGE: 68W  
6TH. P.M.  
WELD COUNTY, CO

### DRIVING DIRECTIONS TO KNIGHT PAD

FROM THE INTERSECTION OF COUNTY ROAD 3 AND HIGHWAY 66, GO SOUTH ON COUNTY ROAD 3 FOR 0.5 MILES TO A PROPOSED ACCESS TO THE WEST. GO WEST ON PROPOSED ACCESS FOR 0.3 MILES TO THE PROPOSED DRILL PAD AND PRODUCTION FACILITY.





Lat40°, Inc. 6250 W. 10th Street, Unit 2, Greeley, CO 970-515-5294

# ACCESS ROAD MAP

**KNIGHT PAD**

SECTION: 30  
TOWNSHIP: 3N  
RANGE: 68W  
6TH. P.M.  
WELD COUNTY, CO

