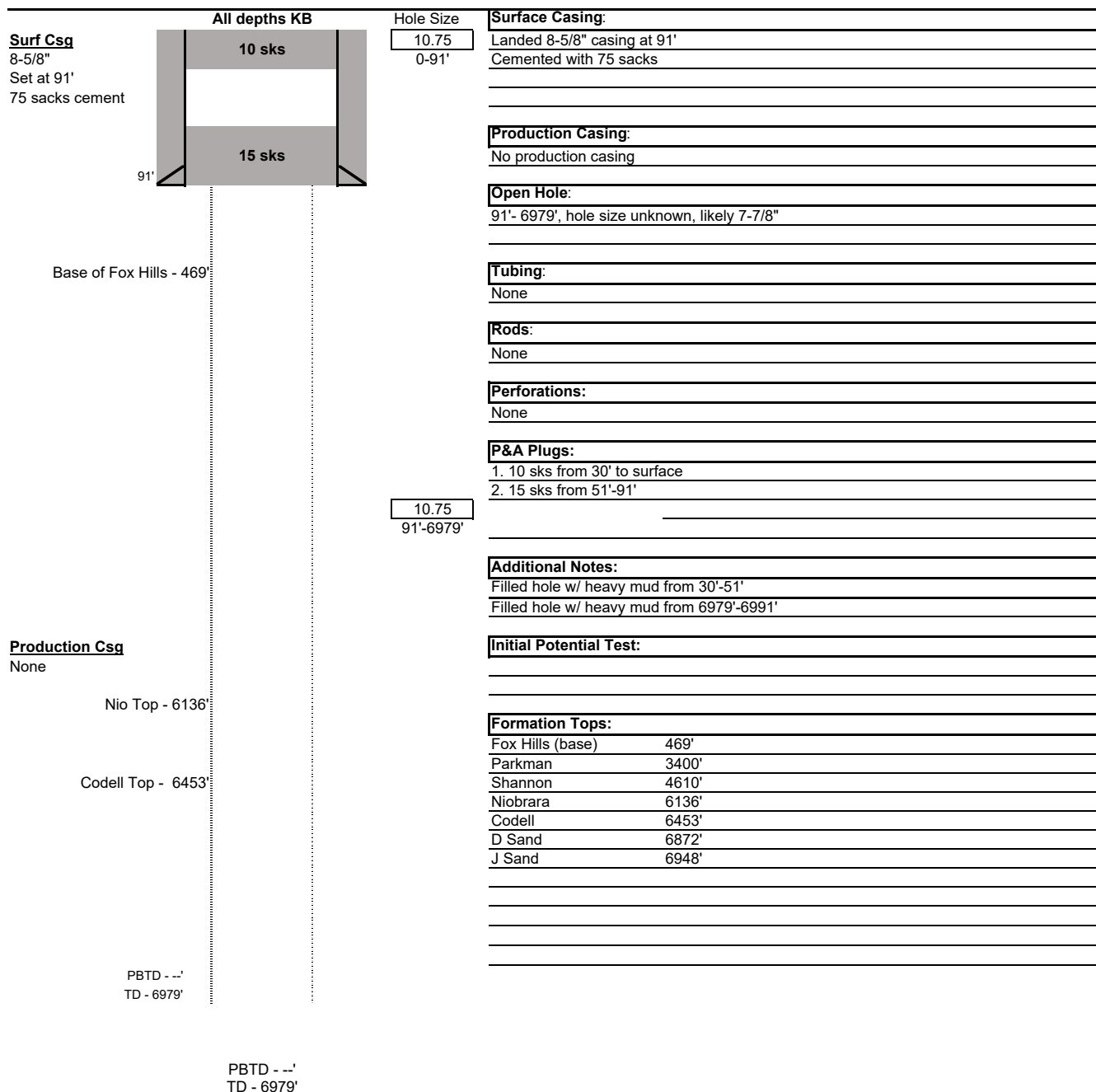




Date Prepared:	3/21/2019
Last Updated:	5/14/2019
Spud Date:	5/13/1969
Completion Start Date:	N/A
Last Workover Date:	N/A
Prepared by:	Ariana Solis

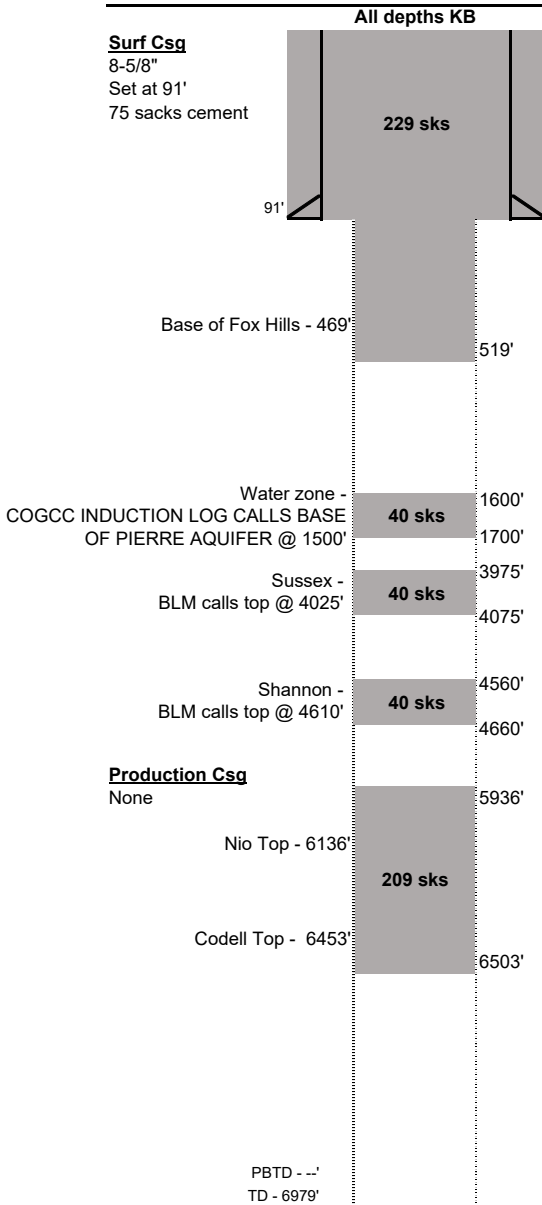




### Proposed Wellbore Schematic

Well Name: Doty Federal 1  
 Location: 654' FSL, 662' FWL, SWSW Sec 22, T8N, R60W (As Surveyed)  
 County: Weld  
 API #: 05-123-07078  
 Co-ordinates: 40.642359/-104.084793  
 Elevations: GROUND: 4920'  
 KB: \_\_\_\_\_  
 Depths (KB): PBTD: --  
 TD: 6979'

Date Prepared: 3/21/2019  
 Last Updated: 5/14/2019  
 Spud Date: 5/13/1969  
 Completion Start Date: N/A  
 Last Workover Date: N/A  
 Prepared by: Ariana Solis



Hole Size  
 10.75  
 0-91'

**Surface Casing:**  
 Landed 8-5/8" casing at 91'  
 Cemented with 75 sacks

**Production Casing:**  
 No production casing

**Open Hole:**  
 91'- 6979', hole size unknown, likely 7-7/8"

**Tubing:**  
 None

**Rods:**  
 None

**Perforations:**  
 None

**P&A Plugs:**  
 1. 209 sks from 6503'-5936'  
 2. 40 sks from 4660'-4560'  
 3. 40 sks from 4075'-3975'  
 4. 40 sks from 1700'-1600'  
 5. 229 sks from 519' to surface

**Additional Notes:**

**Initial Potential Test:**

**Formation Tops:**  
 Fox Hills (base) 469'  
 Parkman 3400'  
 Shannon 4610'  
 Niobrara 6136'  
 Codell 6453'  
 D Sand 6872'  
 J Sand 6948'

PBTD - --'  
 TD - 6979'