

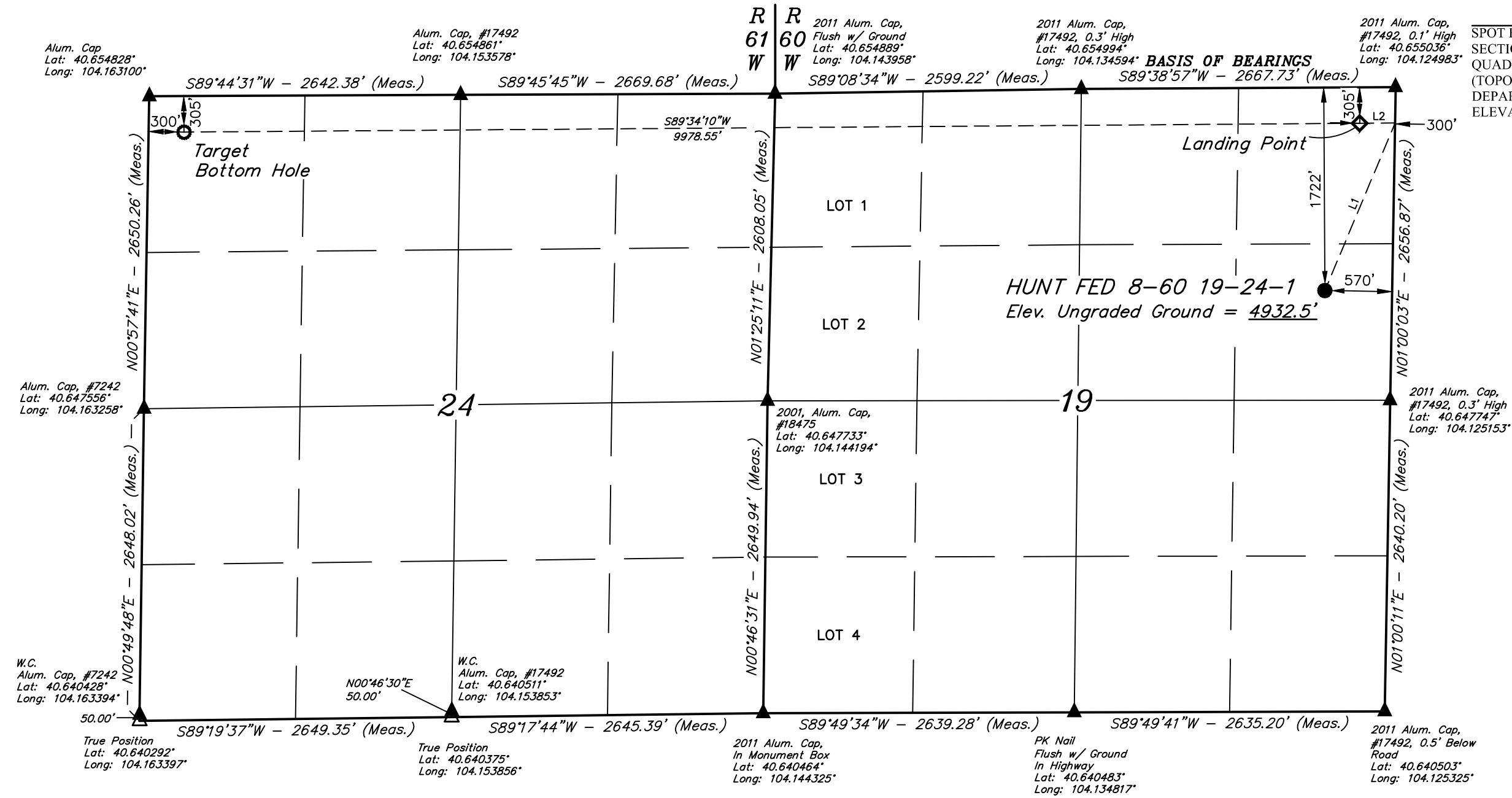
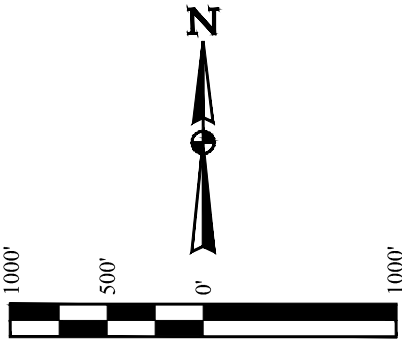
T8N, R60W, 6th P.M.

MALLARD EXPLORATION

HUNT FED 8-60 19-24-1  
SE 1/4 NE 1/4, SECTION 19, T8N, R60W, 6th P.M.  
WELD COUNTY, COLORADO

BASIS OF ELEVATION

SPOT ELEVATION LOCATED AT THE NORTHEAST CORNER OF SECTION 2, T9N, R61W, 6th P.M. TAKEN FROM THE GROVER SOUTH, QUADRANGLE, COLORADO, WELD COUNTY, 7.5 MINUTE QUAD (TOPOGRAPHIC MAP) PUBLISHED BY THE UNITED STATES DEPARTMENT OF THE INTERIOR, GEOLOGICAL SURVEY. SAID ELEVATION IS MARKED AS BEING 5043 FEET.



LINE TABLE		
LINE	DIRECTION	LENGTH
L1	N22°43'10"E	1540.49'
L2	S89°34'10"W	300.09'

NOTE:  
Distances referenced  
on plat to section lines  
are perpendicular.

- LEGEND:
- = PROPOSED WELLHEAD.
  - ◆ = LANDING POINT.
  - = TARGET BOTTOM HOLE.
  - ▲ = SECTION CORNERS LOCATED. (NAD 83)
  - △ = SECTION CORNERS RE-ESTABLISHED. (Not Set on Ground.) (NAD 83)

PDOP = 1.3

NAD 83 (SURFACE LOCATION)	NAD 83 (LANDING POINT)	NAD 83 (TARGET BOTTOM HOLE)
LATITUDE = 40°39'01.08" (40.650301)	LATITUDE = 40°39'15.10" (40.654194)	LATITUDE = 40°39'14.38" (40.653994)
LONGITUDE = 104°07'37.73" (104.127148)	LONGITUDE = 104°07'33.90" (104.126083)	LONGITUDE = 104°09'43.33" (104.162036)
NAD 27 (SURFACE LOCATION)	NAD 27 (LANDING POINT)	NAD 27 (TARGET BOTTOM HOLE)
LATITUDE = 40°39'01.14" (40.650316)	LATITUDE = 40°39'15.15" (40.654209)	LATITUDE = 40°39'14.43" (40.654009)
LONGITUDE = 104°07'35.92" (104.126643)	LONGITUDE = 104°07'32.08" (104.125579)	LONGITUDE = 104°09'41.52" (104.161532)
STATE PLANE NAD 83 (CO. NORTH)	STATE PLANE NAD 83 (CO. NORTH)	STATE PLANE NAD 83 (CO. NORTH)
N: 1482695.96 E: 3380926.53	N: 1484118.58 E: 3381199.93	N: 1483893.28 E: 3371226.49
STATE PLANE NAD 27 (CO. NORTH)	STATE PLANE NAD 27 (CO. NORTH)	STATE PLANE NAD 27 (CO. NORTH)
N: 482694.95 E: 2381076.60	N: 484117.55 E: 2381349.99	N: 483892.39 E: 2371376.25

REV: 1 03-25-20 K.B. (COMPANY, SL, LP & TBH CHANGE)



UELS, LLC  
Corporate Office \* 85 South 200 East  
Vernal, UT 84078 \* (435) 789-1017

SURVEYED BY	ALLEN SHAFFETT, J.C.	03-24-20	SCALE
DRAWN BY	C.C.	09-01-17	1" = 1000'

WELL LOCATION PLAT