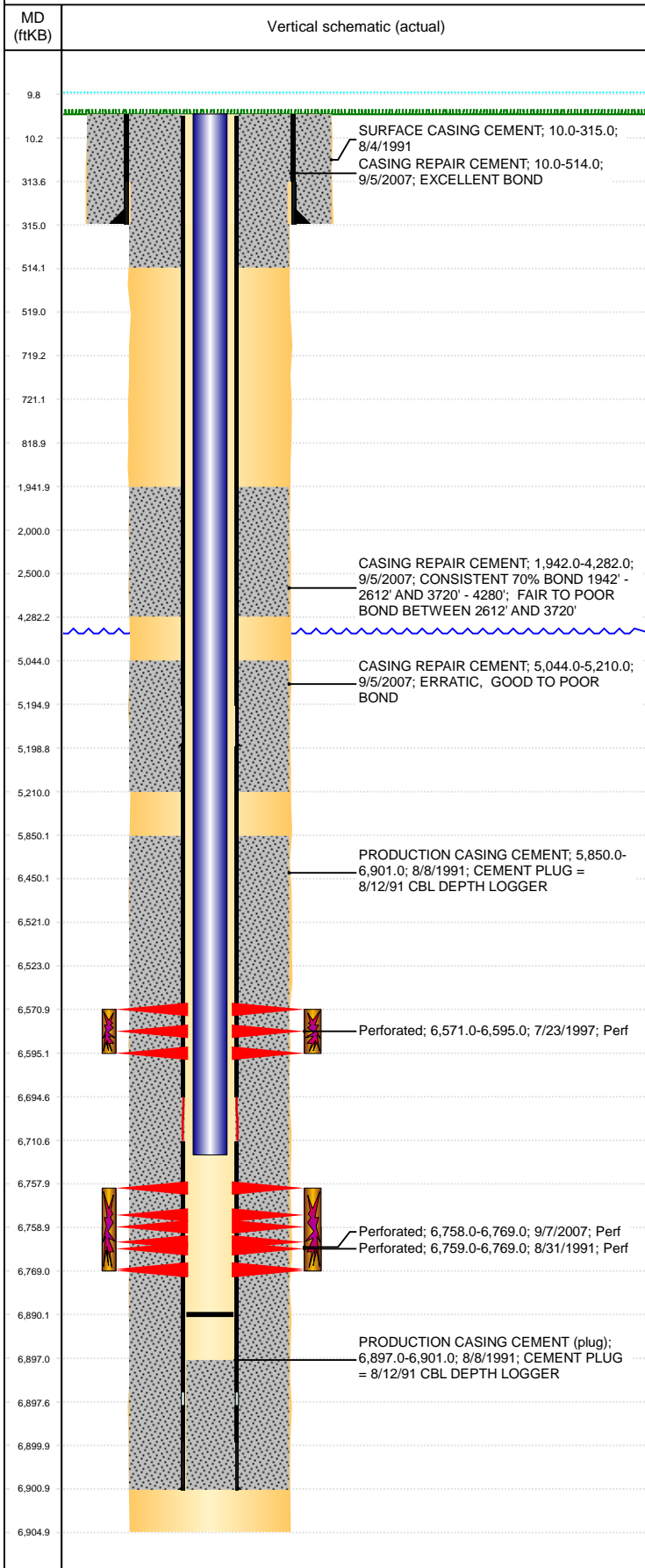


**Well Name: PATRIOT B16-02**

VERTICAL, ORIGINAL HOLE, 7/27/2020 6:11:51 PM



Well Header									
API 05-123-15096		Business Unit DJ BASIN			District 15		Well Config VERTICAL		
KB - GL / MSL (ft... 10.00		Spud Date 8/4/1991		P & A Date		Well Production Status PR			SoRT No
Comment CSG PATCH @ 5195'									
Surface Location (Congressional)									
Qtr 3 NW	Qtr 4 NE	Section 16	Twnshp 5	Twnsh... N	Range 64	Rng E/... W	Actual Latitude (°) 40.40429533	Actual Longitude (°) -104.55187604	
Wellbore Sections									
Section Des			Size (in)			Act Top, MD (ftKB)		Act Btm, MD (ftKB)	
SURFACE			12 1/4			10		315	
PRODUCTION			7 7/8			315		6,905	
Casing Strings									
Csg Des			Run Date	OD (in)	Wt/Len (lb/ft)	Grade	Top, MD (ftKB)	MD (ftKB)	
Surface			8/4/1991	8 5/8	24.00		10.0	315.0	
Production			8/29/2007	2 7/8	6.40	N-80	10.0	5,198.7	
Production			8/8/1991	2 7/8	6.50	N-80	10.0	6,901.0	
Cement									
Des				Start Date		Top (ftKB)		Btm (ftKB)	
SURFACE CASING CEMENT				8/4/1991		10.0		315.0	
PRODUCTION CASING CEMENT				8/8/1991		5,850.0		6,901.0	
CASING REPAIR CEMENT				9/5/2007		10.0		514.0	
CASING REPAIR CEMENT				9/5/2007		1,942.0		4,282.0	
CASING REPAIR CEMENT				9/5/2007		5,044.0		5,210.0	
Zone Statuses									
Zone Name	Status Date	Status	Fluid Type	Job			Prod Method		
CODELL	9/12/1997	PR		RECOMPLETION, 7/22/1997 00:00					
CODELL	2/28/2008	PR		RE-FRAC, 11/8/2005 00:00					
NIOBRARA	7/30/1997	PR		DRILLING/COMPLETION - ORIGINAL, 8/4/1991...					
NIOBRARA	9/12/1997	PR		RECOMPLETION, 7/22/1997 00:00					
Perforation Data									
Linked Zone		Bnch/Stg	Entered Shot Total	Top (ftKB)		Btm (ftKB)		Date	
NIOBRARA, ORIGINAL HOLE			49	6,571.00		6,595.00		7/23/1997	
CODELL, ORIGINAL HOLE			44	6,758.00		6,769.00		9/7/2007	
CODELL, ORIGINAL HOLE			40	6,759.00		6,769.00		8/31/1991	
Stimulation Intervals									
Zone			Start Date			Top (ftKB)		Btm (ftKB)	
NIOBRARA, ORIGINAL HOLE			7/25/1997			6,571.0		6,595.0	
CODELL, ORIGINAL HOLE			10/3/2007			6,758.0		6,769.0	
CODELL, ORIGINAL HOLE			8/31/1991			6,759.0		6,769.0	
Other In Hole									
Run Date	Des			Make		OD (in)	Top (ftKB)	Btm (ftKB)	
Logs									
Date		Type				Top, MD (ftKB)		Btm, MD (ftKB)	
8/8/1991		Compensated Density				3,920.0		6,904.0	
8/12/1991		CBL/CCL/GR				5,750.0		6,860.0	
9/5/2007		Cement Bond				10.0		5,386.0	
1/6/2011		GYRO				10.0		6,730.0	
Plug Back Total Depths									
Date		Type		Com				Depth (ftKB)	
1/6/2011		FILL		SLICKLINE TAGGED.				6,774.0	
1/7/2011		FILL		C/O, TBG TALLY MEASUREMENT.				6,890.0	