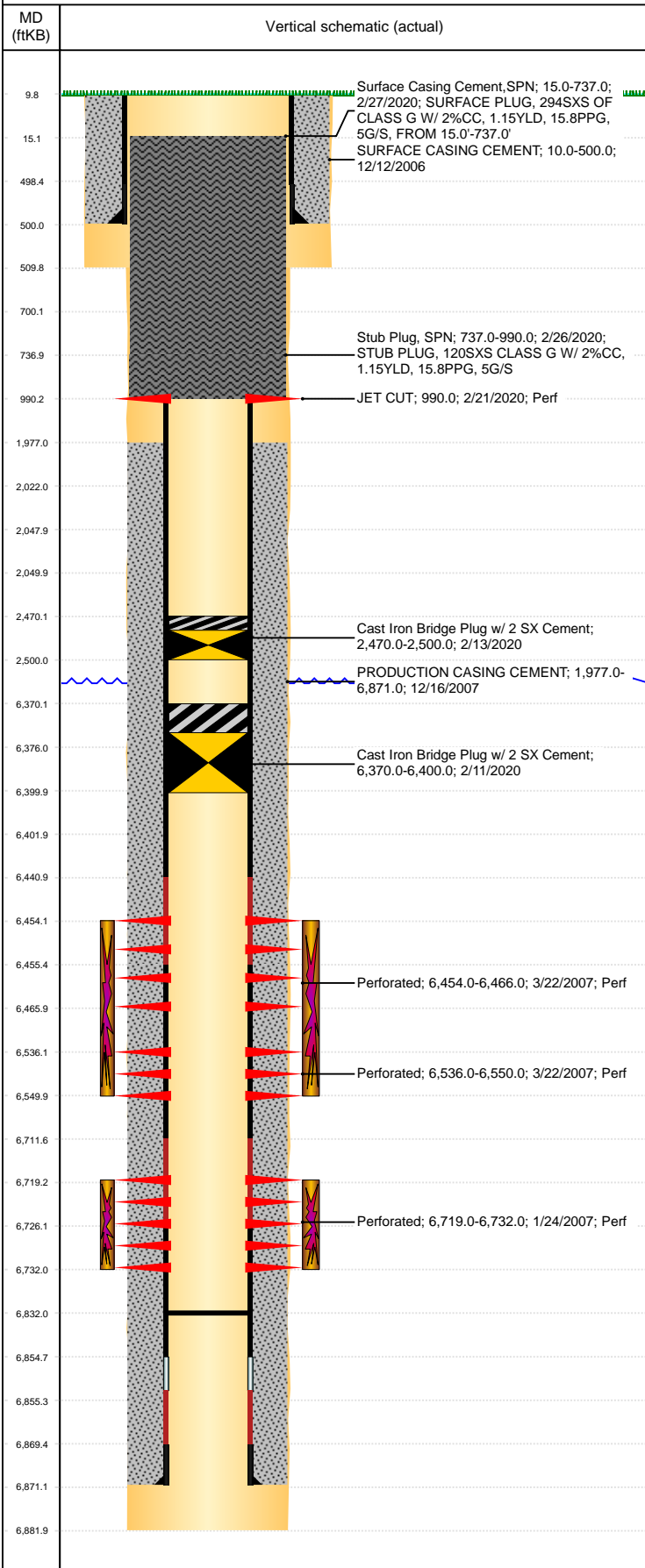


Well Name: MILLAGE C11-17

VERTICAL, ORIGINAL HOLE, 7/23/2020 3:42:00 PM



Well Header									
API 05-123-24531		Business Unit DJ BASIN		District 15		Well Config VERTICAL			
KB - GL / MSL (ft... 10.00		Spud Date 12/12/2006		P & A Date 3/30/2020		Well Production Status PA		SoRT Yes	
Comment CSG REPAIR 1/17/07-1/23/07 - HOLE IN CSG 31ST JT BTWN 1327'-1332'. STATE SHOWS SHUT IN SINCE OCT 2016.									
Surface Location (Congressional)									
Qtr 3 SE	Qtr 4 NE	Section 11	Twnshp 4	Twnsh... N	Range 64	Rng E... W	Actual Latitude (°) 40.33051758	Actual Longitude (°) -104.51291303	
Wellbore Sections									
Section Des		Size (in)		Act Top, MD (ftKB)		Act Btm, MD (ftKB)			
SURFACE		12 1/4		10		510			
PRODUCTION		7 7/8		510		6,882			
Casing Strings									
Csg Des		Run Date		OD (in)	Wt/Len (lb/ft)	Grade	Top, MD (ftKB)	MD (ftKB)	
Surface		12/12/2006		8 5/8	24.00	J-55	10.0	500.0	
Production		12/16/2006		4 1/2	11.60	M-80	10.0	6,871.0	
Cement									
Des		Start Date		Top (ftKB)		Btm (ftKB)			
SURFACE CASING CEMENT		12/12/2006		10.0		500.0			
PRODUCTION CASING CEMENT		12/16/2007		1,977.0		6,871.0			
Stub Plug, SPN		2/26/2020		737.0		990.0			
Surface Casing Cement, SPN		2/27/2020		15.0		737.0			
Zone Statuses									
Zone Name		Status Date	Status	Fluid Type	Job			Prod Method	
NIOBRARA		3/24/2007	PR		DRILLING/COMPLETION - ORIGINAL, 12/12/200...			Flowing	
NIOBRARA		2/11/2020	P&A		PLUG AND ABANDON, 2/10/2020 00:00				
CODELL		3/24/2007	PR		DRILLING/COMPLETION - ORIGINAL, 12/12/200...				
CODELL		2/11/2020	P&A		PLUG AND ABANDON, 2/10/2020 00:00				
Perforation Data									
Linked Zone		Bnch/Stg	Entered Shot Total	Top (ftKB)	Btm (ftKB)	Date			
CODELL, ORIGINAL HOLE				990.00	990.00	2/21/2020			
CODELL, ORIGINAL HOLE				6,454.00	6,466.00	3/22/2007			
NIOBRARA, ORIGINAL HOLE		A	48	6,536.00	6,550.00	3/22/2007			
CODELL, ORIGINAL HOLE			52	6,719.00	6,732.00	1/24/2007			
Stimulation Intervals									
Zone		Start Date		Top (ftKB)		Btm (ftKB)			
NIOBRARA, ORIGINAL HOLE		3/22/2007		6,454.0		6,550.0			
CODELL, ORIGINAL HOLE		3/22/2007		6,719.0		6,732.0			
Other In Hole									
Run Date	Des			Make	OD (in)	Top (ftKB)	Btm (ftKB)		
2/11/2020	Cast Iron Bridge Plug w/ 2 SX Cement				4	6,370.0	6,400.0		
2/13/2020	Cast Iron Bridge Plug w/ 2 SX Cement				4	2,470.0	2,500.0		
Logs									
Date		Type			Top, MD (ftKB)		Btm, MD (ftKB)		
1/8/2007		CEMENT BOND			1,860.0		6,834.0		
12/15/2016		COMPENSATED DENSITY			2,390.0		6,858.0		
12/15/2016		INDUCTION			490.0		6,878.0		
Plug Back Total Depths									
Date		Type		Com			Depth (ftKB)		
1/8/2007		FILL		DEPTH LOGGER ON CBL			6,836.0		
8/16/2007		FILL		DRILL CIFTF FREE, PUSH TO 6832', ROLL HOLE CLEAN. 100'...			6,832.0		