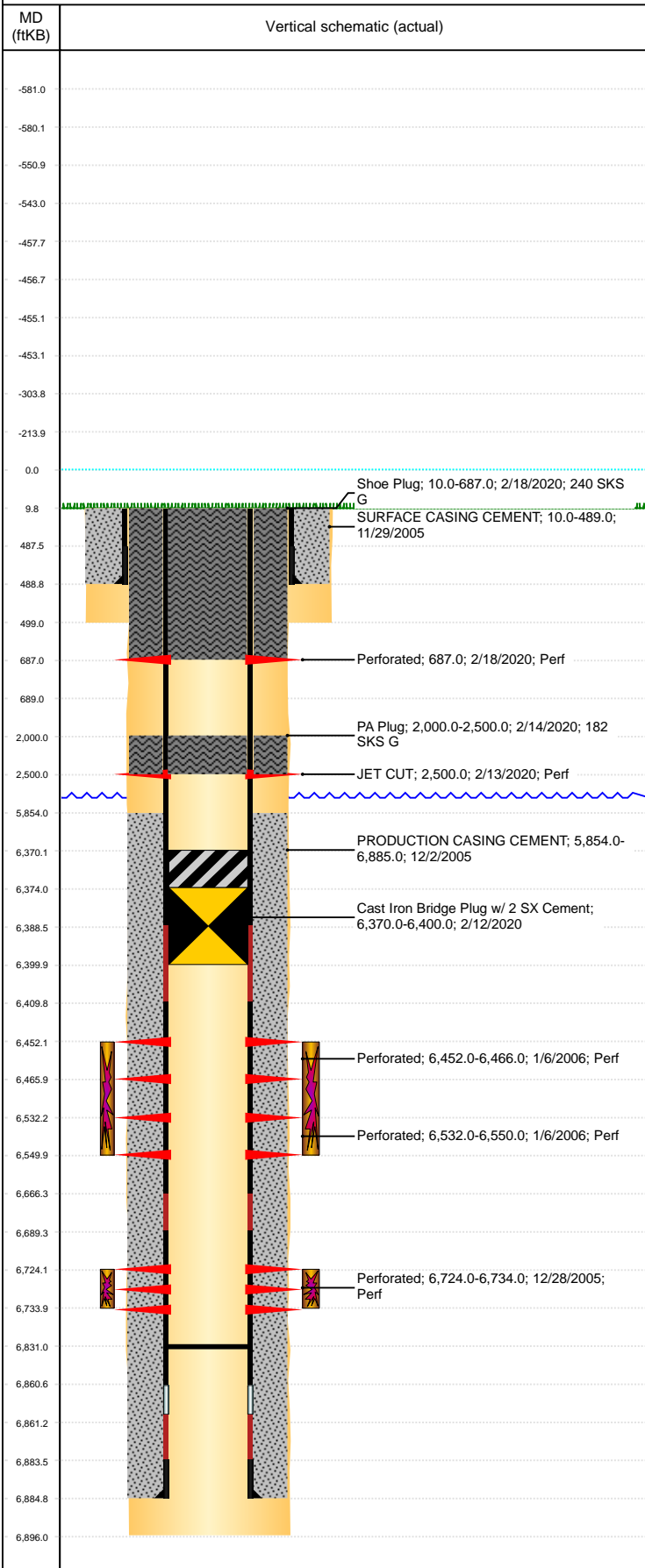


Well Name: MILLAGE C11-08

VERTICAL, ORIGINAL HOLE, 7/22/2020 5:10:06 PM



Well Header									
API 05-123-23397		Business Unit DJ BASIN			District 15		Well Config VERTICAL		
KB - GL / MSL (ft... 10.00		Spud Date 11/28/2005		P & A Date 3/30/2020		Well Production Status PA		SoRT Yes	
Comment DISCREPANCY: DR RPT SPUD 11/28/2005; ST RPT SPUD 11/29/2005. SURFACE CASING SET DEPTH- ST 487(WRITTEN IN), DRL RPT 489'. CHANGE IN LOCATION PER SUNDRY NOTICE 11/9/09. STATE SHOWS SHUT IN SINCE OCT 2016.									
Surface Location (Congressional)									
Qtr 3 SE	Qtr 4 NE	Section 11	Twshp 4	Twsh... N	Range 64	Rng E/... W	Actual Latitude (°) 40.32819949	Actual Longitude (°) -104.50993233	
Wellbore Sections									
Section Des		Size (in)		Act Top, MD (ftKB)		Act Btm, MD (ftKB)			
SURFACE		12 1/4		10		499			
PRODUCTION		7 7/8		499		6,896			
Casing Strings									
Csg Des		Run Date	OD (in)	Wt/Len (lb/ft)	Grade	Top, MD (ftKB)	MD (ftKB)		
Surface		11/29/2005	8 5/8	24.00		10.0	489.0		
Production		12/2/2005	4 1/2	11.60	M-80	10.0	6,885.0		
Cement									
Des		Start Date	Top (ftKB)	Btm (ftKB)					
SURFACE CASING CEMENT		11/29/2005	10.0	489.0					
PRODUCTION CASING CEMENT		12/2/2005	5,854.0	6,885.0					
PA Plug		2/14/2020	2,000.0	2,500.0					
Shoe Plug		2/18/2020	10.0	687.0					
Zone Statuses									
Zone Name	Status Date	Status	Fluid Type	Job			Prod Method		
CODELL	3/28/2006	PR		DRILLING/COMPLETION - ORIGINAL, 11/28/200...			Flowing		
CODELL	2/13/2020	P&A		PLUG AND ABANDON, 2/11/2020 00:00					
NIOBRARA	3/28/2006	PR		DRILLING/COMPLETION - ORIGINAL, 11/28/200...			Flowing		
NIOBRARA	2/13/2020	P&A		PLUG AND ABANDON, 2/11/2020 00:00					
Perforation Data									
Linked Zone	Bnch/Stg	Entered Shot Total	Top (ftKB)	Btm (ftKB)		Date			
		6	687.00	687.00		2/18/2020			
			2,500.00	2,500.00		2/13/2020			
NIOBRARA, ORIGINAL HOLE		84	6,452.00	6,466.00		1/6/2006			
NIOBRARA, ORIGINAL HOLE		108	6,532.00	6,550.00		1/6/2006			
CODELL, ORIGINAL HOLE		40	6,724.00	6,734.00		12/28/2005			
Stimulation Intervals									
Zone		Start Date	Top (ftKB)	Btm (ftKB)					
NIOBRARA, ORIGINAL HOLE		1/6/2006	6,452.0	6,550.0					
CODELL, ORIGINAL HOLE		1/6/2006	6,724.0	6,734.0					
Other In Hole									
Run Date	Des		Make	OD (in)	Top (ftKB)	Btm (ftKB)			
2/12/2020	Cast Iron Bridge Plug w/ 2 SX Cement			4	6,370.0	6,400.0			
Logs									
Date	Type			Top, MD (ftKB)	Btm, MD (ftKB)				
12/2/2005	COMPENSATED DENSITY			3,130.0	6,876.0				
12/2/2005	INDUCTION			480.0	6,896.0				
12/28/2005	CEMENT BOND			5,721.0	6,823.0				
Plug Back Total Depths									
Date	Type	Com			Depth (ftKB)				
12/28/2005	FILL	DEPTH LOGGER ON CBL			6,825.0				
3/28/2006	FILL	D/O CFP, C/O FILL, CIRCULATE CLEAN			6,831.0				