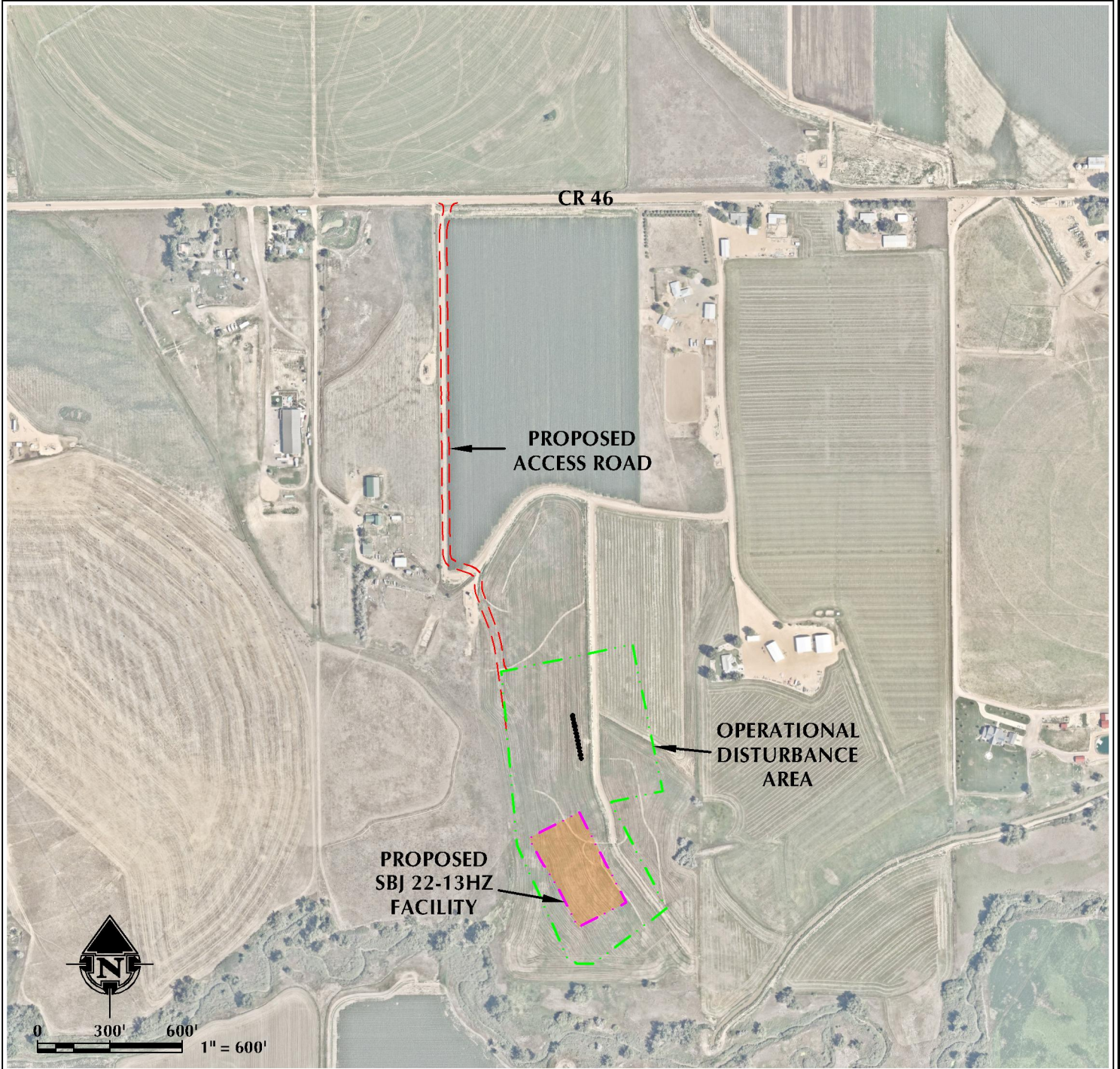


# SBJ 22-13HZ ACCESS MAP

S1/2 NW1/4 & N1/2 SW1/4 SECTION 13, TOWNSHIP 4 NORTH, RANGE 68 WEST, 6TH P.M.



## LEGEND

- PROPOSED WELL
- - - ACCESS
- ▭ (green dashed) DISTURBANCE AREA
- ▭ (pink) PROPOSED FACILITY

INTERSECTION OF  
ACCESS ROAD AND CR 46

LATITUDE: 40.321017°

LONGITUDE: -104.958728°



**609 CONSULTING, LLC**  
LOVELAND OFFICE  
6706 North Franklin Avenue  
Loveland, Colorado 80538  
Phone: 970-776-4331

SHERIDAN OFFICE  
1095 Saberton Avenue  
Sheridan, Wyoming 82801  
Phone: 307-674-0609

DATE SURVEYED: 2/25/2020  
DATE: 12/20/19  
DRAFTER: SJM  
REVISED: 7/10/2020

DATA SOURCES:  
- AERIAL COURTESY OF ESRI, INC.

PREPARED FOR:  
**Kerr-McGee Oil & Gas Onshore L.P.**