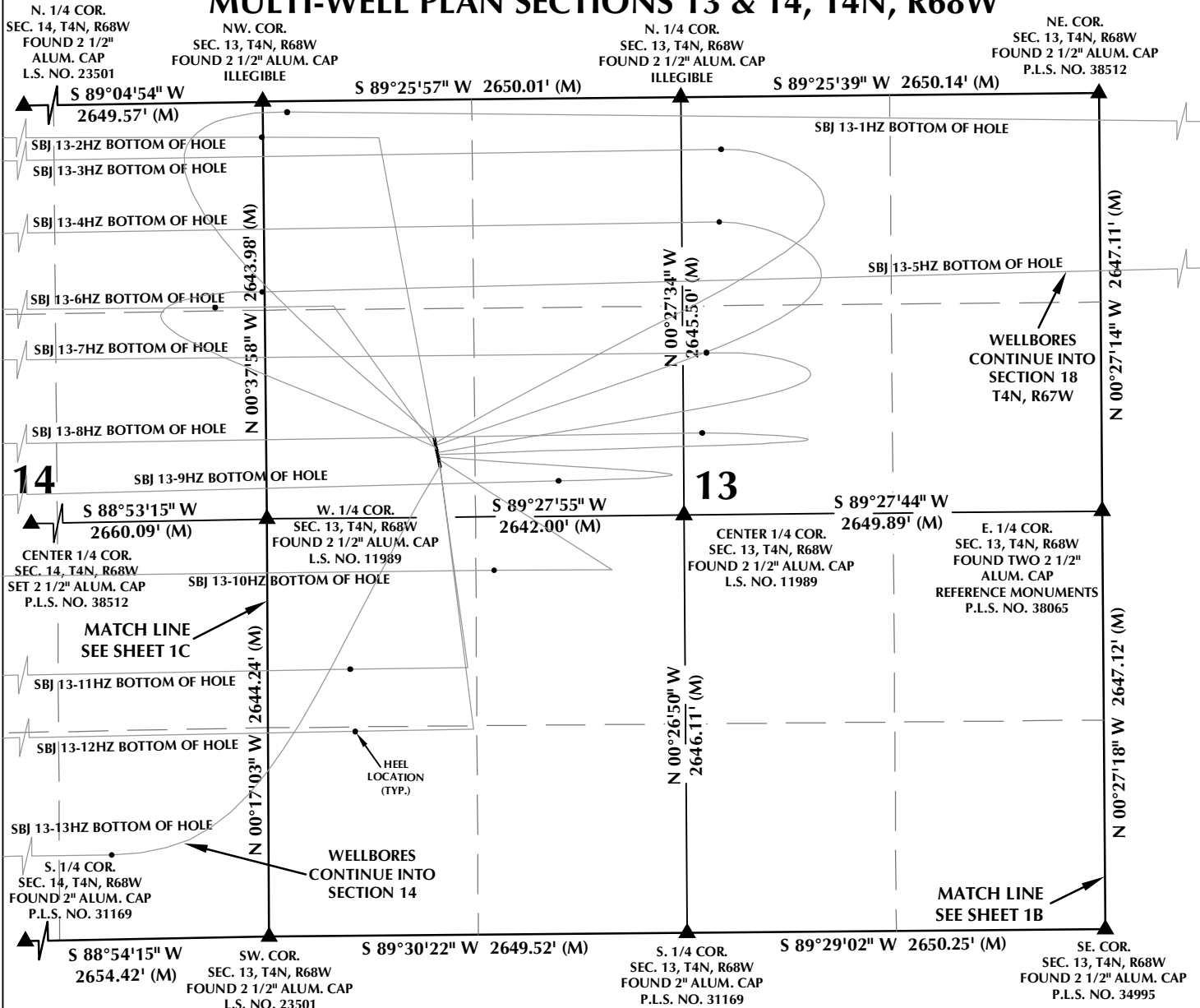


# MULTI-WELL PLAN SECTIONS 13 & 14, T4N, R68W



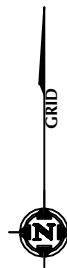
**WELL NOTES:**

- SBJ 13-1HZ**  
SURFACE: 2144' FNL, 1065' FWL, SEC. 13, T4N, R68W  
BOTTOM HOLE: 94' FNL, 2565' FEL, SEC. 18, T4N, R67W
- SBJ 13-2HZ**  
SURFACE: 2159' FNL, 1068' FWL, SEC. 13, T4N, R68W  
BOTTOM HOLE: 62' FNL, 74' FWL, SEC. 15, T4N, R68W
- SBJ 13-3HZ**  
SURFACE: 2173' FNL, 1071' FWL, SEC. 13, T4N, R68W  
BOTTOM HOLE: 345' FNL, 75' FWL, SEC. 15, T4N, R68W
- SBJ 13-4HZ**  
SURFACE: 2188' FNL, 1073' FWL, SEC. 13, T4N, R68W  
BOTTOM HOLE: 798' FNL, 75' FWL, SEC. 15, T4N, R68W
- SBJ 13-5HZ**  
SURFACE: 2203' FNL, 1076' FWL, SEC. 13, T4N, R68W  
BOTTOM HOLE: 1080' FNL, 616' FWL, SEC. 18, T4N, R67W
- SBJ 13-6HZ**  
SURFACE: 2217' FNL, 1079' FWL, SEC. 13, T4N, R68W  
BOTTOM HOLE: 1221' FNL, 75' FWL, SEC. 15, T4N, R68W
- SBJ 13-7HZ**  
SURFACE: 2232' FNL, 1082' FWL, SEC. 13, T4N, R68W  
BOTTOM HOLE: 1548' FNL, 75' FWL, SEC. 15, T4N, R68W

- SBJ 13-8HZ**  
SURFACE: 2247' FNL, 1085' FWL, SEC. 13, T4N, R68W  
BOTTOM HOLE: 2126' FNL, 75' FWL, SEC. 15, T4N, R68W
- SBJ 13-9HZ**  
SURFACE: 2262' FNL, 1088' FWL, SEC. 13, T4N, R68W  
BOTTOM HOLE: 2538' FNL, 75' FWL, SEC. 15, T4N, R68W
- SBJ 13-10HZ**  
SURFACE: 2276' FNL, 1091' FWL, SEC. 13, T4N, R68W  
BOTTOM HOLE: 2370' FNL, 75' FWL, SEC. 15, T4N, R68W
- SBJ 13-11HZ**  
SURFACE: 2291' FNL, 1094' FWL, SEC. 13, T4N, R68W  
BOTTOM HOLE: 1695' FNL, 76' FWL, SEC. 15, T4N, R68W
- SBJ 13-12HZ**  
SURFACE: 2306' FNL, 1096' FWL, SEC. 13, T4N, R68W  
BOTTOM HOLE: 1288' FNL, 75' FWL, SEC. 15, T4N, R68W
- SBJ 13-13HZ**  
SURFACE: 2320' FNL, 1099' FWL, SEC. 13, T4N, R68W  
BOTTOM HOLE: 565' FNL, 75' FWL, SEC. 15, T4N, R68W

**NOTES:**

1. ▲ INDICATES SECTION CORNER.
2. ● INDICATES CALCULATED CORNER.
3. BASIS OF BEARING DERIVED FROM COLORADO COORDINATE SYSTEM OF 1983 NORTH ZONE.
4. ALL MEASURED DISTANCES ARE GRID. COMBINED SCALE FACTOR: .99972596 CALCULATED FROM THE NW. CORNER OF SECTION 13, T4N, R68W.
5. WELL FOOTAGES ARE MEASURED AT RIGHT ANGLES TO THE SECTION LINES.



**WELL PAD - SBJ 22-13HZ**

MULTI-WELL PLAN  
 SBJ 13-1HZ, SBJ 13-2HZ, SBJ 13-3HZ, SBJ 13-4HZ,  
 SBJ 13-5HZ, SBJ 13-6HZ, SBJ 13-7HZ, SBJ 13-8HZ,  
 SBJ 13-9HZ, SBJ 13-10HZ, SBJ 13-11HZ,  
 SBJ 13-12HZ & SBJ 13-13HZ  
 LOCATED IN SECTIONS 13, 14 & 15  
 T4N, R68W, 6TH P.M. &  
 LOCATED IN SECTION 18, T4N, R67W, 6TH P.M.  
 WELD COUNTY, COLORADO

**Kerr-McGee Oil &  
 Gas Onshore L.P.**  
 1099 18th Street  
 Denver, Colorado 80202



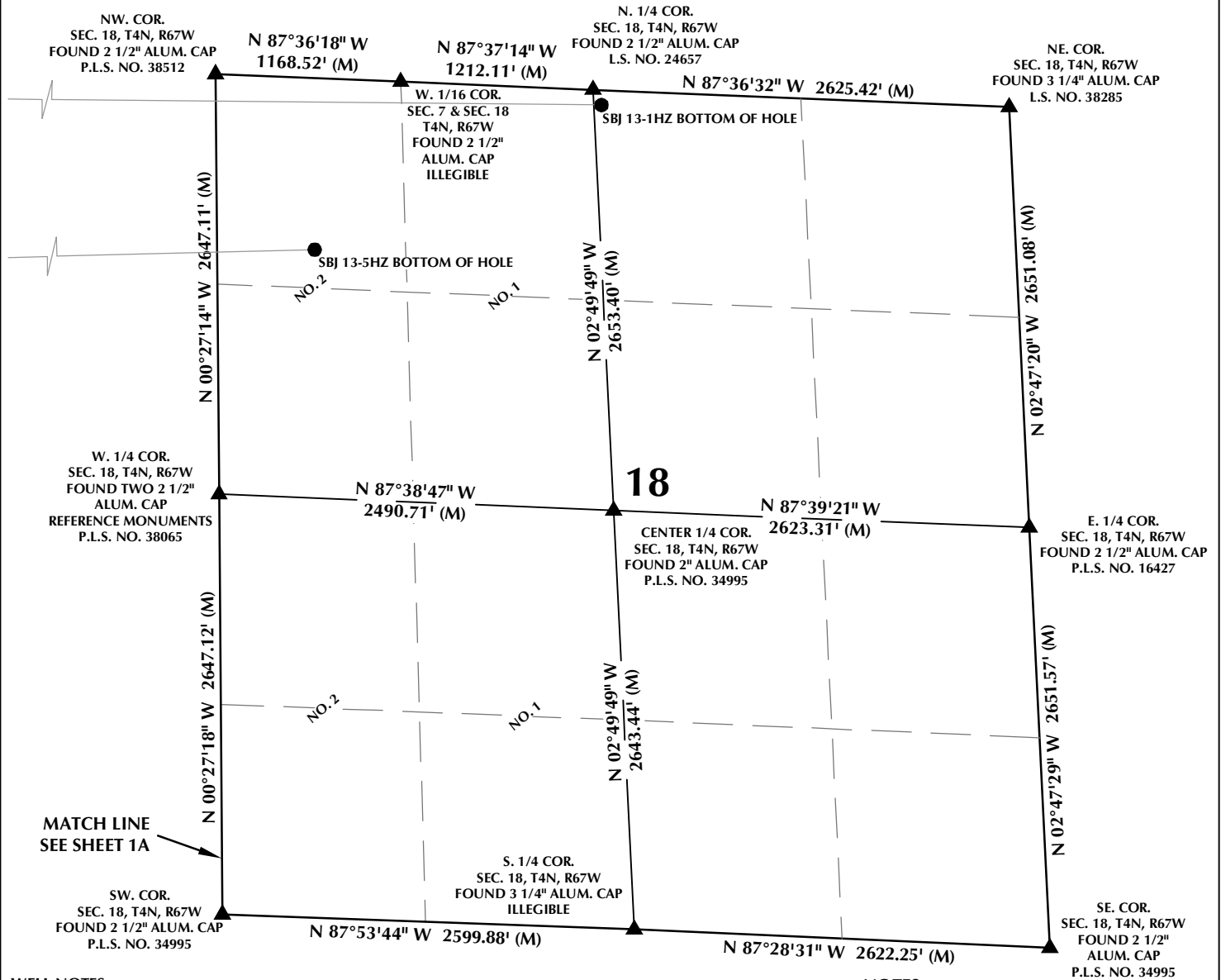
**CONSULTING, LLC**

**SHERIDAN OFFICE**  
 1095 Saberton Avenue  
 Sheridan, Wyoming 82801  
 Phone 307-674-0609

**LOVELAND OFFICE**  
 6706 North Franklin Avenue  
 Loveland, Colorado 80538  
 Phone 970-776-4331

DRAFTED BY: LMO	CHECKED BY: RKF	SHEET NO: <b>1A</b> 1A OF 1
DATE DRAFTED: 1/14/2020	DATE SURVEYED: 2/25/2020	
REVISED: 3/19/2020	FILE NAME: 19-45	

# MULTI-WELL PLAN SECTION 18, T4N, R67W



**WELL NOTES:**

- SBJ 13-1HZ  
SURFACE: 2144' FNL, 1065' FWL, SEC. 13, T4N, R68W  
BOTTOM HOLE: 94' FNL, 2565' FEL, SEC. 18, T4N, R67W
- SBJ 13-2HZ  
SURFACE: 2159' FNL, 1068' FWL, SEC. 13, T4N, R68W  
BOTTOM HOLE: 62' FNL, 74' FWL, SEC. 15, T4N, R68W
- SBJ 13-3HZ  
SURFACE: 2173' FNL, 1071' FWL, SEC. 13, T4N, R68W  
BOTTOM HOLE: 345' FNL, 75' FWL, SEC. 15, T4N, R68W
- SBJ 13-4HZ  
SURFACE: 2188' FNL, 1073' FWL, SEC. 13, T4N, R68W  
BOTTOM HOLE: 798' FNL, 75' FWL, SEC. 15, T4N, R68W
- SBJ 13-5HZ  
SURFACE: 2203' FNL, 1076' FWL, SEC. 13, T4N, R68W  
BOTTOM HOLE: 1080' FNL, 616' FWL, SEC. 18, T4N, R67W
- SBJ 13-6HZ  
SURFACE: 2217' FNL, 1079' FWL, SEC. 13, T4N, R68W  
BOTTOM HOLE: 1221' FNL, 75' FWL, SEC. 15, T4N, R68W
- SBJ 13-7HZ  
SURFACE: 2232' FNL, 1082' FWL, SEC. 13, T4N, R68W  
BOTTOM HOLE: 1548' FNL, 75' FWL, SEC. 15, T4N, R68W

- SBJ 13-8HZ  
SURFACE: 2247' FNL, 1085' FWL, SEC. 13, T4N, R68W  
BOTTOM HOLE: 2126' FNL, 75' FWL, SEC. 15, T4N, R68W
- SBJ 13-9HZ  
SURFACE: 2262' FNL, 1088' FWL, SEC. 13, T4N, R68W  
BOTTOM HOLE: 2538' FNL, 75' FWL, SEC. 15, T4N, R68W
- SBJ 13-10HZ  
SURFACE: 2276' FNL, 1091' FWL, SEC. 13, T4N, R68W  
BOTTOM HOLE: 2370' FNL, 75' FWL, SEC. 15, T4N, R68W
- SBJ 13-11HZ  
SURFACE: 2291' FNL, 1094' FWL, SEC. 13, T4N, R68W  
BOTTOM HOLE: 1695' FNL, 76' FWL, SEC. 15, T4N, R68W
- SBJ 13-12HZ  
SURFACE: 2306' FNL, 1096' FWL, SEC. 13, T4N, R68W  
BOTTOM HOLE: 1288' FNL, 75' FWL, SEC. 15, T4N, R68W
- SBJ 13-13HZ  
SURFACE: 2320' FNL, 1099' FWL, SEC. 13, T4N, R68W  
BOTTOM HOLE: 565' FNL, 75' FWL, SEC. 15, T4N, R68W

**NOTES:**

1. ▲ INDICATES SECTION CORNER.
2. ● INDICATES CALCULATED CORNER.
3. BASIS OF BEARING DERIVED FROM COLORADO COORDINATE SYSTEM OF 1983 NORTH ZONE.
4. ALL MEASURED DISTANCES ARE GRID. COMBINED SCALE FACTOR: .99972596 CALCULATED FROM THE NW. CORNER OF SECTION 13, T4N, R68W.
5. WELL FOOTAGES ARE MEASURED AT RIGHT ANGLES TO THE SECTION LINES.
6. NO. 1 & NO. 2 AS SHOWN HEREON ARE GOVERNMENT LOTS 1 & 2 PER THE ORIGINAL GLO SURVEY.



**WELL PAD - SBJ 22-13HZ**

MULTI-WELL PLAN  
 SBJ 13-1HZ, SBJ 13-2HZ, SBJ 13-3HZ, SBJ 13-4HZ,  
 SBJ 13-5HZ, SBJ 13-6HZ, SBJ 13-7HZ, SBJ 13-8HZ,  
 SBJ 13-9HZ, SBJ 13-10HZ, SBJ 13-11HZ,  
 SBJ 13-12HZ & SBJ 13-13HZ  
 LOCATED IN SECTIONS 13, 14 & 15  
 T4N, R68W, 6TH P.M. &  
 LOCATED IN SECTION 18, T4N, R67W, 6TH P.M.  
 WELD COUNTY, COLORADO

**Kerr-McGee Oil &  
 Gas Onshore L.P.**  
 1099 18th Street  
 Denver, Colorado 80202



**CONSULTING, LLC**

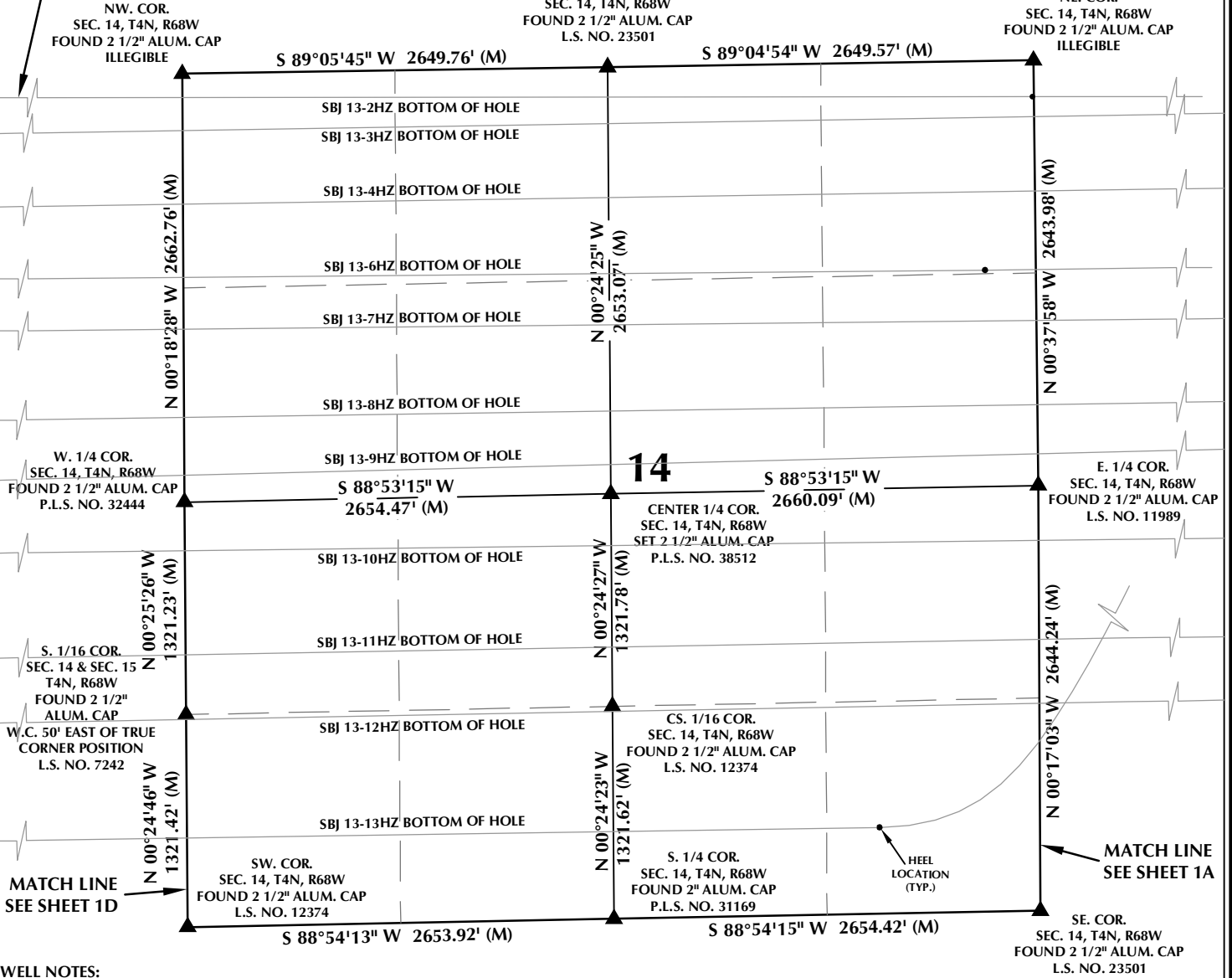
**SHERIDAN OFFICE**  
 1095 Saberton Avenue  
 Sheridan, Wyoming 82801  
 Phone 307-674-0609

**LOVELAND OFFICE**  
 6706 North Franklin Avenue  
 Loveland, Colorado 80538  
 Phone 970-776-4331

DRAFTED BY: LMO	CHECKED BY: RKF	SHEET NO: <b>1B</b> 1B OF 1
DATE DRAFTED: 1/14/2020	DATE SURVEYED: 2/25/2020	
REVISED: 3/19/2020	FILE NAME: 19-45	

# MULTI-WELL PLAN SECTION 14, T4N, R68W

WELLBORES  
CONTINUE INTO  
SECTION 15



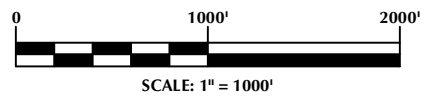
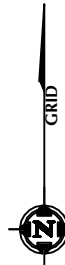
**WELL NOTES:**

- SBJ 13-1HZ**  
SURFACE: 2144' FNL, 1065' FWL, SEC. 13, T4N, R68W  
BOTTOM HOLE: 94' FNL, 2565' FEL, SEC. 18, T4N, R67W
- SBJ 13-2HZ**  
SURFACE: 2159' FNL, 1068' FWL, SEC. 13, T4N, R68W  
BOTTOM HOLE: 62' FNL, 74' FWL, SEC. 15, T4N, R68W
- SBJ 13-3HZ**  
SURFACE: 2173' FNL, 1071' FWL, SEC. 13, T4N, R68W  
BOTTOM HOLE: 345' FNL, 75' FWL, SEC. 15, T4N, R68W
- SBJ 13-4HZ**  
SURFACE: 2188' FNL, 1073' FWL, SEC. 13, T4N, R68W  
BOTTOM HOLE: 798' FNL, 75' FWL, SEC. 15, T4N, R68W
- SBJ 13-5HZ**  
SURFACE: 2203' FNL, 1076' FWL, SEC. 13, T4N, R68W  
BOTTOM HOLE: 1080' FNL, 616' FWL, SEC. 18, T4N, R67W
- SBJ 13-6HZ**  
SURFACE: 2217' FNL, 1079' FWL, SEC. 13, T4N, R68W  
BOTTOM HOLE: 1221' FNL, 75' FWL, SEC. 15, T4N, R68W
- SBJ 13-7HZ**  
SURFACE: 2232' FNL, 1082' FWL, SEC. 13, T4N, R68W  
BOTTOM HOLE: 1548' FNL, 75' FWL, SEC. 15, T4N, R68W

- SBJ 13-8HZ**  
SURFACE: 2247' FNL, 1085' FWL, SEC. 13, T4N, R68W  
BOTTOM HOLE: 2126' FNL, 75' FWL, SEC. 15, T4N, R68W
- SBJ 13-9HZ**  
SURFACE: 2262' FNL, 1088' FWL, SEC. 13, T4N, R68W  
BOTTOM HOLE: 2538' FNL, 75' FWL, SEC. 15, T4N, R68W
- SBJ 13-10HZ**  
SURFACE: 2276' FNL, 1091' FWL, SEC. 13, T4N, R68W  
BOTTOM HOLE: 2370' FNL, 75' FWL, SEC. 15, T4N, R68W
- SBJ 13-11HZ**  
SURFACE: 2291' FNL, 1094' FWL, SEC. 13, T4N, R68W  
BOTTOM HOLE: 1695' FNL, 76' FWL, SEC. 15, T4N, R68W
- SBJ 13-12HZ**  
SURFACE: 2306' FNL, 1096' FWL, SEC. 13, T4N, R68W  
BOTTOM HOLE: 1288' FNL, 75' FWL, SEC. 15, T4N, R68W
- SBJ 13-13HZ**  
SURFACE: 2320' FNL, 1099' FWL, SEC. 13, T4N, R68W  
BOTTOM HOLE: 565' FNL, 75' FWL, SEC. 15, T4N, R68W

**NOTES:**

1. ▲ INDICATES SECTION CORNER.
2. ● INDICATES CALCULATED CORNER.
3. BASIS OF BEARING DERIVED FROM COLORADO COORDINATE SYSTEM OF 1983 NORTH ZONE.
4. ALL MEASURED DISTANCES ARE GRID. COMBINED SCALE FACTOR: .99972596 CALCULATED FROM THE NW. CORNER OF SECTION 13, T4N, R68W.
5. WELL FOOTAGES ARE MEASURED AT RIGHT ANGLES TO THE SECTION LINES.



**WELL PAD - SBJ 22-13HZ**

MULTI-WELL PLAN  
SBJ 13-1HZ, SBJ 13-2HZ, SBJ 13-3HZ, SBJ 13-4HZ,  
SBJ 13-5HZ, SBJ 13-6HZ, SBJ 13-7HZ, SBJ 13-8HZ,  
SBJ 13-9HZ, SBJ 13-10HZ, SBJ 13-11HZ,  
SBJ 13-12HZ & SBJ 13-13HZ  
LOCATED IN SECTIONS 13, 14 & 15  
T4N, R68W, 6TH P.M. &  
LOCATED IN SECTION 18, T4N, R67W, 6TH P.M.  
WELD COUNTY, COLORADO

**Kerr-McGee Oil &  
Gas Onshore L.P.**  
1099 18th Street  
Denver, Colorado 80202



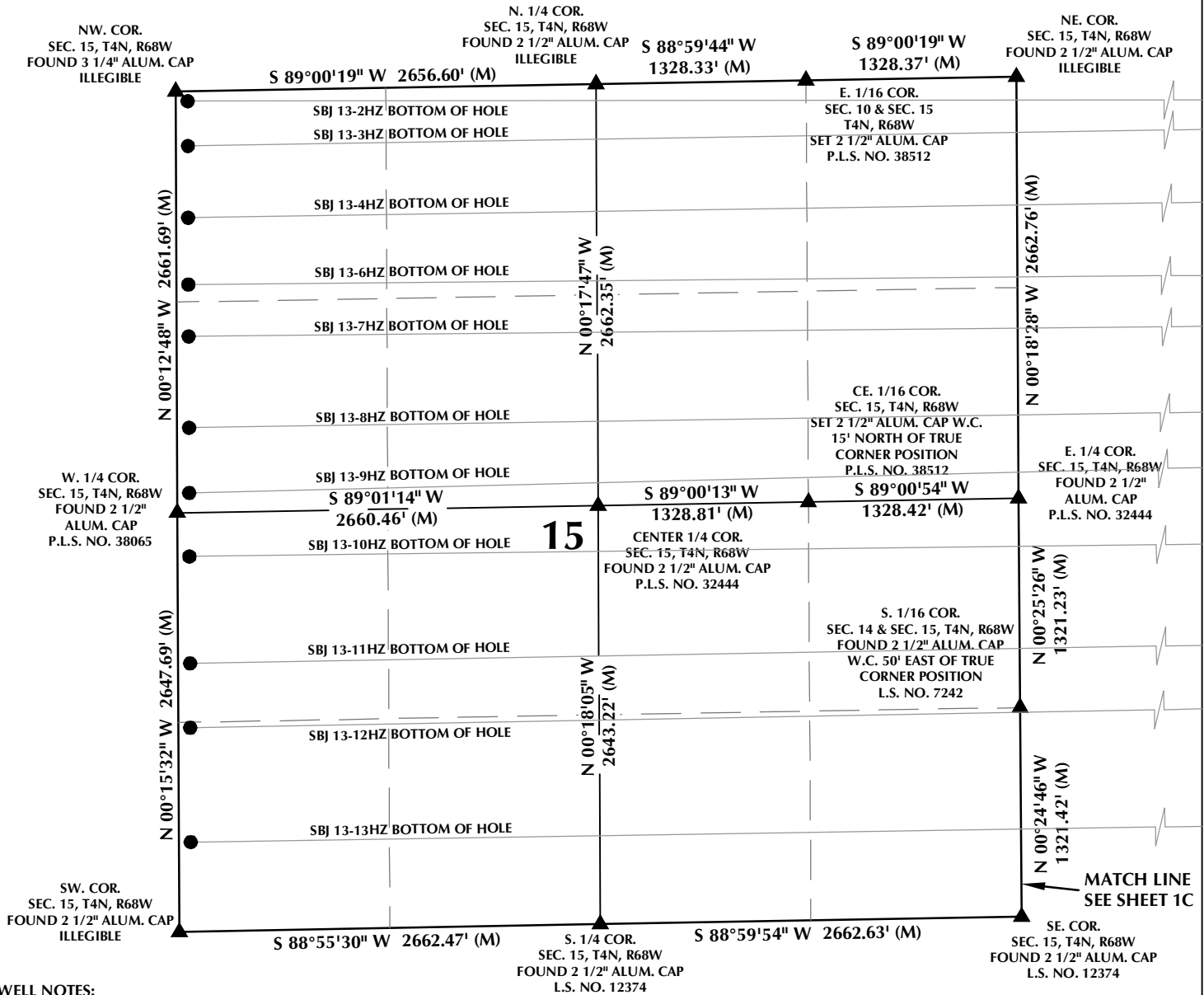
**CONSULTING, LLC**

**SHERIDAN OFFICE**  
1095 Saberton Avenue  
Sheridan, Wyoming 82801  
Phone 307-674-0609

**LOVELAND OFFICE**  
6706 North Franklin Avenue  
Loveland, Colorado 80538  
Phone 970-776-4331

DRAFTED BY: LMO	CHECKED BY: RKF	SHEET NO: <b>1C</b> 1C OF 1
DATE DRAFTED: 1/14/2020	DATE SURVEYED: 2/25/2020	
REVISED: 3/19/2020	FILE NAME: 19-45	

# MULTI-WELL PLAN SECTION 15, T4N, R68W



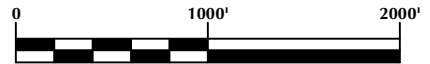
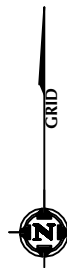
**WELL NOTES:**

- SBJ 13-1HZ**  
SURFACE: 2144' FNL, 1065' FWL, SEC. 13, T4N, R68W  
BOTTOM HOLE: 94' FNL, 2565' FEL, SEC. 18, T4N, R67W
- SBJ 13-2HZ**  
SURFACE: 2159' FNL, 1068' FWL, SEC. 13, T4N, R68W  
BOTTOM HOLE: 62' FNL, 74' FWL, SEC. 15, T4N, R68W
- SBJ 13-3HZ**  
SURFACE: 2173' FNL, 1071' FWL, SEC. 13, T4N, R68W  
BOTTOM HOLE: 345' FNL, 75' FWL, SEC. 15, T4N, R68W
- SBJ 13-4HZ**  
SURFACE: 2188' FNL, 1073' FWL, SEC. 13, T4N, R68W  
BOTTOM HOLE: 798' FNL, 75' FWL, SEC. 15, T4N, R68W
- SBJ 13-5HZ**  
SURFACE: 2203' FNL, 1076' FWL, SEC. 13, T4N, R68W  
BOTTOM HOLE: 1080' FNL, 616' FWL, SEC. 18, T4N, R67W
- SBJ 13-6HZ**  
SURFACE: 2217' FNL, 1079' FWL, SEC. 13, T4N, R68W  
BOTTOM HOLE: 1221' FNL, 75' FWL, SEC. 15, T4N, R68W
- SBJ 13-7HZ**  
SURFACE: 2232' FNL, 1082' FWL, SEC. 13, T4N, R68W  
BOTTOM HOLE: 1548' FNL, 75' FWL, SEC. 15, T4N, R68W

- SBJ 13-8HZ**  
SURFACE: 2247' FNL, 1085' FWL, SEC. 13, T4N, R68W  
BOTTOM HOLE: 2126' FNL, 75' FWL, SEC. 15, T4N, R68W
- SBJ 13-9HZ**  
SURFACE: 2262' FNL, 1088' FWL, SEC. 13, T4N, R68W  
BOTTOM HOLE: 2538' FNL, 75' FWL, SEC. 15, T4N, R68W
- SBJ 13-10HZ**  
SURFACE: 2276' FNL, 1091' FWL, SEC. 13, T4N, R68W  
BOTTOM HOLE: 2370' FNL, 75' FWL, SEC. 15, T4N, R68W
- SBJ 13-11HZ**  
SURFACE: 2291' FNL, 1094' FWL, SEC. 13, T4N, R68W  
BOTTOM HOLE: 1695' FNL, 76' FWL, SEC. 15, T4N, R68W
- SBJ 13-12HZ**  
SURFACE: 2306' FNL, 1096' FWL, SEC. 13, T4N, R68W  
BOTTOM HOLE: 1288' FNL, 75' FWL, SEC. 15, T4N, R68W
- SBJ 13-13HZ**  
SURFACE: 2320' FNL, 1099' FWL, SEC. 13, T4N, R68W  
BOTTOM HOLE: 565' FNL, 75' FWL, SEC. 15, T4N, R68W

**NOTES:**

- ▲ INDICATES SECTION CORNER.
- INDICATES CALCULATED CORNER.
- BASIS OF BEARING DERIVED FROM COLORADO COORDINATE SYSTEM OF 1983 NORTH ZONE.
- ALL MEASURED DISTANCES ARE GRID. COMBINED SCALE FACTOR: .99972596 CALCULATED FROM THE NW. CORNER OF SECTION 13, T4N, R68W.
- WELL FOOTAGES ARE MEASURED AT RIGHT ANGLES TO THE SECTION LINES.



**WELL PAD - SBJ 22-13HZ**

MULTI-WELL PLAN  
SBJ 13-1HZ, SBJ 13-2HZ, SBJ 13-3HZ, SBJ 13-4HZ,  
SBJ 13-5HZ, SBJ 13-6HZ, SBJ 13-7HZ, SBJ 13-8HZ,  
SBJ 13-9HZ, SBJ 13-10HZ, SBJ 13-11HZ,  
SBJ 13-12HZ & SBJ 13-13HZ  
LOCATED IN SECTIONS 13, 14 & 15  
T4N, R68W, 6TH P.M. &  
LOCATED IN SECTION 18, T4N, R67W, 6TH P.M.  
WELD COUNTY, COLORADO

**Kerr-McGee Oil &  
Gas Onshore L.P.**  
1099 18th Street  
Denver, Colorado 80202



**CONSULTING, LLC**

**SHERIDAN OFFICE**  
1095 Saberton Avenue  
Sheridan, Wyoming 82801  
Phone 307-674-0609

**LOVELAND OFFICE**  
6706 North Franklin Avenue  
Loveland, Colorado 80538  
Phone 970-776-4331

DRAFTED BY: LMO	CHECKED BY: RKF	SHEET NO: <b>1D</b> 1D OF 1
DATE DRAFTED: 1/14/2020	DATE SURVEYED: 2/25/2020	
REVISED: 3/19/2020	FILE NAME: 19-45	