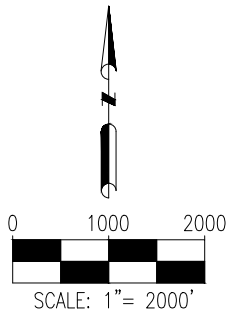
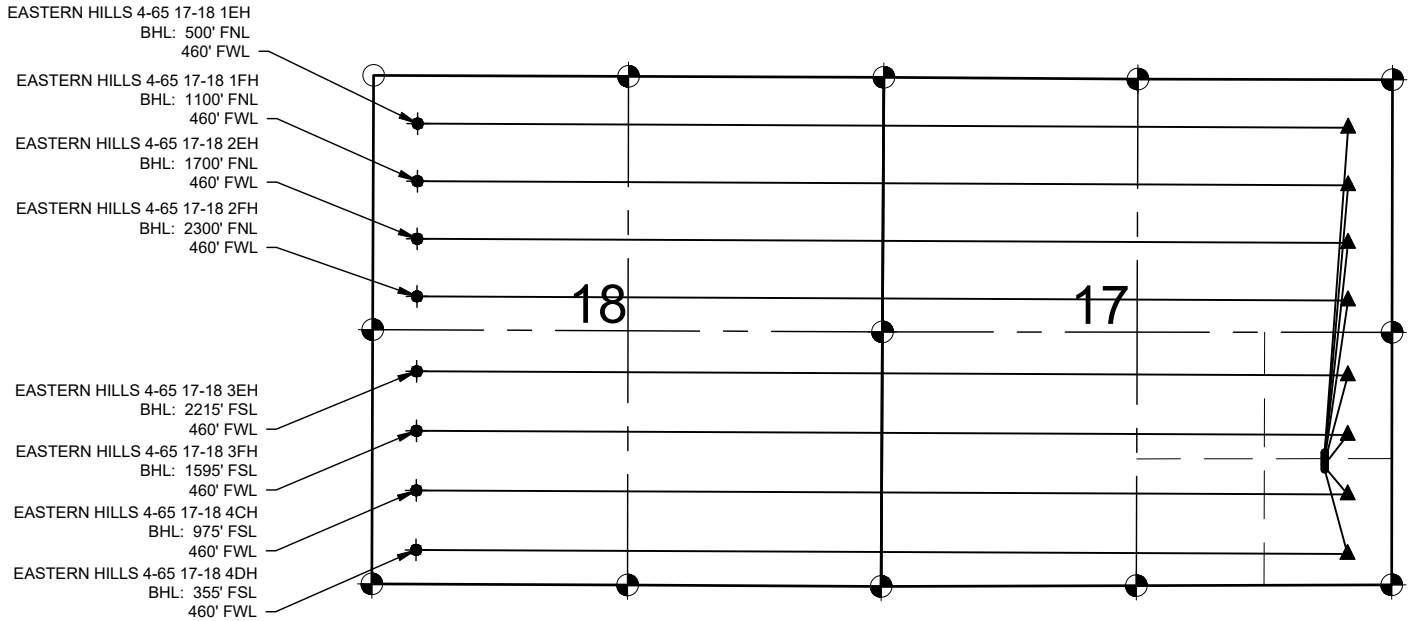


EASTERN HILLS 4-65 17-18 3AH-3DH, 4AH-4DH PAD MULTI-WELL PLAN



LEGEND

- = EXISTING MONUMENT
- = CALCULATED POSITION
- = PROPOSED WELL
- ◆ = EXISTING WELL
- ▲ = BOTTOM HOLE
- ▲ = LANDING POINT
- BHL = BOTTOM HOLE LOCATION

NOTES:

- THIS FIELD SURVEY CONFORMS TO THE MINIMUM STANDARDS SET BY THE C.O.G.C.C., RULE NO. 215
- ALL DISTANCES AND BEARINGS SHOWN HEREON ARE GROUND VALUES AS GPS MEASURED IN THE FIELD, WITH TIES TO WELLS MEASURED PERPENDICULAR TO LINES SHOWN HEREON. THIS LOW DISTORTION PROJECTION (LDP) IS BASED ON THE NORTH AMERICAN DATUM OF 1983, U.S. SURVEY FOOT WITH A LATITUDE ORIGIN OF 39.696714°N, A CENTRAL MERIDIAN LONGITUDE OF 104.659538°W, AND A SCALE FACTOR ON THE CENTRAL MERIDIAN OF 1.000269 (EXACT). THE LDP BASIS OF BEARINGS IS GEODETIC NORTH.
- FIELD VERIFICATION OF MONUMENTS COMPLETED WITHIN 1 YEAR OF FIELD DATE, UNLESS OTHERWISE NOTED.

NOTES:

- EASTERN HILLS 4-65 17-18 1EH TO BE AT 1380' FSL & 700' FEL.
BOTTOM HOLE AT 500' FNL & 460' FWL, SEC. 18.
- EASTERN HILLS 4-65 17-18 1FH TO BE AT 1355' FSL & 700' FEL.
BOTTOM HOLE AT 1100' FNL & 460' FWL, SEC. 18.
- EASTERN HILLS 4-65 17-18 2EH TO BE AT 1330' FSL & 700' FEL.
BOTTOM HOLE AT 1700' FNL & 460' FWL, SEC. 18.
- EASTERN HILLS 4-65 17-18 2FH TO BE AT 1305' FSL & 700' FEL.
BOTTOM HOLE AT 2300' FNL & 460' FWL, SEC. 18.
- EASTERN HILLS 4-65 17-18 3EH TO BE AT 1280' FSL & 700' FEL.
BOTTOM HOLE AT 2215' FSL & 460' FWL, SEC. 18.
- EASTERN HILLS 4-65 17-18 3FH TO BE AT 1255' FSL & 700' FEL.
BOTTOM HOLE AT 1595' FSL & 460' FWL, SEC. 18.
- EASTERN HILLS 4-65 17-18 4CH TO BE AT 1230' FSL & 700' FEL.
BOTTOM HOLE AT 975' FSL & 460' FWL, SEC. 18.
- EASTERN HILLS 4-65 17-18 4DH TO BE AT 1205' FSL & 700' FEL.
BOTTOM HOLE AT 355' FSL & 460' FWL, SEC. 18.

