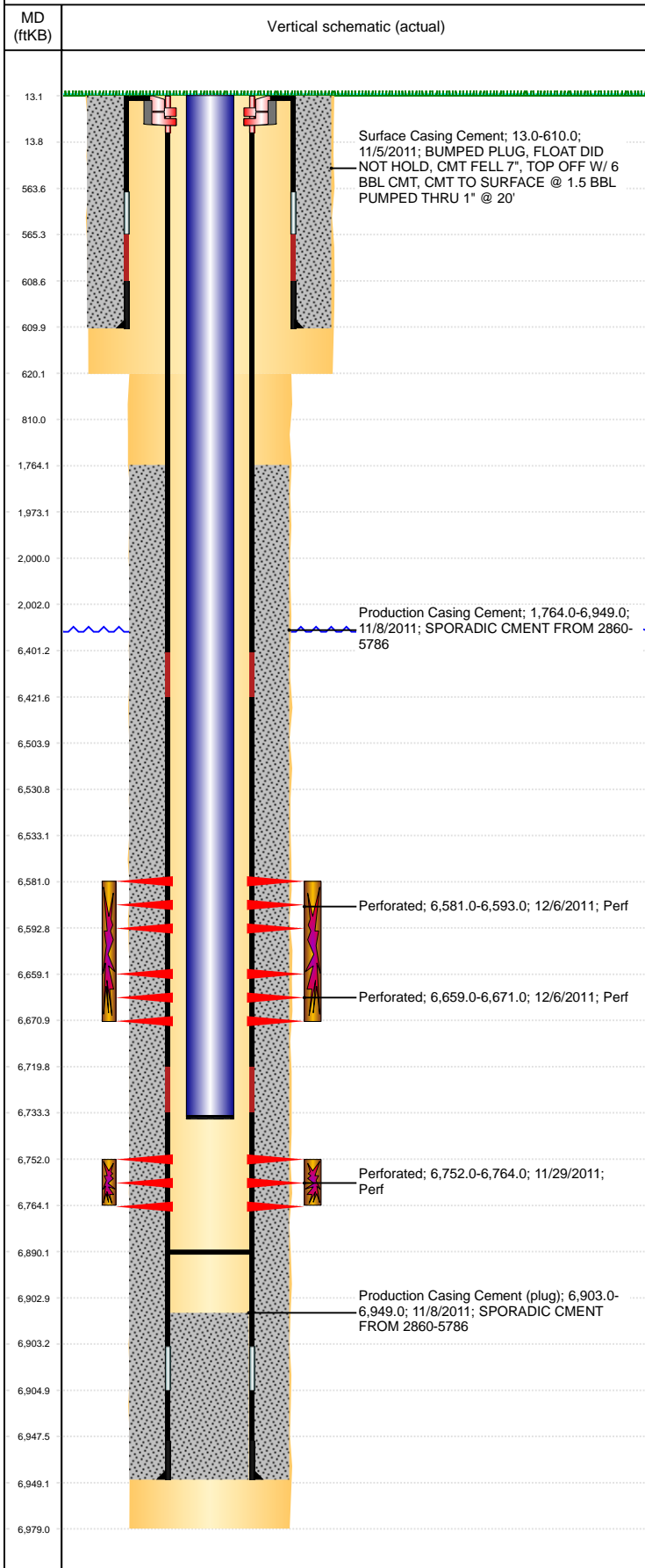


Well Name: PETERSON B10-25

VERTICAL, ORIGINAL HOLE, 7/21/2020 5:36:10 PM



Well Header									
API 05-123-32053		Business Unit DJ BASIN			District 15		Well Config VERTICAL		
KB - GL / MSL (ft... 13.00		Spud Date 11/4/2011		P & A Date		Well Production Status PR			SoRT No
Comment									
Surface Location (Congressional)									
Qtr 3 NE	Qtr 4 SW	Section 10	Twnshp 5	Twnsh... N	Range 64	Rng E/... W	Actual Latitude (°) 40.41017978	Actual Longitude (°) -104.54088421	
Wellbore Sections									
Section Des			Size (in)			Act Top, MD (ftKB)		Act Btm, MD (ftKB)	
SURFACE			12 1/4			13		620	
PRODUCTION			7 7/8			620		6,979	
Casing Strings									
Csg Des			Run Date		OD (in)	Wt/Len (lb/ft)	Grade	Top, MD (ftKB)	MD (ftKB)
Surface			11/5/2011		8 5/8	24.00	J-55	13.0	610.0
PRODUCTION			11/7/2011		4 1/2	11.60	M-80	13.0	6,949.0
Cement									
Des					Start Date		Top (ftKB)		Btm (ftKB)
Surface Casing Cement					11/5/2011		13.0		610.0
Production Casing Cement					11/8/2011		1,764.0		6,949.0
Zone Statuses									
Zone Name		Status Date	Status	Fluid Type	Job			Prod Method	
CODELL		1/4/2012	PR		DRILLING/COMPLETION - ORIGINAL, 11/4/2011...				
NIOBRARA		1/4/2012	PR		DRILLING/COMPLETION - ORIGINAL, 11/4/2011...				
Perforation Data									
Linked Zone			Bnch/Stg	Entered Shot Total	Top (ftKB)		Btm (ftKB)		Date
NIOBRARA, ORIGINAL HOLE			B	24	6,581.00		6,593.00		12/6/2011
NIOBRARA, ORIGINAL HOLE			C	24	6,659.00		6,671.00		12/6/2011
CODELL, ORIGINAL HOLE				48	6,752.00		6,764.00		11/29/2011
Stimulation Intervals									
Zone					Start Date		Top (ftKB)		Btm (ftKB)
NIOBRARA, ORIGINAL HOLE					12/6/2011		6,581.0		6,671.0
CODELL, ORIGINAL HOLE					12/6/2011		6,752.0		6,764.0
Other In Hole									
Run Date		Des			Make		OD (in)	Top (ftKB)	Btm (ftKB)
Logs									
Date		Type					Top, MD (ftKB)		Btm, MD (ftKB)
11/7/2011		Caliper/Comp. Density/Neutron/GR/SP/ML					2,440.0		6,945.0
11/7/2011		DIL/GR/SP/Caliper					610.0		6,965.0
11/18/2011		CBL/CCL/GR					1,390.0		6,855.0
11/27/2013		GYRO					13.0		6,650.0
Plug Back Total Depths									
Date		Type			Com				Depth (ftKB)
11/18/2011		FILL			DEPTH LOGGER				6,855.0
1/25/2012		PLUG REMNANTS			PLUG REMNANTS				6,890.0