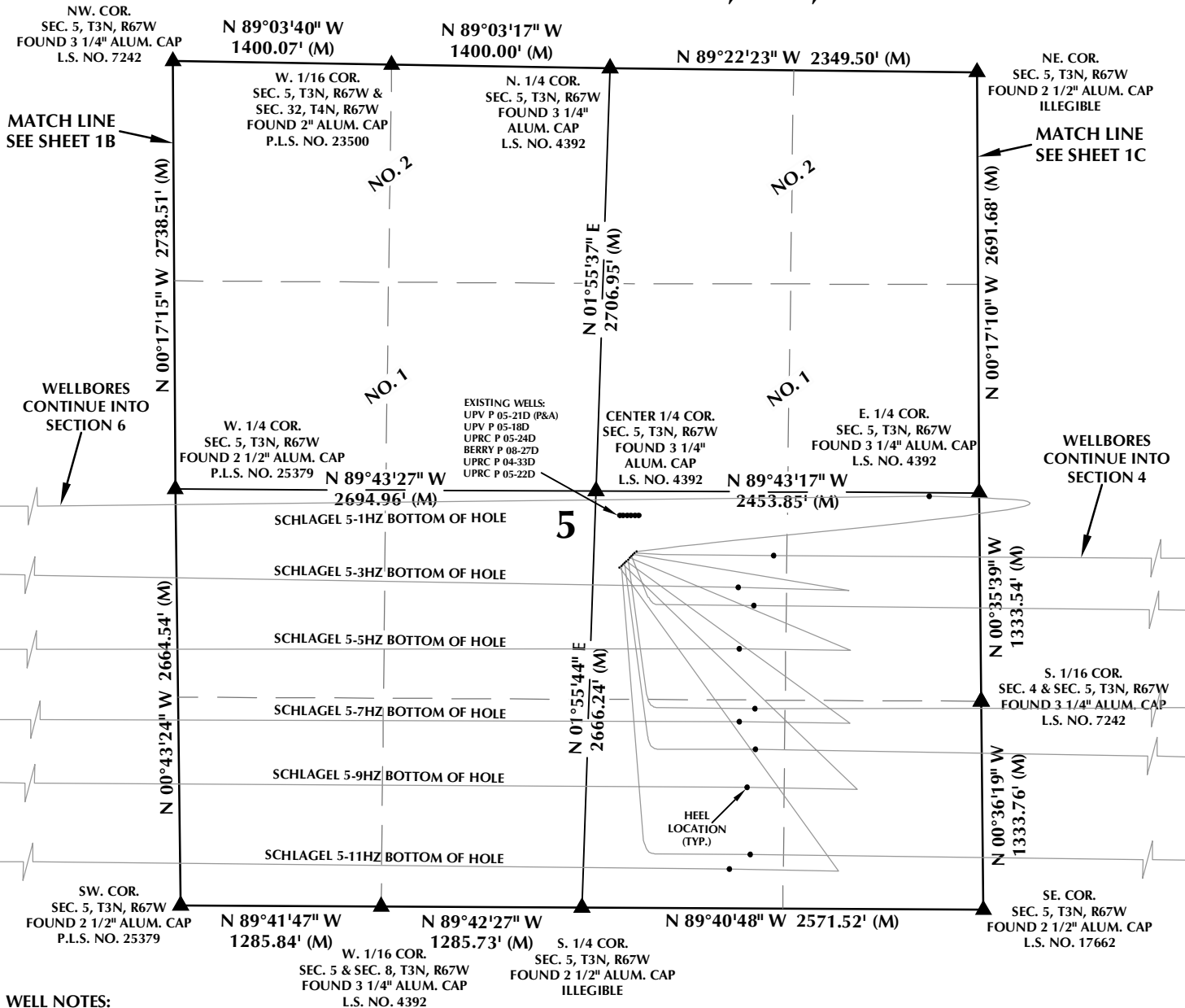


MULTI-WELL PLAN SECTION 5, T3N, R67W



WELL NOTES:

- SCHLAGEL 5-1HZ**
SURFACE: 2280' FSL, 2199' FEL, SEC. 5
BOTTOM HOLE: 2384' FSL, 470' FWL, SEC. 6
- SCHLAGEL 5-2HZ**
SURFACE: 2270' FSL, 2110' FEL, SEC. 5
BOTTOM HOLE: 2350' FSL, 968' FWL, SEC. 1
- SCHLAGEL 5-3HZ**
SURFACE: 2259' FSL, 2220' FEL, SEC. 5
BOTTOM HOLE: 2046' FSL, 470' FWL, SEC. 6
- SCHLAGEL 5-4HZ**
SURFACE: 2249' FSL, 2231' FEL, SEC. 5
BOTTOM HOLE: 1950' FSL, 370' FWL, SEC. 1
- SCHLAGEL 5-5HZ**
SURFACE: 2238' FSL, 2242' FEL, SEC. 5
BOTTOM HOLE: 1505' FSL, 470' FWL, SEC. 6
- SCHLAGEL 5-6HZ**
SURFACE: 2228' FSL, 2253' FEL, SEC. 5
BOTTOM HOLE: 1487' FSL, 21' FWL, SEC. 1
- SCHLAGEL 5-7HZ**
SURFACE: 2217' FSL, 2264' FEL, SEC. 5
BOTTOM HOLE: 1066' FSL, 470' FWL, SEC. 6
- SCHLAGEL 5-8HZ**
SURFACE: 2206' FSL, 2274' FEL, SEC. 5
BOTTOM HOLE: 909' FSL, 206' FEL, SEC. 2
- SCHLAGEL 5-9HZ**
SURFACE: 2196' FSL, 2285' FEL, SEC. 5
BOTTOM HOLE: 675' FSL, 470' FWL, SEC. 6
- SCHLAGEL 5-10HZ**
SURFACE: 2185' FSL, 2296' FEL, SEC. 5
BOTTOM HOLE: 295' FSL, 333' FEL, SEC. 2
- SCHLAGEL 5-11HZ**
SURFACE: 2175' FSL, 2307' FEL, SEC. 5
BOTTOM HOLE: 186' FSL, 470' FWL, SEC. 6

NOTES:

- ▲ INDICATES SECTION CORNER.
- INDICATES CALCULATED CORNER.
- BASIS OF BEARING DERIVED FROM COLORADO COORDINATE SYSTEM OF 1983 NORTH ZONE.
- ALL MEASURED DISTANCES ARE GRID.
- COMBINED SCALE FACTOR: .99972640 CALCULATED FROM THE CENTER 1/4 CORNER OF SECTION 5, T3N, R67W.
- WELL FOOTAGES ARE MEASURED AT RIGHT ANGLES TO THE SECTION LINES.
- NO. 1 & NO. 2 AS SHOWN HEREON ARE GOVERNMENT LOTS 1 & 2 PER THE ORIGINAL GLO SURVEY.

WELL PAD - SCHLAGEL 10-5HZ

MULTI-WELL PLAN
SCHLAGEL 5-1HZ, SCHLAGEL 5-2HZ, SCHLAGEL 5-3HZ,
SCHLAGEL 5-4HZ, SCHLAGEL 5-5HZ, SCHLAGEL 5-6HZ,
SCHLAGEL 5-7HZ, SCHLAGEL 5-8HZ, SCHLAGEL 5-9HZ,
SCHLAGEL 5-10HZ & SCHLAGEL 5-11HZ
LOCATED IN SECTIONS 1, 2, 3, 4, 5 & 6
T3N, R67W, 6TH P.M.
WELD COUNTY, COLORADO

**Kerr-McGee Oil &
Gas Onshore L.P.**

1099 18th Street
Denver, Colorado 80202



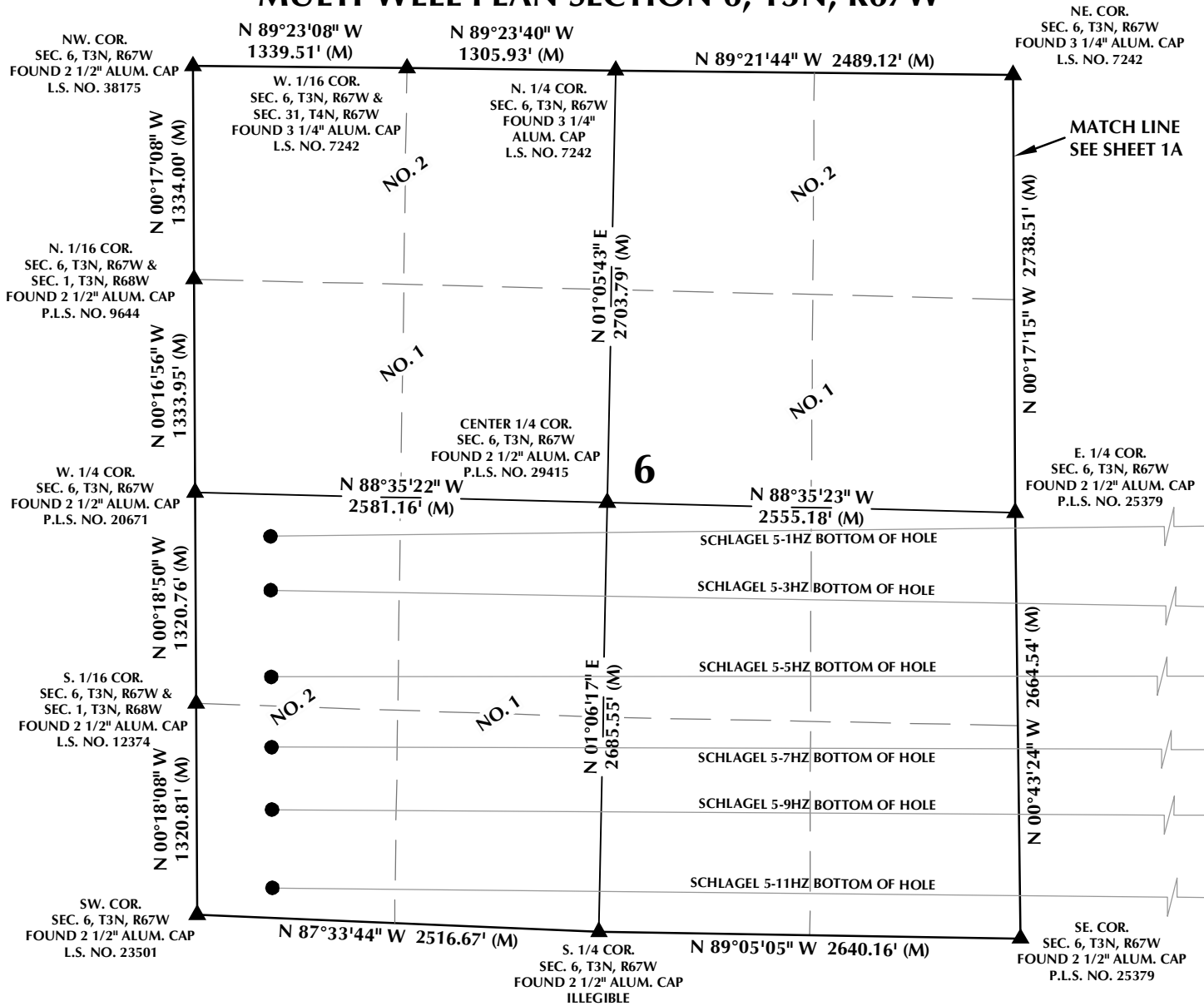
CONSULTING, LLC

SHERIDAN OFFICE
1095 Saberton Avenue
Sheridan, Wyoming 82801
Phone 307-674-0609

LOVELAND OFFICE
6706 North Franklin Avenue
Loveland, Colorado 80538
Phone 970-776-4331

| | | |
|-------------------------|-------------------------|--------------|
| DRAFTED BY: LMO | CHECKED BY: RKF | SHEET NO: 1A |
| DATE DRAFTED: 6/11/2020 | DATE SURVEYED: 5/5/2020 | 1A OF 1 |
| REVISED: 7/1/2020 | FILE NAME: 19-78 | |

MULTI-WELL PLAN SECTION 6, T3N, R67W



WELL NOTES:

SCHLAGEL 5-1HZ
SURFACE: 2280' FSL, 2199' FEL, SEC. 5
BOTTOM HOLE: 2384' FSL, 470' FWL, SEC. 6

SCHLAGEL 5-2HZ
SURFACE: 2270' FSL, 2110' FEL, SEC. 5
BOTTOM HOLE: 2350' FSL, 968' FWL, SEC. 1

SCHLAGEL 5-3HZ
SURFACE: 2259' FSL, 2220' FEL, SEC. 5
BOTTOM HOLE: 2046' FSL, 470' FWL, SEC. 6

SCHLAGEL 5-4HZ
SURFACE: 2249' FSL, 2231' FEL, SEC. 5
BOTTOM HOLE: 1950' FSL, 370' FWL, SEC. 1

SCHLAGEL 5-5HZ
SURFACE: 2238' FSL, 2242' FEL, SEC. 5
BOTTOM HOLE: 1505' FSL, 470' FWL, SEC. 6

SCHLAGEL 5-6HZ
SURFACE: 2228' FSL, 2253' FEL, SEC. 5
BOTTOM HOLE: 1487' FSL, 21' FWL, SEC. 1

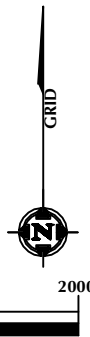
SCHLAGEL 5-7HZ
SURFACE: 2217' FSL, 2264' FEL, SEC. 5
BOTTOM HOLE: 1066' FSL, 470' FWL, SEC. 6

SCHLAGEL 5-8HZ
SURFACE: 2206' FSL, 2274' FEL, SEC. 5
BOTTOM HOLE: 909' FSL, 206' FEL, SEC. 2

SCHLAGEL 5-9HZ
SURFACE: 2196' FSL, 2285' FEL, SEC. 5
BOTTOM HOLE: 675' FSL, 470' FWL, SEC. 6

SCHLAGEL 5-10HZ
SURFACE: 2185' FSL, 2296' FEL, SEC. 5
BOTTOM HOLE: 295' FSL, 333' FEL, SEC. 2

SCHLAGEL 5-11HZ
SURFACE: 2175' FSL, 2307' FEL, SEC. 5
BOTTOM HOLE: 186' FSL, 470' FWL, SEC. 6



NOTES:

- ▲ INDICATES SECTION CORNER.
- INDICATES CALCULATED CORNER.
- BASIS OF BEARING DERIVED FROM COLORADO COORDINATE SYSTEM OF 1983 NORTH ZONE.
- ALL MEASURED DISTANCES ARE GRID.
- COMBINED SCALE FACTOR: .99972640 CALCULATED FROM THE CENTER 1/4 CORNER OF SECTION 5, T3N, R67W.
- WELL FOOTAGES ARE MEASURED AT RIGHT ANGLES TO THE SECTION LINES.
- NO. 1 & NO. 2 AS SHOWN HEREON ARE GOVERNMENT LOTS 1 & 2 PER THE ORIGINAL GLO SURVEY.

WELL PAD - SCHLAGEL 10-5HZ

MULTI-WELL PLAN
SCHLAGEL 5-1HZ, SCHLAGEL 5-2HZ, SCHLAGEL 5-3HZ,
SCHLAGEL 5-4HZ, SCHLAGEL 5-5HZ, SCHLAGEL 5-6HZ,
SCHLAGEL 5-7HZ, SCHLAGEL 5-8HZ, SCHLAGEL 5-9HZ,
SCHLAGEL 5-10HZ & SCHLAGEL 5-11HZ
LOCATED IN SECTIONS 1, 2, 3, 4, 5 & 6
T3N, R67W, 6TH P.M.
WELD COUNTY, COLORADO

**Kerr-McGee Oil &
Gas Onshore L.P.**
1099 18th Street
Denver, Colorado 80202



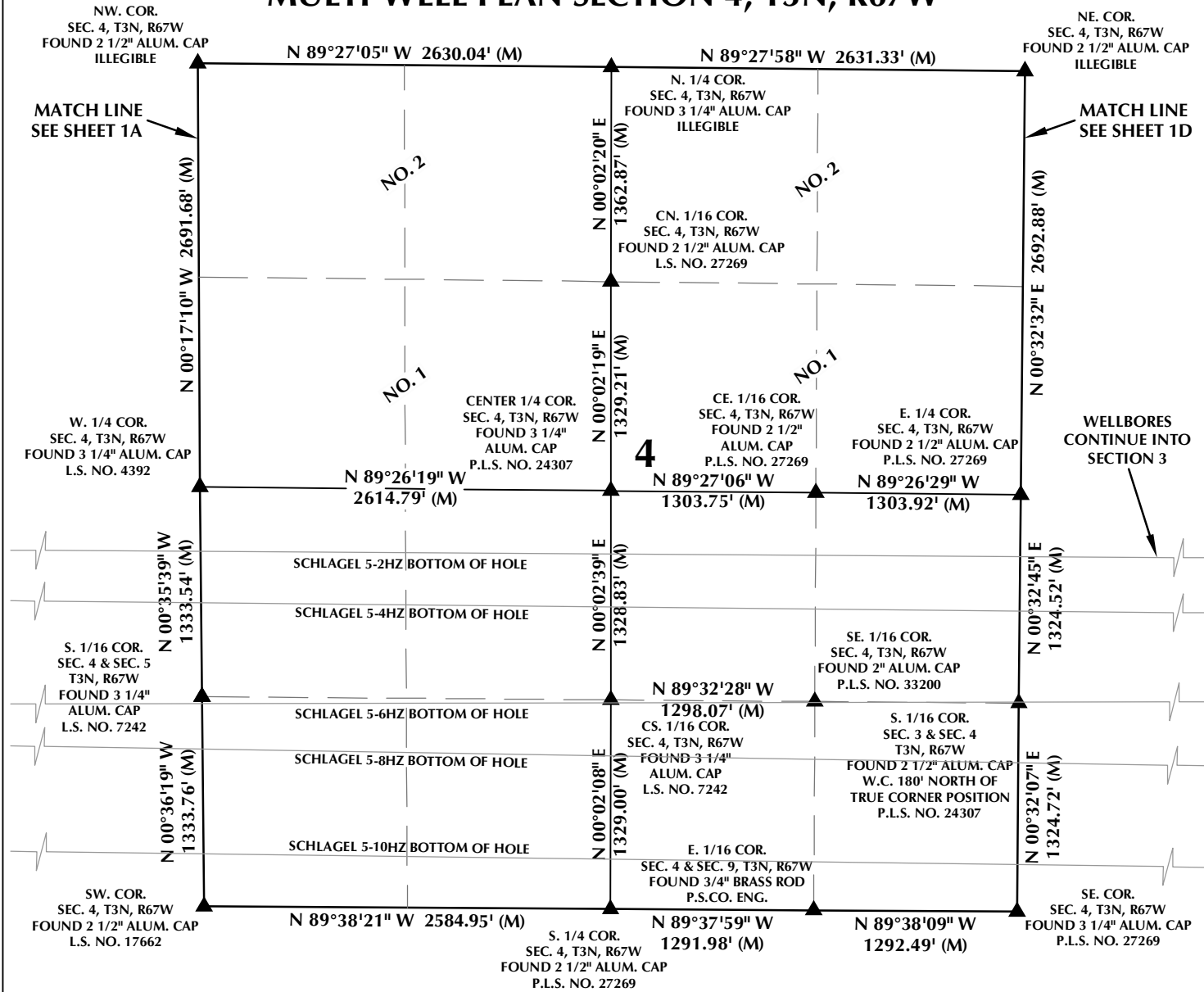
CONSULTING, LLC

SHERIDAN OFFICE
1095 Saberton Avenue
Sheridan, Wyoming 82801
Phone 307-674-0609

LOVELAND OFFICE
6706 North Franklin Avenue
Loveland, Colorado 80538
Phone 970-776-4331

| | | |
|-------------------------|-------------------------|--------------|
| DRAFTED BY: LMO | CHECKED BY: RKF | SHEET NO: 1B |
| DATE DRAFTED: 6/11/2020 | DATE SURVEYED: 5/5/2020 | 1B OF 1 |
| REVISED: | FILE NAME: 19-78 | |

MULTI-WELL PLAN SECTION 4, T3N, R67W



WELL NOTES:

SCHLAGEL 5-1HZ
SURFACE: 2280' FSL, 2199' FEL, SEC. 5
BOTTOM HOLE: 2384' FSL, 470' FWL, SEC. 6

SCHLAGEL 5-2HZ
SURFACE: 2270' FSL, 2110' FEL, SEC. 5
BOTTOM HOLE: 2350' FSL, 968' FWL, SEC. 1

SCHLAGEL 5-3HZ
SURFACE: 2259' FSL, 2220' FEL, SEC. 5
BOTTOM HOLE: 2046' FSL, 470' FWL, SEC. 6

SCHLAGEL 5-4HZ
SURFACE: 2249' FSL, 2231' FEL, SEC. 5
BOTTOM HOLE: 1950' FSL, 370' FWL, SEC. 1

SCHLAGEL 5-5HZ
SURFACE: 2238' FSL, 2242' FEL, SEC. 5
BOTTOM HOLE: 1505' FSL, 470' FWL, SEC. 6

SCHLAGEL 5-6HZ
SURFACE: 2228' FSL, 2253' FEL, SEC. 5
BOTTOM HOLE: 1487' FSL, 21' FWL, SEC. 1

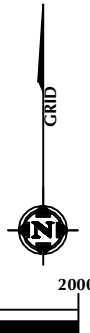
SCHLAGEL 5-7HZ
SURFACE: 2217' FSL, 2264' FEL, SEC. 5
BOTTOM HOLE: 1066' FSL, 470' FWL, SEC. 6

SCHLAGEL 5-8HZ
SURFACE: 2206' FSL, 2274' FEL, SEC. 5
BOTTOM HOLE: 909' FSL, 206' FEL, SEC. 2

SCHLAGEL 5-9HZ
SURFACE: 2196' FSL, 2285' FEL, SEC. 5
BOTTOM HOLE: 675' FSL, 470' FWL, SEC. 6

SCHLAGEL 5-10HZ
SURFACE: 2185' FSL, 2296' FEL, SEC. 5
BOTTOM HOLE: 295' FSL, 333' FEL, SEC. 2

SCHLAGEL 5-11HZ
SURFACE: 2175' FSL, 2307' FEL, SEC. 5
BOTTOM HOLE: 186' FSL, 470' FWL, SEC. 6



SCALE: 1" = 1000'

NOTES:

- ▲ INDICATES SECTION CORNER.
- INDICATES CALCULATED CORNER.
- BASIS OF BEARING DERIVED FROM COLORADO COORDINATE SYSTEM OF 1983 NORTH ZONE.
- ALL MEASURED DISTANCES ARE GRID.
- COMBINED SCALE FACTOR: .99972640 CALCULATED FROM THE CENTER 1/4 CORNER OF SECTION 5, T3N, R67W.
- WELL FOOTAGES ARE MEASURED AT RIGHT ANGLES TO THE SECTION LINES.
- NO. 1 & NO. 2 AS SHOWN HEREON ARE GOVERNMENT LOTS 1 & 2 PER THE ORIGINAL GLO SURVEY.

WELL PAD - SCHLAGEL 10-5HZ

MULTI-WELL PLAN
SCHLAGEL 5-1HZ, SCHLAGEL 5-2HZ, SCHLAGEL 5-3HZ,
SCHLAGEL 5-4HZ, SCHLAGEL 5-5HZ, SCHLAGEL 5-6HZ,
SCHLAGEL 5-7HZ, SCHLAGEL 5-8HZ, SCHLAGEL 5-9HZ,
SCHLAGEL 5-10HZ & SCHLAGEL 5-11HZ
LOCATED IN SECTIONS 1, 2, 3, 4, 5 & 6
T3N, R67W, 6TH P.M.
WELD COUNTY, COLORADO

**Kerr-McGee Oil &
Gas Onshore L.P.**
1099 18th Street
Denver, Colorado 80202



CONSULTING, LLC

SHERIDAN OFFICE
1095 Saberton Avenue
Sheridan, Wyoming 82801
Phone 307-674-0609

LOVELAND OFFICE
6706 North Franklin Avenue
Loveland, Colorado 80538
Phone 970-776-4331

DRAFTED BY: LMO

CHECKED BY: RKF

SHEET NO:

DATE DRAFTED: 6/11/2020

DATE SURVEYED: 5/5/2020

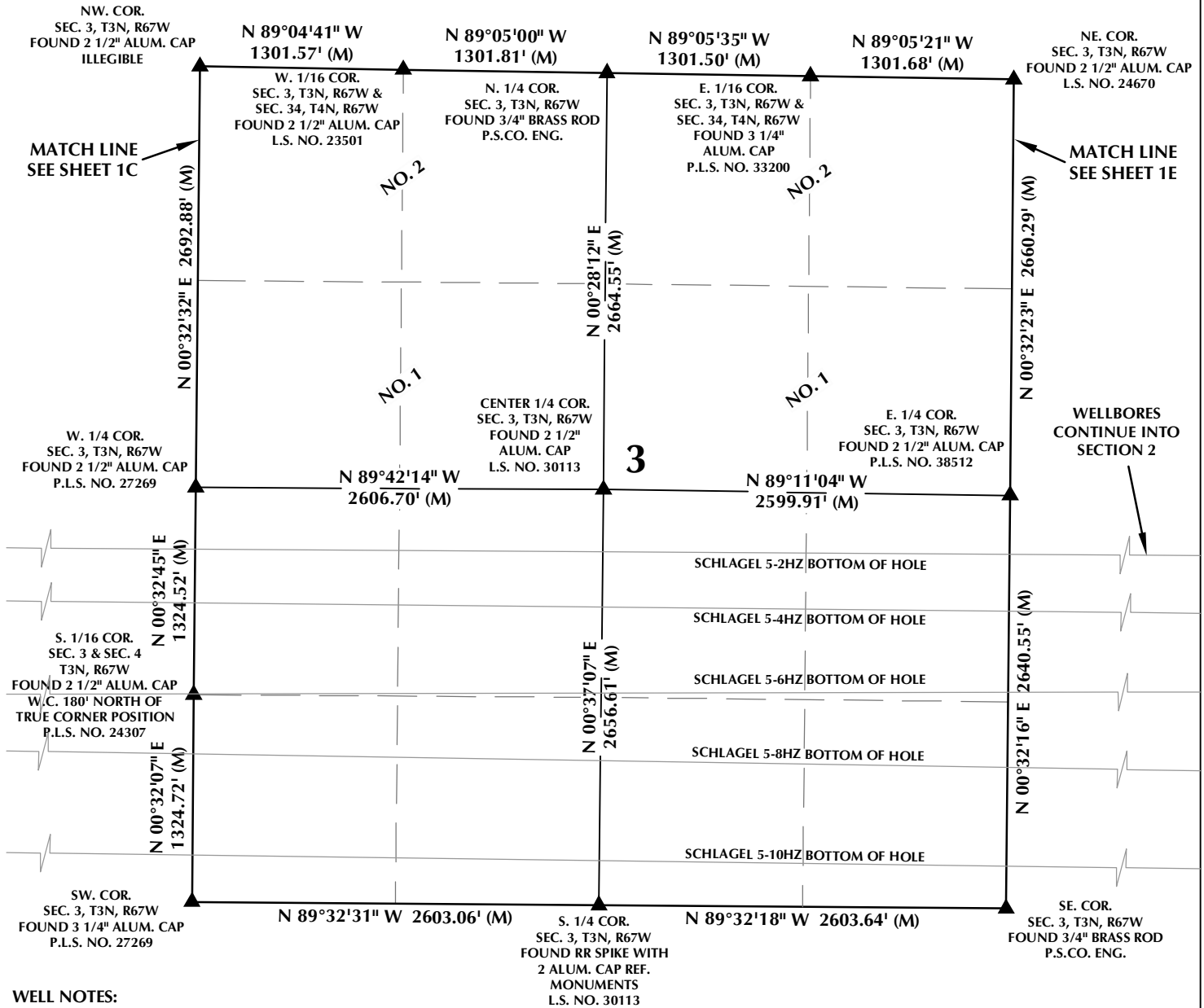
1C

REVISED:

FILE NAME: 19-78

1C OF 1

MULTI-WELL PLAN SECTION 3, T3N, R67W



WELL NOTES:

SCHLAGEL 5-1HZ
SURFACE: 2280' FSL, 2199' FEL, SEC. 5
BOTTOM HOLE: 2384' FSL, 470' FWL, SEC. 6

SCHLAGEL 5-2HZ
SURFACE: 2270' FSL, 2110' FEL, SEC. 5
BOTTOM HOLE: 2350' FSL, 968' FWL, SEC. 1

SCHLAGEL 5-3HZ
SURFACE: 2259' FSL, 2220' FEL, SEC. 5
BOTTOM HOLE: 2046' FSL, 470' FWL, SEC. 6

SCHLAGEL 5-4HZ
SURFACE: 2249' FSL, 2231' FEL, SEC. 5
BOTTOM HOLE: 1950' FSL, 370' FWL, SEC. 1

SCHLAGEL 5-5HZ
SURFACE: 2238' FSL, 2242' FEL, SEC. 5
BOTTOM HOLE: 1505' FSL, 470' FWL, SEC. 6

SCHLAGEL 5-6HZ
SURFACE: 2228' FSL, 2253' FEL, SEC. 5
BOTTOM HOLE: 1487' FSL, 21' FWL, SEC. 1

SCHLAGEL 5-7HZ
SURFACE: 2217' FSL, 2264' FEL, SEC. 5
BOTTOM HOLE: 1066' FSL, 470' FWL, SEC. 6

SCHLAGEL 5-8HZ
SURFACE: 2206' FSL, 2274' FEL, SEC. 5
BOTTOM HOLE: 909' FSL, 206' FEL, SEC. 2

SCHLAGEL 5-9HZ
SURFACE: 2196' FSL, 2285' FEL, SEC. 5
BOTTOM HOLE: 675' FSL, 470' FWL, SEC. 6

SCHLAGEL 5-10HZ
SURFACE: 2185' FSL, 2296' FEL, SEC. 5
BOTTOM HOLE: 295' FSL, 333' FEL, SEC. 2

SCHLAGEL 5-11HZ
SURFACE: 2175' FSL, 2307' FEL, SEC. 5
BOTTOM HOLE: 186' FSL, 470' FWL, SEC. 6



NOTES:

- ▲ INDICATES SECTION CORNER.
- INDICATES CALCULATED CORNER.
- BASIS OF BEARING DERIVED FROM COLORADO COORDINATE SYSTEM OF 1983 NORTH ZONE.
- ALL MEASURED DISTANCES ARE GRID.
- COMBINED SCALE FACTOR: .99972640 CALCULATED FROM THE CENTER 1/4 CORNER OF SECTION 5, T3N, R67W.
- WELL FOOTAGES ARE MEASURED AT RIGHT ANGLES TO THE SECTION LINES.
- NO. 1 & NO. 2 AS SHOWN HEREON ARE GOVERNMENT LOTS 1 & 2 PER THE ORIGINAL GLO SURVEY.

WELL PAD - SCHLAGEL 10-5HZ

MULTI-WELL PLAN
SCHLAGEL 5-1HZ, SCHLAGEL 5-2HZ, SCHLAGEL 5-3HZ,
SCHLAGEL 5-4HZ, SCHLAGEL 5-5HZ, SCHLAGEL 5-6HZ,
SCHLAGEL 5-7HZ, SCHLAGEL 5-8HZ, SCHLAGEL 5-9HZ,
SCHLAGEL 5-10HZ & SCHLAGEL 5-11HZ
LOCATED IN SECTIONS 1, 2, 3, 4, 5 & 6
T3N, R67W, 6TH P.M.
WELD COUNTY, COLORADO

**Kerr-McGee Oil &
Gas Onshore L.P.**
1099 18th Street
Denver, Colorado 80202



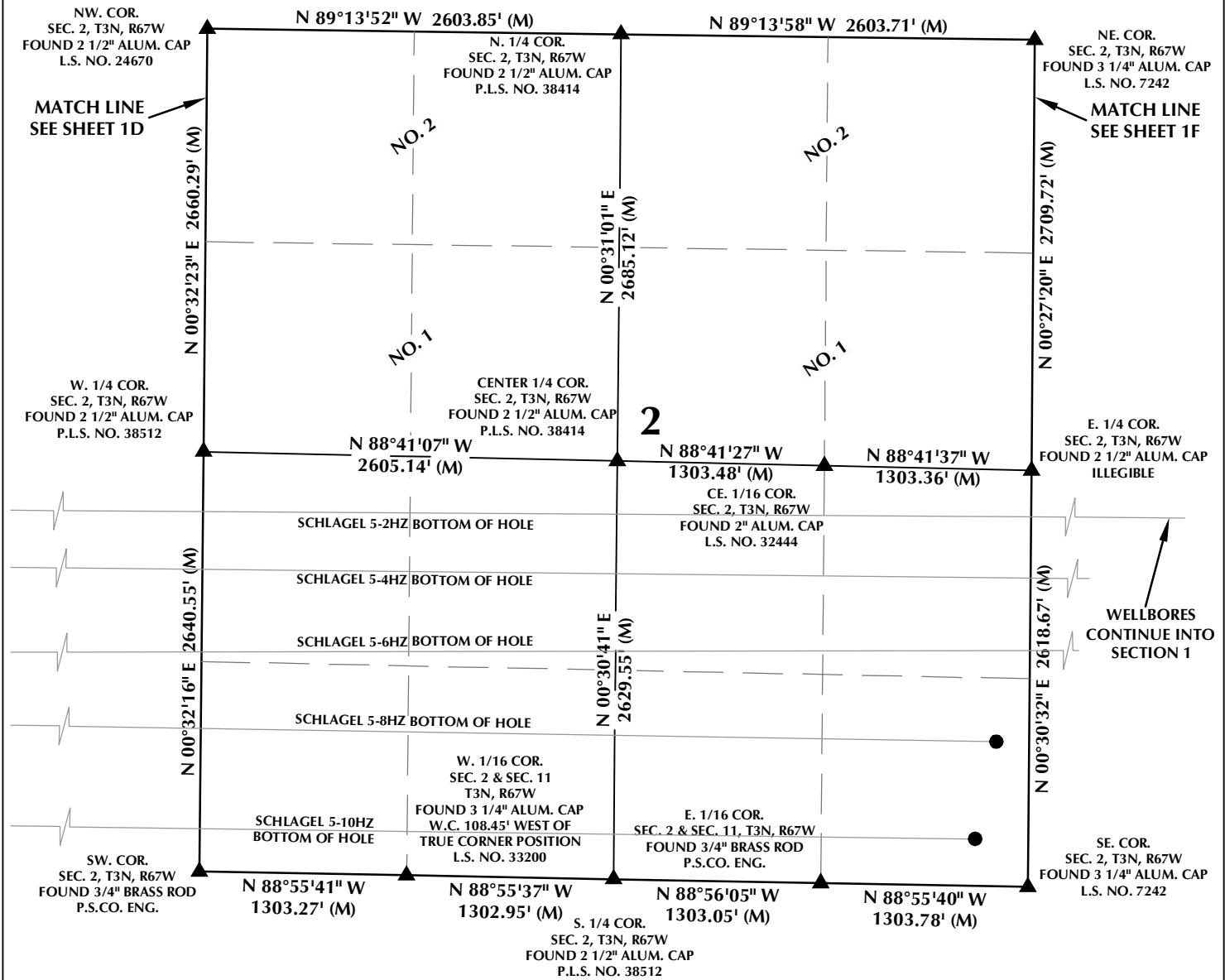
CONSULTING, LLC

SHERIDAN OFFICE
1095 Saberton Avenue
Sheridan, Wyoming 82801
Phone 307-674-0609

LOVELAND OFFICE
6706 North Franklin Avenue
Loveland, Colorado 80538
Phone 970-776-4331

| | | |
|-------------------------|-------------------------|--------------|
| DRAFTED BY: LMO | CHECKED BY: RKF | SHEET NO: 1D |
| DATE DRAFTED: 6/11/2020 | DATE SURVEYED: 5/5/2020 | 1D OF 1 |
| REVISED: | FILE NAME: 19-78 | |

MULTI-WELL PLAN SECTION 2, T3N, R67W



WELL PAD - SCHLAGEL 10-5HZ

MULTI-WELL PLAN
SCHLAGEL 5-1HZ, SCHLAGEL 5-2HZ, SCHLAGEL 5-3HZ,
SCHLAGEL 5-4HZ, SCHLAGEL 5-5HZ, SCHLAGEL 5-6HZ,
SCHLAGEL 5-7HZ, SCHLAGEL 5-8HZ, SCHLAGEL 5-9HZ,
SCHLAGEL 5-10HZ & SCHLAGEL 5-11HZ
LOCATED IN SECTIONS 1, 2, 3, 4, 5 & 6
T3N, R67W, 6TH P.M.
WELD COUNTY, COLORADO

**Kerr-McGee Oil &
Gas Onshore L.P.**
1099 18th Street
Denver, Colorado 80202



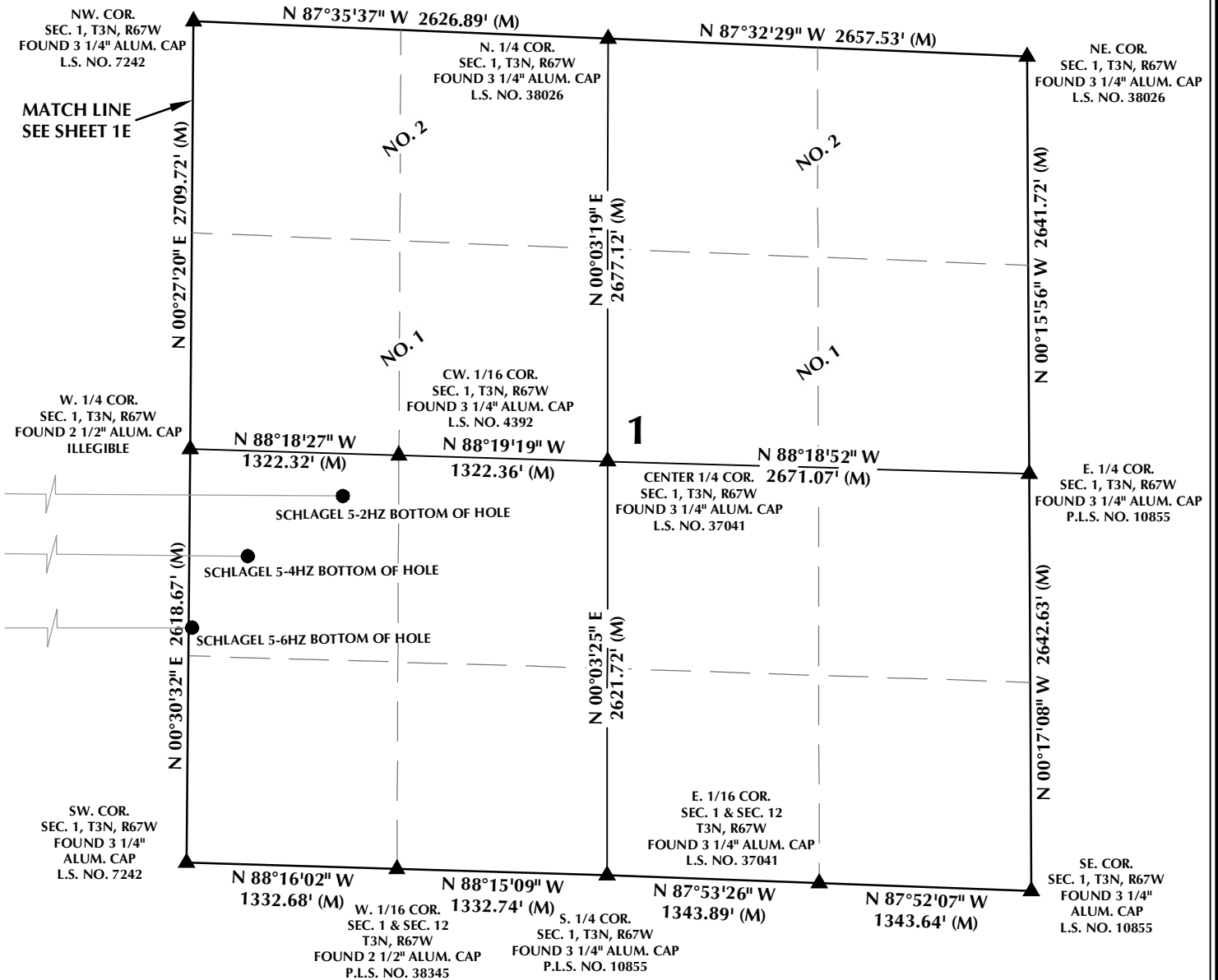
CONSULTING, LLC

SHERIDAN OFFICE
1095 Saberton Avenue
Sheridan, Wyoming 82801
Phone 307-674-0609

LOVELAND OFFICE
6706 North Franklin Avenue
Loveland, Colorado 80538
Phone 970-776-4331

| | | |
|-------------------------|-------------------------|--------------|
| DRAFTED BY: LMO | CHECKED BY: RKF | SHEET NO: 1E |
| DATE DRAFTED: 6/11/2020 | DATE SURVEYED: 5/5/2020 | 1E OF 1 |
| REVISED: | FILE NAME: 19-78 | |

MULTI-WELL PLAN SECTION 1, T3N, R67W

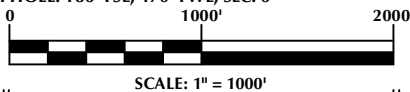


WELL NOTES:

- SCHLAGEL 5-1HZ**
SURFACE: 2280' FSL, 2199' FEL, SEC. 5
BOTTOM HOLE: 2384' FSL, 470' FWL, SEC. 6
- SCHLAGEL 5-2HZ**
SURFACE: 2270' FSL, 2110' FEL, SEC. 5
BOTTOM HOLE: 2350' FSL, 968' FWL, SEC. 1
- SCHLAGEL 5-3HZ**
SURFACE: 2259' FSL, 2220' FEL, SEC. 5
BOTTOM HOLE: 2046' FSL, 470' FWL, SEC. 6
- SCHLAGEL 5-4HZ**
SURFACE: 2249' FSL, 2231' FEL, SEC. 5
BOTTOM HOLE: 1950' FSL, 370' FWL, SEC. 1
- SCHLAGEL 5-5HZ**
SURFACE: 2238' FSL, 2242' FEL, SEC. 5
BOTTOM HOLE: 1505' FSL, 470' FWL, SEC. 6
- SCHLAGEL 5-6HZ**
SURFACE: 2228' FSL, 2253' FEL, SEC. 5
BOTTOM HOLE: 1487' FSL, 21' FWL, SEC. 1
- SCHLAGEL 5-7HZ**
SURFACE: 2217' FSL, 2264' FEL, SEC. 5
BOTTOM HOLE: 1066' FSL, 470' FWL, SEC. 6
- SCHLAGEL 5-8HZ**
SURFACE: 2206' FSL, 2274' FEL, SEC. 5
BOTTOM HOLE: 909' FSL, 206' FEL, SEC. 2
- SCHLAGEL 5-9HZ**
SURFACE: 2196' FSL, 2285' FEL, SEC. 5
BOTTOM HOLE: 675' FSL, 470' FWL, SEC. 6
- SCHLAGEL 5-10HZ**
SURFACE: 2185' FSL, 2296' FEL, SEC. 5
BOTTOM HOLE: 295' FSL, 333' FEL, SEC. 2
- SCHLAGEL 5-11HZ**
SURFACE: 2175' FSL, 2307' FEL, SEC. 5
BOTTOM HOLE: 186' FSL, 470' FWL, SEC. 6

NOTES:

- ▲ INDICATES SECTION CORNER.
- INDICATES CALCULATED CORNER.
- BASIS OF BEARING DERIVED FROM COLORADO COORDINATE SYSTEM OF 1983 NORTH ZONE.
- ALL MEASURED DISTANCES ARE GRID.
- COMBINED SCALE FACTOR: .99972640 CALCULATED FROM THE CENTER 1/4 CORNER OF SECTION 5, T3N, R67W.
- WELL FOOTAGES ARE MEASURED AT RIGHT ANGLES TO THE SECTION LINES.
- NO. 1 & NO. 2 AS SHOWN HEREON ARE GOVERNMENT LOTS 1 & 2 PER THE ORIGINAL GLO SURVEY.



WELL PAD - SCHLAGEL 10-5HZ

MULTI-WELL PLAN
SCHLAGEL 5-1HZ, SCHLAGEL 5-2HZ, SCHLAGEL 5-3HZ,
SCHLAGEL 5-4HZ, SCHLAGEL 5-5HZ, SCHLAGEL 5-6HZ,
SCHLAGEL 5-7HZ, SCHLAGEL 5-8HZ, SCHLAGEL 5-9HZ,
SCHLAGEL 5-10HZ & SCHLAGEL 5-11HZ
LOCATED IN SECTIONS 1, 2, 3, 4, 5 & 6
T3N, R67W, 6TH P.M.
WELD COUNTY, COLORADO

**Kerr-McGee Oil &
Gas Onshore L.P.**
1099 18th Street
Denver, Colorado 80202



CONSULTING, LLC

SHERIDAN OFFICE
1095 Saberton Avenue
Sheridan, Wyoming 82801
Phone 307-674-0609

LOVELAND OFFICE
6706 North Franklin Avenue
Loveland, Colorado 80538
Phone 970-776-4331

| | | |
|-------------------------|-------------------------|--------------|
| DRAFTED BY: LMO | CHECKED BY: RKF | SHEET NO: 1F |
| DATE DRAFTED: 6/11/2020 | DATE SURVEYED: 5/5/2020 | 1F OF 1 |
| REVISED: | FILE NAME: 19-78 | |