

# Interim Reclamation and Stormwater Inspection

July 16, 2020

Operator: ANADARKO WATTENBERG OIL COMPLEX LLC #10600

Location ID: 466426

Inspection Document #: 697501768

Weld County, CO

Section 13 T2N R65W

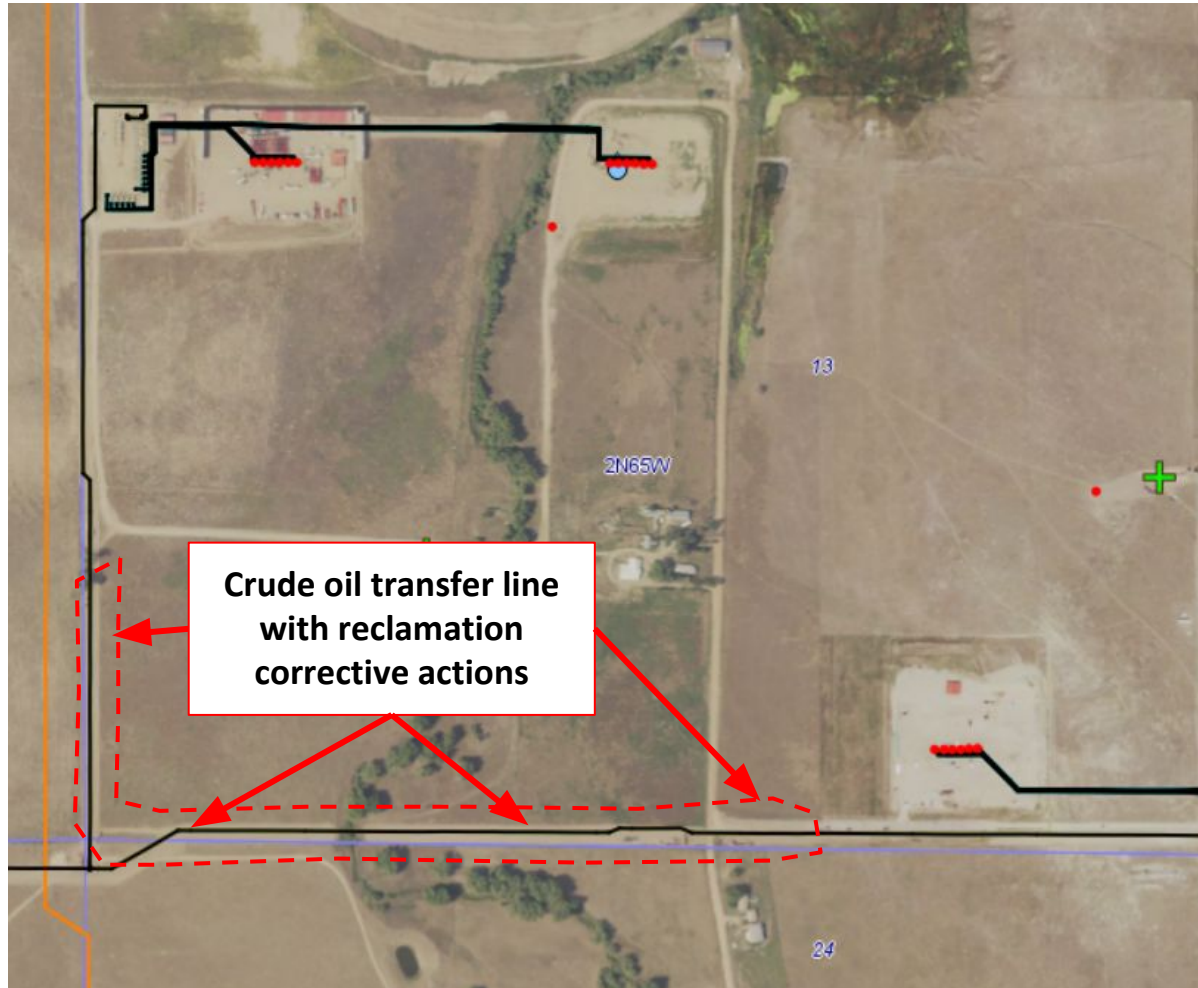
Chris Binschus  
Reclamation Specialist, COGCC



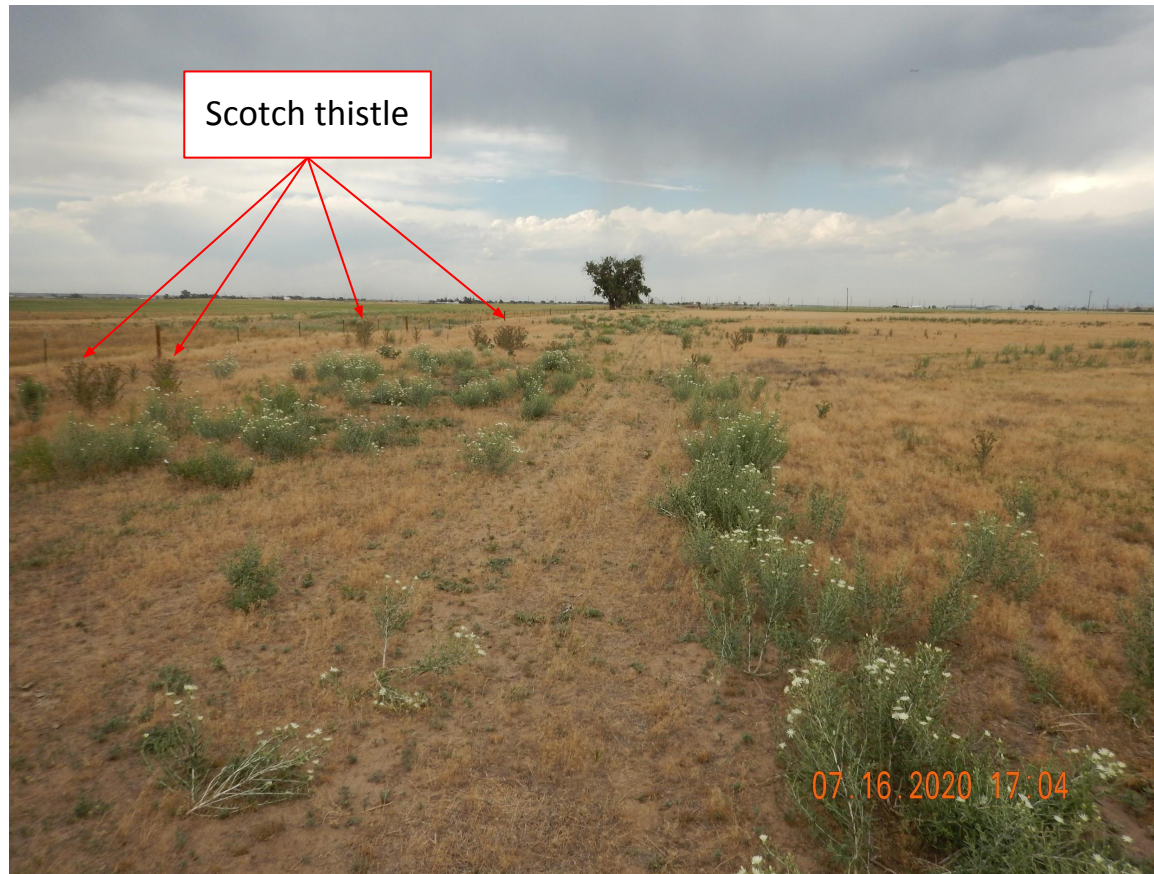
**COLORADO**

**Oil & Gas Conservation  
Commission**

Department of Natural Resources

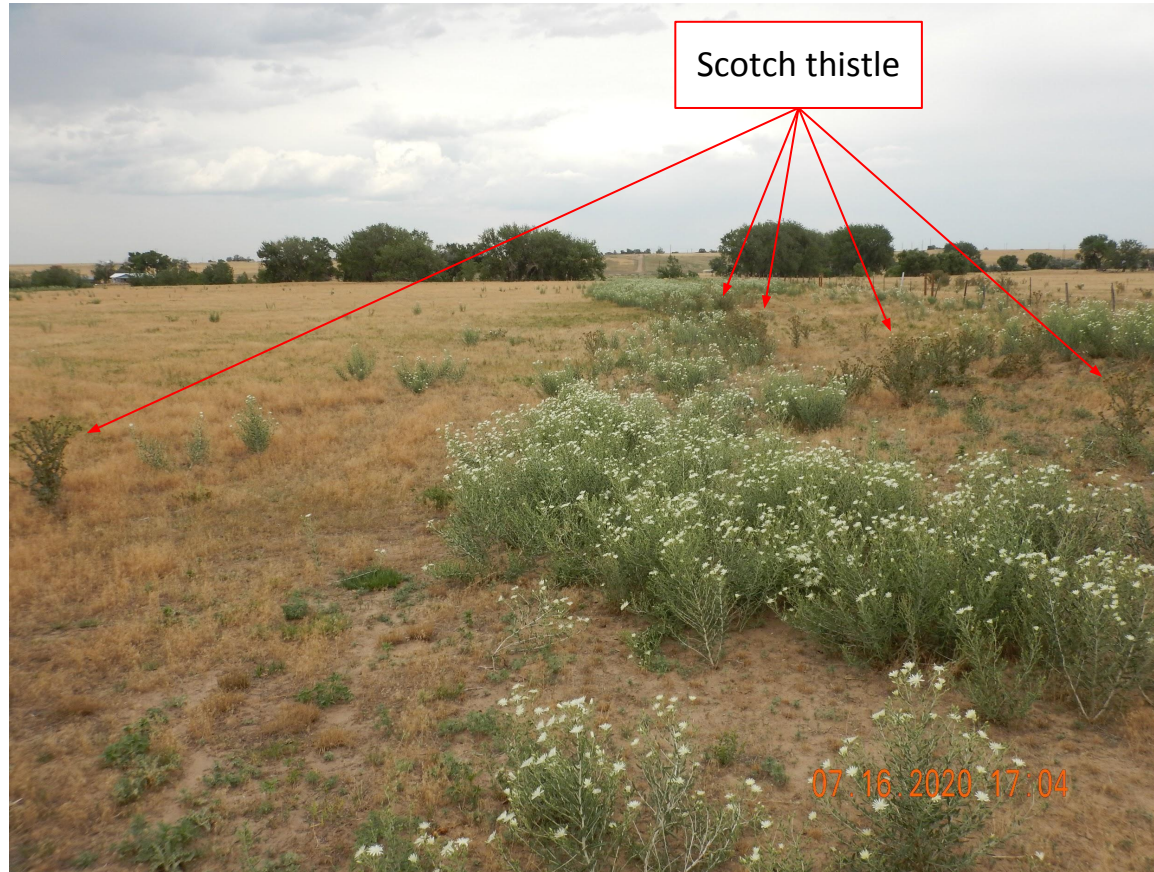


**Photo 1.** COGCC GISOnline aerial imagery taken 2017. Imagery illustrates a section of a crude oil transfer line with reclamation corrective actions. A List B Colorado noxious weed, Scotch thistle, was observed within the transfer line disturbance. Also, in general, the transfer line appears to consist mostly of annual, weedy vegetation.



**Photo 2.** Photo taken from the southwestern crude oil transfer line, facing North. Photo illustrates a List B Colorado noxious weed, Scotch thistle. Scotch thistle was observed throughout portions of the western and southern transfer line.





**Photo 3.** Photo taken from the southwestern crude oil transfer line, facing East. See comments under Photo 2.

Inspection Photos  
Location Name: 16-18-1476-4  
Location ID: 466426



**Photo 4.** Photo taken along CR 47 1/2, facing West. Photo illustrates the establishment of Kochia and Russian thistle (green vegetation), both annual, weedy species, along the crude oil transfer line.





Inspection Photos  
Location Name: 16-18-1476-4  
Location ID: 466426



**Photo 5.** Photo taken along CR 47 1/2, facing East. See comments under Photo 4. This photo has additional species like sunflower and horseweed.



Inspection Photos  
Location Name: 16-18-1476-4  
Location ID: 466426



**Photo 6.** Reference photo taken along the eastern crude oil transfer line, facing East. Photo illustrates Smooth brome within the reference areas which was not observed along the crude oil transfer line.

