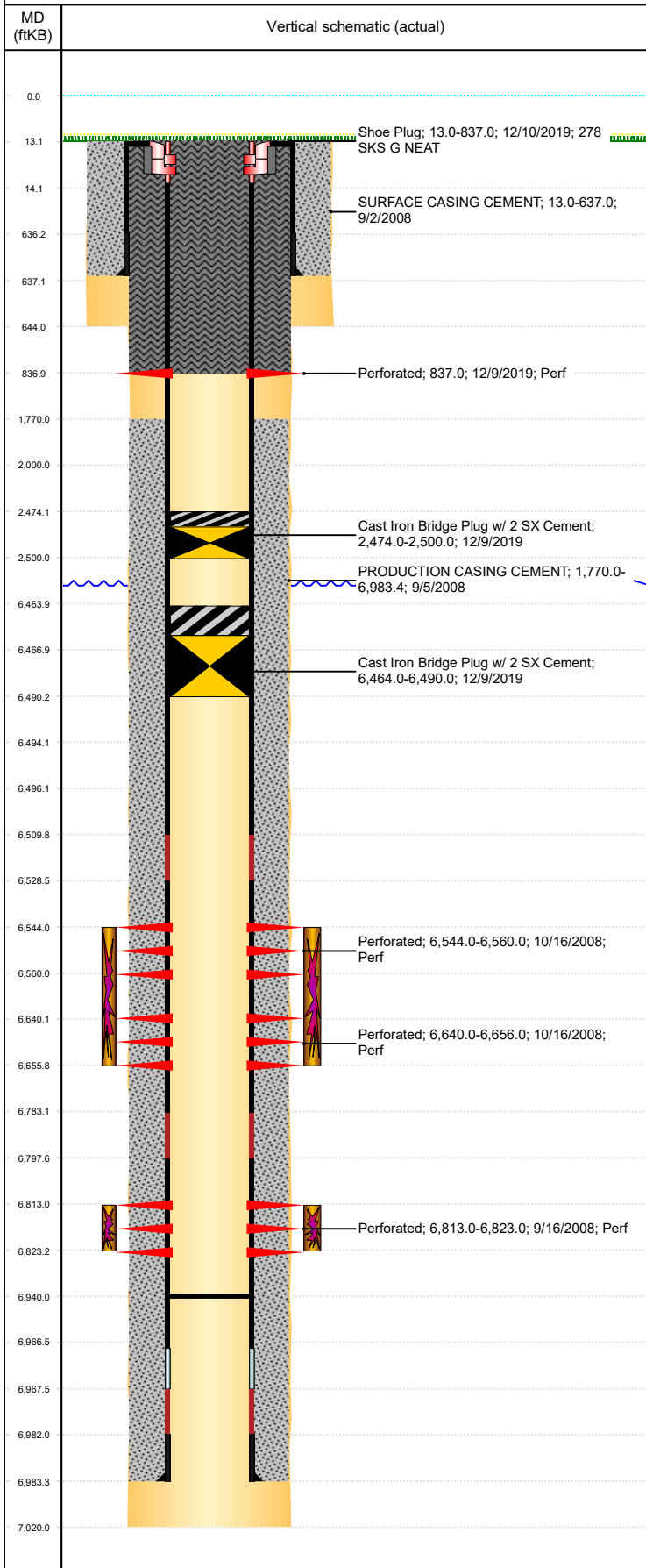


Well Name: KEHN USX AA01-02

VERTICAL, ORIGINAL HOLE, 4/17/2020 2:21:47 PM



Well Header

API 05-123-27164	Business Unit DJ BASIN	District 15	Well Config VERTICAL
KB - GL / MSL (ft...) 13.00	Spud Date 9/2/2008	P & A Date	Well Production Status PA
SoRT Yes			

Comment
THIS IS A USX COMMITMENT WELL.

Surface Location (Congressional)

Qtr 3 NW	Qtr 4 NE	Section 1	Twnshp 6	Twnsh... N	Range 63	Rng E... W	Actual Latitude (°) 40.52106696	Actual Longitude (°) -104.38197854
-------------	-------------	--------------	-------------	---------------	-------------	---------------	------------------------------------	---------------------------------------

Wellbore Sections

Section Des	Size (in)	Act Top, MD (ftKB)	Act Btm, MD (ftKB)
SURFACE	12 1/4	13	644
PRODUCTION	7 7/8	644	7,020

Casing Strings

Csg Des	Run Date	OD (in)	Wt/Len (lb/ft)	Grade	Top, MD (ftKB)	MD (ftKB)
Surface	9/2/2008	8 5/8	24.00	J-55	13.0	637.0
Production	9/4/2008	4 1/2	11.60	M-80	0.0	6,983.4

Cement

Des	Start Date	Top (ftKB)	Btm (ftKB)
SURFACE CASING CEMENT	9/2/2008	13.0	637.0
PRODUCTION CASING CEMENT	9/5/2008	1,770.0	6,983.4
Shoe Plug	12/10/2019	13.0	837.0

Zone Statuses

Zone Name	Status Date	Status	Fluid Type	Job	Prod Method
CODELL	12/4/2008	PR	Water	DRILLING/COMPLETION - ORIGINAL, 9/2/2008...	Flowing
CODELL	11/3/2015	SI			
NIOBRARA	6/4/2009	PR			
NIOBRARA	11/3/2015	SI			

Perforation Data

Linked Zone	Bnch/Stg	Entered Shot Total	Top (ftKB)	Btm (ftKB)	Date
CODELL, ORIGINAL HOLE		6	837.00	837.00	12/9/2019
NIOBRARA, ORIGINAL HOLE	A	32	6,544.00	6,560.00	10/16/2008
NIOBRARA, ORIGINAL HOLE	B	32	6,640.00	6,656.00	10/16/2008
CODELL, ORIGINAL HOLE		40	6,813.00	6,823.00	9/16/2008

Stimulation Intervals

Zone	Start Date	Top (ftKB)	Btm (ftKB)
NIOBRARA, ORIGINAL HOLE	10/16/2008	6,544.0	6,656.0
CODELL, ORIGINAL HOLE	10/16/2008	6,813.0	6,823.0

Other In Hole

Run Date	Des	Make	OD (in)	Top (ftKB)	Btm (ftKB)
12/9/2019	Cast Iron Bridge Plug w/ 2 SX Cement		4	2,474.0	2,500.0
12/9/2019	Cast Iron Bridge Plug w/ 2 SX Cement		4	6,464.0	6,490.0

Logs

Date	Type	Top, MD (ftKB)	Btm, MD (ftKB)
9/4/2008	Caliper/Comp. Density/Neutron/GR/SP/ML	2,850.0	6,987.0
9/4/2008	DIL/GR/SP/Caliper	637.0	6,987.0
9/9/2008	CBL/CCL/GR	1,670.0	6,934.0
1/7/2014	GYRO	0.0	6,700.0

Plug Back Total Depths

Date	Type	Com	Depth (ftKB)
9/9/2008	FILL		6,941.0
10/22/2008	PLUG REMNANTS	DRILL CIFT W/ SHOE AND CHASE DOWN TO 6940'	6,940.0