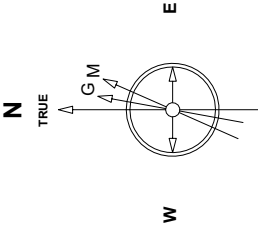


Great Western Operating Company, LLC

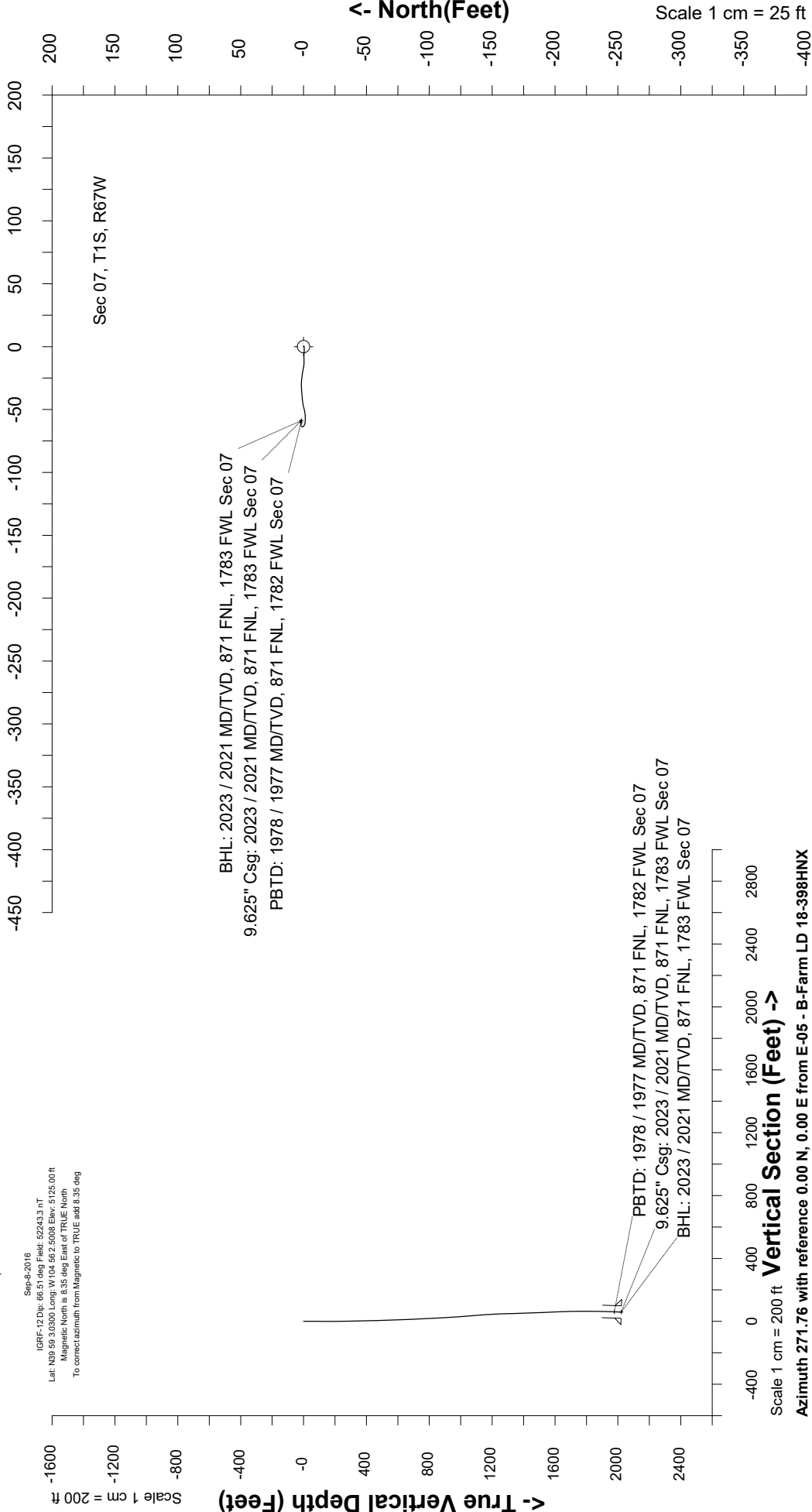
Created by	mmount
Date plotted	29-Apr-2020
Plot reference is B-Farm LD 18-398HNX (AWB).	
Ref wellpath is B-Farm LD 18-398HNX (AWP#1).	
Coordinates are in Feet reference E-05 - B-F arm LD 18-398HNX.	
True Vertical Depths are reference Rig Datum.	
Measured Depths are reference Rig Datum.	
Rig Datum: Actual Datum #1	
Rig Datum to Mean Sea Level: 5131.00 ft	
Plot North is aligned to TRUE North.	

Location	Colorado	Slot	E-05 - B-Farm LD 18-398HNX
Field	Wattenburg	Well	B-Farm LD 18-398HNX
Installation	B-Farm	Wellbore	B-Farm LD 18-398HNX (AWB)



East (Feet) ->

Scale 1 cm = 25 ft



Vertical Section (Feet) ->

Scale 1 cm = 200 ft
Azimuth 271.76 with reference 0.00 N, 0.00 E from E-05 - B-Farm LD 18-398HNX

Great Western Operating Co, LLC
 Directional Survey Report
 Wellpath: B-Farm LD 18-398HNX
 MDs and TVDs are from Rig Floor 5131.0ft above Mean Sea Level

Wellpath Report

MD[ft]	Inc[deg]	Azi[deg]	TVD[ft]	North[ft]	East[ft]	DLS [deg/100ft]	Vertical Section[ft]
0.00	0.00	0.00	0.00	0.00	0.00		0.00
84.00	0.09	125.09	84.00	-0.04	0.05	0.00	-0.06
172.00	0.40	112.35	172.00	-0.19	0.39	0.00	-0.40
262.00	0.35	247.43	262.00	-0.42	0.43	0.00	-0.44
354.00	2.07	267.03	353.97	-0.61	-1.49	0.00	1.47
443.00	2.02	279.25	442.92	-0.44	-4.64	0.00	4.63
533.00	1.98	265.54	532.86	-0.31	-7.76	0.00	7.74
623.00	1.71	270.37	622.82	-0.42	-10.65	0.00	10.63
713.00	2.07	272.83	712.77	-0.33	-13.62	0.00	13.60
803.00	2.94	280.83	802.68	0.18	-17.51	0.00	17.50
893.00	3.69	279.16	892.53	1.07	-22.63	0.00	22.65
983.00	4.17	272.48	982.32	1.68	-28.76	0.00	28.80
1073.00	4.53	264.92	1072.06	1.50	-35.57	0.00	35.60
1163.00	4.13	264.04	1161.80	0.85	-42.33	0.00	42.34
1253.00	2.07	258.07	1251.67	0.18	-47.15	0.00	47.13
1343.00	1.89	254.99	1341.61	-0.54	-50.17	0.00	50.13
1433.00	1.67	261.41	1431.57	-1.12	-52.90	0.00	52.84
1523.00	2.77	267.47	1521.50	-1.41	-56.37	0.00	56.30
1612.00	2.33	278.02	1610.41	-1.25	-60.31	0.00	60.24
1702.00	1.41	307.46	1700.37	-0.33	-63.00	0.00	62.96
1792.00	0.88	9.25	1790.35	1.03	-63.77	0.00	63.77
1882.00	1.01	68.22	1880.34	2.01	-62.92	0.00	62.95
1966.00	1.98	98.02	1964.31	2.08	-60.80	0.00	60.83
2023.00	1.98	98.02	2021.28	1.80	-58.85	0.00	58.88